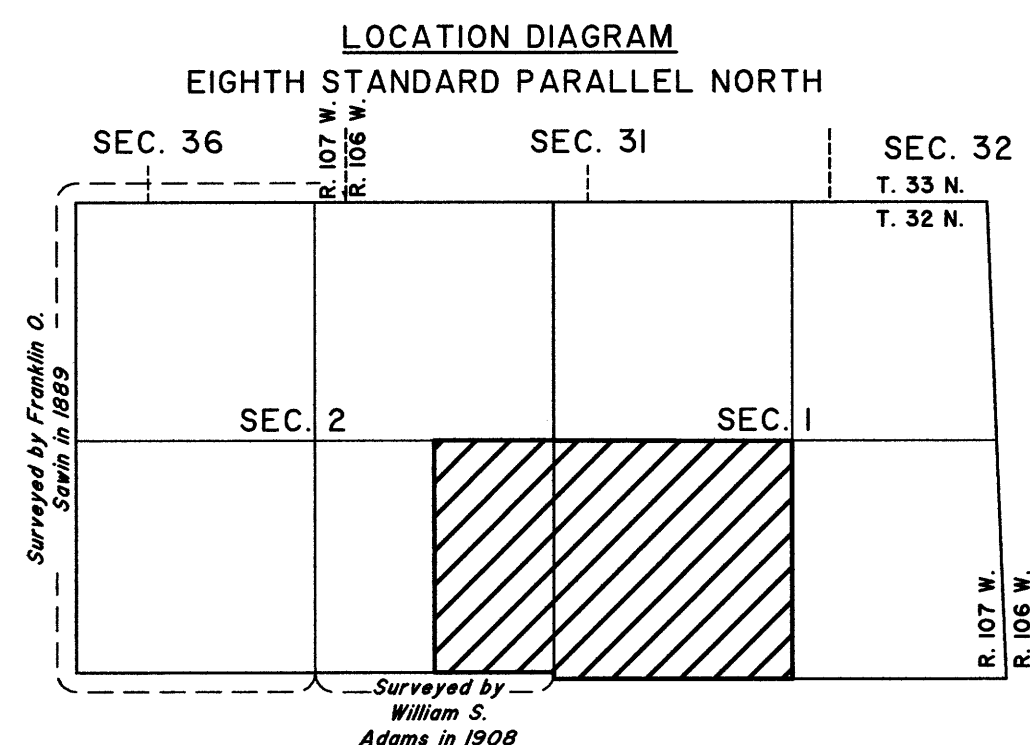
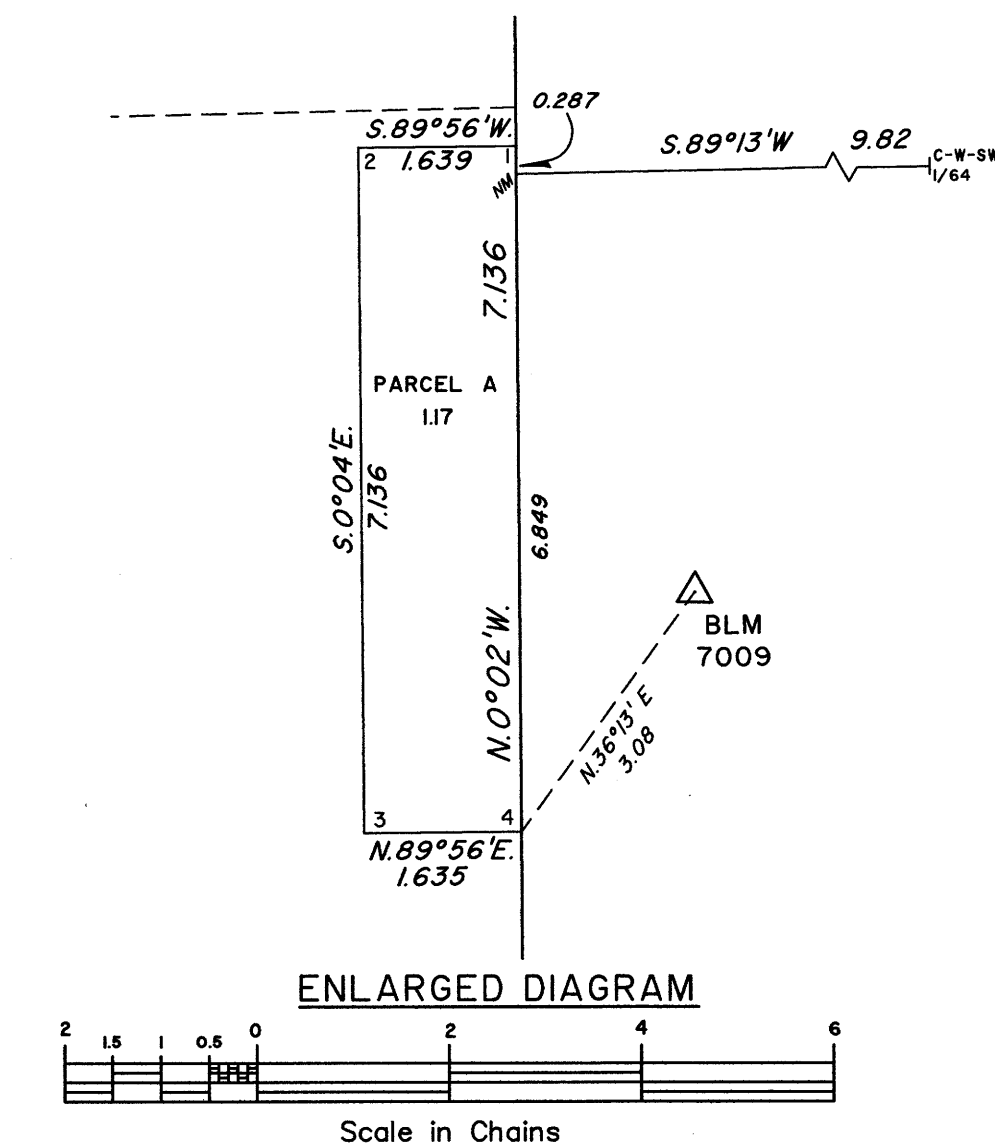
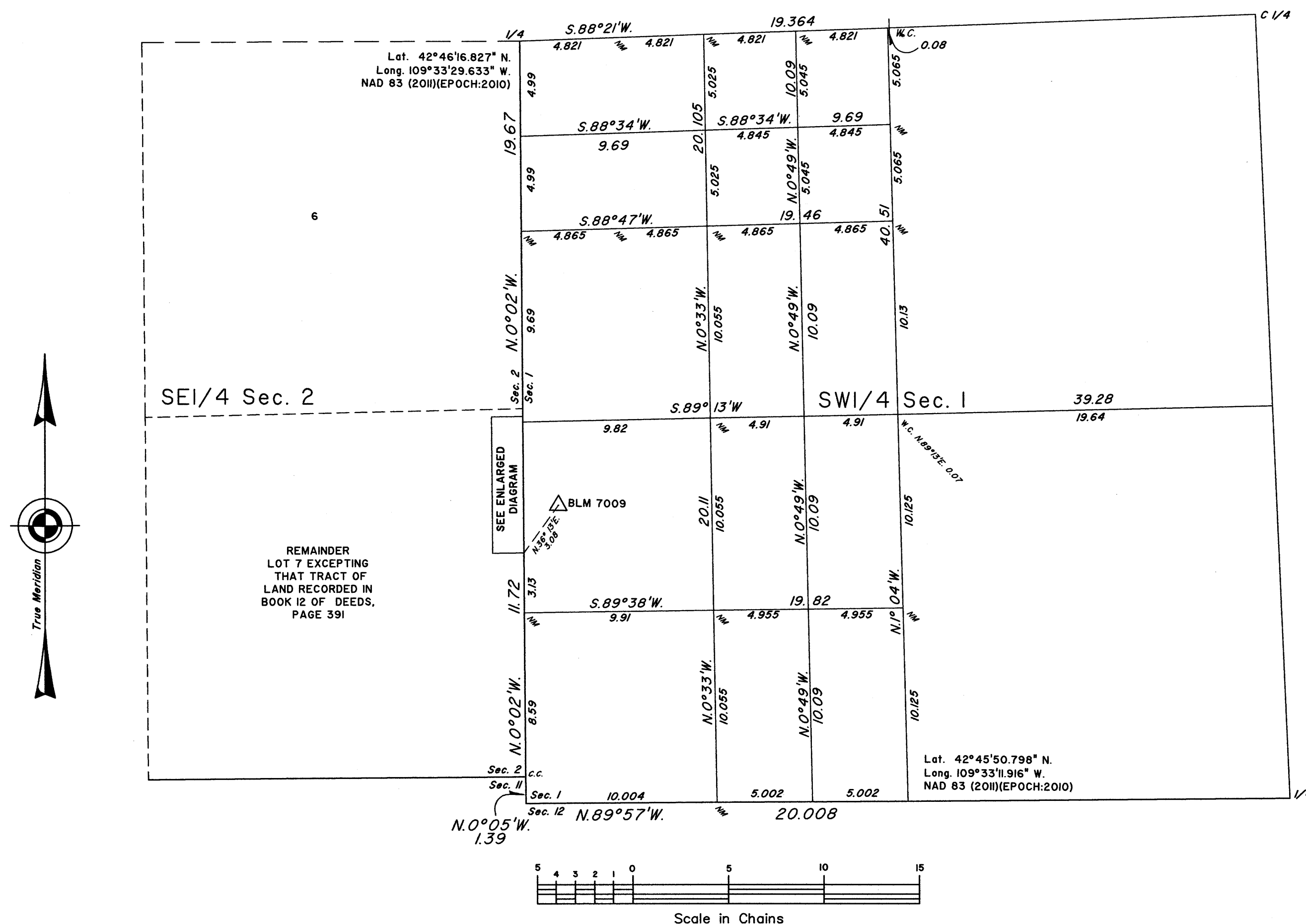


T. 32 N., R. 107 W., Sixth Principal Meridian, Wyoming, Field Note Links

Plat Accession Number(s)	Year(s) of Survey	
Township Subdivision Plats		
8823	2021	https://www.wy.blm.gov/cadastral/countyplats/sublette/fieldnotes/t32nr107w_gp1041fn.pdf
8132	1996	https://www.wy.blm.gov/cadastral/countyplats/sublette/fieldnotes/t32nr107w_gp623fn.pdf
7414	1975	https://www.wy.blm.gov/cadastral/countyplats/sublette/fieldnotes/t32nr107w_gp371fn.pdf
4341	1908	https://www.wy.blm.gov/cadastral/countyplats/sublette/fieldnotes/t32nr107w_c331fn.pdf
4340	1889	https://www.wy.blm.gov/cadastral/countyplats/sublette/fieldnotes/t32nr107w_c233fn.pdf
Township Exterior Plats		
4321	1889	https://www.wy.blm.gov/cadastral/countyplats/sublette/fieldnotes/ext2492.pdf

TOWNSHIP 32 NORTH, RANGE 107 WEST, OF THE SIXTH PRINCIPAL MERIDIAN, WYOMING.

DEPENDENT RESURVEY AND SURVEY



A history of surveys is contained in the field notes.

This plat represents the dependent resurvey of a portion of the subdivisional lines and a portion of the subdivision of section 1, designed to restore the corners in their true original locations according to the best available evidence, and the survey of the subdivision of section 1, and the metes and bounds survey of Parcel A, section 2, T. 32 N., R. 107 W., Sixth Principal Meridian, Wyoming.

Survey executed by James R. Gampetro, Cadastral Surveyor, beginning August 2, 2021, and completed September 8, 2021, pursuant to special instructions and assignment instructions dated July 23, 2021, and supplemental special instructions dated August 30, 2021, for Group No. 1041, Wyoming.

Except as indicated hereon, the lotting and areas are as shown on the plat approved October 21, 1908.

Notes:

Solid lines not showing bearings and distances, unless otherwise noted, were dependently resurveyed by William W. Finnicum in 1975.

NM indicates corner not monumented.

UNITED STATES DEPARTMENT OF THE INTERIOR
BUREAU OF LAND MANAGEMENT

Cheyenne, Wyoming

May 20, 2022

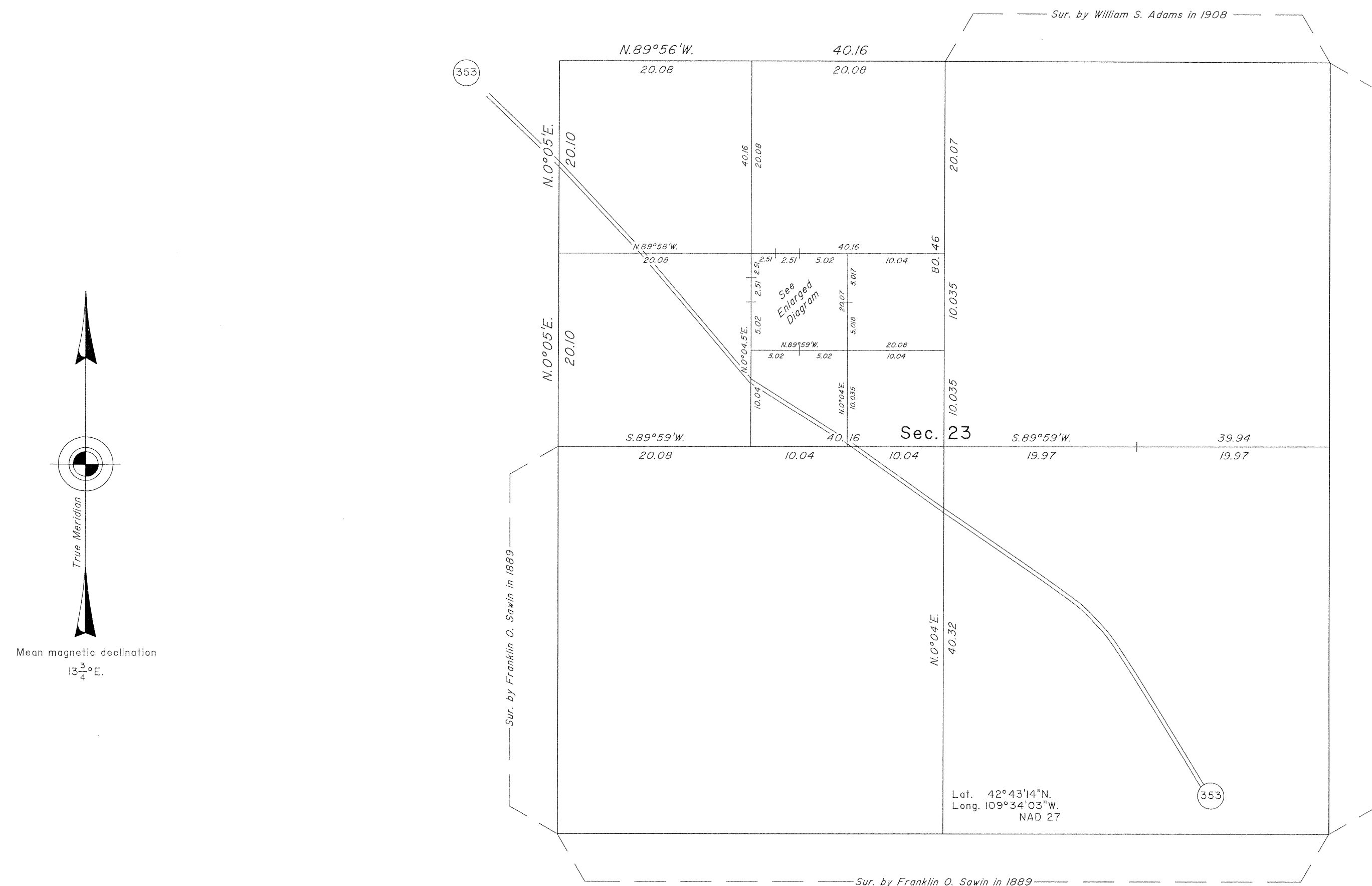
This plat is strictly conformable to the approved field notes, and the survey, having been correctly executed in accordance with the requirements of law and the regulations of this Bureau, is hereby accepted.

For the Director

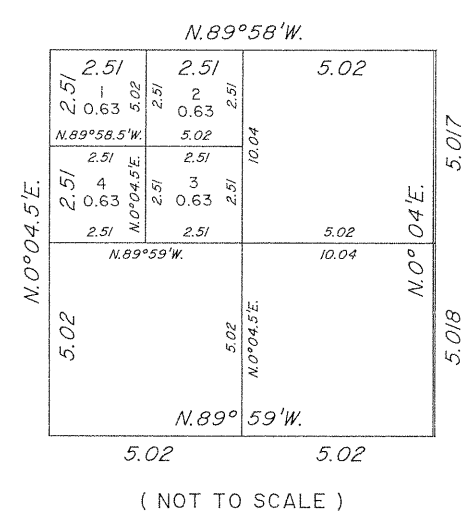
Sonja S. Sparks
Chief Cadastral Surveyor for Wyoming

TOWNSHIP 32 NORTH, RANGE 107 WEST, OF THE SIXTH PRINCIPAL MERIDIAN, WYOMING.

DEPENDENT RESURVEY AND SUBDIVISION OF SECTION 23



ENLARGED DIAGRAM



A history of surveys is contained in the field notes.

This plat represents the dependent resurvey of a portion of the subdivisional lines designed to restore the corners in their true original locations according to the best available evidence, and the subdivision of section 23, T. 32 N., R. 107 W., Sixth Principal Meridian, Wyoming.

The lottings and areas are as shown on the plats approved June 30, 1891, and October 21, 1908.

Survey executed by Thomas E. Casinger, Cadastral Surveyor, beginning July 1, 1996, and completed August 5, 1996, pursuant to Special Instructions dated June 20, 1996, and Supplemental Special Special Instructions dated August 5, 1996, for Group No. 623, Wyoming.

UNITED STATES DEPARTMENT OF THE INTERIOR
BUREAU OF LAND MANAGEMENT

Cheyenne, Wyoming

December 26, 1996

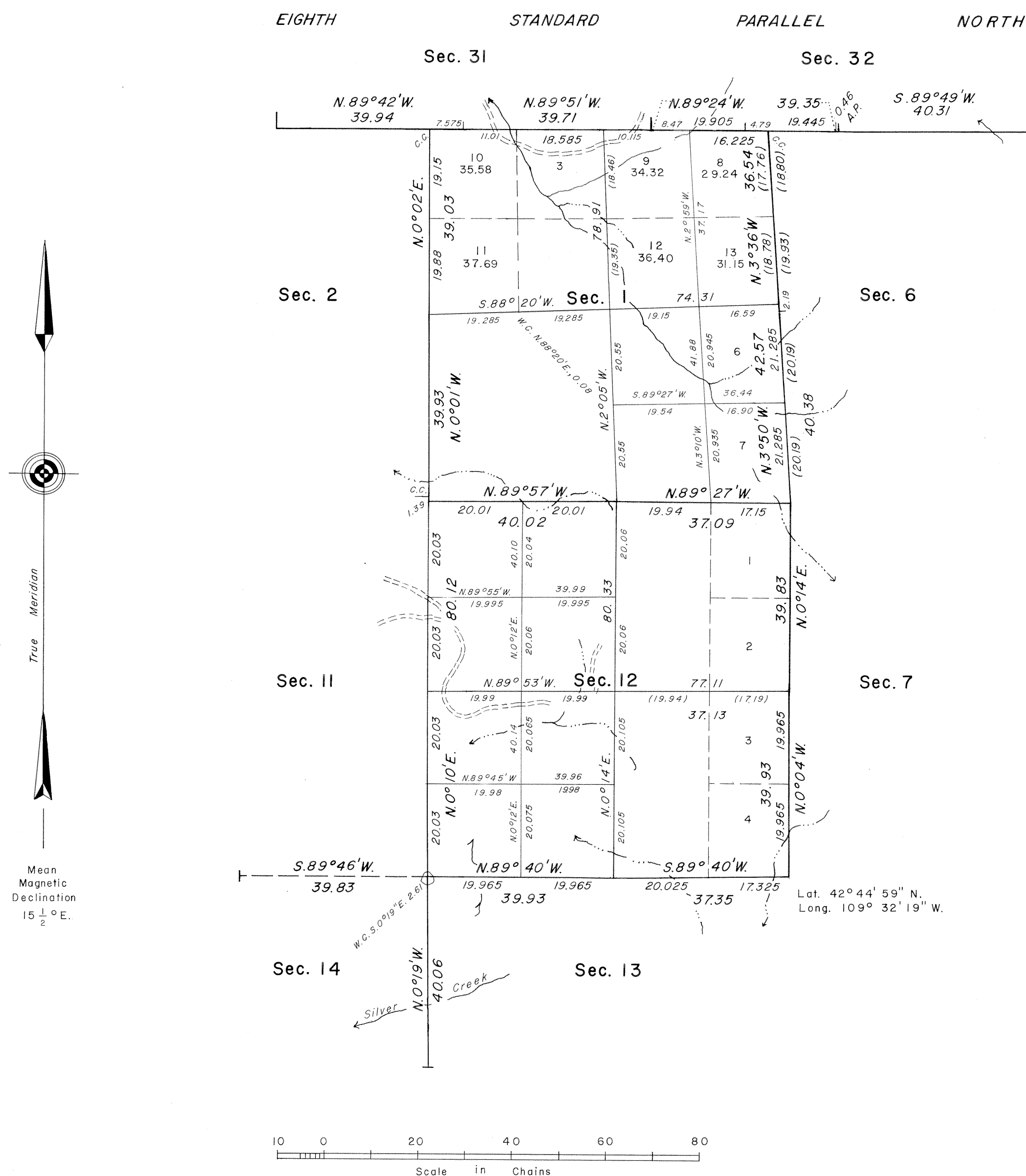
This plat is strictly conformable to the approved field notes, and the survey, having been correctly executed in accordance with the requirements of law and the regulations of this Bureau, is hereby accepted.

For the Director

Jerry L. Messick
Acting Chief Cadastral Surveyor for Wyoming

7414

TOWNSHIP 32 NORTH, RANGE 107 WEST, OF THE SIXTH PRINCIPAL MERIDIAN, WYOMING.
DEPENDENT RESURVEY AND SUBDIVISION OF SECTIONS 1 AND 12.



A history of surveys is contained in the field notes.

A portion of the north boundary was resurveyed concurrently under T. 33 N., R. 106 W., under this group.

This plat represents a dependent resurvey of a portion of the east boundary and a portion of the subdivisional lines, designed to restore the corners in their true original locations according to the best available evidence, and the subdivision of sections 1 and 12, T. 32 N., R. 107 W., Sixth Principal Meridian, Wyoming.

Except as indicated hereon, the lottings and areas are as shown on the plat approved October 21, 1908.

Survey executed by William W. Finnicum, Supervisory Cadastral Surveyor, beginning May 16, 1975, and completed July 10, 1975, pursuant to Special Instructions for Group No. 371 Wyoming dated March 19, 1975.

UNITED STATES DEPARTMENT OF THE INTERIOR
BUREAU OF LAND MANAGEMENT
Washington, D.C. September 19, 1978

This plat is strictly conformable to the approved field notes, and the survey, having been correctly executed in accordance with the requirements of law and the regulations of this Bureau, is hereby accepted.

For the Director

Bernard W. Feltner
Chief, Division of Cadastral Survey

(4-6754)

Fractional Township N^o 32 North, Range N^o 107 West of the Sixth Principal Meridian, Wyoming.



Surveys Designated	By Whom Surveyed	Date of Contract	Amount of Surveys Ch ² Lk ²	When Surveyed
Township lines	Franklin O. Sawin	233, May 13, 1889	15 69 32	Oct. 7-17, 1889
Subdivisions	William S. Adams	331, January 3, 1908	28 19 70	April 20-28, 1908
Retracements	" " "	" " "	11 39 8	" " "
Connections	" " "	" " "	36 13	" " "

The above Map of Township N^o 32 North, of Range N^o 107 West of the Sixth Principal Meridian, Wyoming, is strictly conformable to the field notes of the survey thereof on file in this Office which have been examined and approved.

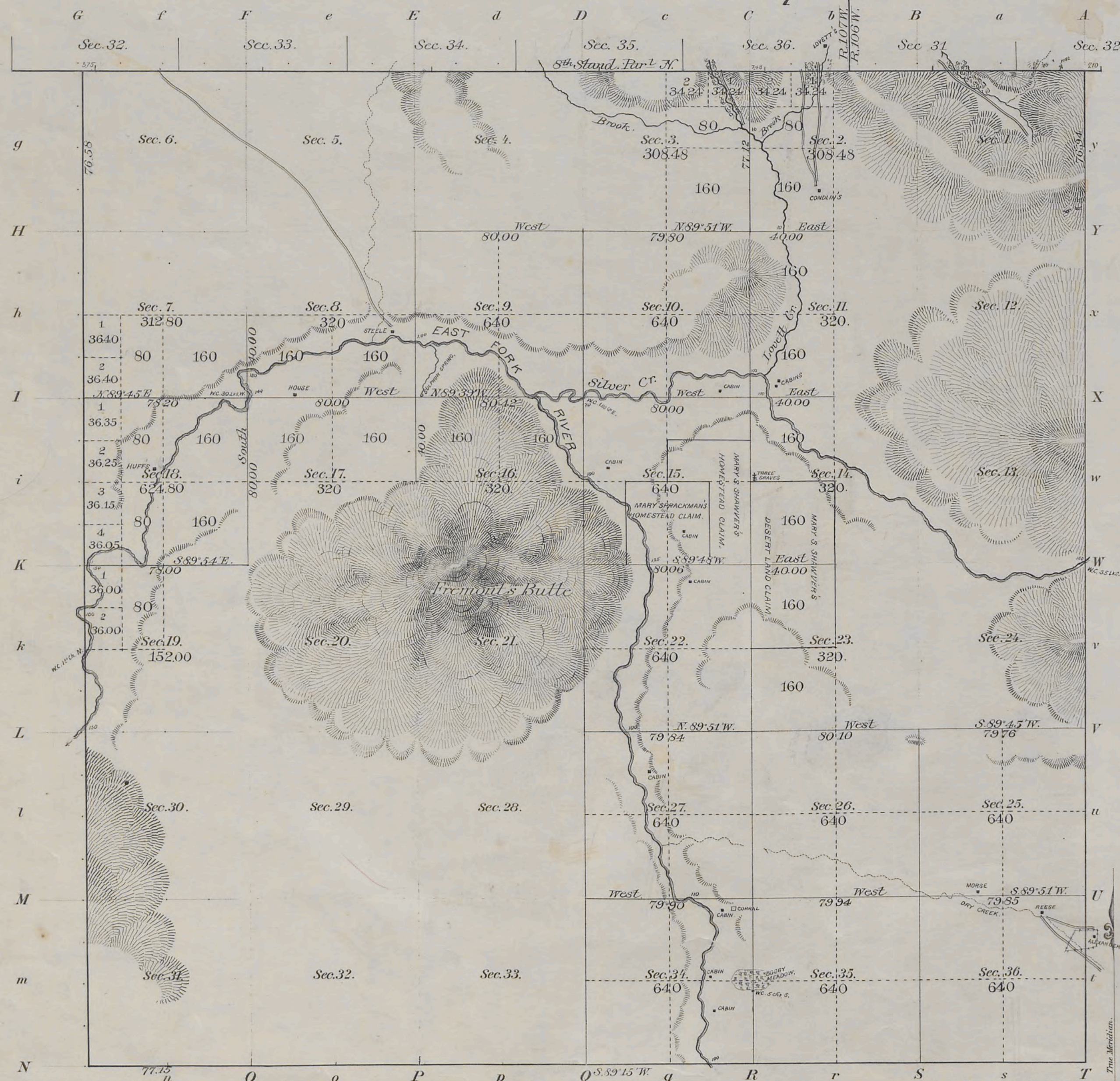
Surveyor General's Office, *Stephen P. [Signature]*
Cheyenne, Wyoming, October 21, 1908. *Sur. Gen.*

32-107

Survey accepted by the Hon. Commissioner in his letter "E" May 20, 1909. Triplicates plat forwarded to the Evanston Land Office May 28, 1909.

2504-A

Township N^o 32 North Range N^o 107 West of the 6th Principal Meridian

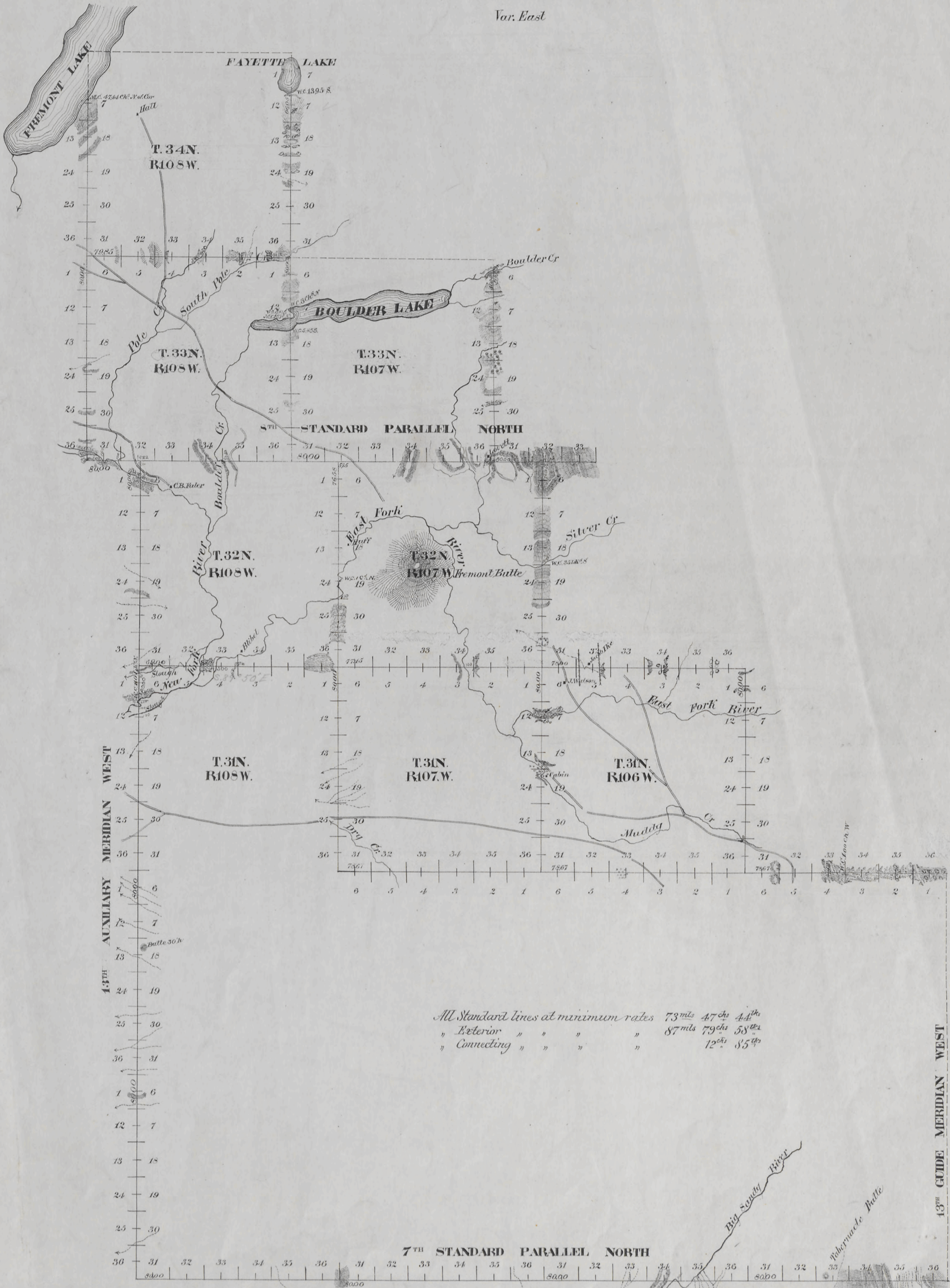


Survey ^y s Designated	By Whom Surveyed	Date of Contract	Amount of Surveys M. Ch. ^s Lk. ^s			When Surveyed	Mean Declination.
Township lines Subdivisions Connections	Franklin O. Sawin	May 13 th 1889	31	32	99	Sept ^r 19-22, 1889	17°12' East.
	— " —	— " —		7	48	— " —	

The above Map of Township 1. S. 32 North of Range 1. W. 107 West of the
Principal Meridian, Wyoming, is strictly conformable to the field
notes of the survey thereof on file in this Office, which have been examined and approved.
Surveyor General's Office, } W^m A. Richards
Cheyenne, Wyo. June 30th 1891 } Sur.^y Gen.^l

EXTERIOR LINES

Scale 1 inch = 2 miles.
Var. East



All Standard lines at minimum rates 73 mls 47 chs 44th
" Exterior " " " 87 mls 79 chs 58th
" Connecting " " " 12th 35th

Survey Designated	By whom Surveyed	Date of Contract	Amount of Survey M ^{ls} Ch ^s L th	When Surveyed	Magnetic Decl ⁿ
7 th Stand Par.	Franklin & Savin	May 13, 1889	24 0 0	Sept 11-15-1889	16° 47' East
13 th Aux Mer	" " "	" " "	34 47 44	Sept. 24-Oct. 6 '89	17° 11' "
8 th Stand Par	" " "	" " "	15 0 0	Oct 7-9 1889	17° 37' "
Exterior Lines	" " "	" " "	87 79 58	Sept 12-13 1889	16° 45' to 18° 36' E
Connections	" " "	" " "	12 85	Sept 16-31 1890	"

The above diagram of the 7th Standard Parallel North in Ranges 105, 106, 107 and 108 West, the 8th Standard Parallel North in Ranges 108, 107 and 106 West, the 13th Auxiliary Meridian West in Townships 29, 30, 31, 32, 33 and 34 North. The Exterior lines of Townships 31 North, Ranges 105, 106, 107 and 108 West; Townships 32 North, Ranges 107 and 108 West; Townships 33 North, Ranges 107 and 108 West, and Township 34 North, Range 108 West of the 6th Principal Meridian in Wyoming, is strictly conformable to the field notes of the survey thereof on file in this office, which have been examined and approved.
Cheyenne Wyoming June 30, 1891
Surveyor General