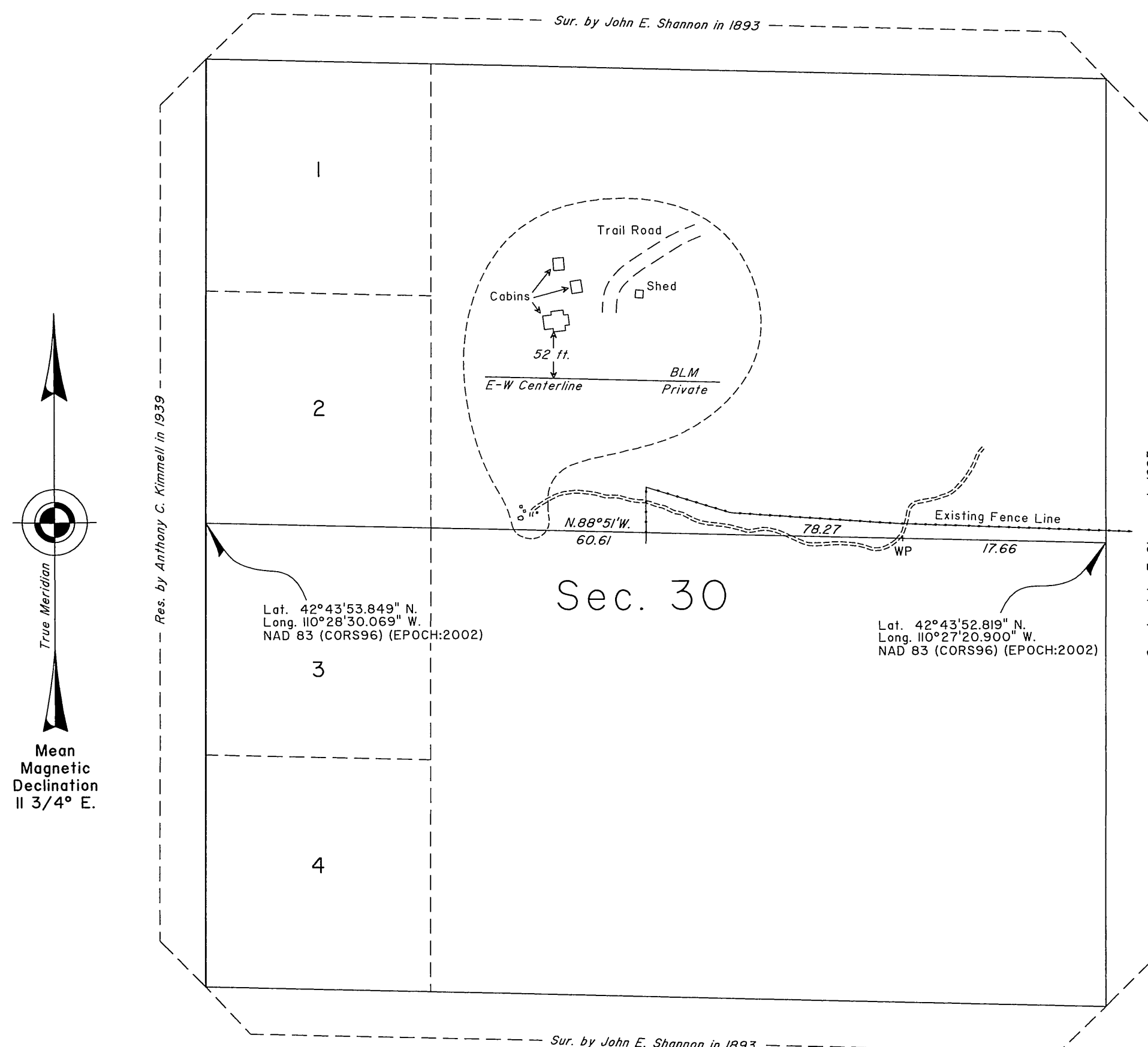


T. 32 N., R. 114 W., Sixth Principal Meridian, Wyoming, Field Note Links

Plat Accession Number(s)	Year(s) of Survey	
Township Subdivision Plats		
8577	2011	See plat for field notes
8552	2010	https://www.wy.blm.gov/cadastral/countyplats/sublette/fieldnotes/t32nr114w_gp815fn.pdf
4657	1893	https://www.wy.blm.gov/cadastral/countyplats/sublette/fieldnotes/t32nr114w_c253fn.pdf
Township Exterior Plats		
4455	1892	https://www.wy.blm.gov/cadastral/countyplats/sublette/fieldnotes/ext2588.pdf

TOWNSHIP 32 NORTH, RANGE 114 WEST, OF THE SIXTH PRINCIPAL MERIDIAN, WYOMING.

SUBDIVISION OF SECTION 30



The 1/4 sec. cor. of secs. 29 and 30, monumented with a granite stone, 12 x 10 x 8 ins., firmly set, projecting 6 ins. above the ground, plainly mkd. 1/4 on the W. face, with a mound of stone, 3 ft. base, 12 ins. high, W. of the cor.

At the cor. point

Set a stainless steel post, 28 ins. long, 2 1/2 ins. diam., 22 ins. in the ground, atop a plastic encased magnetic marker, with brass cap mkd.

T32N R114W
1/4
S 30 | S 29
2011

Bury the mkd. stone alongside the stainless steel post, set a steel fence post nearby, and rehabilitated the mound of stone, 3 ft. base, 24 ins. high, W. of the cor.

Cor. is located on steep S. facing slope, 1.05 chs. S. of a 3 strand barbed wire fence, extending E. and W.

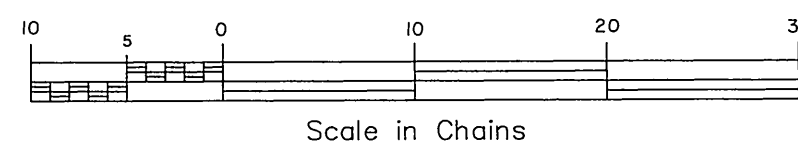
Point selected for a witness point on the E. and W. centerline of sec. 30.

Set a stainless steel post, 28 ins. long, 2 1/2 ins. diam., 24 ins. in the ground, atop a plastic encased magnetic marker, with brass cap mkd.

WP
T32N R114W
S 30
C ——— C

2011

Cor. is located 38 lks. E. of center of trail road, bears NNE. and SSW. on curve.



SURVEY INFORMATION AND CERTIFICATE

This plat represents the entire record of the survey of the subdivision of section 30, Township 32 North, Range 114 West, Sixth Principal Meridian, Wyoming.

The history of earlier surveys pertaining to this survey is as follows:

John E. Shannon surveyed the eighth standard parallel north through ranges 113 and 114 west, and the south, east and west boundaries in 1892, and the subdivisional lines in 1893. Anthony C. Kimmell resurveyed the west boundary in 1939.

Lottings and areas are as shown on the plat approved June 25, 1894.

The area embraced by this survey is situated in the western portion of Sublette County, approximately 22 miles northwest of Big Piney, Wyoming. The average elevation of the area is 8700 feet above sea level. The terrain is primarily mountainous with a thick cover of pine and aspen and numerous small streams and brooks. Stock grazing was observed during the course of this survey. Primary access is provided by BLM Road 5217. Secondary access consists of improved and unimproved trail roads.

The survey was executed with Trimble Model 5800 Global Positioning System (GPS) receivers. The GPS procedures used were in accordance with IM No. 2010-094, "Incorporating Standards for the Positional Accuracy of Cadastral Surveys When Using Global Navigation Satellite Systems", dated April 1, 2010. The directions of all lines are referenced to the true meridian. The directions, distances, and geographic positions were determined by GPS observations. GPS control and supporting data are contained in the official group file.

I, Bradley F. Dillon, Cadastral Surveyor, HEREBY CERTIFY upon honor that, in pursuance of Special Instructions dated August 15, 2011, and Assignment Instructions dated August 15, 2011, for Group Number 847, Wyoming, I have surveyed the subdivision of section 30, Township 32 North, Range 114 West, Sixth Principal Meridian, Wyoming, and that this plat in one sheet represents the entire record of this survey. Survey commenced September 13, 2011, and completed September 15, 2011, and has been made in strict conformity with the special instructions, the Manual of Instructions for the Survey of the Public Lands of the United States, 2009, and in specific manner described hereon.

Bradley F. Dillon
Bradley F. Dillon
Cadastral Surveyor

February 27, 2012
Date

The 1/4 sec. cor. of sec. 30 only, on the W. bdy. of the Tp., monumented with an iron post, 1 in. diam., firmly set, projecting 9 ins. above ground, in a mound of stone, 3 ft. base, 7 ins. high, aluminum sign post nearby, with brass cap mkd.

1/4
| S 30
1939

Cor. is located on a moderately steep, E. facing slope.

From this point, the 1/4 sec. cor. of sec. 25 only, T. 32 N., R. 115 W., monumented with an iron post, 1 in. diam., firmly set, projecting 9 ins. above ground, in a mound of stone, 3 ft. base, 7 ins. high, aluminum sign post nearby, bears N. 4° 49' E., 11.5 lks. dist., with brass cap mkd.

1/4
| S 25
1939

Cor. is located on a moderately steep, E. facing slope, 7 lks. W. of abandoned fence, extending N. and S.

UNITED STATES DEPARTMENT OF THE INTERIOR
BUREAU OF LAND MANAGEMENT

Cheyenne, Wyoming

February 27, 2012

This plat representing the entire record of this survey, having been correctly executed in accordance with the requirements of law and the regulations of this Bureau, is hereby accepted.

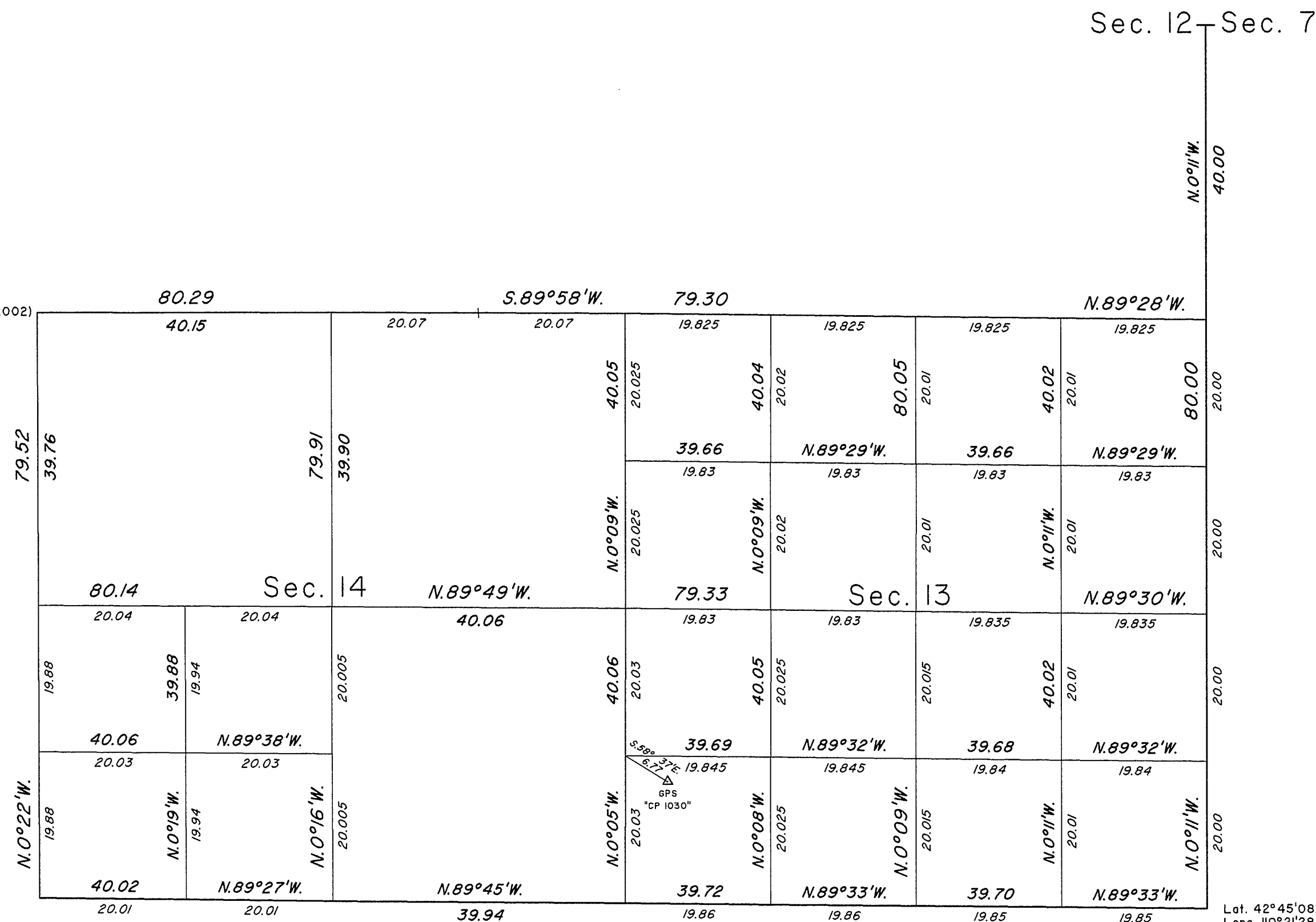
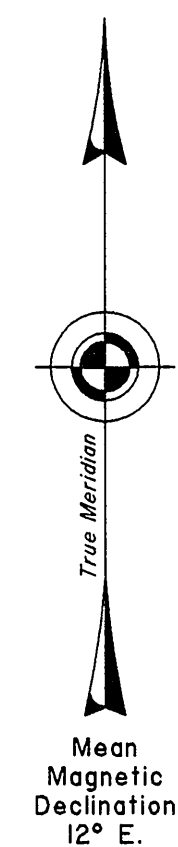
For the Director

John P. Lee
John P. Lee
Chief Cadastral Surveyor for Wyoming

TOWNSHIP 32 NORTH, RANGE 114 WEST, OF THE SIXTH PRINCIPAL MERIDIAN, WYOMING.

DEPENDENT RESURVEY AND SUBDIVISION OF SECTIONS 13 AND 14

Lat. 42°46'01.041"N.
Long. 110°23'49.722"W.
NAD 83(CORS 96)(EPOCH 2002)



Lat. 42°45'08.454"N.
Long. 110°21'28.344"W.
NAD 83(CORS 96)(EPOCH 2002)

A history of surveys is contained in the field notes.

This plat represents the dependent resurvey of a portion of the east boundary, and a portion of the subdivisional lines, designed to restore the corners in their true original locations according to the best available evidence, and the subdivision of sections 13 and 14, T. 32 N., R. 114 W., Sixth Principal Meridian, Wyoming.

Except as indicated hereon, the lotting and areas are as shown on the plat approved June 25, 1894.

Survey executed by Sonja S. Sparks, Cadastral Surveyor, beginning June 29, 2010, and completed July 13, 2010, pursuant to Special Instructions dated April 8, 2010, and Assignment Instructions dated June 28, 2010, for Group No. 815, Wyoming.

UNITED STATES DEPARTMENT OF THE INTERIOR
BUREAU OF LAND MANAGEMENT

Cheyenne, Wyoming

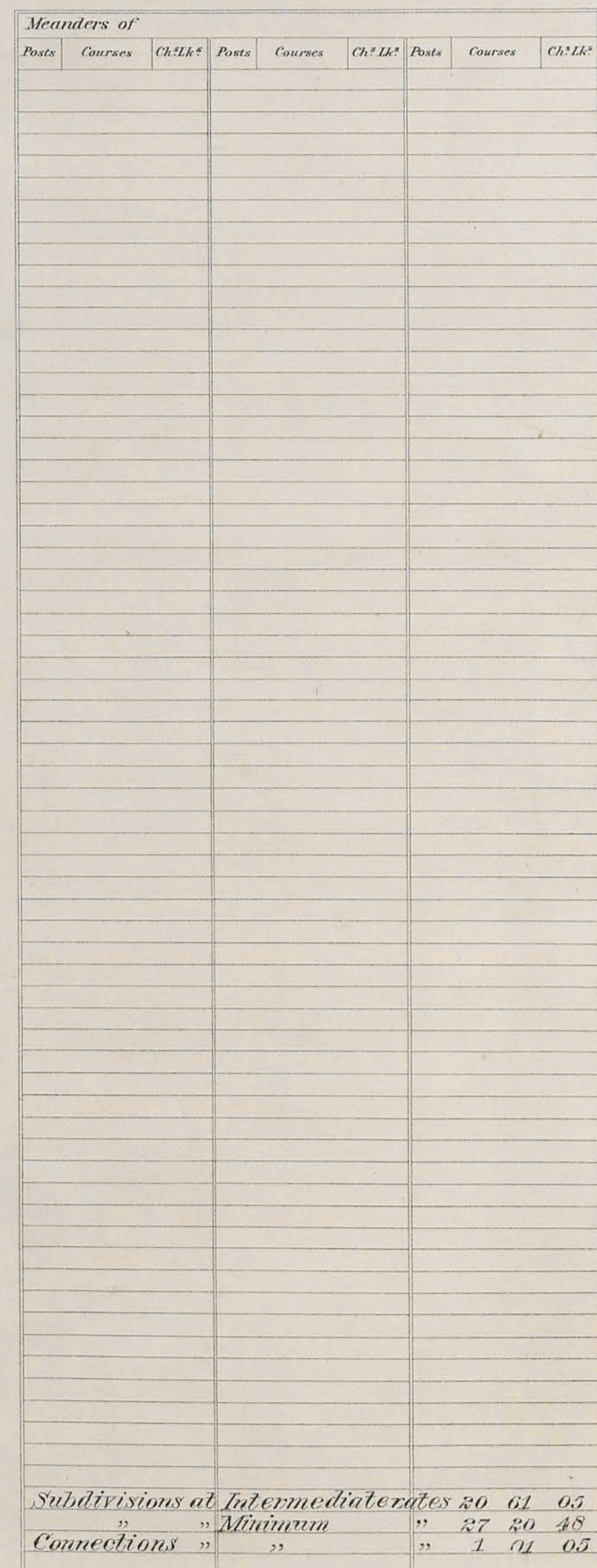
February 24, 2011

This plat is strictly conformable to the approved field notes, and the survey, having been correctly executed in accordance with the requirements of law and the regulations of this Bureau, is hereby accepted.

For the Director

John P. Lee
John P. Lee

Chief Cadastral Surveyor for Wyoming

Township N^o 32 North, Range N^o 114 West of the 6th Principal Meridian[illegible]

The above Map of Township 1.332 North of Range 1.114 West of the 6th Principal Meridian, Wyoming, is strictly conformable to the field notes of the survey thereof on file in this Office, which have been examined and approved.

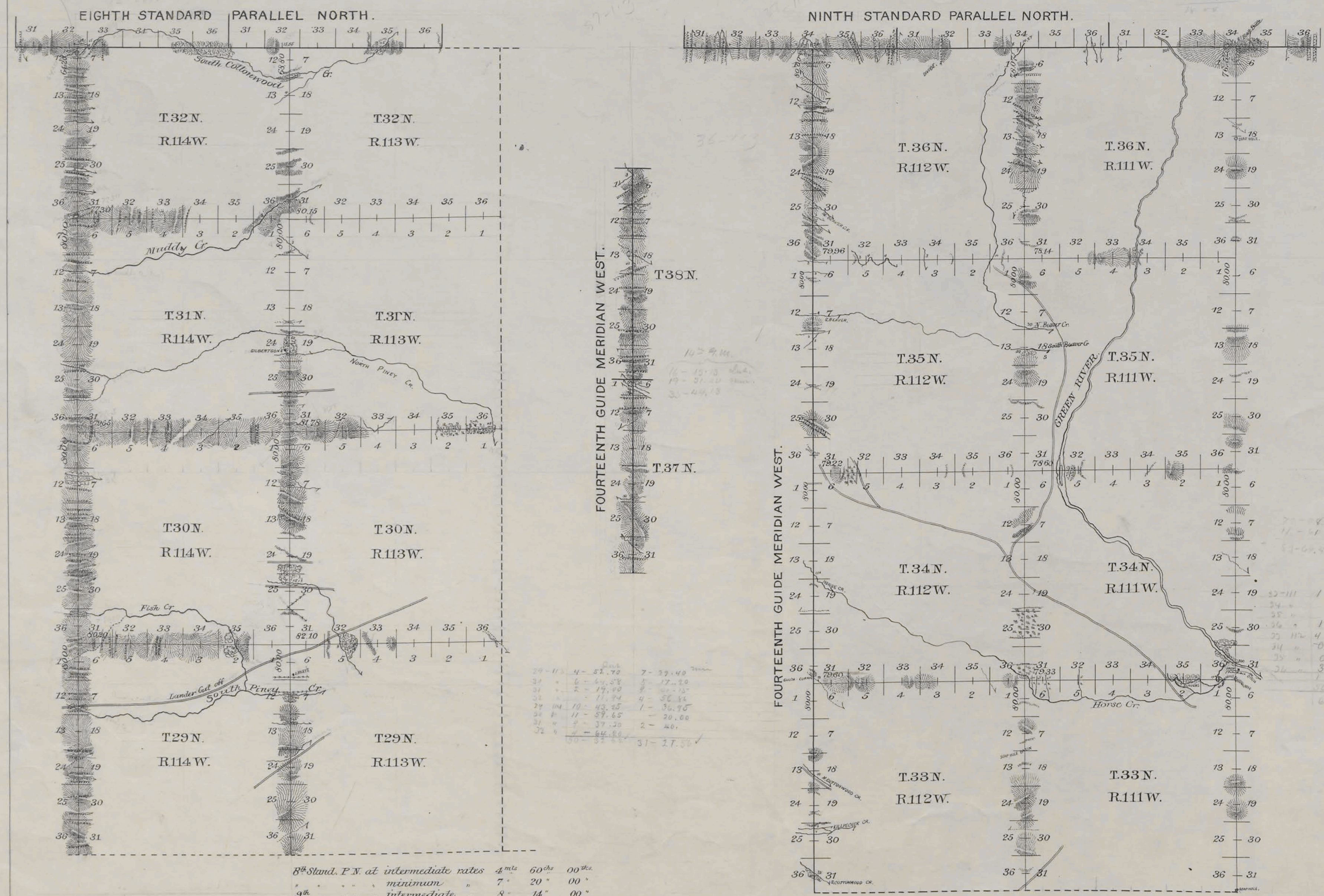
Surveyor General's Office.
Cheyenne Wyo. June 25 1894

Perry B. Bickford
Sur. Gen.

31
Indexed 4455

EXTERIOR LINES.

Scale 2 miles to 1 inch. Magnetic Variation East.



29-11 4-51.72 7-29.40
31-6-17.58 8-17.20
31-2-17.58 8-17.20
31-10-17.58 8-17.20
31-11-17.58 8-17.20
31-12-17.58 8-17.20
31-13-17.58 8-17.20
31-14-17.58 8-17.20
31-15-17.58 8-17.20
31-16-17.58 8-17.20
31-17-17.58 8-17.20
31-18-17.58 8-17.20
31-19-17.58 8-17.20
31-20-17.58 8-17.20
31-21-17.58 8-17.20
31-22-17.58 8-17.20
31-23-17.58 8-17.20
31-24-17.58 8-17.20
31-25-17.58 8-17.20
31-26-17.58 8-17.20
31-27-17.58 8-17.20
31-28-17.58 8-17.20
31-29-17.58 8-17.20
31-30-17.58 8-17.20
31-31-17.58 8-17.20
31-32-17.58 8-17.20
31-33-17.58 8-17.20
31-34-17.58 8-17.20
31-35-17.58 8-17.20
31-36-17.58 8-17.20
31-37-17.58 8-17.20
31-38-17.58 8-17.20
31-39-17.58 8-17.20
31-40-17.58 8-17.20
31-41-17.58 8-17.20
31-42-17.58 8-17.20
31-43-17.58 8-17.20
31-44-17.58 8-17.20
31-45-17.58 8-17.20
31-46-17.58 8-17.20
31-47-17.58 8-17.20
31-48-17.58 8-17.20
31-49-17.58 8-17.20
31-50-17.58 8-17.20
31-51-17.58 8-17.20
31-52-17.58 8-17.20
31-53-17.58 8-17.20
31-54-17.58 8-17.20
31-55-17.58 8-17.20
31-56-17.58 8-17.20
31-57-17.58 8-17.20
31-58-17.58 8-17.20
31-59-17.58 8-17.20
31-60-17.58 8-17.20
31-61-17.58 8-17.20
31-62-17.58 8-17.20
31-63-17.58 8-17.20
31-64-17.58 8-17.20
31-65-17.58 8-17.20
31-66-17.58 8-17.20
31-67-17.58 8-17.20
31-68-17.58 8-17.20
31-69-17.58 8-17.20
31-70-17.58 8-17.20
31-71-17.58 8-17.20
31-72-17.58 8-17.20
31-73-17.58 8-17.20
31-74-17.58 8-17.20
31-75-17.58 8-17.20
31-76-17.58 8-17.20
31-77-17.58 8-17.20
31-78-17.58 8-17.20
31-79-17.58 8-17.20
31-80-17.58 8-17.20
31-81-17.58 8-17.20
31-82-17.58 8-17.20
31-83-17.58 8-17.20
31-84-17.58 8-17.20
31-85-17.58 8-17.20
31-86-17.58 8-17.20
31-87-17.58 8-17.20
31-88-17.58 8-17.20
31-89-17.58 8-17.20
31-90-17.58 8-17.20
31-91-17.58 8-17.20
31-92-17.58 8-17.20
31-93-17.58 8-17.20
31-94-17.58 8-17.20
31-95-17.58 8-17.20
31-96-17.58 8-17.20
31-97-17.58 8-17.20
31-98-17.58 8-17.20
31-99-17.58 8-17.20
31-100-17.58 8-17.20

8th Stand. P. N. at intermediate rates 4th 60th 00th
minimum 7' 20" 00"
9th " " intermediate 8' 14" 00"
minimum 9' 66" 00"
14th Guide M. W. intermediate 16' 13' 13"
minimum 19' 31' 00"
Township lines intermediate 62' 13' 68"
minimum 103' 29' 94"
Connecting lines at minimum rates 0th 14th 96th

Surveys Designated.	By Whom Surveyed.	Date of Contract.	Amount of Surveys.	When Surveyed.	Magnetic Declination.
8th Stand. Par. N.	Shannon & Shannon	Sept 2 ^d 1892	12 00 00	Oct. 3 ^d 1892	17° 55' - 18° 02' East
9th Stand. Par. N.	" "	" "	18 00 00	Sept 30-Oct 2, 1892	18° 06' - 18° 10' East
14th Guide Mer. W.	" "	" "	35 4.4 13	Sept 25-30, 1892	17° 54' - 18° 20' East
Township lines	" "	" "	165 4.3 62	Oct 4-Nov 17, 1892	17° 39' East
Connections.	" "	" "	14 96	" "	" "

I hereby certify that the above diagram of the Exterior lines of Townships 33, 34, 35 and 36 North, Ranges 111 and 112 West, Townships 29, 30, 31 and 32 North, Ranges 113, and 114 West, the 8th and 9th Standard Parallels North and the 14th Guide Meridian, west of the 6th Principal Meridian, Wyoming, is strictly conformable to the field notes of survey thereof on file in this office, which have been examined and approved.
Surveyor General's Office,
Cheyenne, Wyo. April 19, 1893.

N. A. Richards
U.S. Surveyor General