

T. 33 N., R. 108 W., Sixth Principal Meridian, Wyoming, Field Note Links

Plat Accession Number(s)	Year(s) of Survey	
Township Subdivision Plats		
8756	2016-18	https://www.wy.blm.gov/cadastral/countyplats/sublette/fieldnotes/t33nr108w_gp955fn.pdf
-	1969	https://www.wy.blm.gov/cadastral/countyplats/sublette/fieldnotes/t33nr108w_gp262fn.pdf
6969	1963	https://www.wy.blm.gov/cadastral/countyplats/sublette/fieldnotes/t33nr108w_gp287fn_s11-14.pdf
4345	1889	https://www.wy.blm.gov/cadastral/countyplats/sublette/fieldnotes/t33nr108w_c233fn.pdf
Township Exterior Plats		
4686	1896	https://www.wy.blm.gov/cadastral/countyplats/sublette/fieldnotes/ext2763.pdf
4321	1889	https://www.wy.blm.gov/cadastral/countyplats/sublette/fieldnotes/ext2492.pdf

DEPENDENT RESURVEY



This plat represents the dependent resurvey of a portion of the subdivisional lines, designed to restore the corners in their true original locations according to the best available evidence, T. 33 N., R.108 W., Sixth Principal Meridian, Wyoming.

Lotting and areas are as shown on the plat approved
June 30, 1891.

Survey executed by Olan T. Shockley, Cadastral Surveyor, beginning June 27, 2016, and completed October 18, 2018, pursuant to special instructions and assignment instructions dated June 6, 2016, and supplemental special instructions dated September 9, 2016 for Group No. 955, Wyoming.

UNITED STATES DEPARTMENT OF THE INTERIOR
BUREAU OF LAND MANAGEMENT

Cheyenne, Wyoming

April 1, 2019

This plat is strictly conformable to the approved field notes, and the survey, having been correctly executed in accordance with the requirements of law and the regulations of this Bureau, is hereby accepted.

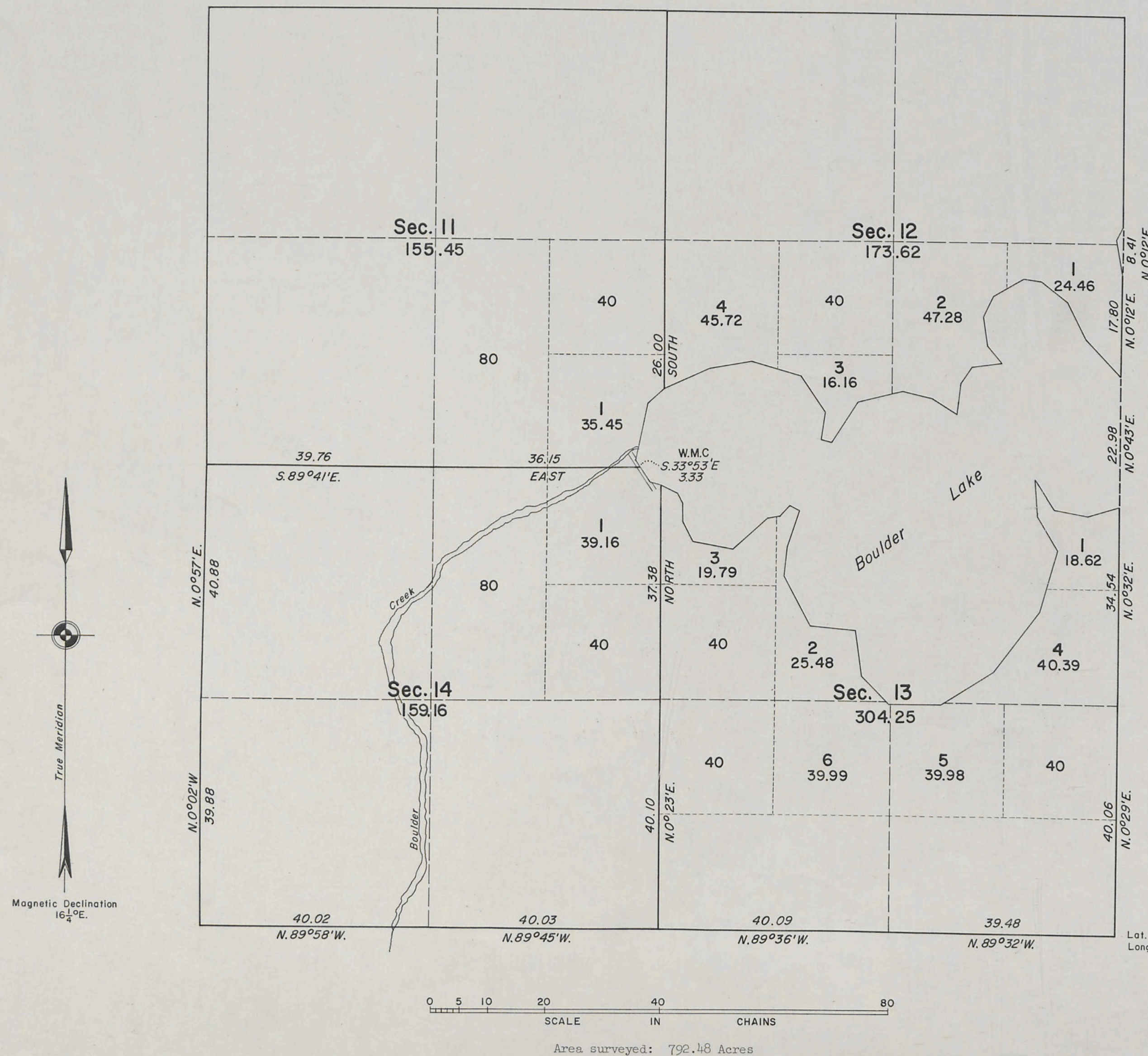
For the Director

Sonja S. Sparks
Chief Cadastral Surveyor for Wyoming

TOWNSHIP 33 NORTH, RANGE 108 WEST, OF THE SIXTH PRINCIPAL MERIDIAN, WYOMING.

EXTENSION SURVEY

Completing The Survey Of Lands In Sections 11, 12, 13 & 14



UNITED STATES DEPARTMENT OF THE INTERIOR
BUREAU OF LAND MANAGEMENT
Washington, D. C. November 2, 1964

This plat is strictly conformable to the approved field notes, and the survey, having been correctly executed in accordance with the requirements of law and the regulations of this Bureau, is hereby accepted.

For the Director

E. E. Huntington
Chief, Division of Engineering

Filed with Land Office Dec. 10, 1964.

Township N^o 33 North , Range N^o 108 West of the 6th Principal Meridian

<i>Surveys Designated</i>	<i>By Whom Surveyed</i>	<i>Date of Contract</i>	<i>Amount of Surveys</i> <i>M. Chs. Ecs.</i>	<i>When Surveyed</i>	<i>Magnetic Declination</i>
<i>Township lines</i>					
<i>Subdivisions</i>	<i>Franklin O. Scam</i>	<i>May, 13 - 1889</i>	<i>57 43 00</i>	<i>Oct. 31 to Nov. 5 1889</i>	<i>17° 45' East.</i>

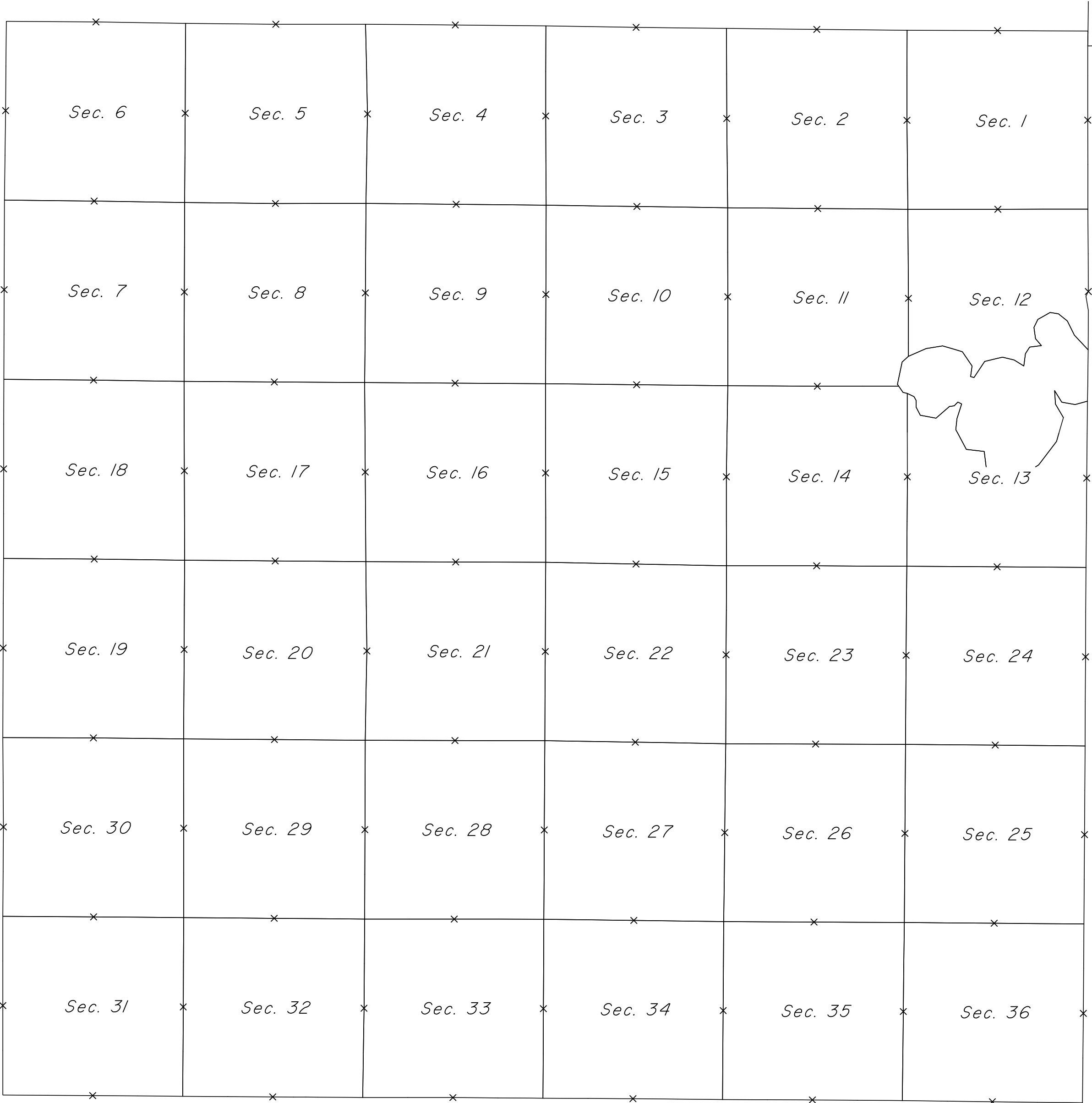
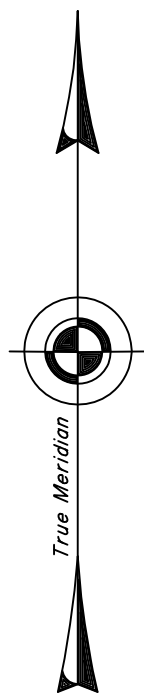
The above Map of Township N. 33. North of Range N. 108 West of the 6th Principal Meridian in Wyoming is shewn conformable to the field notes of the survey thereof on file in this Office, which have been examined and approved.

Surveyor General's Office.
Cherokee Wyo. JUNE 30th 1891

Wm A. Richards
Sur. Gen.

TOWNSHIP 33 NORTH, RANGE 108 WEST OF THE SIXTH PRINCIPAL MERIDIAN, WYOMING.

INDEX TO CORNER REMONUMENTATION WITHOUT SURVEY



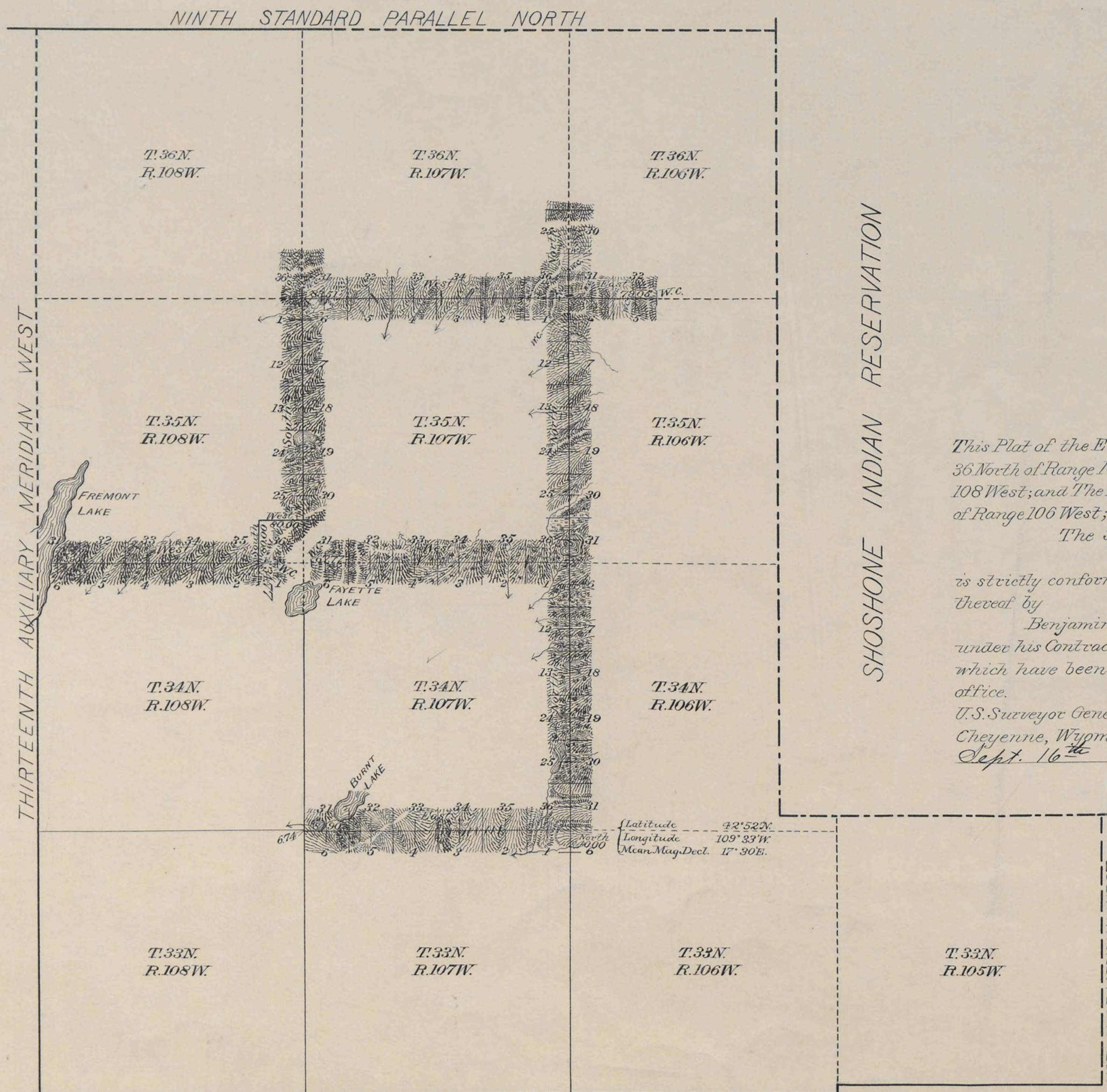
NOT TO SCALE

LEGEND

Remonumented Corner as Indicated

EIGHTH STANDARD PARALLEL NORTH

TOWNSHIP EXTERIORS



This Plat of the East Boundaries of Townships 34, 35 and 36 North of Range 107 West and Township 35 North of Range 108 West; and The North Boundaries of Townships 35 North of Range 106 West; 33, 34 and 35 North of Range 108 West of The Sixth Principal Meridian Wyoming

is strictly conformable to the field notes of the survey thereof by Benjamin A. Hart, U.S. Deputy Surveyor under his Contract No. 263, Dated May 23rd 1896, which have been examined, approved and filed in this office.

U.S. Surveyor General's Office

Cheyenne, Wyoming

Sept. 16th 1898.

Stephen P. Hansen
U.S. Sur. Gen.

Latitude 42° 52' N.
Longitude 109° 33' W.
Mean Mag. Decl. 17° 30' E.

EIGHTH STANDARD PARALLEL NORTH

Scale: 1 inch to 160 chains

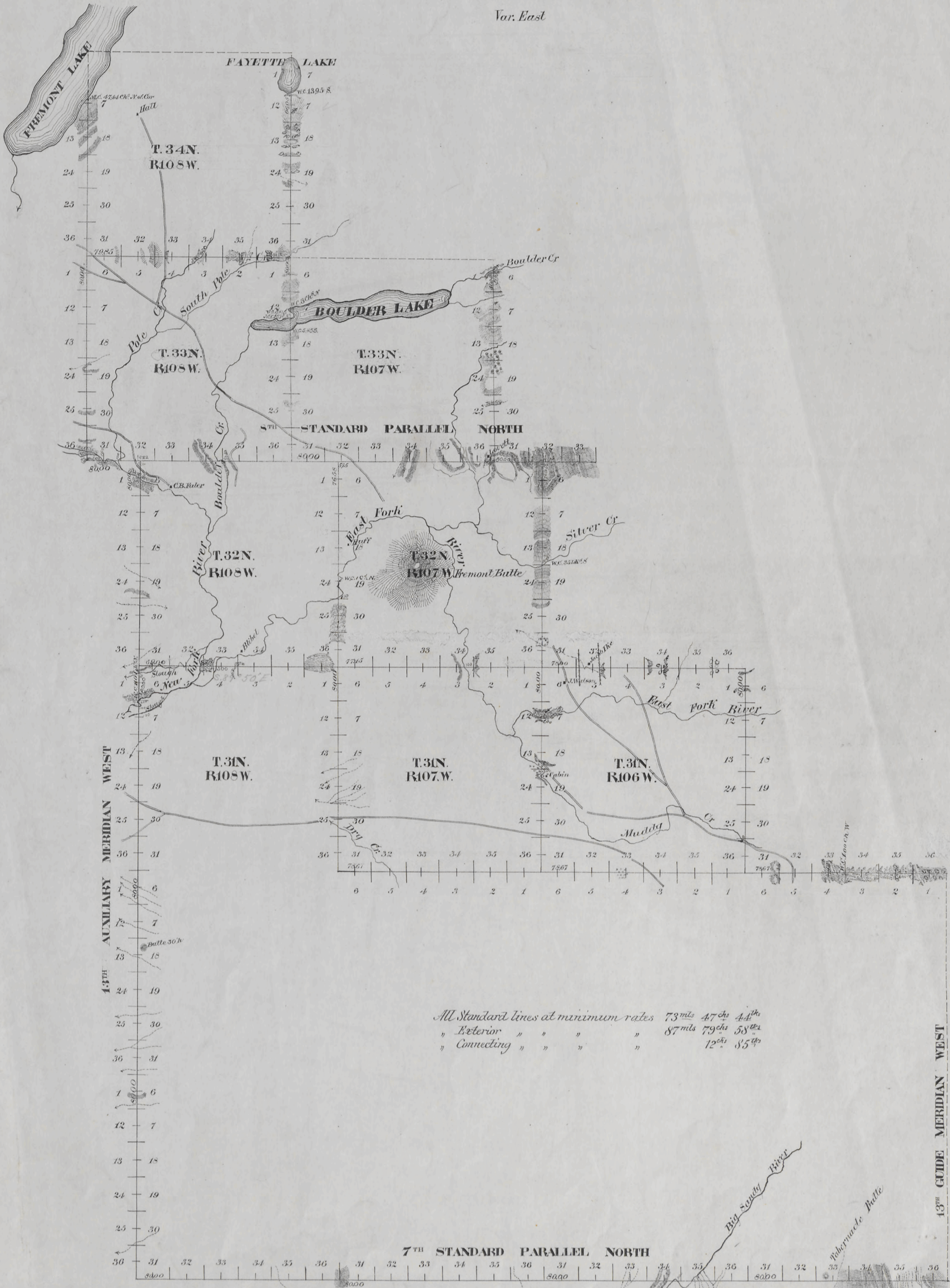
Lines Designated	Table of Mileage			When Surveyed
	M ^{is}	C ^{ts}	F ^{ts}	
Township Lines	45	33	90	June 24-July 17, 1896
Connecting "	6	74	" 29	" "

Approved by Comm. letter June 10, 1898.
" " " " April 15, 1901.

F.H.A.

EXTERIOR LINES

Scale 1 inch = 2 miles.
Var. East



All Standard lines at minimum rates 73 mls 47 chs 44 ft
" Exterior " " " 87 mls 79 chs 58 ft
" Connecting " " " 12 chs 35 ft

Survey Designated	By whom Surveyed	Date of Contract	Amount of Survey M ² Ch ² L ²	When Surveyed	Magnetic Decl ⁿ
7th Stand Par	Franklin & Savin	May 13, 1889	24 0 0	Sept 11-15-1889	16° 47' East
13th Aux Mer	" " "	" " "	34 47 44	Sept 24-Oct 6-89	17° 11' "
8th Stand Par	" " "	" " "	15 0 0	Oct 7-9-1889	17° 37' "
Exterior Lines	" " "	" " "	87 79 58	Sept 12-13-1889	16° 45' to 18° 36' B
Connections	" " "	" " "	12 85	Sept 16-31-1889	"

The above diagram of the 7th Standard Parallel North in Ranges 105, 106, 107 and 108 West, the 8th Standard Parallel North in Ranges 108, 107 and 106 West, the 13th Auxiliary Meridian West in Townships 29, 30, 31, 32, 33 and 34 North. The Exterior lines of Townships 31 North, Ranges 105, 106, 107 and 108 West; Townships 32 North, Ranges 107 and 108 West; Townships 33 North, Ranges 107 and 108 West, and Township 34 North, Range 108 West of the 6th Principal Meridian in Wyoming, is strictly conformable to the field notes of the survey thereof on file in this office, which have been examined and approved.
Cheyenne Wyoming June 30, 1891
Surveyor General