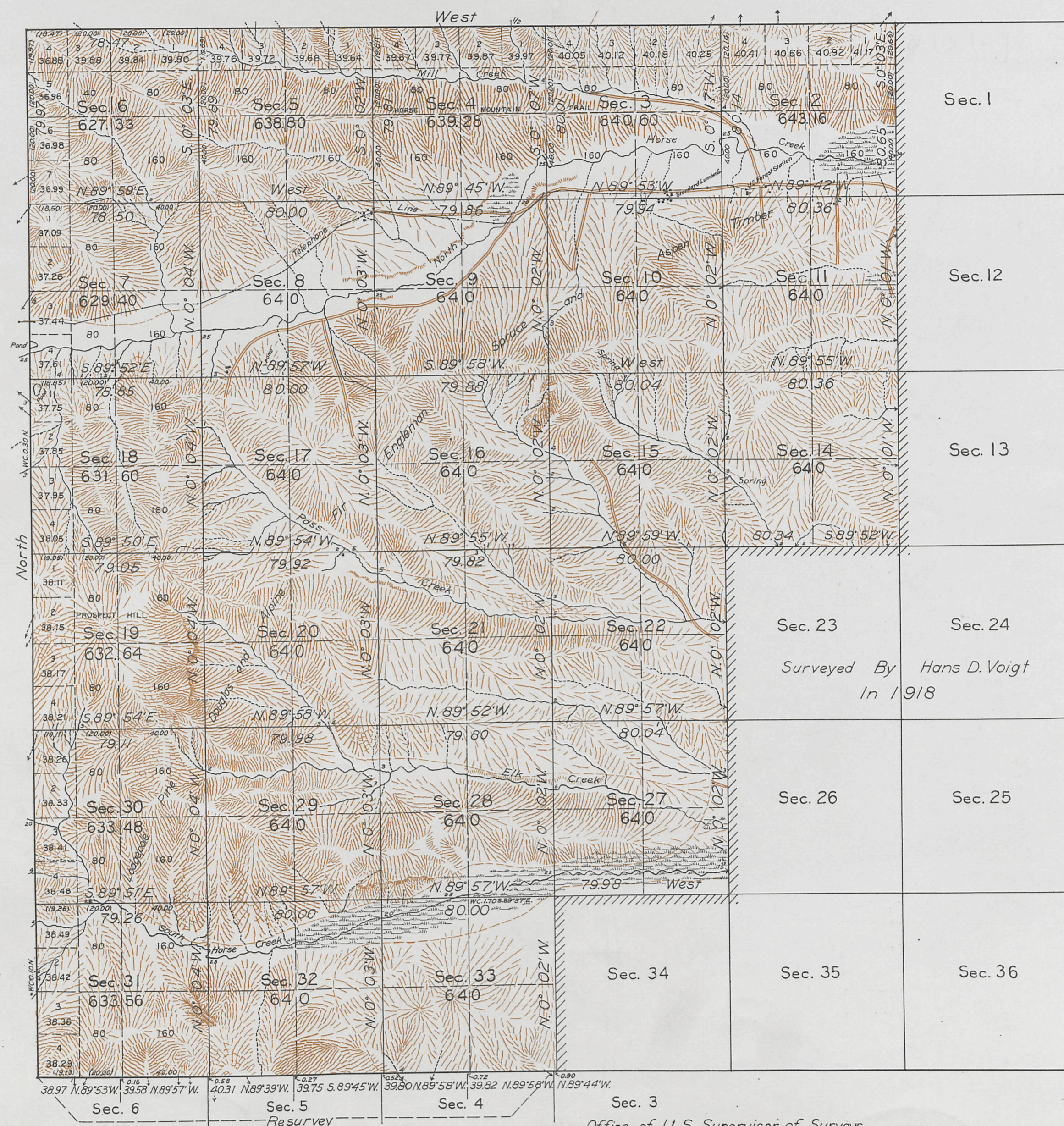


T. 34 N., R. 114 W., Sixth Principal Meridian, Wyoming, Field Note Links

Plat Accession Number(s)	Year(s) of Survey	Township Subdivision Plats	
4947	1930	https://www.wy.blm.gov/cadastral/countyplats/sublette/fieldnotes/t34nr114w_gp110fn.pdf	
4946	1918	https://www.wy.blm.gov/cadastral/countyplats/sublette/fieldnotes/t34nr114w_gp046fn.pdf	

TOWNSHIP No. 34 NORTH, RANGE No. 114 WEST OF THE SIXTH PRINCIPAL MERIDIAN, WYOMING



Surveyed By Hans D. Voigt
In 1918

Latitude 42° 52' N.
Longitude 110° 23' W.

Scale: 40 Chains to an Inch

Area Surveyed 16,589.85 Acres

LINES DESIGNATED	BY WHOM SURVEYED	GROUP		MILEAGE		WHEN SURVEYED	
		No.	DATE	MLS.	CHS.	BEGUN	COMPLETED
Exterior	Emil Voigt	110	March 17, 1930	13	76.67	June 9, 1930	August 16, 1930
Subdivisional	"	"	"	40	74.62	"	"

Sec. 3
Office of U. S. Supervisor of Surveys
Denver, Colorado, April 22, 1932.

The above plat of Township No. 34 North, Range No. 114 West of the Sixth Principal Meridian, Wyoming, is strictly conformable to the field notes of the resurvey thereof which have been examined and approved.

DEPARTMENT OF THE INTERIOR
GENERAL LAND OFFICE
Washington, D. C., September 14, 1932.

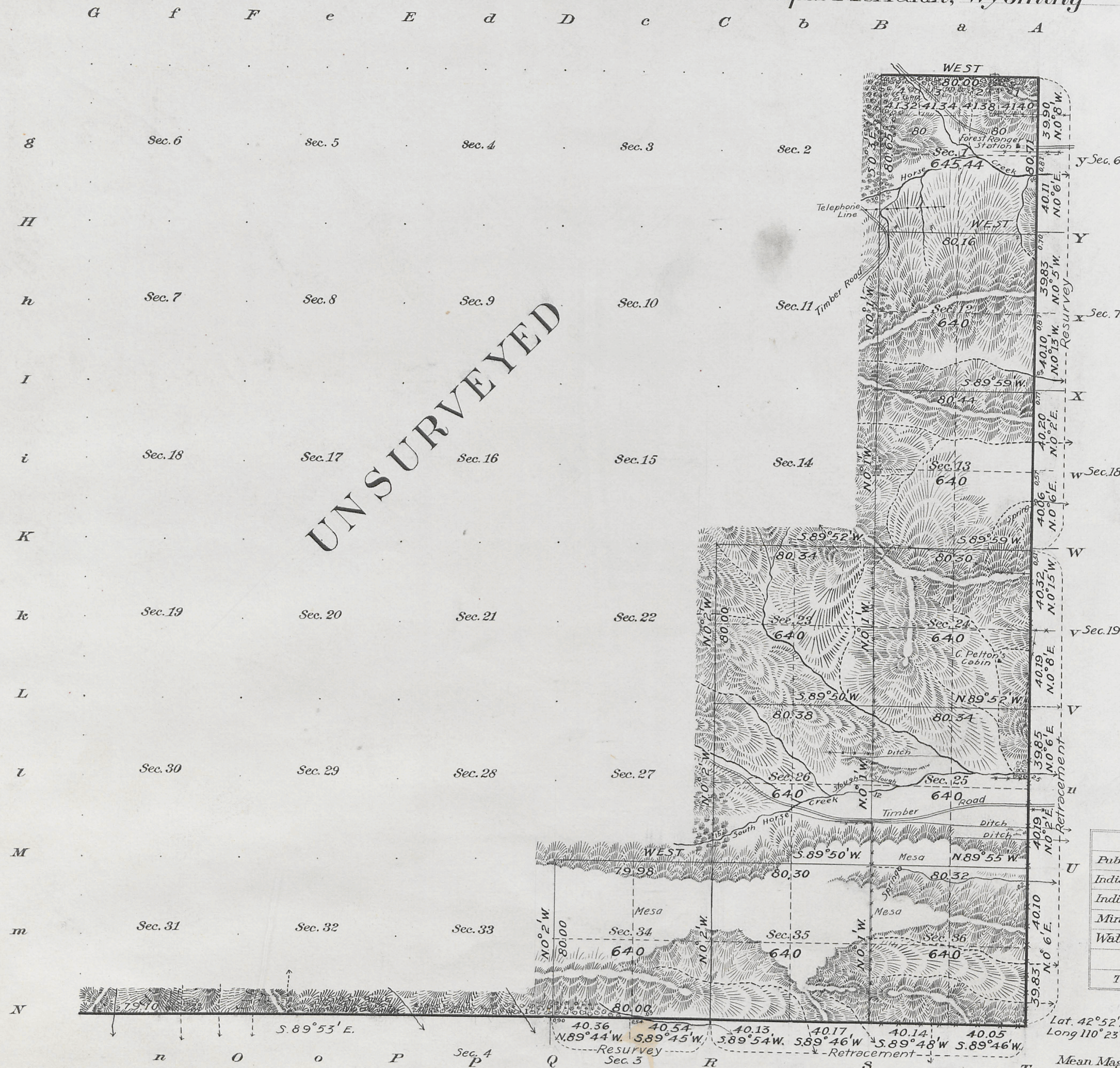
The resurvey represented by this plat, having been correctly executed in accordance with the requirements of law and the regulations of this office is hereby accepted.

Emil Voigt
U. S. Supervisor of Surveys

Thomas H. Smith
Assistant Commissioner M.J.L.

Township No. 34 North Range No. 114 West of the Sixth Principal Meridian, Wyoming

Survey accepted March 29, 1920 G.L.O.



Areas in Acres.	
Public Land	6,405.44
Indian Reservation	
Indian Allotments	
Mineral Claims	
Water Surface	
Total Area	6,405.44

Surveys Designated.	By Whom Surveyed.	No.	Group Date	Amount of Surveys			When Surveyed.	
				Mls.	chs.	lks.	Began.	Completed.
North Bdy.	Hans D. Voigt	46	Feb. 4, 1918	1	00	00	Aug. 23, 1918	Aug. 23, 1918
South " Ret.	" " "	"	" " "	2	00	49	" 15 "	" 15 "
" " Resurv.	" " "	"	" " "	1	00	90	" 20 "	" 20 "
East " Ret.	" " "	"	" " "	3	00	48	" 14 "	" 14 "
" " Resurv.	" " "	"	" " "	3	00	71	" 16 "	" 23 "
Subdivisions	" " "	"	" " "	19	03	21	" 17 "	" 26 "
South Bdy.	Oscar McClellan	280	June 7, 1900	4	79	10	July 1, 1900	July 4, 1900
East "	Shannon & Gilcrest	253	Feb. 21, 1893	3	00	00	" 11, 1893	" 11, 1893

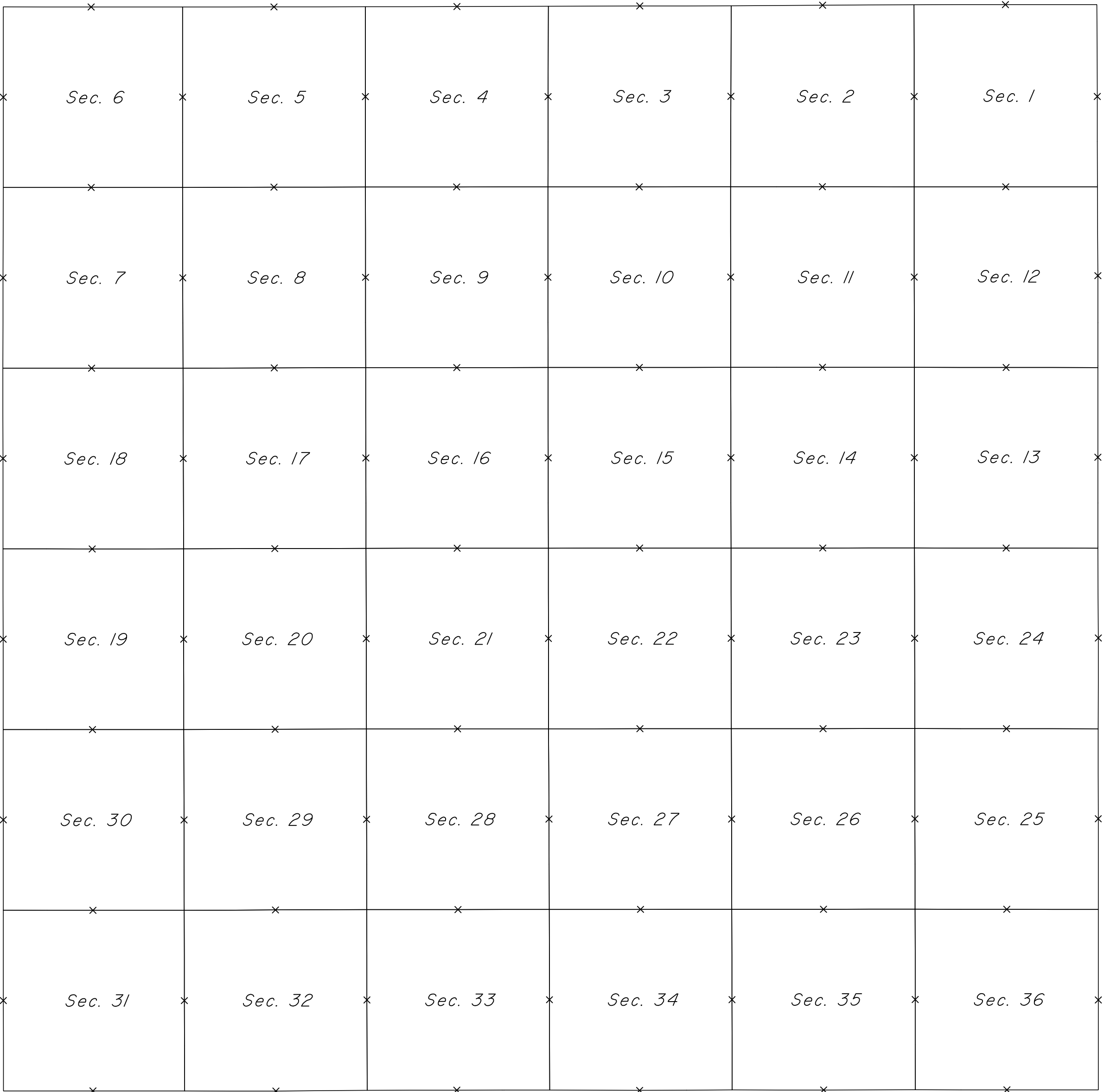
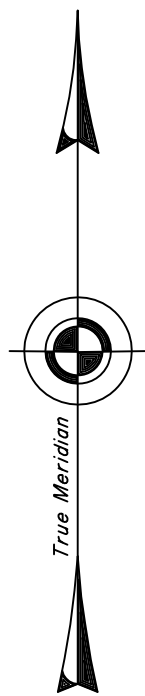
The above map of Township No. 34 North Range No. 114 West of the Sixth Principal Meridian Wyoming is strictly conformable to the field notes of the survey thereof on file in this office, which have been examined and approved.

U.S. Surveyor General's Office,
Cheyenne, Wyoming November 5, 1919

Charles J. Decker
Surveyor General.

TOWNSHIP 34 NORTH, RANGE 114 WEST OF THE SIXTH PRINCIPAL MERIDIAN, WYOMING.

INDEX TO CORNER REMONUMENTATION WITHOUT SURVEY



NOT TO SCALE

LEGEND

Remonumented Corner as Indicated