

## T. 35 N., R. 109 W., Sixth Principal Meridian, Wyoming, Field Note Links

Plat Accession Number(s)	Year(s) of Survey	
Township Subdivision Plats		
8788; 8789	2018	See plat for field notes
7575	1978	<a href="https://www.wy.blm.gov/cadastral/countyplats/sublette/fieldnotes/t35nr109w_gp397fn.pdf">https://www.wy.blm.gov/cadastral/countyplats/sublette/fieldnotes/t35nr109w_gp397fn.pdf</a>
-	1962; 1969	<a href="https://www.wy.blm.gov/cadastral/countyplats/sublette/fieldnotes/t35nr109w_gp262fn.pdf">https://www.wy.blm.gov/cadastral/countyplats/sublette/fieldnotes/t35nr109w_gp262fn.pdf</a>
4756	1896	<a href="https://www.wy.blm.gov/cadastral/countyplats/sublette/fieldnotes/t35nr109w_c263fn.pdf">https://www.wy.blm.gov/cadastral/countyplats/sublette/fieldnotes/t35nr109w_c263fn.pdf</a>
Township Exterior Plats		
4689	1896	<a href="https://www.wy.blm.gov/cadastral/countyplats/sublette/fieldnotes/ext2766.pdf">https://www.wy.blm.gov/cadastral/countyplats/sublette/fieldnotes/ext2766.pdf</a>

TOWNSHIP 35 NORTH, RANGE 109 WEST, OF THE SIXTH PRINCIPAL MERIDIAN, WYOMING.  
CORRECTIVE DEPENDENT RESURVEY

Beginning at the 1/4 sec. cor. of secs. 2 and 35, on the S. bdy. of the Tp., monumented with an aluminum post, 2½ ins. diam., firmly set, projecting 5 ins. above ground, with a mound of stone, 4 ft. base, 24 ins. high, N. of the cor., with aluminum cap mkd.

T35N R109W  
S 35  
1/4 —  
S 2  
T34N  
1978

Cor. is located 10 lks. E. of a 3 strand barbed wire and 1 strand smooth wire fence, extending N. and S., on a steep, boulder covered, west facing slope.

N. 0° 03' E., on the N. and S. center line of sec. 35.

12.32 A witness point on the N. and S. center line of sec. 35, monumented with an aluminum post, 2½ ins. diam., firmly set, projecting 9 ins. above ground, in a mound of stone, 4 ft. base, to top, with aluminum cap mkd.

T35N R109W  
C  
WP | S 35  
C  
1978

Cor. is located under a 3 rail wooden fence, extending N. and S.

N. 0° 03' E., beginning new measurement.

1.89 A witness point on the N. and S. center line of sec. 35, monumented by person(s) unknown, with an aluminum rod, 1 in. diam., firmly set, projecting 7 ins. above ground, in a collar of stone, with aluminum cap mkd.

U.S. DEPT. OF AGRICULTURE  
LINE  
MARKER  
1980  
CADASTRAL SURVEY  
FOREST SERVICE

This is accepted as a careful and faithful perpetuation of the 1978 Record cor. position. Not remonumented.

Cor. is located under a 3 rail wooden fence, extending N. and S.

N. 0° 03' E., beginning new measurement.

17.21 A witness point on the N. and S. center line of sec. 35, monumented with an aluminum post, 2½ ins. diam., firmly set, projecting 2 ins. above ground, with a steel fence post set nearby and a mound of stone, 4 ft. base, 24 ins. high, W. of the cor., with aluminum cap mkd.

T35N R109W  
C  
WP | S 35  
C  
1978

Cor. is located in a 3 strand barbed wire fence, extending N. and S.

N. 0° 02' E., beginning new measurement.

48.31 The 1/4 sec. cor. of secs. 26 and 35, monumented with an aluminum post, 2½ ins. diam., firmly set, projecting 2 ins. above ground, with a mound of stone, 3 ft. base, 5 ins. high, N. of the cor. with aluminum cap mkd.

T35N R109W  
S 26  
1/4 —  
S 35  
1978

Cor. is located 1/2 link E. of a barbed wire fence, 3 strand barbed wire and 1 strand smooth wire, extending N. and S.; and 18 lks. E. of an improved dirt road, 12 ft. wide, extending N. and S.

From this point, BLM GPS control point 3074, bears N. 4° 21' E., 4.19 chs. dist., monumented with a FENO® monument, a steel rod, 24 ins. long, 5/8 in. diam., set flush with the surface of the ground, with aluminum cap mkd. D.O.I. B.L.M. 3074 · 2018 CADASTRAL SURVEY.

## TOWNSHIP 35 NORTH, RANGE 109 WEST, OF THE SIXTH PRINCIPAL MERIDIAN, WYOMING.

## CORRECTIVE DEPENDENT RESURVEY

## SURVEY INFORMATION AND CERTIFICATE

This plat in two sheets represents the entire record of the corrective dependent resurvey of the subdivision of section 35, Township 35 North, Range 109 West, Sixth Principal Meridian, Wyoming.

The history of surveys pertaining to this corrective dependent resurvey is as follows:

William M. Gilcrest and John E. Shannon, U.S. Deputy Surveyors, surveyed the south boundary in 1893.

Benjamin A. Hart, U.S. Deputy Surveyor, surveyed the subdivision lines and meandered Soda Lake in 1896. Hart retraced the south boundary in 1898.

Jerry L. Messick, Cadastral Surveyor, subdivided section 35 in 1978.

Lottings and areas are as shown on the plat approved November 28, 1900.

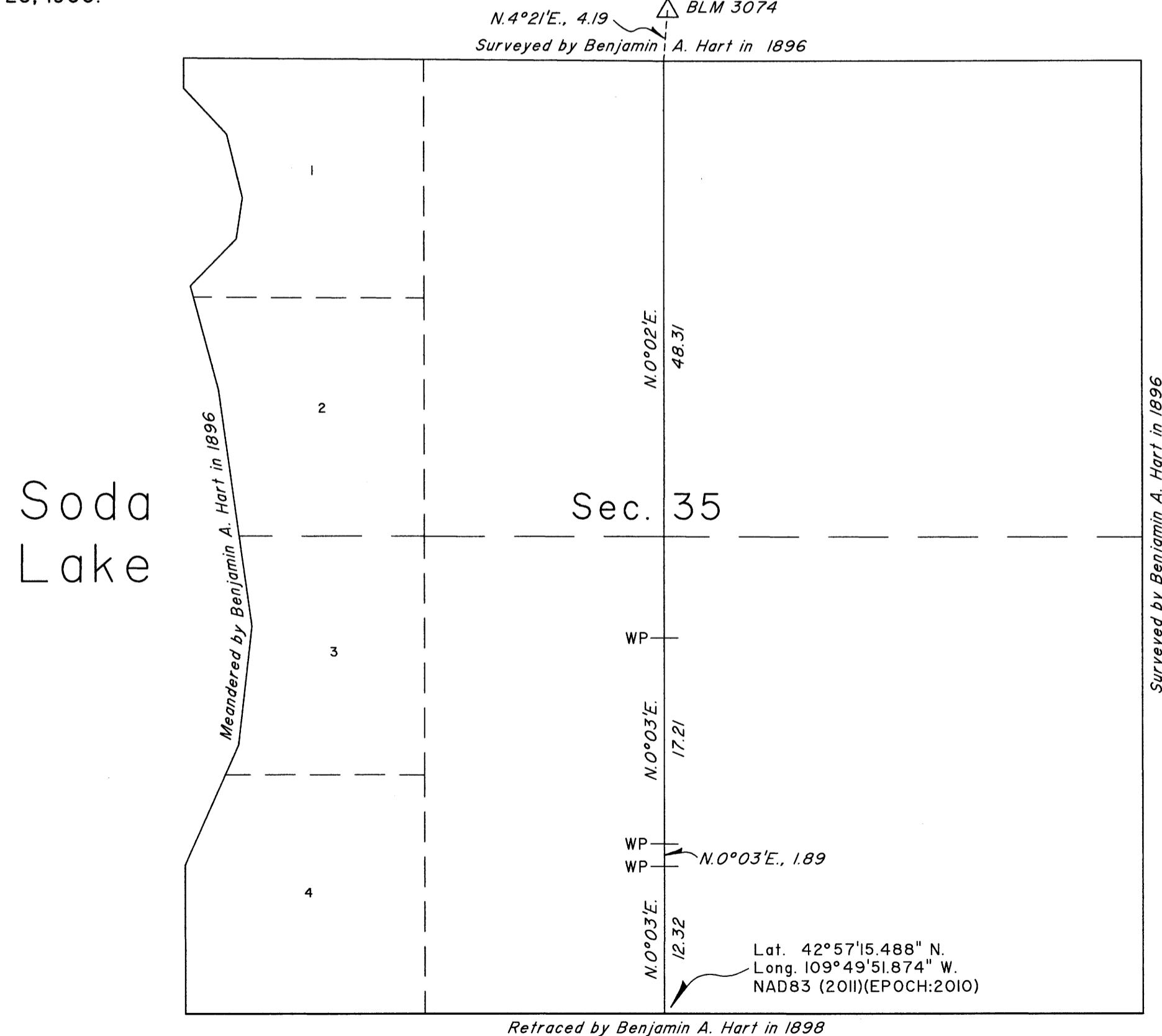
The survey was executed with Trimble Model R8M3 Global Positioning System/Global Navigation Satellite Systems (GPS/GNSS) receivers. Cadastral project control and corner measurements determined during the GPS/GNSS survey achieve the accuracy standards stated in "Standards for the Positional Accuracy of Cadastral Surveys When Using Global Navigation Satellite Systems (GNSS)", dated February 23, 2009. The directions of all lines refer to the true meridian and are reported as mean bearings. All reported positions are referenced to the NAD 83(2011)(EPOCH:2010) datum. The National Geodetic Survey Positioning User Service (OPUS) was used to determine the following GPS/GNSS control point:

Name	Latitude	Longitude	HAE
3074	42° 58' 10.165" N.	109° 49' 51.547" W.	7539.30 sft.

Documentation of the determined position is included in the group file.

BLM 3074

N.4°21'E., 4.19  
Surveyed by Benjamin A. Hart in 1896



In an email to the Chief Cadastral Surveyor, Wyoming, dated July 11, 2018, Darby Schock, Wyoming Professional Land Surveyor No. 15432, Wyoming Game and Fish Department, detailed a significant discrepancy with the official 1978 record of survey. This discrepancy specifically exists in the official record distance to the southernmost witness point on the north and south center line of section 35.

Mr. Schock's survey is depicted on "Record of Survey, Soda Lake WHMA, Boundary Survey", Drawing No. 02.41.02, Wyoming Game & Fish Dept., Conservation Engineering Branch, Cheyenne, Wyoming 82006. Pertinent portions of Mr. Schock's survey detailing the discrepancy are also depicted on State of Wyoming Corner Record No. 394159, filed at the Sublette County County Office of the Clerk and Recorder in Pinedale, Wyoming.

A subsequent field investigation verified Mr. Schock's findings and the corrective dependent resurvey shown hereon, in two sheets, corrects the 1978 dependent resurvey. The field data and recommendation for a corrective dependent resurvey are documented in an email to the Chief Cadastral Surveyor, Wyoming dated March 12, 2020. Mr. Schock's email, drawing and pertinent corner records are included in the file for Group No. 1001, Wyoming.

I, Olían T. Shockley, Cadastral Surveyor, HEREBY CERTIFY upon honor that, in pursuance of special instructions dated July 19, 2018, and assignment instructions dated July 19, 2018, for Group Number 1001, Wyoming, I have conducted a corrective dependent resurvey of the subdivision of section 35, Township 35 North, Range 109 West, Sixth Principal Meridian, Wyoming, and that this plat in two sheets represents the entire record of this survey. Survey commenced September 5, 2018, and completed October 4, 2018, and has been made in strict conformity with the special instructions, the Manual of Instructions for the Survey of the Public Lands of the United States, 2009, and in specific manner described hereon.

*Olían T. Shockley*  
Olían T. Shockley  
Cadastral Surveyor

August 26, 2020  
Date

UNITED STATES DEPARTMENT OF THE INTERIOR  
BUREAU OF LAND MANAGEMENT

Cheyenne, Wyoming

August 26, 2020

This plat representing the entire record of this survey, having been correctly executed in accordance with the requirements of law and the regulations of this Bureau, is hereby accepted.

For the Director

*Sonja S. Sparks*

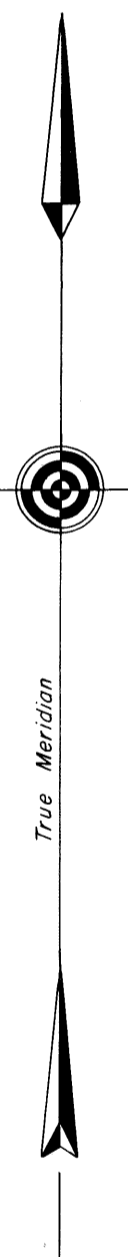
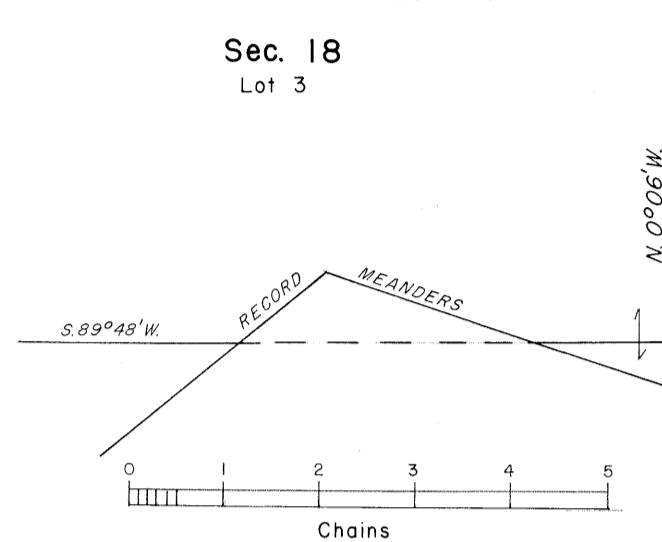
Sonja S. Sparks,  
Chief Cadastral Surveyor for Wyoming

7575-2828A

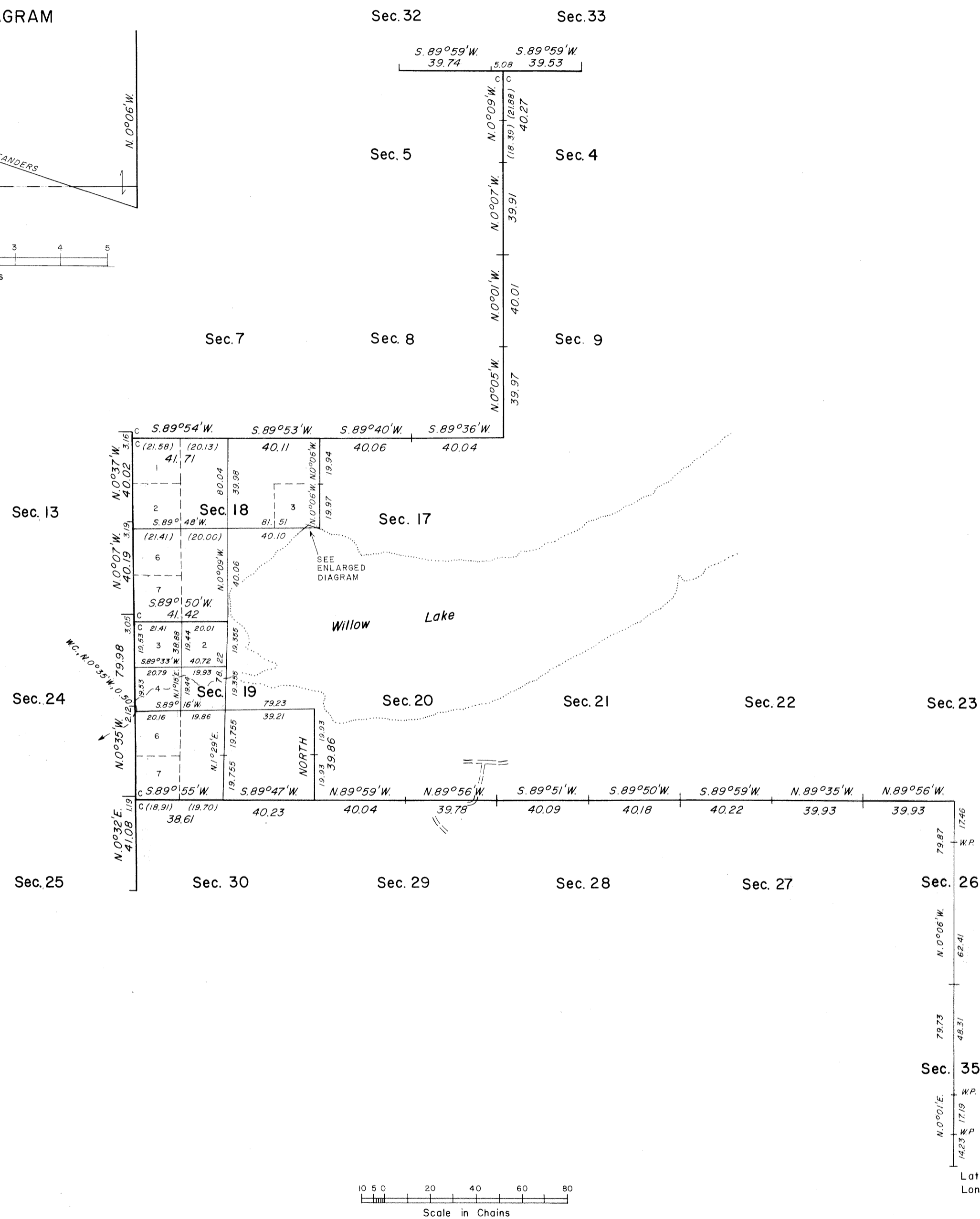
ORIGINAL

TOWNSHIP 35 NORTH, RANGE 109 WEST, OF THE SIXTH PRINCIPAL MERIDIAN, WYOMING.  
DEPENDENT RESURVEY AND SUBDIVISION OF SECTIONS

## ENLARGED DIAGRAM

Sec. 18  
Lot 3

Mean Magnetic Declination  
15 1/2° E.



A history of surveys is contained in the field notes.

This plat represents the dependent resurvey of a portion of the west and north boundaries and a portion of the subdivisional lines designed to restore the corners in their true original locations according to the best available evidence, and the subdivision of sections 18, 19, 26 and 35, T. 35 N., R. 109 W., Sixth Principal Meridian, Wyoming.

The lottings and areas are as shown on the plat approved November 28, 1900.

Survey executed by Jerry L. Messick, Cadastral Surveyor, beginning July 3, 1978, and completed July 20, 1978, pursuant to Special Instructions dated April 15, 1977, for Group No. 397, Wyoming.

UNITED STATES DEPARTMENT OF THE INTERIOR  
BUREAU OF LAND MANAGEMENT  
Denver, Colorado August 28, 1981

This plat is strictly conformable to the approved field notes, and the survey, having been correctly executed in accordance with the requirements of law and the regulations of this Bureau, is hereby accepted.

For the Director

*Gerald F. Pittman*  
Acting Chief, Cadastral Survey  
Examination and Approval Staff

Lat. 42° 57' 16" N.  
Long. 109° 49' 49" W.

4756

*G*      *f*      *F*      *e*      *E*      *d*      *D*      *c*      *C*      *b*      *B*      *a*      *A*



The above Map of Township N. 35 North of Range N. 109 West of the 6th Principal Meridian, Wyoming, is strictly conformable to the field notes of the survey thereof on file in this Office, which have been examined and approved.

Surveyor General's Office. *Alpheus P. Hanson*  
Cheyenne, Wyoming, November 28<sup>th</sup>, 1900. *Sir: Genl!*

Alpheus P. Hanson  
Sur. Gen!

Filed JAN 14 1901  
See Comr's letter E Jan'y 10. 1901.

35-109

TOWNSHIP 35 NORTH, RANGE 109 WEST OF THE SIXTH PRINCIPAL MERIDIAN, WYOMING.

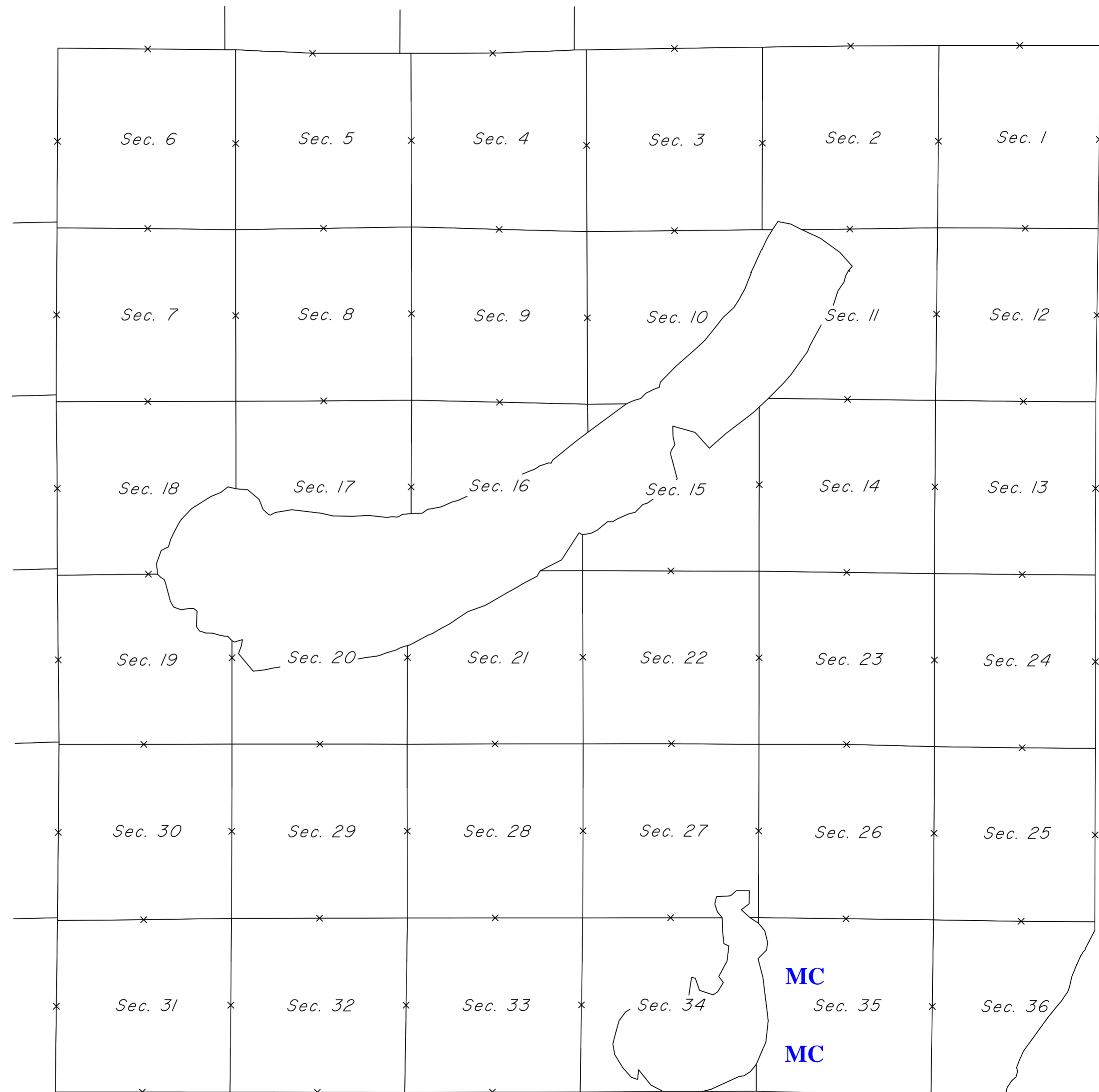
# INDEX TO CORNER REMONUMENTATION WITHOUT SURVEY



NOT TO SCALE

LEGEND

Remonumented Corner as Indicated



4689

## TOWNSHIP EXTERIORS

FOURTEENTH GUIDE MERIDIAN WEST

NINTH STANDARD | 887 PARALLEL NORTH

R. 109 W  
R. 108 W

T. 36 N.  
R. 112 W.

T. 36N.  
R. 111W.

T. 36 N.  
R. 110 W.

T.36N.  
R.109W.

T. 35N.  
R. 112W.

T.35N.  
R.111W.

T.35N.  
R.110W.

T.35N.  
R.109W.

T. 34 N.  
R. 112 W.

T.34N.  
R.111W.

T. 34 N.  
R. 110 W.

T. 34 N.  
R. 109 W.

T.33N.  
R.112W.

T.33N  
R.111W

T.33N.  
R.110W.

T.33N.  
R.109W.

Latitude 43° 02' N.  
 Longitude 109° 47' W.  
 Mean Mag. Decl. 17° 39' E.

*This Plat of The Thirteenth Auxiliary Meridian West through Townships 35 and 36 North, and The North Boundary of Township 35 North of Range 109 West of*

*The Sixth Principal Meridian,  
Wyoming  
is strictly conformable to the field  
notes of the survey thereof by  
Benjamin A. Hart, U.S. Deputy Survr.  
under his Contract N<sup>o</sup> 263,  
dated May 23, 1896,  
which have been examined, approved  
and filed in this office.*

U.S. Surveyor General's Office  
Cheyenne, Wyoming  
Sept. 16<sup>th</sup> 1898

Alpheus C. Hanson  
U.S. Sur<sup>v</sup> Gen?

13<sup>TH</sup> AUXILIARY MERIDIAN WEST

EIGHTH STANDARD PARALLEL NORTH

Scale: 1 inch = 160 chains

Table of Mileage		
<i>Lines Designated</i>	<i>Amount</i>	<i>When Surveyed</i>
<i>Standard Lines</i>	M <sup>32</sup> C <sup>4 1/2</sup> L <sup>5 1/2</sup>	August 1822, 1896
<i>Township Lines</i>	5 75 95	" 17-18, "
<i>Connecting Lines</i>	3 37	" 22, "

I.B.M.

Approved by Comm. letter June 10, 1899.  
" " " April 15, 1901.  
F.H.A.