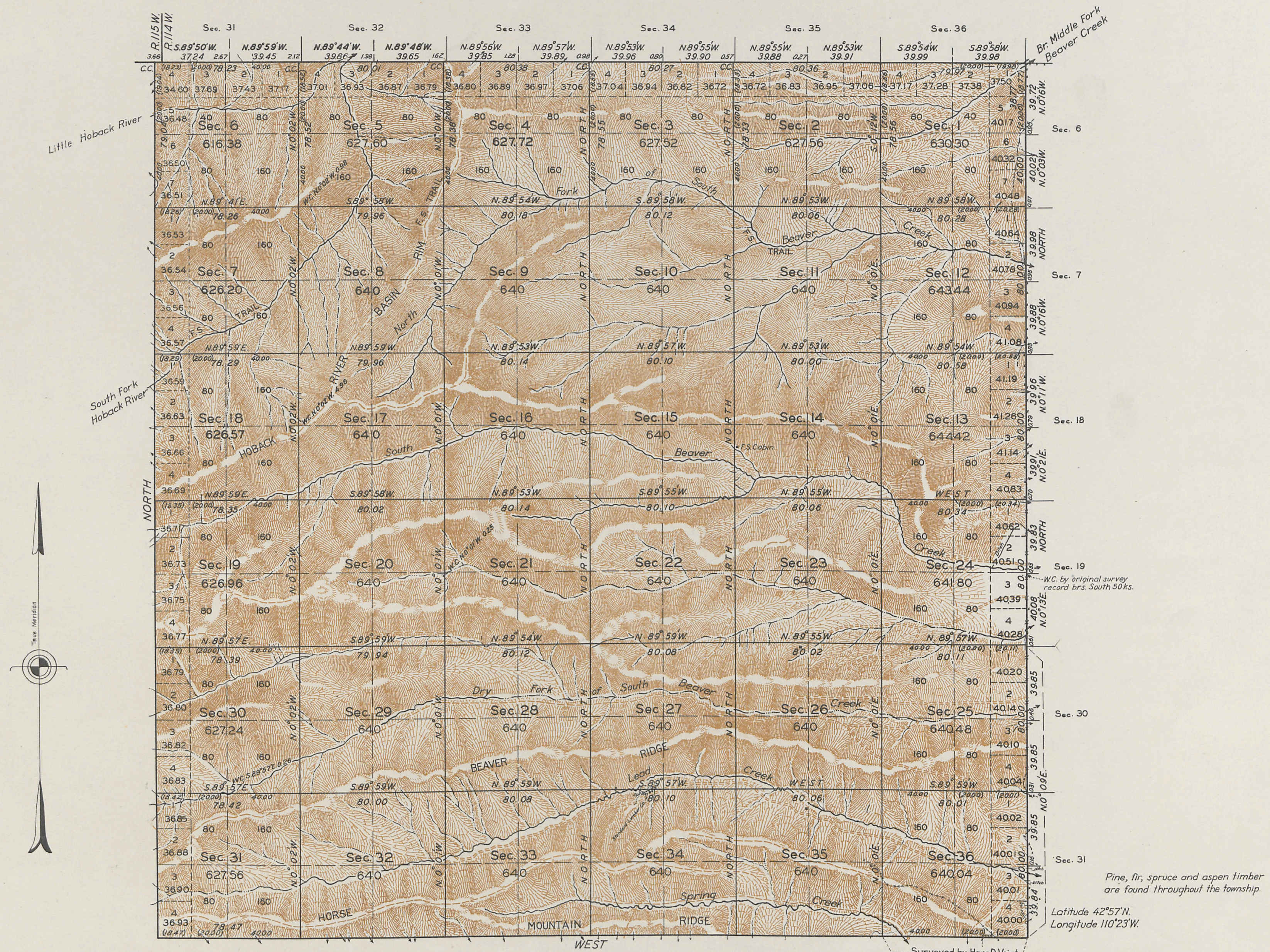


T. 35 N., R. 114 W., Sixth Principal Meridian, Wyoming, Field Note Links

Plat Accession Number(s)	Year(s) of Survey	Township Subdivision Plats
6085	1931	https://www.wy.blm.gov/cadastral/countyplats/sublette/fieldnotes/t35nr114w_gp110fn.pdf

TOWNSHIP No 35 NORTH, RANGE No 114 WEST OF THE SIXTH PRINCIPAL MERIDIAN, WYOMING



Scale: 40 Chains to an Inch.

Area surveyed: 22,901.79 Acres.

LINES DESIGNATED	BY WHOM SURVEYED	GROUP		MILEAGE		WHEN SURVEYED	
		NO.	DATE	MLS.	CHS.	BEGUN	COMPLETED
EXTERIOR	Emil Voigt	110	March 17, 1930.	22	75.50	June 9, 1930	Sept. 8, 1931.
SUBDIVISIONAL	" "	" "	" "	59	66.61	July 4, 1931.	" "
CONNECTING	" "	" "	" "	" "	15.95	" "	" "
SOUTH BDY.	Hans D. Voigt	46	Feb. 4, 1918.	1	00.00	Aug. 23, 1918	Aug. 23, 1918.

Office of U.S. Supervisor of Surveys

Denver, Colorado, January 22, 1936.

The above plot of Township No. 35 North, Range No. 114 West of the Sixth Principal Meridian, Wyoming, is strictly conformable to the field notes of the survey thereof which have been examined and approved

Wm. H. Johnson
U.S. Supervisor of Surveys

DEPARTMENT OF THE INTERIOR

GENERAL LAND OFFICE

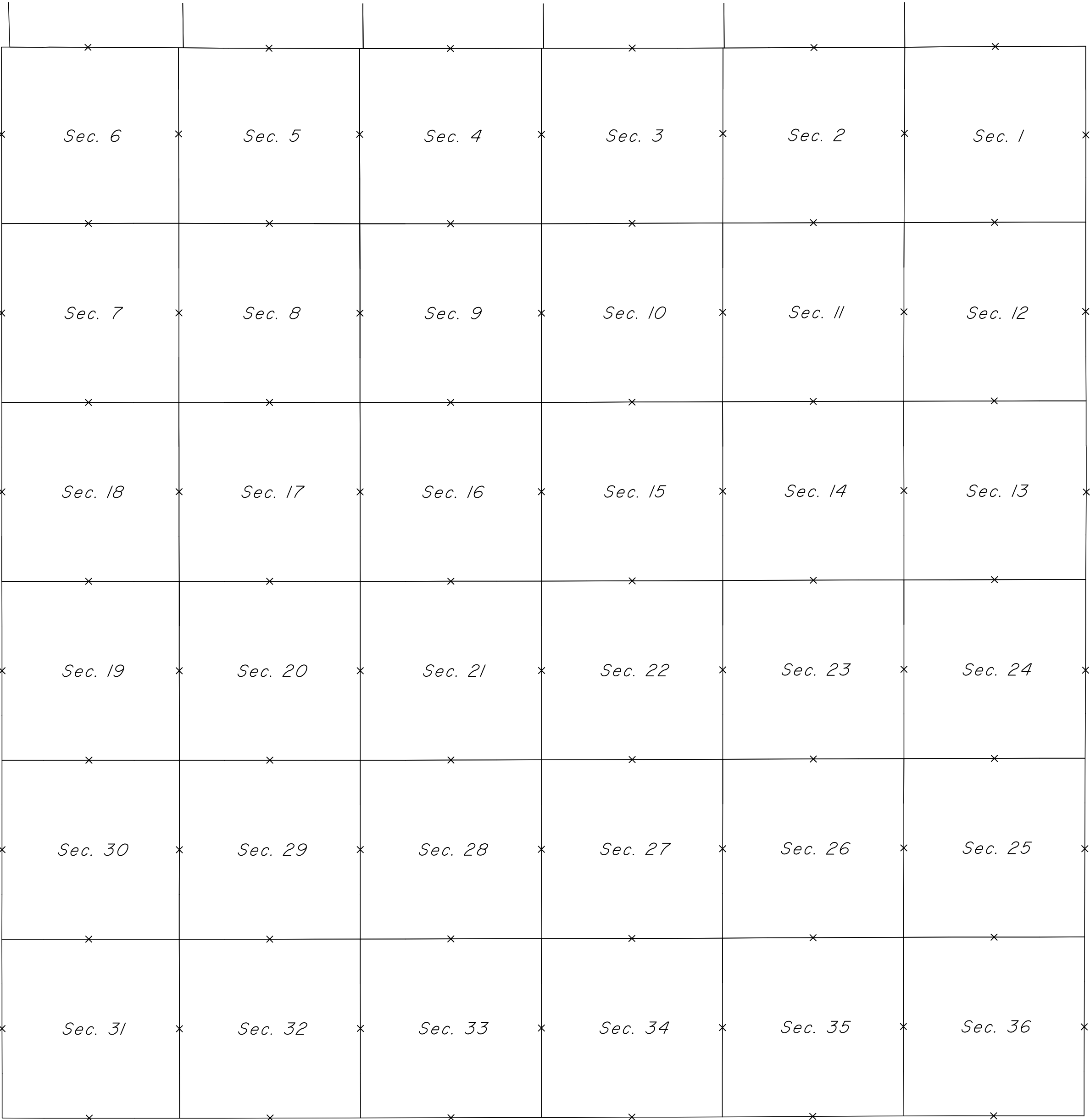
Washington, D.C., April 9, 1936.

The survey represented by this plat having been correctly executed in accordance with the requirements of law and the regulations of this office, is hereby accepted.

Antoinette F. Hump
Assistant Commissioner

TOWNSHIP 35 NORTH, RANGE 114 WEST OF THE SIXTH PRINCIPAL MERIDIAN, WYOMING.

INDEX TO CORNER REMONUMENTATION WITHOUT SURVEY



NOT TO SCALE

LEGEND

Remonumented Corner as Indicated