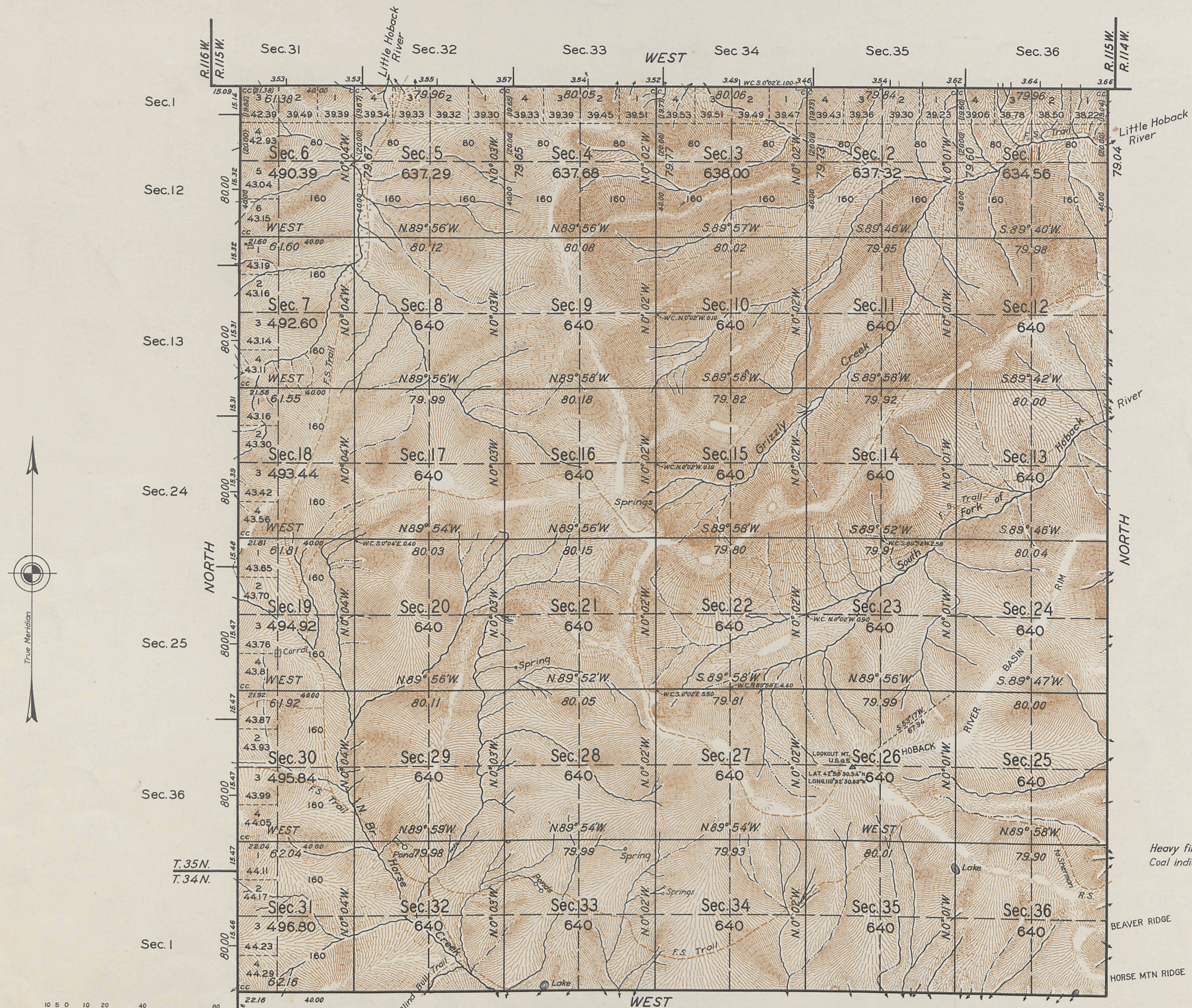


T. 35 N., R. 115 W., Sixth Principal Meridian, Wyoming, Field Note Links

Plat Accession Number(s)	Year(s) of Survey	Township Subdivision Plats
6084	1934	https://www.wy.blm.gov/cadastral/countyplats/sublette/fieldnotes/t35nr115w_gp110fn.pdf

TOWNSHIP N° 35 NORTH, RANGE N° 115 WEST OF THE SIXTH PRINCIPAL MERIDIAN, WYOMING



Heavy fir, pine and spruce timber in east half of township.
Coal indications in southwestern part of township.

SCALE: 40 CHAINS TO AN INCH

TOTAL AREA SURVEYED 22,148.64 ACRES

LINES DESIGNATED	BY WHOM SURVEYED	GROUP	DATE	MILEAGE	WHEN SURVEYED	
					BEGUN	COMPLETED
EAST BOUNDARY	Emil Voigt	110	March 17, 1930	5 79.04	July 4, 1931	September 8, 1931
SOUTH BOUNDARY	Leo M. Petersen	"	"	5 62.16	June 2, 1933	August 19, 1933
WEST BOUNDARY	Anthony C. Kimmell	"	"	5 64.54	"	"
NORTH BOUNDARY	Anthony C. Kimmell	"	"	5 61.25	June 18, 1934	August 22, 1934
SUBDIVISIONAL	Thomas P. Turchan	"	"	58 67.00	"	"
CONNECTING	Frank O. Blair	"	"	2 63.55	"	"

Office of U.S. Supervisor of Surveys
Denver, Colorado, January 22, 1936.
The above plat of Township No. 35 North, Range No. 115 West of the Sixth Principal Meridian, Wyoming, is strictly conformable to the field notes of the survey thereof which have been examined and approved.

Wm. H. Johnson
U.S. Supervisor of Surveys.

DEPARTMENT OF THE INTERIOR
GENERAL LAND OFFICE
Washington, D.C., April 9, 1936.
The survey represented by this plat having been correctly executed in accordance with the requirements of law and the regulations of this office, is hereby accepted.

Antoinette F. Smith
Assistant Commissioner.