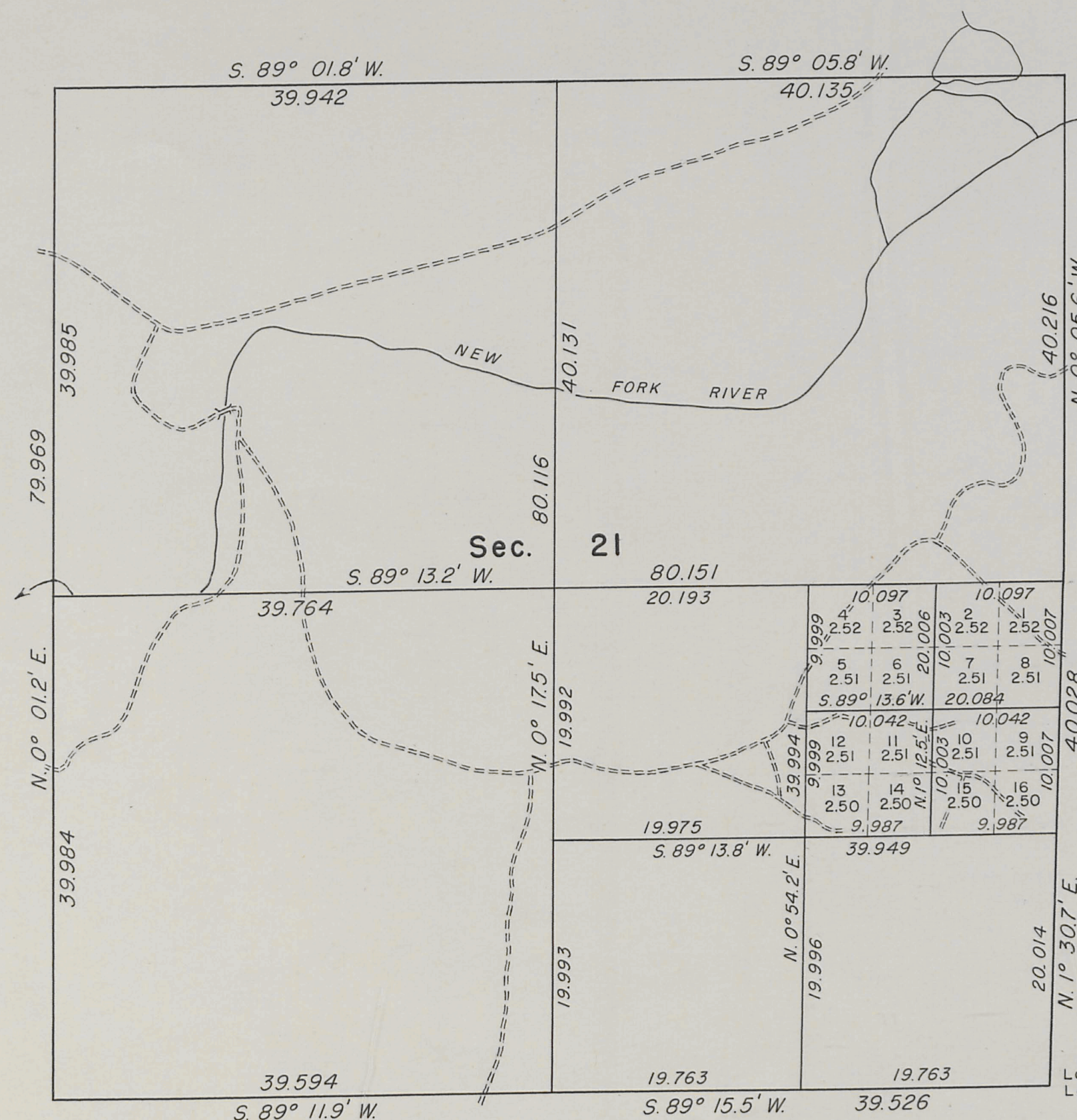


T. 36 N., R. 110 W., Sixth Principal Meridian, Wyoming, Field Note Links

Plat Accession Number(s)	Year(s) of Survey	
Township Subdivision Plats		
-	1969	https://www.wy.blm.gov/cadastral/countyplats/sublette/fieldnotes/t36nr110w_gp262fn.pdf
6877	1960	https://www.wy.blm.gov/cadastral/countyplats/sublette/fieldnotes/t36nr110w_gp266fn_s21.pdf
4653	1893	https://www.wy.blm.gov/cadastral/countyplats/sublette/fieldnotes/t36nr110w_c253fn.pdf
Township Exterior Plats		
4647	1893	https://www.wy.blm.gov/cadastral/countyplats/sublette/fieldnotes/ext2732.pdf

True Meridian

Magnetic Declination $16 \frac{10}{2}^{\circ}$ E.



As shown hereon a resurvey of the boundaries and the survey of a portion of the subdivisional lines of Section 21, Township 36 North, Range 110 West, of the Sixth Principal Meridian, Wyoming, was executed by Jack A. Eaves from June 13 to June 22, 1960, under Special Instructions dated June 10, 1960, for Group 266, Wyoming.

Latitude 43° 04.2' N.
Longitude 109° 58.6' W.

UNITED STATES DEPARTMENT OF THE INTERIOR
BUREAU OF LAND MANAGEMENT
Washington, D.C. October 25, 1961

This plat is strictly conformable to the approved field notes, and the survey, having been correctly executed in accordance with the requirements of law and the regulations of this Bureau, is hereby accepted.

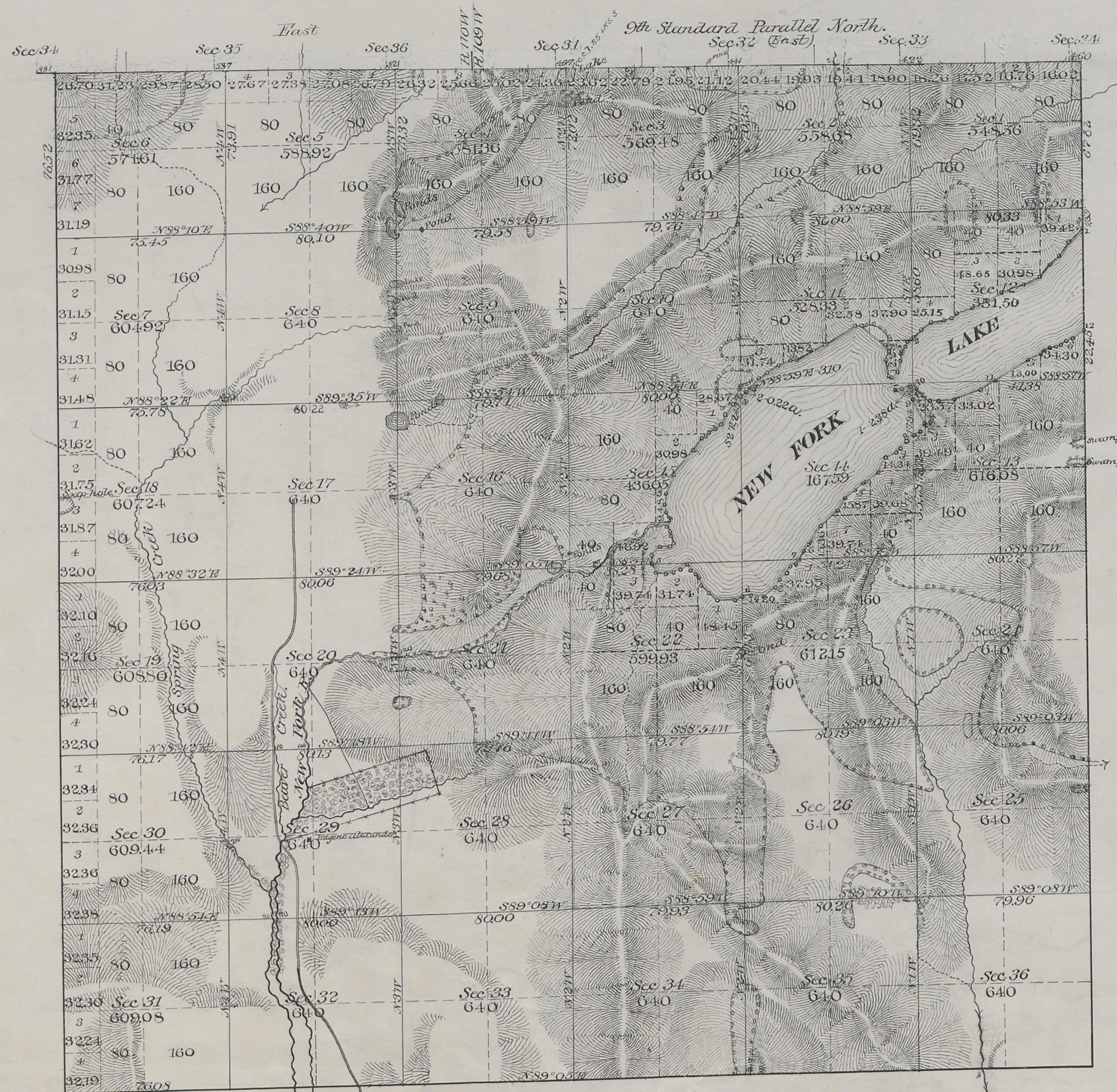
For the Director

E. E. Huntington
Chief, Division of Engineering

M.L.L.

orig

Township No 36 North, Range No 110 West of the 6th Principal Meridian.



NW cor. Sec. 34 not
possibly located
Lat. 43° 03' 18.5" N
Long. 109° 59' 42.5" W
Paid U.S.F.S. 1923
cord

Measurements at Intermediate Rates
Minimum " 6 " 34 " 24 "
Connections at Intermediate Rates
Minimum " 0 " 10 " 58 "

Subdivisions at Intermediate Rates 30 mi. 22 chs. 27 lks
Minimum " 25 " 16 " 19 " Total number of Acres 21,259.72

Surveys Designated	By Whom Surveyed	Date of Contract	Amount of Survey	Date of Survey	Magnetic Declination
Subdivisions	Shawano & Gilchrist	Feb 21, 1893	55 40 46	June 16-24, 1893	17° 50' East.
Meanders	"	"	7 43 87	" 24-27, "	17° 56' "
Connections	"	"	23 88		

The above Map of Township No 36 North, Range No 110 West of the 6th Principal Meridian Wyoming is strictly conformable to the field notes of the survey thereof on file in this Office which have been examined and approved.

Surveyor General's Office
Cheyenne Wyo. June 25 1894

Rory Bickford

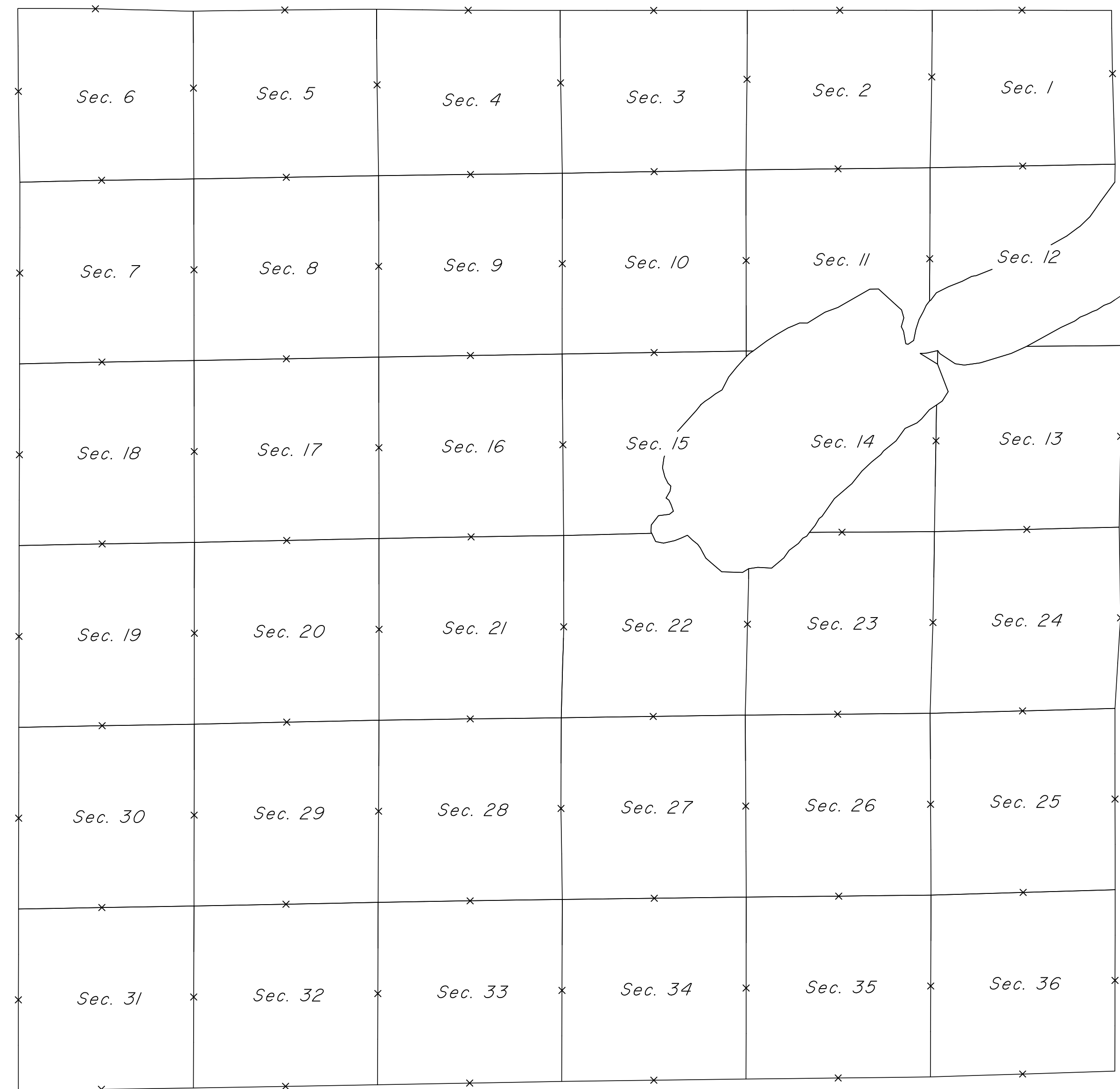
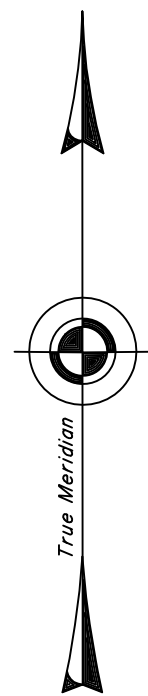
2788

36-110

TOWNSHIP 36 NORTH, RANGE 110 WEST OF THE SIXTH PRINCIPAL MERIDIAN, WYOMING.

INDEX TO CORNER REMONUMENTATION WITHOUT SURVEY

NINTH STANDARD PARALLEL NORTH



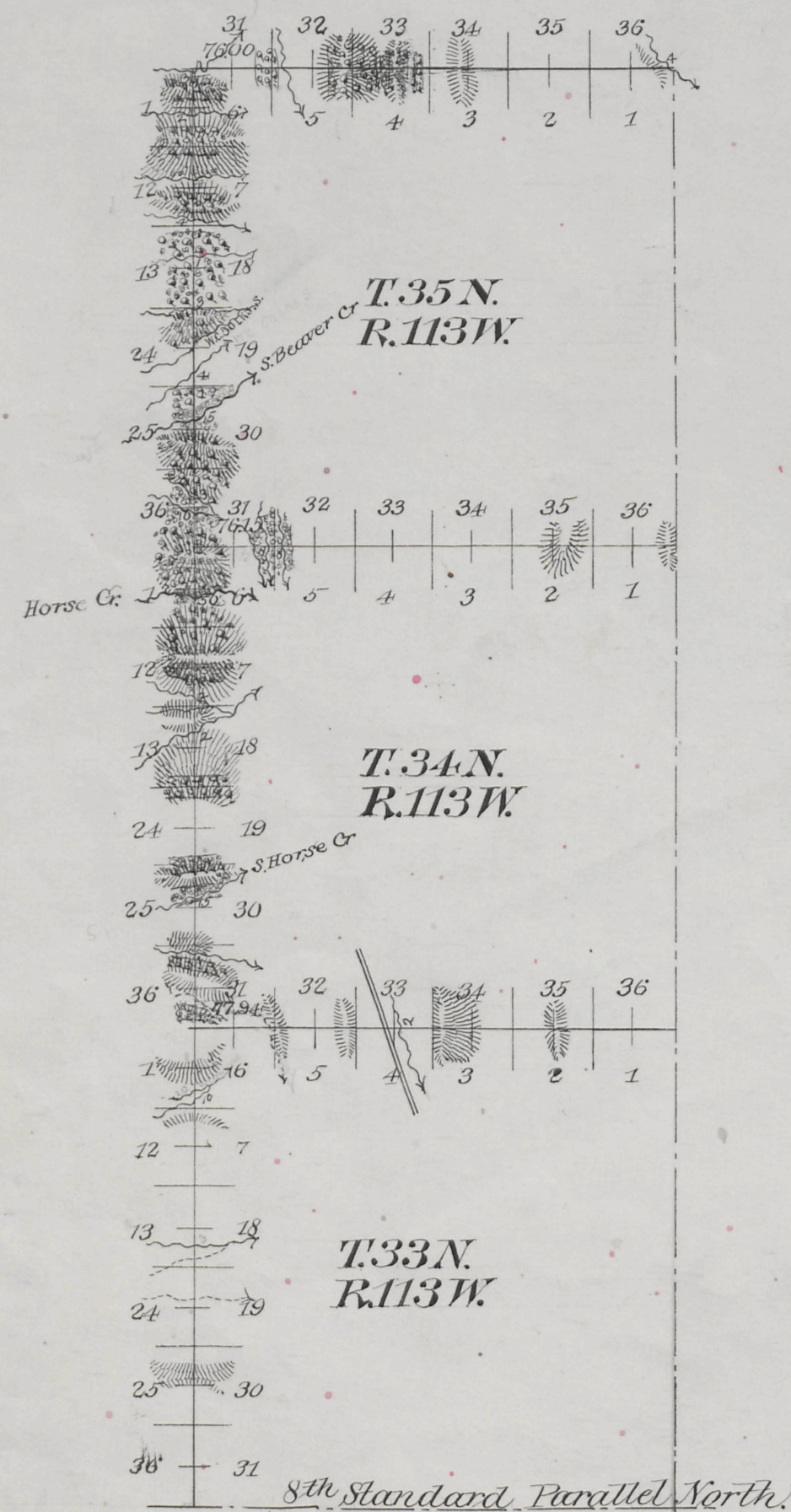
NOT TO SCALE

LEGEND

Remonumented Corner as Indicated

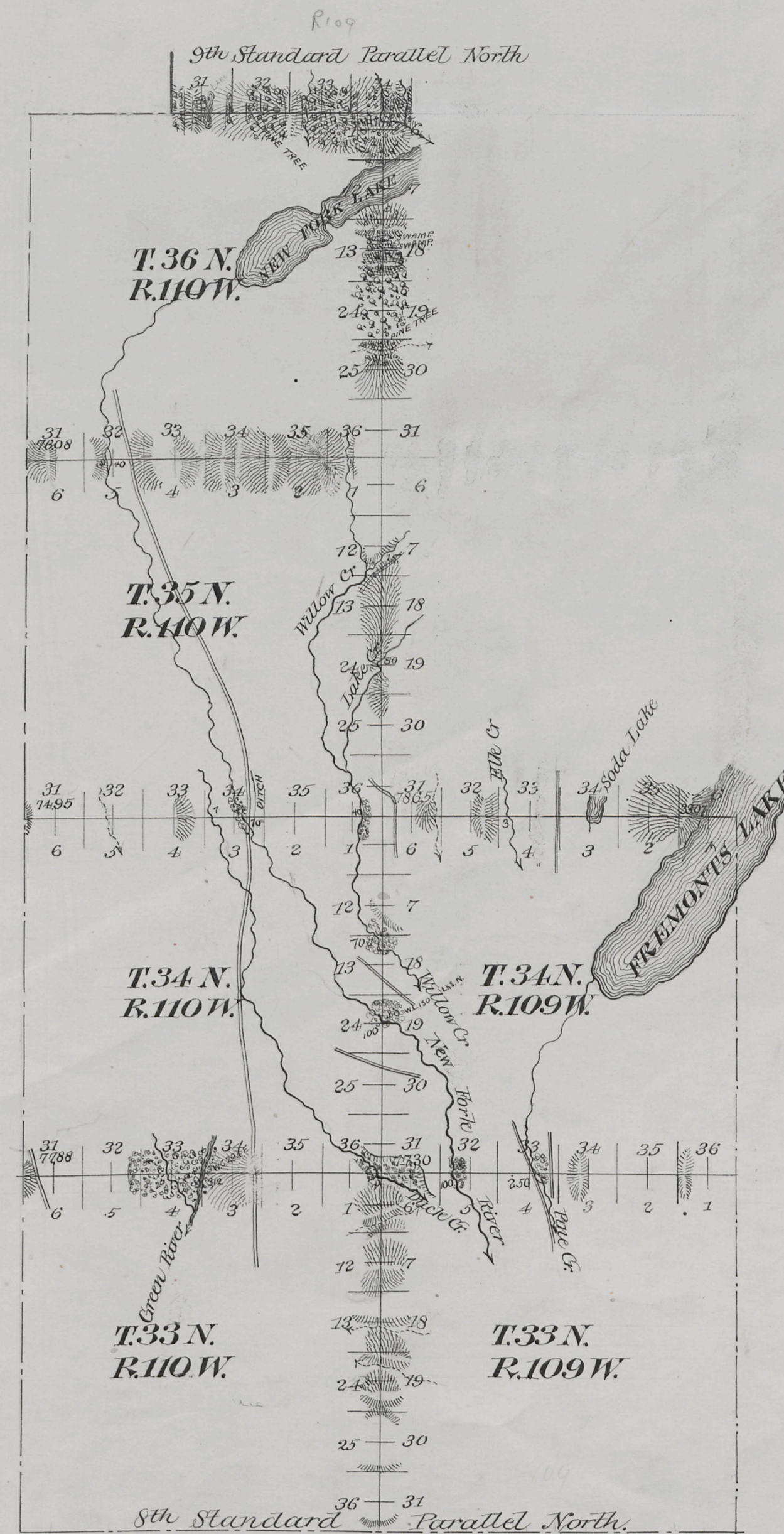
EXTERIOR LINES

Scale 1 inch = 2 Miles: Var. East.



Township Lines at intermediate rates	22	48	05
" " minimum	66	26	77
Standard " intermediate	4	00	00
Connections " "	0	04	60

Survey Designated	By Whom Surveyed	Date of Contract	Amount of Survey Ac Chs Lks	Date of Survey	Magnetic Declination
Standard Lines	Shannon & Gilcrest	Feb. 21 1893	4 00 00	June 14, 1893	18° 02' East
Exterior "	"	"	88 73 82	May 3-June 15, 1893 July 3-20 "	17° 30' 18" 07' East
Connections	"	"	0 4 60	June 15 1893	17° 50' East



The above diagram of the Exterior lines of Townships 33 and 34 North of Ranges 109 and 110 West; of Townships 35 and 36 North of Range 110 West; of Townships 33, 34 and 35 North of Range 113 West of the 6th Principal Meridian Wyoming is strictly conformable to the field notes of the survey thereof on file in this office, which have been examined and approved.

Surveyor General's Office
Cheyenne Wyo June 25 1894

Perry Bickford
Surveyor General