

## T. 37 N., R. 113 W., Sixth Principal Meridian, Wyoming, Field Note Links

Plat Accession Number(s)	Year(s) of Survey	
Township Subdivision Plats		
7373	1972	<a href="https://www.wy.blm.gov/cadastral/countyplats/sublette/fieldnotes/t37nr113w_gp347fn.pdf">https://www.wy.blm.gov/cadastral/countyplats/sublette/fieldnotes/t37nr113w_gp347fn.pdf</a>
4600	1893	<a href="https://www.wy.blm.gov/cadastral/countyplats/sublette/fieldnotes/t37nr113w_c252fn.pdf">https://www.wy.blm.gov/cadastral/countyplats/sublette/fieldnotes/t37nr113w_c252fn.pdf</a>
Township Exterior Plats		
4597	1893	<a href="https://www.wy.blm.gov/cadastral/countyplats/sublette/fieldnotes/ext2684.pdf">https://www.wy.blm.gov/cadastral/countyplats/sublette/fieldnotes/ext2684.pdf</a>
4455	1892	<a href="https://www.wy.blm.gov/cadastral/countyplats/sublette/fieldnotes/ext2588.pdf">https://www.wy.blm.gov/cadastral/countyplats/sublette/fieldnotes/ext2588.pdf</a>

TOWNSHIP 37 NORTH, RANGE 113 WEST, OF THE SIXTH PRINCIPAL MERIDIAN, WYOMING.  
DEPENDENT RESURVEY



A history of surveys is contained in the field notes.

This plat represents the dependent resurvey of a portion of the Ninth Standard Parallel North, through Range 113 West, a portion of the north boundary and a portion of the subdivisional lines, designed to restore the corners in their true original locations according to the best available evidence.

The east boundary (Fourteenth Guide Meridian West) was resurveyed concurrently under T. 37 N., R. 112 W., of this group.

Except as indicated hereon, the lottings and areas are as shown on the plat approved June 22, 1895.

Survey executed by Dennis D. Bland, Supervisory Cadastral Surveyor, beginning July 19, 1972, and completed September 22, 1972, pursuant to Special Instructions for Group No. 347, Wyoming, dated July 7, 1972.

UNITED STATES DEPARTMENT OF THE INTERIOR  
BUREAU OF LAND MANAGEMENT  
Washington, D.C. November 9, 1977

This plat is strictly conformable to the approved field notes, and the survey, having been correctly executed in accordance with the requirements of law and the regulations of this Bureau, is hereby accepted.

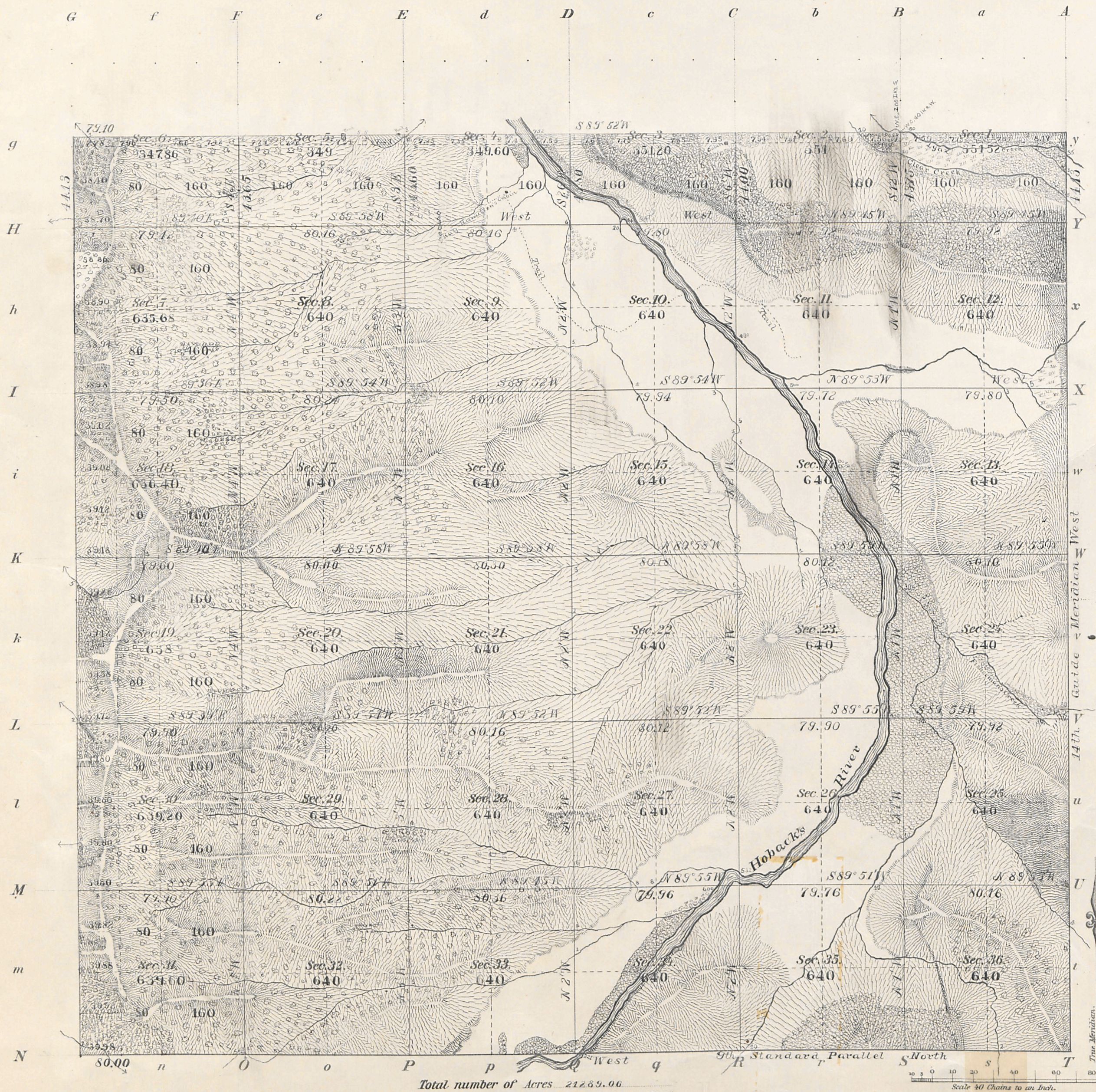
For the Director

*Bernard W. Fisher*  
Chief, Division of Cadastral Survey

Lat. 43°07'33" N.  
Long. 110°20'35" W



*Township N<sup>o</sup> 37 North, Range N<sup>o</sup> 113 West of the 6<sup>th</sup> Principal Meridian*

[illegible]

<i>Surveys Designated</i>	<i>By Whom Surveyed</i>	<i>Date of Contract</i>	<i>Amount of Surveys</i> <i>M. Ch.<sup>2</sup> Lk.<sup>3</sup></i>	<i>When Surveyed</i>	<i>Magnetic Declination</i>
<i>Township lines</i> <i>Subdivisions</i>	<i>Carpenter &amp; Warner</i>	<i>Jan'y 12-1893</i>	<i>57 58 34</i>	<i>June 19-26 1893</i>	<i>17° 42' East</i>

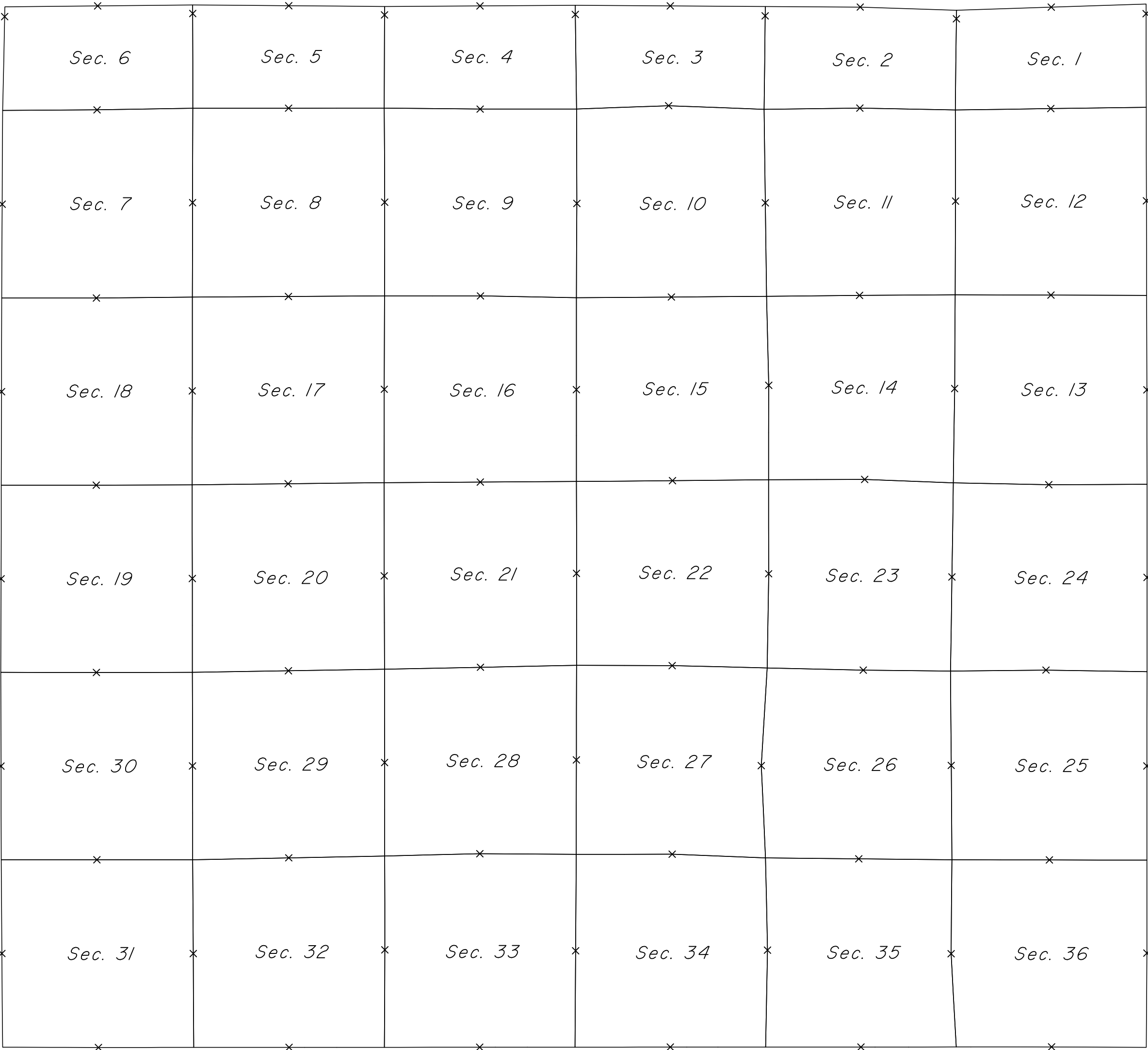
Surveyor General's Office.  
Cheyenne Wyoming  
June 22, 1895

Sur.<sup>t</sup> Gen.<sup>l</sup>



TOWNSHIP 37 NORTH, RANGE 113 WEST OF THE SIXTH PRINCIPAL MERIDIAN, WYOMING.

INDEX TO CORNER REMONUMENTATION WITHOUT SURVEY



NOT TO SCALE

NINTH STANDARD PARALLEL NORTH

LEGEND

Remonumented Corner as Indicated



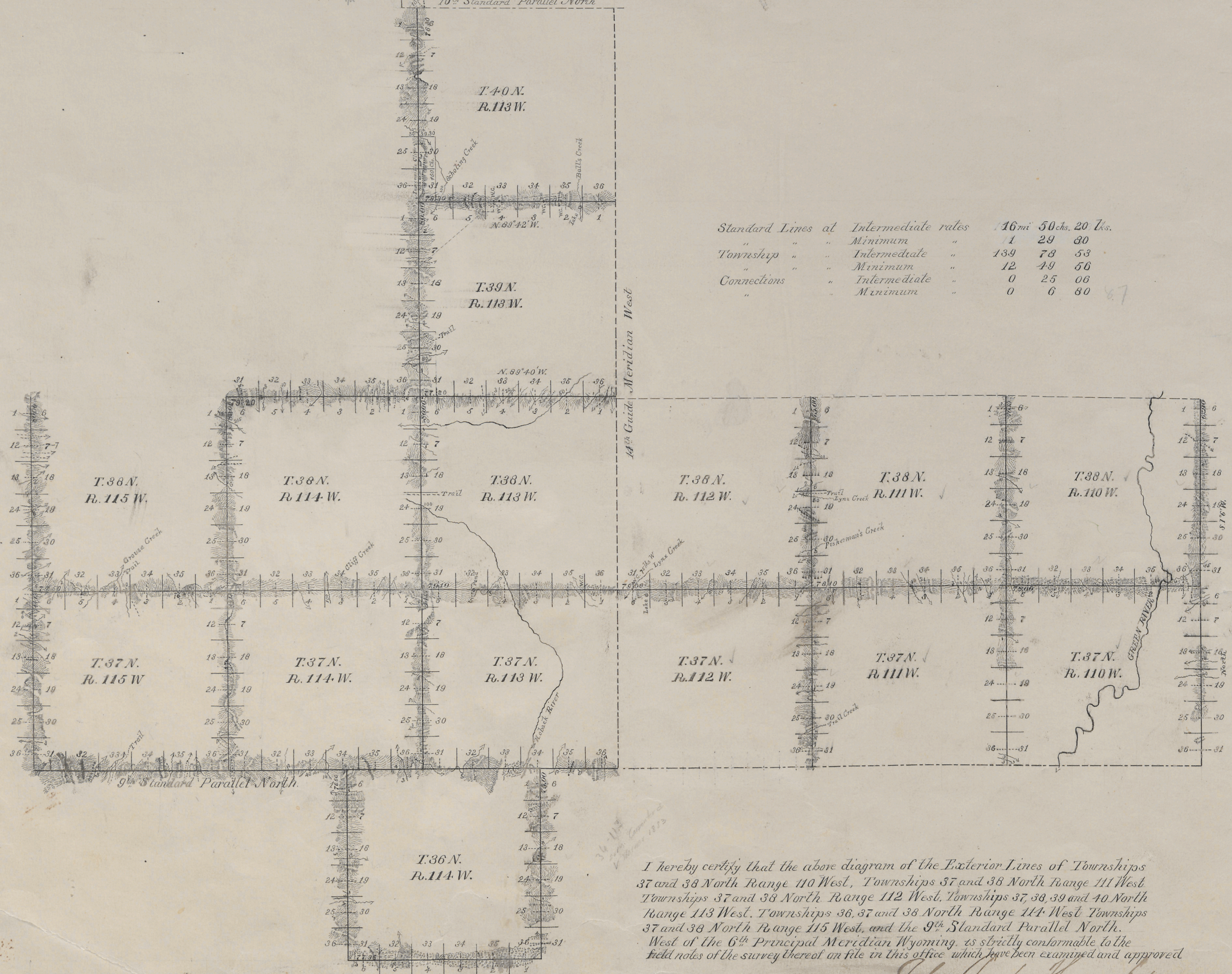
*Index*

# EXTERIOR LINES

Scale 2 miles to 1 inch Magnetic Variation East

10<sup>th</sup> Standard Parallel North

40.00  
14.34  
25.66



Standard Lines at	Intermediate rates	16 mi	50 chs.	20 lks.
"	Minimum	1	29	30
Township	Intermediate	139	78	53
"	Minimum	12	49	56
Connections	Intermediate	0	25	06
"	Minimum	0	6	80

I hereby certify that the above diagram of the Exterior Lines of Townships 37 and 38 North Range 110 West, Townships 37 and 38 North Range 111 West, Townships 37 and 38 North Range 112 West, Townships 37, 38, 39 and 40 North Range 113 West, Townships 36, 37 and 38 North Range 114 West, Townships 37 and 38 North Range 115 West, and the 9<sup>th</sup> Standard Parallel North, West of the 6<sup>th</sup> Principal Meridian Wyoming, is strictly conformable to the field notes of the survey thereof on file in this office which have been examined and approved

Surveyor General's Office

Cheyenne Wyo, June 22, 1895

*John Charles Thompson*  
U. S. Surveyor General

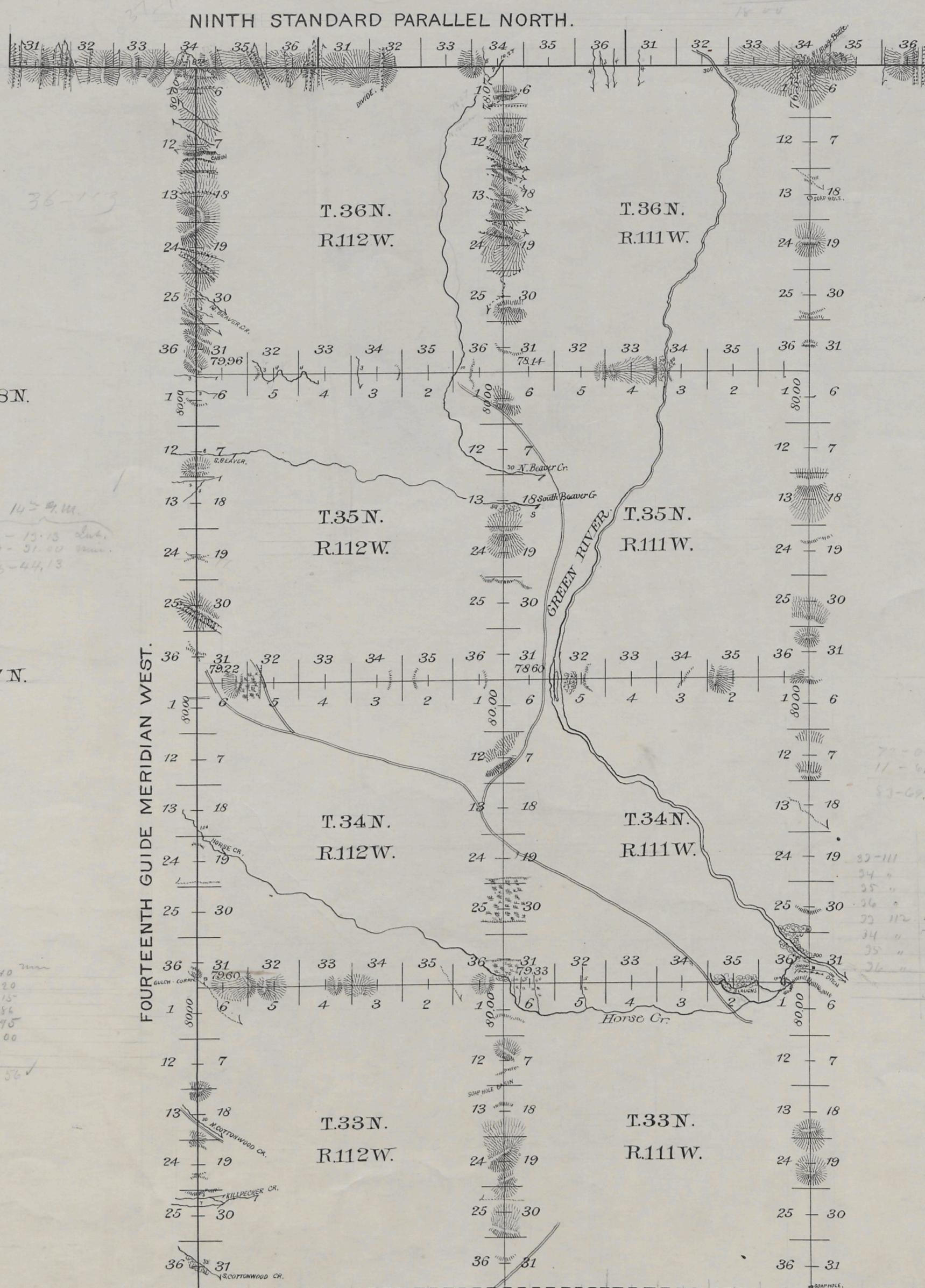
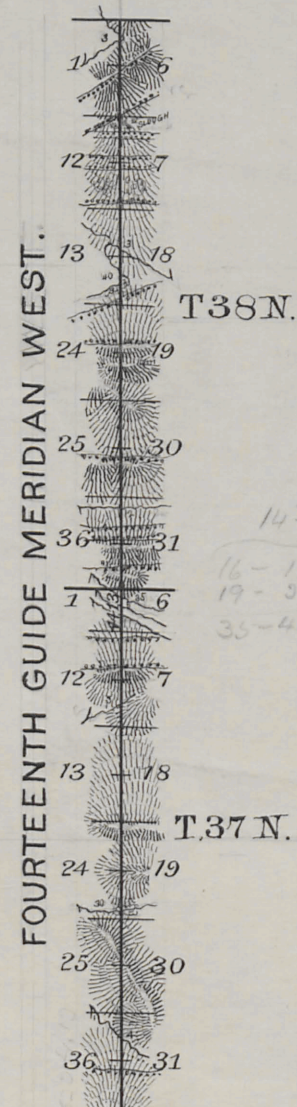
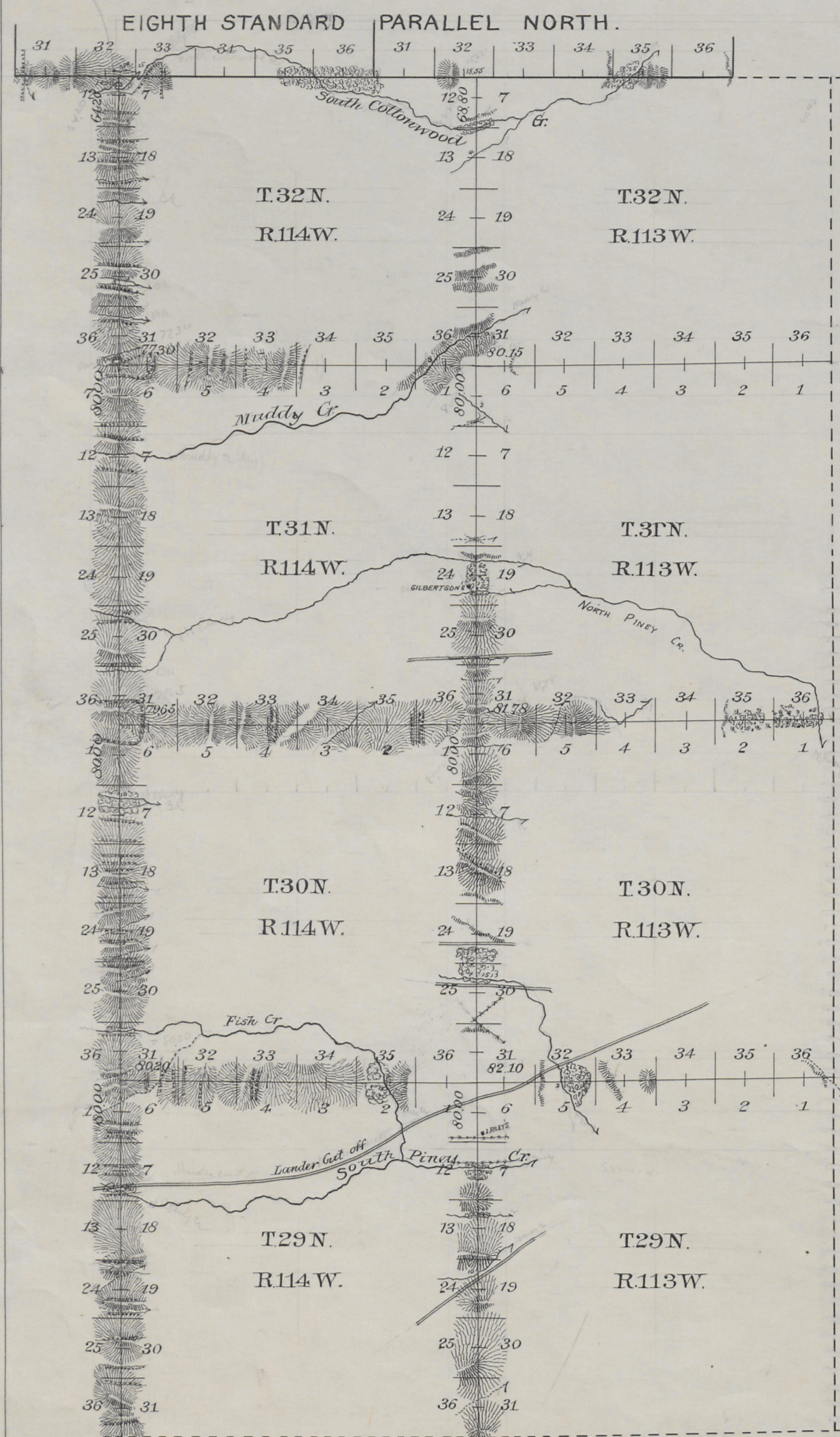
2684

Surveys Designated	By Whom Surveyed	Date of Contract	Amount of Surveys	When Surveyed	Magnetic Declination
Township Lines	Carpenter & Warner	Jan. 12 1893	152 mi. 48 chs. 09 lks	June 17 Sept 19 93	17° 28' 18" East
Standard Lines	"	"	18 " 00 " 00 "	June 10-15 1893	17° 38' 17" 42' "
Connections	"	"	0 " 31 " 93 "		



## EXTERIOR LINES.

Scale 2 miles to 1 inch. Magnetic Variation East.



8 <sup>th</sup> Stnd. P. N.	at intermediate rates	4 <sup>mts</sup>	60 <sup>ths</sup>	00 <sup>ths</sup>
	minimum	7	20	00
9 <sup>th</sup>	intermediate	8	14	00
	minimum	9	66	00
14 <sup>th</sup> Guide M. W.	intermediate	16	13	13
	minimum	19	31	00
Township lines	intermediate	62	13	63

Connecting lines at minimum rates 0<sup>cts</sup> 14<sup>cts</sup> 96<sup>cts</sup>

<i>Surveys Designated.</i>	<i>By Whom Surveyed.</i>	<i>Date of Contract.</i>	<i>Amount of Surveys, acres.</i>	<i>When Surveyed.</i>	<i>Magnetic Declination.</i>
<i>8<sup>th</sup> Stand. Par. N.</i>	<i>Shannon &amp; Shannon</i>	<i>Sept 2<sup>d</sup> 1892</i>	<i>12 00 00</i>	<i>Oct. 3<sup>rd</sup> 1892</i>	<i>17°55'-18°02' East</i>
<i>9<sup>th</sup> Stand. Par. N.</i>	<i>" " "</i>	<i>" " "</i>	<i>18 00 00</i>	<i>Sept 30-Oct 2, 1892</i>	<i>18°06'-18°10' East</i>
<i>14<sup>th</sup> Guide. Mer. W.</i>	<i>" " "</i>	<i>" " "</i>	<i>35 44 13</i>	<i>Sep 25-30, 1892</i>	<i>17°54'-18°20' East</i>
<i>Township Lines</i>	<i>" " "</i>	<i>" " "</i>	<i>165 43 62</i>	<i>Oct 4 Nov 17, 1892</i>	<i>17°39' East</i>
<i>Connections</i>	<i>" " "</i>	<i>" " "</i>	<i>14 96</i>	<i>" " "</i>	<i>" " "</i>

I hereby certify that the above diagram of the Exterior lines of Townships 33, 34, 35 and 36 North, Ranges 111 and 112 West, Townships 29, 30, 31 and 32 North, Ranges, 113, and 114 West, the 8<sup>th</sup> and 9<sup>th</sup> Standard Parallels North and the 14<sup>th</sup> Guide Meridian, west of the 6<sup>th</sup> Principal Meridian, Wyoming, is strictly conformable to the field notes of survey thereof on file in this office, which have been examined and approved.

Surveyor General's Office,  
Cheyenne, Wyo. April 19, 1893.

Wm A. Richards  
U.S. Surveyor General.