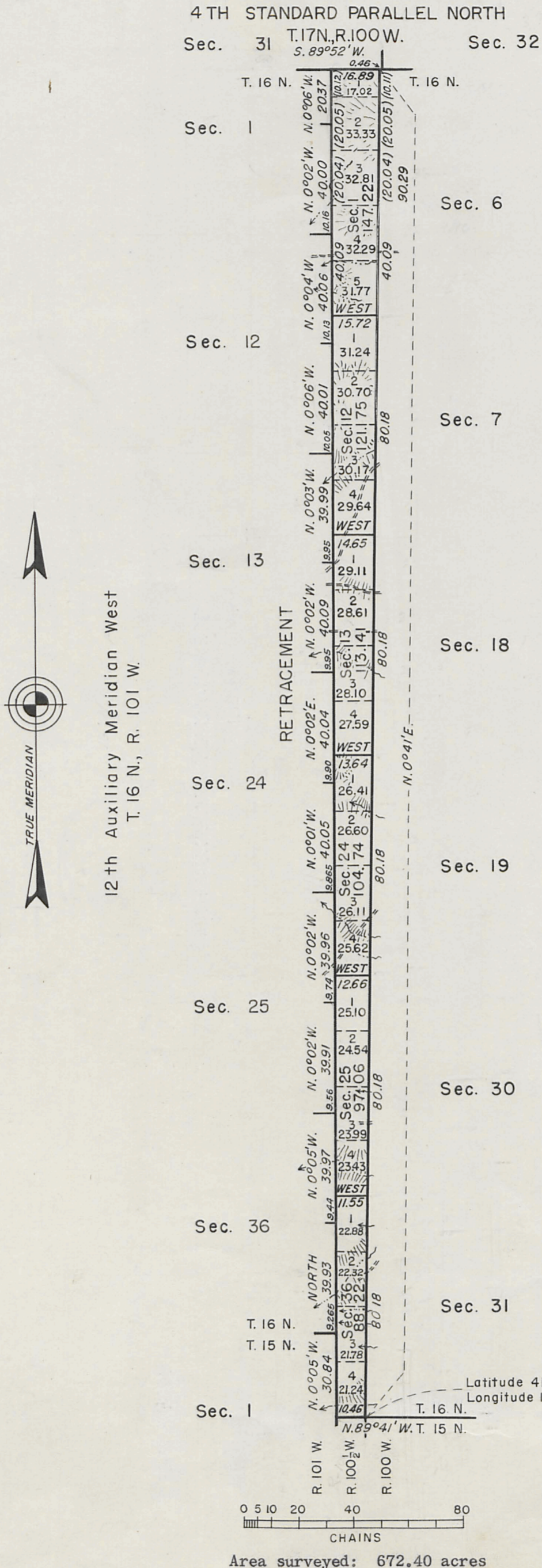


## T. 16 N., R. 100 1/2 W., Sixth Principal Meridian, Wyoming, Field Note Links

Plat Accession Number(s)	Year(s) of Survey	Township Subdivision Plats
6705	1953	<a href="https://www.wy.blm.gov/cadastral/countyplats/sweetwater/fieldnotes/t16nr100.5w_gp012fn.pdf">https://www.wy.blm.gov/cadastral/countyplats/sweetwater/fieldnotes/t16nr100.5w_gp012fn.pdf</a>
		Township Exterior Plats

TOWNSHIP 16 NORTH, RANGE 100 1/2 WEST OF THE SIXTH PRINCIPAL MERIDIAN, WYOMING. SURVEY AND DEPENDENT RESURVEY



This plat represents a resurvey of the West boundary of T. 16 N., R. 100 W., and the East boundary of T. 16 N., R. 101 W., designed to restore the corners in their original locations according to the best available evidence, and a survey of the subdivisional lines of T. 16 N., R. 100 1/2 W.

The history of the earlier surveys is set forth in the field note record, which creates the hiatus requiring this survey.

The land is rough and rolling with scattered pine and cedar timber.

The East boundary of R. 101 W. was resurveyed by Burnham in 1911. The South boundary of R. 100 1/2 W. was resurveyed concurrently under this same group, by R. C. Mac Donald.

Resurvey of West boundary of T. 16 N., R. 100 W., and the East boundary of T. 16 N., R. 101 W., and survey of subdivisional lines of T. 16 N., R. 100 1/2 W. executed by R. C. Mac Donald, May 22 to 29, 1953, under supplemental special instructions for Group 12, Wyoming, dated March 20, 1953.

UNITED STATES DEPARTMENT OF THE INTERIOR  
BUREAU OF LAND MANAGEMENT  
Washington, D. C. December 26, 1956

This plat is strictly conformable to the approved field notes, and the survey, having been correctly executed in accordance with the requirements of law and the regulations of this Bureau, is hereby accepted.

For the Director

*Donald B. Cement*

Acting Cadastral Engineering Staff Officer