

T. 20 N., R. 109 W., Sixth Principal Meridian, Wyoming, Field Note Links

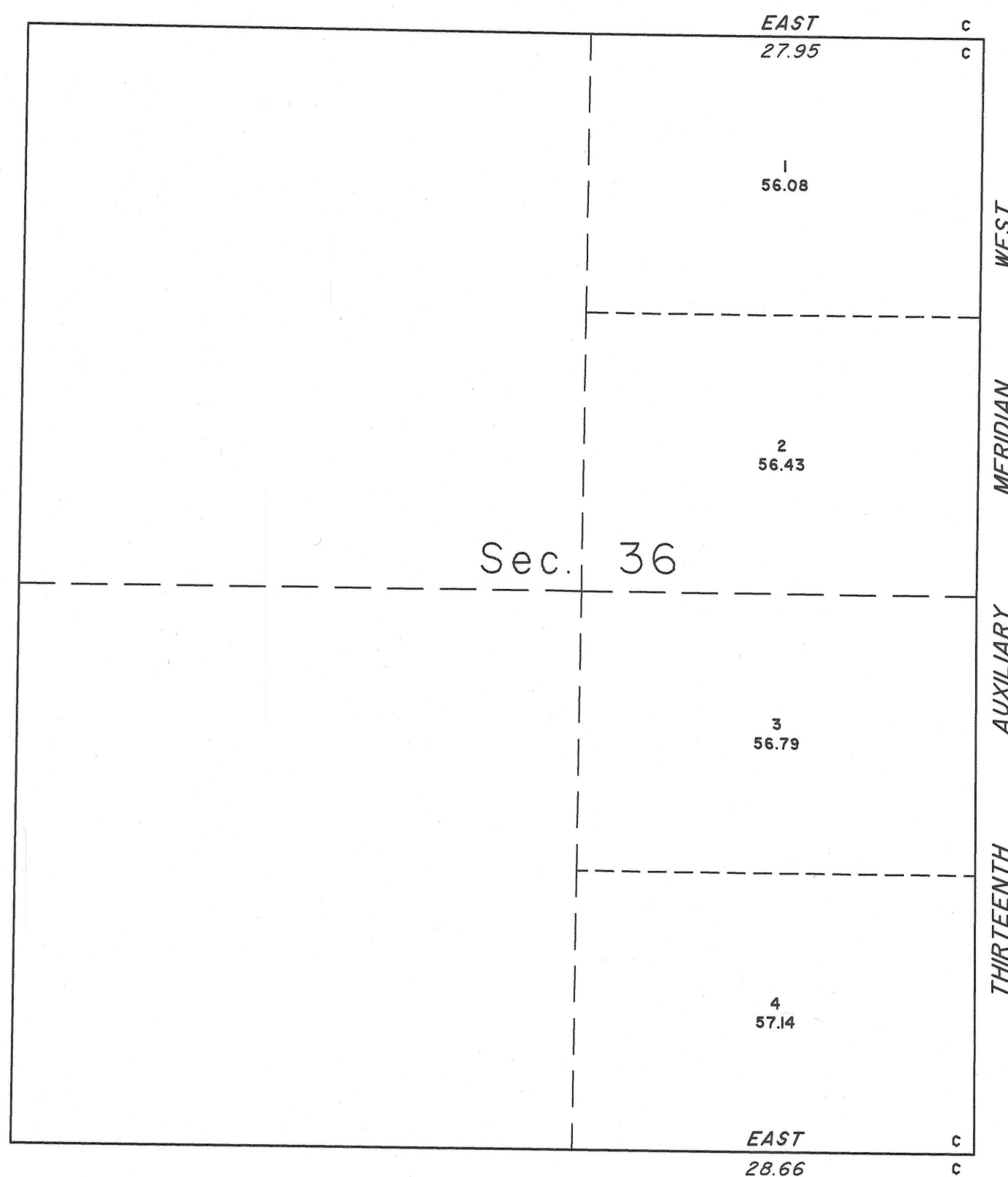
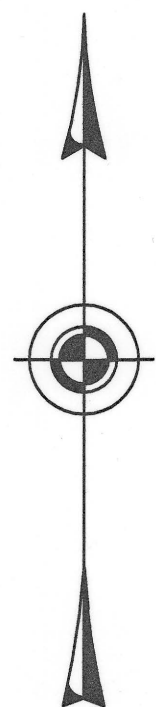
Plat Accession Number(s)	Year(s) of Survey	
		Township Subdivision Plats
8775	2017-19	https://www.wy.blm.gov/cadastral/countyplats/sweetwater/fieldnotes/t20nr109w_gp973fn.pdf
8416	2003-04	https://www.wy.blm.gov/cadastral/countyplats/sweetwater/fieldnotes/t20nr109w_gp723fn.pdf
8147	1996	https://www.wy.blm.gov/cadastral/countyplats/sweetwater/fieldnotes/t20nr109w_gp618fn.pdf
453	1914	https://www.wy.blm.gov/cadastral/countyplats/sweetwater/fieldnotes/t20nr109w_gp014fn.pdf
453	1914	https://www.wy.blm.gov/cadastral/countyplats/sweetwater/fieldnotes/t20nr109_110w_gp014fn_5PN.pdf
452	1875	https://www.wy.blm.gov/cadastral/countyplats/sweetwater/fieldnotes/t20nr109w_c077fn.pdf
		Township Exterior Plats
4057	1907	https://www.wy.blm.gov/cadastral/countyplats/sweetwater/fieldnotes/ext2343.pdf
4057	1907	https://www.wy.blm.gov/cadastral/countyplats/sweetwater/fieldnotes/retext2343.pdf
449	1883:1884	https://www.wy.blm.gov/cadastral/countyplats/sweetwater/fieldnotes/retext0395.pdf
449	1875	https://www.wy.blm.gov/cadastral/countyplats/sweetwater/fieldnotes/ext0449.pdf
415	1883	https://www.wy.blm.gov/cadastral/countyplats/sweetwater/fieldnotes/retext0364.pdf

T. 20 N., R. 109 W., Sixth Principal Meridian, Wyoming, Field Note Links

Plat Accession Number(s)	Year(s) of Survey	
415	1874	https://www.wy.blm.gov/cadastral/countyplats/sweetwater/fieldnotes/ext0415.pdf

TOWNSHIP 20 NORTH, RANGE 109 WEST, OF THE SIXTH PRINCIPAL MERIDIAN, WYOMING.

SUPPLEMENTAL PLAT



This plat showing the creation of lots 1 through 4, to identify accurate acreage of section 36, T. 20 N., R. 109 W., Sixth Principal Meridian, Wyoming, is based on the plat approved March 7, 1916.

Certain modified lots and areas shown hereon pertain to Federal interest estate only. Except as indicated hereon, the lotting and areas are as shown on the plat approved November 12, 1875.

Plat prepared by James E. Jacob, Cadastral Surveyor, on October 3, 2023, pursuant to special instructions and assignment instructions dated September 29, 2023, for Group No. 1090, Wyoming.

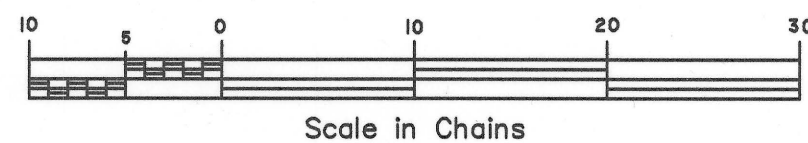
UNITED STATES DEPARTMENT OF THE INTERIOR
BUREAU OF LAND MANAGEMENT

Cheyenne, Wyoming November 28, 2023

This plat showing the creation of lots 1 through 4, section 36, is based upon official records and, having been correctly prepared in accordance with the regulations of this Bureau, is hereby accepted.

For the Director

Sojha S. Sparks
Chief Cadastral Surveyor for Wyoming



TOWNSHIP 20 NORTH, RANGE 109 WEST, OF THE SIXTH PRINCIPAL MERIDIAN, WYOMING.

DEPENDENT RESURVEY AND SURVEY

Meander of the Right Bank of the Green River

From the point for the special meander cor. on the R. bank of the Green River on the E. and W. center line of sec. 9.

Downstream through Sec. 9

S.35°48'E., 0.18 chs.

S.29°22'E., 1.25 chs.

S.28°41'E., 8.44 chs.

S.23°01'E., 1.46 chs.

The special meander cor. on the R. bank of the Green River on the E. and W. center line of the NW1/4SW1/4 of Sec. 9.

Informative Traverse of the Left Bank of the Green River

From the intersection of the L. bank of the Green River on the E. and W. center line of Sec. 9.

Downstream through Sec. 9

S.37°22'E., 0.03 chs.

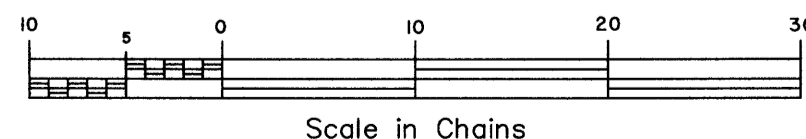
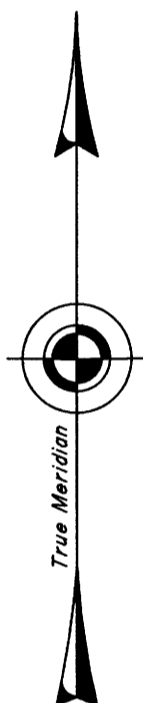
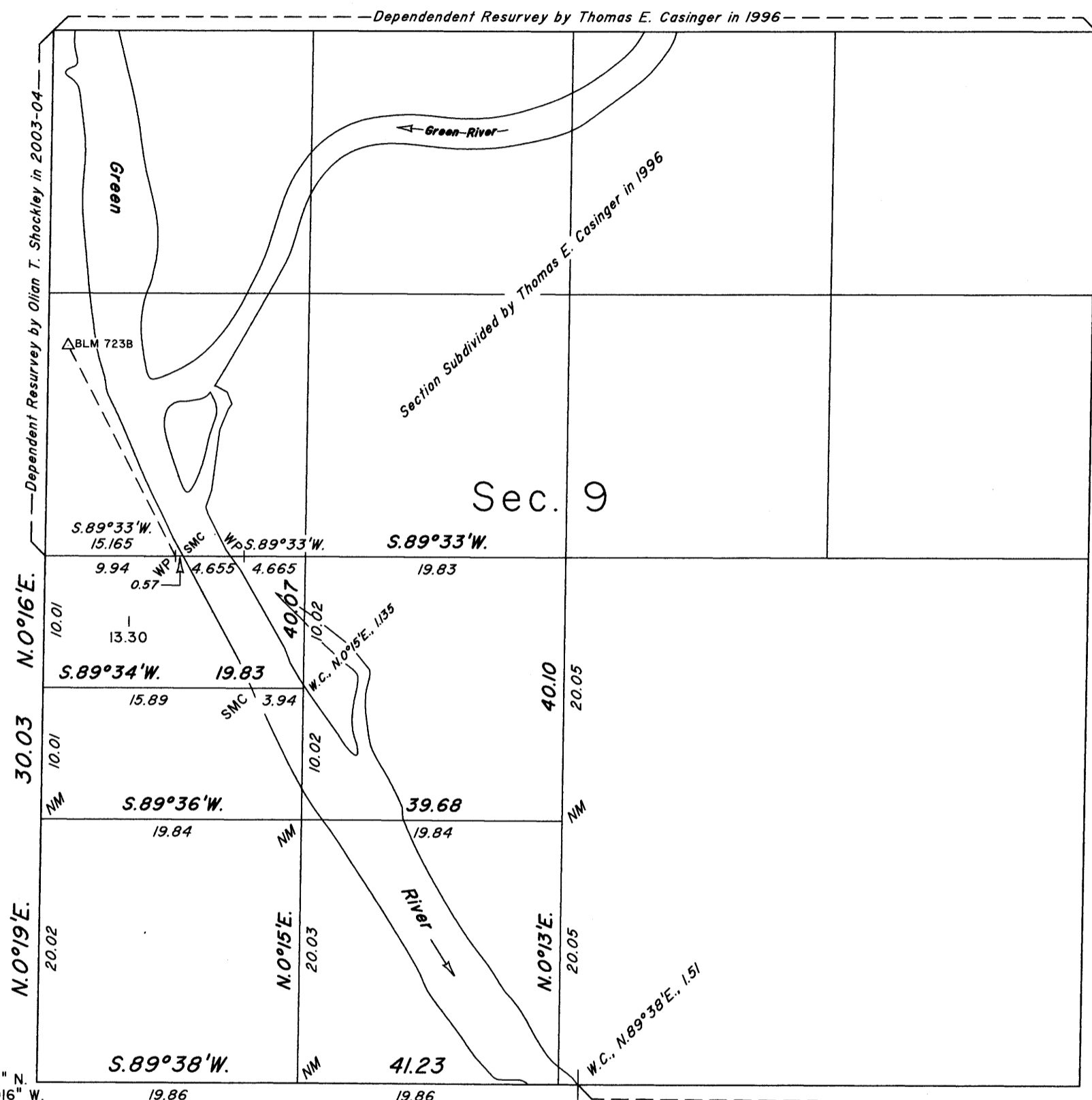
S.38°43'E., 3.49 chs.

S.62°06'E., 1.22 chs.

S.56°28'E., 1.74 chs.

The L. bank of the Green River on the N. and S. center line of the SW1/4 of Sec. 9

Lat. 41°43'17.387" N
Long. 109°43'47.916" W
NAD83(2011)(EPOCH:2010)



A history of surveys is contained in the field notes.

This plat represents the dependent resurvey of a portion of the subdivisional lines and the subdivision of section 9, designed to restore the corners in their true original locations according to the best available evidence, and the subdivision of section 9, the meanders of the right bank of the Green River and the informative traverse of the left bank of the Green River through a portion of section 9, T. 20 N., R. 109 W., Sixth Principal Meridian, Wyoming.

Except as indicated hereon, the lotting and areas are as shown on the plats approved November 12, 1875 and March 7, 1916.

Survey executed by Olian T. Shockley, Cadastral Surveyor, beginning October 11, 2017, and completed May 9, 2019, pursuant to special instructions and assignment instructions dated August 17, 2017, for Group No. 973, Wyoming.

Note: NM indicates corner not monumented.

UNITED STATES DEPARTMENT OF THE INTERIOR
BUREAU OF LAND MANAGEMENT

Cheyenne, Wyoming March 25, 2020

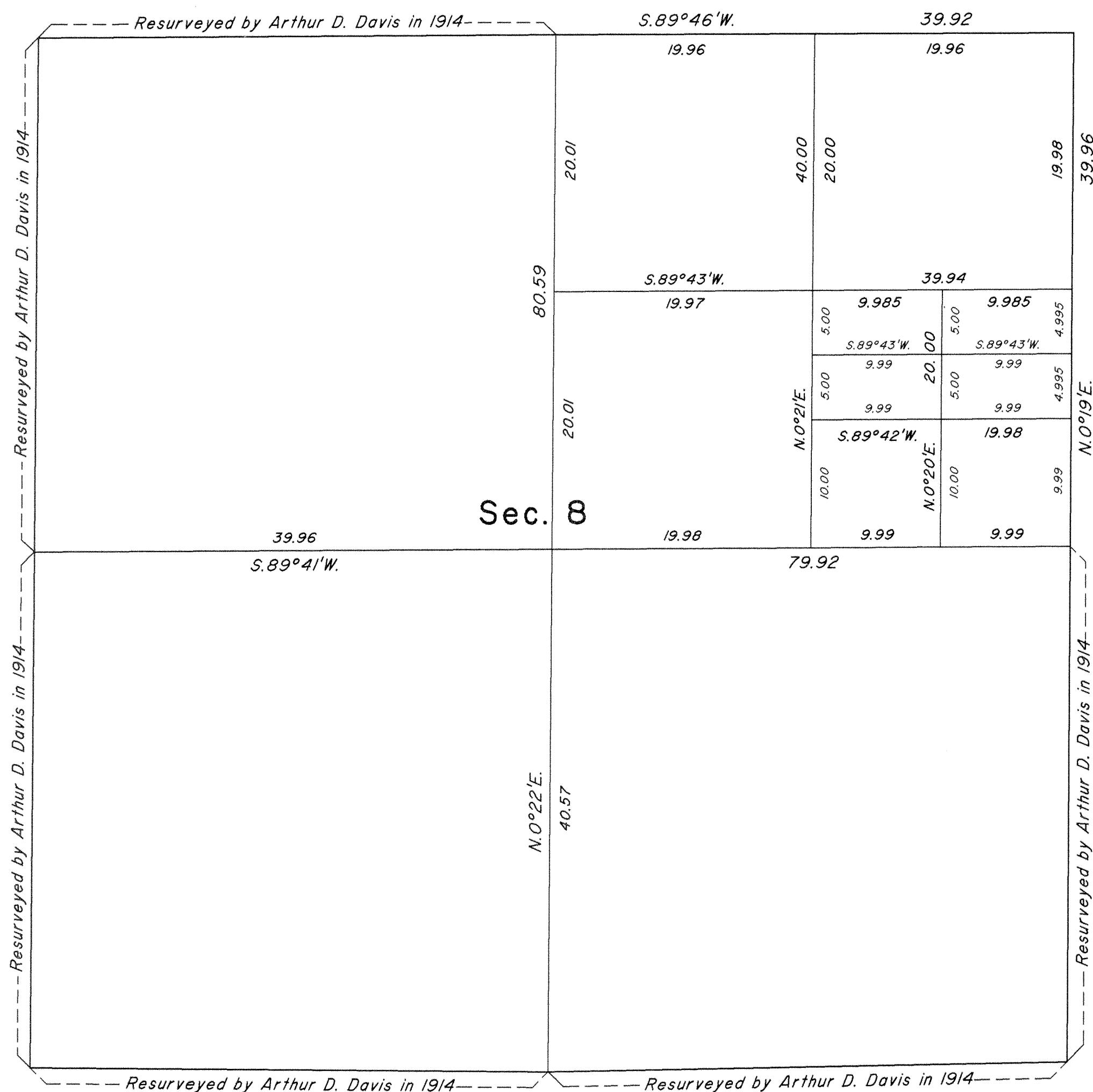
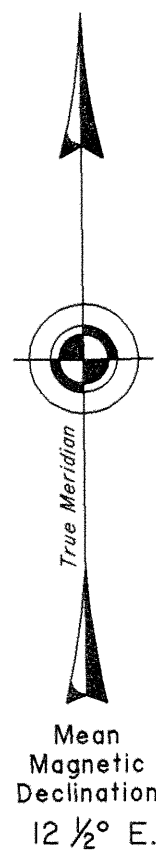
This plat is strictly conformable to the approved field notes, and the survey, having been correctly executed in accordance with the requirements of law and the regulations of this Bureau, is hereby accepted.

For the Director

Sonja S. Sparks
Chief Cadastral Surveyor for Wyoming

TOWNSHIP 20 NORTH, RANGE 109 WEST, OF THE 6th PRINCIPAL MERIDIAN, WYOMING.

DEPENDENT RESURVEY AND SUBDIVISION OF SECTION 8



Lat. 41°43'43.486" N.
Long. 109°43'47.739" W.
NAD 83 (1993)

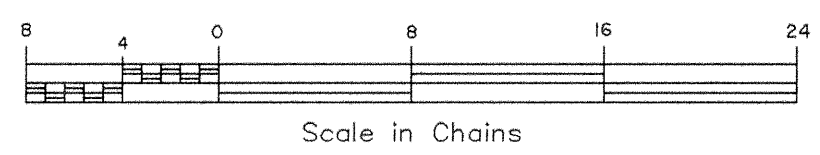
A history of surveys is contained in the field notes.
This plat represents the dependent resurvey of a portion of the subdivisional lines, designed to restore the corners in their true original locations according to the best available evidence, and the subdivision of section 8, T. 20 N., R. 109 W., Sixth Principal Meridian, Wyoming.
The lottings and areas are as shown on the plat approved March 7, 1916.
Survey executed by Olian T. Shockley, Cadastral Surveyor, beginning October 29, 2003, and completed May 6, 2004, pursuant to Special Instructions and Assignment Instructions dated October 14, 2003, for Group No. 723, Wyoming.

UNITED STATES DEPARTMENT OF THE INTERIOR
BUREAU OF LAND MANAGEMENT
Cheyenne, Wyoming December 16, 2005

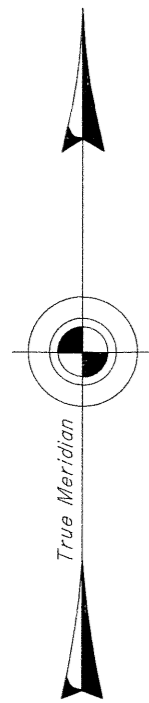
This plat is strictly conformable to the approved field notes, and the survey, having been correctly executed in accordance with the requirements of law and the regulations of this Bureau, is hereby accepted.

For the Director

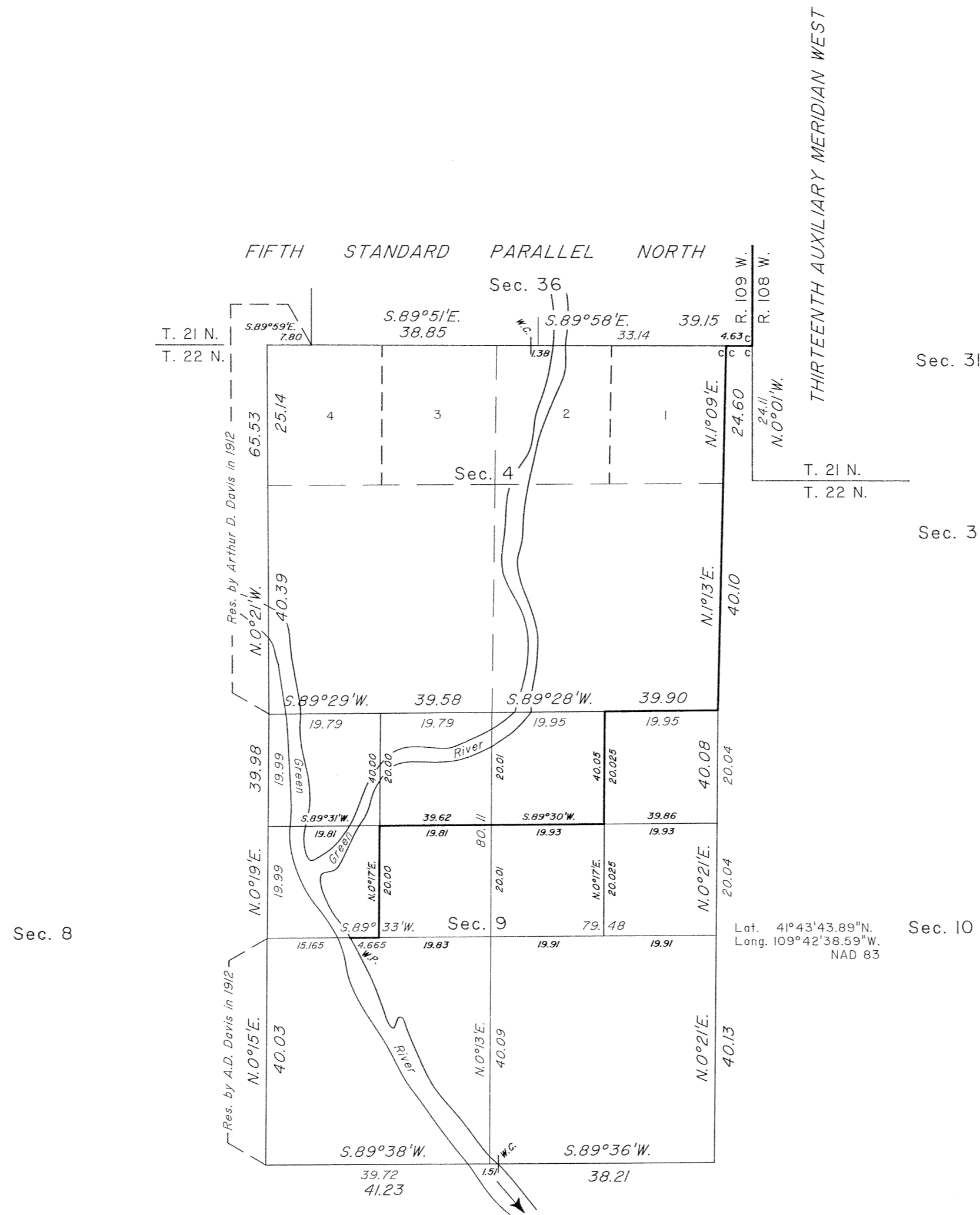
John P. Lee
Chief Cadastral Surveyor for Wyoming



TOWNSHIP 20 NORTH, RANGE 109 WEST, OF THE SIXTH PRINCIPAL MERIDIAN, WYOMING.
DEPENDENT RESURVEY AND SUBDIVISION OF SECTION 9



Mean magnetic declination
13° E.



A history of surveys in contained in the field notes.

A portion of the Thirteenth Auxiliary Meridian West, through Townships 20 and 21 North, between Ranges 108 and 109 West, and a portion of the Fifth Standard Parallel North, through Range 109 West, was dependently resurveyed by Thomas E. Casinger during the dependent resurvey in T. 21 N., R. 109 W., executed concurrently under this same group.

This plat represents the dependent resurvey of a portion of the subdivisional lines designed to restore the corners in their true original locations according to the best available evidence, and the subdivision of Section 9, T. 20 N., R. 109 W., Sixth Principal Meridian, Wyoming.

The lottings and areas are as shown on the plats approved November 12, 1875, and March 7, 1916.

Survey executed by Thomas E. Casinger, beginning August 5, 1996, and completed August 7, 1996, pursuant to Special Instructions dated May 10, 1996, for Group No. 618, Wyoming.

UNITED STATES DEPARTMENT OF THE INTERIOR
BUREAU OF LAND MANAGEMENT

Cheyenne, Wyoming April 4, 1997

This plat is strictly conformable to the approved field notes, and the survey, having been correctly executed in accordance with the requirements of law and the regulations of this Bureau, is hereby accepted.

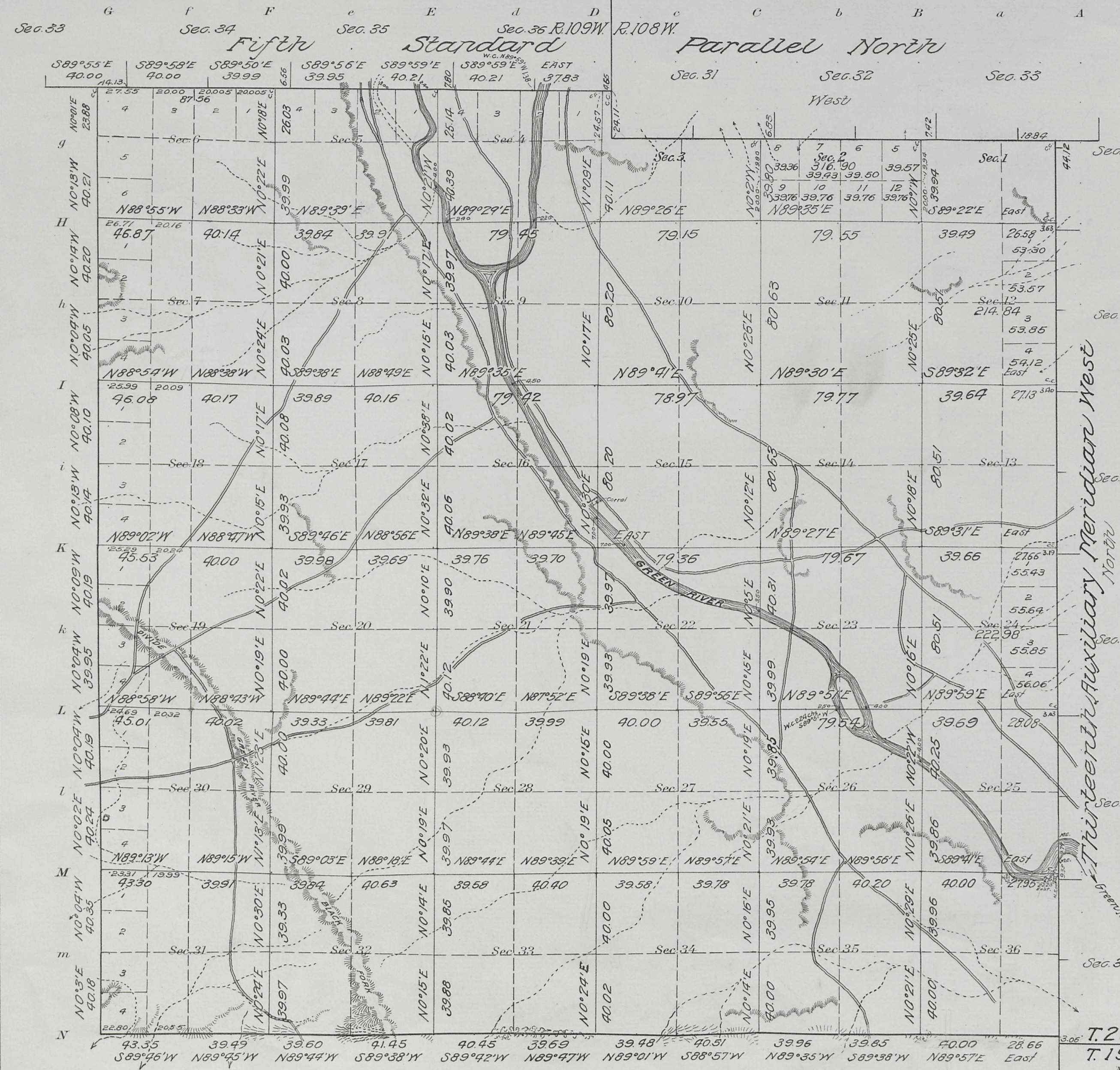
For the Director

John P. Lee
Chief Cadastral Surveyor for Wyoming

— = SEEDSKADEE WILDLIFE
REFUGE BOUNDARY

JLM

Resurvey Township N^o 20 North Range N^o 109 West of the Sixth Principal Meridian, Wyoming.



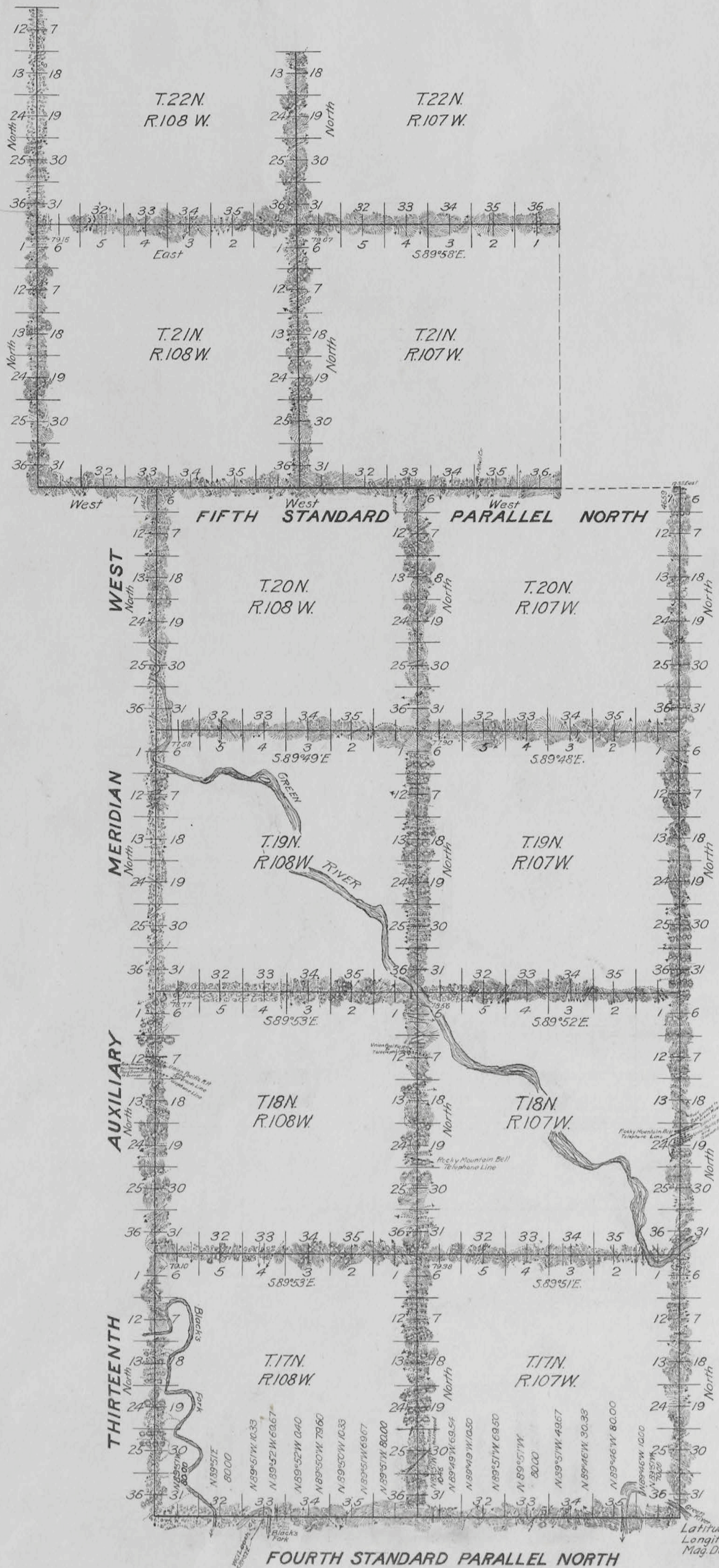
The resurvey represented by this plat was made for the purpose of restoring to their original positions all lost or obliterated corners necessary to define the boundaries of the sections and quarter sections in accordance with the original survey of the township as approved November 12, 1875. The boundaries of the sections are unchanged from those fixed by the original survey except for the east half of sections 12, 13, 24, 25, 36, and sections 1, 2, 3, bordering on the 13th Auxiliary Meridian West, and the 5th Standard Parallel North, which were resurveyed independently by Stewart and Allyn under Contract 327. Therefore the plat of the original survey remains in full force and effect, except for the above sections and half sections, and this plat shows the areas of, the east half of Sections 12 and 24, and all of Section 2, only, as these sections are unpatented and their east or north boundaries, as the case may be, do not conform to their original positions.

Areas in Acres	
Public Land	754.72
Indian Reservation	
Indian Allotments	
Mineral Claims	
Water Surface	
Total Area	

T. 20 N.
T. 19 N.
Scale 40 Chains to an inch
Mean Magnetic Declination
Longitude 109° 39' W
Latitude 41° 40' N

Surveys Designated	By Whom Surveyed	Group		Amount of Surveys		When Surveyed		
		No.	Date	Mls. chs.	lks.	Began	Completed	
Resurvey Subdivisions	Arthur D. Davis	14	July 18, 1912	57	73	63	Sept. 9, 1914	Sept. 25, 1914
" West Bay Line	"	"	"	5	65	68	Sept. 3, 1914	Sept. 19, 1914
" Stand. Parallel	"	"	"	3	12	32	Sept. 16, 1914	Sept. 18, 1914
" South Bay Line	Jacobel & Voigt	14	July 18, 1912	5	72	49	Oct. 10, 1912	Oct. 10, 1912
" Connecting Lines	Arthur D. Davis	14	"	42	63		Sept. 9, 1914	Sept. 25, 1914
" Aux. Meridian	Stewart & Allyn	327	June 29, 1907	5	41	06	Aug. 15, 1907	Aug. 15, 1907
" Stand. Parallel	"	"	"	2	58	84	Aug. 14, 1907	Aug. 14, 1907

The above map of Township No. 20 North Range No. 109 West of the Sixth Principal Meridian Wyoming is strictly conformable to the field notes of the survey thereof on file in this office, which have been examined and approved
U. S. Surveyor General's Office.
Cheyenne Wyoming March 7, 1916
Charles L. Becker
Surveyor General.



RESURVEY TOWNSHIP EXTERIORS

Scale: 160 chains to 1 inch.

This Plat
of the Resurvey of
the Fourth and Fifth Standard Parallels North,
through Ranges 107 and 108 West; the Thirteenth
Auxiliary Meridian West, through Townships, 17, 18,
19, 20, 21 and 22 North; the North and East Bound-
aries of Townships 17, 18 and 19 North, Ranges 107 and
108 West; the North and East Bound-
aries of Township 20 North,
Ranges 107 and 108 West; the North and East Bound-
aries of Township 21 North, Range 108 West; the
North Boundary of Township 21 North, Range 107
West, and the East Boundary of Township 22
North, Range 108 West of the

Sixth Principal Meridian, Wyoming,
is strictly conformable to the field notes of the
resurvey thereof by

Stewart and Allyn, U.S.D.S.
under their Contract N^o 327, dated June 24, 1907,
which have been examined and approved and
filed in this office.
U.S. Surv. Gen'l's Office,
Cheyenne, Wyoming,
March 14, 1910

Alphens Robinson
U.S. Surv. Gen'l.

TABLE OF MILEAGE

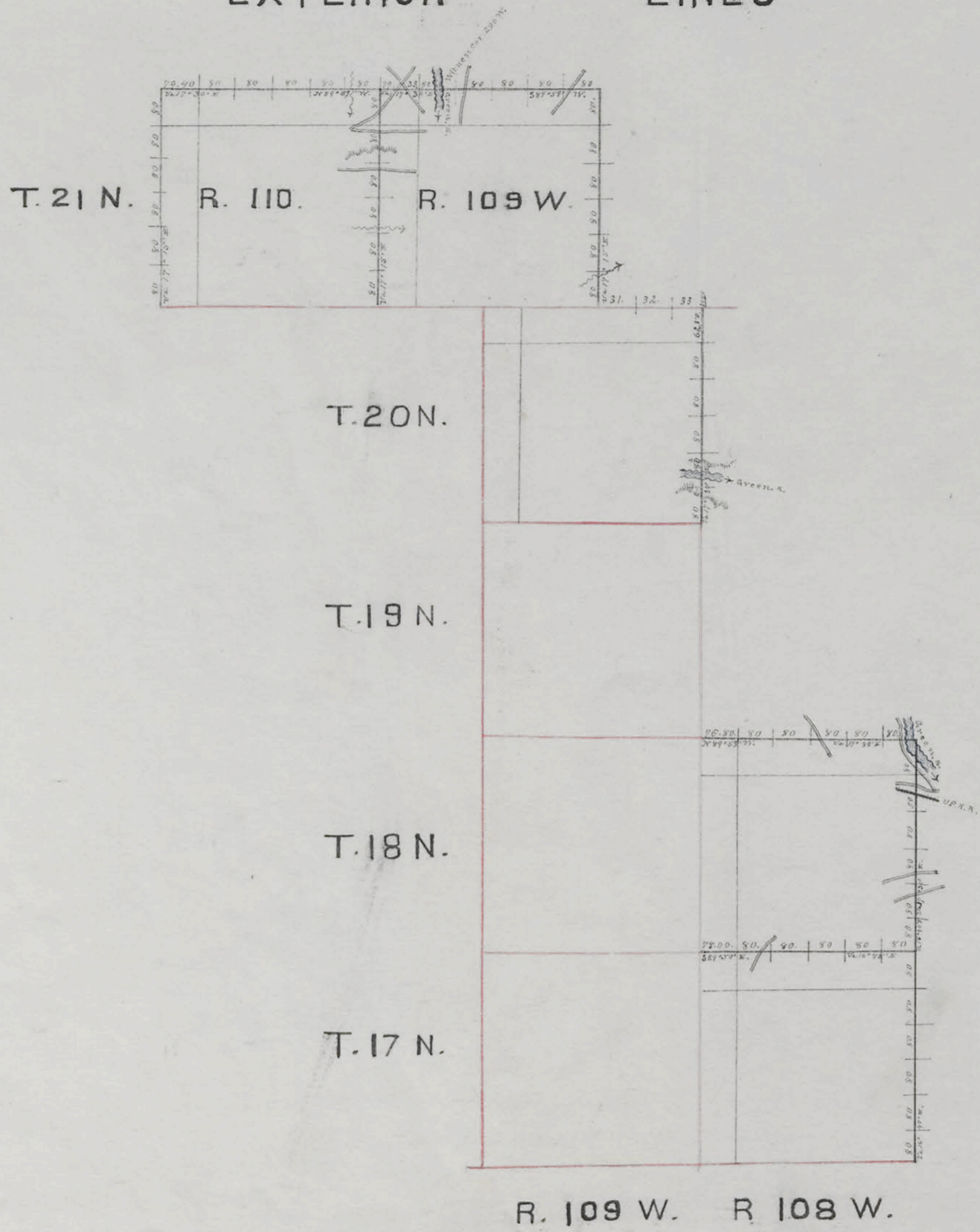
Surveys Designated	Amount	When Surveyed.
	Mls. Chs Lks.	
Standard Lines	58 - 44 - 12	July 5 - Sept 4, 1907.
Township Lines	105 - 01 - 07	July 8 - Aug. 30, 1907.
Connecting Lines	47 - 31	July 8 - Aug. 15, 1907.

39
1057

Accepted by the Hon. Commissioner in his
letter E. Sept. 15, 1910.

149

EXTERIOR LINES



Survey Designated	By Whom Surveyed	Date of Contract	Amount of Survey	When Surveyed
Exterior Lines	George R. Thomas	June 18 th 1875	57 - 56 - 3	July 3, Aug 2, 1875
Connections	"	"	10 - 0	"

I hereby certify that the above Diagram of the Exterior Lines of Townships 17 and 18 North Range 108 West Townships 20 and 21 North Range 109 West, and Township 21 North Range 110 West of 6th Principal Meridian in Wyoming Territory is strictly conformable to the field notes of the survey thereof on file in this office which have been examined and approved

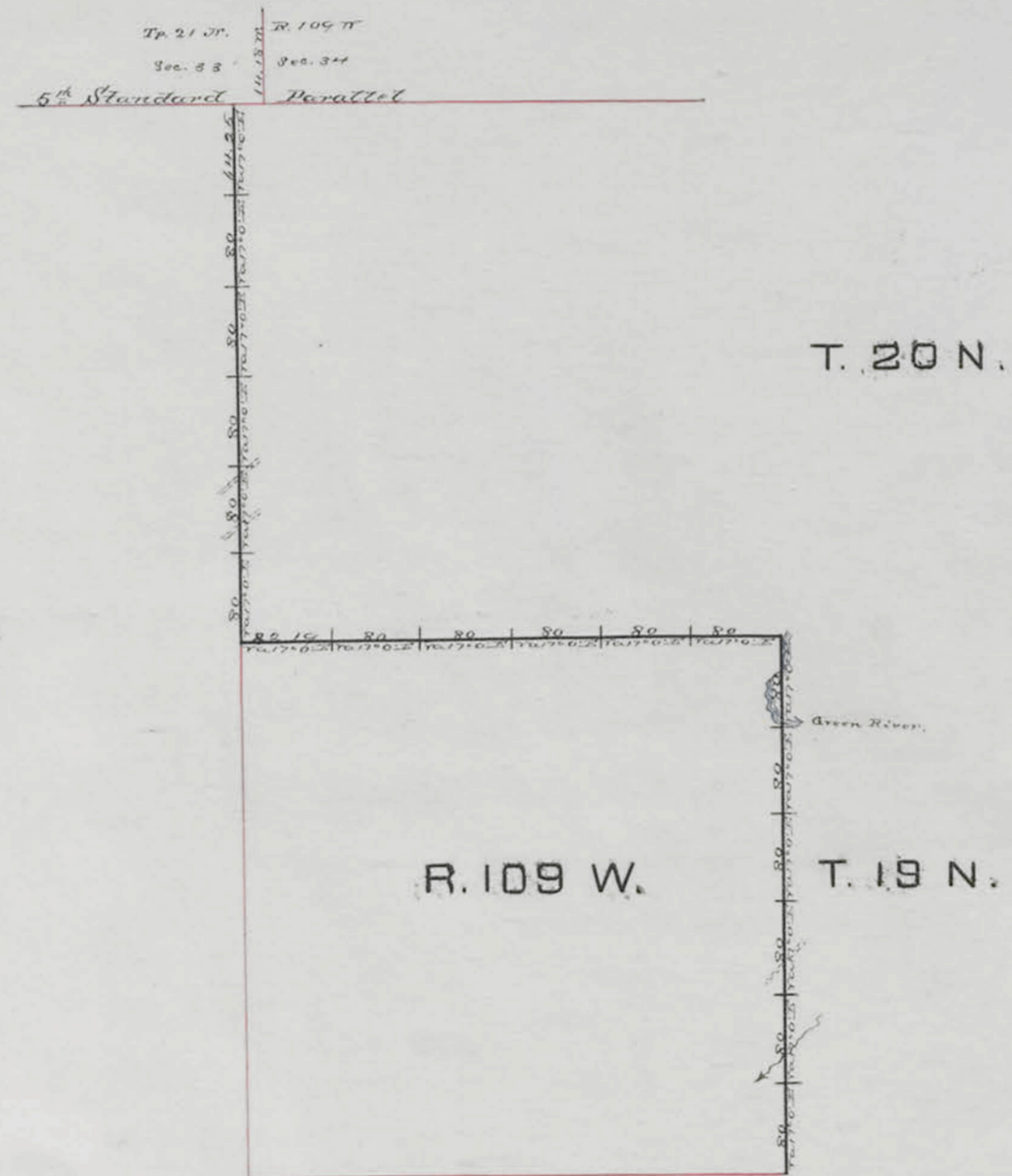
Surveyor General's office
Cheyenne Wyo. Nov. 12. 1875

Edw. C. David
Surveyor Genl

(3)
Index

415

EXTERIOR LINES



Survey Designated	By Whose Survey	Date of Contact	Amount of land	When Surveyed
Exterior Lines	Rogers and Lampton	August 24th 1874	17 - 66 - 111	Sept. 14th 1874
Connections	Rogers and Lampton	August 24th 1874	12 - 13	Sept. 14th 1874

I hereby certify that the above Diagram of the Exterior Lines of Townships 19 North Range 109 West and 20 North Range 110 West of the 6th Principal Meridian in Wyoming Territory is strictly conformable to the field notes of the survey thereof on file in this Office which have been examined and approved.

Surveyor General's Office
Cheyenne Wyo. Nov. 17th 1874

Silas Reed
Sur. General.