

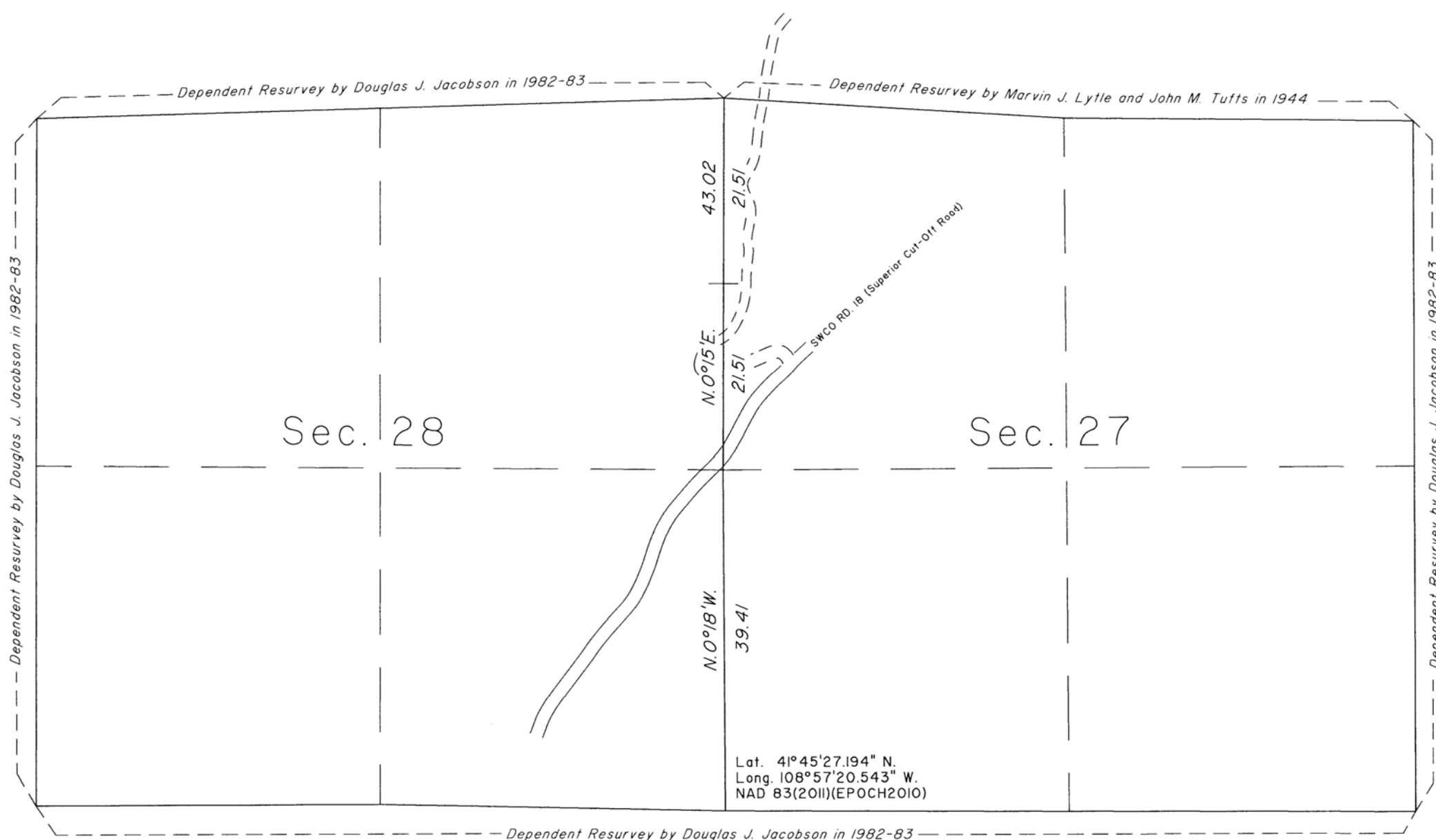
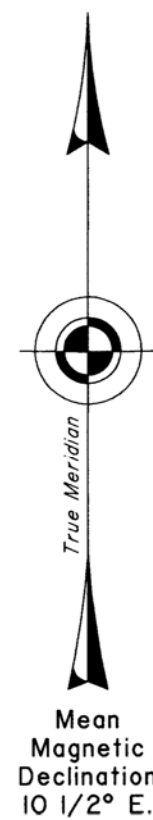
T. 21 N., R. 102 W., Sixth Principal Meridian, Wyoming, Field Note Links

Plat Accession Number(s)	Year(s) of Survey	
Township Subdivision Plats		
8764	2016-17	https://www.wy.blm.gov/cadastral/countyplats/sweetwater/fieldnotes/t21nr102w_gp959fn.pdf
8739	2017	https://www.wy.blm.gov/cadastral/countyplats/sweetwater/fieldnotes/t21nr102w_gp969fn.pdf
8520	2009	https://www.wy.blm.gov/cadastral/countyplats/sweetwater/fieldnotes/t21nr102w_gp800fn.pdf
7841	1982-1983	https://www.wy.blm.gov/cadastral/countyplats/sweetwater/fieldnotes/t21nr102w_gp439fn.pdf
6382; 6383; 6384; 6385; 6386	1944	https://www.wy.blm.gov/cadastral/countyplats/sweetwater/fieldnotes/t21nr102w_gp200fn_s18_19.pdf
6377	1944	https://www.wy.blm.gov/cadastral/countyplats/sweetwater/fieldnotes/t21nr102w_gp200fn_s22.pdf
4232	1906	https://www.wy.blm.gov/cadastral/countyplats/sweetwater/fieldnotes/t21nr102w_c314fn.pdf
4231	1884	https://www.wy.blm.gov/cadastral/countyplats/sweetwater/fieldnotes/t21nr102w_c221fn.pdf
Township Exterior Plats		
4853	1906	https://www.wy.blm.gov/cadastral/countyplats/sweetwater/fieldnotes/ext2905.pdf
4217	1884	https://www.wy.blm.gov/cadastral/countyplats/sweetwater/fieldnotes/ext2434.pdf
3790	1884	https://www.wy.blm.gov/cadastral/countyplats/sweetwater/fieldnotes/retext2220.pdf

T. 21 N., R. 102 W., Sixth Principal Meridian, Wyoming, Field Note Links

Plat Accession Number(s)	Year(s) of Survey	
3790	1883	https://www.wy.blm.gov/cadastral/countyplats/sweetwater/fieldnotes/ext3790.pdf
268	1883; 1884	https://www.wy.blm.gov/cadastral/countyplats/sweetwater/fieldnotes/retext0251.pdf
268	1873	https://www.wy.blm.gov/cadastral/countyplats/sweetwater/fieldnotes/ext0268.pdf

TOWNSHIP 21 NORTH, RANGE 102 WEST, OF THE SIXTH PRINCIPAL MERIDIAN, WYOMING.
CORRECTIVE DEPENDENT RESURVEY



A history of surveys is contained in the field notes.

This plat represents the corrective dependent resurvey of a portion of the subdivisional lines, designed to restore the corners in their true original locations according to the best available evidence, T. 21 N., R. 102 W., Sixth Principal Meridian, Wyoming.

The lottings and areas are as shown on the plat approved January 7, 1908.

Survey executed by Olian T. Shockley, Cadastral Surveyor, beginning September 15, 2016, and completed July 31, 2017, pursuant to special instructions and assignment instructions dated July 20, 2016, for Group No. 959, Wyoming.

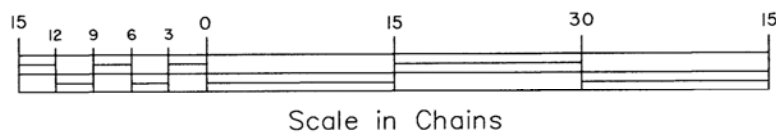
UNITED STATES DEPARTMENT OF THE INTERIOR
BUREAU OF LAND MANAGEMENT

Cheyenne, Wyoming May 31, 2019

This plat is strictly conformable to the approved field notes, and the survey, having been correctly executed in accordance with the requirements of law and the regulations of this Bureau, is hereby accepted.

For the Director

Sonja S. Sparks,
Chief Cadastral Surveyor for Wyoming



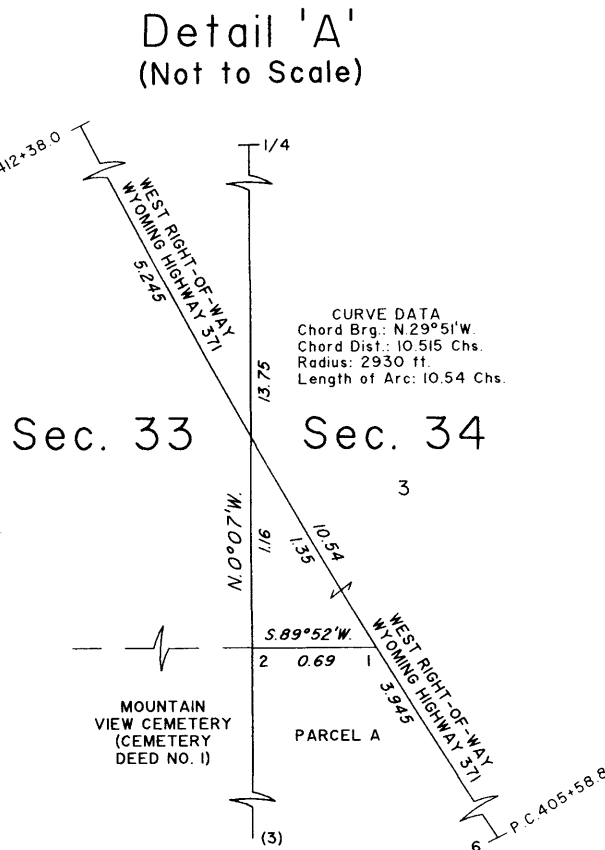
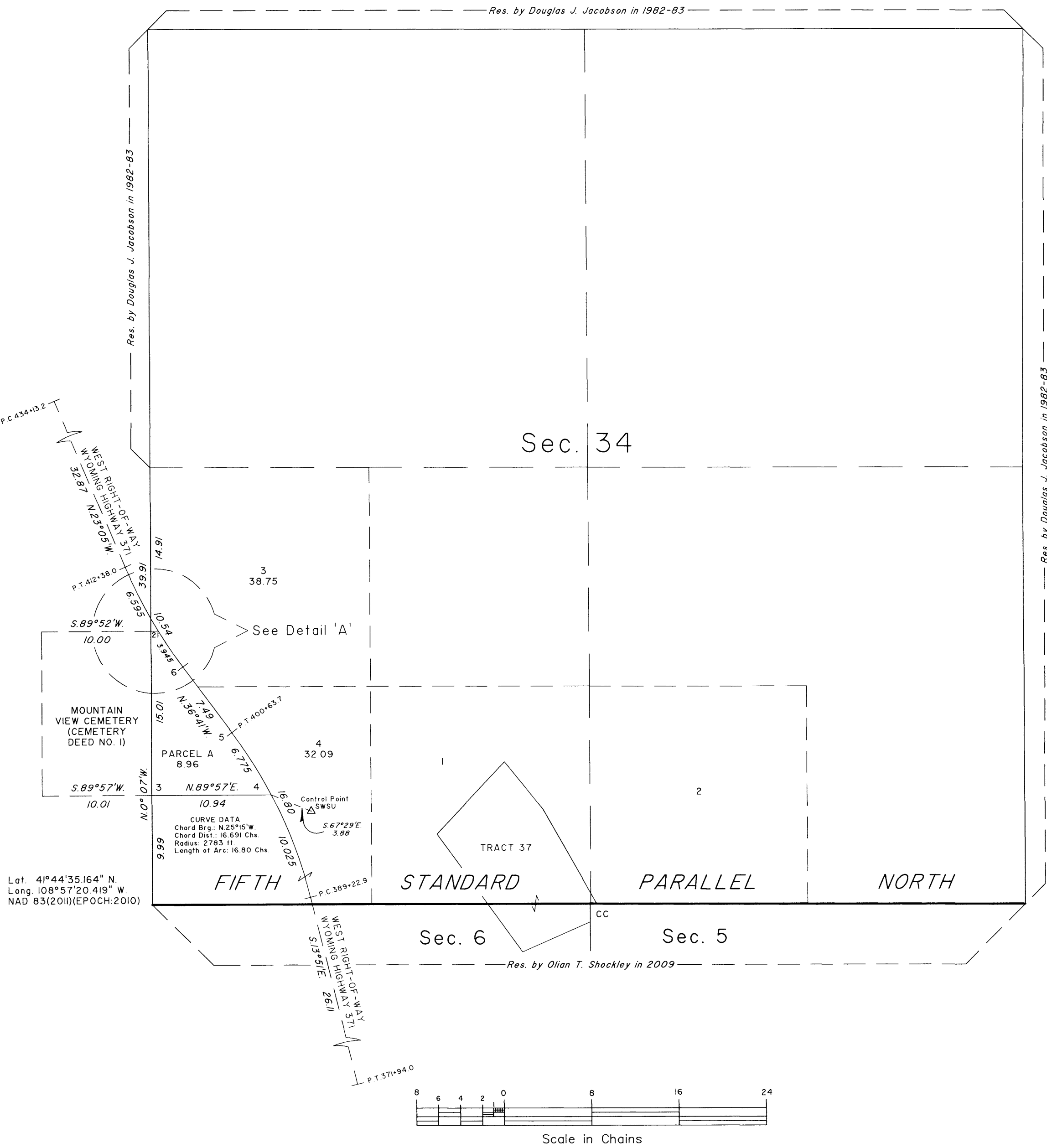
TOWNSHIP 21 NORTH, RANGE 102 WEST, OF THE SIXTH PRINCIPAL MERIDIAN, WYOMING.
DEPENDENT RESURVEY, RETRACEMENT AND SURVEY

A history of surveys is contained in the field notes.

This plat represents the dependent resurvey of a portion of the subdivisional lines, designed to restore the corners in their true original locations according to the best available evidence, the retracement of the westerly right-of-way of Wyoming State Highway No. 371 in sections 33 and 34, and the metes-and-bounds survey of Parcel A, section 34, T. 21 N., R. 102 W., Sixth Principal Meridian, Wyoming.

Except as indicated hereon, the lotting and areas are as shown on the plat approved June 22, 1988; and the plat accepted January 7, 2010.

Survey executed by Olian T. Shockley, Cadastral Surveyor, beginning June 20, 2017, and completed July 20, 2017, pursuant to special instructions and assignment instructions dated April 6, 2017, for Group No. 969, Wyoming.



UNITED STATES DEPARTMENT OF THE INTERIOR
BUREAU OF LAND MANAGEMENT

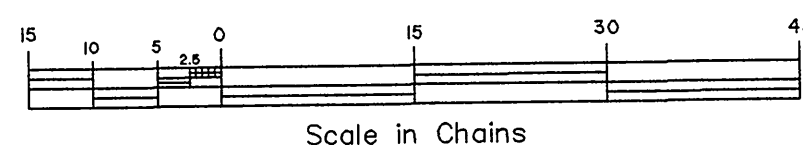
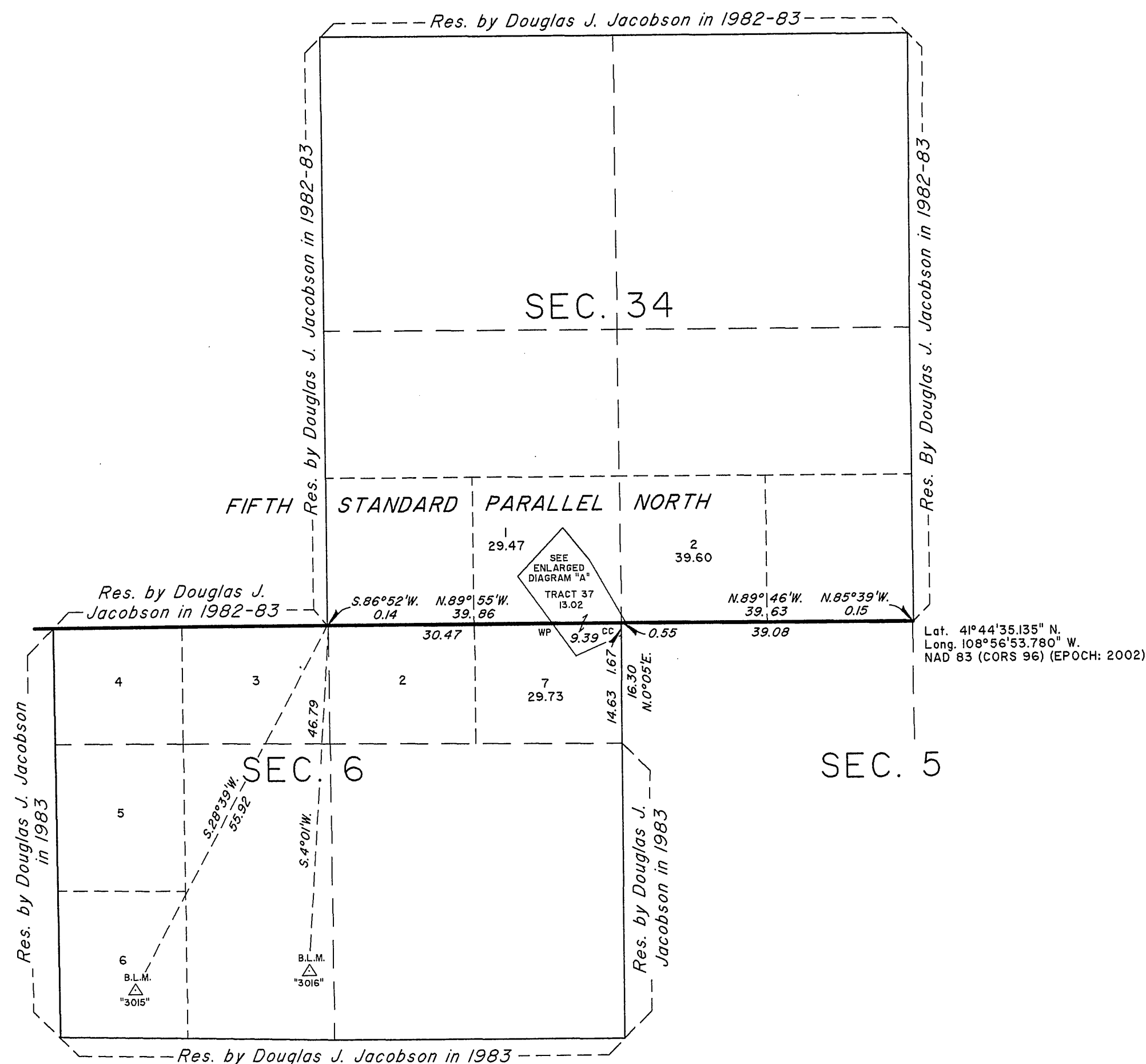
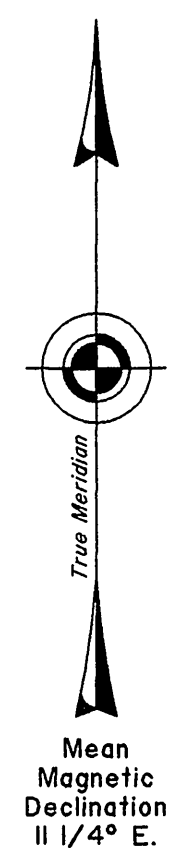
Cheyenne, Wyoming July 2, 2018

This plat is strictly conformable to the approved field notes, and the survey, having been correctly executed in accordance with the requirements of law and the regulations of this Bureau, is hereby accepted.

For the Director
[Signature]
Sonja S. Sparks
Chief Cadastral Surveyor for Wyoming

TOWNSHIPS 20 AND 21 NORTH, RANGE 102 WEST, OF THE SIXTH PRINCIPAL MERIDIAN, WYOMING.

DEPENDENT RESURVEY AND METES-AND-BOUNDS SURVEY OF TRACT 37



A history of surveys is contained in the field notes.

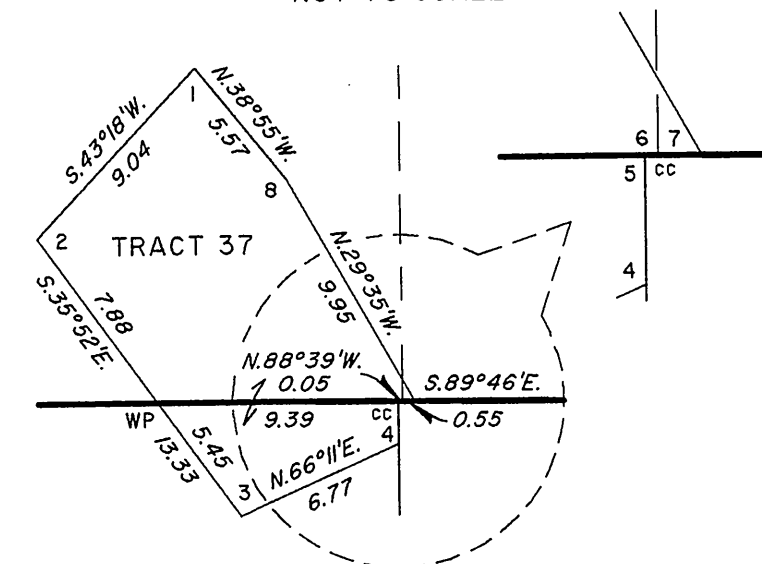
This plat represents the dependent resurvey of a portion of the Fifth Standard Parallel North through Range 102 West and a portion of the subdivisional lines, designed to restore the corners in their true original locations according to the best available evidence, T. 20 N., R. 102 W., and the metes-and-bounds survey of Tract 37 in Tps. 20 and 21 N., R. 102 W., Sixth Principal Meridian, Wyoming.

Except as indicated hereon, the lotting and areas are as shown on the plats approved June 22, 1988 and June 28, 1988

Survey executed by Olian T. Shockley, Cadastral Surveyor, beginning March 4, 2009, and completed May 7, 2009, pursuant to Special Instructions and Assignment Instructions dated February 17, 2009, for Group No. 800, Wyoming.

Note: Lines not showing bearings and distances were dependently resurveyed by Douglas J. Jacobson in 1982 and 1983.

ENLARGED DIAGRAM "A"
NOT TO SCALE



UNITED STATES DEPARTMENT OF THE INTERIOR
BUREAU OF LAND MANAGEMENT

Cheyenne, Wyoming

January 7, 2010

This plat is strictly conformable to the approved field notes, and the survey, having been correctly executed in accordance with the requirements of law and the regulations of this Bureau, is hereby accepted.

For the Director

John P. Lee
John P. Lee

Chief Cadastral Surveyor for Wyoming

TOWNSHIP 21 NORTH, RANGE 102 WEST, OF THE SIXTH PRINCIPAL MERIDIAN, WYOMING.
DEPENDENT RESURVEY

U.S.G.S.
"SUGARLOAF"

A history of surveys is contained in the field notes.

This plat represents the dependent resurvey of the Fifth Standard Parallel North, through R. 102 W., the north and east boundaries, and a portion of the subdivisional lines designed to restore the corners in their true original locations according to the best available evidence, T. 21 N., R. 102 W., Sixth Principal Meridian, Wyoming.

Except as indicated hereon, the lottings and areas are as shown on the plat approved January 7, 1908.

Survey executed by Douglas J. Jacobson, Cadastral Surveyor, beginning August 2, 1982, and completed May 25, 1983, pursuant to Special Instructions dated July 12, 1982, for Group No. 439, Wyoming.

UNITED STATES DEPARTMENT OF THE INTERIOR
BUREAU OF LAND MANAGEMENT

Cheyenne, Wyoming

June 22, 1988

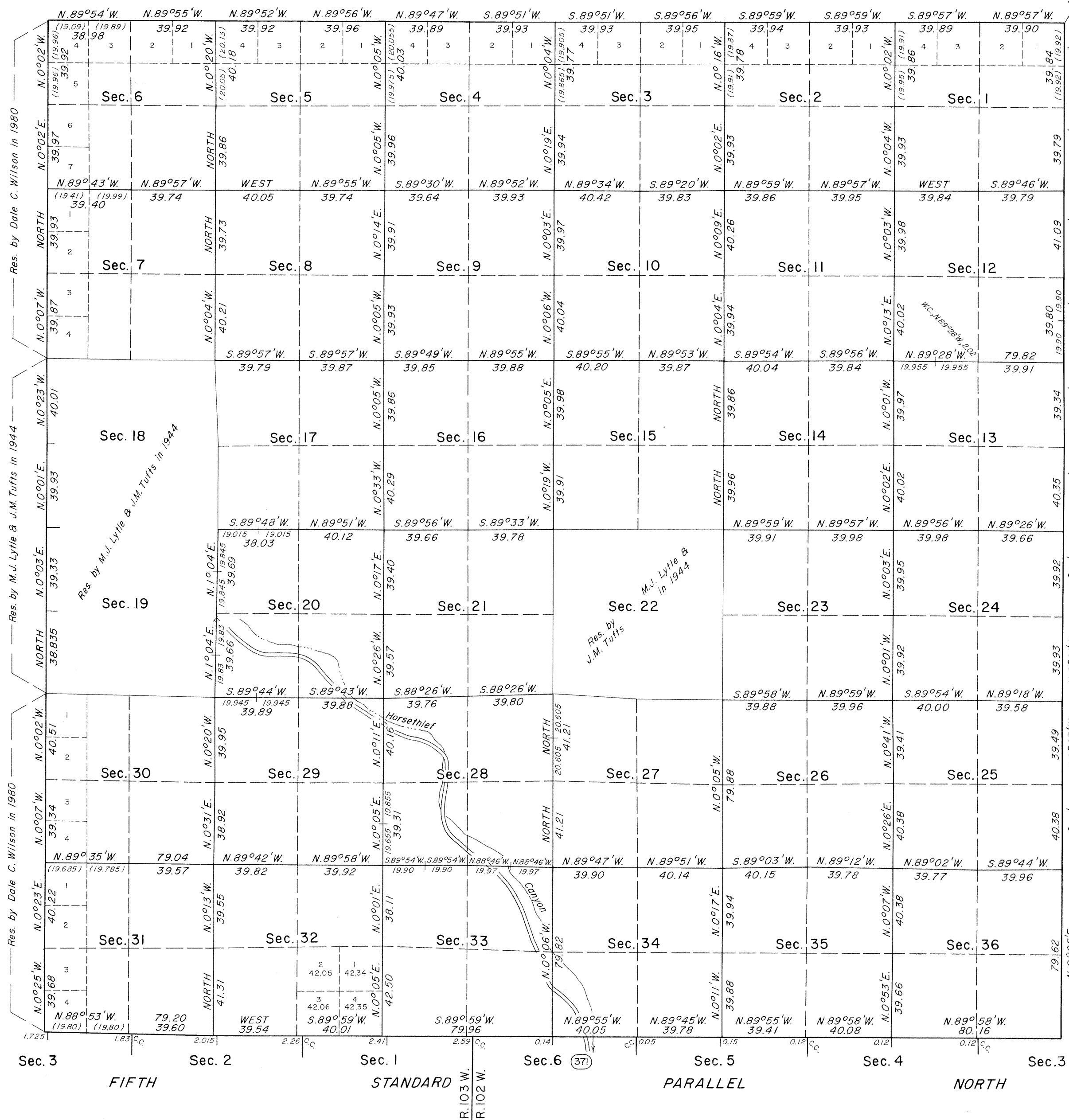
This plat is strictly conformable to the approved field notes, and the survey, having been correctly executed in accordance with the requirements of law and the regulations of this Bureau, is hereby accepted.

For the Director

Richard S. Pakes

Chief Cadastral Surveyor for Wyoming

Lat. 41°44'35.1" N.
Long. 108°53'49.6" W.



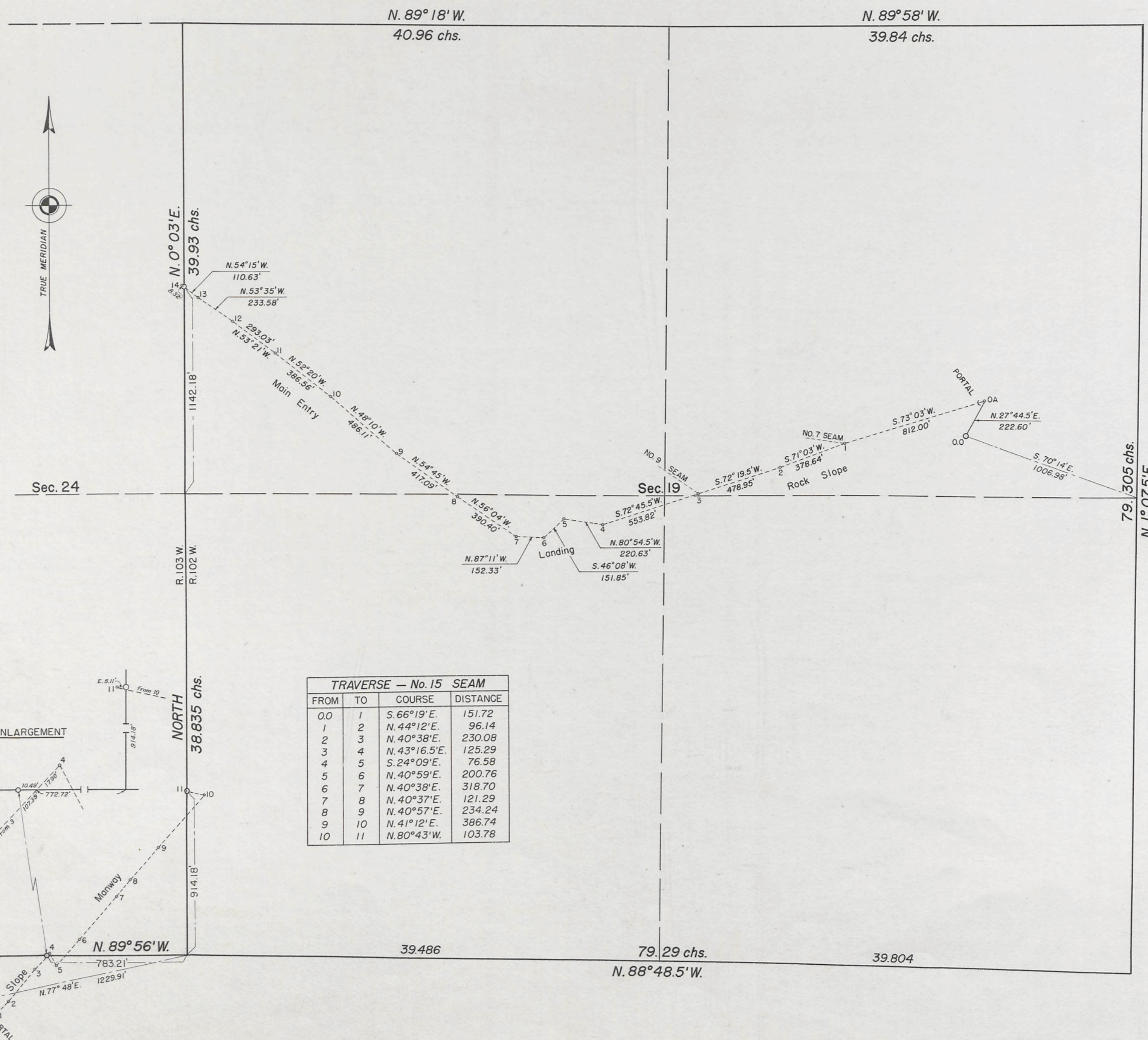
Mean magnetic declination
14° E.

TOWNSHIP No. 21 NORTH, RANGE No. 102 WEST OF THE SIXTH PRINCIPAL MERIDIAN, WYOMING.

TRAVERSE IN UNION PACIFIC COAL CO. No. 15 SEAM OF D. O. CLARK MINE

Scale: 1 Inch = 400 Feet

SHEET 5 of 5 SHEETS



MEMORANDUM

Partial survey of No. 15 Seam of the Union Pacific Coal Company D. O. Clark Mine and establishment of underground monuments in the workings on the south and east boundaries of section 24, T. 21 N., R. 103 W., executed by Marvin J. Lytle, Associate Cadastral Engineer, and John M. Tufts, Cadastral Engineer, May 13-June 12, 1944, under Special Instructions for Group No. 200, Wyoming, dated October 6, 1943, and authorized by General Land Office memorandum "E" dated August 13, 1943. Also executed under these Special Instructions is a dependent resurvey of the boundaries of sections 18 and 19, T. 21 N., R. 102 W.; reference is made to Sheet No. 1 of this series of 5 sheets for the showing of same.

UNITED STATES DEPARTMENT OF THE INTERIOR
GENERAL LAND OFFICE

Denver, Colorado, July 3, 1945

This plat of the partial survey of the Union Pacific Coal Company No. 15 Seam of the D. O. Clark Mine in section 19, T. 21 N., R. 102 W., and sections 24 and 25, T. 21 N., R. 103 W., of the Sixth Principal Meridian, Wyoming, is strictly conformable to the field notes of the survey thereof which have been examined and approved.

[Signature]
Supervisor of Surveys

Washington, D. C., JAN. 29, 1946

The survey represented by this plat having been correctly executed in accordance with the requirements of law and the regulations of this office, is hereby accepted.

[Signature]
Assistant Commissioner

21-102

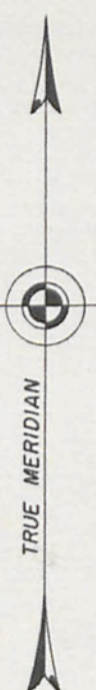
Rec'd Apr. 8, 1946

2441-G

M.J.L.

TRAVERSE IN UNION PACIFIC COAL CO. No. 9 SEAM OF D. O. CLARK MINE

SHEET 4 of 5 SHEETS



MEMORANDUM

Also executed under these Special Instructions is a dependent resurvey of the boundaries of sections 18 and 19; reference is made to Sheet No. 1 of this series of 5 sheets for the showing of same.

UNITED STATES DEPARTMENT OF THE INTERIOR
GENERAL LAND OFFICE

Denver, Colorado, July 3, 1945

This plat of the partial survey of the Union Pacific Coal Company No. 9 Seam of the D. O. Clark Mine in section No. 19, Township No. 21 North, Range No. 102 West of the Sixth Principal Meridian, Wyoming, is strictly conformable to the field notes of the survey thereof which have been examined and approved.

[Signature]
Supervisor of Surveys.

Washington, D. C., JANUARY 29, 1946

The survey represented by this plat having been correctly executed in accordance with the requirements of law and the regulations of this office, is hereby accepted.

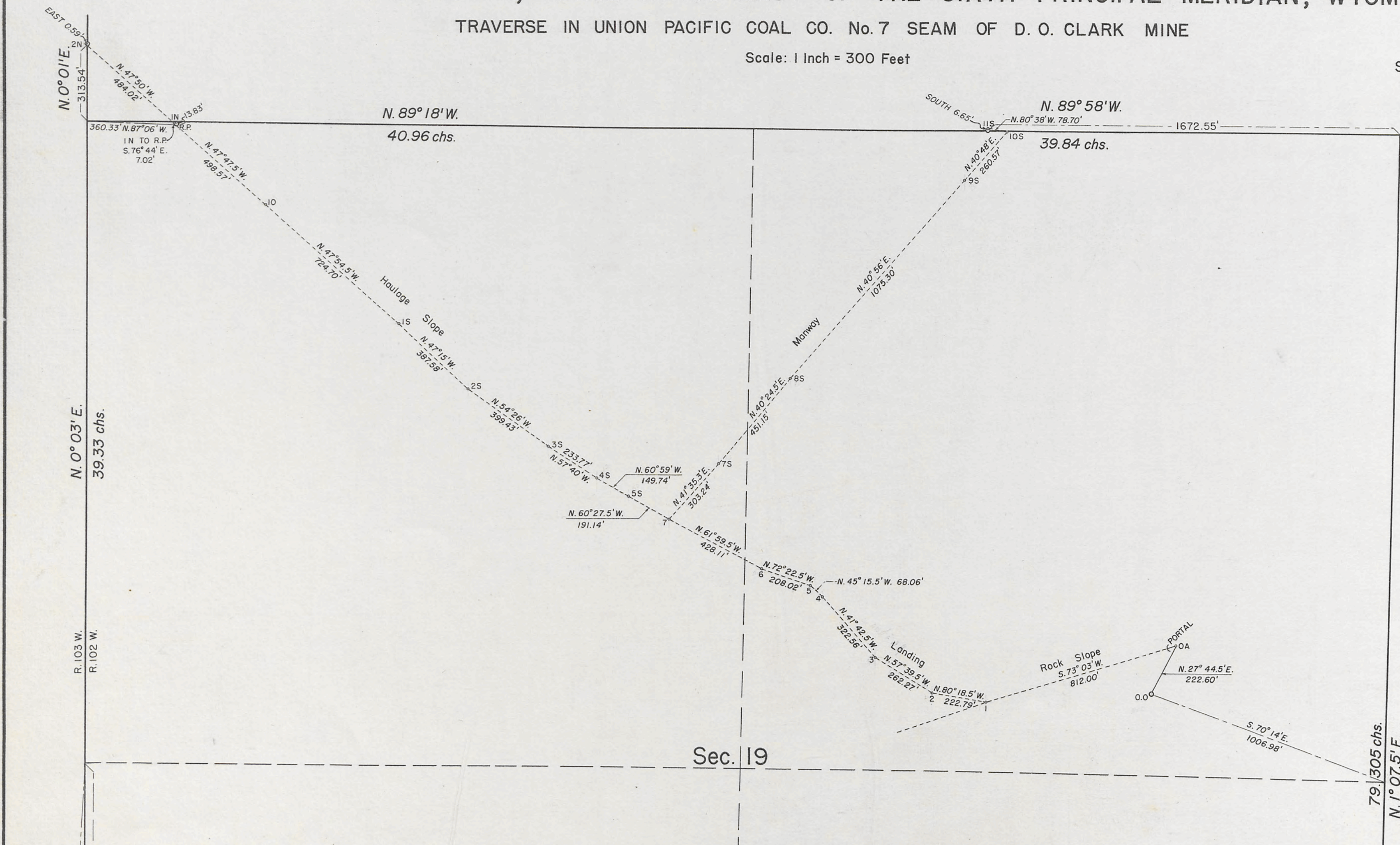
Joel David Wolfson
Assistant Commissioner.

TOWNSHIP No. 21 NORTH, RANGE No. 102 WEST OF THE SIXTH PRINCIPAL MERIDIAN, WYOMING.

TRAVERSE IN UNION PACIFIC COAL CO. No. 7 SEAM OF D. O. CLARK MINE

Scale: 1 Inch = 300 Feet

SHEET 3 of 5 SHEETS



MEMORANDUM

Partial survey in No. 7 Seam of Union Pacific Coal Company D. O. Clark Mine and establishment of underground monuments in the workings on the north and west boundaries of section 19 and the west boundary of section 18, executed by Marvin J. Lytle, Associate Cadastral Engineer, and John M. Tufts, Cadastral Engineer, May 13 - June 12, 1944, under Special Instructions for Group No. 200, Wyoming, dated October 6, 1943, and authorized by General Land Office memorandum "E" dated August 13, 1943. Also executed under these Special Instructions is a dependent resurvey of the boundaries of sections 18 and 19; reference is made to Sheet No. 1 of this series of 5 sheets for the showing of same.

UNITED STATES DEPARTMENT OF THE INTERIOR
GENERAL LAND OFFICE

Denver, Colorado, July 3, 1945

This plat of the partial survey of the Union Pacific Coal Company No. 7 Seam of the D. O. Clark Mine in sections 18 and 19, Township No. 21 North, Range No. 102 West of the Sixth Principal Meridian, Wyoming, is strictly conformable to the field notes of the survey thereof which have been examined and approved.

W. H. Horton Jr.
Supervisor of Surveys

Washington, D. C., JANUARY 29, 1946

The survey represented by this plat having been correctly executed in accordance with the requirements of law and the regulations of this office, is hereby accepted.

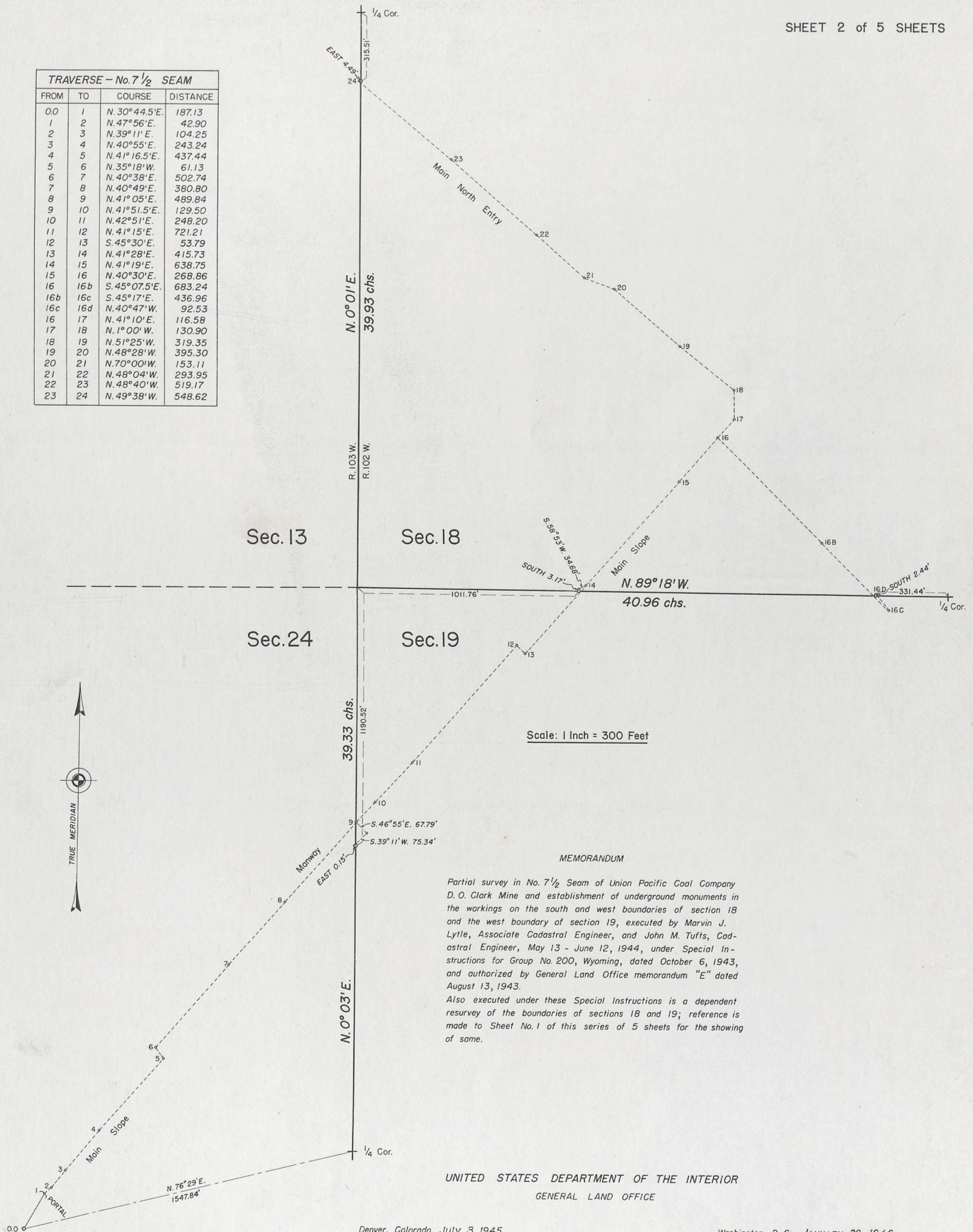
Joel David Wolfson
Assistant Commissioner

TOWNSHIP No. 21 NORTH, RANGE No. 102 WEST OF THE SIXTH PRINCIPAL MERIDIAN, WYOMING.

TRAVERSE IN UNION PACIFIC COAL CO. No. 7 1/2 SEAM OF D. O. CLARK MINE

SHEET 2 of 5 SHEETS

TRAVERSE - No. 7 1/2 SEAM			
FROM	TO	COURSE	DISTANCE
0.0	1	N. 30° 44.5' E.	187.13
1	2	N. 47° 56' E.	42.90
2	3	N. 39° 11' E.	104.25
3	4	N. 40° 55' E.	243.24
4	5	N. 41° 16.5' E.	437.44
5	6	N. 35° 18' W.	61.13
6	7	N. 40° 38' E.	502.74
7	8	N. 40° 49' E.	380.80
8	9	N. 41° 05' E.	489.84
9	10	N. 41° 51.5' E.	129.50
10	11	N. 42° 51' E.	248.20
11	12	N. 41° 15' E.	721.21
12	13	S. 45° 30' E.	53.79
13	14	N. 41° 28' E.	415.73
14	15	N. 41° 19' E.	638.75
15	16	N. 40° 30' E.	268.86
16	16b	S. 45° 07.5' E.	683.24
16b	16c	S. 45° 17' E.	436.96
16c	16d	N. 40° 47' W.	92.53
16	17	N. 41° 10' E.	116.58
17	18	N. 1° 00' W.	130.90
18	19	N. 51° 25' W.	319.35
19	20	N. 48° 28' W.	395.30
20	21	N. 70° 00' W.	153.11
21	22	N. 48° 04' W.	293.95
22	23	N. 48° 40' W.	519.17
23	24	N. 49° 38' W.	548.62



W. H. H. H.
Supervisor of Surveys

Joel David Wolfson
Assistant Commissioner.

21-102

Recd Apr 8, 1946.

2441-D

Access 6383

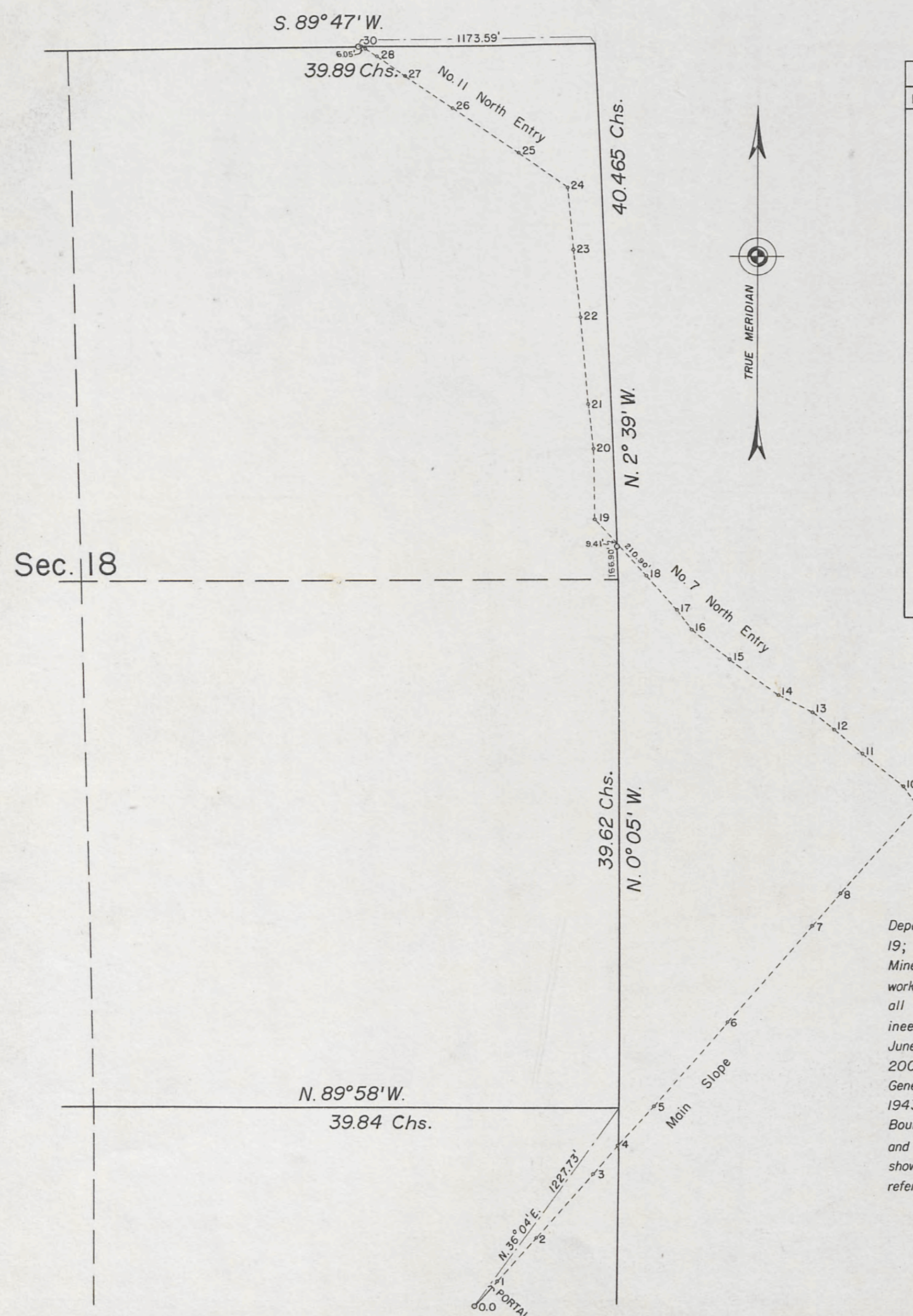
RCM

M.J.L.

TOWNSHIP No. 21 NORTH, RANGE No. 102 WEST OF THE SIXTH PRINCIPAL MERIDIAN, WYOMING.

DEPENDENT RESURVEY OF SECTIONS 18 AND 19.

SHEET 1 of 5 SHEETS



TRAVERSE - "D" MINE			
FROM	TO	COURSE	DISTANCE
0.0	1	N. 42° 09.5' E.	168.90
1	2	N. 41° 42' E.	297.75
2	3	N. 41° 43' E.	425.20
3	4	N. 41° 21' E.	187.07
4	5	N. 41° 37' E.	265.00
5	6	N. 41° 40' E.	555.26
6	7	N. 41° 45' E.	630.87
7	8	N. 41° 42' E.	212.51
8	9	N. 41° 34' E.	580.23
9	10	N. 35° 03' W.	123.25
10	11	N. 51° 57' W.	258.75
11	12	N. 50° 31' W.	184.50
12	13	N. 51° 07' W.	141.30
13	14	N. 63° 24' W.	188.88
14	15	N. 53° 39' W.	300.22
15	16	N. 52° 56' W.	243.30
16	17	N. 32° 03' W.	119.87
17	18	N. 43° 40' W.	233.48
18	19	N. 42° 25' W.	377.53
19	20	N. 1° 45' W.	352.12
20	21	N. 5° 58' W.	226.83
21	22	N. 5° 29' W.	429.46
22	23	N. 6° 04' W.	341.53
23	24	N. 5° 20' W.	312.52
24	25	N. 54° 38' W.	300.90
25	26	N. 55° 23' W.	400.93
26	27	N. 56° 09' W.	281.87
27	28	N. 55° 16' W.	172.37
28	29	N. 56° 59' W.	68.85
29	30	N. 57° 00' W.	25.17

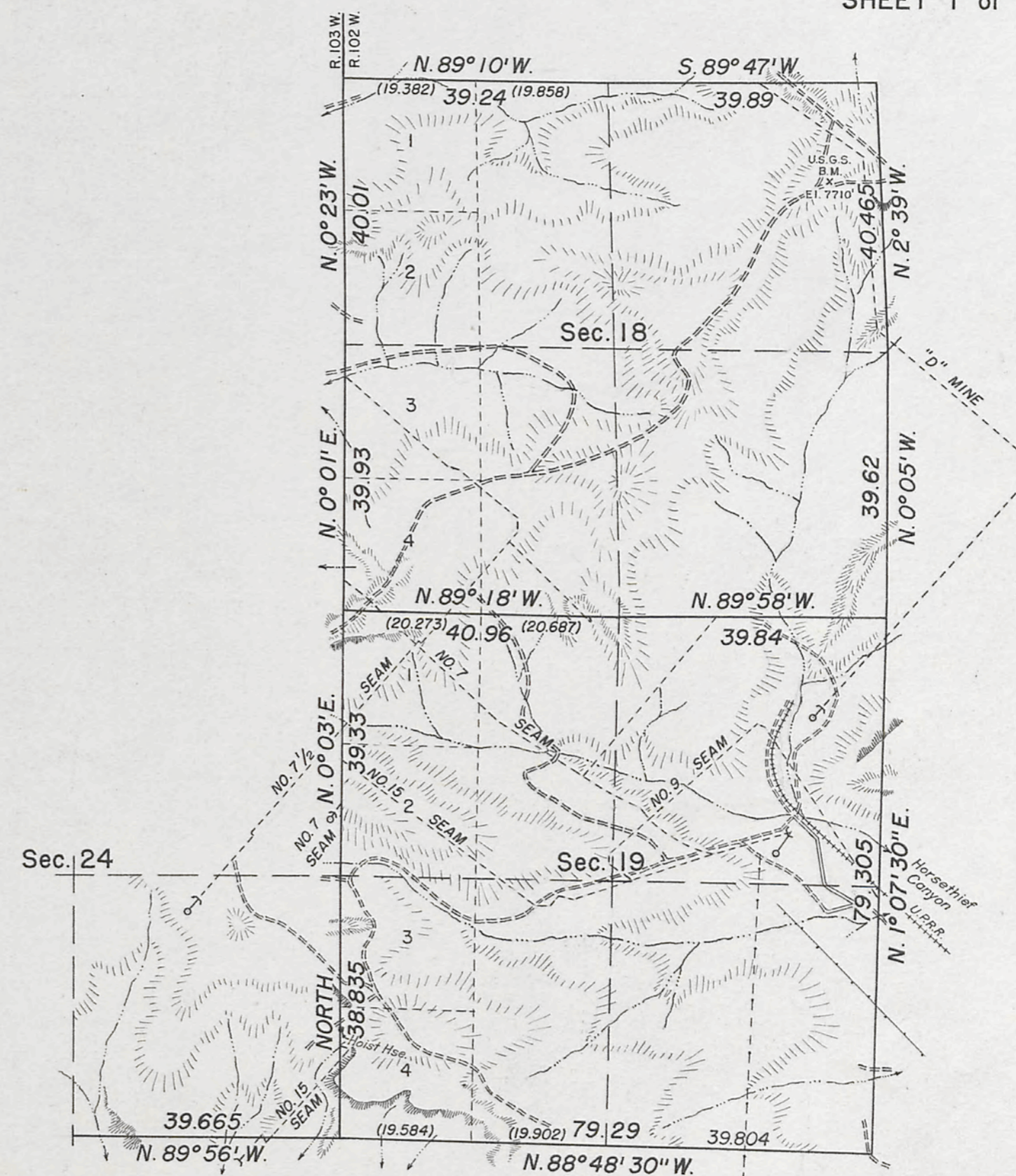
MEMORANDUM

Dependent resurvey of the boundaries of sections 18 and 19; partial survey of Union Pacific Coal Company "D" Mine and establishment of underground monuments in the workings on the north and east boundaries of section 18; all executed by Marvin J. Lytle, Associate Cadastral Engineer, and John M. Tufts, Cadastral Engineer, May 13 - June 12, 1944, under Special Instructions for Group No. 200, Wyoming, dated October 6, 1943 and authorized by General Land Office memorandum "E" dated August 13, 1943.

Boundaries of sections 18 and 19 resurveyed by Johnson and Jaekel, Deputy Surveyors, in 1906 and 1907 as shown upon the plat approved January 7, 1908, to which reference is made for the showing of the areas.

TRAVERSE IN UNION PACIFIC COAL CO. "D" MINE

Scale: 1 Inch = 500 Feet



SECTIONS 18 AND 19

Scale: 1 Inch = 20 Chains

INDEX

SHEET	No. 1	"D" Mine
"	2	7 1/2 Seam
"	3	7 "
"	4	9 "
"	5	15 "

UNITED STATES DEPARTMENT OF THE INTERIOR
GENERAL LAND OFFICE

Denver, Colorado, July 3, 1945

This plat of Township No. 21 North, Range No. 102 West of the Sixth Principal Meridian, Wyoming, is strictly conformable to the field notes of the survey thereof which have been examined and approved.

W. H. H. H.
Supervisor of Surveys.

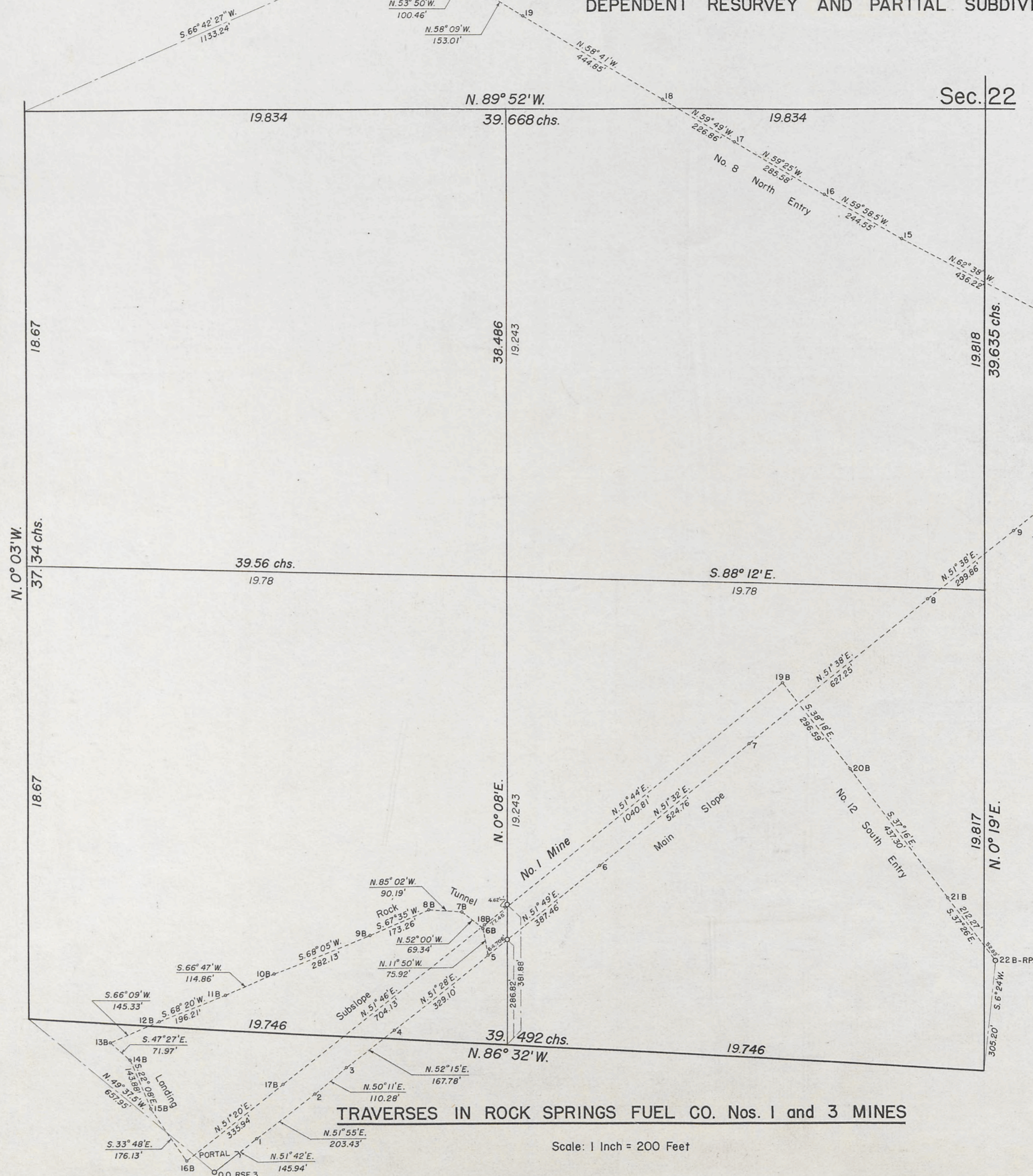
Washington, D. C., JANUARY 29, 1946

The survey represented by this plat having been correctly executed in accordance with the requirements of law and the regulations of this office, is hereby accepted.

Joel David Wolfson
Assistant Commissioner.

RANGE No. 102 WEST OF THE SIXTH PRINCIPAL MERIDIAN, WYOMING.

DEPENDENT RESURVEY AND PARTIAL SUBDIVISION OF SECTION 22.

[illegible]

Latitude, $41^{\circ}46'20''N$. Longitude, $108^{\circ}57'20''W$. SECTION 22
Scale: 1 Inch = 20 Chains

MEMORANDUM

Dependent resurvey of the boundaries and survey of the partial subdivision of section 22; limited survey of Rock Springs Fuel Company Nos. 1 and 3 Mines and establishment of underground monuments in their workings; all executed by Marvin J. Lytle, Associate Cadastral Engineer, and John M. Tufts, Cadastral Engineer, July 3 - 10, 1944, under Special Instructions for Group No. 200, Wyoming, dated October 6, 1943 and authorized by General Land Office memorandum "E" dated August 13, 1943. Boundaries of section 22 resurveyed by Johnson and Jaeckel, Deputy Surveyors, in 1906 and 1907 as shown upon the plat approved January 7, 1908, to which reference is made for the showing of the areas.

UNITED STATES DEPARTMENT OF THE INTERIOR
GENERAL LAND OFFICE

Denver, Colorado, July 10, 1945

This plat of the limited survey of the Rock Springs Fuel Company Nos. 1 and 3 Mines and the resurvey and partial subdivision of section 22, Township No. 21 North, Range No. 102 West of the Sixth Principal Meridian, Wyoming, is strictly conformable to the field notes of the survey thereof which have been examined and approved.

C. Horton
Supervisor of Surveys.

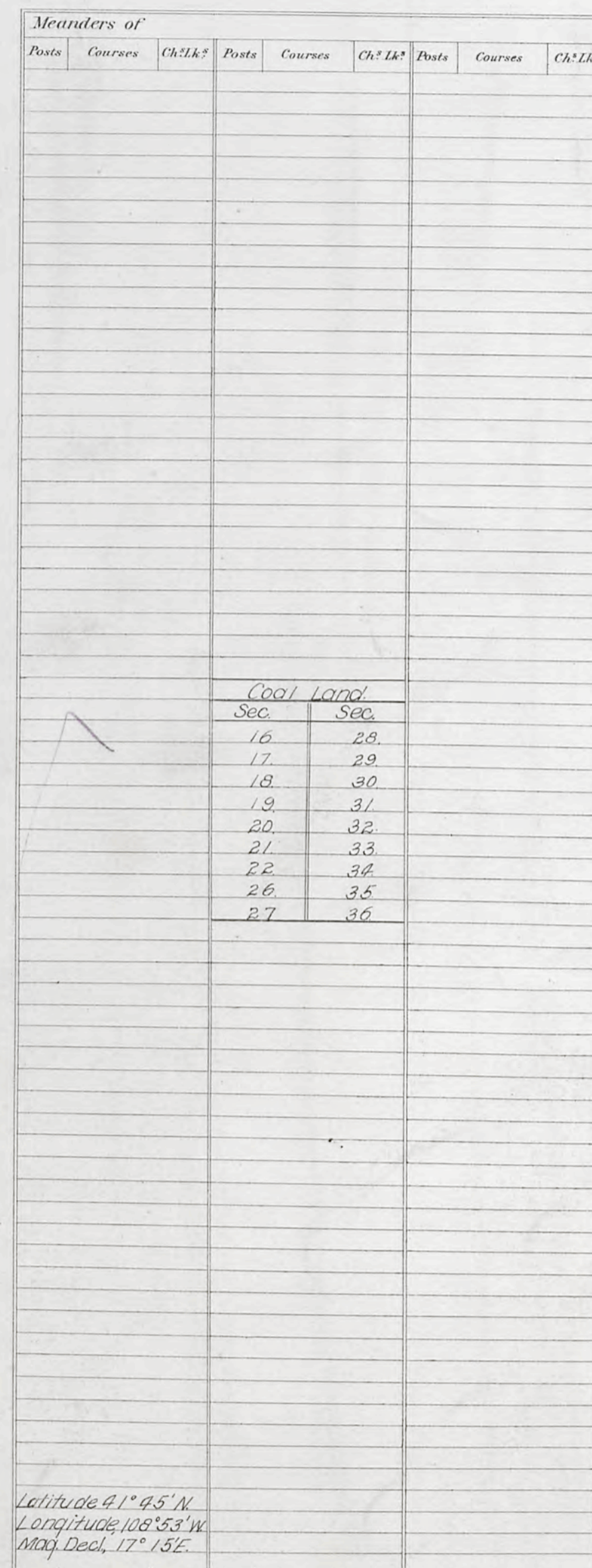
Washington, D. C., JANUARY 29, 1946

The survey represented by this plat having been correctly executed in accordance with the requirements of law and the regulations of this office, is hereby accepted.

Carl David Wolfson
Assistant Commissioner.

(4-675a)

G f F e E d D c C b B a A



Surveys Designated	By Whom Surveyed	Date of Contract	Amount of Surveys M. Ch ^s Lk ^s	When Surveyed
Resurvey Township lines Resurveyed Subdivisions	Johnson & Jaeger	314 July 12, 1906	23 79 20	Aug 22-Sept 26 1906
	" " "	" " " "	59 78 74	Oct 9-30, 1906 and Nov 25-29, 1907

Scale 40 Chains to an inch.

Resurvey of
The above Map of Township N. 21 North, of Range N. 102 West of the
Sixth Principal Meridian, Wyoming, is strictly conformable to the field
notes of the survey thereof on file in this Office, which have been examined and approved.
Surveyor General's Office, *Asaph B. Brown*
Cheyenne Wyoming, Jan. 7, 1908. *Sur. Gen.*

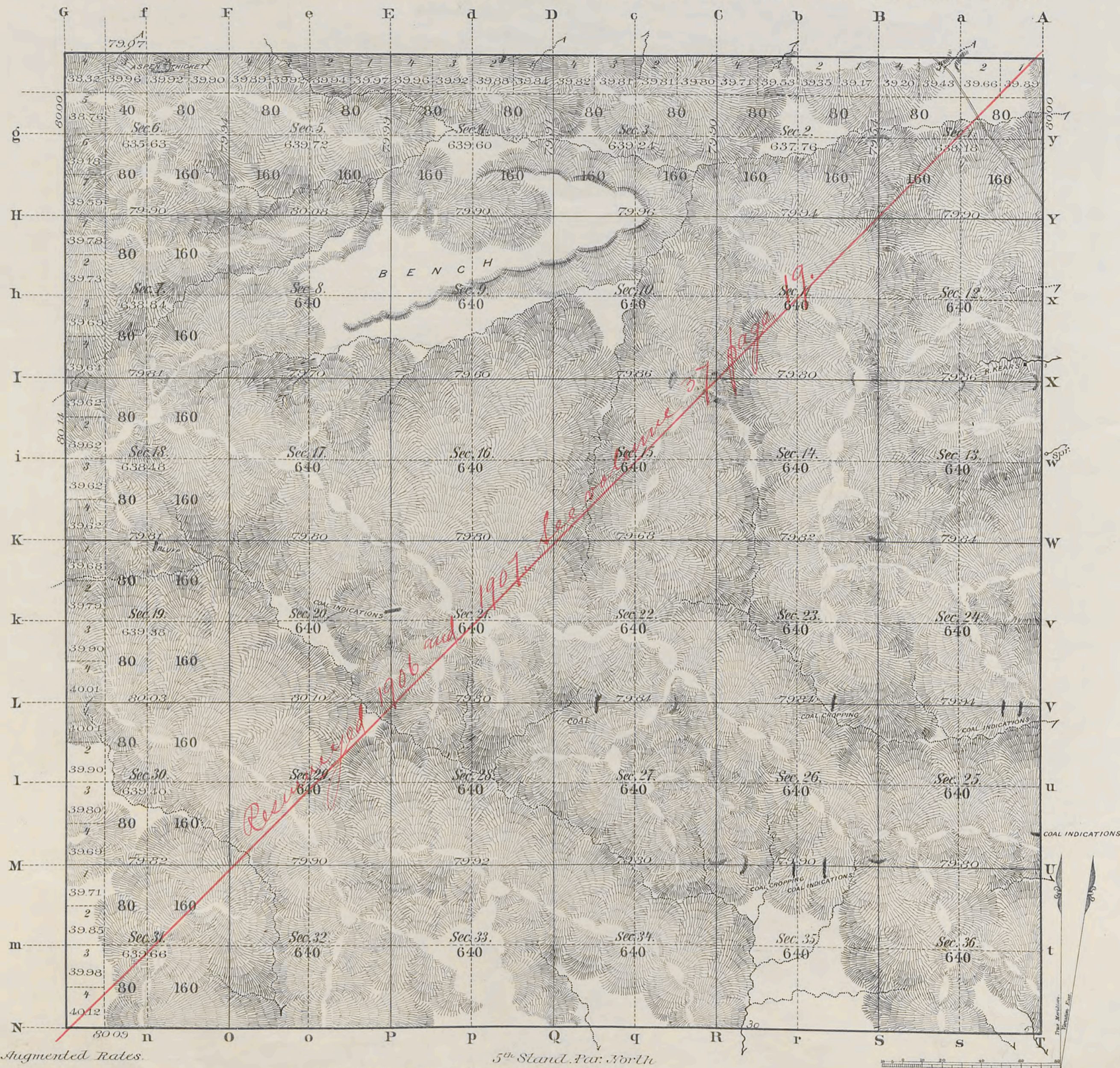
Accepted by the Hon. Commissioner in his letter "E," April 16, 1908. Duplicate plat forwarded to Evanston Land Office, April 25, 1908.

21-102

2441-A

4231

TOWNSHIP N° 21 NORTH, RANGE N° 102 WEST of the 6th Principal MERIDIAN.



All Augmented Rates.

5th Stand. Far. North

Total number of Acres. 22,025.99

Surveys Designated	By Whom Surveyed	Date of Contract	Amount of Surveys M ² Ch. Lk ²	When Surveyed	Magnetic Declination
Township line	E.W. Weisshaar, Jr.	Oct. 11 th 1883	5 79 7	Apr. 3 rd 1884	
Subdivisions			59 75 3	June 9-17 1884	16° 48' 16.54" E.
Connections					
N. Township line	C.A. Honey	May 29 th 1882	6 0 0	June 25 th 1883	
Ret. "	E.W. Weisshaar, Jr.	Oct. 11 th 1883	1 0 14	March 25 th 1883	
5 th Stand. P.N.	W.O. Downey	June 21 st 1873	6 0 0	Aug. 3 rd 1873	
Ret. "	E.A. LaPere	June 20 th 1882	2 17 33	March 8, 1883	
	G.N. Carson	Oct. 10 th 1883	3 62 53	10 1884	

The above Map of Township N° 21 North, Range N° 102 West of the 6th Principal Meridian Wyoming Territory is strictly conformable to the field notes of the survey thereof on file in this Office, which have been examined and approved

Surveyor General's Office

Cheyenne, Wyoming

Apr. 2nd 1885

John A. Hill
Dir. Gen.

2441

21-102

4853

RESURVEY TOWNSHIP EXTERIORS

Scale: 1 inch = 160 Chains.

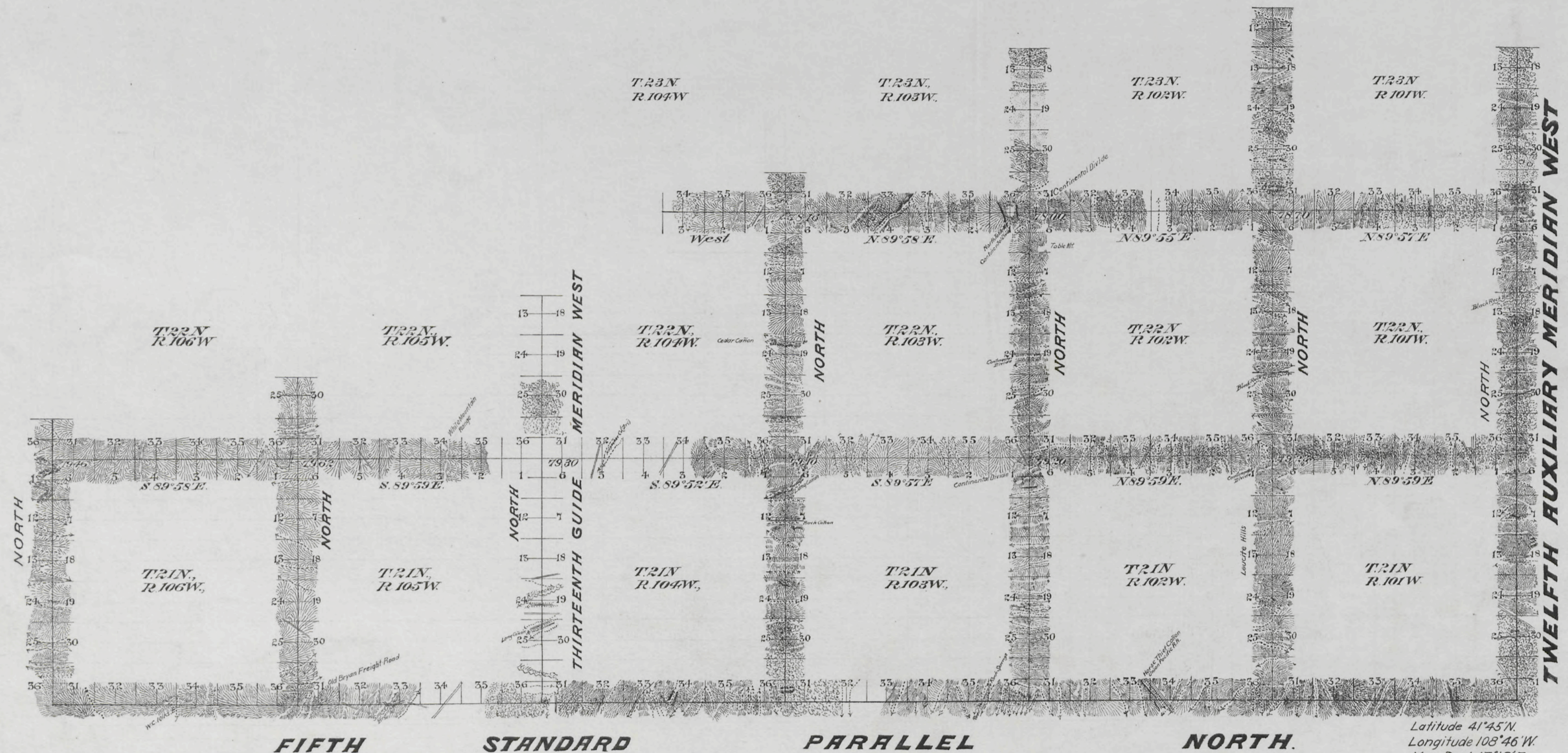


Table of Mileage				
Surveys Designated	Mts	Cts	Lks	When Surveyed
Standard lines resurveyed	62	00	00	Aug. 16-28, 1906
Township " "	117	70	77	Aug. 18-Nov. 25, 1906.

This Plat
of the Resurvey of
the Fifth Standard Parallel North through Ranges 101, 102, 103, 104, 105 and 106 West; the Twelfth Auxiliary Meridian West through Tps. 21, 22 and 23 North between Ranges 100 and 101 West; the Thirteenth Guide Meridian West through Tps. 21 and 22 North between Ranges 104 and 105 West; the North and West boundaries of Tps. 21 and 22 North, Ranges 101, 102 and 103 West; the West boundaries of Tps. 23 North, Ranges 101, 102 and 103 West; the North boundaries of Tps. 21 and 22 North, Range 104 West; the North and West boundaries of Tps. 21 North, Ranges 105 and 106 West and the West boundaries of Tps. 22 North, Ranges 105 and 106 West of the Sixth Principal Meridian, Wyoming, is strictly conformable to the field notes of the resurvey thereof by Frank M. Johnson and Herman Jaekel, U.S. D.S., under their Contract No. 314, dated July 12, 1906, which have been examined, approved and filed in this office.

U.S. Surv. Gen'l's Office
Cheyenne, Wyoming
January 7, 1908.

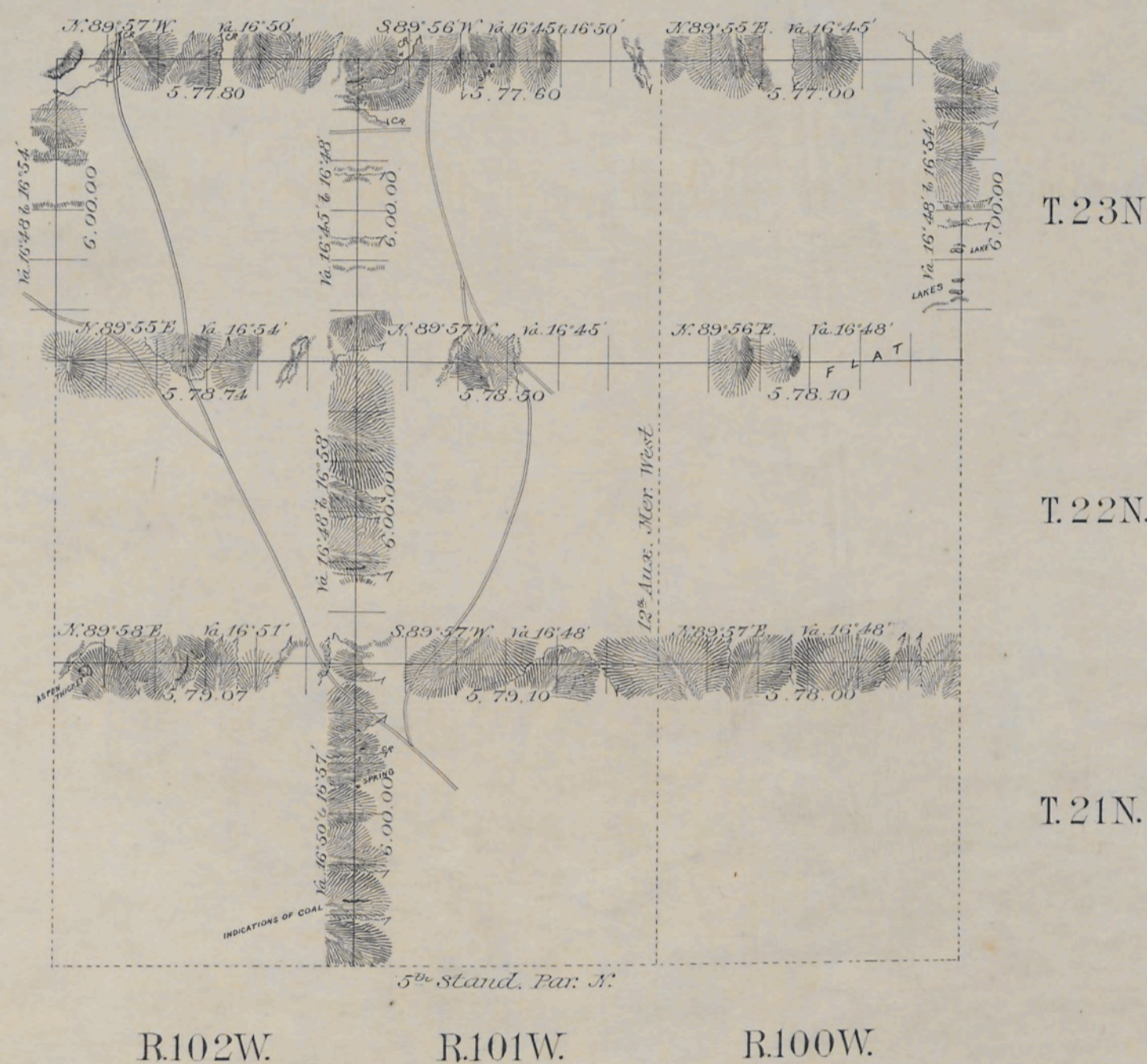
Alphons P. Hoffman
U.S. Surv. Gen'l.

Latitude 41° 45' N.
Longitude 108° 46' W.
Mag. Decl. 17° 18' E.

C. W. S., A. M. E.

EXTERIOR LINES.

Scale 3 miles to 1 inch. Magnetic Var: East.



Regular Rates 34^{mls} 47^{chs} 77^{cts}
 Augmented " 49^{mls} 16^{chs} 14^{cts}

Surveys Designated.	By Whom Surveyed.	Date of Contract.	Amount of Surveys mcs	When Surveyed.
Township Lines	F.W. Weisshaar, Jr.	Oct. 11 th 1883	83 63 91	Mar. 31-Apr. 15, 1884

I hereby certify that the above diagram of the Exterior Lines of Tps 21, 22 & 23 N. R's 100, 101 & 102 W. of the 6th Principal Meridian, Wyoming Territory, is strictly conformable to the field notes of the survey thereof on file in this office which have been examined and approved.
 Surveyor General's Office,
 Cheyenne Wyoming Apr. 2nd 1885

John H. McAdams
 Surveyor General

(27)
Indexed
Accession no. 3790

EXTERIOR LINES

Magnetic Variation East. Scale 3 miles to 1 inch



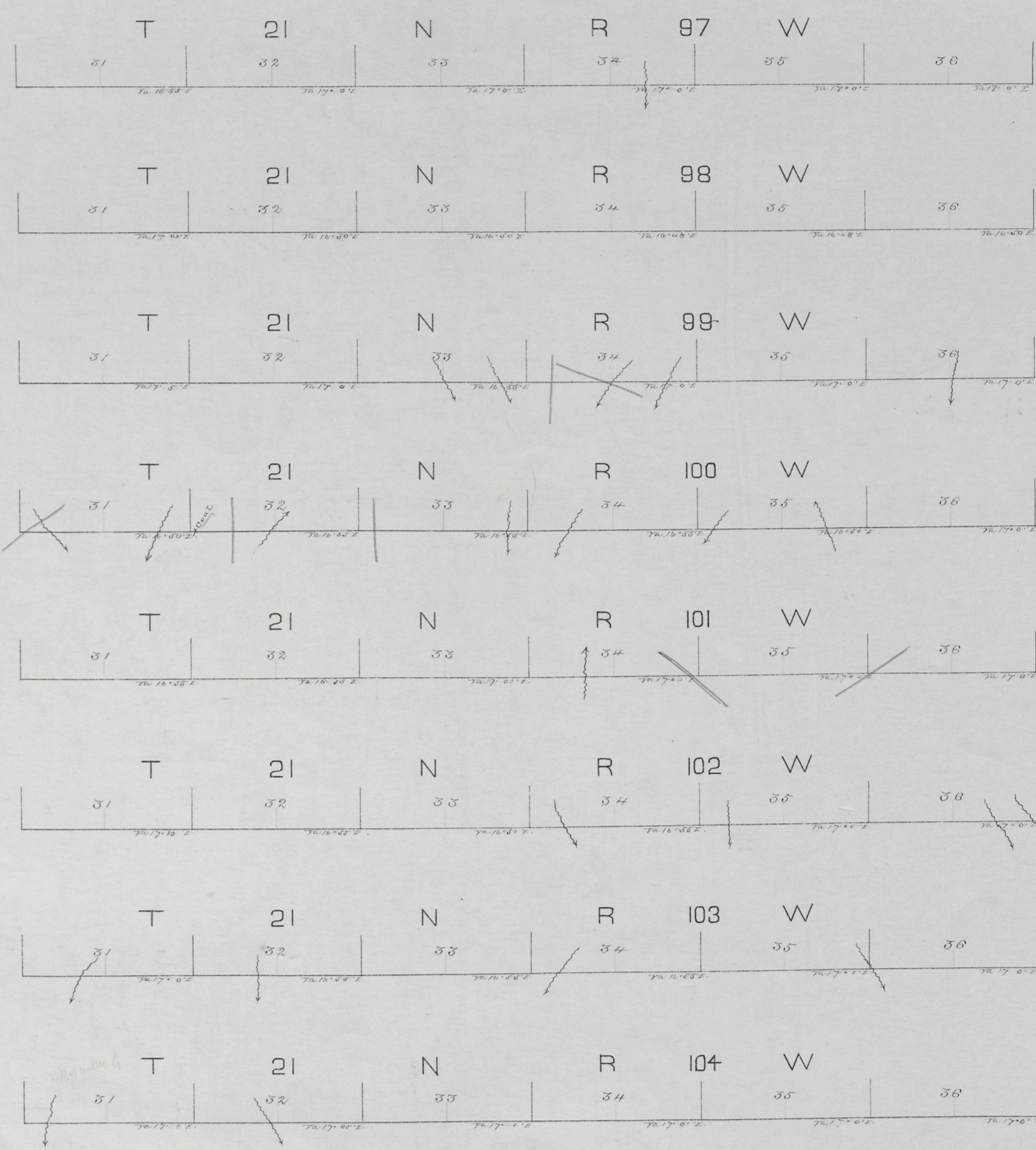
Surveys Designated	By Whom Surveyed	Date of Contract	Amount of Surveys Acres	When Surveyed
Exterior Lines	C.A. Honey	May 29 th 1882	95 70 95	June 25-July 10 1883

I hereby certify that the above diagram of the exterior lines of Tps 21 & 22 N. Rgs 103 to 106 inclusive. West of the 6th R.M. Wyo. Ter. is strictly conformable to the field notes of the survey thereof on file in this office which have been examined and approved

Surveyor General's Office
Cheyenne Wyoming
April 29th 1884 } *Edw. C. Davis* Sur. Genl.

(6)
Indexed

FIFTH STANDARD PARALLEL NORTH.



Survey Designated By Whom Surveyed	Date of Contract	Cont. of Survey	When Surveyed
5th Stand. Par. 21 N 24 O. Downey	June 21st 1873	43.00.00	July 29-Aug 3. 1873

I hereby certify that the above Diagram of the 5th Standard Parallel North, between the 12th and 13th Guide Meridians, West of the 6th Principal Meridian in Wyoming Territory, is strictly conformable to the field notes of the Survey thereof on file in this Office, which have been examined and approved.

Surveyor General's Office,
Cheyenne Wyo. Nov. 21. 1873.

Silas Reed
Sur. Gen.