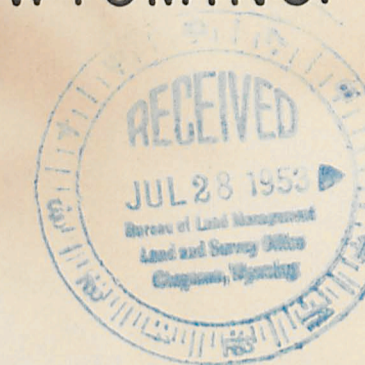


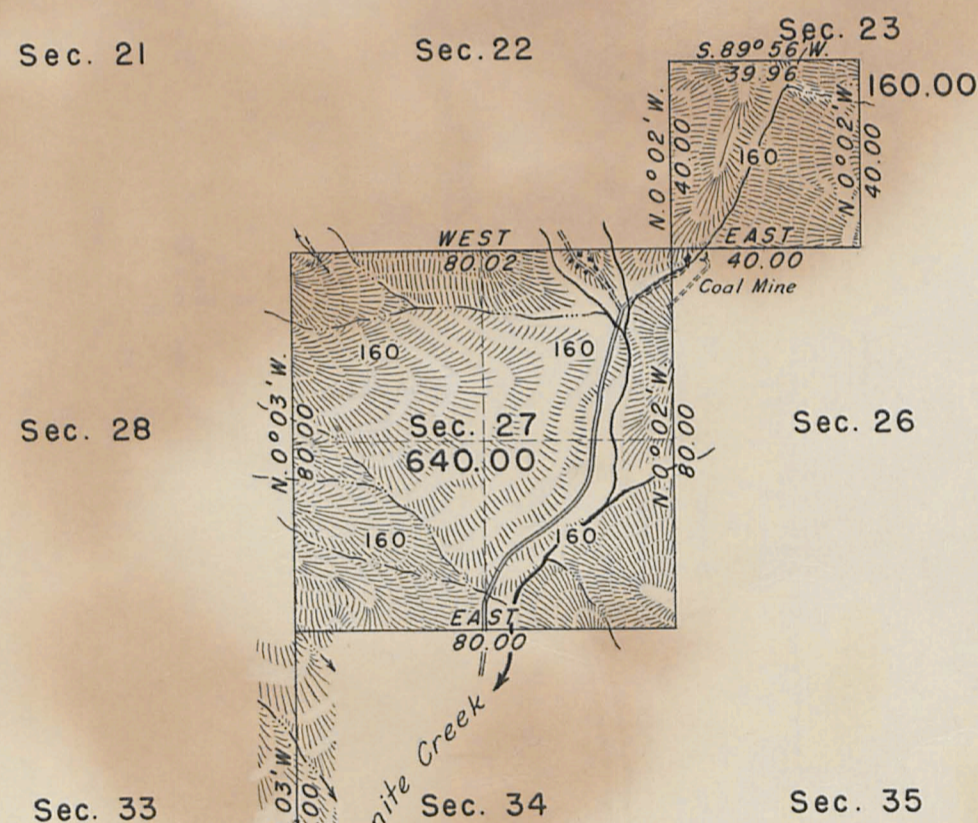
T. 39 N., R. 114 W., Sixth Principal Meridian, Wyoming, Field Note Links

Plat Accession Number(s)	Year(s) of Survey	Township Subdivision Plats
6546	1952	https://www.wy.blm.gov/cadastral/countyplats/teton/fieldnotes/t39nr114w_gp224fn.pdf

TOWNSHIP N° 39 NORTH, RANGE N° 114 WEST, OF THE SIXTH PRINCIPAL MERIDIAN, WYOMING.



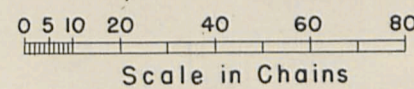
UN SURVEYED



Surveyed by Carpenter and Warner in 1893

Surveyed by Carpenter and Warner in 1893

Area Surveyed 800.00 Acres.



Latitude: 43° 17.2' N.
Longitude: 110° 31.8' W.

UNITED STATES
DEPARTMENT OF THE INTERIOR
BUREAU OF LAND MANAGEMENT
Washington, D. C., June 12, 1953

This plat is strictly conformable to the approved field notes, and the survey, having been correctly executed in accordance with the requirements of law and the regulations of this Bureau, is hereby accepted.

For the Administrator

Donald Clement
Assistant Chief, Division of
Cadastral Engineering

This plat represents an extension survey of a portion of the subdivisional lines in the SE 1/4 of the township.

The survey was executed September 29 to October 7, 1952 by Russell C. MacDonal, Cadastral Engineer, under Special Instructions for Group 224 Wyoming, dated January 31, 1951.

J.G.H.

43520