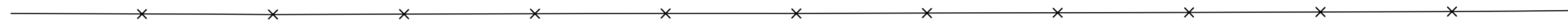


T. 39 N., R. 117 W., Sixth Principal Meridian, Wyoming, Field Note Links

Plat Accession Number(s)	Year(s) of Survey	Township Exterior Plats
4809	1902	https://www.wy.blm.gov/cadastral/countyplats/teton/fieldnotes/ext2876.pdf
4809	1902	https://www.wy.blm.gov/cadastral/countyplats/teton/fieldnotes/retext2876.pdf

TOWNSHIP 39 NORTH, RANGE 117 WEST OF THE SIXTH PRINCIPAL MERIDIAN, WYOMING.

INDEX TO CORNER REMONUMENTATION WITHOUT SURVEY



Sec. 6

Sec. 5

Sec. 4

Sec. 3

Sec. 2

Sec. 1

HES 125

HES 191

HES 197

Sec. 13

Sec. 24

Sec. 25

Sec. 36

NOT TO SCALE

LEGEND

Remonumented Corner as Indicated

Indexed

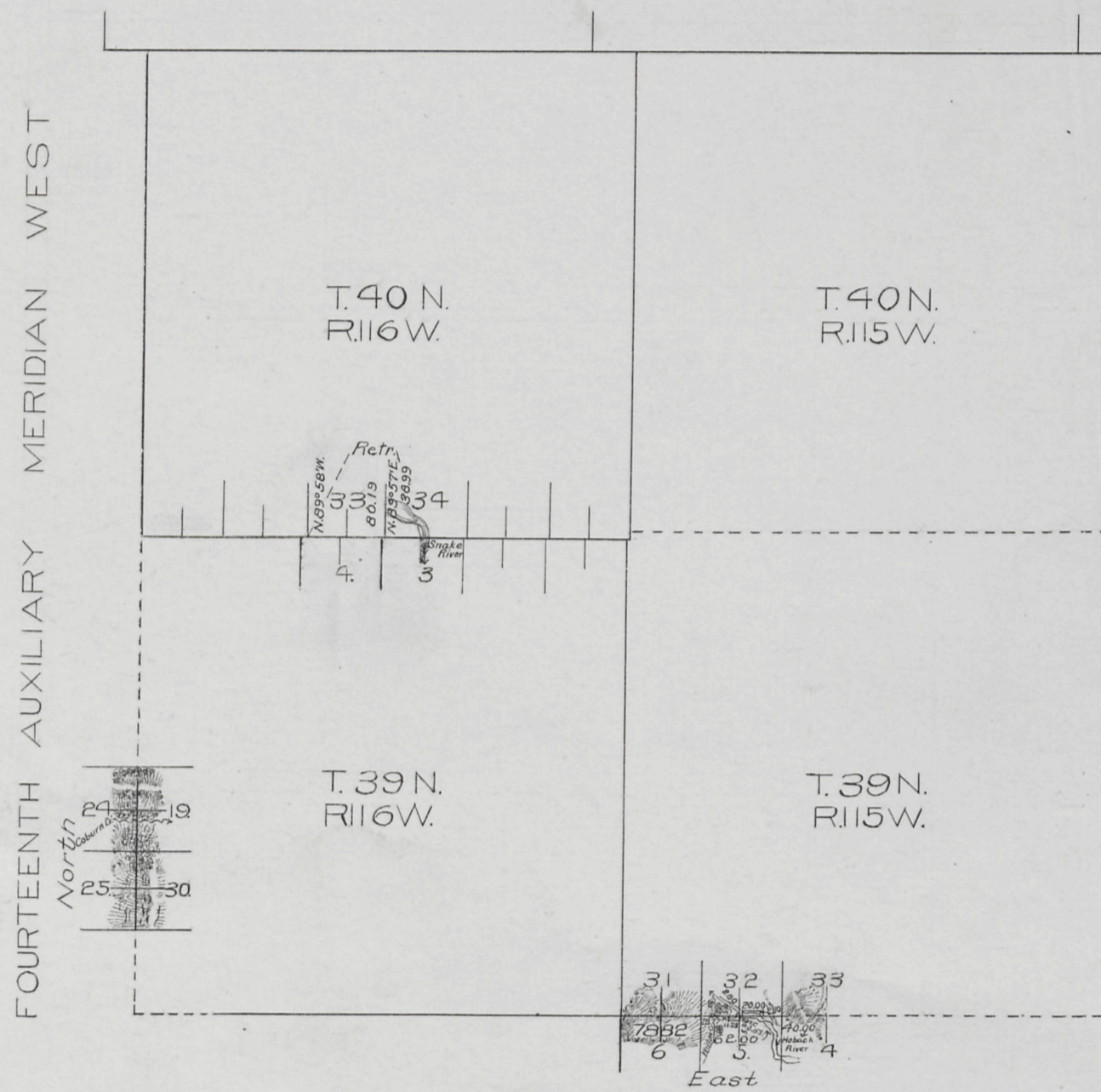
4857

TOWNSHIP EXTERIORS

Scale: 1 inch to 160 chains.

Table of Mileage

Surveys Designated	Amount	When Surveyed
Township Lines Surveyed	Mls. Chs. Lks. 4 38 82	August 12-24, 1907
" " Retraced	1 39 18	" 5-6 "



This Plat
of the
Fourteenth Auxiliary Meridian West
through a part of T. 39 N., R. 116 W.,
a part of the South Boundary of T. 39
N. R. 115 W. and the
Retracement of
a part of the South Boundary of T.
40 N., R. 116 W. of the Sixth Principal
Meridian
Wyoming
is strictly conformable to the field
notes of the survey thereof
by
Adrian J. Parshall U.S.D.S.
Under his
Contract N^o 324
dated April 12, 1907
which have been examined, approved
and filed in this office.
U.S. Surv. Gen'l's Office
Cheyenne, Wyoming.
February 14, 1908.

Alpheus P. Stanton
U.S. Surv. Gen'l.

35
Index

4809

TOWNSHIP EXTERIORS

Scale: 1 inch ≈ 160 chains.

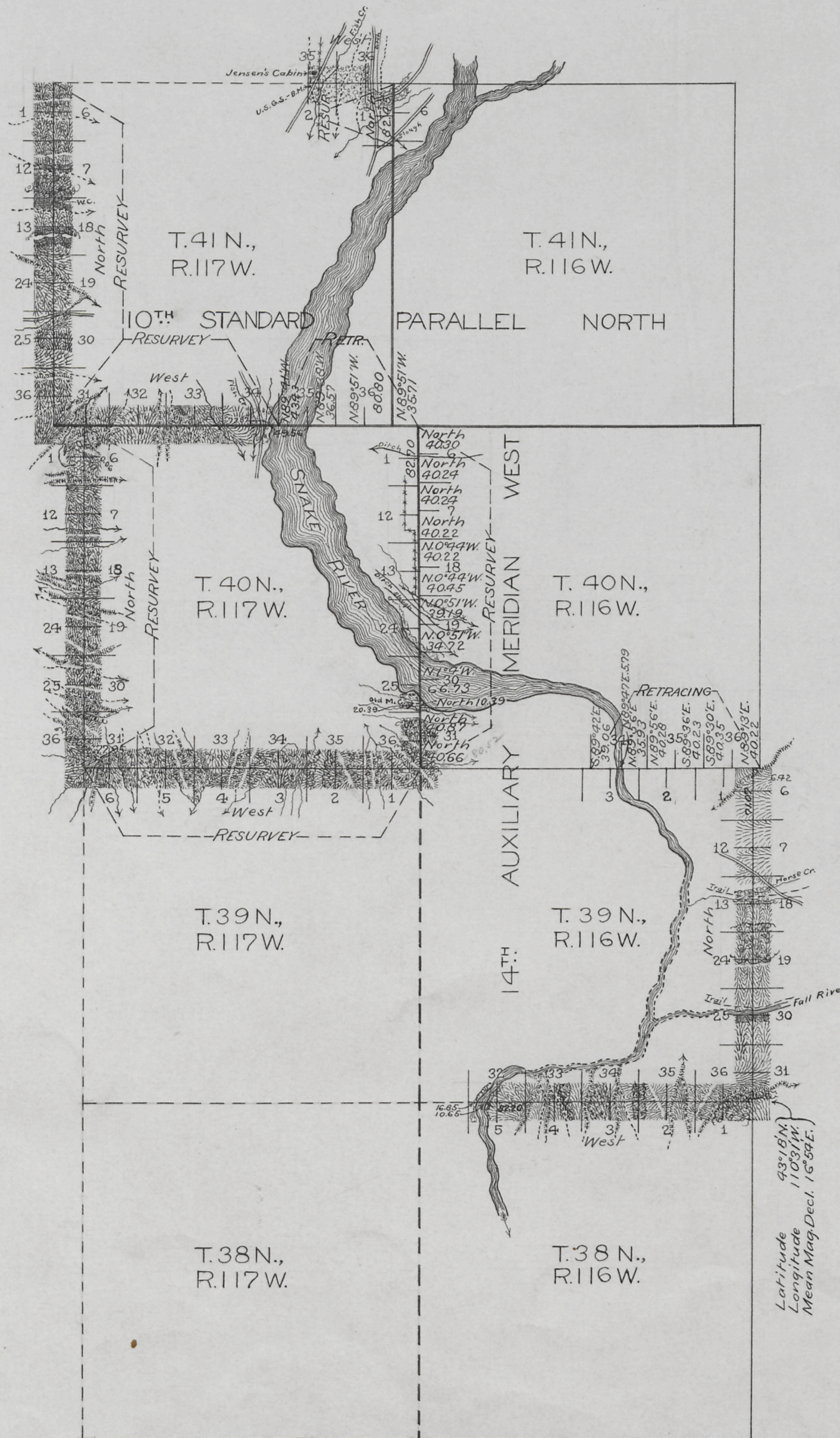


Table of Mileage

Surveys Designated	Amount Mls. Chs. Lks.	When Surveyed
Standard Lines Retraced	2 36 51	July 12, 1902
" " Resurveyed	11 5 15	" 3-17, "
Township " Retraced	3 1 86	" 1, "
" " Resurveyed	18 3 35	" 8-16, "
" " Surveyed	12 31 7	June 16-July 17, "
Connections	6 48	July 3-14, "

This Plat
of the
South and East boundaries of T. 39N., R. 116W.; and
a part of the North boundary of T. 41N., R. 117W.; the
Retracing of
The 10th Standard Parallel North through a part of
Rgs. 116 and 117W.; and a part of the South boundary
of T. 40N., R. 116W.; the
Resurvey of
The 14th Auxiliary Meridian West through T. 40N., and
a part of T. 41N.; a part of the 10th Standard Parallel
North through R. 117W.; the North boundary of
T. 39N., R. 117W.; the West boundary of T. 40N., R. 117W.;
and the West boundary of T. 41N., R. 117W. of the
6th Principal Meridian,
Wyoming,
is strictly conformable to the field notes of the survey thereof
by
Newell J. Burnham, U.S.D.S.,
under his
Contract N^o. 288,
dated June 25, 1901,
which have been examined, approved and filed in this office.
U.S. Surv. Gen'l's Office,
Cheyenne, Wyoming,
April 2, 1903

Alpheus P. Hanscom
U.S. Surv. Gen'l.

Latitude
Longitude
Mean Mag. Decl. 16 54 E.

2876

F.M.A.

F.M.A.

Surveys accepted by the Hon. Commissioner
in his letter "C", dated Aug. 27, 1903

T. 39 N., R. 117 W., Sixth Principal Meridian, Wyoming, Homestead Entry Survey Links

Plat Accession Number(s)	Year(s) of Survey	
		Homestead Entry Survey No. 125 (Sections 2 and 11)
5276	1915	https://www.wy.blm.gov/cadastral/homesteads/100-149/hes125.pdf
		Homestead Entry Survey No. 191 (Sections 11, 12, and 13)
5331	1920	https://www.wy.blm.gov/cadastral/homesteads/150-199/hes191.pdf
		Homestead Entry Survey No. 197 (Section 10)
5337	1920	https://www.wy.blm.gov/cadastral/homesteads/150-199/hes197.pdf