

## T. 41 N., R. 116 W., Sixth Principal Meridian, Wyoming, Field Note Links

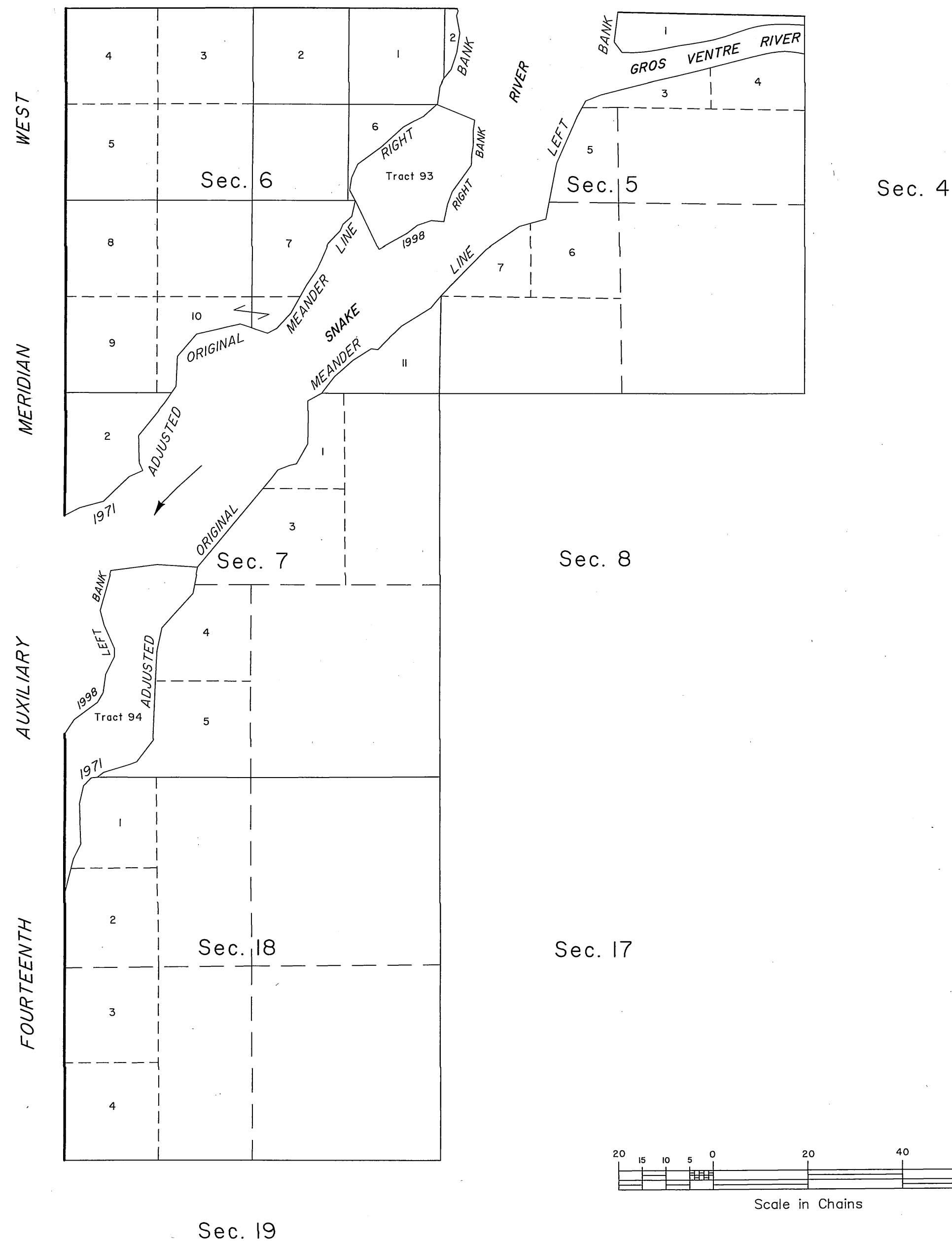
Plat Accession Number(s)	Year(s) of Survey	
Township Subdivision Plats		
8319; 8320	1998	<a href="https://www.wy.blm.gov/cadastral/countyplats/teton/fieldnotes/t41nr116w_gp652fn.pdf">https://www.wy.blm.gov/cadastral/countyplats/teton/fieldnotes/t41nr116w_gp652fn.pdf</a>
Group 275 metes and bounds descriptions of tracts		
7811	1987	<a href="https://www.wy.blm.gov/cadastral/countyplats/teton/fieldnotes/t41nr116w_mb.pdf">https://www.wy.blm.gov/cadastral/countyplats/teton/fieldnotes/t41nr116w_mb.pdf</a>
7236	1971	<a href="https://www.wy.blm.gov/cadastral/countyplats/teton/fieldnotes/t41nr116w_gp275fn.pdf">https://www.wy.blm.gov/cadastral/countyplats/teton/fieldnotes/t41nr116w_gp275fn.pdf</a>
7029	1965-67	<a href="https://www.wy.blm.gov/cadastral/countyplats/teton/fieldnotes/t41nr116w_gp302fn.pdf">https://www.wy.blm.gov/cadastral/countyplats/teton/fieldnotes/t41nr116w_gp302fn.pdf</a>
7127	1966	<a href="https://www.wy.blm.gov/cadastral/countyplats/teton/fieldnotes/t41nr116w_gp301-2fn.pdf">https://www.wy.blm.gov/cadastral/countyplats/teton/fieldnotes/t41nr116w_gp301-2fn.pdf</a>
-	1971	<a href="https://www.wy.blm.gov/cadastral/countyplats/teton/fieldnotes/t41nr116w_gp262fn.pdf">https://www.wy.blm.gov/cadastral/countyplats/teton/fieldnotes/t41nr116w_gp262fn.pdf</a>
6739	1956	<a href="https://www.wy.blm.gov/cadastral/countyplats/teton/fieldnotes/t41nr116w_gp249fn.pdf">https://www.wy.blm.gov/cadastral/countyplats/teton/fieldnotes/t41nr116w_gp249fn.pdf</a>
4530	1892	<a href="https://www.wy.blm.gov/cadastral/countyplats/teton/fieldnotes/t41nr116w_c250fn.pdf">https://www.wy.blm.gov/cadastral/countyplats/teton/fieldnotes/t41nr116w_c250fn.pdf</a>

## T. 41 N., R. 116 W., Sixth Principal Meridian, Wyoming, Field Note Links

Plat Accession Number(s)	Year(s) of Survey	
		Township Exterior Plats
4809	1902	<a href="https://www.wy.blm.gov/cadastral/countyplats/teton/fieldnotes/ext2876.pdf">https://www.wy.blm.gov/cadastral/countyplats/teton/fieldnotes/ext2876.pdf</a>
4809	1902	<a href="https://www.wy.blm.gov/cadastral/countyplats/teton/fieldnotes/retext2876.pdf">https://www.wy.blm.gov/cadastral/countyplats/teton/fieldnotes/retext2876.pdf</a>
4535	1892	<a href="https://www.wy.blm.gov/cadastral/countyplats/teton/fieldnotes/ext2632.pdf">https://www.wy.blm.gov/cadastral/countyplats/teton/fieldnotes/ext2632.pdf</a>

## TOWNSHIP 41 NORTH, RANGE 116 WEST, OF THE SIXTH PRINCIPAL MERIDIAN, WYOMING.

## SUPPLEMENTAL PLAT



This plat removes those riparian tracts created by survey of riparian lands, shown on the plat accepted August 21, 1987, that were determined through litigation to be non-federally owned, and removes the extension survey of omitted lands lying between the original meanders, canceled March 2, 2000, File 9600 (957). This plat is based upon the plats accepted June 30, 1893, February 26, 1970, November 9, 1973 and September 28, 2001.

Plat prepared by Kim Crawford, Cartographic Technician, under the supervision of Joel T. Ebner, Cadastral Surveyor, on October 24, 2012, pursuant to Special Instructions and Assignment Instructions dated August 8, 2012, for Group No. 870, Wyoming.

UNITED STATES DEPARTMENT OF THE INTERIOR  
BUREAU OF LAND MANAGEMENT

Cheyenne, Wyoming

August 28, 2014

This plat, showing amended federal ownership, is based upon the official records and, having been correctly prepared in accordance with the regulations of this Bureau, is hereby accepted.

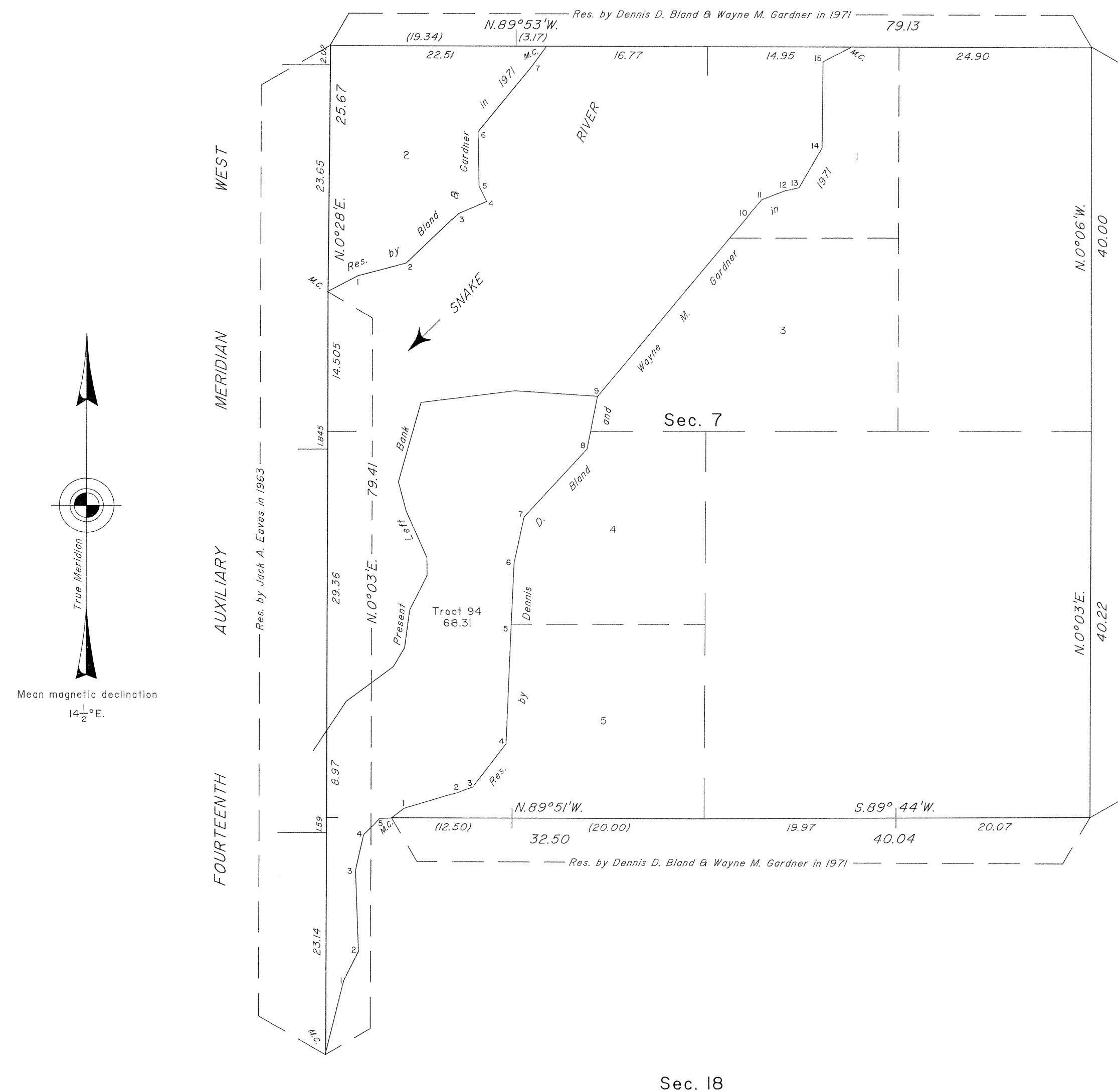
For the Director

*John P. Lee*

John P. Lee  
Chief Cadastral Surveyor for Wyoming

## TOWNSHIP 41 NORTH, RANGE 116 WEST, OF THE SIXTH PRINCIPAL MERIDIAN, WYOMING.

## SURVEY OF PRESENT LEFT BANK SNAKE RIVER

LEFT BANK - SNAKE RIVER  
1971 Record Adjusted Meander

M.C. Secs. 13 & 18 Upstream	N.14°00'E., 7.90
A.P. 1	N.26°45'E., 3.40
A.P. 2	N.2°16'W., 8.49
A.P. 3	N.12°44'E., 3.80
A.P. 4	N.44°14'E., 2.40
A.P. 5	N.87°35'E., 1.20
M.C. Secs. 7 & 18	N.52°57'W., 1.70
A.P. 1	N.73°15'W., 5.70
A.P. 2	N.69°27'E., 1.70
A.P. 3	N.37°36'E., 5.70
A.P. 4	N.2°19'E., 11.92
A.P. 5	N.2°39'E., 6.80
A.P. 6	N.11°59'E., 4.91
A.P. 7	N.42°36'E., 9.71
A.P. 8	N.10°59'E., 5.61
A.P. 9	

## PRESENT LEFT BANK - SNAKE RIVER

A.P. 9	N.86°14'W., 8.59
	S.82°47'W., 9.86
	S.15°47'W., 8.64
	S.14°55'E., 3.18
	S.24°07'E., 5.36
	S.0°47'E., 1.82
	S.26°50'W., 4.01
	S.7°33'W., 3.97
	S.30°51'W., 2.27
	S.53°45'W., 6.08
	S.33°54'W., 3.70

W Bdy., Sec. 7.

Reference should be made to Sheet No. 1 for survey information.

UNITED STATES DEPARTMENT OF THE INTERIOR  
BUREAU OF LAND MANAGEMENT

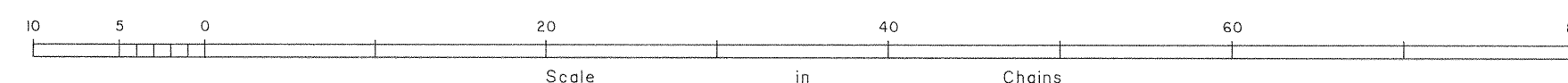
Cheyenne, Wyoming

September 28, 2001

This plat is strictly conformable to the approved field notes, and the survey, having been correctly executed in accordance with the requirements of law and the regulations of this Bureau, is hereby accepted.

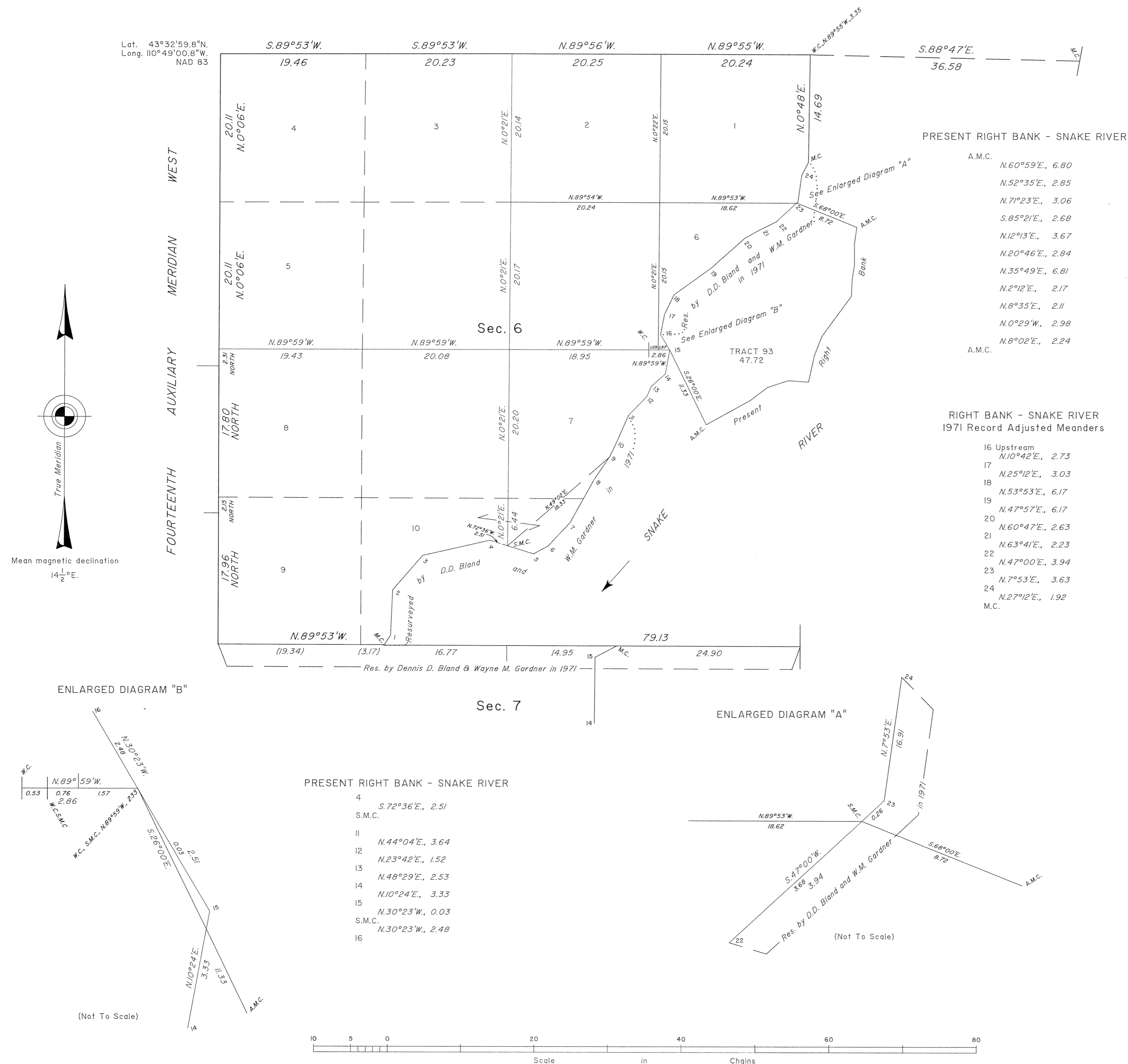
For the Director

Chief Cadastral Surveyor for Wyoming



## TOWNSHIP 41 NORTH, RANGE 116 WEST, OF THE SIXTH PRINCIPAL MERIDIAN, WYOMING.

## DEPENDENT RESURVEY, SUBDIVISION OF SECTION 6, AND SURVEY OF RIPARIAN LANDS



A history of surveys is contained in the field notes.

This plat, in 2 sheets, represents the dependent resurvey of a portion of the Fourteenth Auxiliary Meridian West, through T. 41 N., between Rs. 116 and 117 W., portions of the north boundary and subdivisional lines, and a portion of the adjusted meander line of the right bank of the Snake River, designed to restore the corners in their true original locations according to the best available evidence, the subdivision of section 6, the survey of the riparian partition lines, and a portion of the present right and left banks of the Snake River, T. 41 N., R. 116 W., Sixth Principal Meridian, Wyoming.

Except as indicated hereon, the lottings and areas are as shown on the plat approved June 30, 1893, and the plat accepted November 9, 1973.

Survey executed by Lynn A. Forbes, Cadastral Surveyor, beginning April 30, 1998, and completed May 20, 1998, pursuant to Special Instructions dated April 3, 1998, for Group No. 652, Wyoming.

UNITED STATES DEPARTMENT OF THE INTERIOR  
BUREAU OF LAND MANAGEMENT

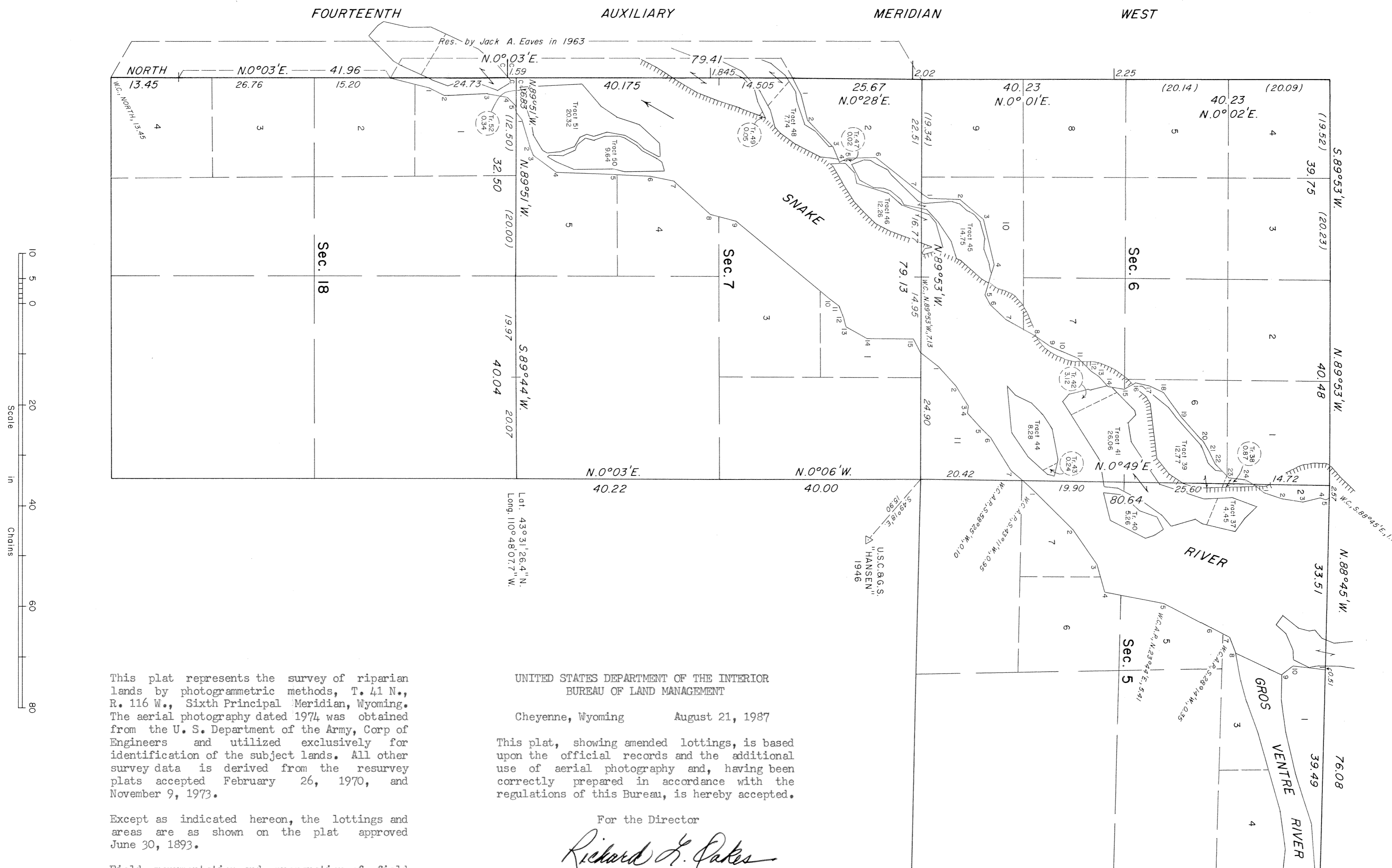
Cheyenne, Wyoming September 28, 2001

This plat is strictly conformable to the approved field notes, and the survey, having been correctly executed in accordance with the requirements of law and the regulations of this Bureau, is hereby accepted.

For the Director

*John P. Lee*  
Chief Cadastral Surveyor for Wyoming

TOWNSHIP 41 NORTH, RANGE 116 WEST, OF THE SIXTH PRINCIPAL MERIDIAN, WYOMING.  
SURVEY OF RIPARIAN LANDS



This plat represents the survey of riparian lands by photogrammetric methods, T. 41 N., R. 116 W., Sixth Principal Meridian, Wyoming. The aerial photography dated 1974 was obtained from the U. S. Department of the Army, Corp of Engineers and utilized exclusively for identification of the subject lands. All other survey data is derived from the resurvey plats accepted February 26, 1970, and November 9, 1973.

Except as indicated hereon, the lottings and areas are as shown on the plat approved June 30, 1893.

Field monumentation and preparation of field notes were not executed during this survey. This plat contains the entire survey record. The metes and bounds descriptions of the tracts shown hereon are available in the group file for Group No. 275, Wyoming.

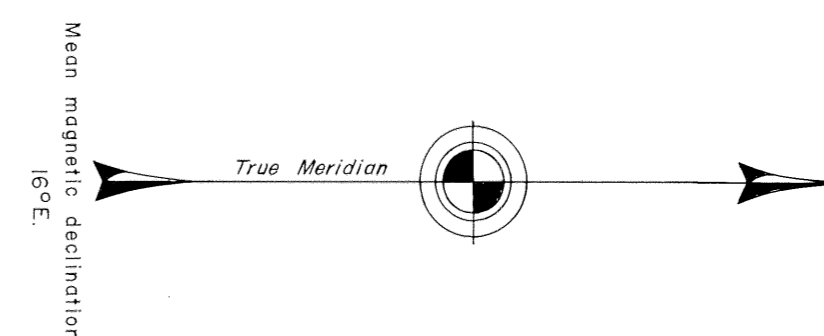
UNITED STATES DEPARTMENT OF THE INTERIOR  
BUREAU OF LAND MANAGEMENT

Cheyenne, Wyoming August 21, 1987

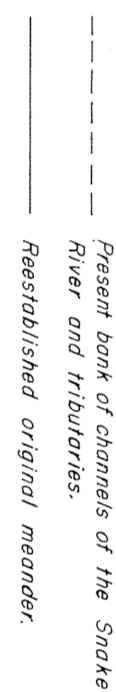
This plat, showing amended lottings, is based upon the official records and the additional use of aerial photography and, having been correctly prepared in accordance with the regulations of this Bureau, is hereby accepted.

For the Director

*Richard E. Cates*  
Chief Cadastral Surveyor for Wyoming



7236



This plat represents a retracement and reestablishment of portions of the north and west boundaries, a portion of the subdivisional lines and the meander lines of the Snake River designed to restore all corners in their true original locations according to the best available evidence and a survey of lands omitted from the original survey.

The positions of the original meanders of the right and left banks of the Snake River, through T. 41 N., R. 116 W., are shown by irregular lines with numbered angle points. By this survey, the original meanders have been reestablished as fixed and limiting boundaries of previously surveyed lands with the directions and lengths of the several courses and distances adjusted to appropriate meander corner positions.

Channels of the Snake River, as shown hereon, have been taken from field note information, aerial photography and current U.S. Geological Survey topographic maps.

CANCELED: March 2, 2000, File 9600 (957)  
This extension survey of omitted lands lying between the  
original meanders shown hereon are canceled.

This plat is strictly conformable to the approved field notes, and the survey, having been correctly executed in accordance with the requirements of law and the regulations of this Bureau, is hereby accepted.

Clark L. Gurnea

Chief, Division of Cadastral Survey



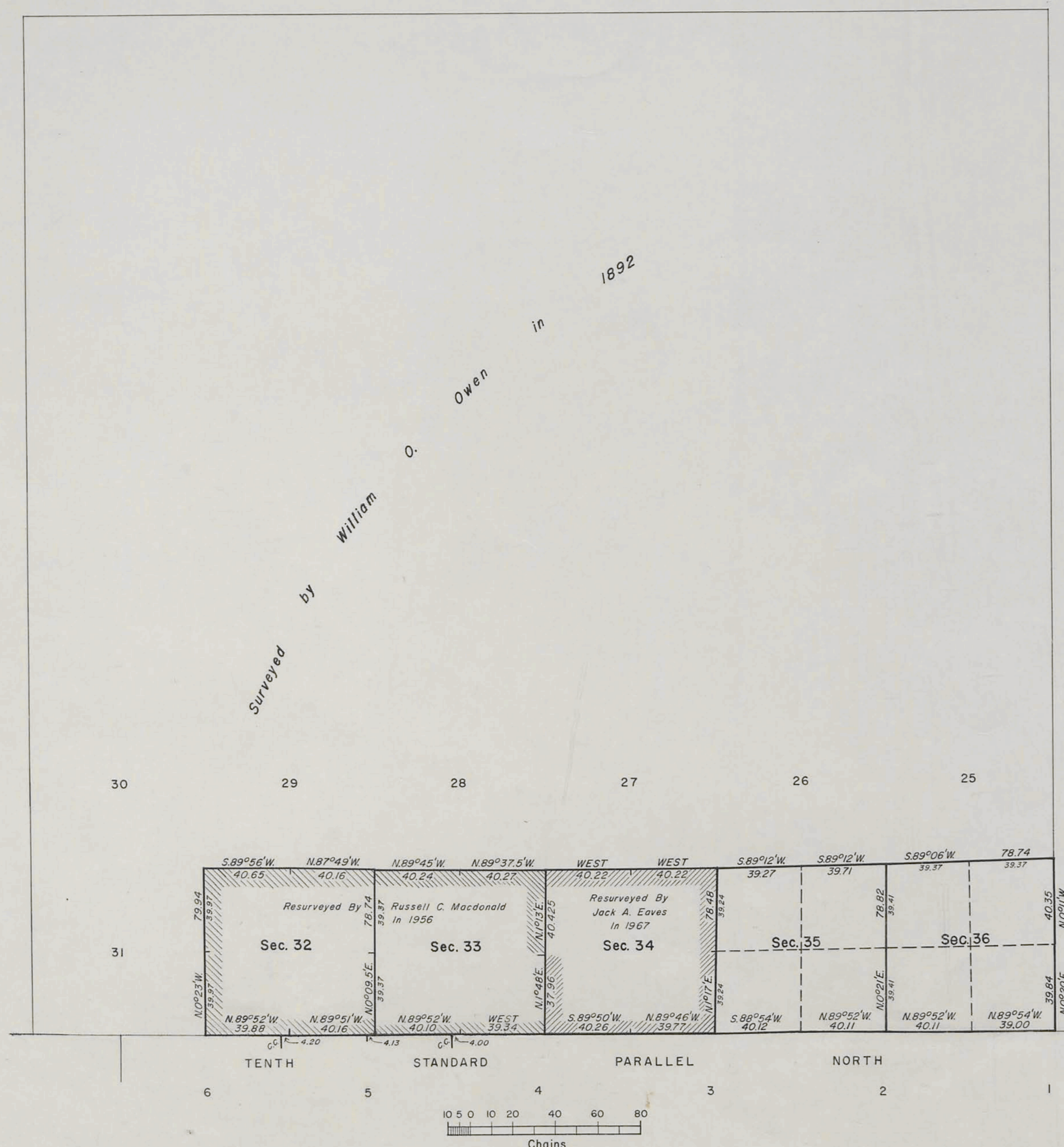
TOWNSHIP 41 NORTH, RANGE 116 WEST OF THE SIXTH PRINCIPAL MERIDIAN, WYOMING  
DEPENDENT RESURVEY

A history of previous surveys is contained in the field note record.

This plat represents a dependent resurvey of a portion of the Tenth Standard Parallel North (through Range 116 West), and portions of the east boundary and subdivisional lines, designed to restore the corners in their true original locations according to the best available evidence.

The areas are as shown on the plat approved June 30, 1893.

These resurveys were executed by Leonard W. Murphy, Cadastral Surveyor, beginning July 11, 1966, and completed July 20, 1966, pursuant to Special Instructions dated May 6, 1966, and Amended Special Instructions dated May 16, 1966, for Group No. 301-2, Wyoming.



UNITED STATES DEPARTMENT OF THE INTERIOR  
BUREAU OF LAND MANAGEMENT  
Washington, D. C. March 17, 1971

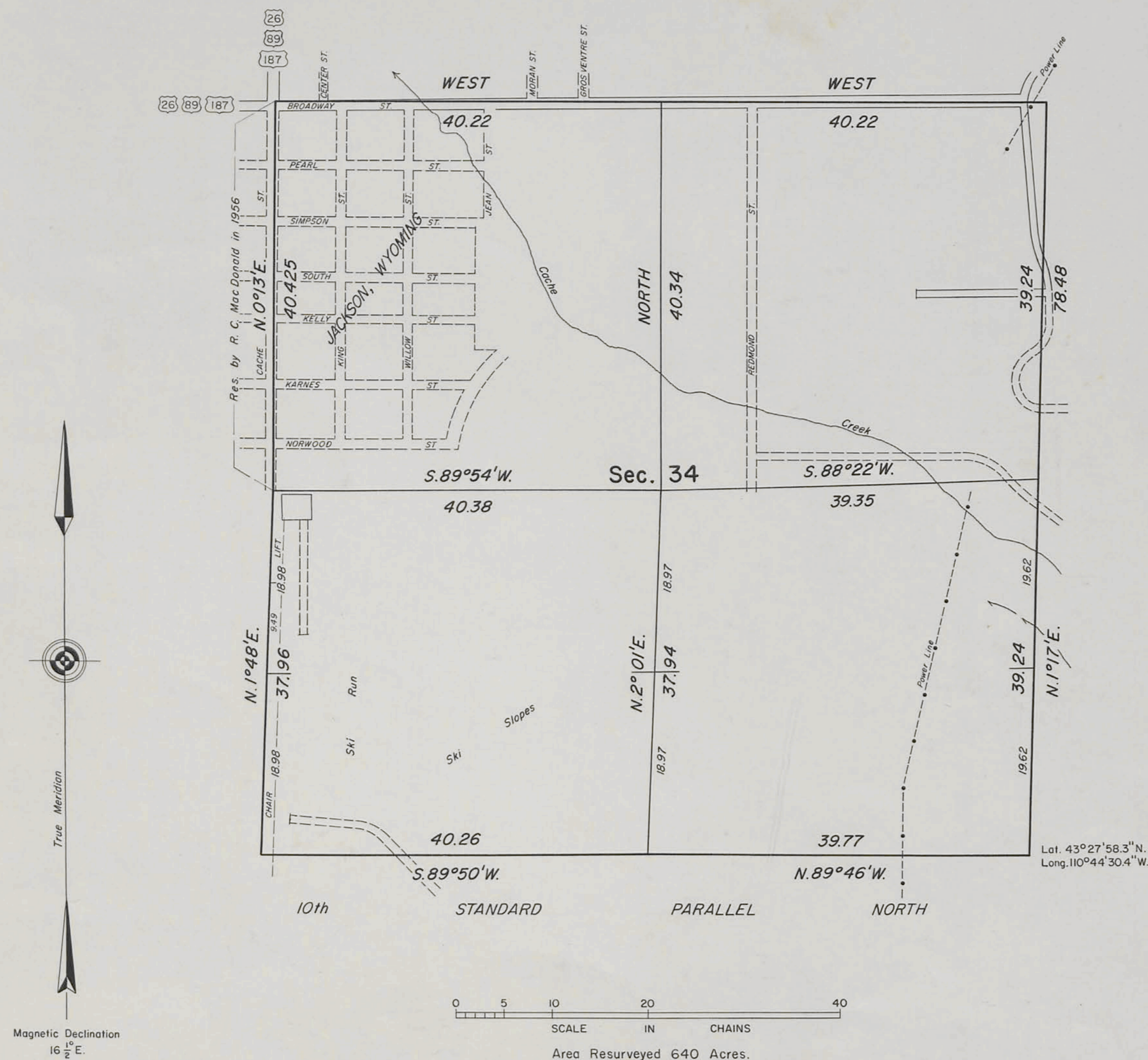
This plat is strictly conformable to the approved field notes, and the survey, having been correctly executed in accordance with the requirements of law and the regulations of this Bureau, is hereby accepted.

For the Director

*Clark I. Humm*

Chief, Division of Cadastral Survey

TOWNSHIP 41 NORTH, RANGE 116 WEST OF THE SIXTH PRINCIPAL MERIDIAN, WYOMING.  
DEPENDENT RESURVEY AND SUBDIVISION OF SECTION 34



This plat represents a retracement and reestablishment of a portion of the Tenth Standard Parallel North, through R. 116 W., and a portion of the boundaries of section 34, designed to restore the corners in their true original locations according to the best available evidence, and, survey of the subdivision of section 34. The lottings and areas are as shown on the plat approved June 30, 1893.

The history of prior surveys is contained in the field note record.

Survey executed by Jack A. Eaves, Supervisory Cadastral Surveyor, beginning July 21, 1965, and completed February 24, 1967, pursuant to Special Instructions for Group No. 302, Wyoming, dated June 14, 1965.

UNITED STATES DEPARTMENT OF THE INTERIOR  
BUREAU OF LAND MANAGEMENT  
Washington, D. C. April 17, 1967

This plat is strictly conformable to the approved field notes, and the survey, having been correctly executed in accordance with the requirements of law and the regulations of this Bureau, is hereby accepted.

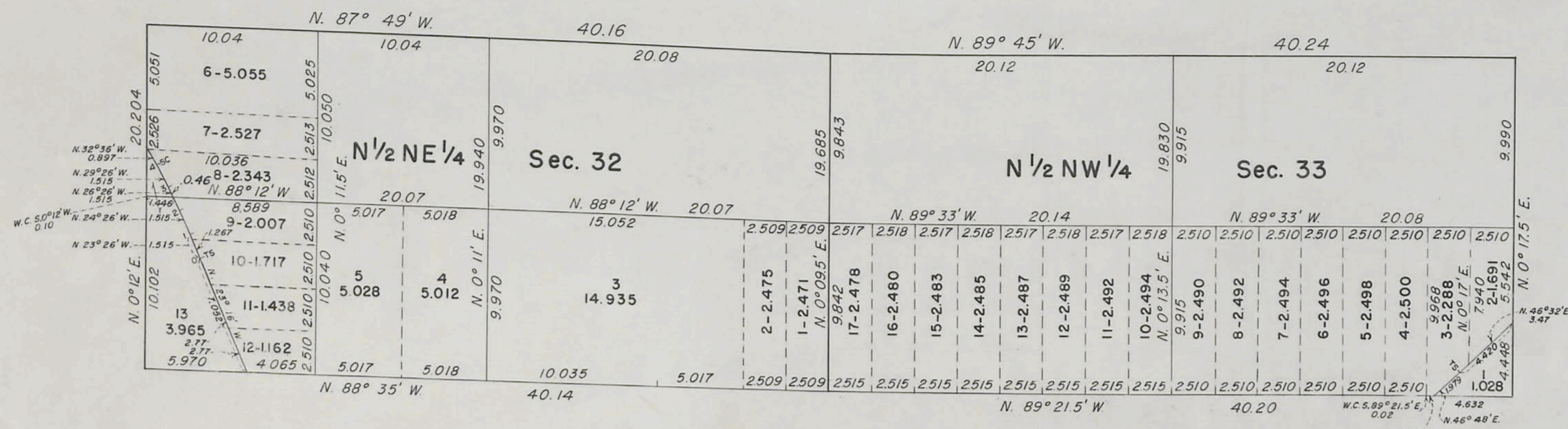
For the Director

*Clark I. Lumme*

Acting Chief, Division of Engineering

# TOWNSHIP 41 NORTH, RANGE 116 WEST OF THE SIXTH PRINCIPAL MERIDIAN, WYOMING

## DEPENDENT RESURVEY AND SURVEY



ENLARGED DIAGRAM

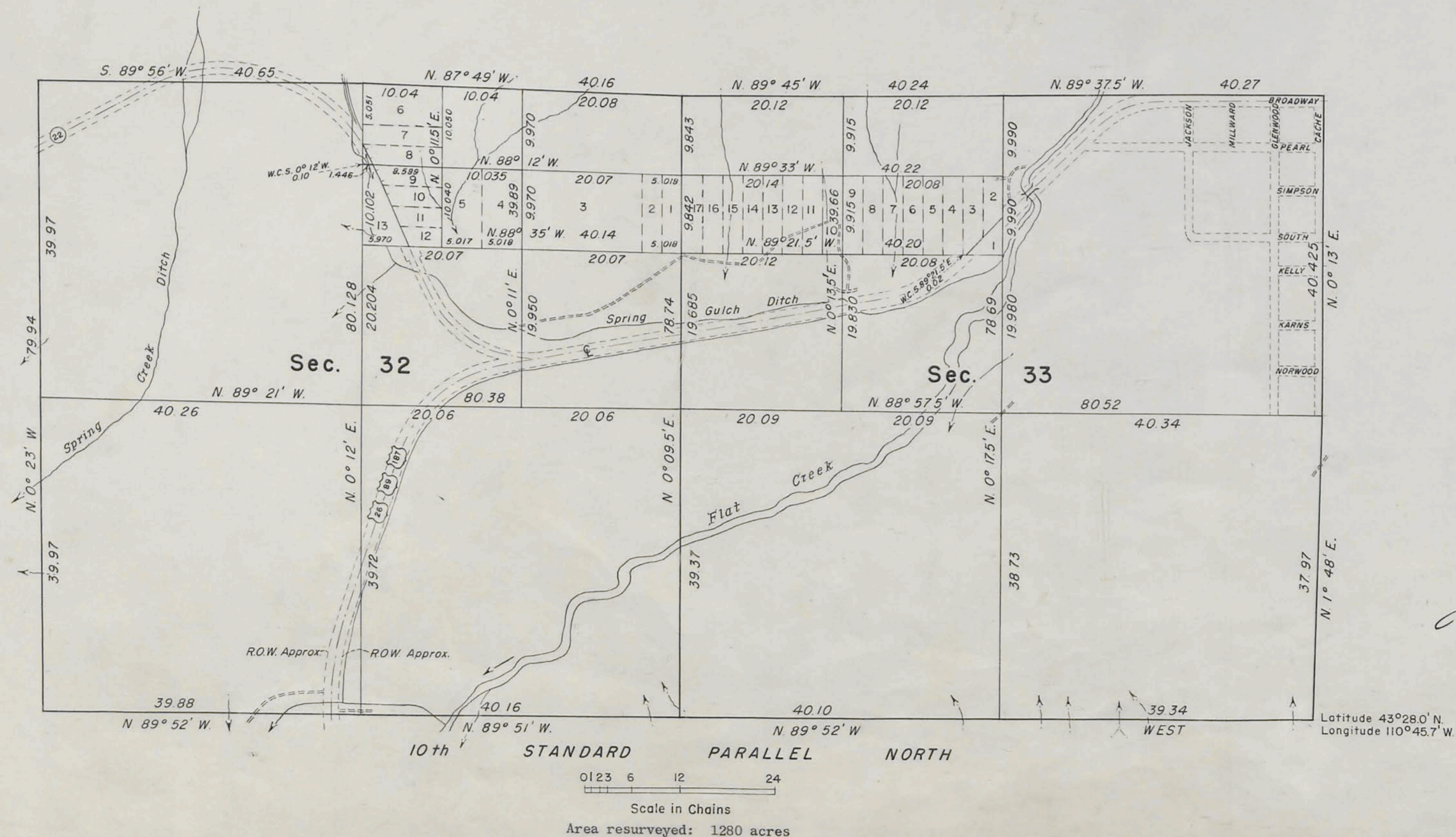
0 1 2 3 6 12  
Scale in Chains

This plat represents a resurvey of the boundaries of sections 32 and 33, T. 41 N., R. 116 W. of the Sixth Principal Meridian, Wyoming, designed to restore the corners in their original locations according to the best available evidence, and a partial subdivision of these sections for small tracts. The lottings and areas are as shown upon the plat of the survey approved June 30, 1893, excepting as shown hereon.

The history of the earlier surveys is set forth in the field note record.

The area is west of Jackson, Wyoming, south of the Grand Teton National Park.

As shown hereon, the survey was executed by Russell C. MacDonald, May 4 to 30, 1956, under Special Instructions dated April 5, 1956, for Group 249, Wyoming.



UNITED STATES DEPARTMENT OF THE INTERIOR  
BUREAU OF LAND MANAGEMENT  
Washington, D. C. December 3, 1957

This plat is strictly conformable to the approved field notes, and the survey, having been correctly executed in accordance with the requirements of law and the regulations of this Bureau, is hereby accepted.

For the Director

*Donald Clement*  
Acting Cadastral Engineering Staff Officer

Latitude 43°28.0' N.  
Longitude 110°45.7' W.

TOWNSHIP N<sup>o</sup> 41 NORTH, RANGE N<sup>o</sup> 116 WEST of the 6<sup>th</sup> Principal MERIDIAN.



Subt. lines, at maximum value	27 76 30
" " " intermediate "	37 71 05
Meander " " " "	5 58 92
" " " maximum "	65 93

Total number of Acres 19,270.03

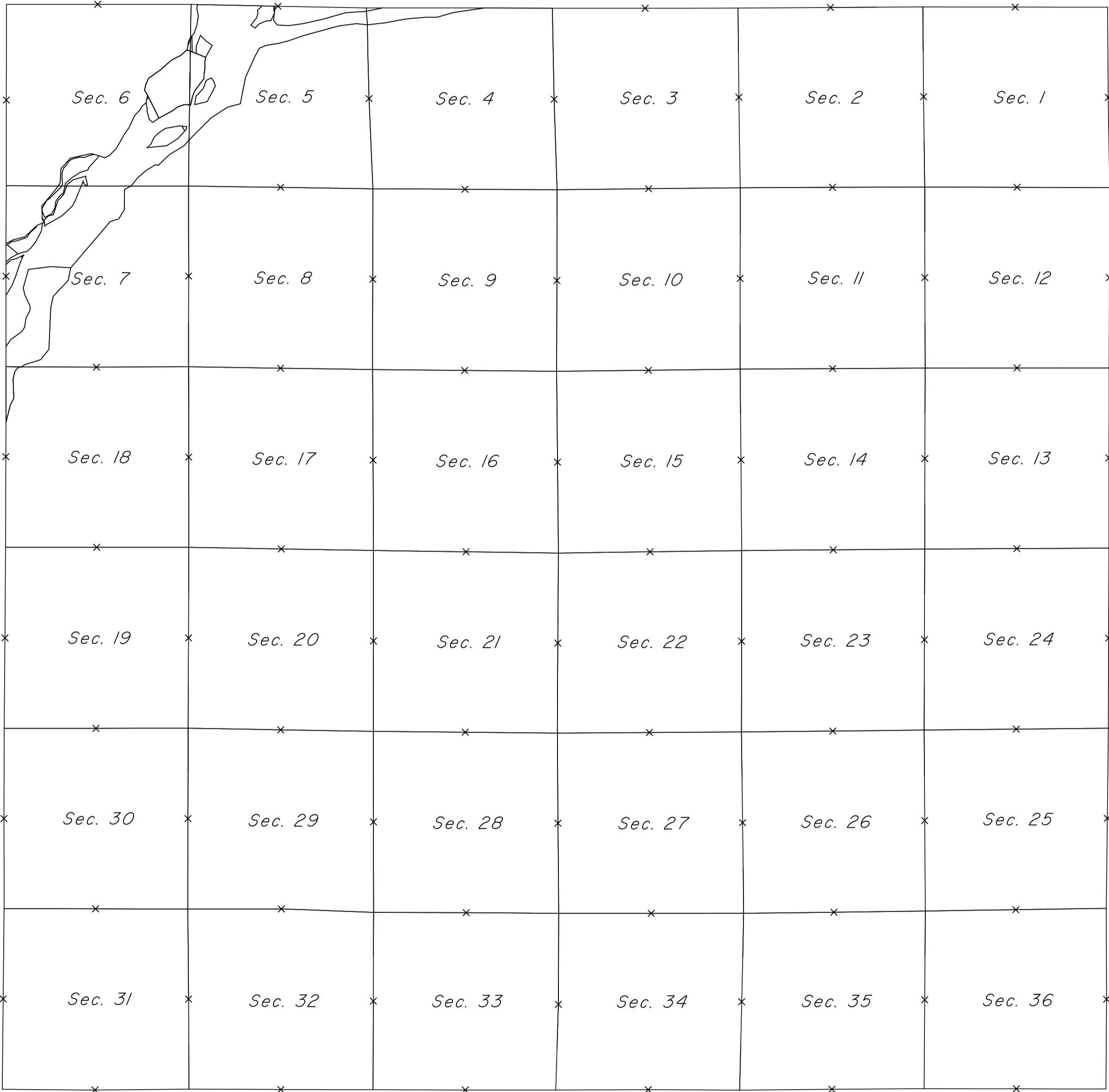
Surveys Designated	By Whom Surveyed	Date of Contract	Amount of Survey A <sup>cs</sup> Ch <sup>s</sup> L <sup>s</sup>	When Surveyed	Magnetic Declination
Township lines	Wm. O. Owen	Sept. 2, 1892	59 67 41	Oct. 6-16, 1892	18° 15' East
Subdivisions	" " "	" " "	6 44 85	" 16-19, "	18° 24' "
Meanders	" " "	" " "	" " "	" " "	" " "

The above Map of Township N<sup>o</sup> 41 North, Range N<sup>o</sup> 116 West of the Sixth Principal Meridian Wyoming Territory is strictly conformable to the field notes of the survey thereon file in this Office which have been examined and approved  
Surveyor General's Office,  
Cheyenne, Wyoming  
June 30 - 1893.  
Wm. A. Richards  
Chy. Gen.

2629

TOWNSHIP 41 NORTH, RANGE 116 WEST OF THE SIXTH PRINCIPAL MERIDIAN, WYOMING.

INDEX TO CORNER REMONUMENTATION WITHOUT SURVEY



NOT TO SCALE

LEGEND

Remonumented Corner as Indicated

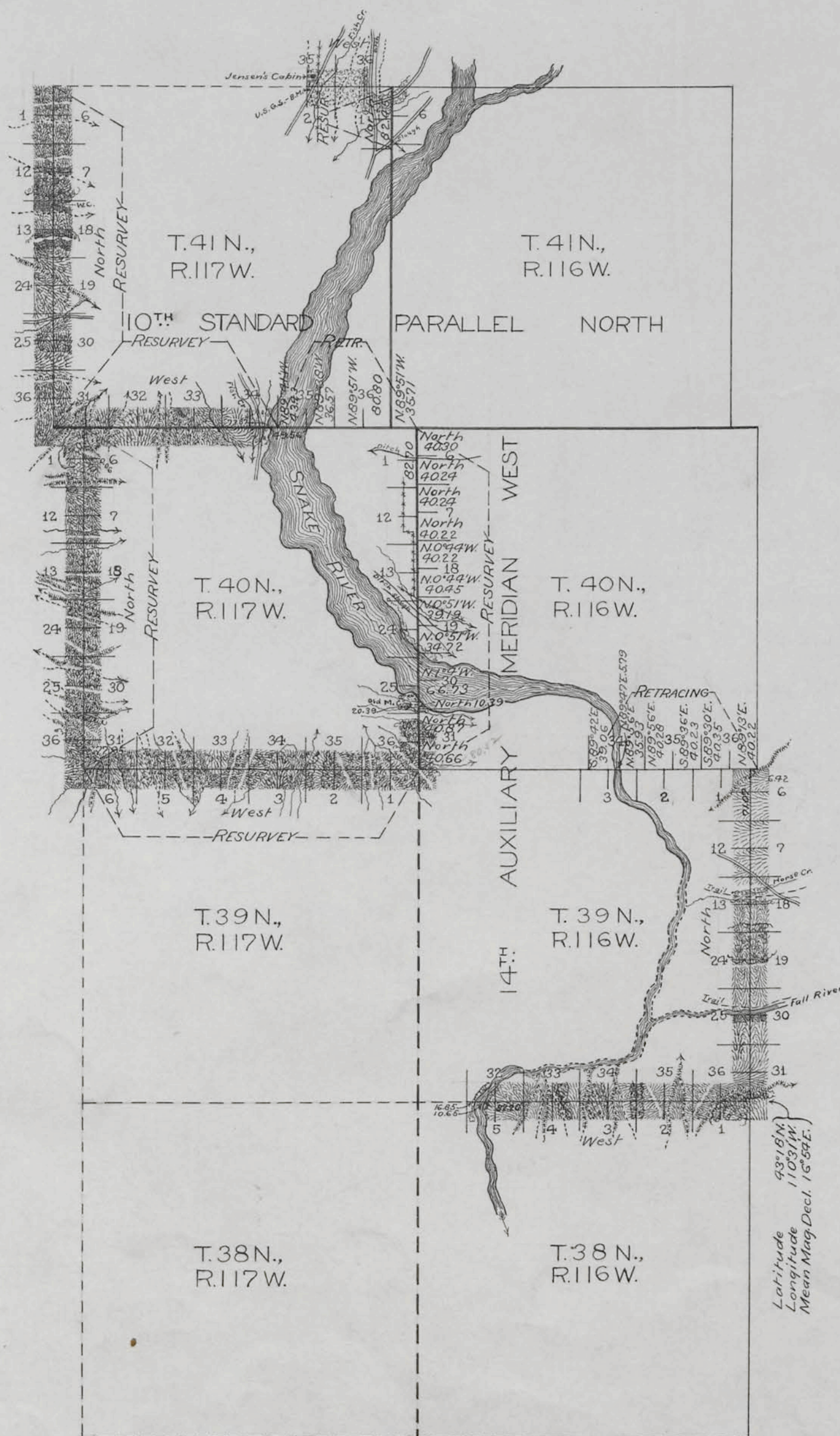
TENTH STANDARD PARALLEL NORTH

4809

# TOWNSHIP EXTERIORS

Scale: 1 inch  $\approx$  160 chains.

Table of Mileage			
Surveys Designated	Amount Mls.	Chs.	Lks.
Standard Lines Retraced	2	36	51
" " Resurveyed	11	5	15
Township " Retraced	3	1	86
" " Resurveyed	18	3	35
" " Surveyed	12	31	7
Connections	6		48
When Surveyed			
July 12, 1902			
" 3-17, "			
" 8-16, "			
June 16-July 17, "			
July 3-14, "			



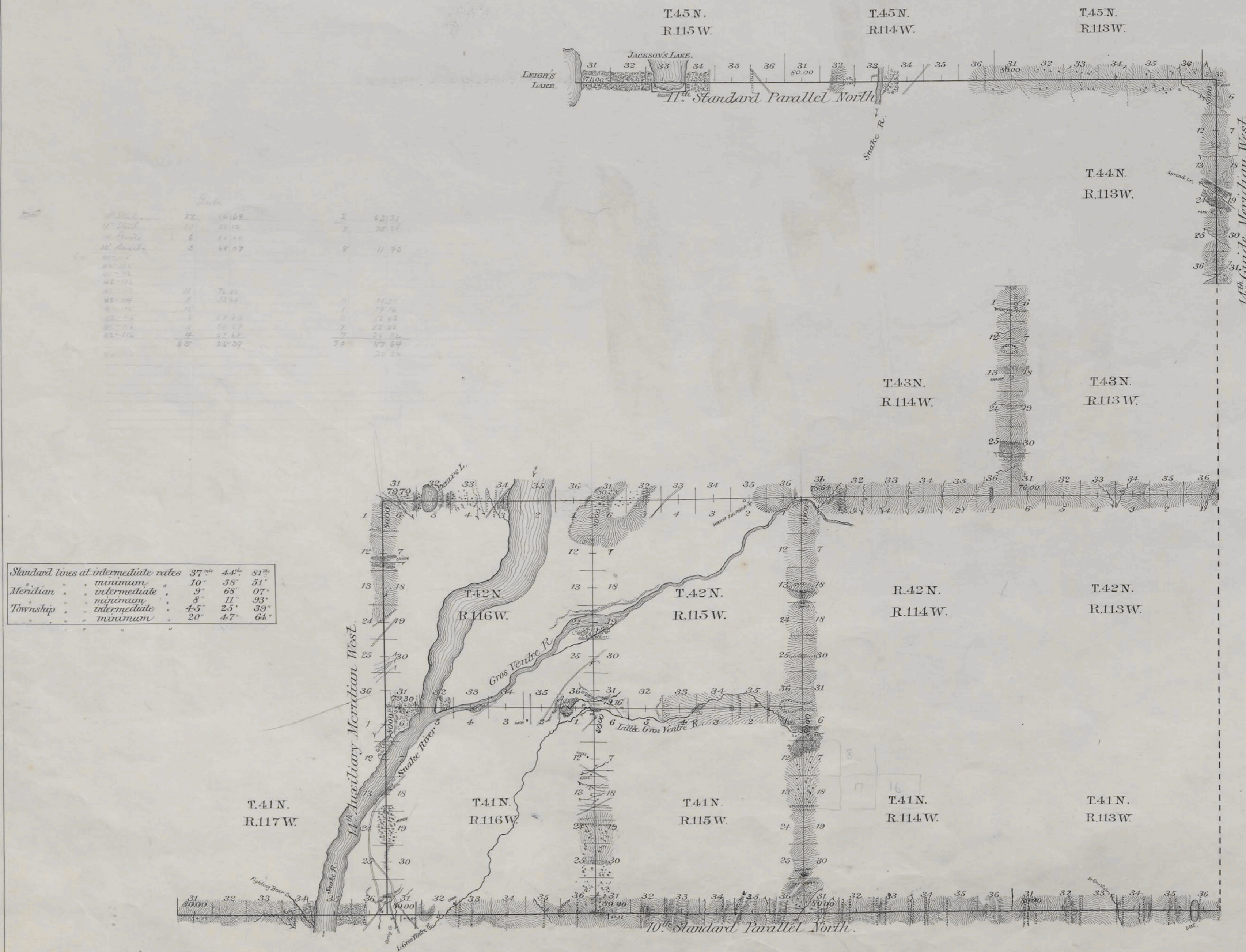
This Plat  
of the  
South and East boundaries of T. 39N., R. 116W.; and  
a part of the North boundary of T. 41N., R. 117W.; the  
Retracing of  
The 10th Standard Parallel North through a part of  
Rgs. 116 and 117W.; and a part of the South boundary  
of T. 40N., R. 116W.; the  
Resurvey of  
The 14th Auxiliary Meridian West through T. 40N., and  
a part of T. 41N.; a part of the 10th Standard Parallel  
North through R. 117W.; the North boundary of  
T. 39N., R. 117W.; the West boundary of T. 40N., R. 117W.;  
and the West boundary of T. 41N., R. 117W. of the  
6th Principal Meridian,  
Wyoming,  
is strictly conformable to the field notes of the survey thereof  
by  
Newell J. Burnham, U.S.D.S.,  
under his  
Contract No. 288,  
dated June 25, 1901,  
which have been examined, approved and filed in this office.  
U.S. Surv. Gen'l's Office,  
Cheyenne, Wyoming,  
April 2, 1903

*Alpheus P. Hancock*  
U.S. Surv. Gen'l.

Survey accepted by the Hon. Commissioner  
in his letter "C", dated Aug. 27, 1903

# EXTERIOR LINES.

Scale 2 miles to 1 inch. Magnetic Variation East.



Surveys Designated	By Whom Surveyed	Date of Contract	Amount of Surveys Mls. Chs.	When Surveyed	Magnetic Declination
10 <sup>th</sup> Stand. Par. N.	Wm O. Owen	Sept. 2, 1892	30 00 00	Sept. 20-28, 1892	18° 28' East
11 <sup>th</sup> Stand. Par. N.			18 23 32	Oct. 22-24, "	18° 15' 18" 24"
14 <sup>th</sup> Guide Mer. W.			6 00 00	Oct. 20-21, "	18° 12' 18" 30"
14 <sup>th</sup> Auxil.			12 00 00	Oct. 2-4, "	18° 12' "
Township Lines			65 73 03	Oct. 6-18, "	18° 12' 18" 55"

I hereby certify that the above diagram of the Exterior lines of Townships 41 and 42 North, Ranges 115 and 116 West, Townships 43 North, Ranges 113 and 114 West, the 10<sup>th</sup> and 11<sup>th</sup> Standard Parallels North, the 14<sup>th</sup> Guide and the 14<sup>th</sup> Auxiliary Meridian, west of the 6<sup>th</sup> Principal Meridian, Wyoming, is strictly conformable to the field notes of survey thereon on file in this office, which have been examined and approved.

Surveyor General's Office,  
Cheyenne, Wyo. June 30-1893

*Wm A. Richards*  
U.S. Surveyor General.