

## T. 41 N., R. 117 W., Sixth Principal Meridian, Wyoming, Field Note Links

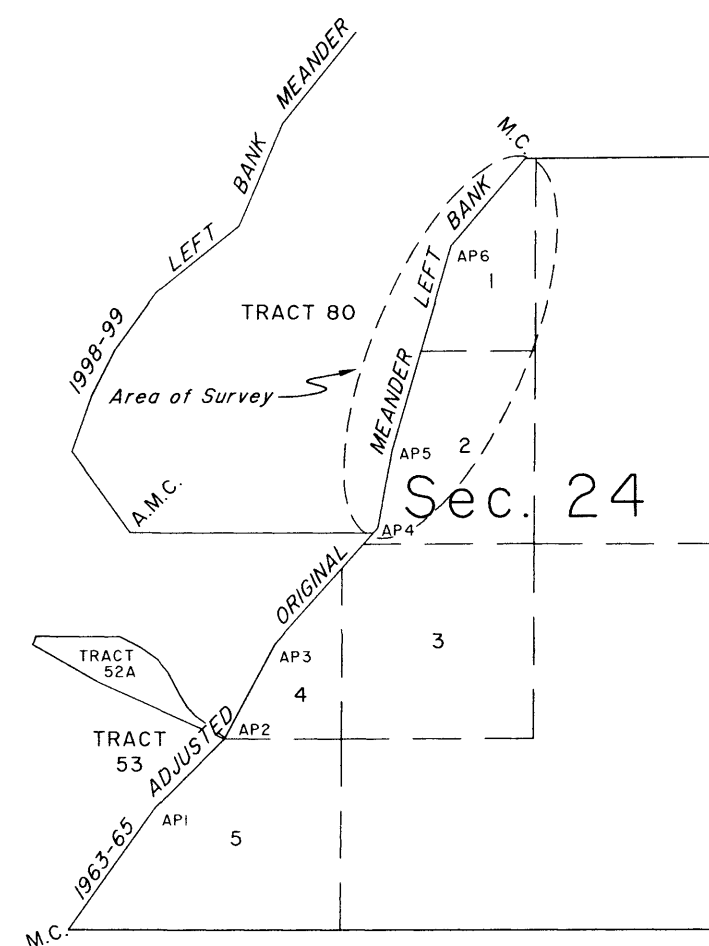
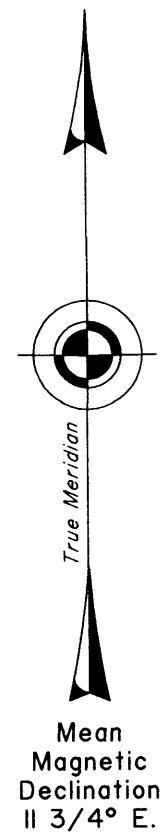
Plat Accession Number(s)	Year(s) of Survey	
Township Subdivision Plats		
8711	2015	<a href="https://www.wy.blm.gov/cadastral/countyplats/teton/fieldnotes/t41nr117w_gp946fn.pdf">https://www.wy.blm.gov/cadastral/countyplats/teton/fieldnotes/t41nr117w_gp946fn.pdf</a>
8522	2002-06	<a href="https://www.wy.blm.gov/cadastral/countyplats/teton/fieldnotes/t41nr117w_gp652afn.pdf">https://www.wy.blm.gov/cadastral/countyplats/teton/fieldnotes/t41nr117w_gp652afn.pdf</a>
8321; 8322	1998-99	<a href="https://www.wy.blm.gov/cadastral/countyplats/teton/fieldnotes/t41nr117w_gp652fn.pdf">https://www.wy.blm.gov/cadastral/countyplats/teton/fieldnotes/t41nr117w_gp652fn.pdf</a>
Group 275 metes and bounds descriptions of tracts		
7815	1987	<a href="https://www.wy.blm.gov/cadastral/countyplats/teton/fieldnotes/t41nr117w_mb.pdf">https://www.wy.blm.gov/cadastral/countyplats/teton/fieldnotes/t41nr117w_mb.pdf</a>
7096	1963-65	<a href="https://www.wy.blm.gov/cadastral/countyplats/teton/fieldnotes/t41nr117w_gp239_275fn.pdf">https://www.wy.blm.gov/cadastral/countyplats/teton/fieldnotes/t41nr117w_gp239_275fn.pdf</a>
-	1960	<a href="https://www.wy.blm.gov/cadastral/countyplats/teton/fieldnotes/t40nr117w_gp239fn.pdf">https://www.wy.blm.gov/cadastral/countyplats/teton/fieldnotes/t40nr117w_gp239fn.pdf</a>
4591	1918	<a href="https://www.wy.blm.gov/cadastral/countyplats/teton/fieldnotes/t41nr117w_gp046fn.pdf">https://www.wy.blm.gov/cadastral/countyplats/teton/fieldnotes/t41nr117w_gp046fn.pdf</a>
4589	1902	<a href="https://www.wy.blm.gov/cadastral/countyplats/teton/fieldnotes/t41nr117w_c288fn.pdf">https://www.wy.blm.gov/cadastral/countyplats/teton/fieldnotes/t41nr117w_c288fn.pdf</a>
4588	1893	<a href="https://www.wy.blm.gov/cadastral/countyplats/teton/fieldnotes/t41nr117w_c250fn.pdf">https://www.wy.blm.gov/cadastral/countyplats/teton/fieldnotes/t41nr117w_c250fn.pdf</a>

## T. 41 N., R. 117 W., Sixth Principal Meridian, Wyoming, Field Note Links

Plat Accession Number(s)	Year(s) of Survey	
		Township Exterior Plats
4809	1902	<a href="https://www.wy.blm.gov/cadastral/countyplats/teton/fieldnotes/ext2876.pdf">https://www.wy.blm.gov/cadastral/countyplats/teton/fieldnotes/ext2876.pdf</a>
4809	1902	<a href="https://www.wy.blm.gov/cadastral/countyplats/teton/fieldnotes/retext2876.pdf">https://www.wy.blm.gov/cadastral/countyplats/teton/fieldnotes/retext2876.pdf</a>
4587	1892-93	<a href="https://www.wy.blm.gov/cadastral/countyplats/teton/fieldnotes/ext2680.pdf">https://www.wy.blm.gov/cadastral/countyplats/teton/fieldnotes/ext2680.pdf</a>
4535	1892	<a href="https://www.wy.blm.gov/cadastral/countyplats/teton/fieldnotes/ext2632.pdf">https://www.wy.blm.gov/cadastral/countyplats/teton/fieldnotes/ext2632.pdf</a>

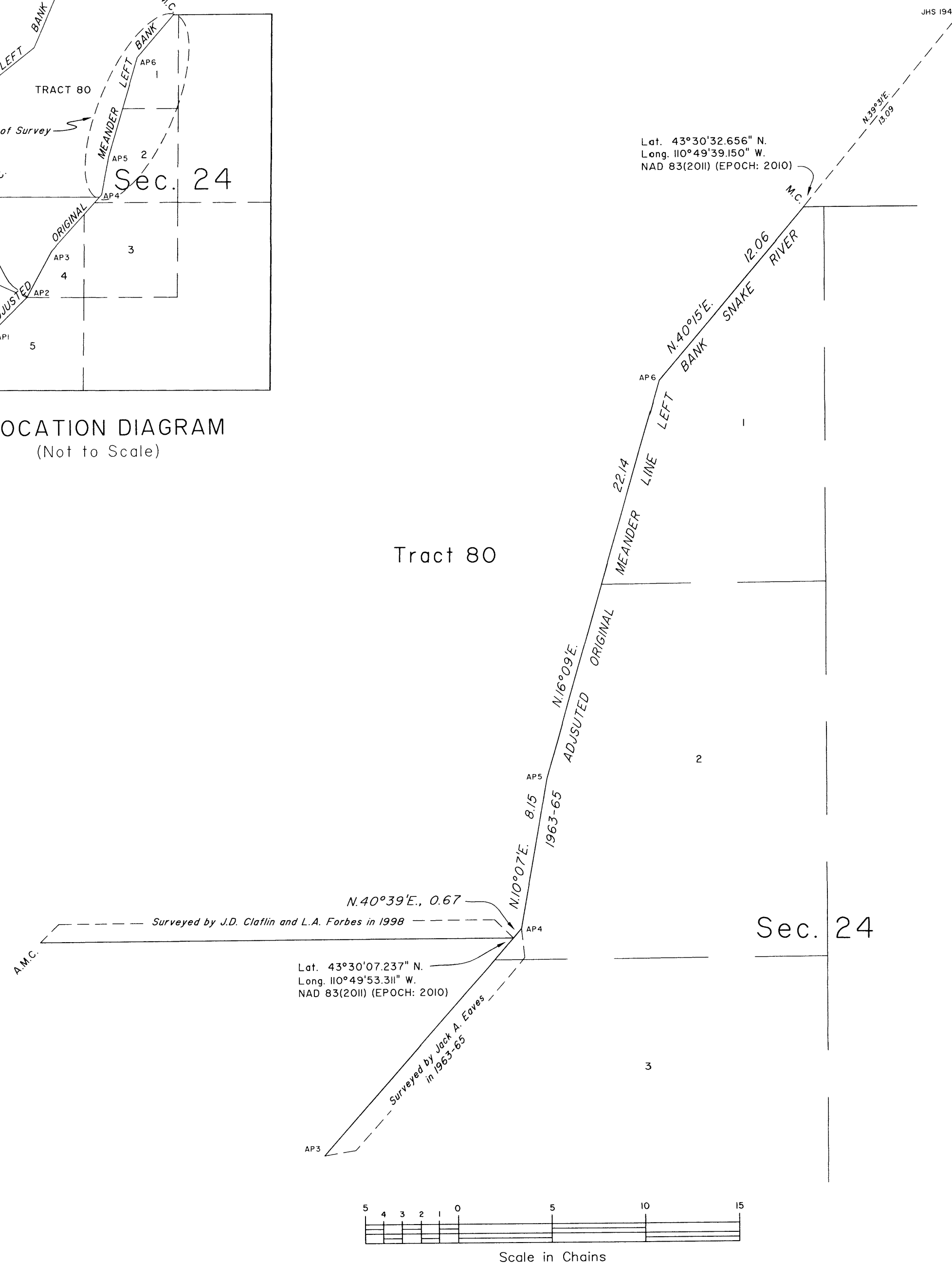
## TOWNSHIP 41 NORTH, RANGE 117 WEST, OF THE SIXTH PRINCIPAL MERIDIAN, WYOMING.

## DEPENDENT RESURVEY

LOCATION DIAGRAM  
(Not to Scale)

Tract 80

Sec. 24



A history of surveys is contained in the field notes.

This plat represents the dependent resurvey of a portion of the 1963-65 adjusted original meanders of the left bank of the Snake River, designed to restore the corners in their true original locations according to the best available evidence, section 24, T. 41 N., R. 117 W., Sixth Principal Meridian, Wyoming.

Except as indicated hereon, the tracts, lottings and areas are as shown on the plat approved August 16, 1894 and plats accepted September 28, 2001, March 29, 2010, and August 28, 2014.

Survey executed by David C. Lee, Cadastral Surveyor, beginning September 22, 2015 and completed September 22, 2015 pursuant to special instructions and assignment instructions dated August 18, 2015 for Group No. 946, Wyoming.

UNITED STATES DEPARTMENT OF THE INTERIOR  
BUREAU OF LAND MANAGEMENT

Cheyenne, Wyoming

January 13, 2017

This plat is strictly conformable to the approved field notes, and the survey, having been correctly executed in accordance with the requirements of law and the regulations of this Bureau, is hereby accepted.

For the Director

John P. Lee  
Chief Cadastral Surveyor for Wyoming

TOWNSHIP 41 NORTH, RANGE 117 WEST, OF THE SIXTH PRINCIPAL MERIDIAN, WYOMING.

SUPPLEMENTAL PLAT

This plat removes those riparian tracts created by survey of riparian lands, shown on the plat accepted August 21, 1987, that were determined through litigation to be non-federally owned, and removes the extension survey of omitted lands lying between the original meanders, canceled March 2, 2000, File 9600 (957). This plat is based upon the plats accepted February 26, 1970, September 28, 2001, January 13, 2010, March 29, 2010, July 27, 2010 and November 3, 2011.

Plat prepared by Kim Crawford, Cartographic Technician, under the supervision of Joel T. Ebner, Cadastral Surveyor, on August 28, 2012, pursuant to Special Instructions and Assignment Instructions dated August 8, 2012, for Group No. 870, Wyoming.

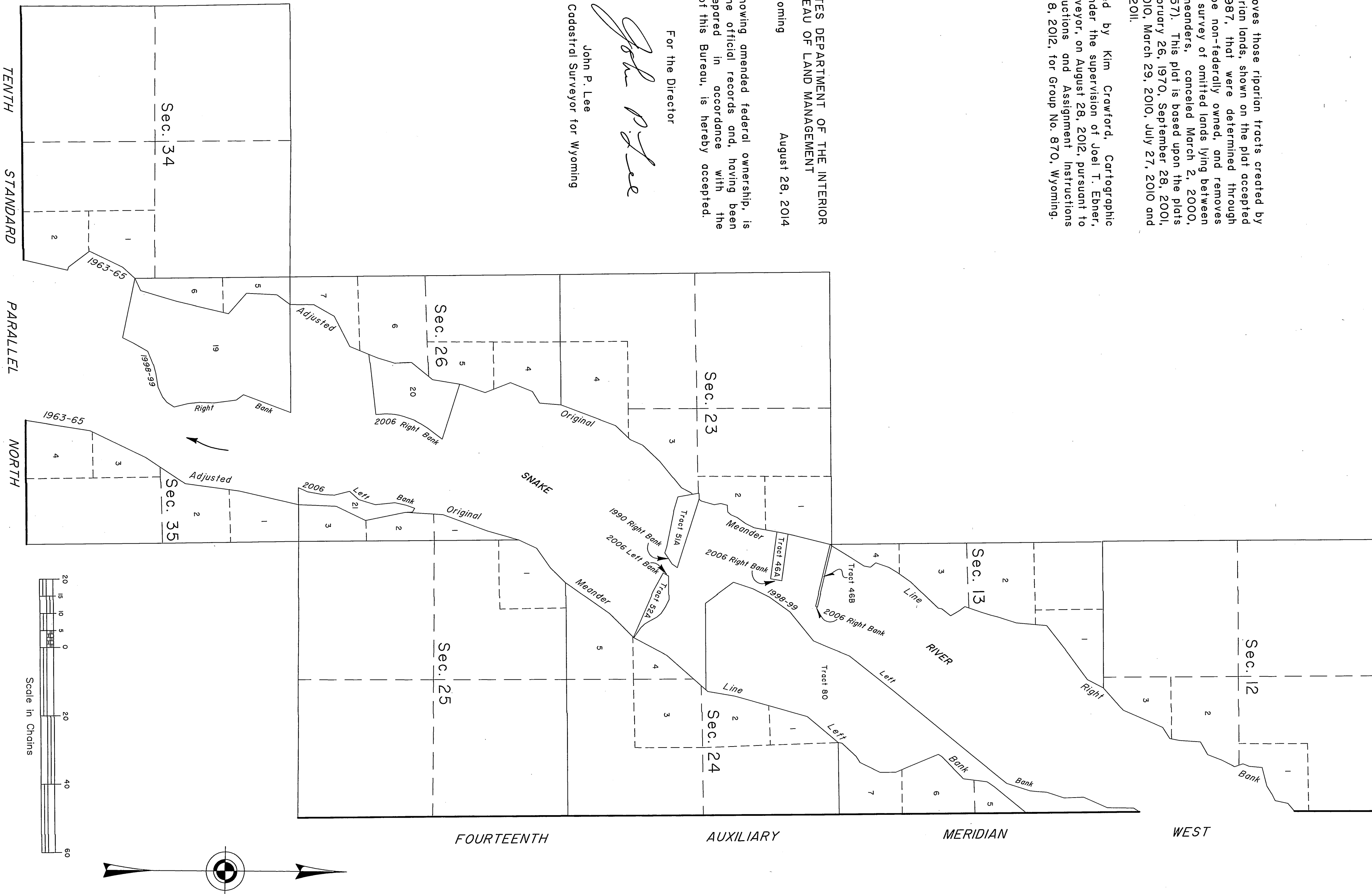
UNITED STATES DEPARTMENT OF THE INTERIOR  
BUREAU OF LAND MANAGEMENT  
Cheyenne, Wyoming      August 28, 2014

This plat, showing amended federal ownership, is based upon the official records and, having been correctly prepared in accordance with the regulations of this Bureau, is hereby accepted.

For the Director

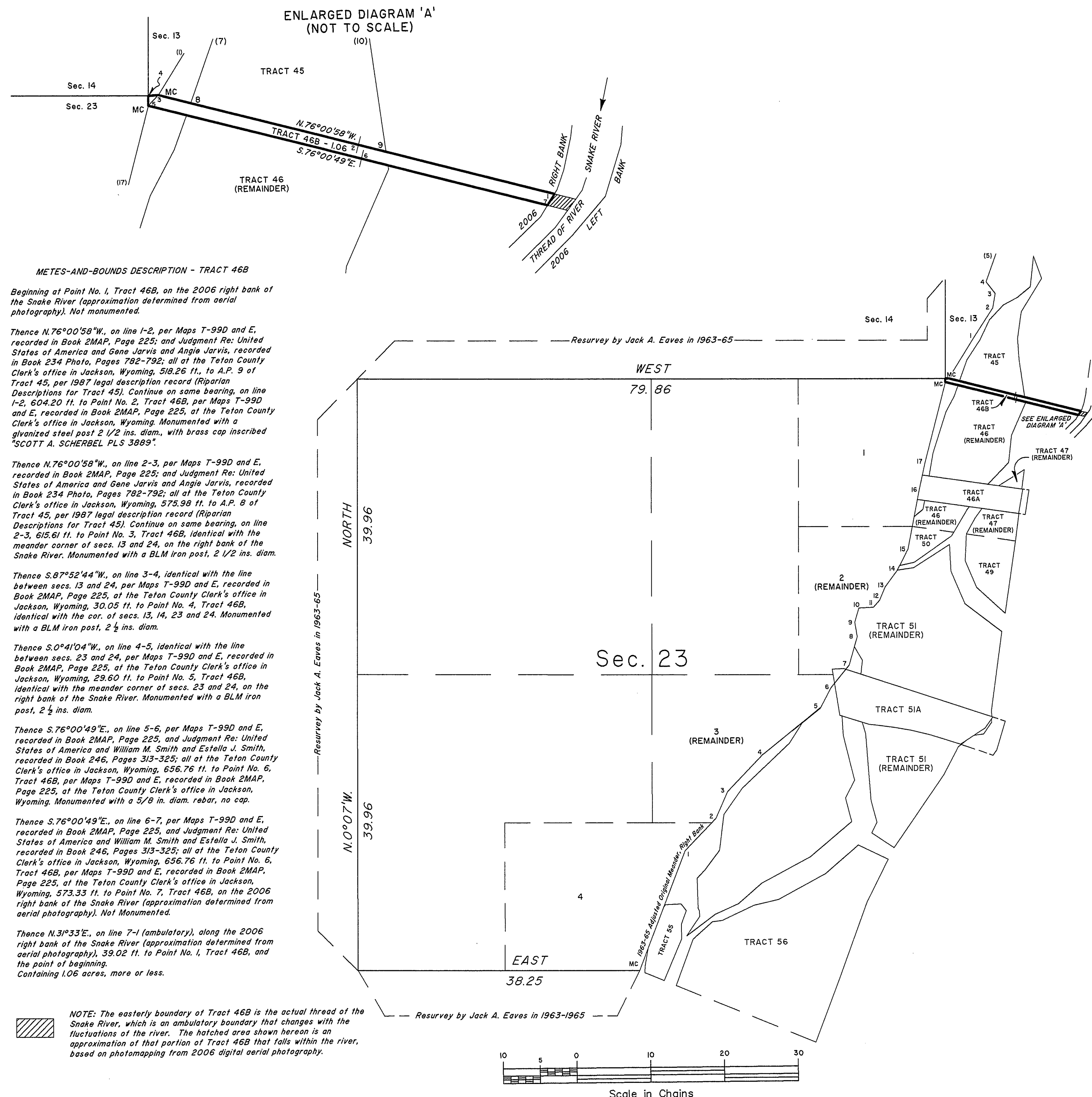
*John P. Lee*

John P. Lee  
Chief Cadastral Surveyor for Wyoming



## TOWNSHIP 41 NORTH, RANGE 117 WEST, OF THE SIXTH PRINCIPAL MERIDIAN, WYOMING.

## SUPPLEMENTAL PLAT SHOWING TRACT SEGREGATION



This plat represents the segregation of Tract 46B from Tract 46, T. 41 N., R. 117 W., Sixth Principal Meridian, Wyoming.

The boundaries of Tract 46B are per Judgement Re: United States of America and Gene Jarvis and Angie Jarvis; and Judgement Re: United States of America and William M. Smith and Estella J. Smith, recorded in Book 234 Photo, pages 782-792, and Book 246, Pages 313-325, respectively, both at the Teton County Clerk's Office in Jackson, Wyoming. These boundaries are as depicted (allowing for trivial differences in orientation and measurement determined by local resurvey) on Maps T-99D and T-99E, both recorded in Book 2MAP Page 225, at the Teton County Clerk's Office in Jackson, Wyoming.

Except as indicated hereon, the lots and areas are as shown on the plat accepted August 21, 1987.

Note: The banks and thread of the Snake River were determined by the method of photomapping from 2006 digital aerial photography.

Supplemental plat prepared by Olian T. Shockley, Cadastral Surveyor, pursuant to Special Instructions dated March 15, 2010 for Group No. 814, Wyoming and Supplemental Special Instructions No. 2, dated April 19, 2010 for Group No. 814, Wyoming.

UNITED STATES DEPARTMENT OF THE INTERIOR  
BUREAU OF LAND MANAGEMENT

Cheyenne, Wyoming

November 3, 2011

This plat, showing amended lottings, is based upon the official records and, having been correctly prepared in accordance with the regulations of this Bureau, is hereby accepted.

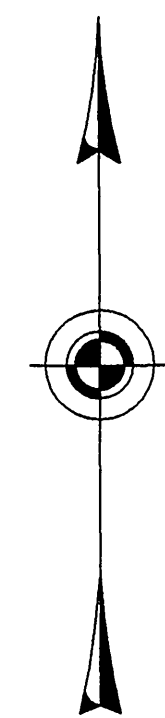
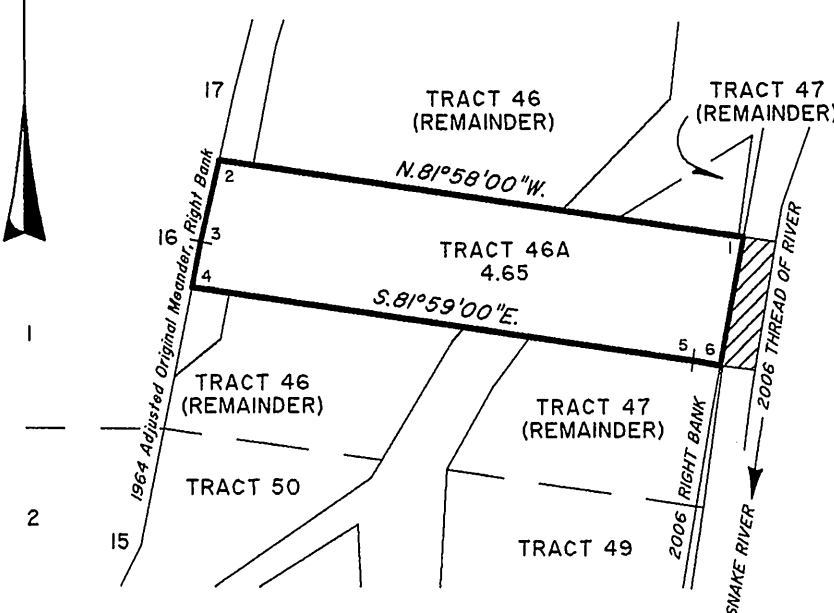
For the Director

*John P. Lee*  
John P. Lee

Chief Cadastral Surveyor for Wyoming

## TOWNSHIP 41 NORTH, RANGE 117 WEST, OF THE SIXTH PRINCIPAL MERIDIAN, WYOMING.

## SUPPLEMENTAL PLAT SHOWING TRACT SEGREGATION

ENLARGED DIAGRAM  
(NOT TO SCALE)

## METES-AND-BOUNDS DESCRIPTION - TRACT 46A

Beginning at Point No. 1, Tract 46A, on the 2006 right bank of the Snake River (approximation determined from aerial photography). Not monumented.

Thence N.81°58'00"W., 909.17 ft. (bearing of line 1-2, Tract 46A, per Judgement Re: United States and Joseph E. Zachritz and Constance Jent Zachritz, recorded in Book 234, Photo, Pages 1154 to 1164, Teton County Clerk's Office in Jackson, Wyoming), to Point No. 2, Tract 46A, at intersection with line 16-17 of the 1964 adjusted original meanders of the right bank of the Snake River, per Map of Survey No. T-148D, recorded in Book 2MAP, Page 216; and Map of Survey No. T-148E, recorded in Book 2MAP, Page 228, Teton County Clerk's Office in Jackson, Wyoming. Not monumented.

Thence S.12°07'57"W., 142.87 ft., along line 17-16 of the 1964 adjusted original meanders of the right bank of the Snake River, identical with line 2-3 of Tract 46A, per Map of Survey No. T-148E, recorded in Book 2MAP, Page 228, Teton County Clerk's Office in Jackson, Wyoming, to Point No. 3, Tract 46A, identical with angle point No. 16, 1964 adjusted original meanders of the right bank of the Snake River. Monumented with a BLM iron post, 2 1/2 ins. diam.

Thence S.10°50'21"W., 79.48 ft., along line 16-15 of the 1964 adjusted original meanders of the right bank of the Snake River, identical with line 3-4 of Tract 46A, per Map of Survey No. T-148E, recorded in Book 2MAP, Page 228, Teton County Clerk's Office in Jackson, Wyoming, to Point No. 4, Tract 46A, on line 16-15 of the 1964 adjusted original meanders of the right bank of the Snake River, per Judgement Re: United States and Julie Thomas Obering, recorded in Book 259, Pages 469 to 472; and Map of Survey No. T-148E, recorded in Book 2MAP, Page 228, Teton County Clerk's Office in Jackson, Wyoming. Monumented with a 5/8 in. diam. rebar with plastic cap inscribed "PLS 3831".

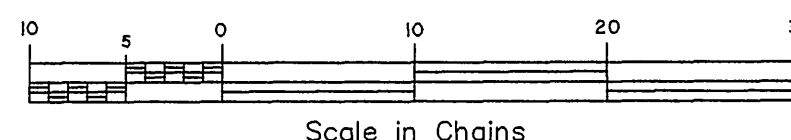
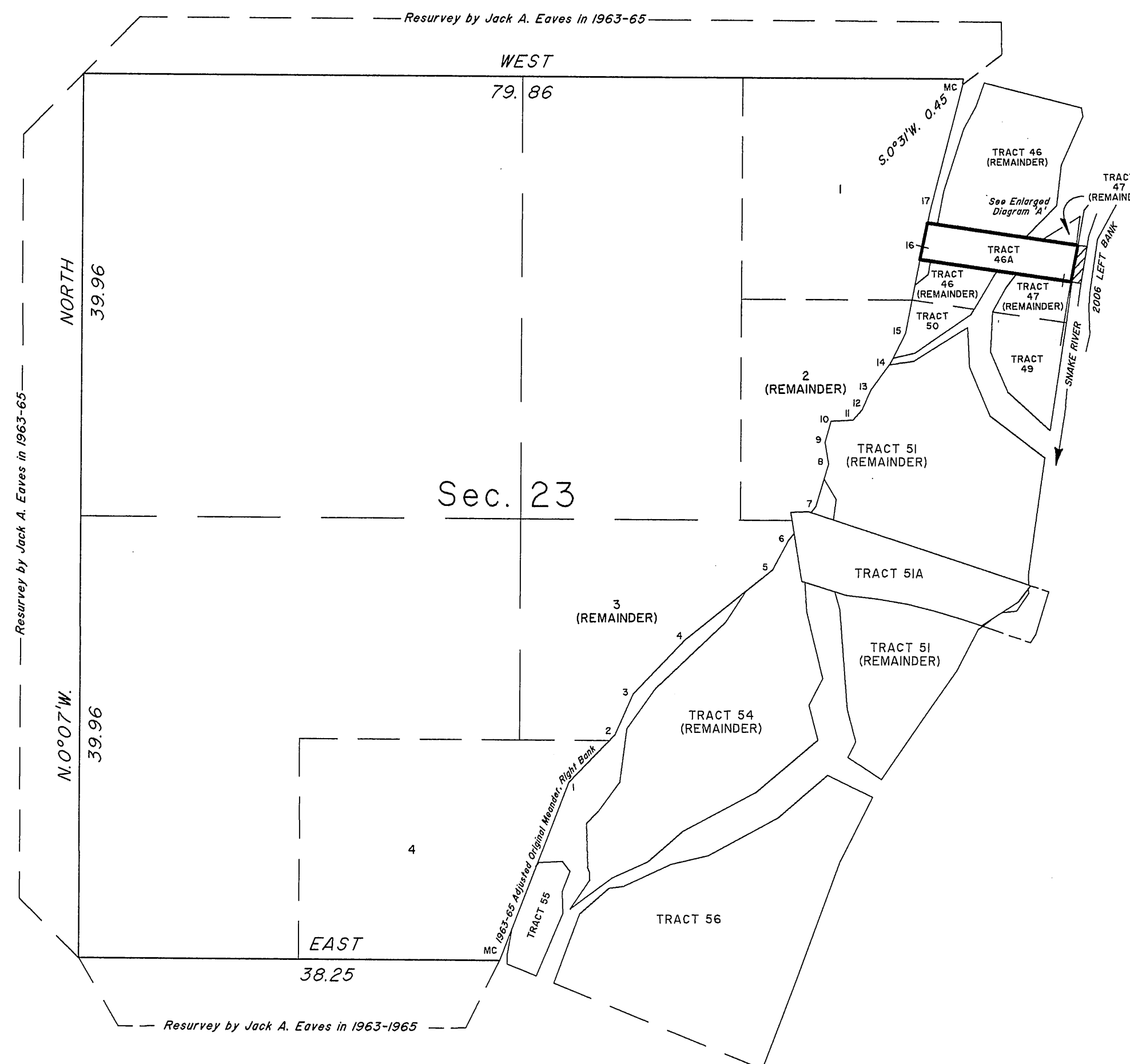
Thence S.81°59'00"E., 867.90 ft., (line 4-5, Tract 46A, per Boundary Line Agreement, United States of America/Kindred, LLC, recorded in Book 577, Pages 25 to 27; and Map of Survey No. T-148E, recorded in Book 2MAP, Page 228, Teton County Clerk's Office in Jackson, Wyoming.) to Point No. 5, Tract 46A, per Map of Survey No. T-148E, recorded in Book 2MAP, Page 228, Teton County Clerk's Office in Jackson, Wyoming. Monumented with pipe, 2 ins. diam., with aluminum cap stamped "PLS 3883".

Thence S.81°59'00"E., 47.95 ft. to Point No. 6, Tract 46A, on the 2006 right bank of the Snake River (approximation determined from aerial photography). Not monumented.

Thence N.9°56'E., 221.77 ft. (ambulatory, approximation determined from aerial photography) to Point No. 1, Tract 46A, and the point of beginning. Containing 4.65 acres, more or less.



NOTE: The easterly boundary of Tract 46A is the actual thread of the Snake River, which is an ambulatory boundary that changes with the fluctuations of the river. The hatched area shown hereon is an approximation of that portion of Tract 46A that falls within the river, based on photomapping from 2006 digital aerial photography.



Scale in Chains

This plat represents the segregation of Tract 46A from Tracts 46 and 47, T. 41 N., R. 117 W., Sixth Principal Meridian, Wyoming.

The boundaries of Tract 46A are per Judgement Re: Hollis, Feeley and Rauscher, recorded in Book 234, Photo, Pages 922 through 927, in the Teton County Clerk's Office in Jackson, Wyoming; Judgement Re: United States and Joseph E. Zachritz and Constance Jent Zachritz, recorded in Book 234, Photo, Pages 1154 through 1164, in the Teton County Clerk's Office in Jackson, Wyoming; Judgement Re: United States and Julie Thomas Obering, recorded in Book 259, Pages 469 through 472, in the Teton County Clerk's Office in Jackson, Wyoming; and Boundary Line Agreement United States of America/Kindred, LLC, recorded in Book 577, Pages 25 through 27, in the Teton County Clerk's Office in Jackson, Wyoming. These boundaries are as depicted on Map of Survey No. T-148D, recorded in Book 2MAP, Page 216 and Map of Survey No. T-148E, recorded in Book 2MAP, Page 228, both in the Teton County Clerk's Office in Jackson, Wyoming.

Except as indicated hereon, the lots and areas are as shown on the plat accepted August 21, 1987.

Note: The banks and thread of the Snake River were determined by the method of photomapping from 2006 digital aerial photography.

Supplemental plat prepared by Olian T. Shockley, Cadastral Surveyor, pursuant to Special Instructions dated March 15, 2010 for Group No. 814, Wyoming and Supplemental Special Instructions No. 1 dated April 5, 2010 for Group no. 814, Wyoming.

UNITED STATES DEPARTMENT OF THE INTERIOR  
BUREAU OF LAND MANAGEMENT

Cheyenne, Wyoming

November 3, 2011

This plat, showing amended lottings, is based upon the official records and, having been correctly prepared in accordance with the regulations of this Bureau, is hereby accepted.

For the Director

John P. Lee  
Chief Cadastral Surveyor for Wyoming

JTE



SUPPLEMENTAL PLAT SHOWING TRACT SEGREGATION IN SECTIONS 23 AND 24



TOWNSHIP 41 NORTH, RANGE 117 WEST, OF THE SIXTH PRINCIPAL MERIDIAN, WYOMING.

SUPPLEMENTAL PLAT SHOWING TRACT SEGREGATION IN SECTION 24

This plat showing the corrected Tract number for Tract 52A is based on the plat accepted May 13, 2009.

This plat represents the segregation of Tract 52A from Tract 52 in Section 24, T. 41 N., R. 117 W., Sixth Principal Meridian, Wyoming.

The North boundary of Tract 52A is as described in Exhibit A attached to Judgement Between the United States of America and Iron Rock, Inc., A Wyoming Corporation, and Nancy Taylor, recorded in Book 235, Page 1-4, Teton County Clerk's Office in Jackson, Wyoming; and also depicted on Map of Survey No. D67A, recorded as Document 346III in Book 2MAP, Page 0217, Teton County Clerk's Office in Jackson, Wyoming.

The tract is bounded on the east by a segment of the 1963-65 adjusted original meander of the left bank of the Snake River as shown on the plats accepted February 26, 1970, August 21, 1987 and September 28, 2001. This segment is defined as that course from Point 10, Tract 53 to Angle Point 2 of the adjusted original meander of the left bank.

The South boundary of the tract is the line common to Tracts 52 and 53, as shown on the plat accepted August 21, 1987.

The West boundary (ambulatory) of the tract is the thread of the Snake River. Tract 52A is riparian, ownership includes the bed of the river in front of the tract, to the thread of the river.

Except as indicated hereon, the lottings, tracts and areas are as shown on the plat approved August 16, 1894 and plats accepted August 21, 1987 and September 28, 2001.

NOTE: The banks and thread of the Snake River were determined by the method of photomapping from 2006 digital aerial photography.

UNITED STATES DEPARTMENT OF THE INTERIOR  
BUREAU OF LAND MANAGEMENT

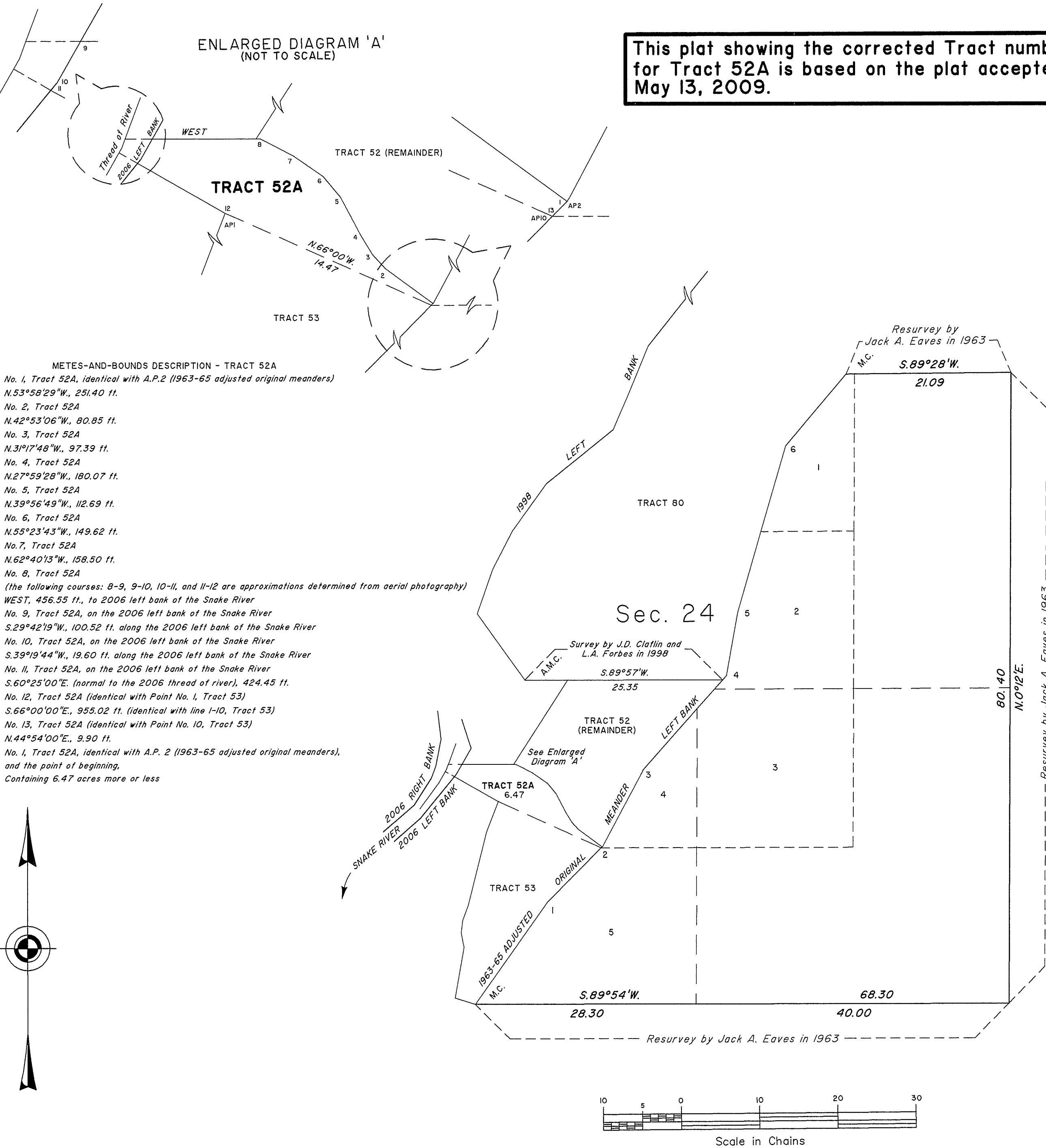
Cheyenne, Wyoming March 29, 2010

This plat, showing amended lottings, is based upon the official records and, having been correctly prepared in accordance with the regulations of this Bureau, is hereby accepted.

For the Director

*John P. Lee*

John P. Lee  
Chief Cadastral Surveyor for Wyoming





## TOWNSHIP 41 NORTH, RANGE 117 WEST, OF THE SIXTH PRINCIPAL MERIDIAN, WYOMING.

## DEPENDENT RESURVEY AND SURVEY OF RIPARIAN LANDS

Right Bank Snake River  
1963-65 Adjusted Original Meanders  
AP 3 Upstream

AP 3	N. 22°28' E.	6.12
SW Cor. Lot 20, Sec. 26	N. 22°28' E.	2.91
AP 4	N. 17°11' E.	5.02
AP 5	N. 2°08' W.	5.02
AP 6	N. 39°25' E.	8.02
AP 7	N. 9°47' E.	8.15
NW Cor. Lot 20, Sec. 26	N. 9°47' E.	0.89
AP 8	N. 9°47' E.	0.89

Present Right Bank Snake River  
AMC Upstream

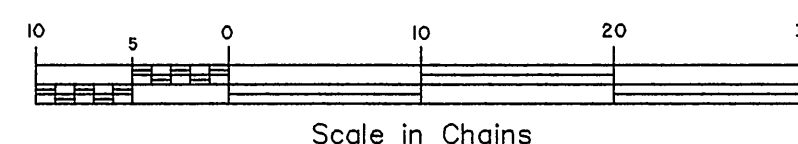
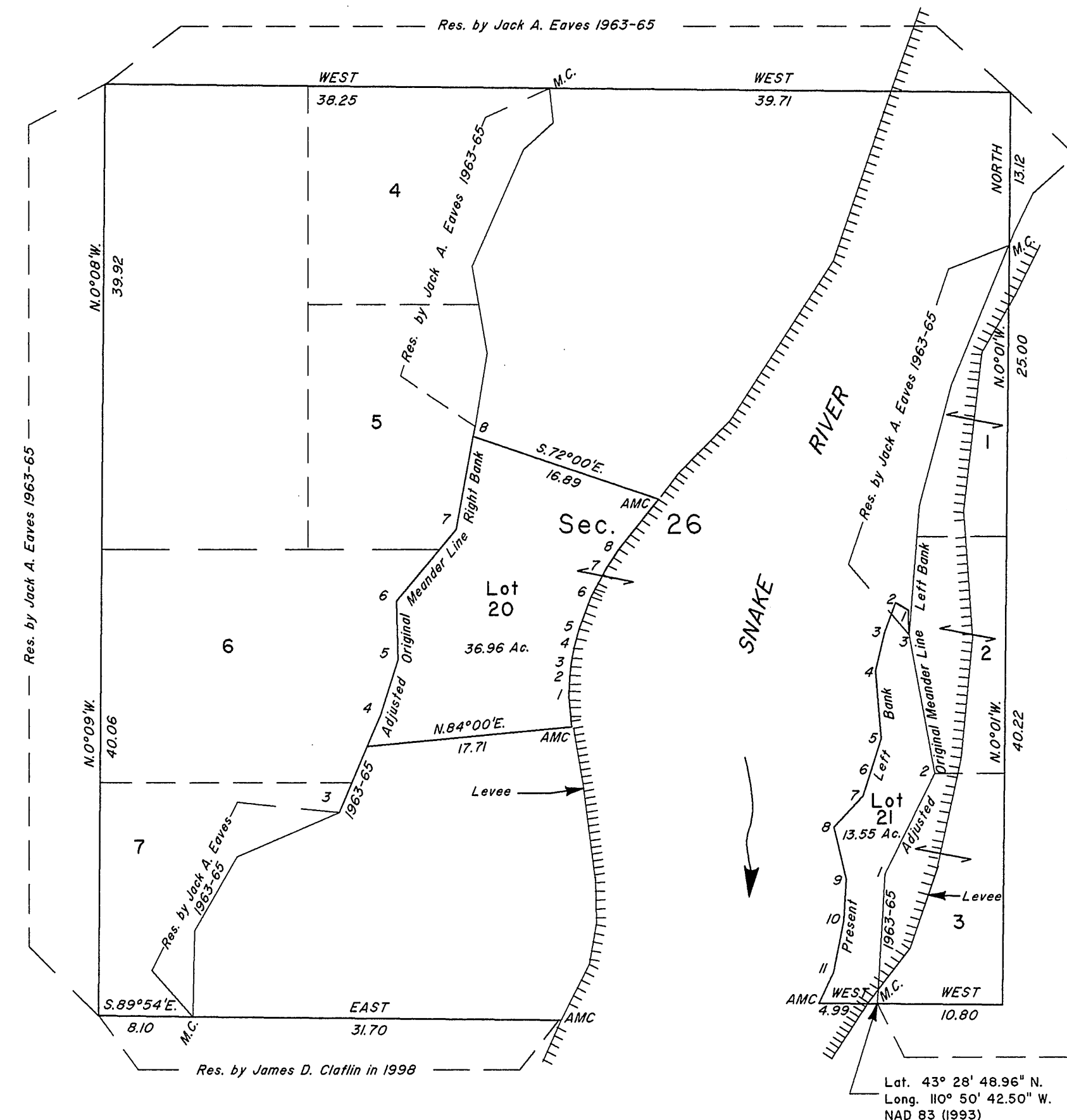
AMC	N. 3° 28' W.	2.63
1	N. 1° 10' E.	1.63
2	N. 5° 54' E.	1.33
3	N. 10° 05' E.	1.46
4	N. 16° 04' E.	1.45
5	N. 19° 11' E.	2.95
6	N. 28° 02' E.	2.60
7	N. 32° 43' E.	2.17
8	N. 38° 00' E.	5.52
AMC	N. 38° 00' E.	5.52

Left Bank Snake River  
1963-65 Adjusted Original Meanders  
M.C. Upstream

M.C.	N. 2°52' E.	11.15
AP 1	N. 25°49' E.	9.67
AP 2	N. 11°03' W.	12.10
AP 3	N. 11°03' W.	12.10

Present Left Bank Snake River  
AP 3 Downstream

AP 3	N. 1° 56' W.	2.05
1	N. 58° 05' W.	1.29
2	S. 19° 47' W.	2.76
3	S. 12° 44' W.	3.36
4	S. 5° 16' E.	5.84
5	S. 16° 44' W.	2.99
6	S. 17° 54' W.	2.20
7	S. 42° 33' W.	3.62
8	S. 13° 46' E.	4.63
9	S. 3° 16' W.	3.49
10	S. 10° 33' W.	4.52
11	S. 24° 17' W.	2.97
AMC	EAST	4.99
MC	EAST	4.99



A history of surveys is contained in the field notes.

This plat represents the dependent resurvey of portions of the adjusted right and left banks of the Snake River designed to restore the corners in their true original locations according to the best available evidence, and the survey of riparian partition lines, and a portion of the present right and left banks of the Snake River, section 26, T. 41 N., R. 117 W., Sixth Principal Meridian, Wyoming.

Except as indicated hereon, the lottings and areas are as shown on the plat approved August 16, 1894, and April 2, 1903.

Survey executed by Lynn A. Forbes, Cadastral Surveyor, beginning May 28, 2002, and completed September 18, 2006, pursuant to Special Instructions dated April 2, 1998, and Supplemental Special Instructions dated September 25, 1998, and Amended Supplemental Special Instructions dated April 28, 2000, for Group No. 652, Wyoming.

UNITED STATES DEPARTMENT OF THE INTERIOR  
BUREAU OF LAND MANAGEMENT

Cheyenne, Wyoming

January 13, 2010

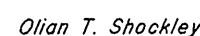
This plat is strictly conformable to the approved field notes, and the survey, having been correctly executed in accordance with the requirements of law and the regulations of this Bureau, is hereby accepted.


For the Director

*John P. Lee*

John P. Lee  
Chief Cadastral Surveyor for Wyoming

SUPPLEMENTAL PLAT SHOWING TRACT SEGREGATION IN SECTION 24



  
John P. Lee  
Chief Cadastral Surveyor for Wyoming

TOWNSHIP 41 NORTH, RANGE 117 WEST, OF THE SIXTH PRINCIPAL MERIDIAN, WYOMING.  
DEPENDENT RESURVEY AND SURVEY OF RIPARIAN LANDS

Right Bank Snake River  
1963-65 Record Adjusted Original Meanders

- M.C. 34|35 Upstream  
N.65°01'E., 3.99  
1 N.16°56'E., 10.99  
2 N.13°41'E., 15.98  
3 N.47°51'W., 8.00  
4 N.3°25'E., 8.99  
5

Lat. 43°28'47.8"N.  
Long. 110°51'42.6"W.  
NAD 83

Sec. 26

Sec. 34

Sec. 35

Sec. 36

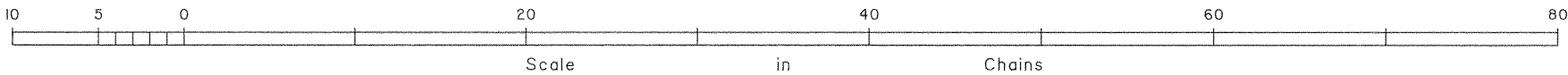
Reference should be made to Sheet No. 1 for survey information.

UNITED STATES DEPARTMENT OF THE INTERIOR  
BUREAU OF LAND MANAGEMENT

Cheyenne, Wyoming September 28, 2001

This plat is strictly conformable to the approved field notes, and the survey, having been correctly executed in accordance with the requirements of law and the regulations of this Bureau, is hereby accepted.

For the Director  
*John P. Lee*  
Chief Cadastral Surveyor for Wyoming

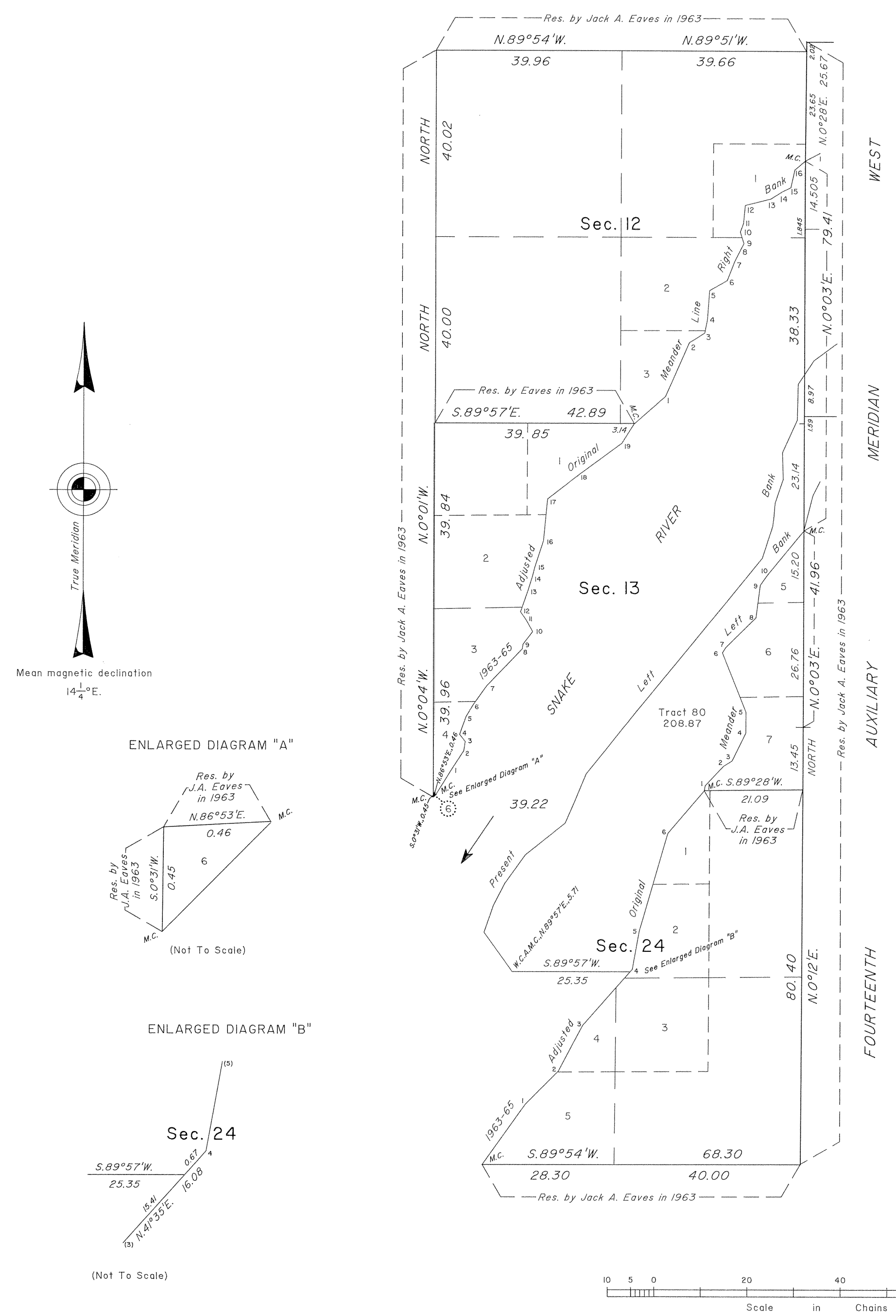


Mean magnetic declination  
14 1/4° E.

Present Right Bank Snake River  
A.M.C. Upstream

- N.27°00'E., 3.25  
N.30°06'E., 5.22  
N.67°55'E., 4.23  
N.75°19'E., 2.56  
N.80°57'E., 4.21  
N.65°03'E., 3.05  
N.51°32'E., 2.15  
N.33°24'E., 2.45  
N.12°58'W., 4.29  
N.5°40'W., 3.35  
N.2°36'E., 4.51  
N.6°57'W., 6.52  
N.35°57'W., 2.61  
N.20°53'E., 15.02  
A.M.C.

TOWNSHIP 41 NORTH, RANGES 117 WEST, OF THE SIXTH PRINCIPAL MERIDIAN, WYOMING.  
SURVEY OF RIPARIAN LANDS



PRESENT LEFT BANK - SNAKE RIVER

A.M.C.

N.35°54'W.,	10.40
N.19°14'E.,	6.05
N.27°13'E.,	5.43
N.35°54'E.,	7.51
N.51°07'E.,	10.97
N.23°30'E.,	4.54
N.22°17'E.,	6.92
N.38°36'E.,	16.69
N.39°34'E.,	30.12
N.39°13'E.,	12.95
N.17°52'E.,	7.19
N.7°01'E.,	2.08
N.4°38'E.,	2.93
N.18°25'E.,	5.46
N.1°41'W.,	5.77
N.24°14'E.,	7.73
N.1°14'E.,	7.74
N.33°54'E.,	2.33

E. Bdy., Sec. 12

1963-65 ADJUSTED ORIGINAL MEANDERS  
LEFT BANK - SNAKE RIVER

M.C., Secs. 24 & 25

N.35°17'E.,	15.87
N.44°54'E.,	10.05
N.28°05'E.,	11.07
N.41°35'E.,	15.41
N.41°35'E.,	0.67
N.10°07'E.,	8.15
N.16°09'E.,	22.14
N.40°15'E.,	12.06

M.C., Secs. 13 & 24

N.9°32'E.,	1.10
N.43°04'E.,	5.80
N.58°05'E.,	2.10
N.26°03'E.,	6.69
N.0°01'E.,	4.49
N.22°01'W.,	13.68
N.33°05'E.,	1.30
N.45°34'E.,	9.09
N.7°32'E.,	6.99
N.35°04'E.,	2.60
N.39°34'E.,	12.29

M.C., Secs. 13 & 18

A history of surveys is contained in the field notes.

This plat, in 2 sheets, represents the dependent resurvey of a portion of the subdivisonal lines, and a portion of the adjusted original meander line of the right and left banks of the Snake River, designed to restore the corners in their true original locations according to the best available evidence, and the survey of the riparian partition lines, and a portion of the meanders of the present right bank of the Snake Rivers, T. 41 N., R. 117 W., Sixth Principal Meridian, Wyoming.

Except as indicated hereon, the lottings and areas are as shown on the plat approved April 2, 1903.

Survey executed by James D. Claflin and Lynn A. Forbes, Cadastral Surveyors, beginning September 26, 1998, and completed May 11, 1999, pursuant to Special Instructions dated April 2, 1998, and Supplemental Special Instructions dated September 25, 1998, for Group No. 652, Wyoming.

UNITED STATES DEPARTMENT OF THE INTERIOR  
BUREAU OF LAND MANAGEMENT

Cheyenne, Wyoming September 28, 2001

This plat is strictly conformable to the approved field notes, and the survey, having been correctly executed in accordance with the requirements of law and the regulations of this Bureau, is hereby accepted.

For the Director  
*John P. Lee*  
Chief Cadastral Surveyor for Wyoming

# SURVEY OF RIPARIAN LANDS

Field monumentation and preparation of field notes were not executed during this survey. This plat contains the entire survey record. The metes and bounds descriptions of the tracts shown hereon are available in the group file for Group No. 275, Wyoming.

Cheyenne, Wyoming August 21, 1987

This plat, showing amended lottings, is based upon the official records and the additional use of aerial photography and, having been correctly prepared in accordance with the regulations of this Bureau, is hereby accepted.

For the Director

Richard L. Oakes

Chief Cadastral Surveyor for Wyoming



## STANDARD

PARALLEL

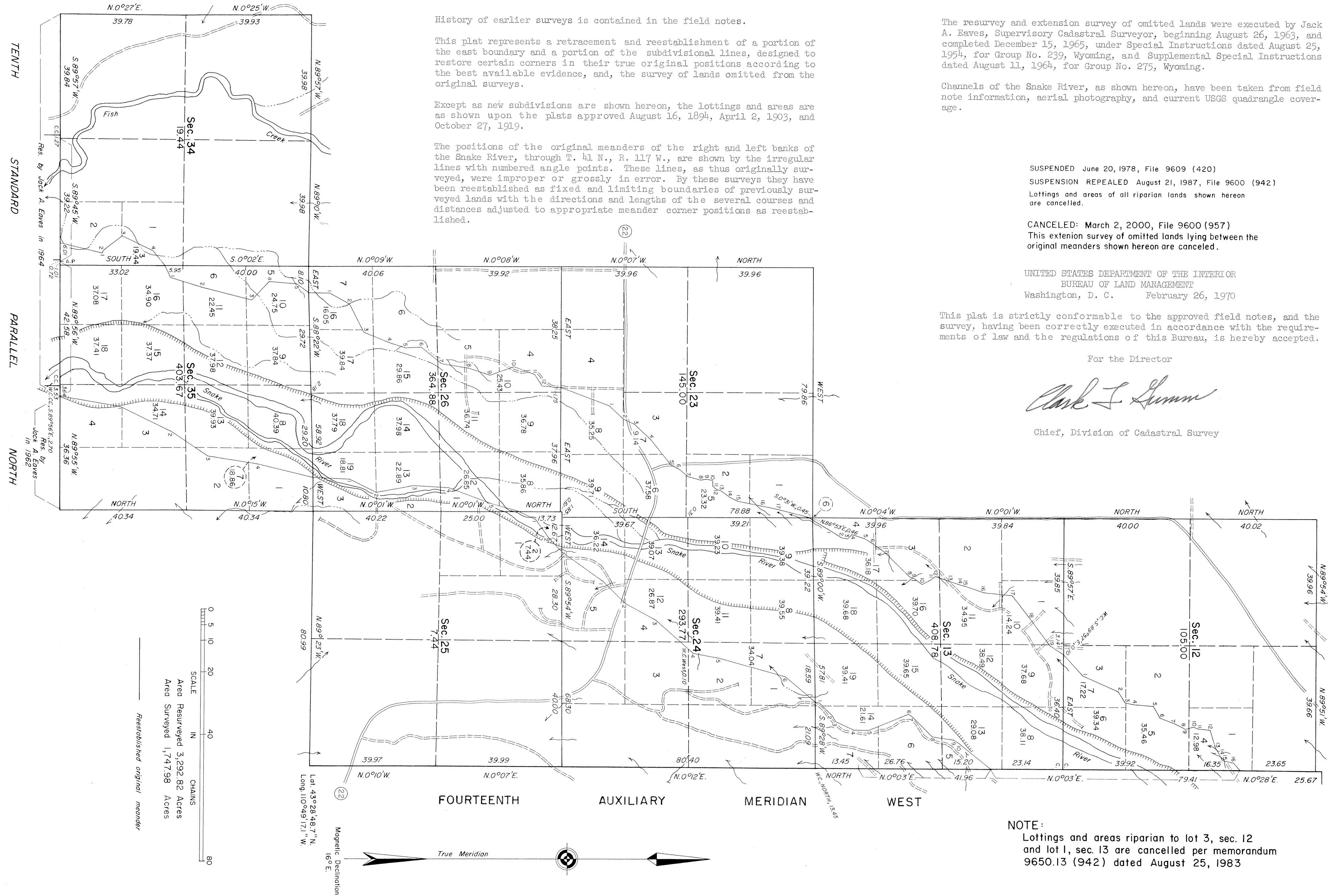
NORTH

2681 E



# TOWNSHIP 41 NORTH, RANGE 117 WEST OF THE SIXTH PRINCIPAL MERIDIAN, WYOMING.

## SURVEY OF OMITTED LANDS



History of earlier surveys is contained in the field notes.

This plat represents a retracement and reestablishment of a portion of the east boundary and a portion of the subdivisional lines, designed to restore certain corners in their true original positions according to the best available evidence, and, the survey of lands omitted from the original surveys.

Except as new subdivisions are shown hereon, the lottings and areas are as shown upon the plats approved August 16, 1894, April 2, 1903, and October 27, 1919.

The positions of the original meanders of the right and left banks of the Snake River, through T. 41 N., R. 117 W., are shown by the irregular lines with numbered angle points. These lines, as thus originally surveyed, were improper or grossly in error. By these surveys they have been reestablished as fixed and limiting boundaries of previously surveyed lands with the directions and lengths of the several courses and distances adjusted to appropriate meander corner positions as reestablished.

The resurvey and extension survey of omitted lands were executed by Jack A. Eaves, Supervisory Cadastral Surveyor, beginning August 26, 1963, and completed December 15, 1965, under Special Instructions dated August 25, 1954, for Group No. 239, Wyoming, and Supplemental Special Instructions dated August 11, 1964, for Group No. 275, Wyoming.

Channels of the Snake River, as shown hereon, have been taken from field note information, aerial photography, and current USGS quadrangle coverage.

SUSPENDED June 20, 1978, File 9609 (420)

SUSPENSION REPEALED August 21, 1987, File 9600 (942)

Lottings and areas of all riparian lands shown hereon are cancelled.

CANCELED: March 2, 2000, File 9600 (957)

This extension survey of omitted lands lying between the original meanders shown hereon are canceled.

UNITED STATES DEPARTMENT OF THE INTERIOR  
BUREAU OF LAND MANAGEMENT  
Washington, D. C. February 26, 1970

This plat is strictly conformable to the approved field notes, and the survey, having been correctly executed in accordance with the requirements of law and the regulations of this Bureau, is hereby accepted.

For the Director

*Clark I. Sumner*

Chief, Division of Cadastral Survey

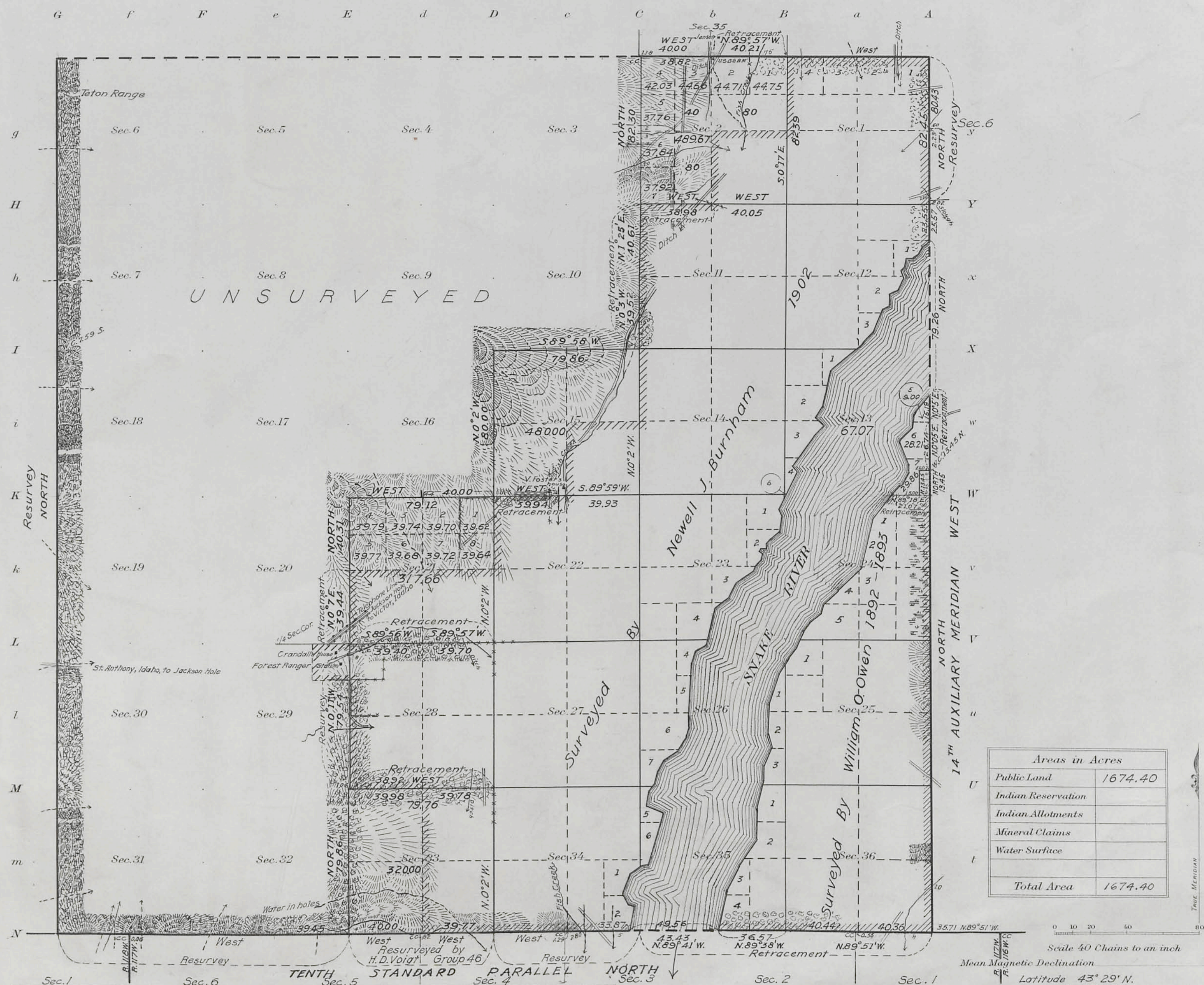
NOTE:

Lottings and areas riparian to lot 3, sec. 12 and lot 1, sec. 13 are cancelled per memorandum 9650.13 (942) dated August 25, 1983



Township N<sup>o</sup> 41 North Range N<sup>o</sup> 117 West of the Sixth Principal Meridian, Wyoming

Survey accepted March 29, 1920 G.L.O.



Surveys Designated	By Whom Surveyed	Group	Amount of Surveys	When Surveyed
		No. Date	Mls. chs. lks.	Begin Completed
10 <sup>th</sup> Granddary Parallel N.	Hans D. Voigt	46 Jan. 29, 1917	79 77	Sept. 20, 1918 Sept. 20, 1918
14 <sup>th</sup> Auxiliary Meridian W.	" " "	" " "	41 93	" 26 " " 26 "
Subdivisions	" " "	" " "	4 57 36	" 13 " " 26 "
"	" " "	" " "	5 41 45	" " " " 19 "
" Resurv.	" " "	" " "	79 54	" 18 " " 18 "
Meanders	" " "	" " "	66 20	" 26 " " 26 "
Connections	" " "	" " "	2 24	" 13 " " 19 "
North Township Line	Jaekel and Voigt	4 May 3, 1911	40 00	Oct. 4, 1911 Oct. 4, 1911
14 <sup>th</sup> Auxiliary Meridian	William O. Owen	250 Sept. 2, 1892	55 17	Oct. 2, 1892 Oct. 4, 1892

The above map of Township No. 41 North Range No. 117 West of the Sixth Principal Meridian Wyoming is strictly conformable to the field notes of the survey thereof on file in this office, which have been examined and approved

U. S. Surveyor General's Office.

Cheyenne, Wyoming October 27, 1919

Charles L. Becker  
Surveyor General.



(4-675<sup>a</sup>)

accession no. 4590

*G*      *f*      *F*      *e*      *E*      *d*      *D*      *c*      *C*      *b*      *B*      *a*      *A*

$N$	$n$	$O$	$o$	$P$	$p$	$Q$	$q$	$R$	$r$	$S$	$s$	$T$	$t$
-----	-----	-----	-----	-----	-----	-----	-----	-----	-----	-----	-----	-----	-----

Public Land 6848.68 Acres; N.E. 1/4 N.E. 1/4 Sec. 29 40.00 Acres;

Total number of Acres 6888,68

Surveys Designated	By Whom Surveyed	Date of Contract	Amount of Surveys M. Ch <sup>s</sup> Lc <sup>s</sup>	When Surveyed
Township lines Subdivisions		N <sup>o</sup>		
	Newell J. Burnham	23 <sup>d</sup> June 1902		Aug. 6-14, 1902

This supplemental plat is made in conformity with letter "E", dated Nov. 16, 1903, from the Hon. Commissioner of the General Land Office.

Scale 10 Chains to an Inch.

Supplemental Plat

The above Map of Township N.<sup>o</sup> 41 North, of Range N.<sup>o</sup> 117 West of the  
6<sup>th</sup> Principal Meridian, Wyoming, is strictly conformable to the field  
notes of the survey thereof on file in this Office, which have been examined and approved.

Surveyor General's Office, Cheyenne, Wyo., Nov. 30, 1903

J. H. Thompson  
Sur. Genl

THE NORRIS PETERS CO., LTD., WASHINGTON, D. C.

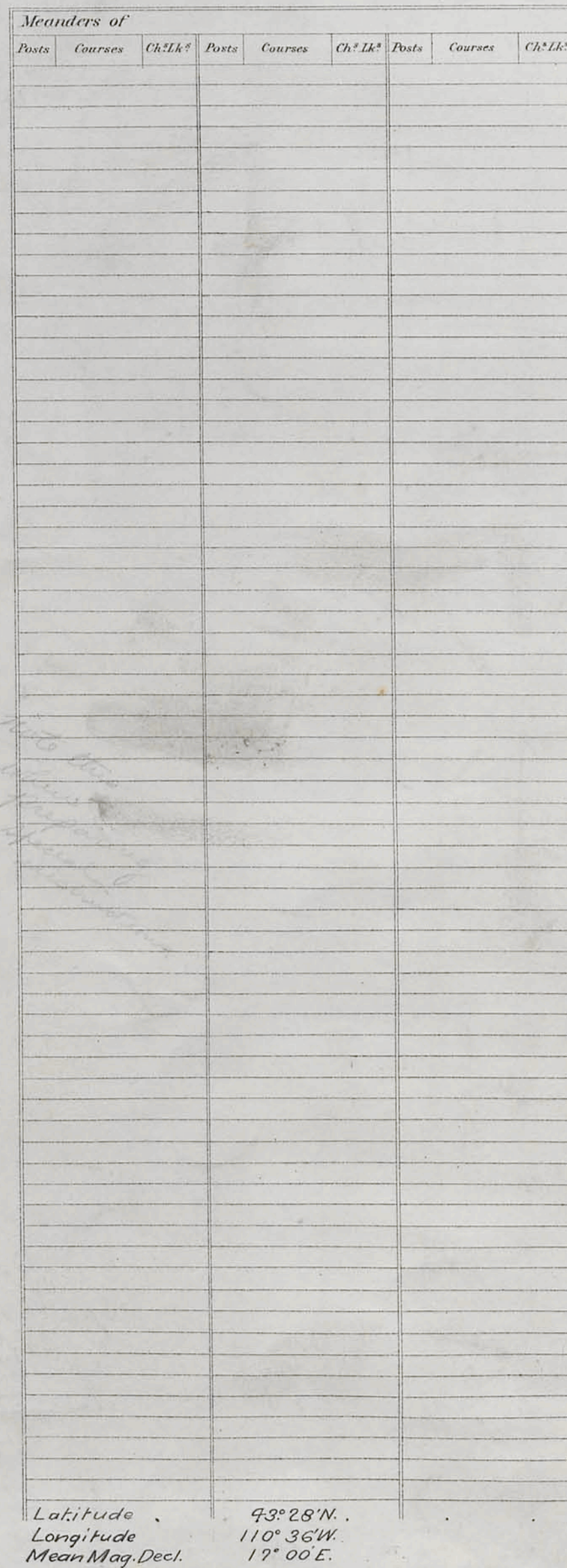
2681-B

41-117

Supplemental plat approved by  
the Gen. Commissioner in his letter  
E. Dec. 9, 1903. Triplicate thereof  
forwarded to Local Land Office  
Dec. 12, 1903.



*Fractional Township N<sup>o</sup> 41 North, Range N<sup>o</sup> 117 West of the 6<sup>th</sup> Principal Meridian*



Surveys Designated	By Whom Surveyed	Date of Contract	Amount of Surveys		When Surveyed
			M.	Ch. <sup>2</sup>	
North Township line	Newell J. Burnham	N <sup>8</sup> 288 June 25, 1901	1	90 00	July 17, 1902
Subdivisions	" " "	" " "	22	58 10	Aug. 6-14, "
Meanders	" " "	" " "	5	51 66	Aug. 14, "
Reur. E. & Grand S. Bds.	" " "	" " "	11	4 42	July 15-17, "
Refr. S. Bdry	" " "	" " "	2	00 80	July 12, "
Connections	" " "	" " "	2	2 2	Aug. 9, "
East Tp. Line	Wm. O. Owen	250. Sept. 2, 1892	6	00 00	Oct. 2-4, 1892
Subdivisions	" " "	" " "	4	5 2	July 15-16, 1893
Meanders	" " "	" " "	3	2 6 72	July 16, 1893

The above <sup>Fractural</sup> ~~strip~~ of township, N. 29 41 North of Range, N. 29 112 West of the 6<sup>th</sup> Principal Meridian, Wyoming, is shutty conformable to the field notes of the survey thereof on file in this Office, which have been examined and approved.

Surveyor General's Office, Stephen P. Hannon  
Cheyenne, Wyo.; April 2, 1903. Sur. Gen.

Triplicate plat forwarded Sept. 1, 1903  
 Survey accepted by the Hon. Commissioner  
 in his letter "E", dated Aug. 27, 1903

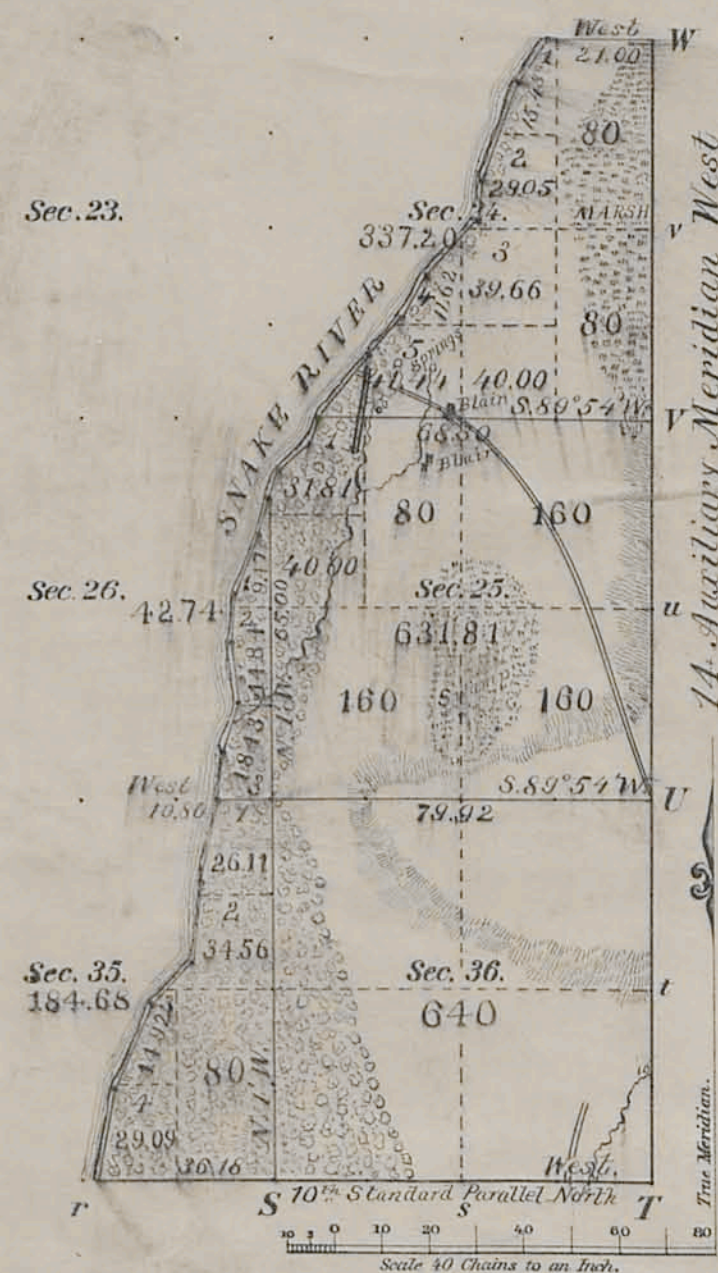
41-117

2681-A



Township N<sup>o</sup> 41 North Range N<sup>o</sup> 11 West of the 6<sup>th</sup> Principal Meridian

G f F e E d D c C b B a A  
 g Sec. 6. Sec. 5. Sec. 4. Sec. 3. Sec. 2. Sec. 1. y  
 H Y  
 h Sec. 7. Sec. 8. Sec. 9. Sec. 10. Sec. 11. Sec. 12. x  
 I X  
 i Sec. 13. Sec. 14. Sec. 15. Sec. 16. Sec. 17. Sec. 18. w  
 K W  
 k Sec. 19. Sec. 20. Sec. 21. Sec. 22. Sec. 23. v  
 L V  
 l Sec. 24. Sec. 25. Sec. 26. Sec. 27. Sec. 28. u  
 M U  
 m Sec. 29. Sec. 30. Sec. 31. Sec. 32. Sec. 33. Sec. 34. t  
 N n O o P p Q q R r S 10° Standard Parallel North T



The above Map of Township N<sup>o</sup> 41 North of Range N<sup>o</sup> 117 West, of the 6<sup>th</sup> Principal Meridian, Wyoming, is strictly conformable to the field notes of the survey thereof on file in this Office, which have been examined and approved.

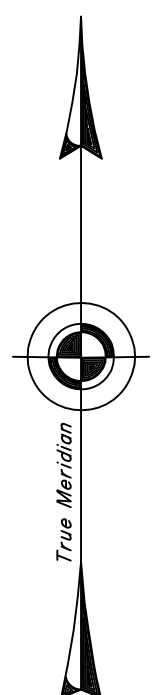
*Surveyor General's Office,  
Cheyenne Wyo., August 16, '94*

Perry & Liekeford  
Sur. & Genl.



TOWNSHIP 41 NORTH, RANGE 117 WEST OF THE SIXTH PRINCIPAL MERIDIAN, WYOMING.

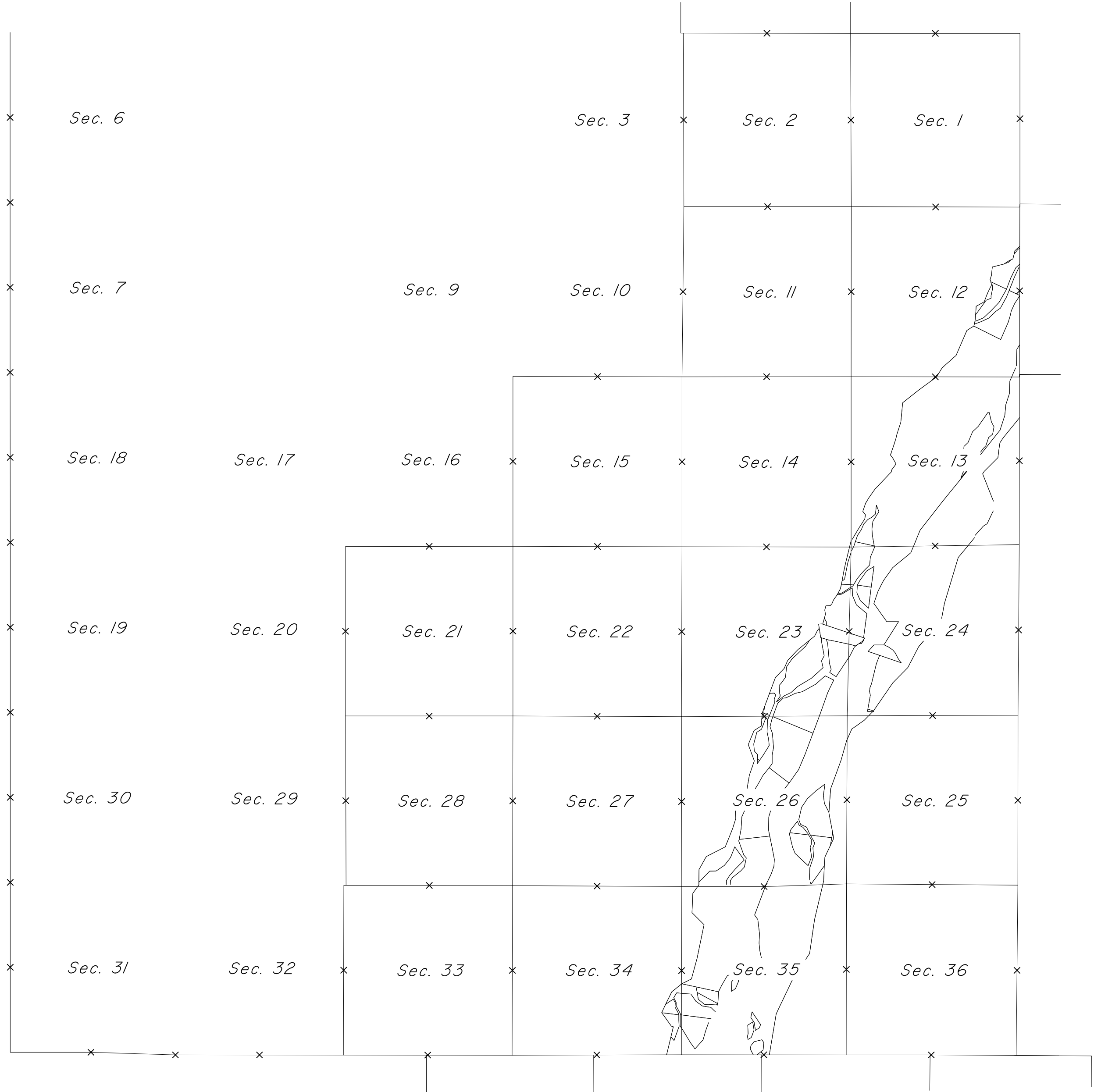
INDEX TO CORNER REMONUMENTATION WITHOUT SURVEY



NOT TO SCALE

LEGEND

Remonumented Corner as Indicated



TENTH STANDARD PARALLEL NORTH

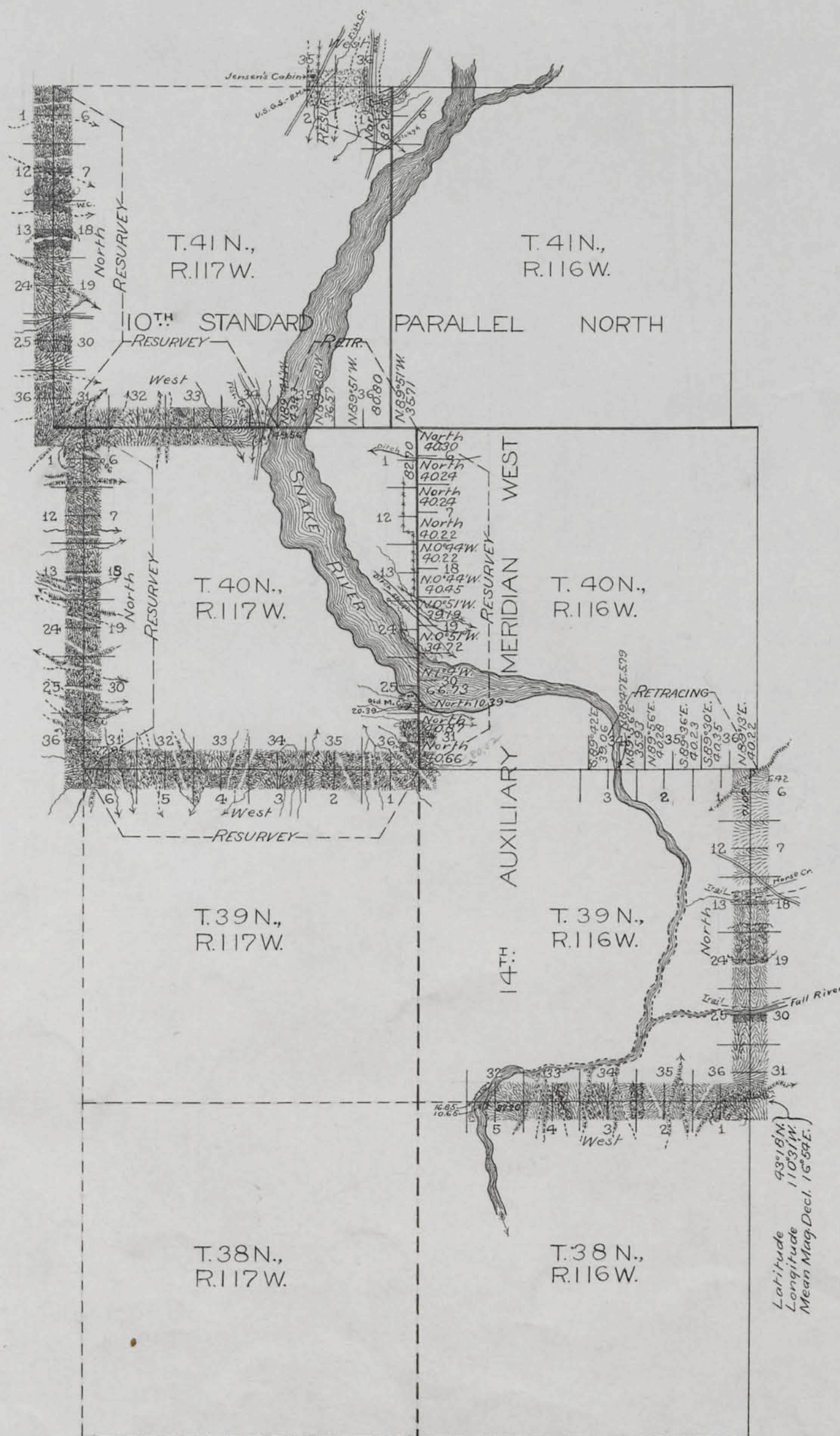


4809

# TOWNSHIP EXTERIORS

Scale: 1 inch  $\approx$  160 chains.

Table of Mileage			
Surveys Designated	Amount Mls. Chs.	Lks.	When Surveyed
Standard Lines Retraced	2 36 51		July 12, 1902
" " Resurveyed	11 5 15		" 3-17, "
Township " Retraced	3 1 86		" 1, "
" " Resurveyed	18 3 35		" 8-16, "
" " Surveyed	12 31 7		June 16-July 17, "
Connections	6	48	July 3-14, "



This Plat  
of the  
South and East boundaries of T. 39N., R. 116W.; and  
a part of the North boundary of T. 41N., R. 117W.; the  
Retracing of  
The 10th Standard Parallel North through a part of  
Rgs. 116 and 117W.; and a part of the South boundary  
of T. 40N., R. 116W.; the  
Resurvey of  
The 14th Auxiliary Meridian West through T. 40N., and  
a part of T. 41N.; a part of the 10th Standard Parallel  
North through R. 117W.; the North boundary of  
T. 39N., R. 117W.; the West boundary of T. 40N., R. 117W.;  
and the West boundary of T. 41N., R. 117W. of the  
6th Principal Meridian,  
Wyoming,  
is strictly conformable to the field notes of the survey thereof  
by  
Newell J. Burnham, U.S.D.S.,  
under his  
Contract N<sup>o</sup>. 288,  
dated June 25, 1901,  
which have been examined, approved and filed in this office.  
U.S. Surv. Gen'l's Office,  
Cheyenne, Wyoming,  
April 2, 1903

*Alpheus P. Hancock*  
U.S. Surv. Gen'l.

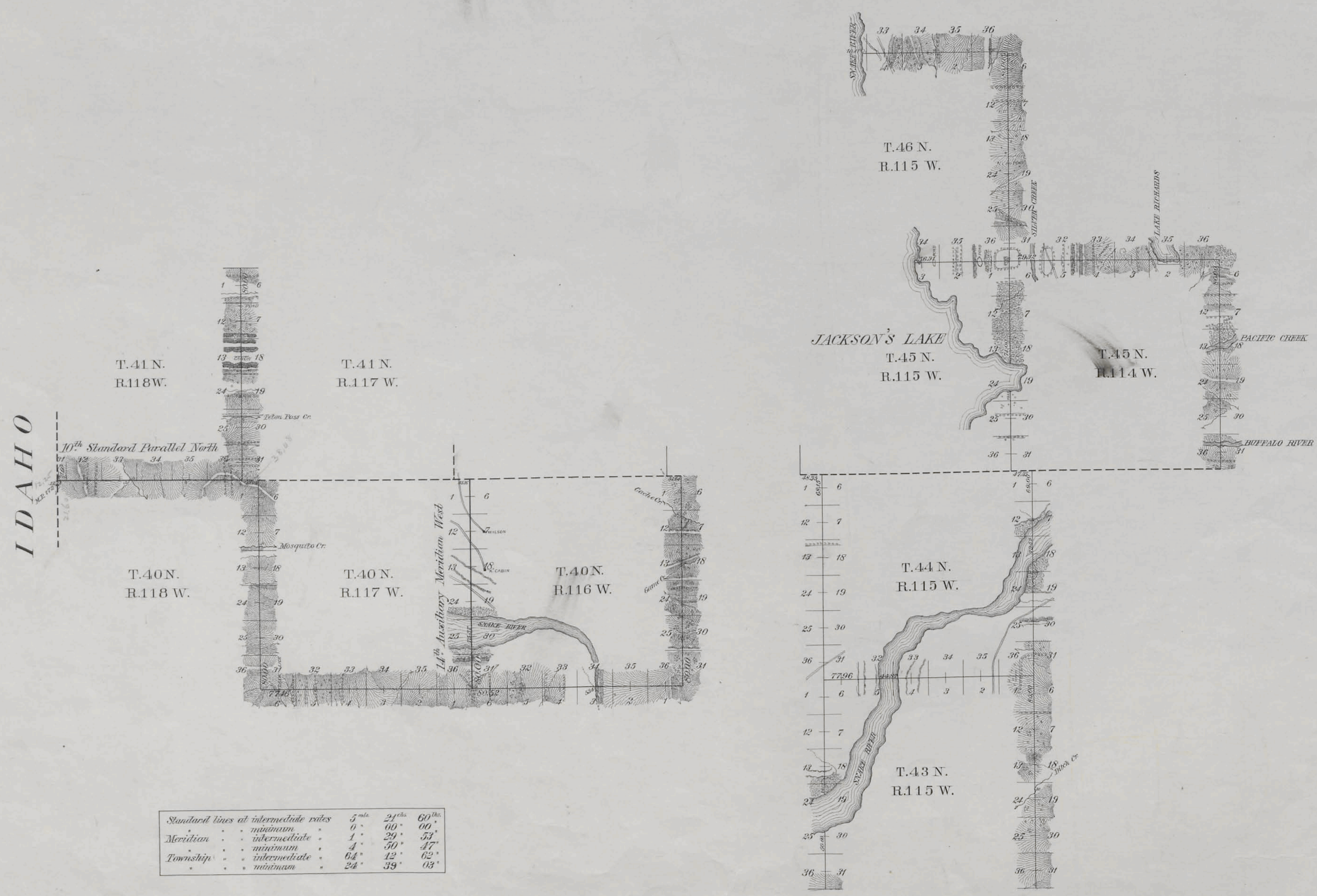
Survey accepted by the Hon. Commissioner  
in his letter "C", dated Aug. 27, 1903



Indued

# EXTERIOR LINES.

Scale 2 miles to 1 inch. Magnetic Variation East.



Standard lines at intermediate rates	5	24	60
Meridian	0	00	00
Township	1	24	53
	4	50	47
	64	12	62
	24	39	03

Survey Designated	By Whom Surveyed	Date of Contract	Amount of Surveys	When Surveyed	Magnetic Declination
10 <sup>th</sup> Stand. Par. N.	Wm. O. Owen	Sept. 2, 1892	5 21 60	Sept. 29-30, 1892	18° 28' East
14 <sup>th</sup> Guide Mer. W.	" " "	" " "	6 00 00	May 17, 1893	18° 06' "
Township Lines	" " "	" " "	88 14 65	May 18-July 17, 93	18° 00' 18' 24' "

I hereby certify that the above diagram of the Exterior lines of Townships 40 North, Range 116 West, Townships 43, 44 and 46 North, Range 115 West, Townships 40 and 41 North, Range 117 West, Township 45 North, Range 114 West, the 10<sup>th</sup> Standard Parallel North, the 14<sup>th</sup> Auxiliary Meridian, west of the Principal Meridian, Wyoming, is strictly conformable to the field notes of survey thereof on file in this office, which have been examined and approved.

Surveyor General's Office  
Cheyenne Wyo. Aug. 16, 1894.

*Permy Bickford*  
U.S. Surveyor General.



