

## T. 42 N., R. 113 W., Sixth Principal Meridian, Wyoming, Field Note Links

Plat Accession Number(s)	Year(s) of Survey	
		Township Subdivision Plats
8742	2017-18	<a href="https://www.wy.blm.gov/cadastral/countyplats/teton/fieldnotes/t42nr113w_gp975fn.pdf">https://www.wy.blm.gov/cadastral/countyplats/teton/fieldnotes/t42nr113w_gp975fn.pdf</a>
7963	1992	<a href="https://www.wy.blm.gov/cadastral/countyplats/teton/fieldnotes/t42nr113w_gp573fn.pdf">https://www.wy.blm.gov/cadastral/countyplats/teton/fieldnotes/t42nr113w_gp573fn.pdf</a>
7690	1982	<a href="https://www.wy.blm.gov/cadastral/countyplats/teton/fieldnotes/t42nr113w_gp437fn.pdf">https://www.wy.blm.gov/cadastral/countyplats/teton/fieldnotes/t42nr113w_gp437fn.pdf</a>
-	1967	<a href="https://www.wy.blm.gov/cadastral/countyplats/teton/fieldnotes/t42nr113w_gp262fn.pdf">https://www.wy.blm.gov/cadastral/countyplats/teton/fieldnotes/t42nr113w_gp262fn.pdf</a>
4868	1907	<a href="https://www.wy.blm.gov/cadastral/countyplats/teton/fieldnotes/t42nr113w_c324fn.pdf">https://www.wy.blm.gov/cadastral/countyplats/teton/fieldnotes/t42nr113w_c324fn.pdf</a>
		Township Exterior Plats
4535	1892	<a href="https://www.wy.blm.gov/cadastral/countyplats/teton/fieldnotes/ext2632.pdf">https://www.wy.blm.gov/cadastral/countyplats/teton/fieldnotes/ext2632.pdf</a>

TOWNSHIP 42 NORTH, RANGE 113 WEST, OF THE SIXTH PRINCIPAL MERIDIAN, WYOMING.

DEPENDENT RESURVEY AND SURVEY

Lat 43°37'17.975" N  
Long 110°28'22.210" W  
NAD83 (2011)(EPOCH:2010)

MEANDERS OF THE GROS VENTRE RIVER

Left Bank	Right Bank
From the point for the special meander cor. on the L. Bank of the Gros Ventre River on the N-S centerline of the NE/4SW/4NE/4 of Sec. 18	From the true point for the special meander cor. on the R. Bank of the Gros Ventre River on the N-S centerline of the NE/4SW/4NE/4 of Sec. 18, identical with Cor. No. 18, Tract 38
Downstream through Sec. 18	Downstream through Sec. 18
N 70°01'W, 1.78 chs.	N 79°52'W, 1.60 chs.
N 50°44'W, 3.41 chs.	N 44°12'W, 1.65 chs.
N 35°01'W, 0.26 chs.	SMC E-W CEN. LINE NE/4
N 35°01'W, 0.90 chs.	N 44°12'W, 0.80 chs.
SMC N-S CEN. LINE NW/4NE/4	N 34°56'W, 2.23 chs.
N 35°01'W, 1.92 chs.	N 41°36'W, 0.62 chs.
N 31°47'W, 4.90 chs.	SMC N-S CEN. LINE NW/4NE/4
N 19°54'W, 2.98 chs.	N 41°36'W, 0.97 chs.
N 19°17'W, 0.80 chs.	N 28°01'W, 3.09 chs.
SMC E-W CEN. LINE NW/4NE/4	N 21°46'W, 3.99 chs.
N 19°17'W, 3.98 chs.	SMC E-W CEN. LINE NW/4NE/4
N 46°26'W, 3.24 chs.	N 21°46'W, 6.04 chs.
N 88°43'W, 1.22 chs.	N 51°52'W, 3.00 chs.
Point for the special meander cor. on the L. Bank of the Gros Ventre River, on the N-S center line of Sec. 18.	N 77°04'W, 1.70 chs.
	SMC N-S CEN. LINE SEC. 18
	N 77°04'W, 0.49 chs.
	S 86°21'W, 5.84 chs.
	N 80°01'W, 3.66 chs.
	True point for the meander cor. on the R. Bank of the Gros Ventre River, identical with Cor. No. 1, H.E.S. No. 196 and Cor. No. 17, Tract 38

TRACT 38

Metes-and-Bounds	
COR. 1 (C-N-NE 1/64 S 18)	N 0°13'E 5.01
COR. 2	N 52°57'W 4.94
COR. 3	N 48°34'W 3.08
Int. line between secs. 7 and 18	N 48°34'W 2.90
COR. 4	N 48°40'W 1.70
COR. 5	N 56°59'W 3.40
COR. 6	N 65°17'W 1.70
COR. 7	N 67°58'W 2.91
COR. 8	N 63°03'W 1.66
COR. 9	N 49°45'W 5.18
COR. 10	N 43°14'W 1.64
COR. 11	N 32°51'W 4.31
COR. 12	N 50°40'W 1.43
COR. 13	N 58°06'W 3.66
COR. 14	S 89°51'W 3.62
COR. 15	S 51°24'E 4.92
COR. 16 (Cor. 4, HES 196)	S 0°18'W 17.14
COR. 17 (MC B Cor. L, HES 196)	Thence upstream along right bank meanders to
COR. 18 (SMC N-S Center line NE/4SW/4NE/4 S 18)	N 0°19'E 1.45
COR. 19 (C-E-W-NE 1/256 S 18)	N 0°19'E 10.00
COR. 20 (C-E-W-NE 1/256 S 18)	S 89°46'E 4.98
COR. 1 (C-N-NE 1/64 S 18)	

A history of surveys is contained in the field notes.

This plat represents the dependent resurvey of a portion of Homestead Entry Survey No. 196, a portion of the subdivisional lines and the subdivision of section 18, designed to restore the corners in their true original locations according to the best available evidence, and the survey of the subdivision of section 18 and the meanders of the Gros Ventre River, and the metes-and-bounds survey of Tract 38, T. 42 N., R. 113 W., Sixth Principal Meridian, Wyoming.

Except as indicated hereon, the areas are as shown on the plat approved February 14, 1908.

Survey executed by Lynn A. Forbes, Cadastral Surveyor (USFS), beginning July 18, 2017, and completed June 26, 2018, pursuant to special instructions and assignment instructions dated May 22, 2017, and supplemental special instructions June 19, 2018, for Group No. 975, Wyoming.

Note: NM indicates corner not monumented.

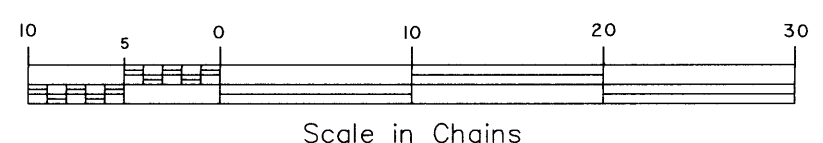
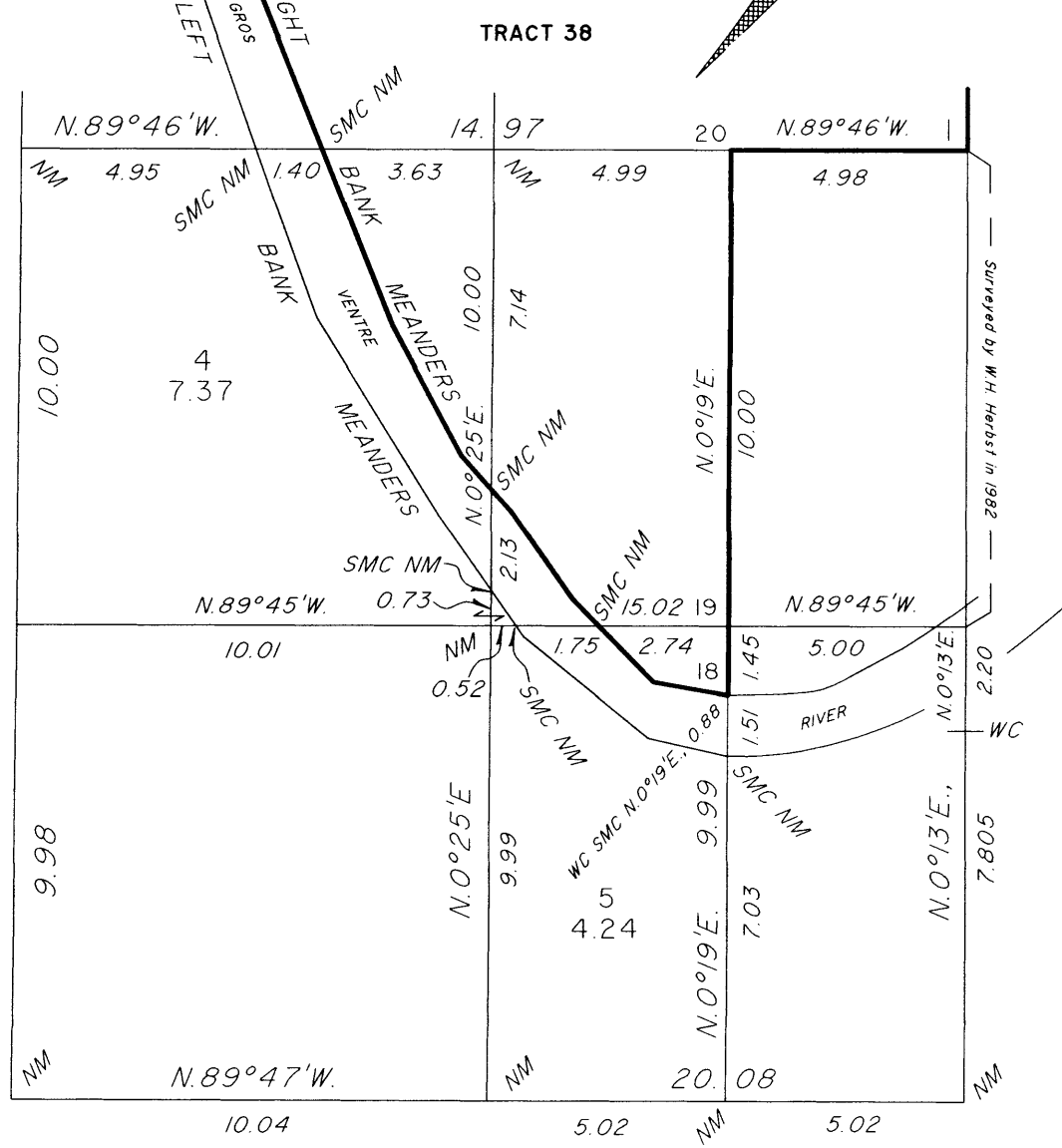
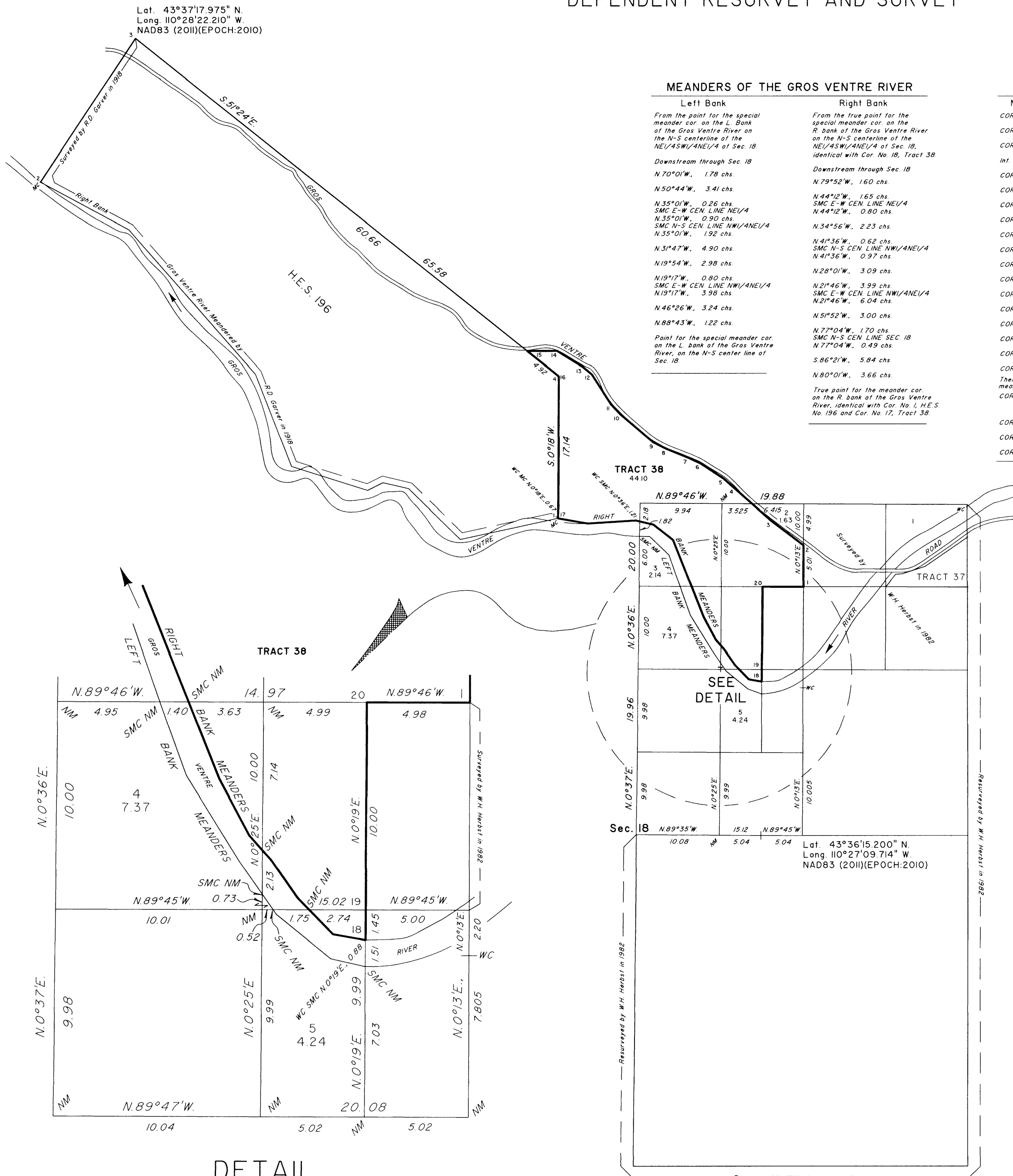
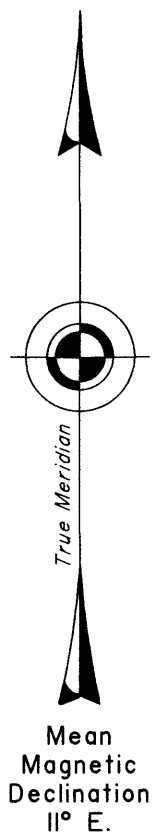
UNITED STATES DEPARTMENT OF THE INTERIOR  
BUREAU OF LAND MANAGEMENT

Cheyenne, Wyoming July 2, 2018

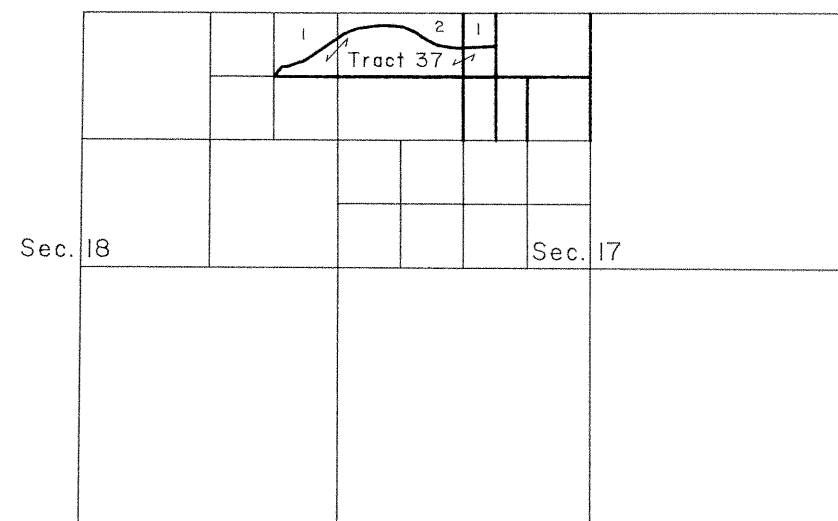
This plat is strictly conformable to the approved field notes, and the survey, having been correctly executed in accordance with the requirements of law and the regulations of this Bureau, is hereby accepted.

For the Director

Sonja S. Sparks  
Chief Cadastral Surveyor for Wyoming



TOWNSHIP 42 NORTH, RANGE 113 WEST, OF THE SIXTH PRINCIPAL MERIDIAN, WYOMING.  
DEPENDENT RESURVEY AND SURVEY



Metes and Bounds TRACT 37

COR. 1	S.71°33.5'W., 0.748	COR. 11	S.81°16.5'W., 3.323
COR. 2	S.82°07.3'W., 4.26	COR. 12	S.68°33'W., 2.167
Sec. 17, N-S Cen. Line NW1/4	S.82°07.3'W., 0.72	COR. 13	S.55°37.5'W., 1.312
COR. 3	N.86°33.1'W., 0.987	Secs. 17 & 18	
COR. 4	N.79°26.4'W., 2.352	COR. 14	S.55°37.5'W., 6.204
COR. 5	N.75°17.7'W., 0.272	COR. 15	S.71°37.2'W., 2.919
COR. 6	N.61°16.4'W., 2.604	COR. 16	S.85°39.6'W., 0.852
COR. 7	N.50°12.7'W., 0.969	COR. 17	S.39°08.5'W., 1.918
COR. 8	N.66°36.8'W., 2.374	COR. 18	S.89°46'E., 9.97
COR. 9	N.85°01.5'W., 2.141	COR. 19	S.89°54'E., 19.73
COR. 10	N.89°54.5'W., 1.74	COR. 20	S.89°54'E., 4.93
COR. 11		COR. 1	N.0°05'W., 5.45

A history of surveys is contained in the field notes.

This plat represents the dependent resurvey of a portion of the subdivision of section 17, designed to restore the corners in their true original locations according to the best available evidence, and the survey of the subdivision of section 17, and the metes and bounds survey of Tract 37, T. 42 N., R. 113 W., Sixth Principal Meridian, Wyoming.

Except as indicated hereon, the lottings and areas are as shown on the plat approved February 14, 1908.

Survey executed by Jerry L. Messick, Supervisory Cadastral Surveyor, beginning October 6, 1992, and completed October 22, 1992, pursuant to Special Instructions dated October 6, 1992, for Group No. 573, Wyoming.

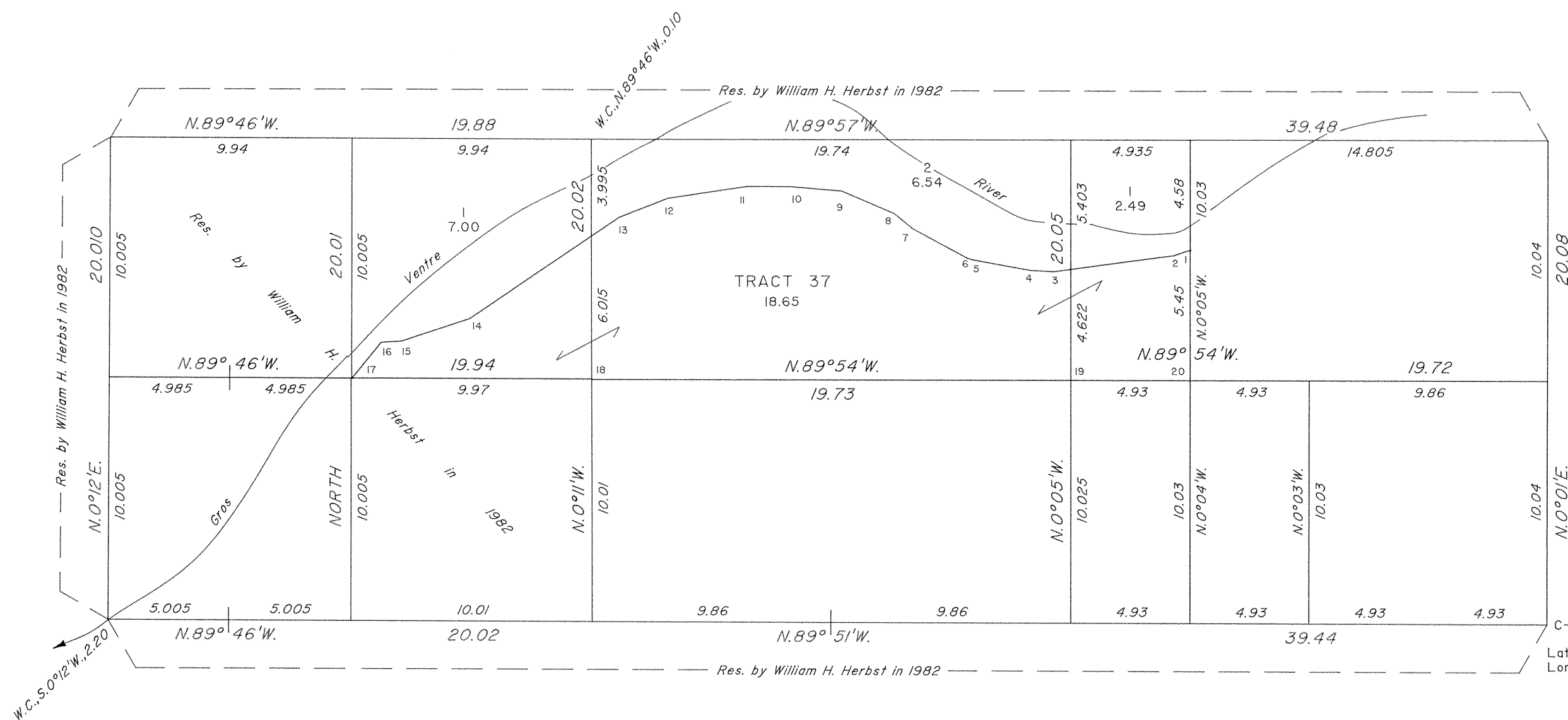
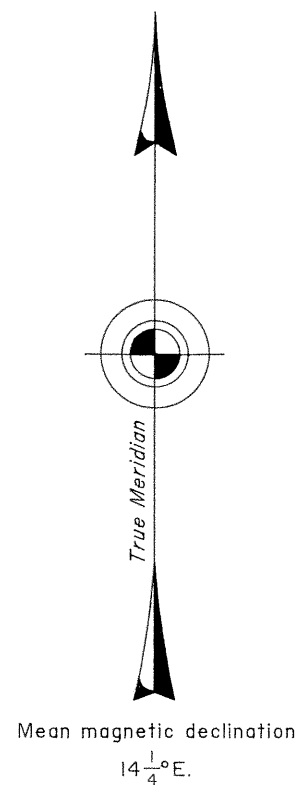
UNITED STATES DEPARTMENT OF THE INTERIOR  
BUREAU OF LAND MANAGEMENT

Cheyenne, Wyoming July 29, 1993

This plat is strictly conformable to the approved field notes, and the survey, having been correctly executed in accordance with the requirements of law and the regulations of this Bureau, is hereby accepted.

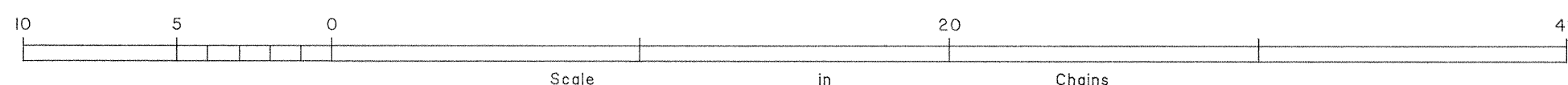
For the Director

*John P. Lee*  
Chief Cadastral Surveyor for Wyoming



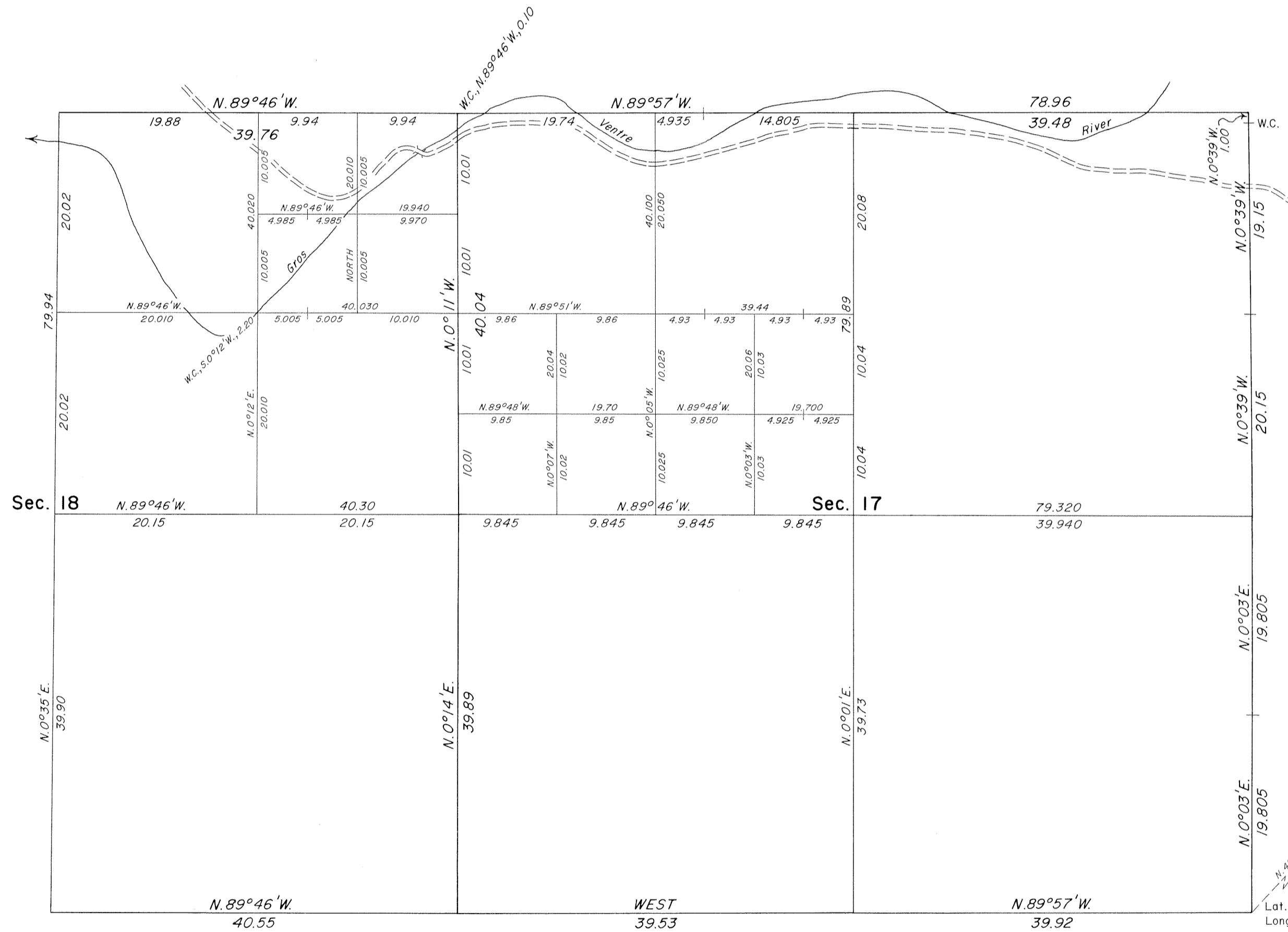
Sec. 18

Sec. 17



# TOWNSHIP 42 NORTH, RANGE 113 WEST, OF THE SIXTH PRINCIPAL MERIDIAN, WYOMING.

## DEPENDENT RESURVEY AND SUBDIVISION OF SECTIONS 17 AND 18



A history of surveys is contained in the field notes.

This plat represents the dependent resurvey of a portion of the subdivisional lines designed to restore the corners in their true original locations according to the best available evidence, and the subdivision of sections 17 and 18, T. 42 N., R. 113 W., Sixth Principal Meridian, Wyoming.

The areas are as shown on the plat approved February 14, 1908.

Survey executed by William H. Herbst, Supervisory Cadastral Surveyor, beginning August 3, 1982, and completed August 16, 1982, pursuant to Special Instructions dated June 25, 1982, for Group No. 437, Wyoming.

UNITED STATES DEPARTMENT OF THE INTERIOR  
BUREAU OF LAND MANAGEMENT

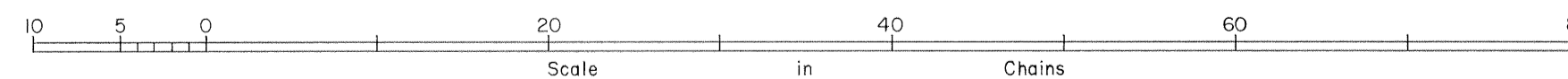
Cheyenne, Wyoming July 17, 1984

This plat is strictly conformable to the approved field notes, and the survey, having been correctly executed in accordance with the requirements of law and the regulations of this Bureau, is hereby accepted.

For the Director

*Richard S. Parker*

Chief Cadastral Surveyor for Wyoming

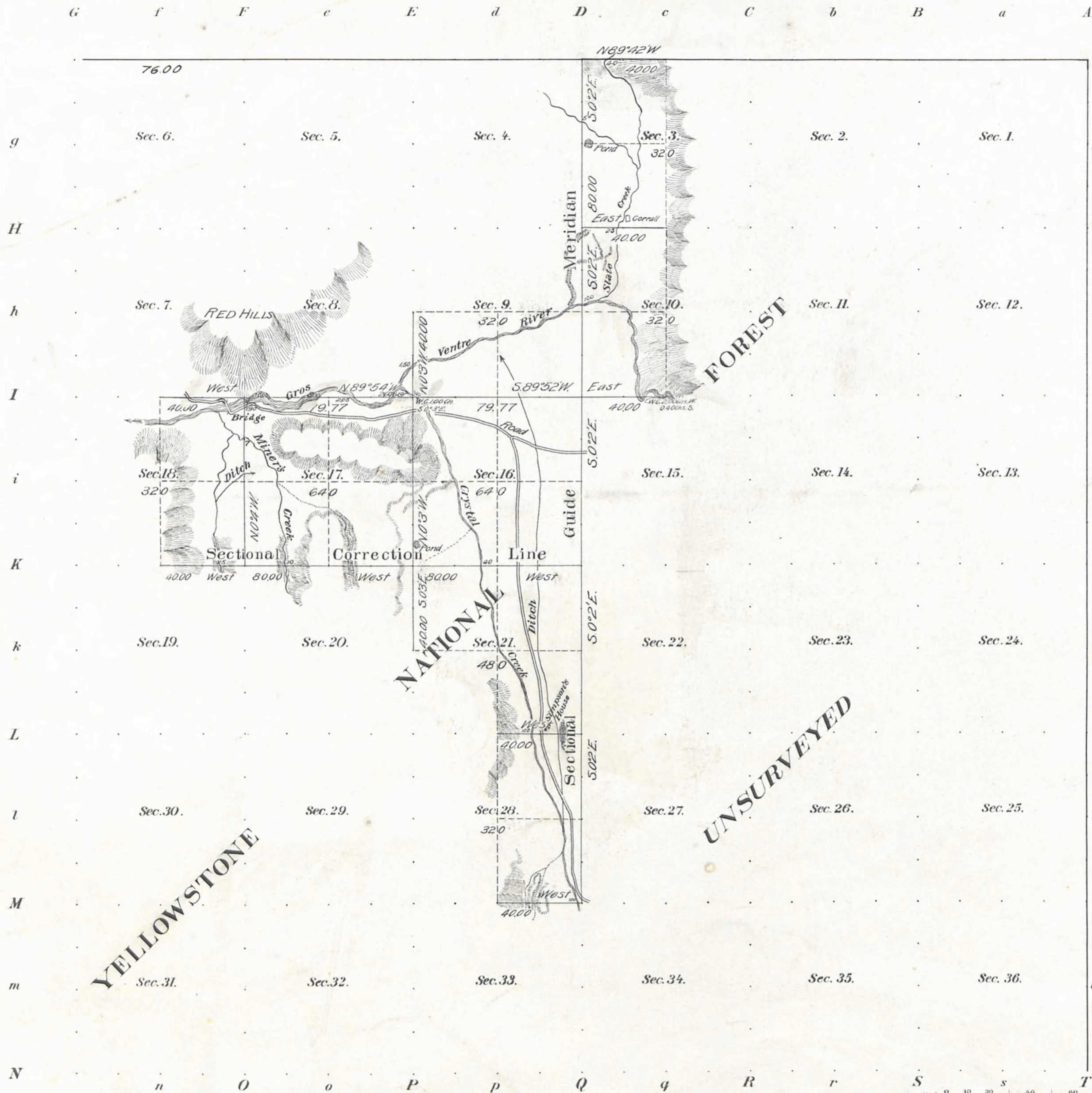


*1984*

4868

(4-675a)

Fractional Township No 42 North, Range No 113 West of the Sixth Principal Meridian, Wyoming.



Meanders of

Posts	Courses	Ch <sup>2</sup> Lk <sup>2</sup>	Posts	Courses	Ch <sup>2</sup> Lk <sup>2</sup>	Posts	Courses	Ch <sup>2</sup> Lk <sup>2</sup>

Total number of Acres 5360.00

Surveys Designated	By Whom Surveyed	Date of Contract No	Amount of Surveys M. Ch <sup>2</sup> Ll. <sup>2</sup>	When Surveyed
N. Township line	Wm O. Owen	250. Sept. 2, 1892.	5 76 00	Oct. 6-18, 1892.
Subdivisions	Adrian J. Fairshall	324. Apr. 2, 1907.	14 79 54	July 20-29, 1907.
E. Township line	Carpenter & Warner	245. Jan. 23, 1892.	6 00 00	July 9-10, 1892.

Fractional  
 The above Map of Township No 42 North of Range No 113 West of the Sixth Principal Meridian, Wyoming is strictly conformable to the field notes of the survey thereof on file in this Office, which have been examined and approved.  
 Surveyor General's Office.  
 Cheyenne, Wyoming, February 14, 1908.

*Alphonso Peterson*  
 Sur. Gen.

Accepted by the Hon. Commissioner in his letter E. October 6, 1908. Duplicate plat forwarded to Evansston Land Office, October 26, 1908.

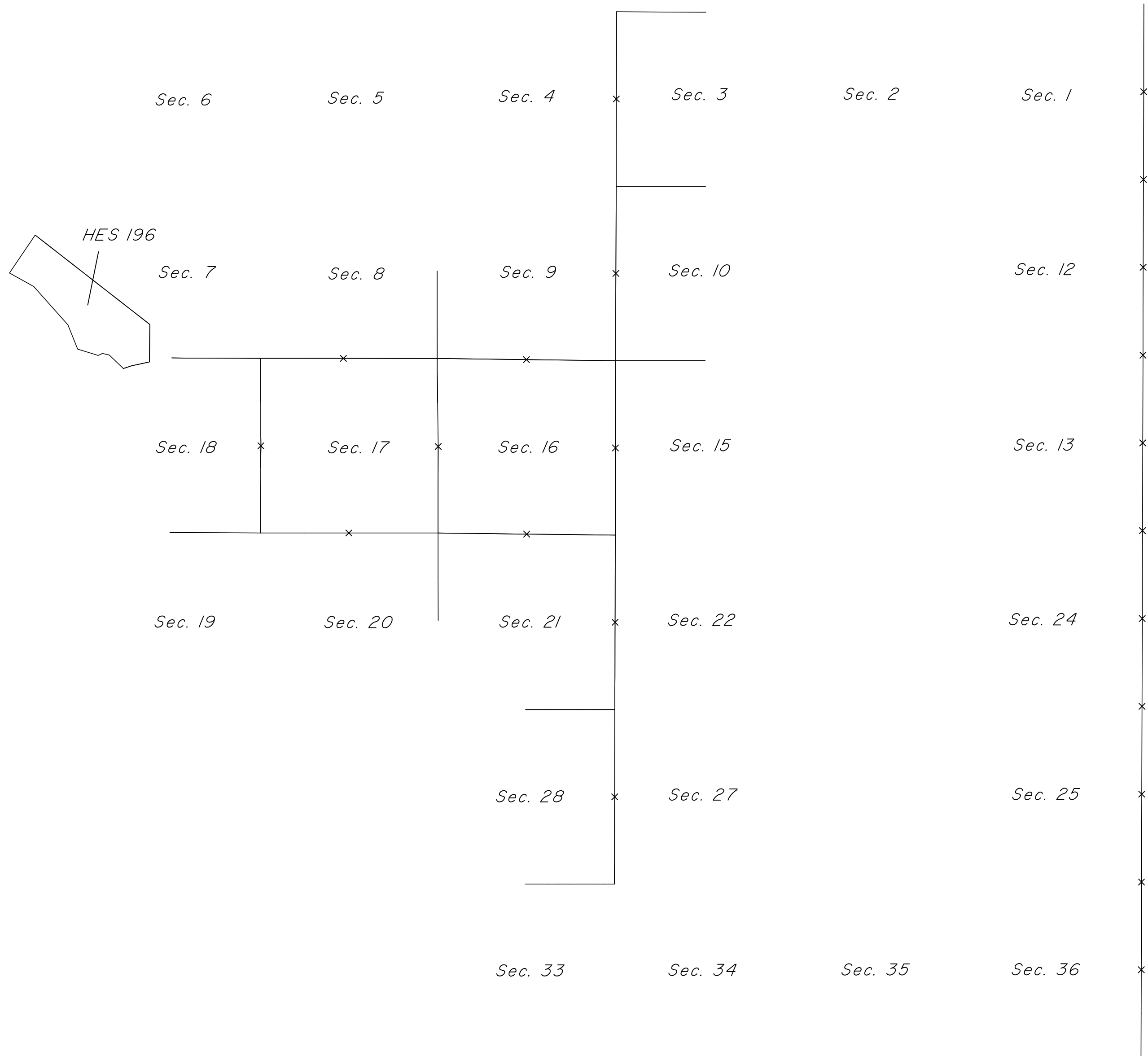
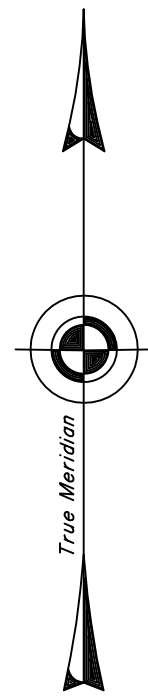
42-113

2914

G. & H.  
 THE DUPRE PETER & CO., WASHINGTON, D. C.

TOWNSHIP 42 NORTH, RANGE 113 WEST OF THE SIXTH PRINCIPAL MERIDIAN, WYOMING.

INDEX TO CORNER REMONUMENTATION WITHOUT SURVEY



NOT TO SCALE

LEGEND

Remonumented Corner as Indicated

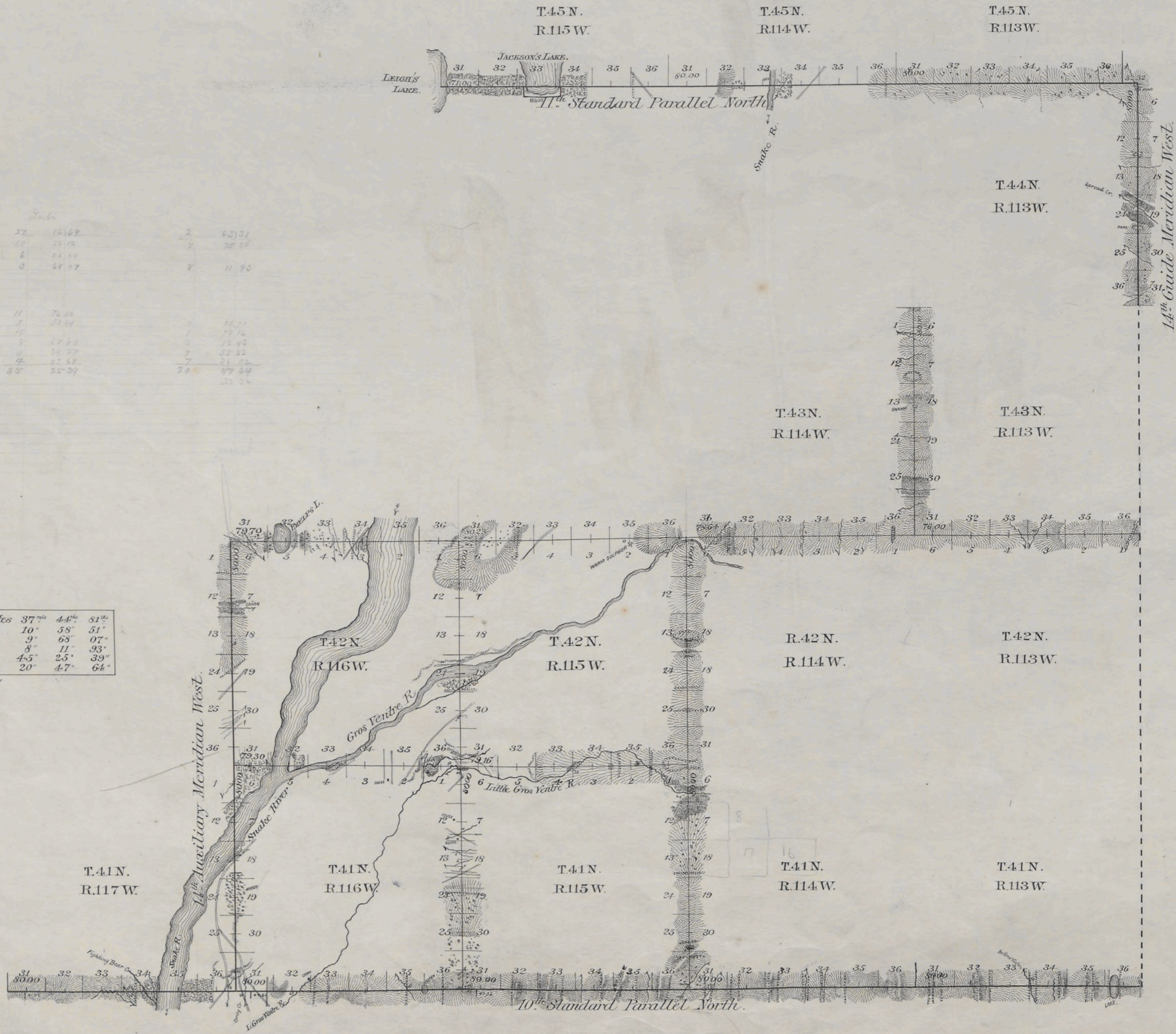
*Index*

1535

*Registered file No. 23-93*

# EXTERIOR LINES.

Scale 2 miles to 1 inch. Magnetic Variation East.



*Sub*

37	6169	2	6213
38	5812	2	5856
39	5455	2	5499
40	5098	2	5142
41	4741	2	4785
42	4384	2	4428
43	4027	2	4071
44	3670	2	3714
45	3313	2	3357
46	2956	2	3000
47	2599	2	2643
48	2242	2	2286
49	1885	2	1929
50	1528	2	1572
51	1171	2	1215
52	814	2	858
53	457	2	501
54	100	2	144
55	36	2	80

Standard lines at intermediate rates	37 <sup>m</sup>	44 <sup>m</sup>	51 <sup>m</sup>
"    "    "    "    "    "    "    "    "	10"	58"	51"
Meridian . . . intermediate . . .	9"	63"	07"
"    "    "    "    "    "    "    "    "	8"	11"	33"
Township . . . intermediate . . .	4.5"	2.5"	39"
"    "    "    "    "    "    "    "    "	20"	4.7"	64"

Surveys Designated	By Whom Surveyed	Date of Contract	Amount of Surveys Mls. Cts.	When Surveyed	Magnetic Declination
10 <sup>th</sup> Stand. Par. N	Wm O. Owen	Sept 2, 1892	30 00 00	Sept 20 28, 1892	18° 28' East
11 <sup>th</sup> Stand. Par. N			18 23 32	Oct 22 24	18° 15' 18' 24"
14 <sup>th</sup> Guide Mer. W			6 00 00	Oct 20 21	18° 12' 18' 30"
14 <sup>th</sup> Auxil.			12 00 00	Oct 2 4	18° 12' "
Township Lines			65 73 03	Oct 6 18	18° 12' 18' 55"

I hereby certify that the above diagram of the Exterior lines of Townships 41 and 42 North, Ranges 115 and 116 West, Townships 43 North, Ranges 113 and 114 West, the 10<sup>th</sup> and 11<sup>th</sup> Standard Parallels North, the 14<sup>th</sup> Guide and the 14<sup>th</sup> Auxiliary Meridian, west of the 6<sup>th</sup> Principal Meridian, Wyoming, is strictly conformable to the field notes of survey thereon on file in this office, which have been examined and approved.

Surveyor General's Office,  
Cheyenne, Wyo. June 30 - 1893

*A. Richards*  
U.S. Surveyor General.

## T. 42 N., R. 113 W., Sixth Principal Meridian, Wyoming, Homestead Entry Survey Links

Plat Accession Number(s)	Year(s) of Survey	Homestead Entry Survey No. 196 (Sections 7 and 8)
5336	1917	<a href="https://www.wy.blm.gov/cadastral/homesteads/150-199/hes196.pdf">https://www.wy.blm.gov/cadastral/homesteads/150-199/hes196.pdf</a>