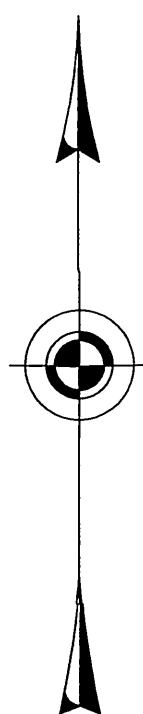


T. 42 N., R. 116 W., Sixth Principal Meridian, Wyoming, Field Note Links

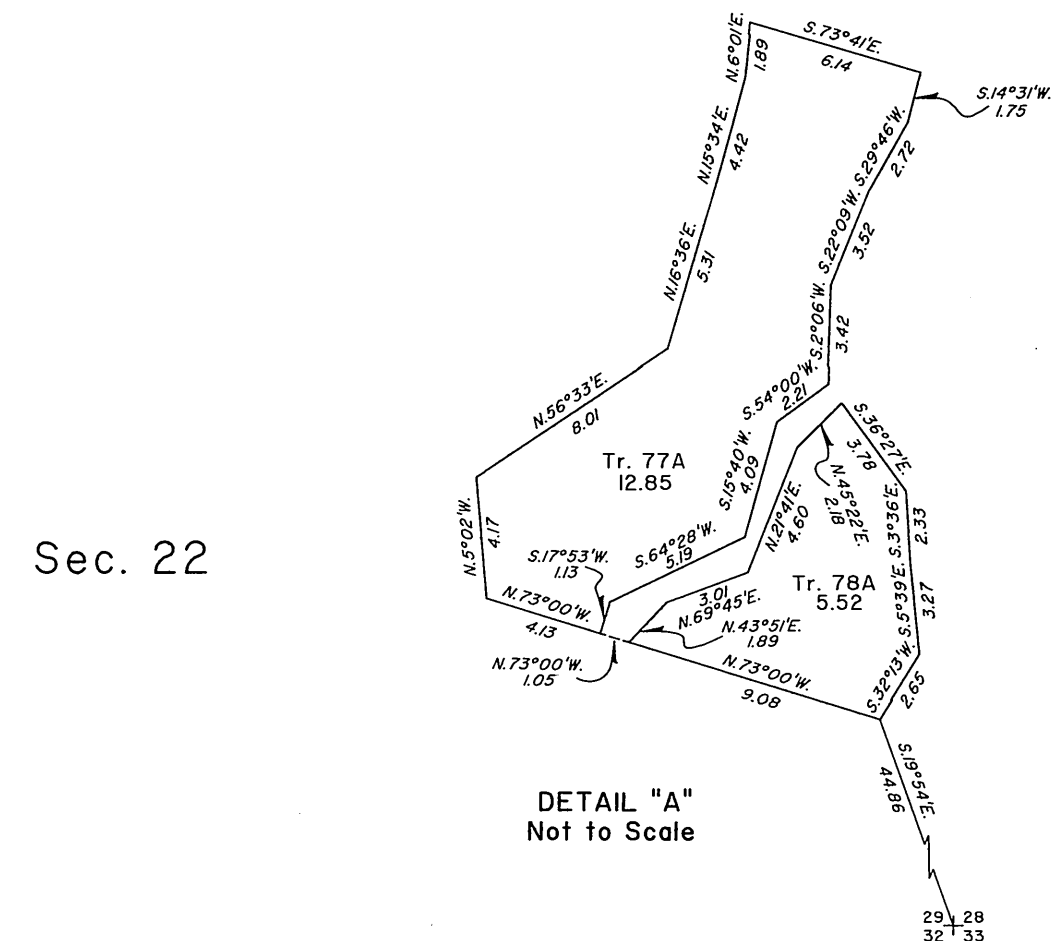
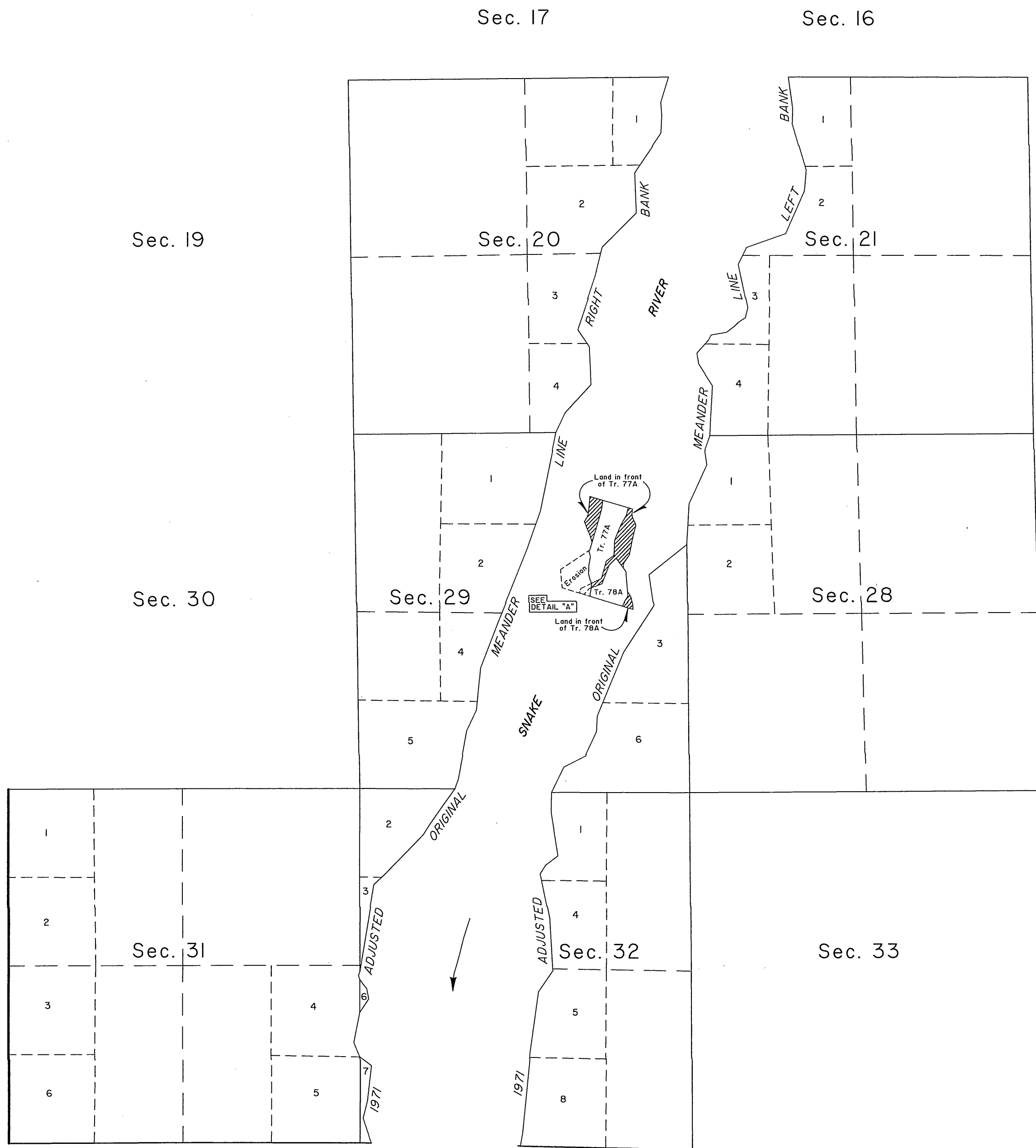
Plat Accession Number(s)	Year(s) of Survey	
		Township Subdivision Plats
8470	2006	See plat for field notes
8194	1995-97	https://www.wy.blm.gov/cadastral/countyplats/teton/fieldnotes/t42nr116w_gp607fn.pdf
8134	1995	https://www.wy.blm.gov/cadastral/countyplats/teton/fieldnotes/t42nr116w_gp603fn.pdf
7870	1988	https://www.wy.blm.gov/cadastral/countyplats/teton/fieldnotes/t42nr116w_gp514fn.pdf
		Group 275 metes and bounds descriptions of tracts
7812; 7813	1987	https://www.wy.blm.gov/cadastral/countyplats/teton/fieldnotes/t42nr116w_mb.pdf
7359	1976	https://www.wy.blm.gov/cadastral/countyplats/teton/fieldnotes/t42nr116w_gp301-2fn_s34.pdf
7237; 7238	1971	https://www.wy.blm.gov/cadastral/countyplats/teton/fieldnotes/t42nr116w_gp275fn.pdf
7128	1966-69	https://www.wy.blm.gov/cadastral/countyplats/teton/fieldnotes/t42nr116w_gp301-2fn.pdf
4534	1893	https://www.wy.blm.gov/cadastral/countyplats/teton/fieldnotes/t42nr116w_c250fn.pdf
		Township Exterior Plats
4535	1892	https://www.wy.blm.gov/cadastral/countyplats/teton/fieldnotes/ext2632.pdf

TOWNSHIP 42 NORTH, RANGE 116 WEST, OF THE SIXTH PRINCIPAL MERIDIAN, WYOMING.

SUPPLEMENTAL PLAT



FOURTEENTH AUXILIARY MERIDIAN WEST



Boundaries of the above tracts were determined by existing record information, no field work was conducted.

The southerly boundaries of Tracts 77A and 78A are per Amended Judgement Re: United States of America and Hansen, ET AL, recorded in Book 200 of Photo, pages 101-107, Teton County Clerk's Office in Jackson, WY. The northerly boundary of Tract 77A is per Boundary Line Agreement, recorded in Book 670, pages 416-422, Teton County Clerk's Office in Jackson, WY. The remaining courses were derived from the metes and bounds descriptions (located in the group file for Group No. 275, WY) of former Tracts 77 and 78, shown on Plat of Survey of Riparian Lands accepted August 21, 1987.

The lands shown hereon in front of Tracts 77A and 78A are unsurveyed accretions and relictions attached to the tracts. The portrayal of these lands along with the area labeled "Erosion" were determined by photomapping from 2012 aerial photography.

Reference should be made to Sheet No. 1 for further information.

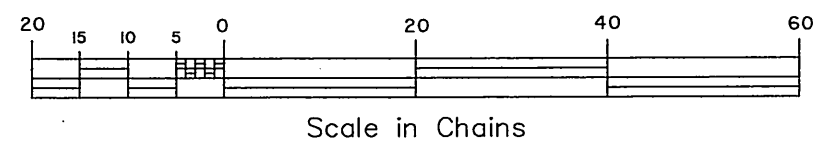
UNITED STATES DEPARTMENT OF THE INTERIOR
BUREAU OF LAND MANAGEMENT

Cheyenne, Wyoming August 28, 2014

This plat, showing amended federal ownership, is based upon the official records and, having been correctly prepared in accordance with the regulations of this Bureau, is hereby accepted.

For the Director
John P. Lee

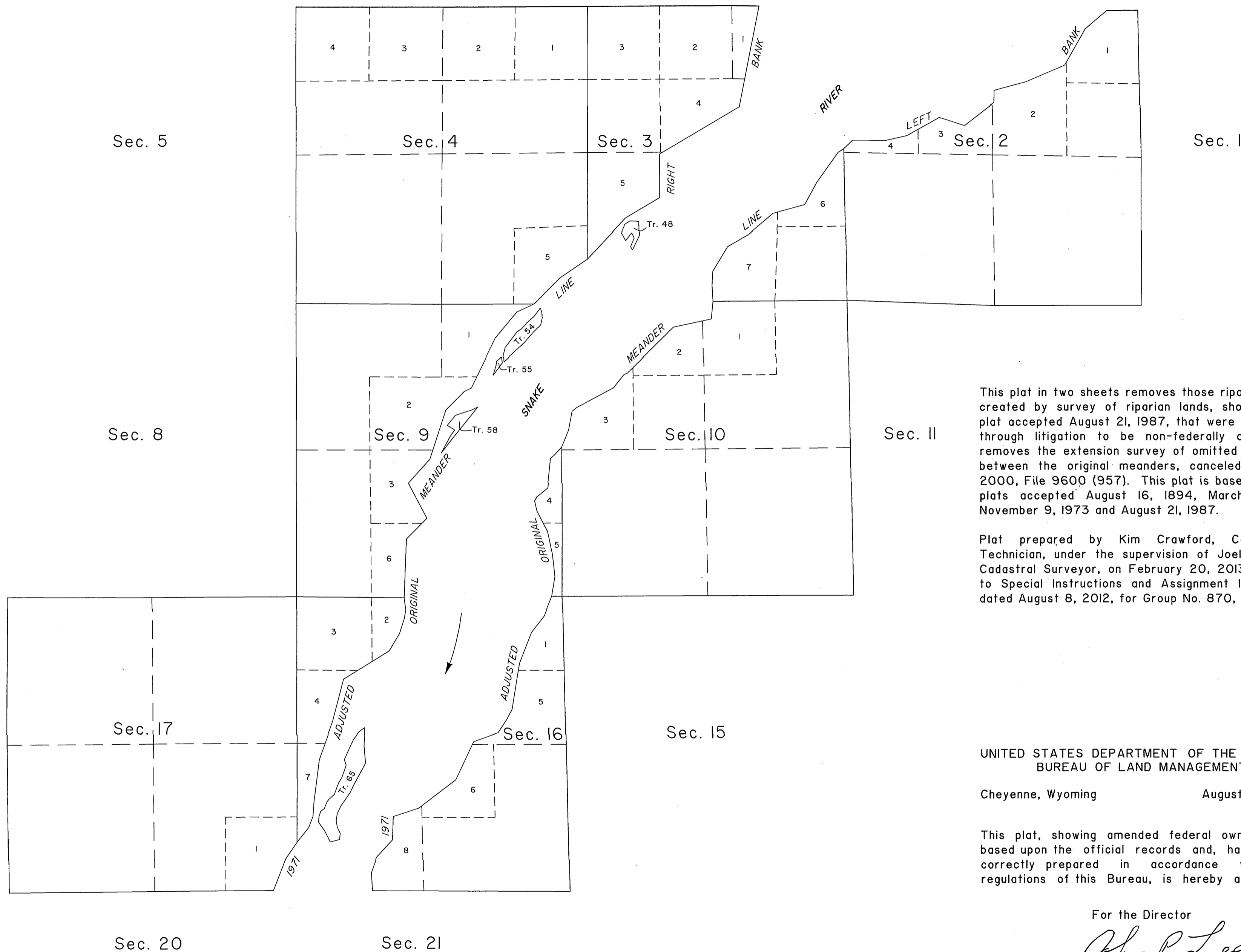
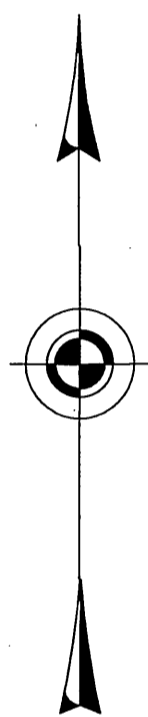
John P. Lee
Chief Cadastral Surveyor for Wyoming



JTE

TOWNSHIP 42 NORTH, RANGE 116 WEST, OF THE SIXTH PRINCIPAL MERIDIAN, WYOMING.

SUPPLEMENTAL PLAT



This plat in two sheets removes those riparian tracts created by survey of riparian lands, shown on the plat accepted August 21, 1987, that were determined through litigation to be non-federally owned, and removes the extension survey of omitted lands lying between the original meanders, canceled March 2, 2000, File 9600 (957). This plat is based upon the plats accepted August 16, 1894, March 17, 1971, November 9, 1973 and August 21, 1987.

Plat prepared by Kim Crawford, Cartographic Technician, under the supervision of Joel T. Ebner, Cadastral Surveyor, on February 20, 2013, pursuant to Special Instructions and Assignment Instructions dated August 8, 2012, for Group No. 870, Wyoming.

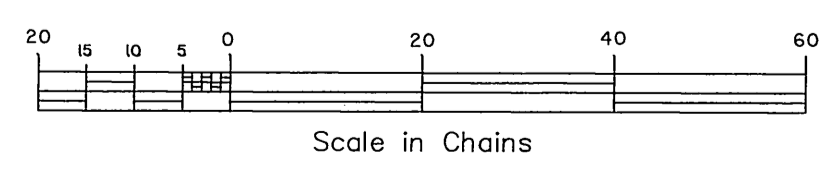
UNITED STATES DEPARTMENT OF THE INTERIOR
BUREAU OF LAND MANAGEMENT

Cheyenne, Wyoming August 28, 2014

This plat, showing amended federal ownership, is based upon the official records and, having been correctly prepared in accordance with the regulations of this Bureau, is hereby accepted.

For the Director

John P. Lee
Chief Cadastral Surveyor for Wyoming



JYE

TOWNSHIP 42 NORTH, RANGE 116 WEST, OF THE SIXTH PRINCIPAL MERIDIAN, WYOMING.

CORNER PERPETUATION

SURVEY INFORMATION AND CERTIFICATE

The meander cor. of secs. 33 and 34, on the left bank of the Gros Ventre River, monumented with a 60d nail set flush with the surface of a gravel road, as described in the 1995-97 field notes of the dependent resurvey of a portion of the subdivisional lines and the adjusted original meanders of the left bank of the Gros Ventre River, T. 42 N., R. 116 W.

from which new reference monuments

A stainless steel post, 28 ins. long, 2 1/2 ins. diam., firmly set flush with the surface of the ground, for a reference monument, bears S. 57° 07' E., 0.63 chs. dist., with brass cap mkd. RM T42N R116W S34 41.6 FT. 2006, and an arrow pointing to the cor. Set a steel fence post alongside the stainless steel post.

A stainless steel post, 28 ins. long, 2 1/2 ins. diam., firmly set 26 ins. in the ground, for a reference monument, bears S. 44° 59' W., 1.27 chs. dist., with brass cap mkd. RM T42N R116W S33 83.9 FT. 2006, and an arrow pointing to the cor. Cor. is located at a corner of fences extending S. and W.

This plat represents the entire record of the establishment of reference monuments for the meander corner of sections 33 and 34, on the left bank of the Gros Ventre River, Township 42 North, Range 116 West, Sixth Principal Meridian, Wyoming.

At the notification of the Wyoming Department of Transportation, an examination was made of the existing meander corner, reestablished during the dependent resurvey, and associated reference monuments. It was found that one reference monument was displaced and the other destroyed. New reference monuments were established to perpetuate the position of the meander corner which was at risk of being displaced or destroyed during the course of ongoing road maintenance and improvements.

Thomas E. Casinger executed the dependent resurvey, corrective dependent resurvey, the adjusted original meanders of the left bank of the Gros Ventre River, and the subdivision of section 34, under this same group, in 1995-97. Reference should be made to the plat approved December 22, 1997, for survey information.

I, Sonja S. Sparks, Cadastral Surveyor, HEREBY CERTIFY upon honor, that in pursuance of Supplemental Special Instructions No. 2, dated September 18, 2006, and Assignment Instructions dated September 18, 2006, for Group Number 607, Wyoming, I have perpetuated the meander corner of sections 33 and 34, on the left bank of the Gros Ventre River, Township 42 North, Range 116 West, Sixth Principal Meridian, Wyoming, and that this plat in one sheet represents the entire record of this perpetuation. Field work commenced September 20, 2006, and completed September 21, 2006, and has been made in strict conformity with the special instructions, the Manual of Instructions for the Survey of the Public Lands of the United States, 1973, and in specific manner described hereon.

Sonja S. Sparks
Sonja S. Sparks
Cadastral Surveyor

January 30, 2008
Date

UNITED STATES DEPARTMENT OF THE INTERIOR
BUREAU OF LAND MANAGEMENT

Cheyenne, Wyoming January 30, 2008

This plat representing the entire record of this perpetuation, having been correctly executed in accordance with the requirements of law and the regulations of this Bureau, is hereby accepted.

For the Director

John P. Lee
John P. Lee

Chief Cadastral Surveyor for Wyoming



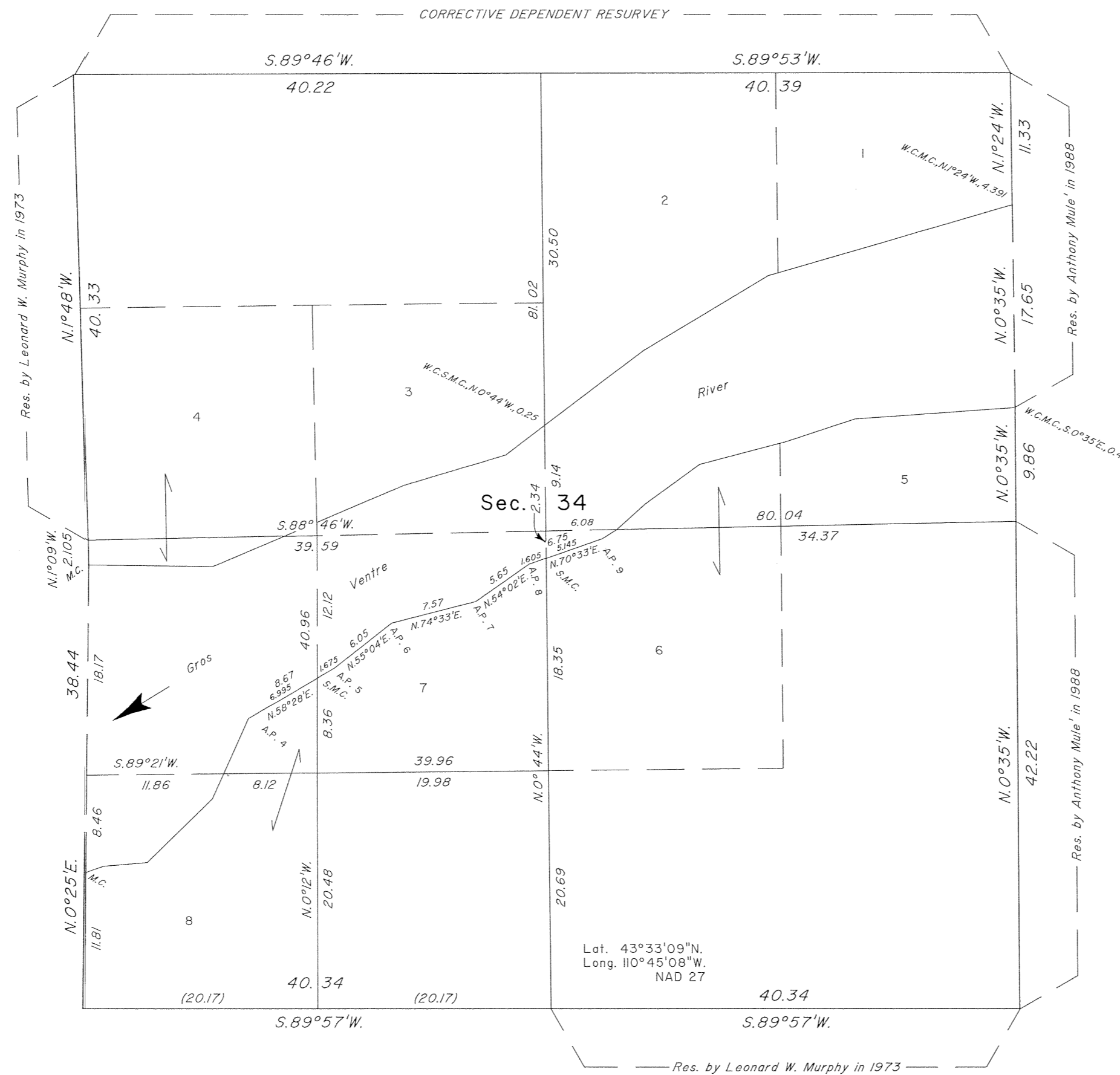
TOWNSHIP 42 NORTH, RANGE 116 WEST, OF THE SIXTH PRINCIPAL MERIDIAN, WYOMING.

DEPENDENT RESURVEY, CORRECTIVE DEPENDENT RESURVEY AND SUBDIVISION OF SECTION 34

Sec. 27

Sec. 33

Sec. 35



A history of surveys is contained in the field notes.

This plat represents the dependent resurvey of portions of the south boundary, subdivisional lines, adjusted original meanders of the left bank of the Gros Ventre River, and the corrective dependent resurvey of a portion of the subdivisional lines, designed to restore the corners in their true original locations according to the best available evidence, and the subdivision of section 34, T. 42 N., R. 116 W., Sixth Principal Meridian, Wyoming.

The lottings and areas are as shown on the duplicate and triplicate plats approved August 16, 1894. The configuration of original lots 7 and 8, section 34, on the original plat was in error, and is hereby corrected.

Survey executed by Thomas E. Casinger, Cadastral Surveyor, beginning September 5, 1995, and completed October 16, 1997, pursuant to Special Instructions dated July 7, 1995, and Supplemental Special Instructions dated September 8, 1995, for Group No. 607, Wyoming.

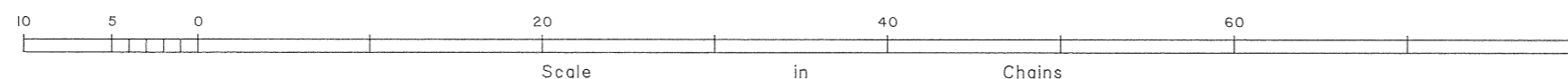
UNITED STATES DEPARTMENT OF THE INTERIOR
BUREAU OF LAND MANAGEMENT

Cheyenne, Wyoming December 22, 1997

This plat is strictly conformable to the approved field notes, and the survey, having been correctly executed in accordance with the requirements of law and the regulations of this Bureau, is hereby accepted.

For the Director

John P. Lee
Chief Cadastral Surveyor for Wyoming



JPM

TOWNSHIP 42 NORTH, RANGE 116 WEST, OF THE SIXTH PRINCIPAL MERIDIAN, WYOMING.
CORRECTIVE DEPENDENT RESURVEY

Sec. 14

Sec. 22

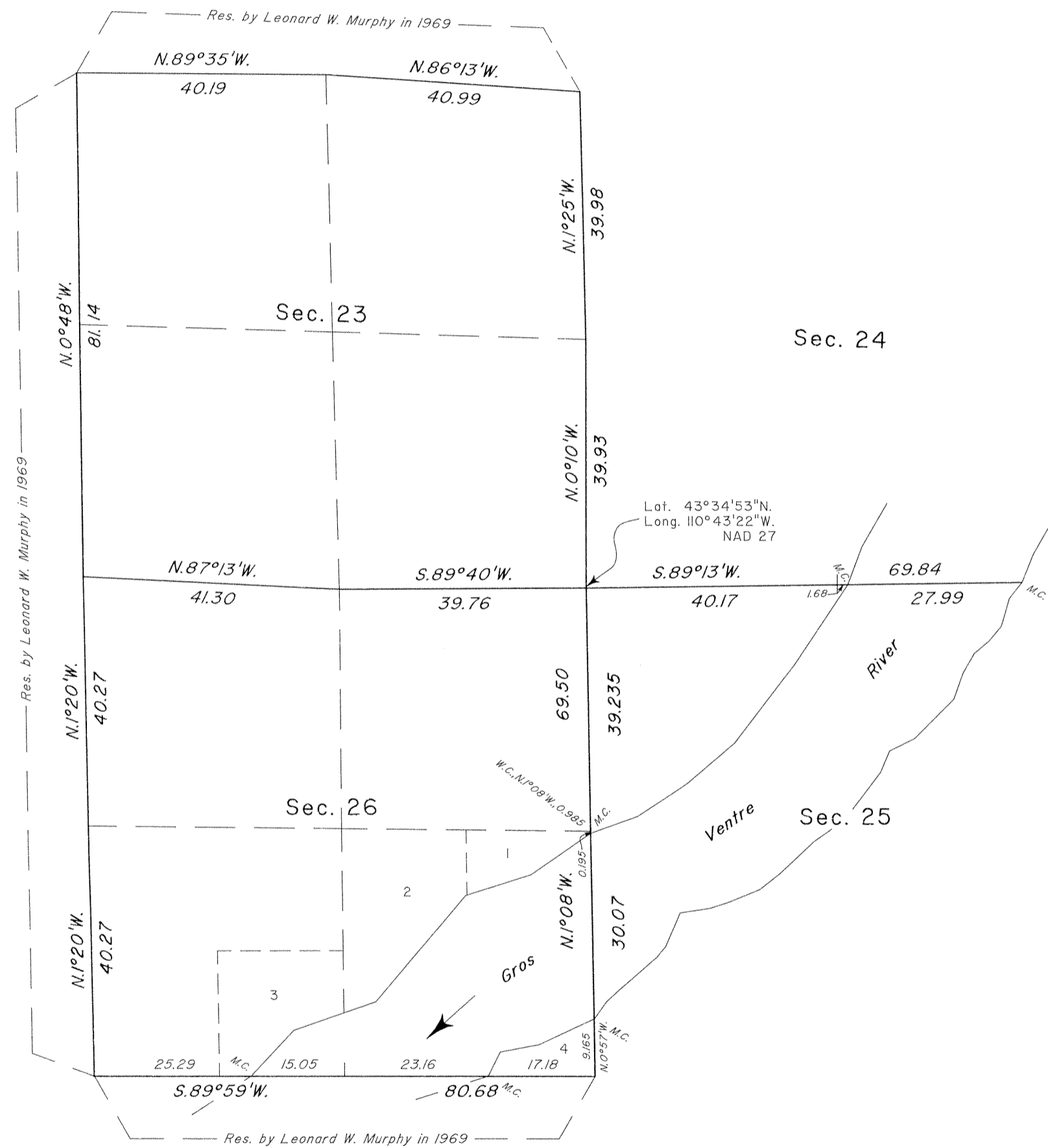
Sec. 24

Sec. 27

Sec. 26

Sec. 25

Sec. 35



A history of surveys is contained in the field notes.

This plat represents the corrective dependent resurvey of a portion of the subdivisional lines designed to restore the corners to their true original locations according to the best available evidence, T. 42 N., R. 116 W., Sixth Principal Meridian, Wyoming.

The lottings and areas are as shown on the plat approved August 16, 1894.

Survey executed by Thomas E. Casinger, Cadastral Surveyor, beginning May 15, 1995 and completed May 18, 1995, pursuant to Special Instructions dated April 25, 1995, and Supplemental Special Instructions dated May 1, 1995, for Group No. 603, Wyoming.

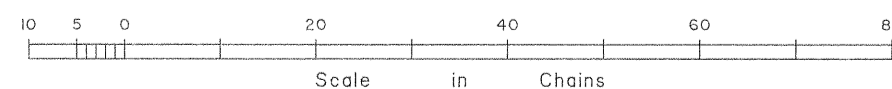
UNITED STATES DEPARTMENT OF THE INTERIOR
BUREAU OF LAND MANAGEMENT

Cheyenne, Wyoming December 26, 1996

This plat is strictly conformable to the approved field notes, and the survey, having been correctly executed in accordance with the requirements of law and the regulations of this Bureau, is hereby accepted.

For the Director

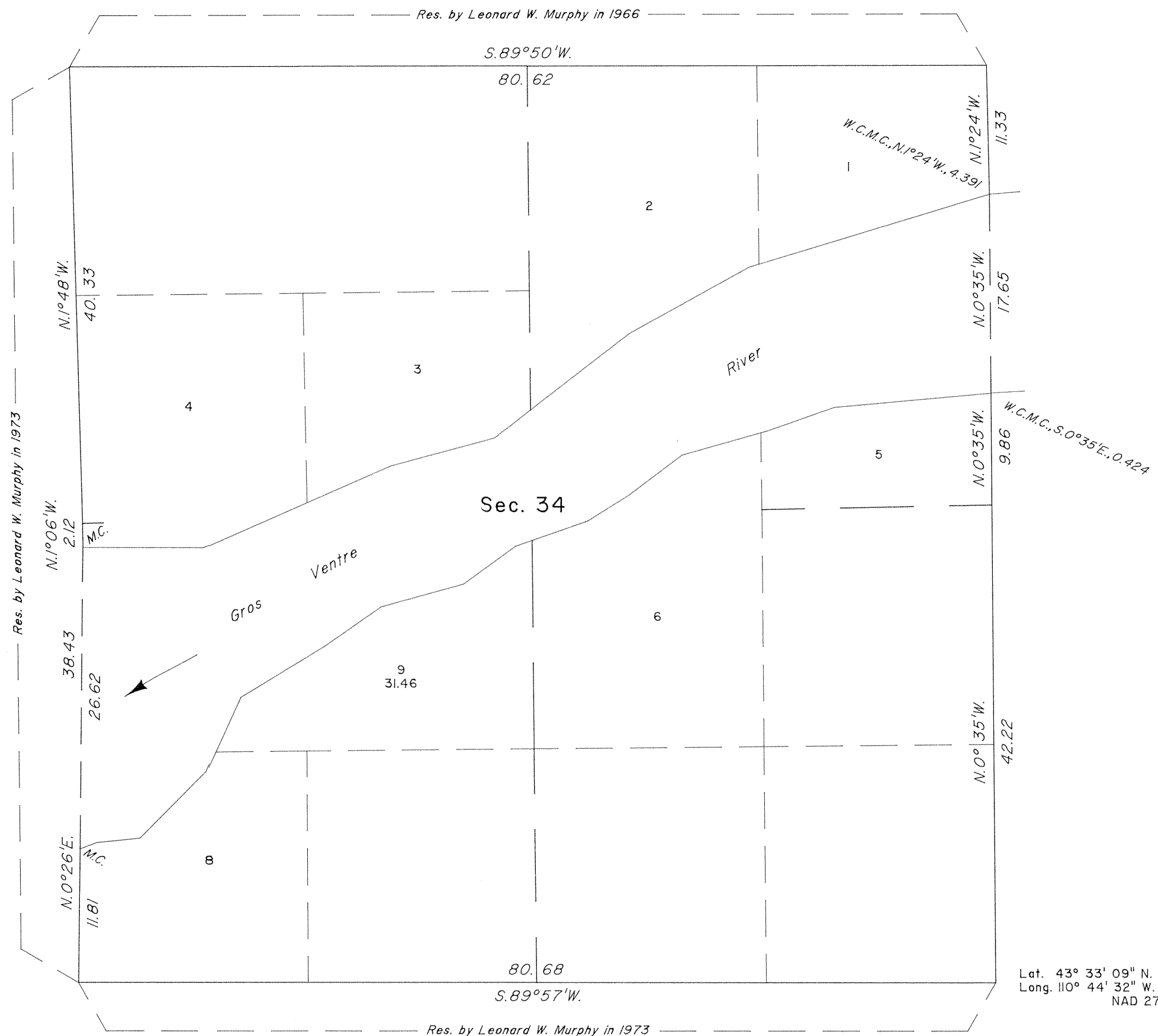
Jerry L. Menick
Acting Chief Cadastral Surveyor for Wyoming



Mean magnetic declination
14° E.

JLM

TOWNSHIP 42 NORTH, RANGE 116 WEST, OF THE SIXTH PRINCIPAL MERIDIAN, WYOMING.
CORRECTIVE DEPENDENT RESURVEY



A history of surveys is contained in the field notes.

This plat represents the corrective dependent resurvey of a portion of the subdivisional lines designed to restore the original corners in their true original locations according to the best available evidence, T. 42 N., R. 116 W., Sixth Principal Meridian, Wyoming.

Except as indicated hereon, the lottings and areas are as shown on the plat approved August 16, 1894.

Survey executed by Anthony Mule', Cadastral Surveyor, beginning August 10, 1988, and completed August 11, 1988, pursuant to Special Instructions dated July 18, 1988, for Group No. 514, Wyoming.

Lot 9, Section 34 CANCELED, refer to plat approved December 22, 1997.

UNITED STATES DEPARTMENT OF THE INTERIOR
BUREAU OF LAND MANAGEMENT

Cheyenne, Wyoming October 30, 1989

This plat is strictly conformable to the approved field notes, and the survey, having been correctly executed in accordance with the requirements of law and the regulations of this Bureau, is hereby accepted.

For the Director
John P. Lee
Chief Cadastral Surveyor for Wyoming

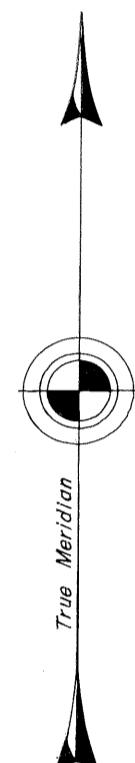


JPM

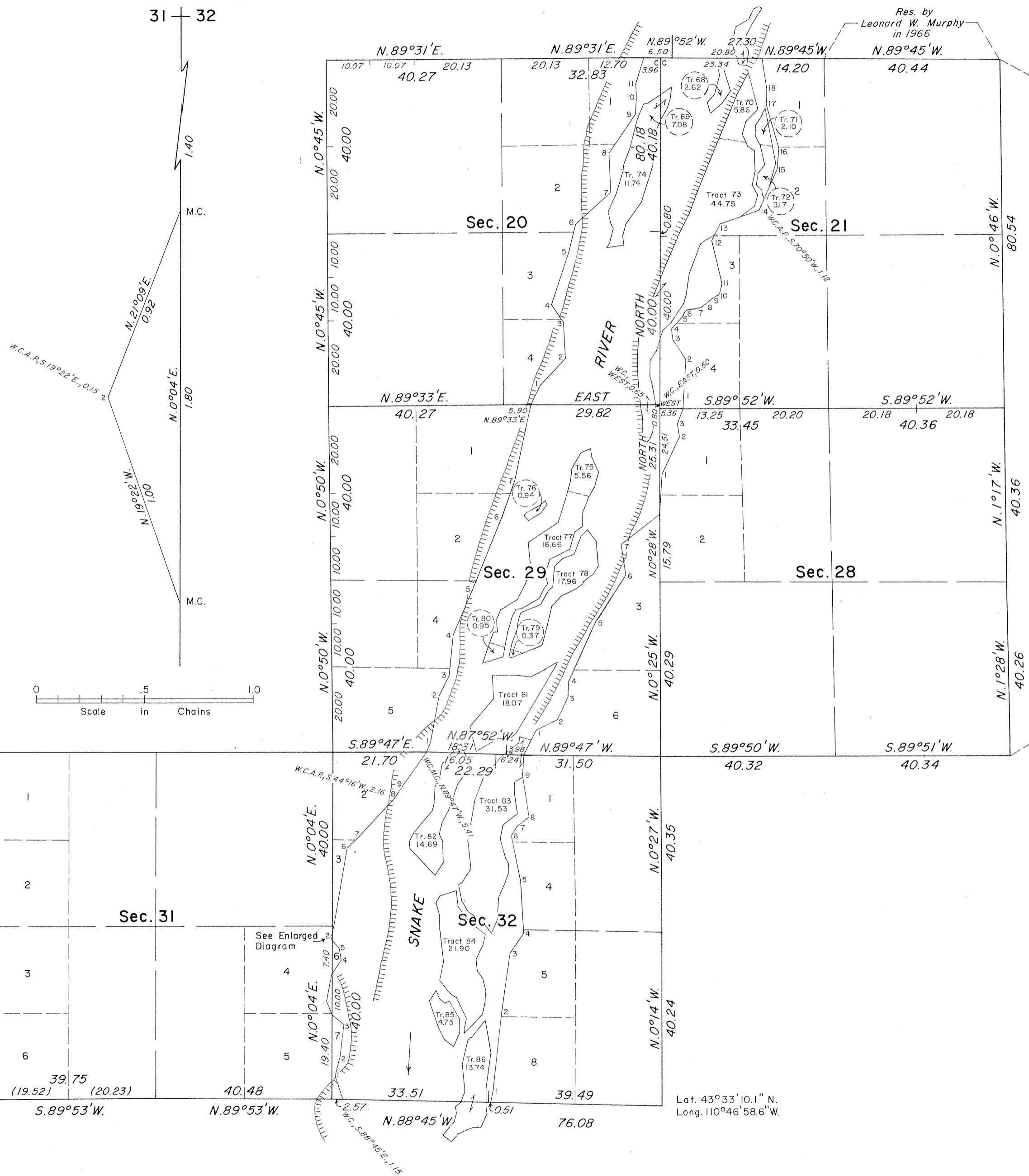
TOWNSHIP 42 NORTH, RANGE 116 WEST, OF THE SIXTH PRINCIPAL MERIDIAN, WYOMING. SURVEY OF RIPARIAN LANDS

ENLARGED DIAGRAM
1/4 Cor.

31 | 32



Mean magnetic declination
16° E.



Reference should be made to Sheet No. 1 for
survey information.

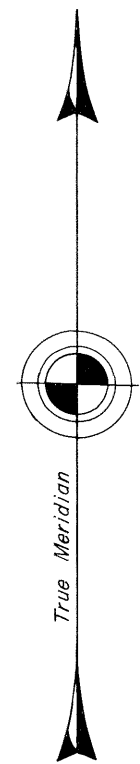
UNITED STATES DEPARTMENT OF THE INTERIOR
BUREAU OF LAND MANAGEMENT

Cheyenne, Wyoming August 21, 1987

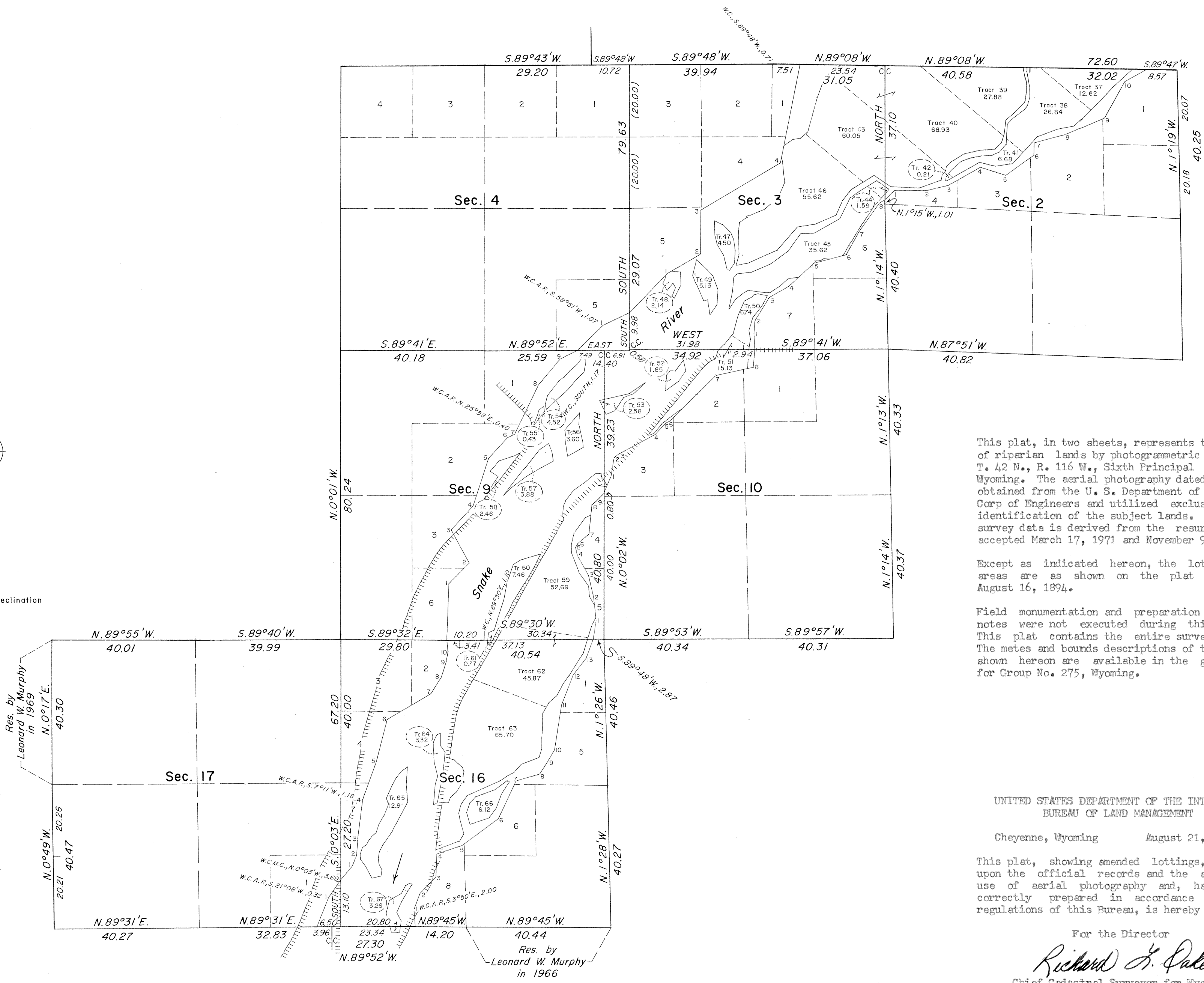
This plat, showing amended lottings, is based
upon the official records and the additional
use of aerial photography and, having been
correctly prepared in accordance with the
regulations of this Bureau, is hereby accepted.

For the Director
Richard L. Poles
Chief Cadastral Surveyor for Wyoming

TOWNSHIP 42 NORTH, RANGE 116 WEST, OF THE SIXTH PRINCIPAL MERIDIAN, WYOMING.
SURVEY OF RIPARIAN LANDS



Mean magnetic declination
16° E.



This plat, in two sheets, represents the survey of riparian lands by photogrammetric methods, T. 42 N., R. 116 W., Sixth Principal Meridian, Wyoming. The aerial photography dated 1974 was obtained from the U. S. Department of the Army, Corp of Engineers and utilized exclusively for identification of the subject lands. All other survey data is derived from the resurvey plats accepted March 17, 1971 and November 9, 1973.

Except as indicated hereon, the lottings and areas are as shown on the plat approved August 16, 1894.

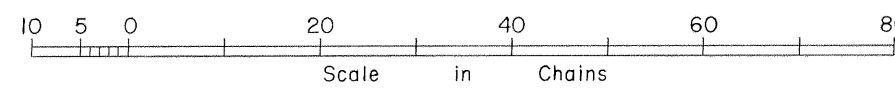
Field monumentation and preparation of field notes were not executed during this survey. This plat contains the entire survey record. The metes and bounds descriptions of the tracts shown hereon are available in the group file for Group No. 275, Wyoming.

UNITED STATES DEPARTMENT OF THE INTERIOR
BUREAU OF LAND MANAGEMENT

Cheyenne, Wyoming August 21, 1987

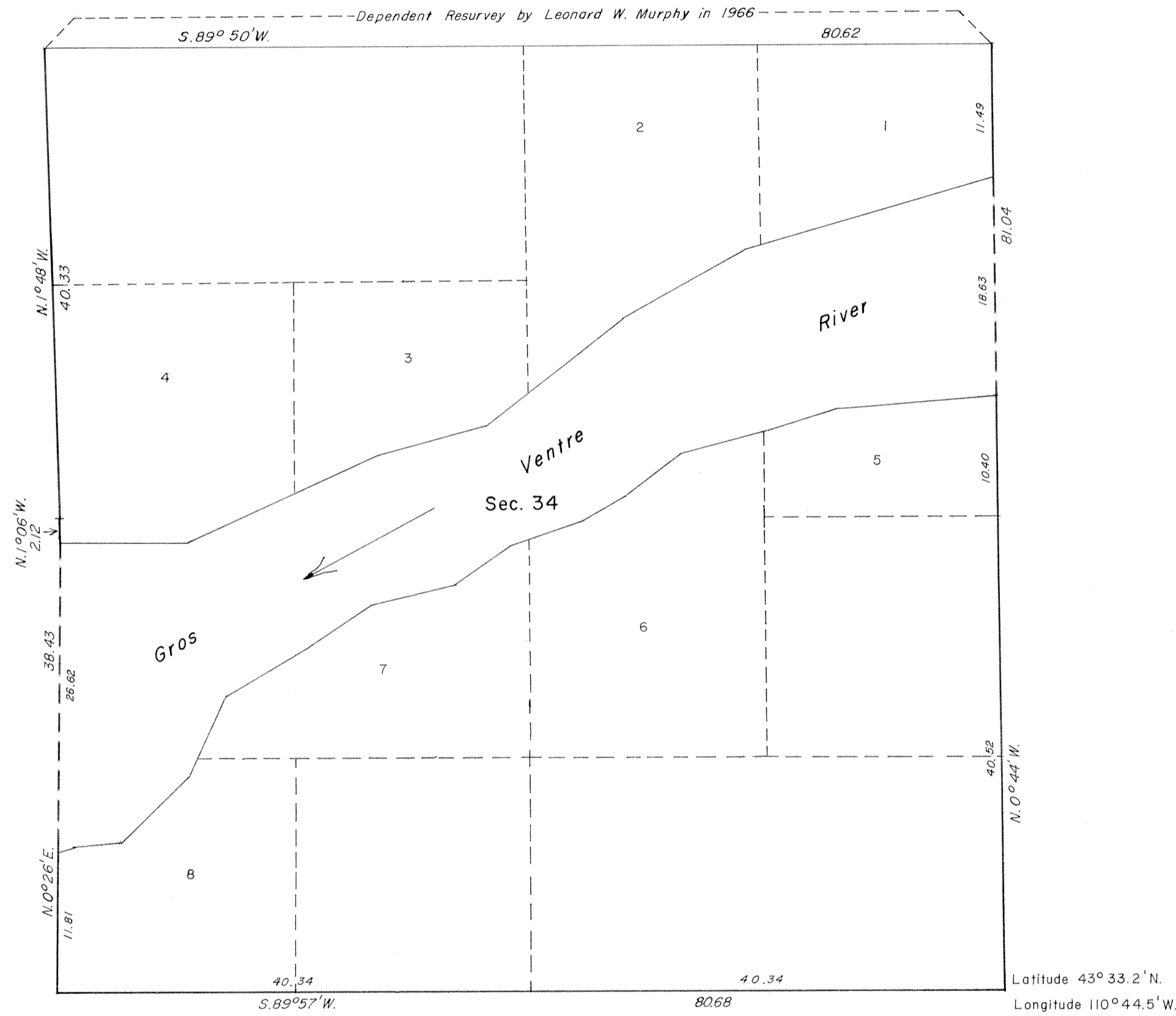
This plat, showing amended lottings, is based upon the official records and the additional use of aerial photography and, having been correctly prepared in accordance with the regulations of this Bureau, is hereby accepted.

For the Director
Richard J. Gates
Chief Cadastral Surveyor for Wyoming



TOWNSHIP 42 NORTH, RANGE 116 WEST OF THE SIXTH PRINCIPAL MERIDIAN, WYOMING

DEPENDENT RESURVEY



A history of surveys is contained in the field notes.

This plat represents the dependent resurvey of a portion of the south boundary, and a portion of the subdivisional lines, designed to restore the corners in their true original locations according to the best available evidence in T. 42 N., R. 116 W., Sixth Principal Meridian, Wyoming.

The lottings and areas are as shown on the plat approved August 16, 1894.

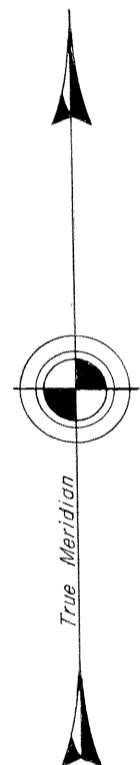
Survey executed by Leonard W. Murphy, Cadastral Surveyor, June 18, 1973 to June 22, 1973, under Special Instructions, dated May 6, 1966, and Amended Special Instructions dated August 7, 1972, which provided for the surveys under Group No. 301-2, Wyoming.

UNITED STATES DEPARTMENT OF THE INTERIOR
BUREAU OF LAND MANAGEMENT
Washington, D.C. September 22, 1977

This plat is strictly conformable to the approved field notes, and the survey, having been correctly executed in accordance with the requirements of law and the regulations of this Bureau, is hereby accepted.

For the Director

Bernard W. Feltz
Chief, Division of Cadastral Survey

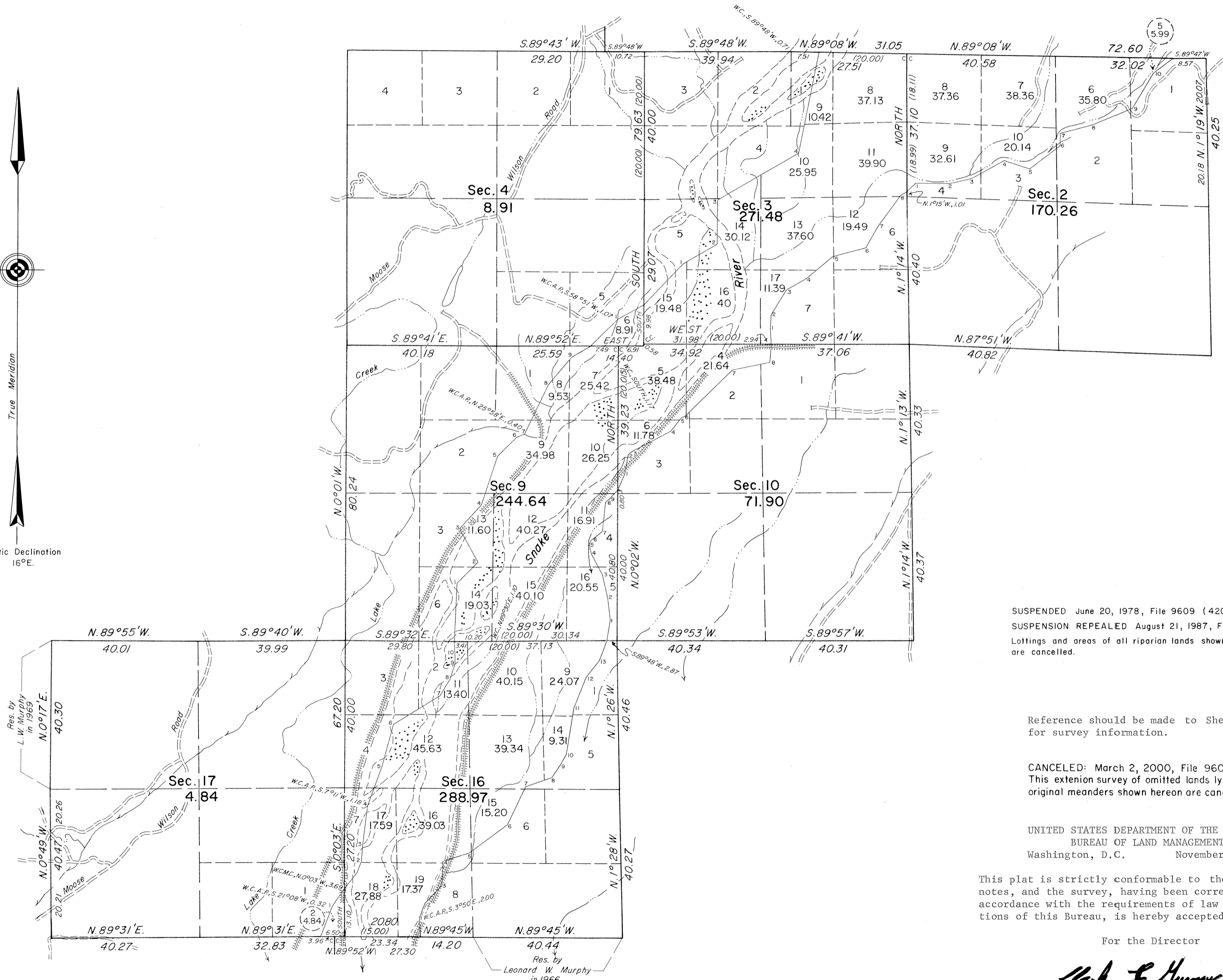
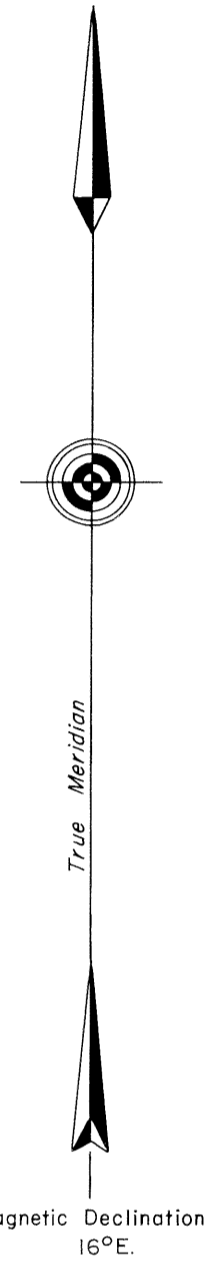


Mean magnetic declination
17° East



TOWNSHIP 42 NORTH, RANGE 116 WEST OF THE SIXTH PRINCIPAL MERIDIAN, WYOMING.

SURVEY OF OMITTED LANDS



SUSPENDED June 20, 1978, File 9609 (420)
SUSPENSION REPEALED August 21, 1987, File 9600 (942)
Lottings and areas of all riparian lands shown hereon
are cancelled.

Reference should be made to Sheet No. 1
for survey information.

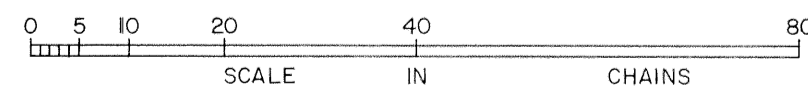
CANCELED: March 2, 2000, File 9600 (957)
This extension survey of omitted lands lying between the
original meanders shown hereon are canceled.

UNITED STATES DEPARTMENT OF THE INTERIOR
BUREAU OF LAND MANAGEMENT
Washington, D.C. November 9, 1973

This plat is strictly conformable to the approved field
notes, and the survey, having been correctly executed in
accordance with the requirements of law and the regula-
tions of this Bureau, is hereby accepted.

For the Director

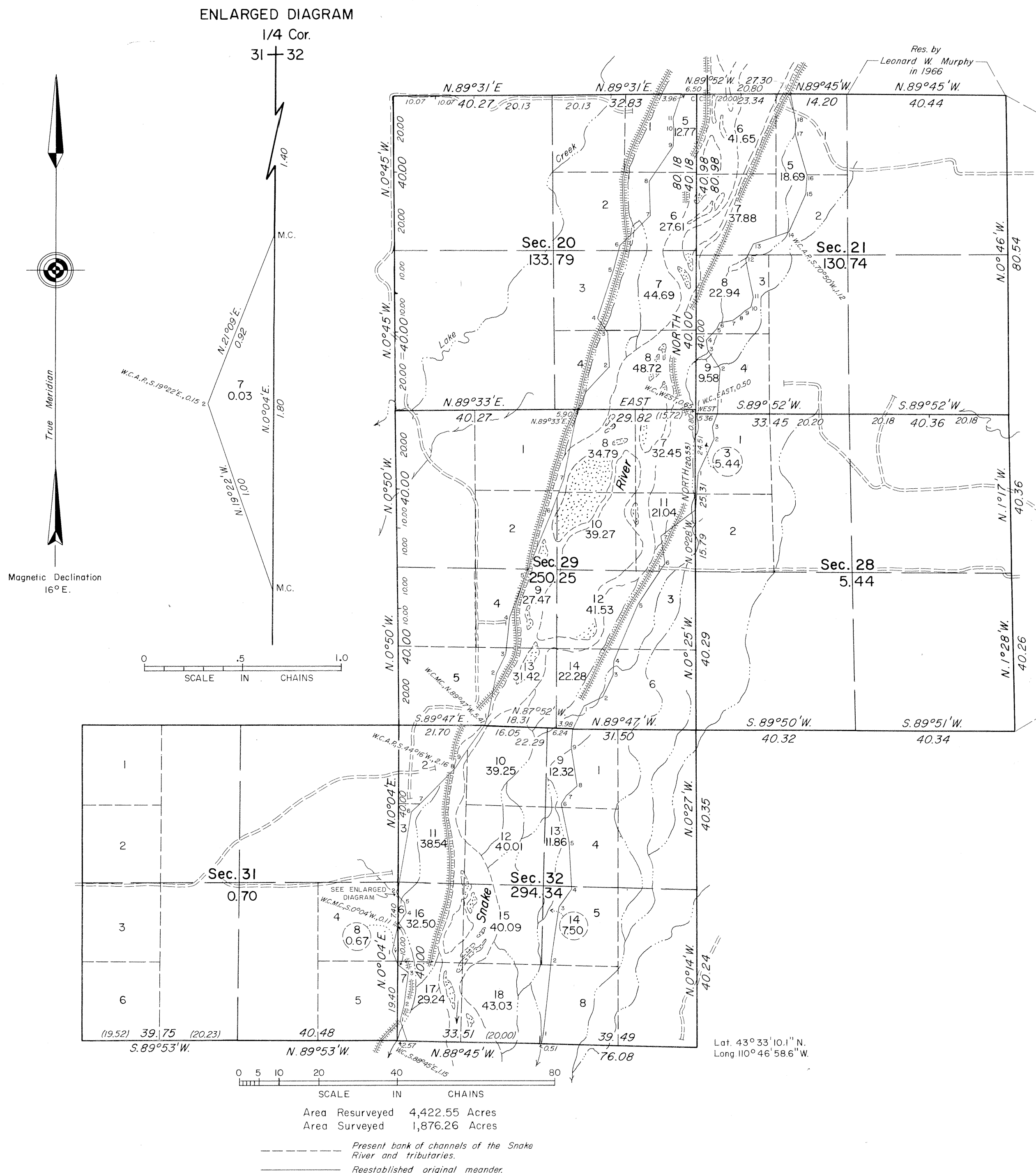
Chief, Division of Cadastral Survey



--- Present bank of channels of the Snake River and tributaries.
— Reestablished original meander.

TOWNSHIP 42 NORTH, RANGE 116 WEST OF THE SIXTH PRINCIPAL MERIDIAN, WYOMING.

SURVEY OF OMITTED LANDS



A history of surveys is contained in the field notes.

This plat, in two sheets, represents a retracement and reestablishment of a portion of the north boundary, a portion of the subdivisional lines and the meander lines of the Snake River designed to restore all corners in their true original locations according to the best available evidence and a survey of lands omitted from the original survey.

Except as indicated, the lottings and areas are as shown on the plat approved August 16, 1894.

The positions of the original meanders of the right and left banks of the Snake River, through T. 42 N., R. 16 W., are shown by irregular lines with numbered angle points. By this survey, the original meanders have been reestablished as fixed and limiting boundaries of previously surveyed lands with the directions and lengths of the several courses and distances adjusted to appropriate meander corner positions.

These surveys were executed by Dennis D. Bland and Wayne M. Gardner, Supervisory Cadastral Surveyors, beginning September 1, 1971 and completed October 13, 1971, under Special Instructions dated April 4, 1962, Supplemental Instructions dated September 1, 1971 and Amended Supplemental Instructions dated November 26, 1971, for Group No. 275, Wyoming.

Channels of the Snake River, as shown hereon, have been taken from field note information, aerial photography and current U.S. Geological Survey topographic maps.

SUSPENDED June 20, 1978, File 9609 (420)
SUSPENSION REPEALED August 21, 1987, File 9600 (942)
Lottings and areas of all riparian lands shown hereon are cancelled.

CANCELED: March 2, 2000, File 9600 (957)
This extension survey of omitted lands lying between the original meanders shown hereon are canceled.

UNITED STATES DEPARTMENT OF THE INTERIOR
BUREAU OF LAND MANAGEMENT
Washington, D.C. November 9, 1973

This plat is strictly conformable to the approved field notes, and the survey, having been correctly executed in accordance with the requirements of law and the regulations of this Bureau, is hereby accepted.

For the Director

Clark F. Humm

Chief, Division of Cadastral Survey

NOTE: SHOULD READ 116 - BY W.O. MEMO. 3/7/74

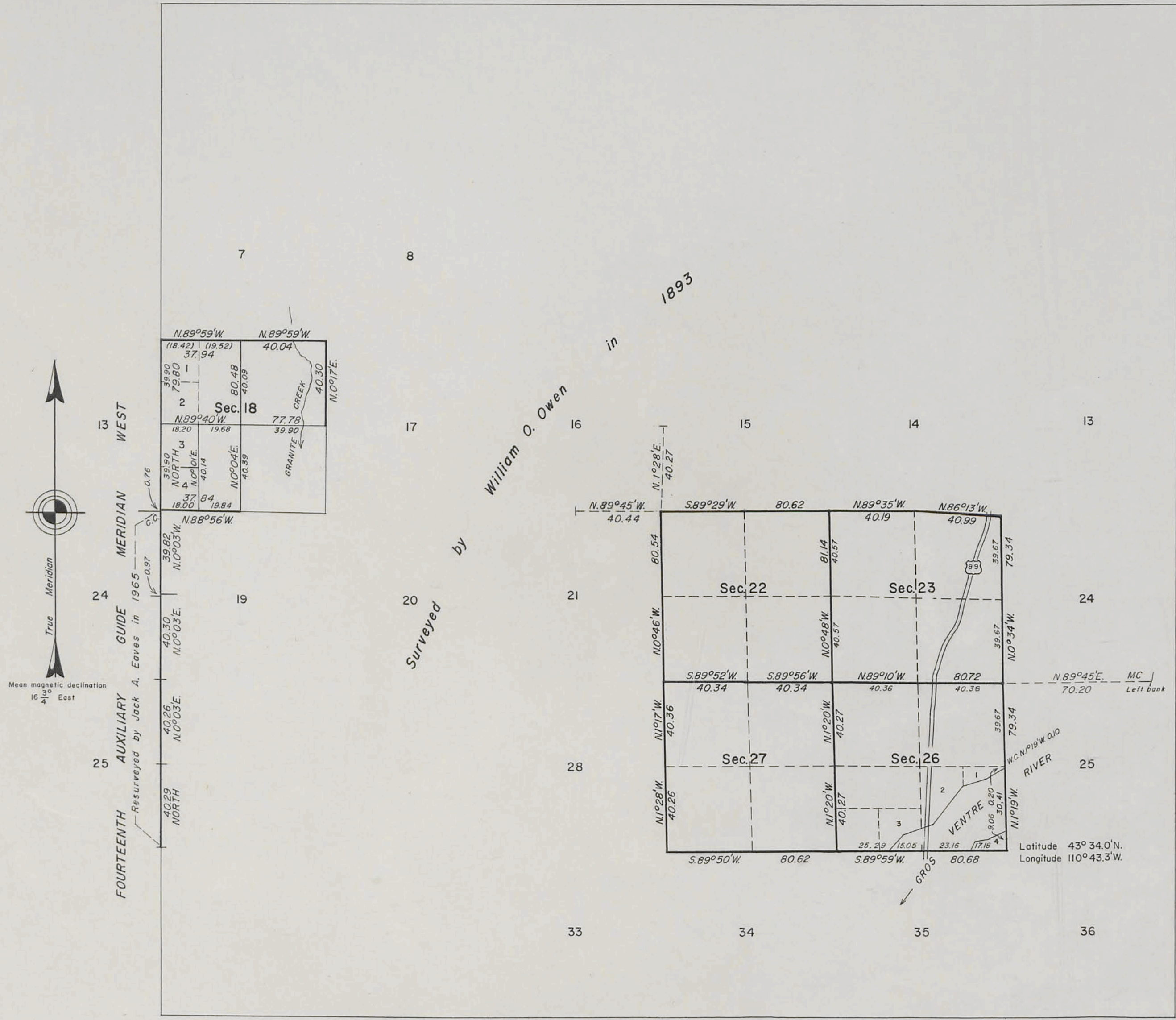
TOWNSHIP 42 NORTH, RANGE 116 WEST OF THE SIXTH PRINCIPAL MERIDIAN, WYOMING DEPENDENT RESURVEY

A history of previous surveys is contained in the field note record.

This plat represents a dependent resurvey of a portion of the Fourteenth Auxiliary Guide Meridian West (west boundary), and a portion of the subdivisional lines, designed to restore the corners in their true original locations according to the best available evidence, and the survey of the subdivision of section 18 in T. 42 N., R. 116 W., Sixth Principal Meridian, Wyoming.

The lottings and areas are as shown on the plat approved August 16, 1894.

These surveys were executed by Leonard W. Murphy, Cadastral Surveyor, beginning June 27, 1966, and completed August 15, 1969, pursuant to Special Instructions dated May 6, 1966, and the Amended Special Instructions dated May 16, 1966, for Group No. 301-2, Wyoming.



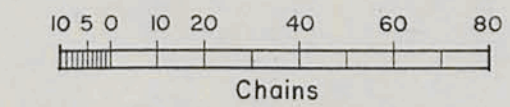
UNITED STATES DEPARTMENT OF THE INTERIOR
BUREAU OF LAND MANAGEMENT
Washington, D. C. March 17, 1971

This plat is strictly conformable to the approved field notes, and the survey, having been correctly executed in accordance with the requirements of law and the regulations of this Bureau, is hereby accepted.

For the Director

Clark F. Mumm

Chief, Division of Cadastral Survey



Area resurveyed: 2,927.26 Acres

Indexed

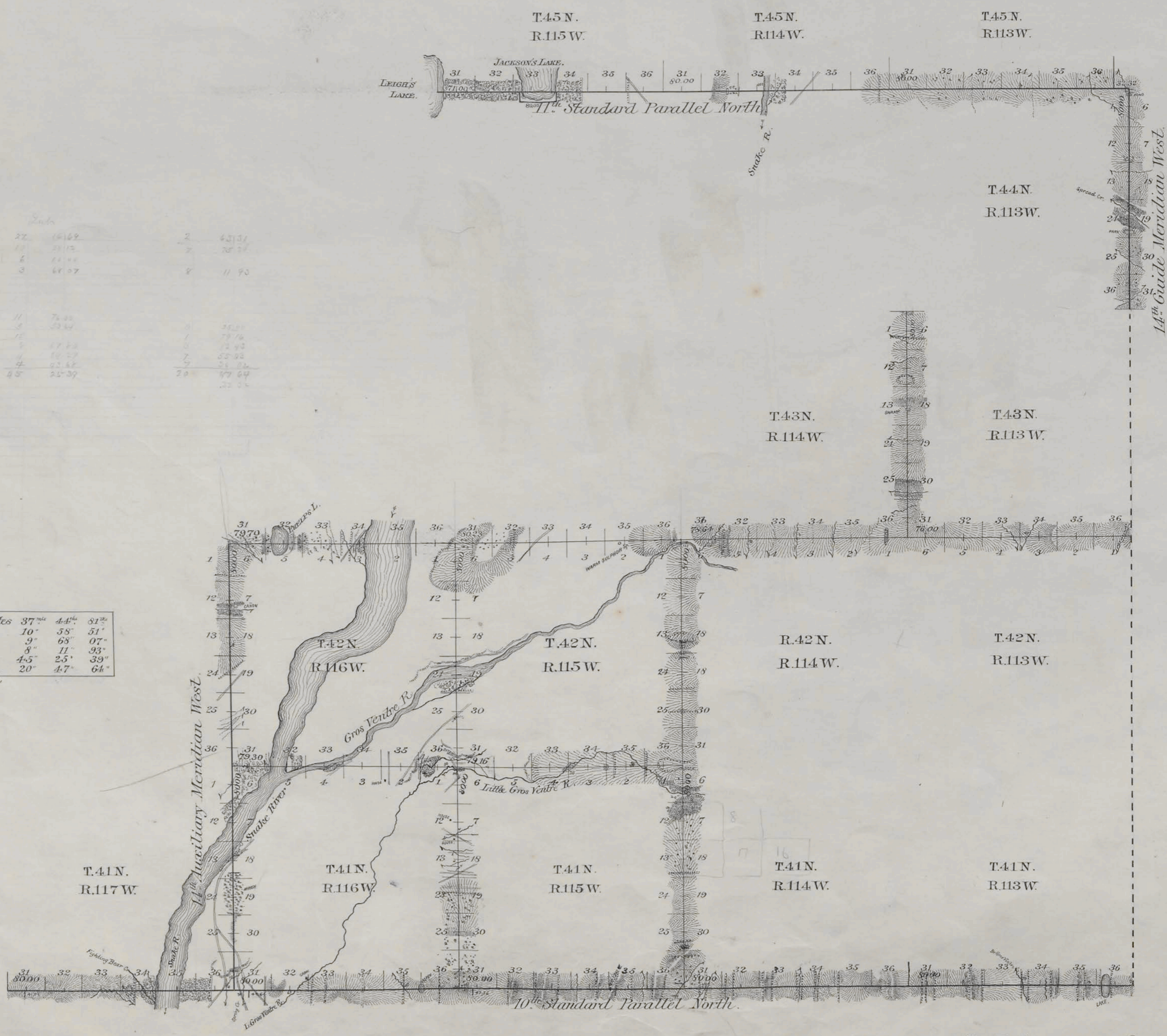
7535

EXTERIOR LINES.

Scale 2 miles to 1 inch. Magnetic Variation East.

Section	Area	Value
1	37	6162
2	38	5815
3	39	5468
4	40	5121
5	41	4774
6	42	4427
7	43	4080
8	44	3733
9	45	3386
10	46	3039
11	47	2692
12	48	2345
13	49	2000
14	50	1653
15	51	1306
16	52	960
17	53	613
18	54	267
19	55	0
20	56	0
21	57	0
22	58	0
23	59	0
24	60	0
25	61	0
26	62	0
27	63	0
28	64	0
29	65	0
30	66	0
31	67	0
32	68	0
33	69	0
34	70	0
35	71	0
36	72	0
37	73	0
38	74	0
39	75	0
40	76	0
41	77	0
42	78	0
43	79	0
44	80	0
45	81	0
46	82	0
47	83	0
48	84	0
49	85	0
50	86	0
51	87	0
52	88	0
53	89	0
54	90	0
55	91	0
56	92	0
57	93	0
58	94	0
59	95	0
60	96	0
61	97	0
62	98	0
63	99	0
64	100	0

Standard lines at intermediate rates	37 th	44 th	51 st
Meridian minimum	10"	58"	51"
Meridian intermediate	9"	63"	07"
Meridian maximum	8"	11"	33"
Township intermediate	4.5"	2.5"	3.9"
Township maximum	20"	4.7"	64"



Surveys Designated	By Whom Surveyed	Date of Contract	Amount of Surveys Mls. Cts.	When Surveyed	Magnetic Declination
10 th Stand. Par. N	Wm O. Owen	Sept 2, 1892	30 00 00	Sept 20-28, 1892	18° 28' East
11 th Stand. Par. N			18 23 32	Oct 22-24	18° 15' - 18° 24'
14 th Guide Mer. W			6 00 00	Oct 20-21	18° 12' - 18° 30'
14 th Auxil.			12 00 00	Oct 2-4	18° 12'
Township Lines			65 73 03	Oct 6-18	18° 12' - 18° 55'

I hereby certify that the above diagram of the Exterior lines of Townships 41 and 42 North, Ranges 115 and 116 West, Townships 43 North, Ranges 113 and 114 West, the 10th and 11th Standard Parallels North, the 14th Guide and the 14th Auxiliary Meridian, west of the 6th Principal Meridian, Wyoming, is strictly conformable to the field notes of survey thereat on file in this office, which have been examined and approved.

Surveyor General's Office,
Cheyenne, Wyo. June 30-1893

A. Richards
U.S. Surveyor General.

2632