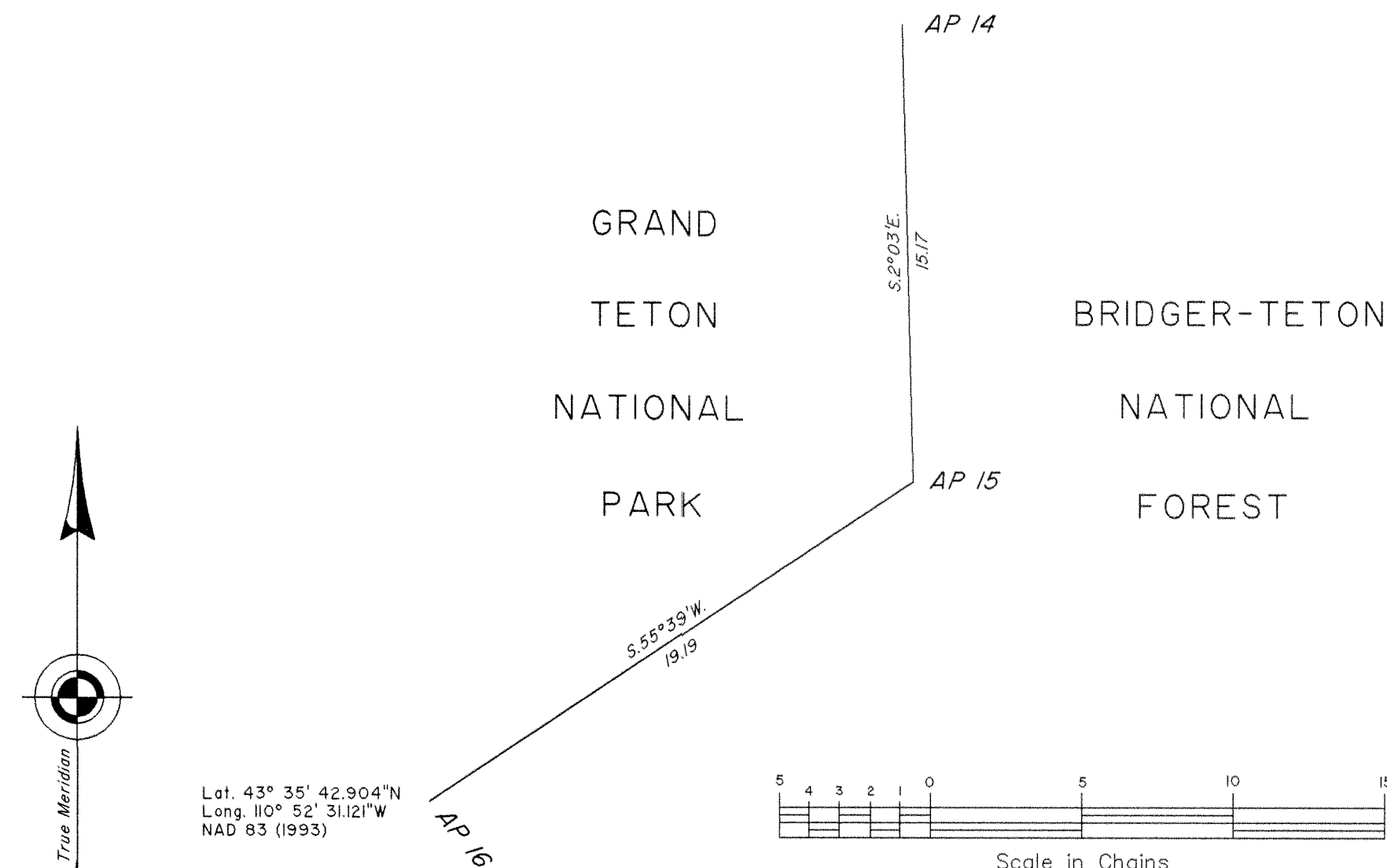


## T. 42 N., R. 117 W., Sixth Principal Meridian, Wyoming, Field Note Links

Plat Accession Number(s)	Year(s) of Survey	
Township Subdivision Plats		
8455	2006	See plat for field notes
8443	2006	See plat for field notes
7940	1992	<a href="https://www.wy.blm.gov/cadastral/countyplats/teton/fieldnotes/t42nr117w_gp555fn.pdf">https://www.wy.blm.gov/cadastral/countyplats/teton/fieldnotes/t42nr117w_gp555fn.pdf</a>
7917	1991	<a href="https://www.wy.blm.gov/cadastral/countyplats/teton/fieldnotes/t42nr117w_gp546fn.pdf">https://www.wy.blm.gov/cadastral/countyplats/teton/fieldnotes/t42nr117w_gp546fn.pdf</a>
7358	1973	<a href="https://www.wy.blm.gov/cadastral/countyplats/teton/fieldnotes/t42nr117w_gp301-2fn.pdf">https://www.wy.blm.gov/cadastral/countyplats/teton/fieldnotes/t42nr117w_gp301-2fn.pdf</a>
7023	1965	<a href="https://www.wy.blm.gov/cadastral/countyplats/teton/fieldnotes/t42nr117w_gp300fn.pdf">https://www.wy.blm.gov/cadastral/countyplats/teton/fieldnotes/t42nr117w_gp300fn.pdf</a>
4822	1918	<a href="https://www.wy.blm.gov/cadastral/countyplats/teton/fieldnotes/t42nr117w_gp046fn.pdf">https://www.wy.blm.gov/cadastral/countyplats/teton/fieldnotes/t42nr117w_gp046fn.pdf</a>
4821	1911	<a href="https://www.wy.blm.gov/cadastral/countyplats/teton/fieldnotes/t42nr117w_gp004fn.pdf">https://www.wy.blm.gov/cadastral/countyplats/teton/fieldnotes/t42nr117w_gp004fn.pdf</a>
4820	1902	<a href="https://www.wy.blm.gov/cadastral/countyplats/teton/fieldnotes/t42nr117w_c288fn.pdf">https://www.wy.blm.gov/cadastral/countyplats/teton/fieldnotes/t42nr117w_c288fn.pdf</a>
Township Exterior Plats		
4897	1912	<a href="https://www.wy.blm.gov/cadastral/countyplats/teton/fieldnotes/retext2938.pdf">https://www.wy.blm.gov/cadastral/countyplats/teton/fieldnotes/retext2938.pdf</a>
4535	1892	<a href="https://www.wy.blm.gov/cadastral/countyplats/teton/fieldnotes/ext2632.pdf">https://www.wy.blm.gov/cadastral/countyplats/teton/fieldnotes/ext2632.pdf</a>

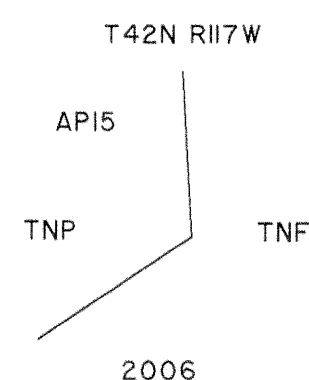
## TOWNSHIP 42 NORTH, RANGE 117 WEST, OF THE SIXTH PRINCIPAL MERIDIAN, WYOMING.



Mean  
Magnetic  
Declination  
12 3/4° E.

Point for angle point 15, at proportionate distance by the method of irregular boundary adjustment; there was no remaining evidence of the original corner position.

Set a brass tablet, 3 1/2 ins. diam., 2 1/2 ins. stem, flush with granite bedrock, in a drill hole, with top mkd.



From which new bearing objects:

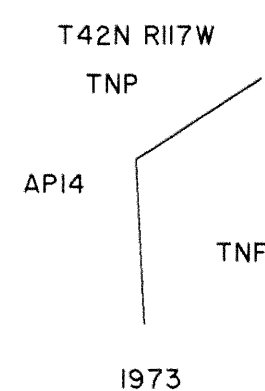
Center of northern most concrete anchor of the aerial tramway from Teton Village, bears N. 23° 33' E., 1.20 chs. distance.

Center of the southern most concrete anchor of the above aerial tramway, bears N. 24° 51' E., 1.00 chs. distance.

The northern support for the above aerial tramway, bears N. 76° 28' E., 2.49 chs. distance.

The southern support for the above aerial tramway, bears N. 84° 34' E., 2.35 chs. distance.

Angle point 14, monumented with an iron post, 2 1/2 ins. diam., firmly set, projecting 6 ins. above the ground, in a mound of stone, 2 ft. base to top, with brass cap mkd.



This plat represents the entire record of the survey of a portion of the boundary between the Grand Teton National Park and the Bridger-Teton National Forest, along the hydrographic divide as defined by Congressional Act, February 26, 1929, Public Law 70-817, within the unsurveyed portion of Township 42 North, Range 117 West, Sixth Principal Meridian, Wyoming.

The surveyed lines depicted on this plat are not intended to define the boundary between the Grand Teton National Park and the Bridger-Teton National Forest; the boundary is a natural feature described as the "main hydrographic divide immediately south of Granite Canyon."

Leonard W. Murphy surveyed a portion of the boundary, along the hydrographic divide, between the Grand Teton National Park and the Bridger-Teton National Forest in 1973.

A survey request was made for the restoration of the lost angle point 15, and additional angle points (previously approved under this same group number), to better define the hydrographic divide, dated August 25, 2006, from Jim Bellamy, Deputy Superintendent, Grand Teton National Park.

## SURVEY INFORMATION AND CERTIFICATE

The survey was executed with Trimble Model 5800 Global Positioning System (GPS) receivers and a Leica TC800 Total Station. The instruments were maintained in proper adjustment at all times. The GPS procedures used were in accordance with IM No. 2001-186, "Standard Guidelines for Cadastral Surveys Using Global Positioning System Methods" dated July 26, 2001. The directions of all lines are referenced to the true meridian. The directions, distances, and geographic positions were determined by GPS observations. GPS control and supporting data are contained in the official group file.

I, Sonja S. Sparks, Cadastral Surveyor, HEREBY CERTIFY upon honor that, in pursuance of Special Instructions dated September 12, 2006, and Assignment Instructions dated September 12, 2006, for Group Number 764, Wyoming, I have surveyed a portion of the boundary between the Grand Teton National Park and Bridger-Teton National Forest, along the hydrographic divide, within the unsurveyed portion of Township 42 North, Range 117 West, Sixth Principal Meridian, Wyoming, and that this plat in one sheet represents the entire record of this survey. Survey commenced September 19, 2006, and completed July 3, 2007, and has been made in strict conformity with the special instructions, the Manual of Instructions for the Survey of the Public Lands of the United States, 1973, and in specific manner described hereon.

*Sonja S. Sparks*  
Sonja S. Sparks  
Cadastral Surveyor

September 17, 2007  
Date

UNITED STATES DEPARTMENT OF THE INTERIOR  
BUREAU OF LAND MANAGEMENT

Cheyenne, Wyoming

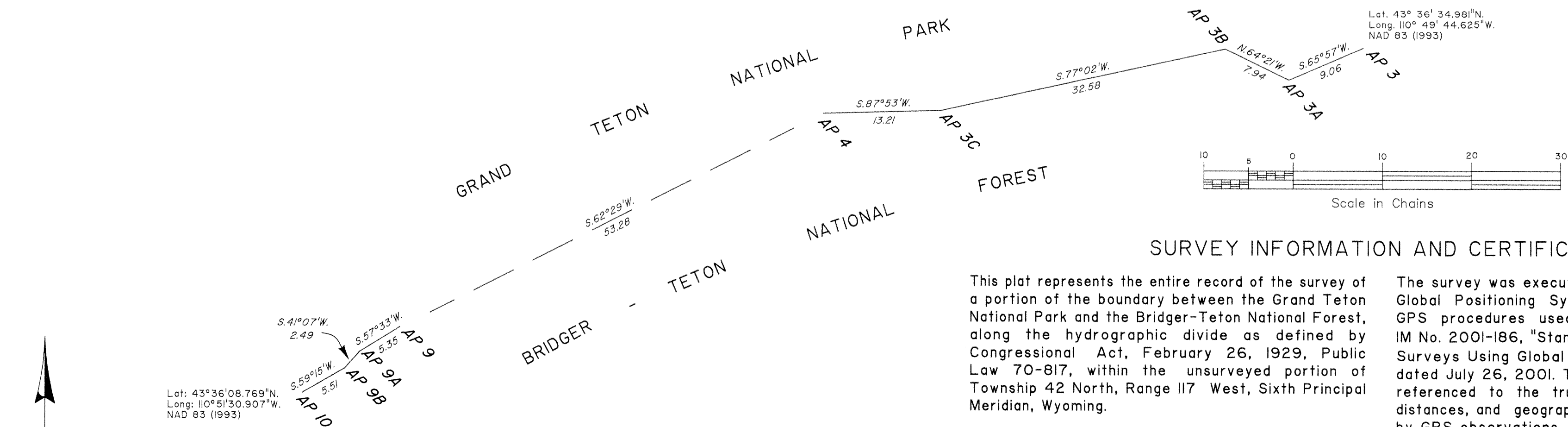
September 17, 2007

This plat representing the entire record of this survey, having been correctly executed in accordance with the requirements of law and the regulations of this Bureau, is hereby accepted.

For the Director

*John P. Lee*  
John P. Lee  
Chief Cadastral Surveyor for Wyoming

## TOWNSHIP 42 NORTH, RANGE 117 WEST, OF THE SIXTH PRINCIPAL MERIDIAN, WYOMING.



Angle point 3, monumented with an iron post, 2 1/2 ins. diam., firmly set, projecting 2 ins. in a mound of stone, 3 ft. base to top, with brass cap mkd.

T42N R117W

TNP

AP3

TNF

1973

From which original bearing trees:

A dead pine, 30 ins. diam., 20 ft. tall, bears N. 30° E., 30 lks. dist., with healed blaze. (Record: fir tree, 36 ins. diam., bears N. 31° E., 27 lks. dist.)

A dead double stem pine, 20 ins. diam., 50 ft. tall, bears S. 78° E., 38 lks. dist., with scribe marks AP3 BT visible on open blaze. (Record: S. 73° 30' E., 36 lks. dist.)

Point selected for angle point 3C along the hydrographic divide.

Set a brass tablet, 3 1/2 ins. diam., 2 1/2 ins. stem, flush with large granite boulder on ridge top, steep drop off to N., forested area to S., in a drill hole, with top mkd.

T42N R117W

TNP

AP3C TNF

2006

Angle point 4, monumented with an iron post, 2 1/2 ins. diam., firmly set, projecting 4 ins. from a mound of stone, 3 ft. base to top, with brass cap mkd.

T42N R117W

TNP

AP4

TNF

1973

This plat represents the entire record of the survey of a portion of the boundary between the Grand Teton National Park and the Bridger-Teton National Forest, along the hydrographic divide as defined by Congressional Act, February 26, 1929, Public Law 70-817, within the unsurveyed portion of Township 42 North, Range 117 West, Sixth Principal Meridian, Wyoming.

The surveyed lines depicted on this plat are not intended to define the boundary between the Grand Teton National Park and the Bridger-Teton National Forest; the boundary is a natural feature described as the "main hydrographic divide immediately south of Granite Canyon."

Leonard W. Murphy surveyed a portion of the boundary, along the hydrographic divide, between the Grand Teton National Park and the Bridger-Teton National Forest in 1973.

A survey request was made for the restoration of the lost angle point 15 (not approved at this date), and additional angle points to better define the hydrographic divide, dated August 25, 2006, from Jim Bellamy, Deputy Superintendent, Grand Teton National Park.

The survey was executed with Trimble Model 5700 Global Positioning System (GPS) receivers. The GPS procedures used were in accordance with IM No. 2001-186, "Standard Guidelines for Cadastral Surveys Using Global Positioning System Methods" dated July 26, 2001. The directions of all lines are referenced to the true meridian. The directions, distances, and geographic positions were determined by GPS observations. GPS control and supporting data are contained in the official group file.

I, Sonja S. Sparks, Cadastral Surveyor, HEREBY CERTIFY upon honor, that in pursuance of Special Instructions dated September 12, 2006, and Assignment Instructions dated September 12, 2006, for Group Number 764, Wyoming, I have surveyed a portion of the boundary between the Grand Teton National Park and the Bridger-Teton National Forest, along the hydrographic divide, within the unsurveyed portion of Township 42 North, Range 117 West, Sixth Principal Meridian, Wyoming, and that this plat in one sheet represents the entire record of this survey. Survey commenced September 19, 2006, and completed September 20, 2006, and has been made in strict conformity with the special instructions, the Manual of Instructions for the Survey of the Public Lands of the United States, 1973, and in specific manner described hereon.

*Sonja S. Sparks*  
Sonja S. Sparks  
Cadastral Surveyor

January 31, 2007

Date

UNITED STATES DEPARTMENT OF THE INTERIOR  
BUREAU OF LAND MANAGEMENT

Cheyenne, Wyoming

January 31, 2007

This plat representing the entire record of this survey, having been correctly executed in accordance with the requirements of law and the regulations of this Bureau, is hereby accepted.

For the Director

*John P. Lee*  
John P. Lee

Chief Cadastral Surveyor for Wyoming

Point selected for angle point 3A along the hydrographic divide.

Set a brass tablet, 3 1/2 ins. diam., 2 1/2 ins. stem, flush with granite boulder on ridge top, 4 ft. x 4 ft. x 2 ft. high, in a drill hole, with top mkd.

T42N R117W

TNP

AP3A TNF

2006

Point selected for angle point 3B along the hydrographic divide.

Set a stainless steel post, 2 1/2 ins. diam., 28 ins. long., on bedrock, against a granite boulder to N., supported by a collar of stone, 3 ft. base to top, with brass cap mkd.

T42N R117W

AP3B TNF

TNF

2006

Angle point 9, located 2 ft. W. of small radio tower, monumented with an iron post, 2 1/2 ins. diam., firmly set, projecting 8 ins. above the ground, with a mound of stone, 2 ft. base, 2 ft. high, SW. of cor., with brass cap mkd.

T42N R117W

TNP

AP9

TNF

1973

Point selected for angle point 9A along the hydrographic divide.

Set a brass tablet, 3 1/2 ins. diam., 2 1/2 ins. stem, flush with granite bedrock on ridge top, in a drill hole, with top mkd.

T42N R117W

TNP

AP9A TNF

TNF

2006

Point selected for angle point 9B along the hydrographic divide.

Set a brass tablet, 3 1/2 ins. diam., 2 1/2 ins. stem, flush with granite bedrock on ridge top, in a drill hole, with top mkd.

T42N R117W

TNP

AP9B TNF

TNF

2006

Angle point 10, monumented with an iron post, 2 1/2 ins. diam., firmly set, projecting 12 ins. above the ground, with a mound of stone, 2 ft. base, 1 ft. high, W. of cor., with brass cap mkd.

T42N R117W

TNP

AP10

TNF

1973

TOWNSHIP 42 NORTH, RANGE 117 WEST, OF THE SIXTH PRINCIPAL MERIDIAN, WYOMING.  
METES AND BOUNDS SURVEY

## CURVE DATA "A"

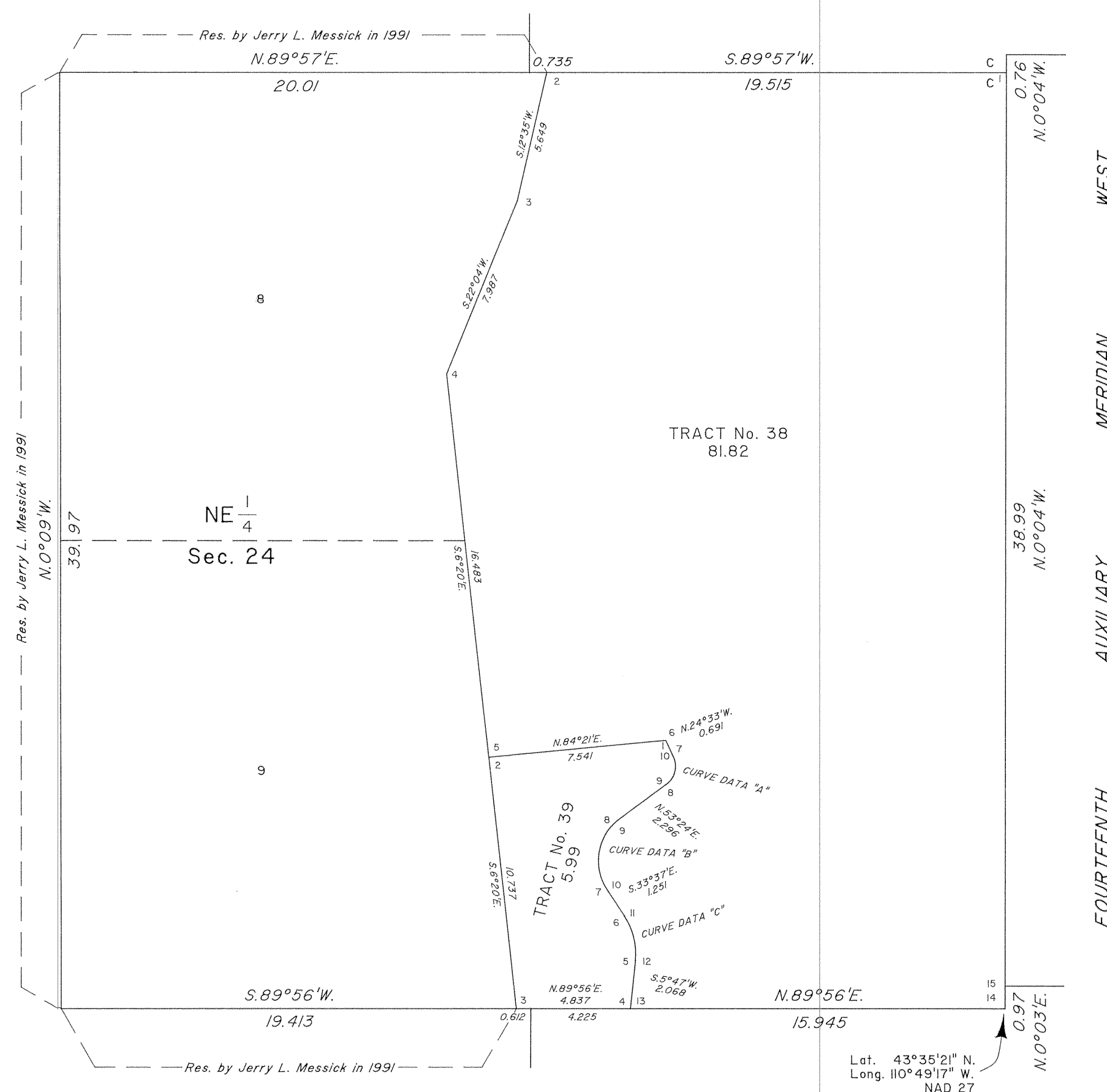
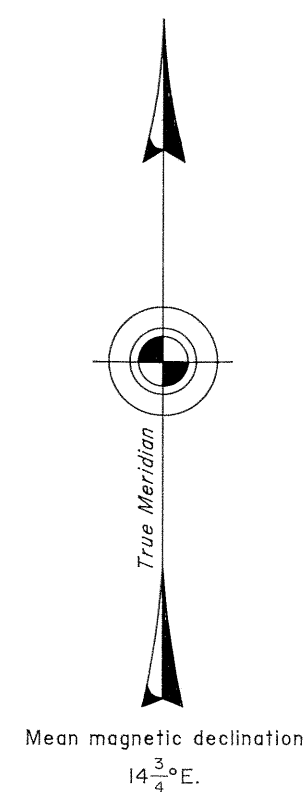
Chord Bearing  $N.14^{\circ}22'E.$   
Chord Length 1.336 Chs.  
Radius 1.061 Chs.  
Length of Arc 1.445 Chs.

## CURVE DATA "B"

Chord Bearing  $N.9^{\circ}53'E.$   
Chord Length 3.187 Chs.  
Radius 2.313 Chs.  
Length of Arc 3.516 Chs.

## CURVE DATA "C"

Chord Bearing  $N.13^{\circ}54'W.$   
Chord Length 1.940 Chs.  
Radius 2.879 Chs.  
Length of Arc 1.979 Chs.



A history of surveys is contained in the field notes.

This plat represents the metes and bounds survey of Tract Nos. 38 and 39, T. 42 N., R. 117 W., Sixth Principal Meridian, Wyoming.

Except as indicated hereon, the lottings and areas are as shown on the plat accepted October 9, 1991.

Survey executed by Jerry L. Messick, Supervisory Cadastral Surveyor, beginning January 23, 1992, and completed January 29, 1992, pursuant to Special Instructions dated January 23, 1992, for Group No. 555, Wyoming.

UNITED STATES DEPARTMENT OF THE INTERIOR  
BUREAU OF LAND MANAGEMENT

Cheyenne, Wyoming

June 8, 1992

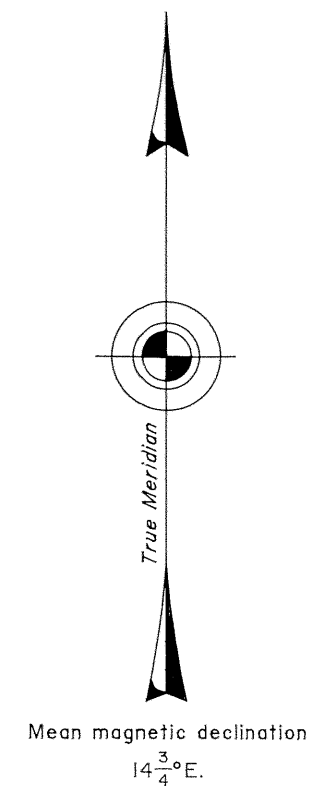
This plat is strictly conformable to the approved field notes, and the survey, having been correctly executed in accordance with the requirements of law and the regulations of this Bureau, is hereby accepted.

For the Director

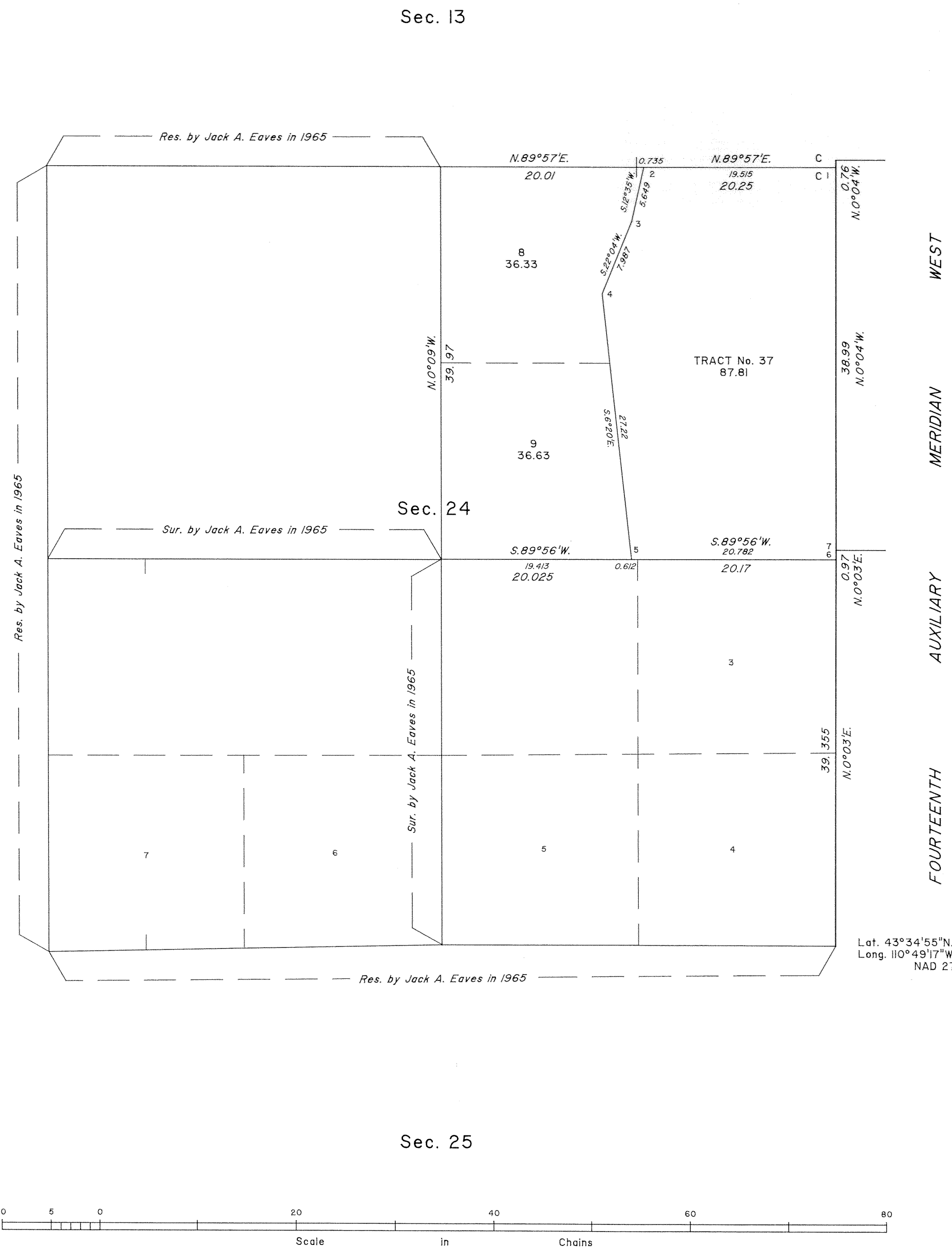
*John P. Lee*  
Chief Cadastral Surveyor for Wyoming



TOWNSHIP 42 NORTH, RANGE 117 WEST, OF THE SIXTH PRINCIPAL MERIDIAN, WYOMING.  
DEPENDENT RESURVEY AND METES AND BOUNDS SURVEY



Sec. 23



A history of surveys is contained in the field notes.

This plat represents the dependent resurvey of portions of the Fourteenth Auxiliary Meridian West, through T. 42 N., between Rs. 116 and 117 W., subdivisional lines and subdivision of section 24 designed to restore the corners in their true original locations according to the best available, and the metes and bounds survey of Tract No. 37, T. 42 N., R. 117 W., Sixth Principal Meridian, Wyoming.

Except as indicated hereon, the lottings and areas are as shown on the plat approved December 13, 1912.

Survey executed by Jerry L. Messick, Supervisory Cadastral Surveyor, beginning July 10, 1991, and completed July 23, 1991, pursuant to Special Instructions dated July 8, 1991, for Group No. 546, Wyoming.

UNITED STATES DEPARTMENT OF THE INTERIOR  
BUREAU OF LAND MANAGEMENT

Cheyenne, Wyoming

October 9, 1991

This plat is strictly conformable to the approved field notes, and the survey, having been correctly executed in accordance with the requirements of law and the regulations of this Bureau, is hereby accepted.

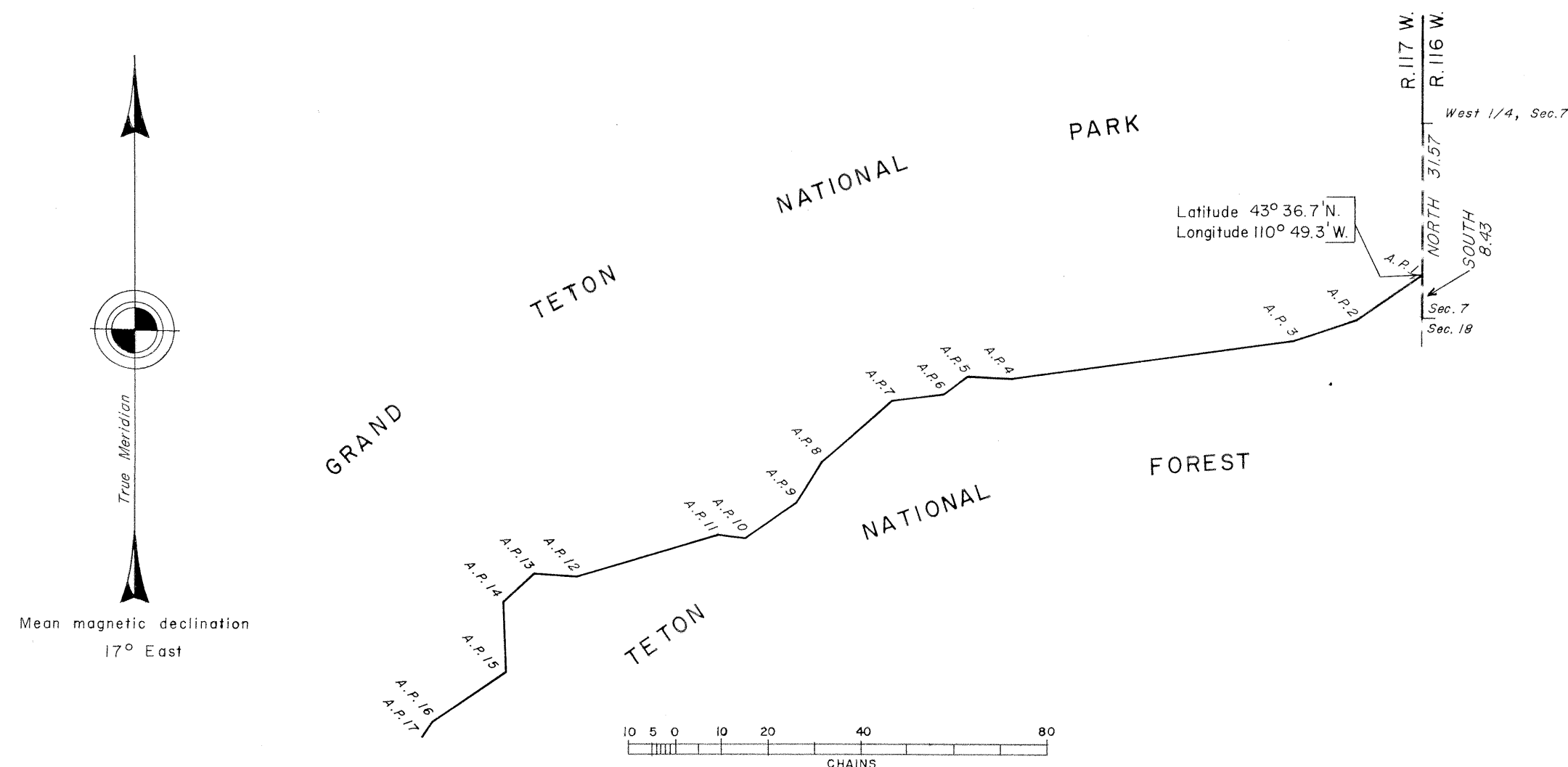
For the Director

Chief Cadastral Surveyor for Wyoming

## TOWNSHIP 42 NORTH, RANGE 117 WEST OF THE SIXTH PRINCIPAL MERIDIAN, WYOMING

## Survey of the Boundary

A.P. 1	S. 54° 56' W.	16.78
A.P. 2	S. 71° 04' W.	14.29
A.P. 3	S. 82° 25' W.	60.90
A.P. 4	N. 86° 51' W.	10.12
A.P. 5	S. 52° 33' W.	6.56
A.P. 6	S. 83° 26' W.	11.34
A.P. 7	S. 48° 02' W.	20.34
A.P. 8	S. 31° 59' W.	10.30
A.P. 9	S. 55° 12' W.	13.26
A.P. 10	N. 82° 37' W.	6.19
A.P. 11	S. 73° 12' W.	31.48
A.P. 12	N. 86° 02' W.	9.03
A.P. 13	S. 47° 30' W.	8.89
A.P. 14	S. 2° 04' E.	15.16
A.P. 15	S. 55° 39' W.	19.18
A.P. 16	S. 35° 51' W.	3.93
A.P. 17		



A history of surveys is contained in the field notes.

This plat represents the survey of a portion of the boundary between the Grand Teton National Park and the Teton National Forest within the unsurveyed portion of T. 42 N., R. 117 W., Sixth Principal Meridian, Wyoming.

Survey executed by Leonard W. Murphy, Cadastral Surveyor, August 6, 1973, to August 10, 1973, under Special Instructions dated May 6, 1966, and Amended Special Instructions dated August 7, 1972, which provided for the surveys under Group No. 301-2, Wyoming.

UNITED STATES DEPARTMENT OF THE INTERIOR  
BUREAU OF LAND MANAGEMENT  
Washington, D.C. September 22, 1977

This plat is strictly conformable to the approved field notes, and the survey, having been correctly executed in accordance with the requirements of law and the regulations of this Bureau, is hereby accepted.

For the Director

*Bernard W. Foster*  
Chief, Division of Cadastral Survey

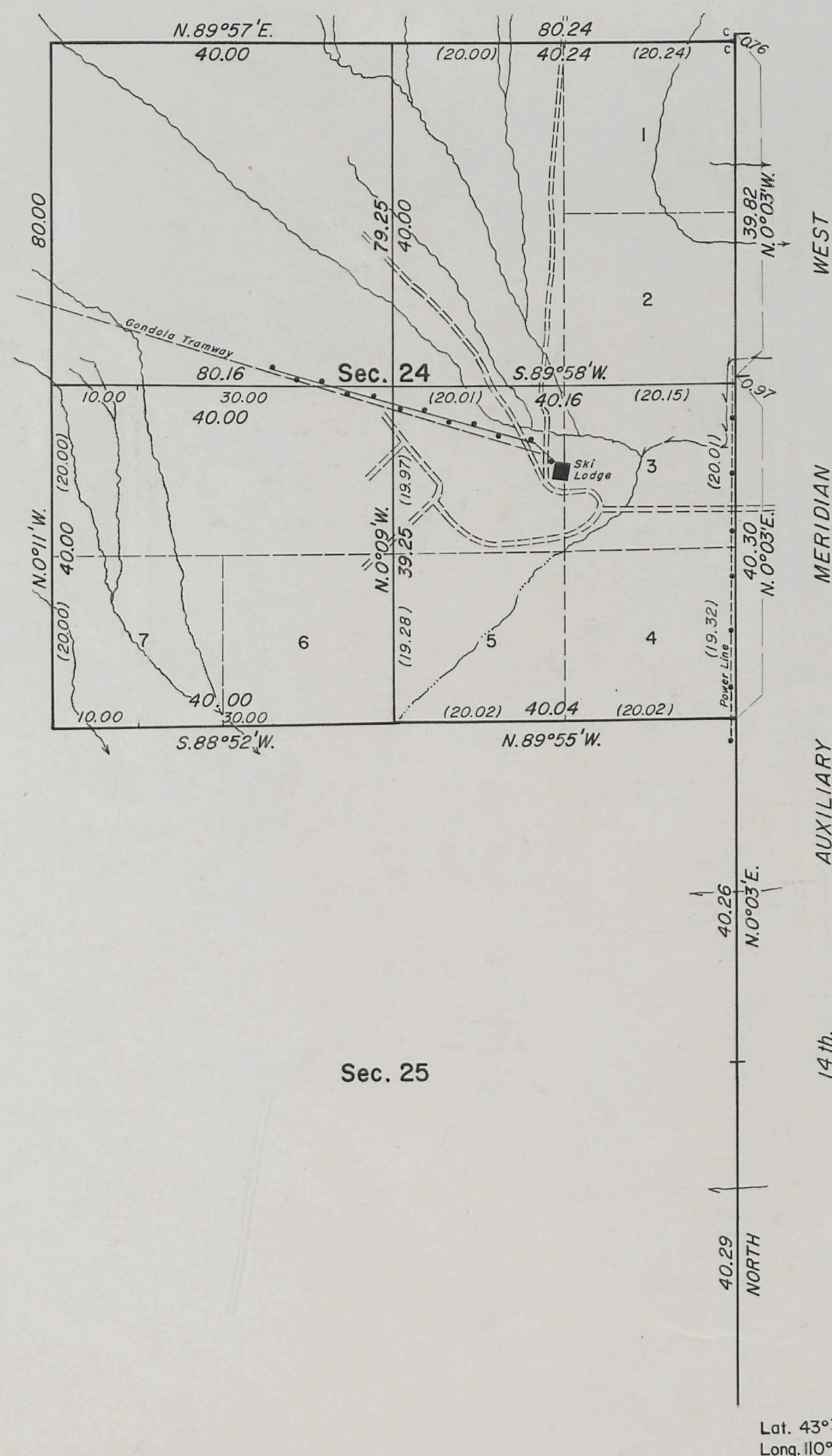


7022

ORIGINAL

# TOWNSHIP 42 NORTH, RANGE 117 WEST OF THE SIXTH PRINCIPAL MERIDIAN, WYOMING.

## DEPENDENT RESURVEY AND SUBDIVISION OF SECTION 24



This plat represents a retracement and reestablishment of a portion of the Fourteenth Auxiliary Meridian West through T. 42 N., and the north, south, and west boundaries of section 24, designed to restore the corners in their true original locations according to the best available evidence, and, the partial subdivision of section 24, T. 42 N., R. 117 W., Sixth Principal Meridian, Wyoming. The lottings and areas are as shown on the plat approved December 13, 1912.

The history of prior surveys is contained in the field note record.

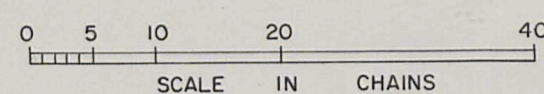
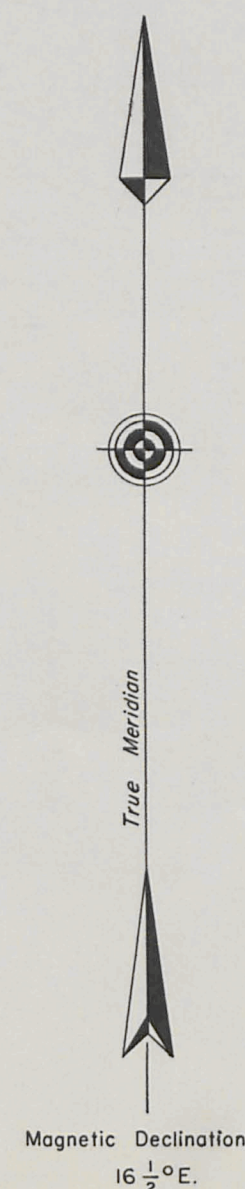
This dependent resurvey and partial subdivision of section 24 was executed by Jack A. Eaves, Supervisory Cadastral Surveyor, beginning June 2, 1965, and completed June 15, 1965, pursuant to Special Instructions for Group No. 300, Wyoming, dated June 1, 1965.

UNITED STATES DEPARTMENT OF THE INTERIOR  
BUREAU OF LAND MANAGEMENT  
Washington, D. C. March 29, 1967

This plat is strictly conformable to the approved field notes, and the survey, having been correctly executed in accordance with the requirements of law and the regulations of this Bureau, is hereby accepted.

For the Director

*E. J. Lemington*  
Chief, Division of Engineering



Area Resurveyed 636.83 Acres

2881-C

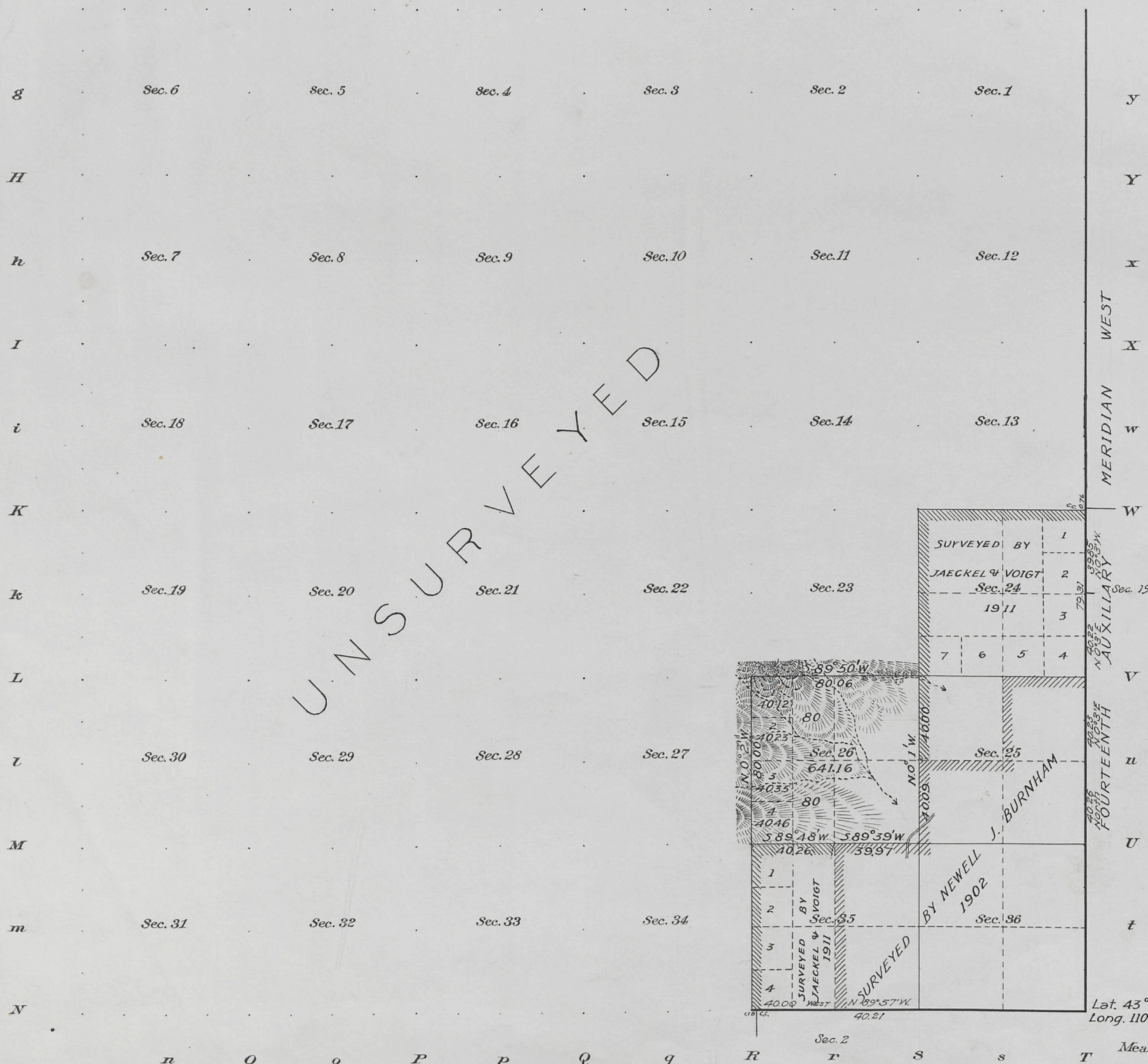
42-117



Township N<sup>o</sup> 42 North Range N<sup>o</sup> 117 West of the Sixth Principal Meridian, Wyoming

Survey accepted March 29, 1920 G.L.O.

G f F e E d D c C b B a A



Surveys Designated.	By Whom Surveyed.	Group		Amount of Surveys			When Surveyed.	
		No.	Date	Mls.	chs.	lks.	Begun.	Completed.
Subdivisions	Hans D. Voigt	46	Mar. 23, 1918	2	00	06	Sept. 24, 1918	Sept. 24, 1918
Subdivisions	Jaekel & Voigt	4	May 3, 1911	1	00	26	" 27, 1911	Oct. 4, 1911
Subdivisions	Newell J. Burnham	288	June 25, 1901	1	00	06	Aug. 18, 1902	Aug. 19, 1902

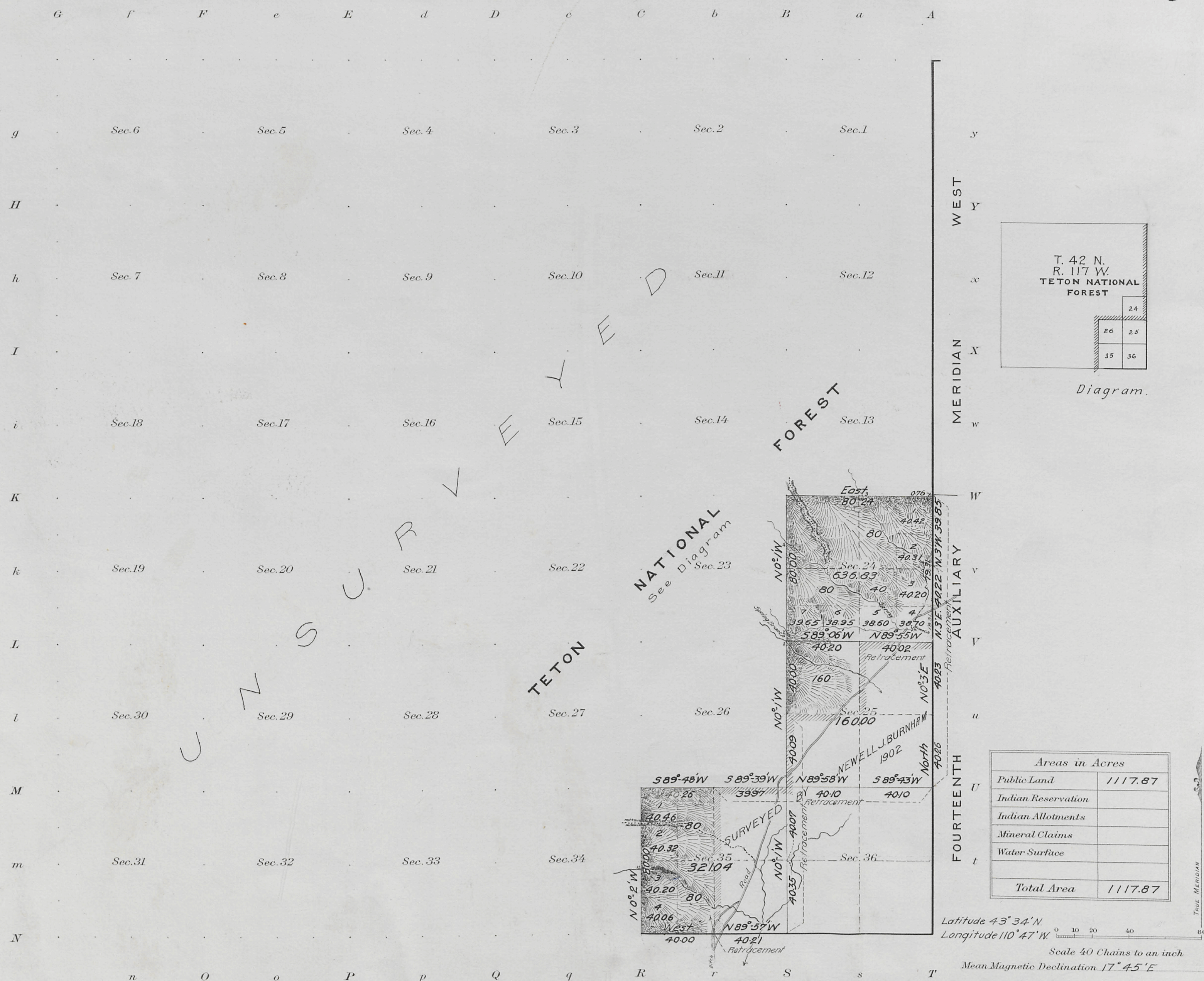
The above map of Township No. 42 North Range No 117 West of the Sixth Principal Meridian Wyoming is strictly conformable to the field notes of the survey thereof on file in this office, which have been examined and approved.

U. S. Surveyor General's Office,  
Cheyenne, Wyoming November 14, 1919

*Charles J. Decker*  
Surveyor General.



**Fractional Township No. 42 North, Range No. 117 West of the Sixth Principal Meridian, Wyoming**



Surveys Designated	By Whom Surveyed	Group		Amount of Surveys			When Surveyed	
		No.	Date	Mls.	chs.	fks.	Begun	Completed
RETRACEMENT								
East & S. Township Lines	Jaechel & Voigt	4	May 3, 1911	2	40	77	Sept. 20, 1911	Oct. 4, 1911
RETRACEMENT								
Subdivision Lines	" "	"	" "	3	40	70	Sept. 26, 1911	Oct. 4, 1911
Subdivision Lines	" "	"	" "	4	40	70	Sept. 27, 1911	Oct. 4, 1911
Connections	" "	"	" "			76	Oct. 3, 1911	Oct. 3, 1911
S. Township Line	" "	"	" "			40	Oct. 4, 1911	Oct. 4, 1911
S. Township Line	Newell J. Burnham	250	June 25, 1901			40	July 17, 1902	July 17, 1902
E. Township Line	William O. Owen	250	September 2, 1892	2	00	00	Oct. 4, 1892	Oct. 4, 1892

M. H. K. Topog.  
R. H. Calculations

The above map of Township No. 42 North, Range No. 117 West of the Sixth Principal Meridian, Wyoming is strictly conformable to the field notes of the survey thereof on file in this office, which have been examined and approved.

U. S. Surveyor General's Office.

Cheyenne, Wyoming, December 13, 1912

*Stephen P. Harman*  
Surveyor General.

Accepted by the Hon. Commissioner in his letter E. Jan. 31, 1913.  
Duplicate plat mailed to the Emmonson Land Office, May 3, 1913.

42-117



*Fractional Township N<sup>o</sup> 42 North, Range N<sup>o</sup> 117 West of the 6<sup>th</sup> Principal Meridian*

[illegible]

<i>Survey Designated</i>	<i>By Whom Surveyed</i>	<i>Date of Contract</i> <i>Nº.</i>	<i>Amount of Surveys</i> <i>M. Ch.² Lk.²</i>	<i>When Surveyed</i>
<i>Southern</i> <i>Township line</i>	<i>Newell J. Burnham</i>	<i>288 June 25, 1901.</i>	<i>1 40 00</i>	<i>July 17, 1902.</i>
<i>Subdivisions</i>	<i>" " "</i>	<i>" " "</i>	<i>3 40 10</i>	<i>August 18-19, 1902.</i>
<i>East Boundary</i>	<i>William O. Owen</i>	<i>250 Sept. 2, 1892</i>	<i>6 00 00</i>	<i>October 3, 1892.</i>

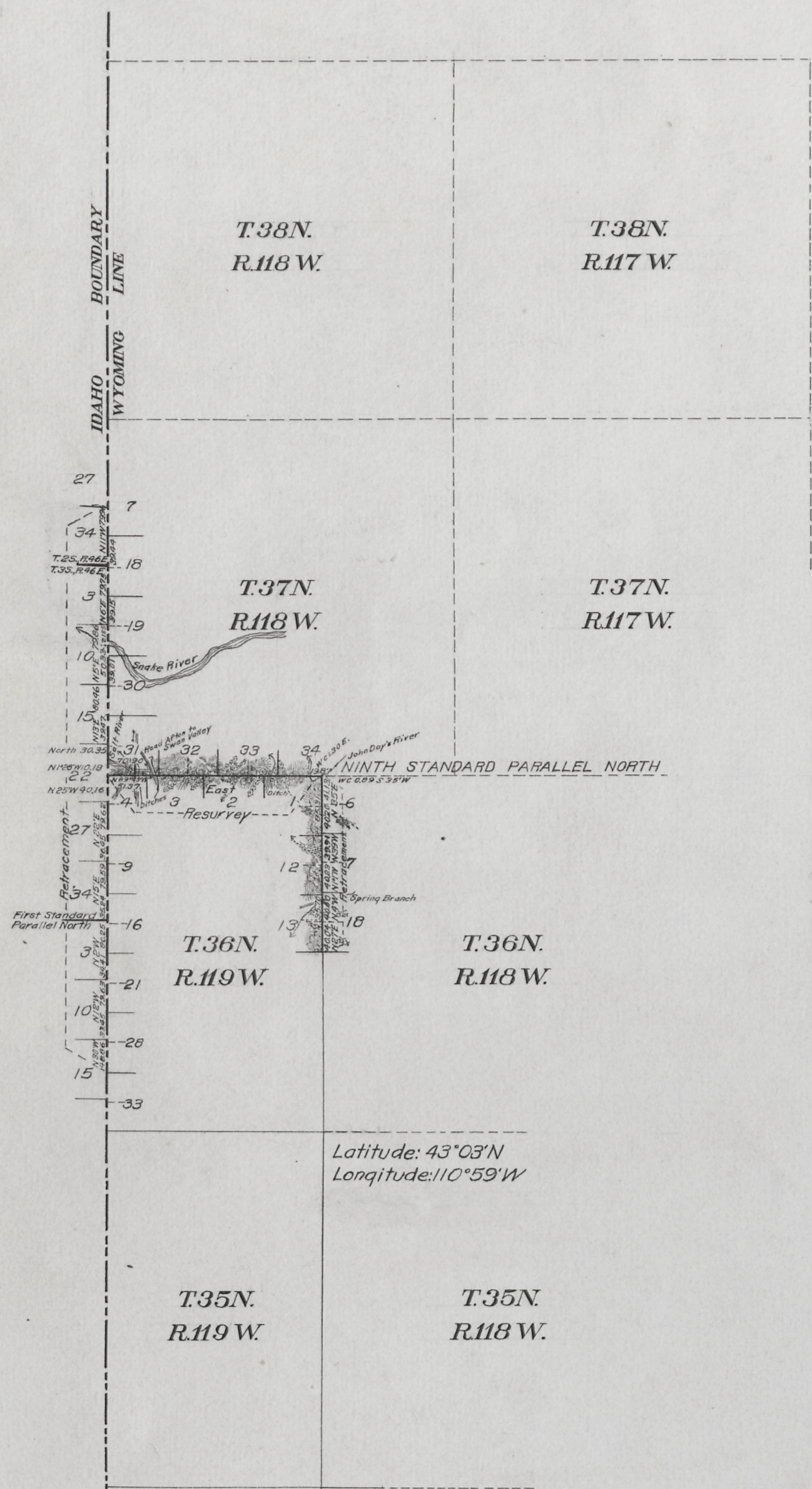
The above Map of Township N. 42 North of Range N. 117 West of the  
 6th Principal Meridian, Wyoming is strictly conformable to the field  
 notes of the survey thereof on file in this Office, which have been examined and approved.  
 Surveyor General's Office. *Nathan D. Hanson*  
 Cheyenne, Wyoming. April 23, 1908. *Sur. Gen.*

*Triplicate plat forwarded Sept. 1, 1903  
Survey accepted by the Hon. Commissioner  
in his letter "E", dated Aug. 27, 1903*



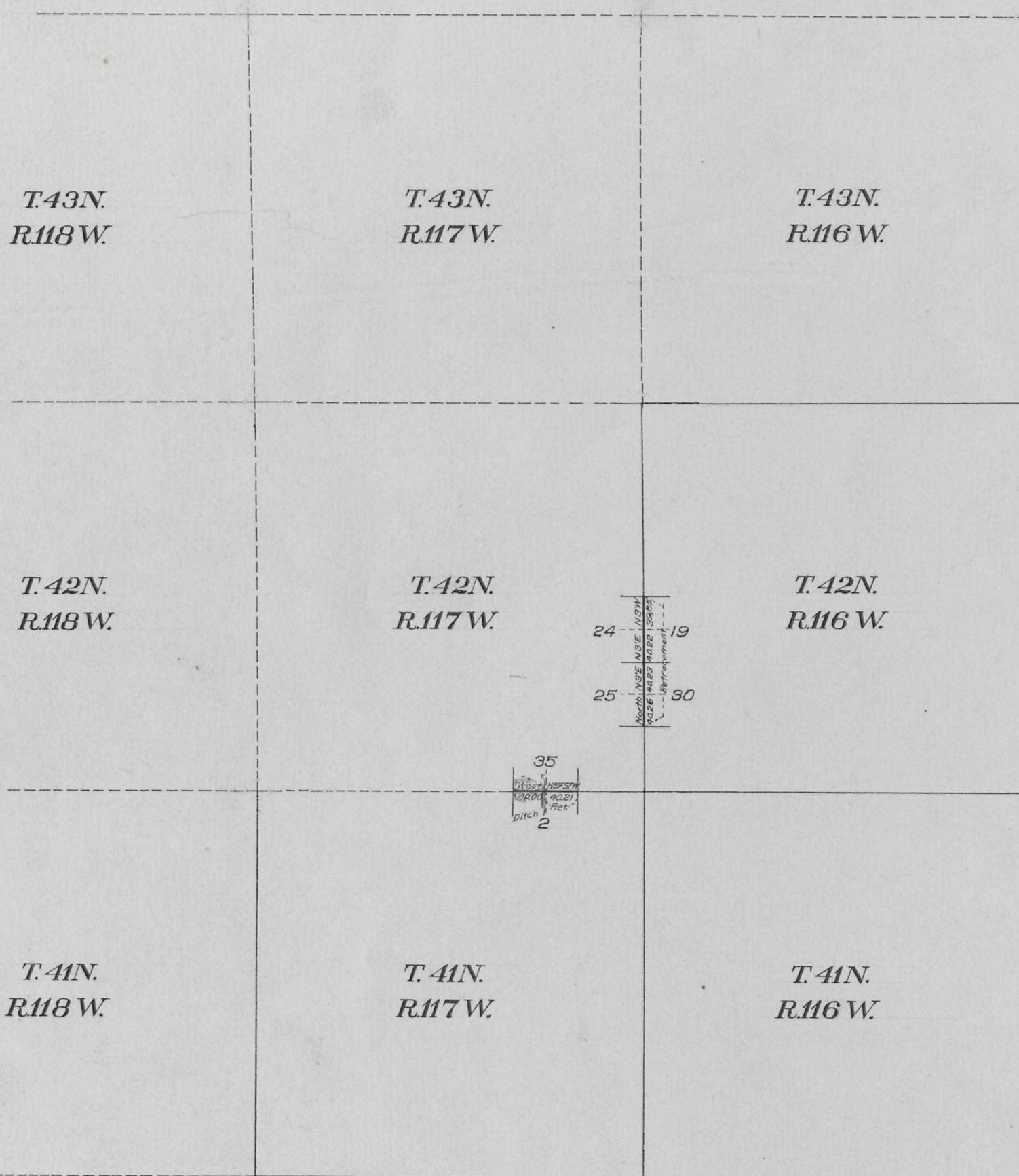
## TOWNSHIP EXTERIORS

Scale: 1 inch to 160 chains



This Plat  
of the resurvey of the  
Ninth Standard Parallel North through a portion of Range 118 West;  
the retracement of a portion of the  
West Boundary of the State of Wyoming through a part of  
T. 36 N., R. 119 W. & T. 37 N., R. 118 W.,  
East Boundary of T. 36 N., R. 119 W.,  
East and South Boundaries of T. 42 N., R. 117 W.;  
and the survey of a portion of the  
South Boundary of T. 42 N., R. 117 W.,  
of the  
Sixth Principal Meridian, Wyoming  
is strictly conformable to the field notes of the resurvey thereof  
by  
Jaechel and Voigt, U.S. Surveyor and U.S. Transitman  
under their  
assignment to Group N<sup>o</sup> 4  
dated May 3, 1911,  
which have been examined, approved and filed in this office.  
U.S. Surveyor General's Office  
Cheyenne, Wyoming, August 9, 1913

*Stephen P. Johnson*  
Surveyor General



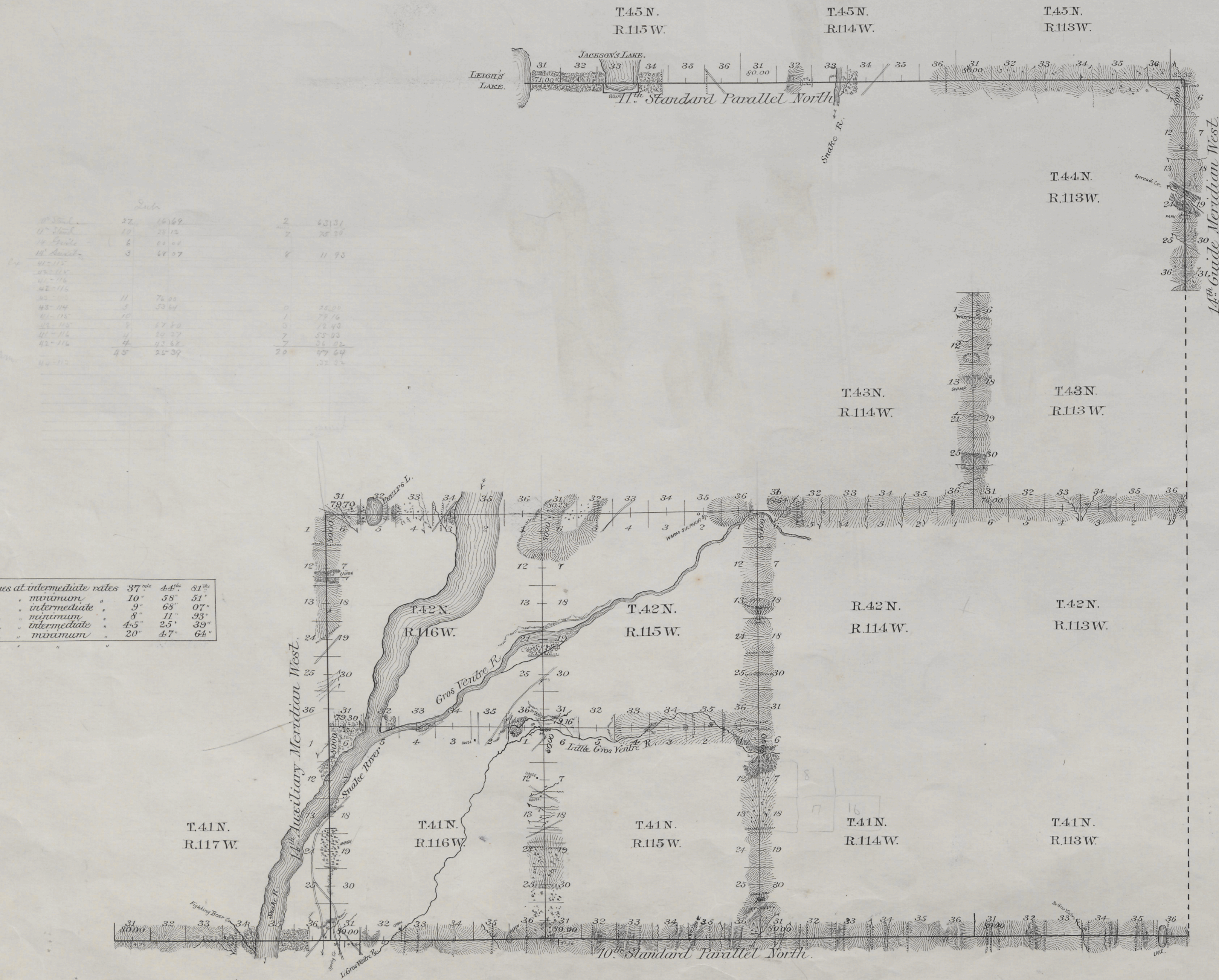
Surveys Designated	Amount			When surveyed
	Mls.	Chs.	Lks.	
Resurvey Standard Lines	3	30	90	July 25-August 7, 1912
Retracement W. Bdy of Wyo.	9	48	67	July 23-September 7, 1912
Retracement Township Lines	5	42	28	Sept. 20, 1911-Aug. 8, 1912
Township Lines		40	00	October 4, 1911
Connections		19	87	August 8, 1912

Accepted by the Ass<sup>t</sup> Commissioner, in letter March 5, 1914.



# EXTERIOR LINES.

Scale 2 miles to 1 inch. Magnetic Variation East.



Standard lines at intermediate rates	37 <sup>m</sup>	44 <sup>m</sup>	51 <sup>m</sup>
Meridian " minimum "	10"	58"	51"
Meridian " intermediate "	9"	63"	07"
Meridian " maximum "	8"	11"	33"
Township " intermediate "	4-5	2-5	3-9
Township " maximum "	20"	4-7	6-4

Surveys Designated	By Whom Surveyed	Date of Contract	Amount of Surveys Mls. Chs.	When Surveyed	Magnetic Declination
10 <sup>th</sup> Stand. Par. N.	Wm. O. Owen	Sept. 2, 1892	30 00 00	Sept. 20-28, 1892	18° 28' East
11 <sup>th</sup> Stand. Par. N.	"	"	18 23 32	Oct. 22-24, "	18° 15' 18" 24"
14 <sup>th</sup> Guide Mer. W.	"	"	6 00 00	Oct. 20-21, "	18° 12' 18" 30"
14 <sup>th</sup> Auxil.	"	"	12 00 00	Oct. 2-4, "	18° 12' "
Township Lines	"	"	65 73 03	Oct. 6-18, "	18° 12' 18" 55"

I hereby certify that the above diagram of the Exterior lines of Townships 41 and 42 North, Ranges 115 and 116 West, Townships 43 North, Ranges 113 and 114 West, the 10<sup>th</sup> and 11<sup>th</sup> Standard Parallels North, the 14<sup>th</sup> Guide and the 14<sup>th</sup> Auxiliary Meridian, west of the 6<sup>th</sup> Principal Meridian, Wyoming, is strictly conformable to the field notes of survey thereon on file in this office, which have been examined and approved.

Surveyor General's Office,  
Cheyenne, Wyo. June 30-1893

*Wm. A. Richards*  
U.S. Surveyor General.