

## T. 43 N., R. 113 W., Sixth Principal Meridian, Wyoming, Field Note Links

Plat Accession Number(s)	Year(s) of Survey	Township Exterior Plats
4535	1892	<a href="https://www.wy.blm.gov/cadastral/countyplats/teton/fieldnotes/ext2632.pdf">https://www.wy.blm.gov/cadastral/countyplats/teton/fieldnotes/ext2632.pdf</a>

*Indep't*

7535

*Revised filed Nov. 23-93*

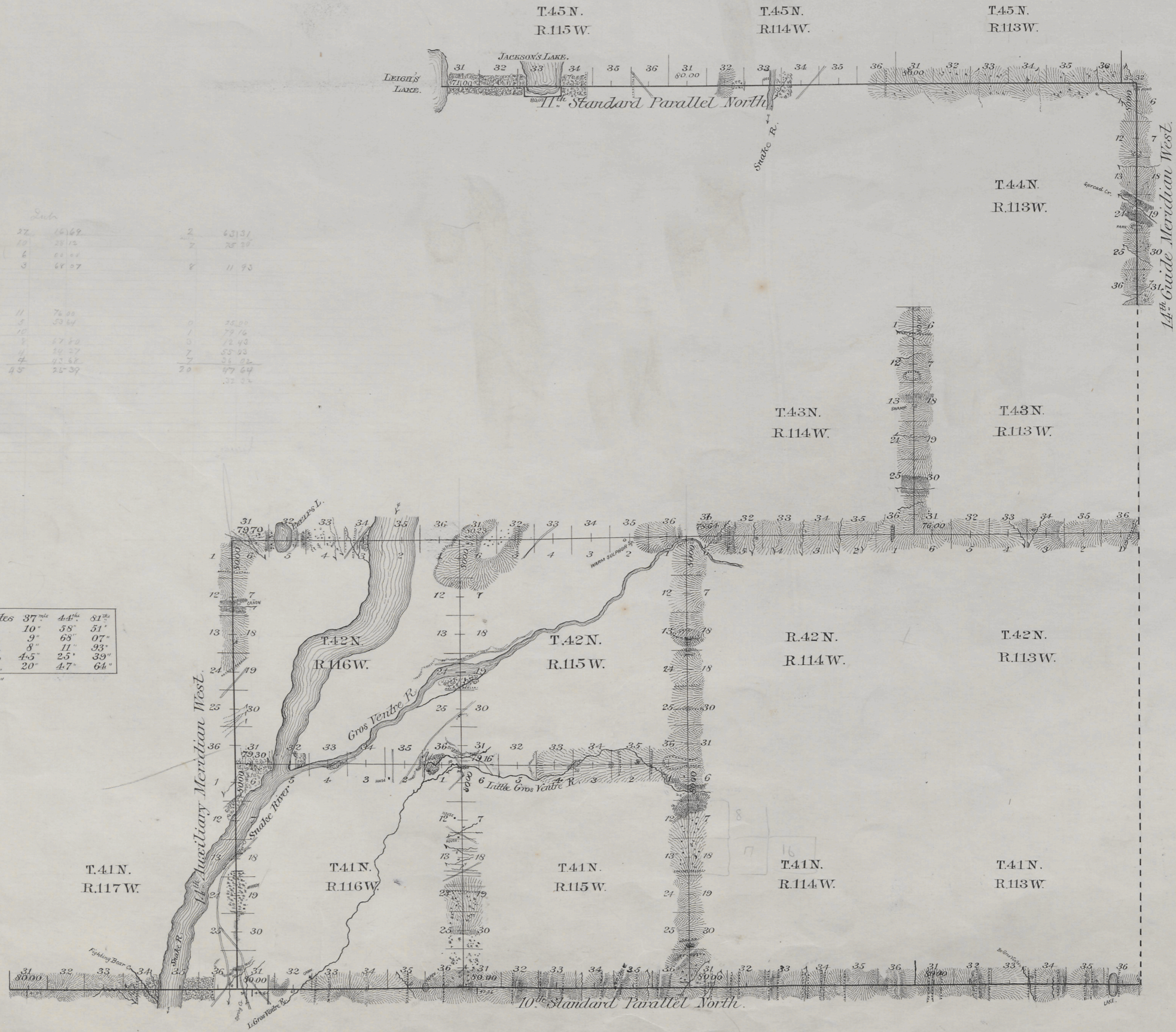
# EXTERIOR LINES.

*Scale 2 miles to 1 inch. Magnetic Variation East.*

*Sub*

31	6169	2	6013
32	5812	2	5656
33	6144	3	5888
34	6197	4	5937
35	7400	0	7250
36	5354	1	5203
37	6772	0	6622
38	5627	7	5550
39	6252	7	6085
40	5137	20	4917
41	6024		5824

Standard lines at intermediate rates	37 <sup>m</sup>	44 <sup>m</sup>	51 <sup>m</sup>
"    "    "    "    "    "    "	10"	58"	51"
Meridian	intermediate	9"	63"
"    "    "    "    "    "    "	minimum	8"	11"
Township	intermediate	4.5"	2.5"
"    "    "    "    "    "    "	minimum	20"	4.7"



Surveys Designated	By Whom Surveyed	Date of Contract	Amount of Surveys Mls. Cts.	When Surveyed	Magnetic Declination
10 <sup>th</sup> Stand. Par. N	Wm O. Owen	Sept 2, 1892	30 00 00	Sept 20-28, 1892	18° 28' East
11 <sup>th</sup> Stand. Par. N			18 23 32	Oct 22-24	18° 15' - 18° 24'
14 <sup>th</sup> Guide Mer. W			6 00 00	Oct 20-21	18° 12' - 18° 30'
14 <sup>th</sup> Auxil.			12 00 00	Oct 2-4	18° 12'
Township Lines			65 73 03	Oct 6-18	18° 12' - 18° 55'

I hereby certify that the above diagram of the Exterior lines of Townships 41 and 42 North, Ranges 115 and 116 West, Townships 43 North, Ranges 113 and 114 West, the 10<sup>th</sup> and 11<sup>th</sup> Standard Parallels North, the 14<sup>th</sup> Guide and the 14<sup>th</sup> Auxiliary Meridian, west of the 6<sup>th</sup> Principal Meridian, Wyoming, is strictly conformable to the field notes of survey thereat on file in this office, which have been examined and approved.

Surveyor General's Office,  
Cheyenne, Wyo. June 30-1893

*A. Richards*  
U.S. Surveyor General.

## T. 43 N., R. 113 W., Sixth Principal Meridian, Wyoming, Homestead Entry Survey Links

Plat Accession Number(s)	Year(s) of Survey	
5343	1917	Homestead Entry Survey No. 203 (Sections 26 and 27) <a href="https://www.wy.blm.gov/cadastral/homesteads/200-255/hes203.pdf">https://www.wy.blm.gov/cadastral/homesteads/200-255/hes203.pdf</a>