

T. 43 N., R. 116 W., Sixth Principal Meridian, Wyoming, Field Note Links

Plat Accession Number(s)	Year(s) of Survey	Township Subdivision Plats
7357	1972	https://www.wy.blm.gov/cadastral/countyplats/teton/fieldnotes/t43nr116w_gp301-2fn.pdf
6515	1951	https://www.wy.blm.gov/cadastral/countyplats/teton/fieldnotes/t43nr116w_gp225fn_s25.pdf
4816	1916	https://www.wy.blm.gov/cadastral/countyplats/teton/fieldnotes/t43nr116w_gp040fn.pdf
4816	1916	https://www.wy.blm.gov/cadastral/countyplats/teton/fieldnotes/t43nr116w_gp040fn_bnd.pdf
4815	1902	https://www.wy.blm.gov/cadastral/countyplats/teton/fieldnotes/t43nr116w_c288fn.pdf

TOWNSHIP 43 NORTH, RANGE 116 WEST, OF THE SIXTH PRINCIPAL MERIDIAN, WYOMING

DEPENDENT RESURVEY AND SURVEY

A history of surveys is contained in the field notes.

This plat represents the dependent resurvey of a portion of the subdivisional lines, designed to restore the corners in their true original locations according to the best available evidence, with the subdivision of section 33 of T. 43 N., R. 116 W., Sixth Principal Meridian, Wyoming.

The lottings and areas are as shown on the plat approved March 8, 1917.

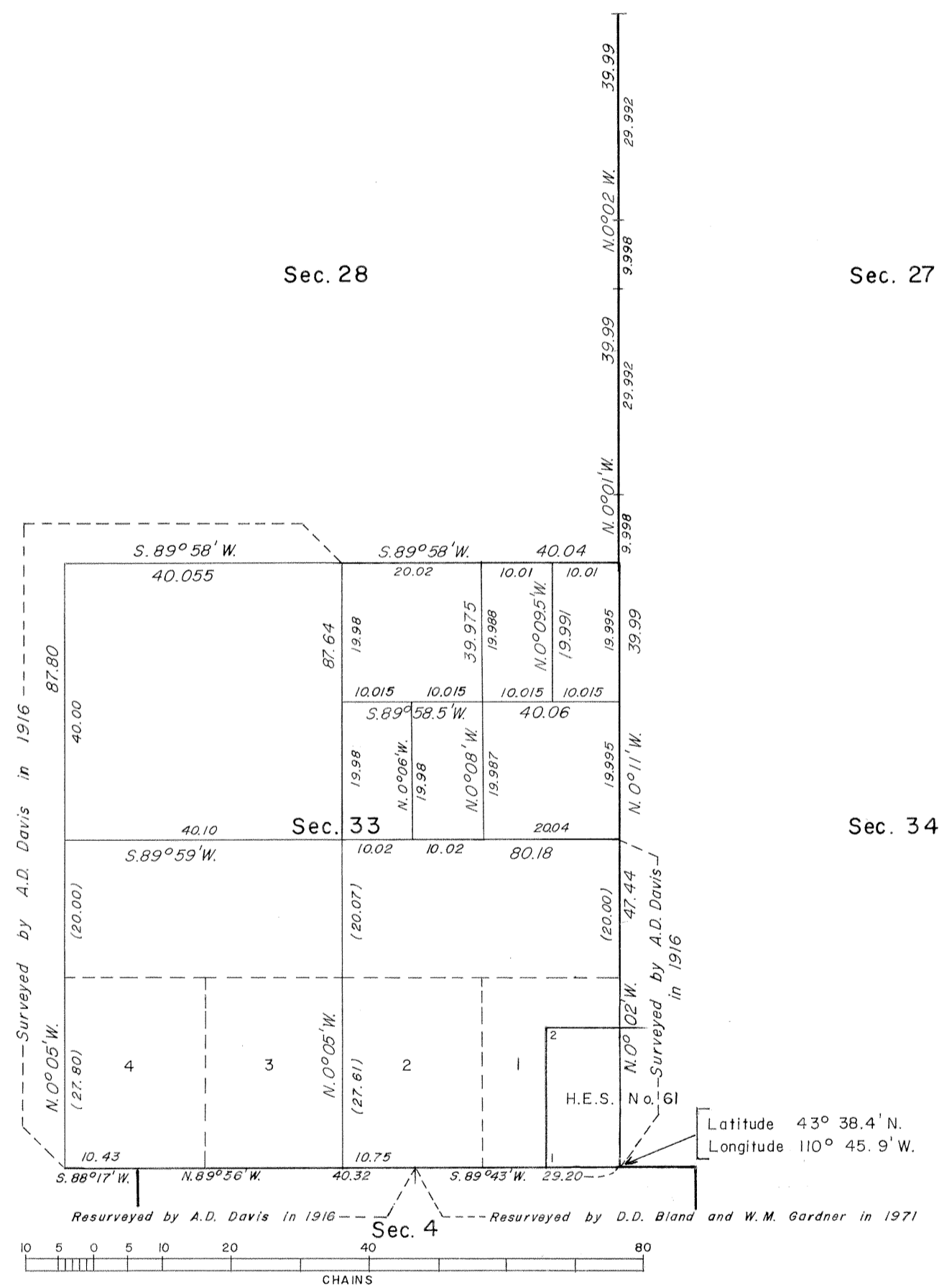
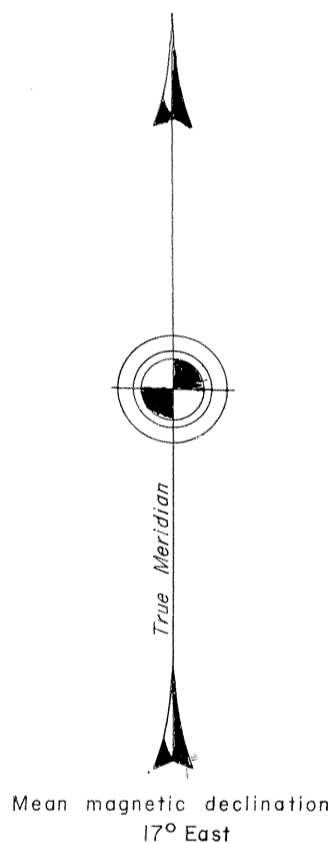
Survey executed by Leonard W. Murphy, Supervisory Cadastral Surveyor, beginning August 14, and completed August 18, 1972, pursuant to Special Instructions dated May 6, 1966, and the Amended Special Instructions dated August 7, 1972, for Group No. 301-2, Wyoming.

UNITED STATES DEPARTMENT OF THE INTERIOR
BUREAU OF LAND MANAGEMENT
Washington, D.C. September 13, 1977

This plat is strictly conformable to the approved field notes, and the survey, having been correctly executed in accordance with the requirements of law and the regulations of this Bureau, is hereby accepted.

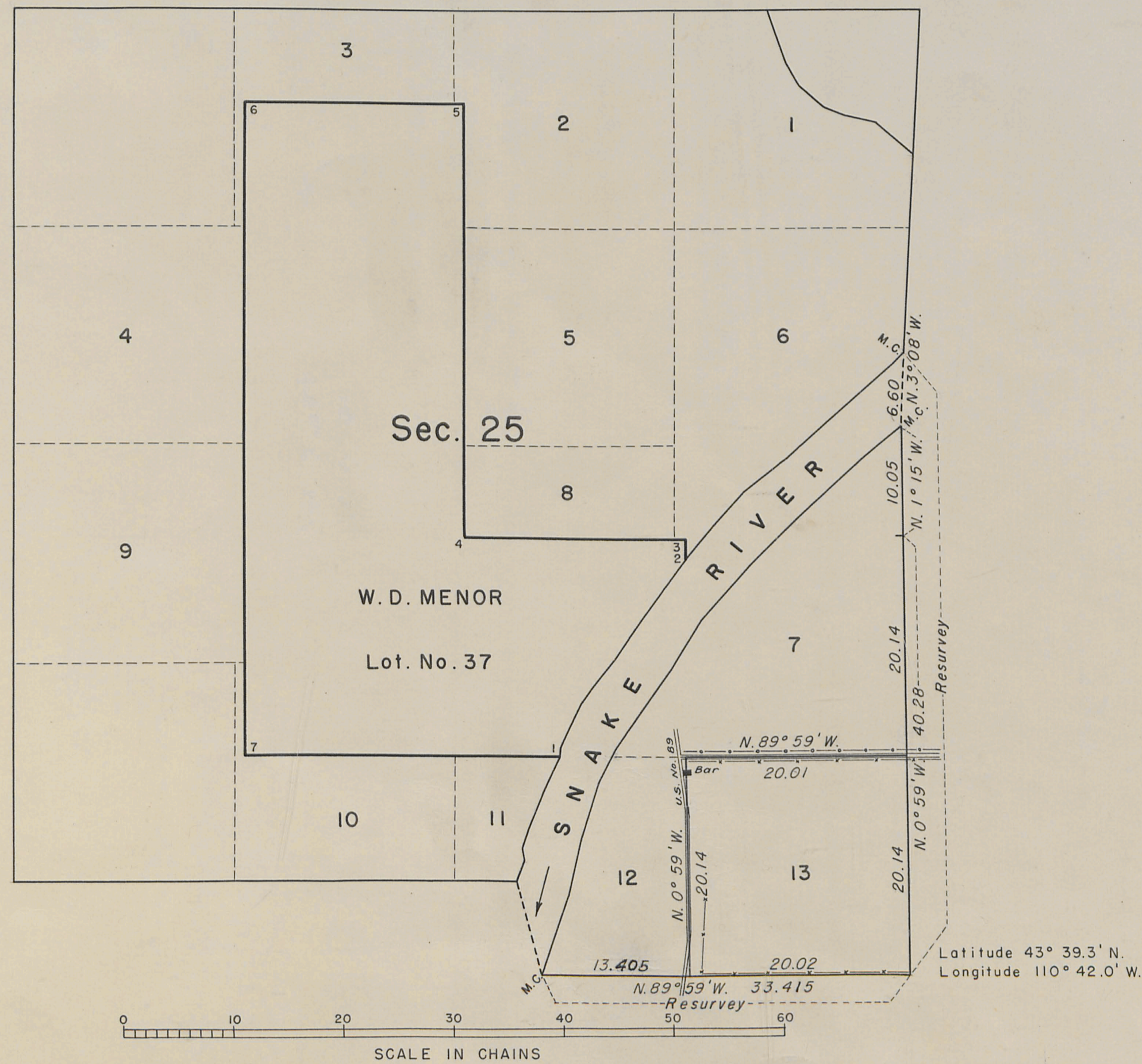
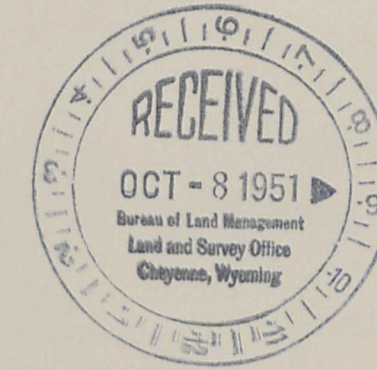
For the Director

Bernard W. Fisher
Chief, Division of Cadastral Survey



TOWNSHIP N° 43 NORTH, RANGE N° 116 WEST, OF THE SIXTH PRINCIPAL MERIDIAN, WYOMING.

SUBDIVISION OF A PORTION OF SECTION 25



This plat of sec. 25, T. 43 N., R. 116 W., 6th P.M. Wyoming, represents a retracement and reestablishment of a portion of the east and south boundaries and partial subdivision of the section. It is designed to restore the corners in their original positions according to the best available evidence and establish a surveyed boundary between lots 12 and 13 and between lots 7 and 13. The lottings and areas are as shown on the plat approved March 8, 1917.

J.G.H.
Ex. J.G.H.

Survey executed by William R. Bandy
June 21 to 22, 1951 under Special In-
structions for Group 225 Wyoming dated
May 31, 1951.

UNITED STATES DEPARTMENT OF THE INTERIOR
BUREAU OF LAND MANAGEMENT
Washington, D. C., August 9, 1951

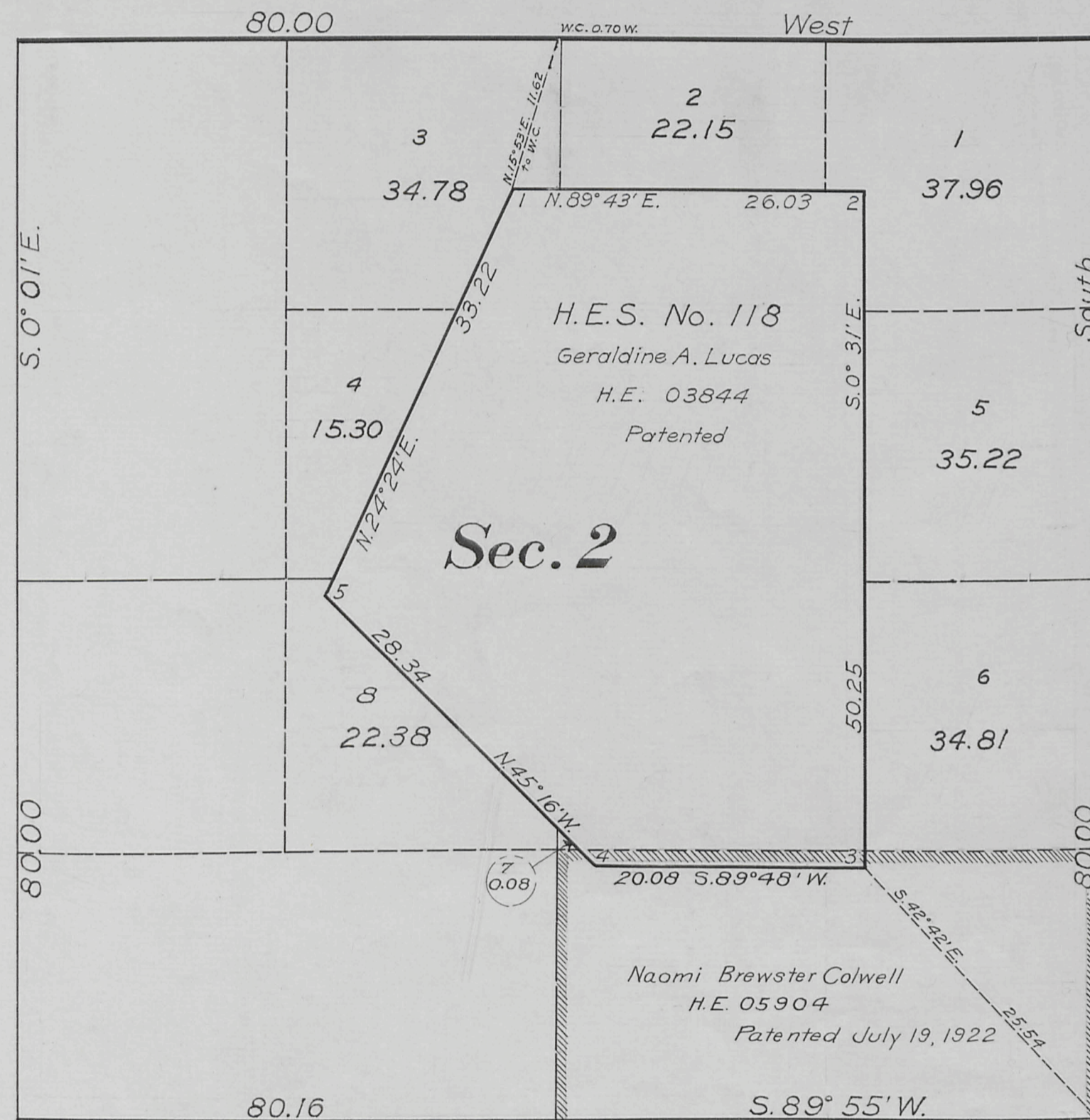
This plat is strictly conformable to the approved field notes, and the survey, having been correctly executed in accordance with the requirements of law and the regulations of this Bureau, is hereby accepted.

For the Director
William F. Richards
Chief, Branch of Surveys

Supplemental Plat No. 2

Township No. 43 North, Range No. 116 West of the Sixth Principal Meridian, Wyoming

Scale 10 Chains to an Inch



This Supplemental Plat of Township No. 43 North, Range No. 116 West of the Sixth Principal Meridian, Wyoming, plat approved March 8, 1917, is prepared in compliance with instructions from the Commissioner of the General Land Office, contained in letter "E" 010112 Evanston, dated November 13, 1924, in order to give proper designations and areas to public land made fractional by the segregation of H.E.S. No. 118 in section 2, and is hereby approved

U.S. Surveyor General's Office
Cheyenne, Wyoming, November 29, 1924

Clyde W. Arthur
Surveyor General

Area of conflict of H.E.S. No 118 with H.E. 05904 2.65 Acres

A.M.T.

Chkd by A.L.R.

2879-C

Trans to Evanston L.O.
Jan. 19, 1925

43 - 116

Supplemental Plat No 1
Township No 43 North Range No 116 West of the Sixth Principal Meridian, Wyoming

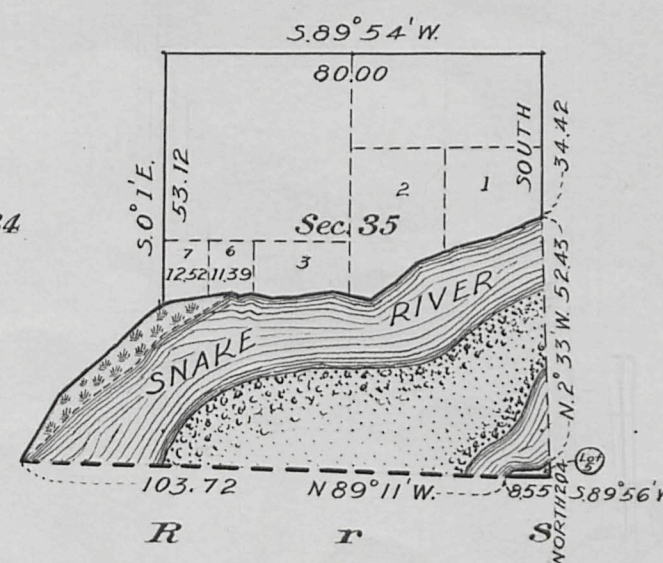
Plat accepted Dec 11, 1919

	g	Sec. 6	Sec. 5	Sec. 4	Sec. 3	Sec. 2	Sec. 1	y
H								Y
h	Sec. 7	Sec. 8	Sec. 9	Sec. 10	Sec. 11	Sec. 12		x
I								X
i	Sec. 18	Sec. 17	Sec. 16	Sec. 15	Sec. 14	Sec. 13		w
K								W
k	Sec. 19	Sec. 20	Sec. 21	Sec. 22	Sec. 23	Sec. 24		v
L								V
l	Sec. 30	Sec. 29	Sec. 28	Sec. 27	Sec. 26	Sec. 25		u
M								U
m	Sec. 31	Sec. 32	Sec. 33	Sec. 34	Sec. 35	Sec. 36		t
N								T

This Supplemental Plat of T. 43 N., R. 116 W., survey and plat approved March 8, 1917, is prepared in accordance with directions given in Commissioner's letter "E" dated November 15, 1919, for the purpose of dividing Lot 4 of Sec. 35, into its technical east and west halves in order to accommodate H.E. Ewanston 04099, and is hereby approved.

U.S. Surveyor General's Office,
Cheyenne, Wyoming, November 29, 1919.

Charles Decker
Surveyor General.



Areas in Acres.	
Public Land	
Indian Reservation	
Indian Allotments	
Mineral Claims	
Water Surface	
Total Area	

Scale 40 Chains to an inch

Mean Magnetic Declination.

Surveys Designated.	By Whom Surveyed.	Contract		Amount of Surveys		When Surveyed.		
		No.	Date	Mts.	chs.	lls.	Begun.	Completed.

The above map of Township No. _____ Range No. _____ of the _____ Meridian _____ is strictly conformable to the field notes of the survey thereof on file in this office, which have been examined and approved.

U.S. Surveyor General's Office,

Surveyor General.

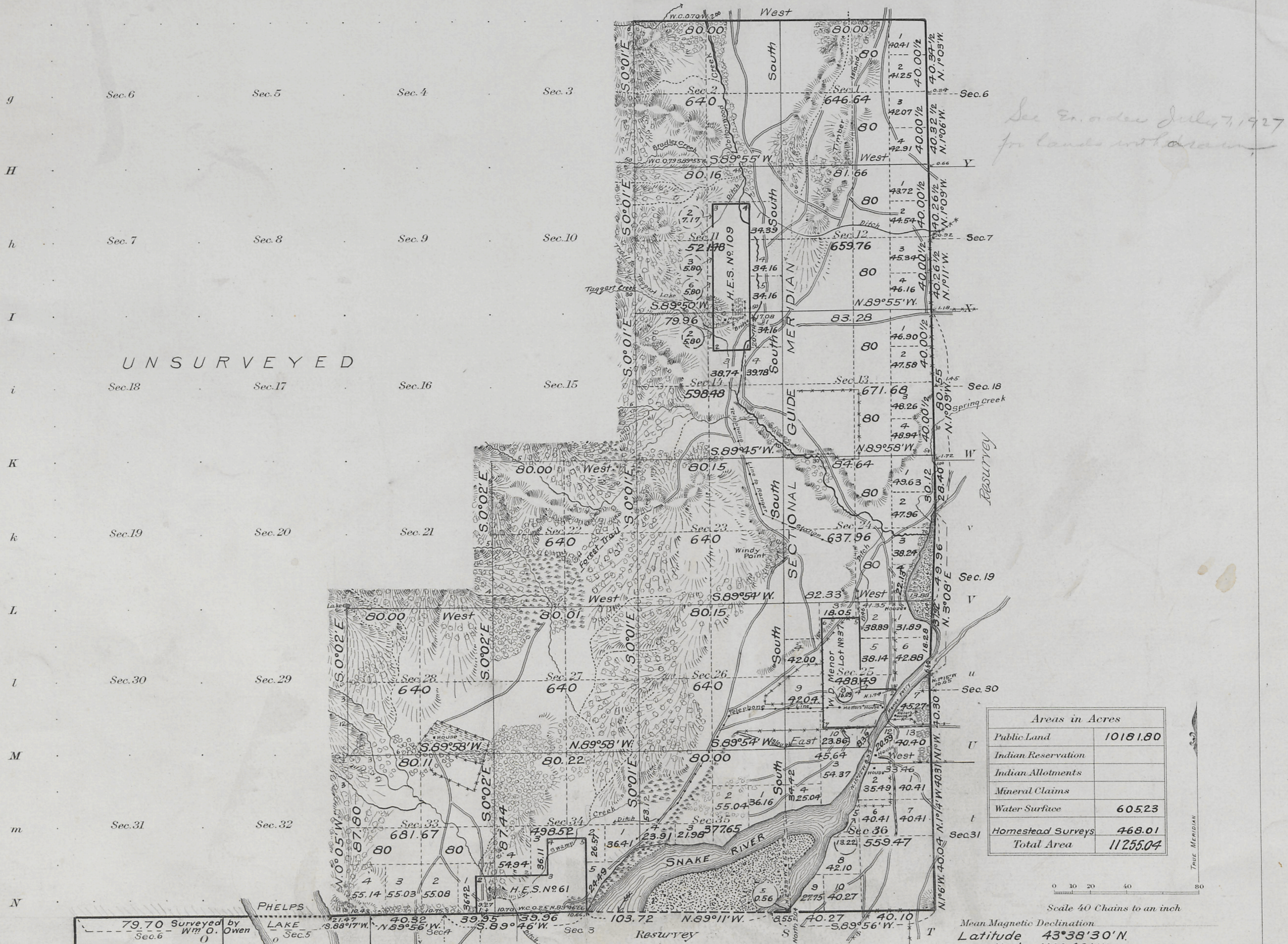
2879 B

Trans to Ewanston
Dec 15, 1919

43-116

Township N° 43 North, Range N° 116 West of the Sixth Principal Meridian, Wyoming

G F F e E d D e C b B a A



*See Enclosure July 7, 1927
for lands not drawn*

UNSURVEYED

Areas in Acres	
Public Land	10181.80
Indian Reservation	
Indian Allotments	
Mineral Claims	
Water Surface	605.23
Homestead Surveys	468.01
Total Area	11255.04

Scale 40 Chains to an inch

Mean Magnetic Declination
Latitude 43° 38' 30" N.
Longitude 110° 42' W

Surveys Designated	By Whom Surveyed	Group		Amount of Surveys			When Surveyed	
		No.	Date	Mls.	chs.	lks.	Began	Completed
Subdivisions	A. D. Davis	40	February 18, 1916	32	17	95	Sept. 14, 1916	Oct. 4, 1916
Connections	"	29	"	29	120		Sept. 16, 1916	Sept. 20, 1916
Meanders	"	6	"	6	14	44	Sept. 12, 1916	Sept. 29, 1916
North Township Line	"	2	"	2	00	00	Sept. 14, 1916	Sept. 18, 1916
East Township Line	"	6	"	6	08	73	Sept. 12, 1916	Sept. 14, 1916
South Township Line	"	4	"	4	14	34	Sept. 12, 1916	Oct. 3, 1916
South Township Line	Wm. O. Owen	250	Sept. 2, 1892	1	58	20	Oct. 9, 1892	Oct. 9, 1892

The above map of Township No. 43 North, Range No. 116 West of the Sixth Principal Meridian Wyoming is strictly conformable to the field notes of the survey thereof on file in this office, which have been examined and approved

U. S. Surveyor General's Office.
Cheyenne, Wyoming March 8, 1917
Charles L. Becker
Surveyor General.

2879-A

Trans. to Evanston
Nov. 13, 1917

43-116

T. 43 N., R. 116 W., Sixth Principal Meridian, Wyoming, Homestead Entry Survey Links

Plat Accession Number(s)	Year(s) of Survey	
		Homestead Entry Survey No. 61 (Sections 33 and 34)
5221	1913	https://www.wy.blm.gov/cadastral/homesteads/050-099/hes61.pdf
		Homestead Entry Survey No. 109 (Sections 11 and 14)
5266	1914	https://www.wy.blm.gov/cadastral/homesteads/100-149/hes109.pdf
		Homestead Entry Survey No. 118 (Section 2)
5274	1920	https://www.wy.blm.gov/cadastral/homesteads/100-149/hes118.pdf