

T. 44 N., R. 112 W., Sixth Principal Meridian, Wyoming, Field Note Links

Plat Accession Number(s)	Year(s) of Survey	Township Exterior Plats
4535	1892	https://www.wy.blm.gov/cadastral/countyplats/teton/fieldnotes/ext2632.pdf

Indep't

7535

Register filed Nov. 23-93

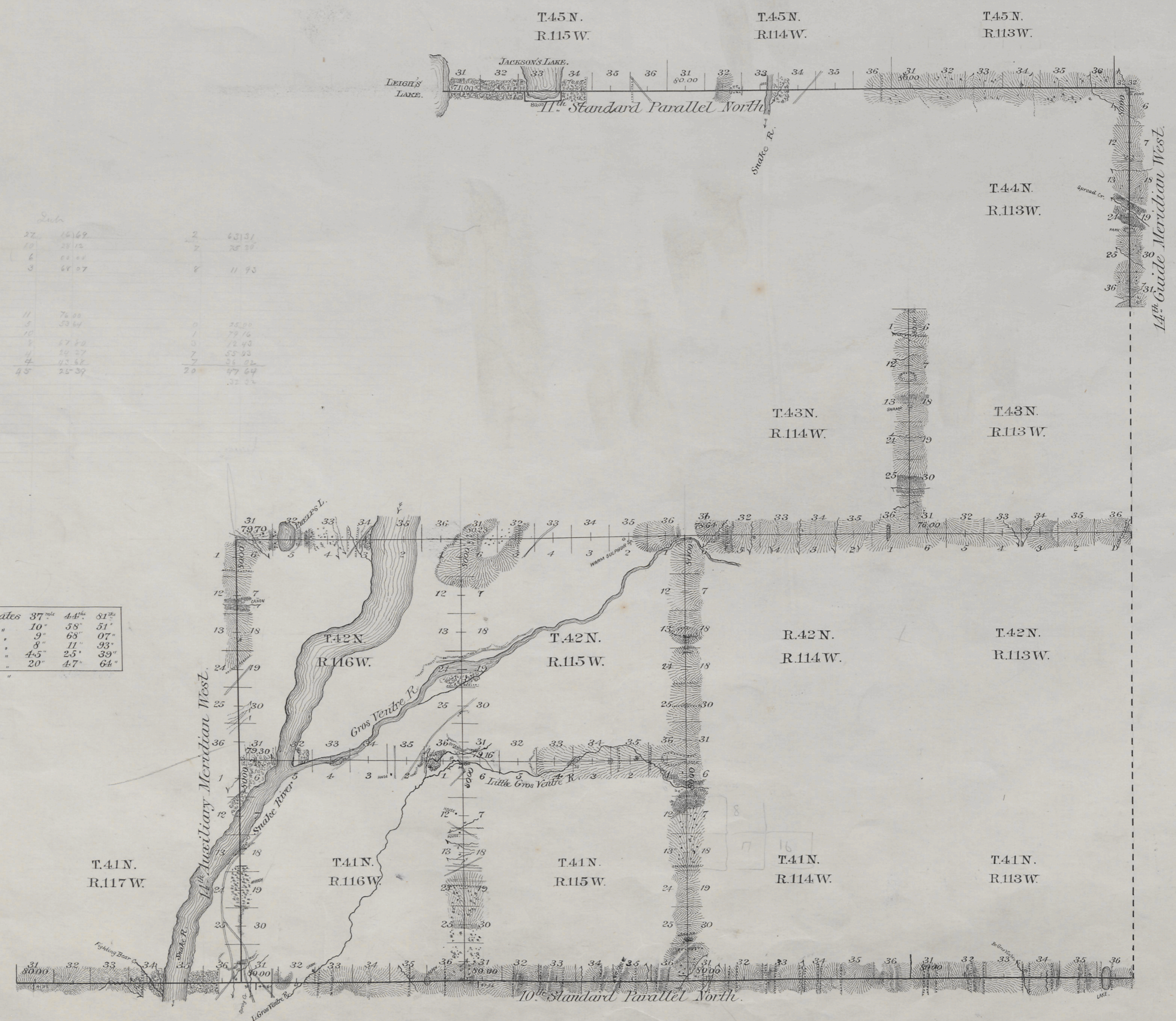
EXTERIOR LINES.

Scale 2 miles to 1 inch. Magnetic Variation East.

Sub

10 th Stand.	27	61.69	2	60.13
11 th Stand.	18	58.12	2	56.59
14 th Guide	6	61.44		
14 th Auxil.	3	61.27	8	11.93
41-42				
43-44				
45-46	11	74.22		
47-48	5	53.54	0	54.29
49-50	10		1	77.76
51-52	1	67.72	0	72.43
53-54	1	56.27	7	55.23
55-56	4	62.52	7	51.22
57-58	25	21.37	20	47.64
59-60				32.24

Standard lines at intermediate rates	37 ^{mi}	44 ^{mi}	51 ^{mi}	
" " " " " " " "	10"	58"	51"	
Meridian	intermediate	9"	63"	07"
" " " " " " " "	8"	11"	33"	
Township	intermediate	4.5"	2.5"	39"
" " " " " " " "	20"	4.7"	64"	



Surveys Designated	By Whom Surveyed	Date of Contract	Amount of Surveys Mls. Cts.	When Surveyed	Magnetic Declination
10 th Stand. Par. N.	Wm O. Owen	Sept 2, 1892	30 00 00	Sept 20-28, 1892	18° 28' East
11 th Stand. Par. N.			18 23 32	Oct 22-24	18° 15' 18" 24"
14 th Guide Mer. W.			6 00 00	Oct 20-21	18° 12' 18" 30"
14 th Auxil.			12 00 00	Oct 2-4	18° 12' "
Township Lines			65 73 03	Oct 6-18	18° 12' 18" 55"

I hereby certify that the above diagram of the Exterior lines of Townships 41 and 42 North, Ranges 115 and 116 West, Townships 43 North, Ranges 113 and 114 West, the 10th and 11th Standard Parallels North, the 14th Guide and the 14th Auxiliary Meridian, west of the 6th Principal Meridian, Wyoming, is strictly conformable to the field notes of survey thereat on file in this office, which have been examined and approved.

Surveyor General's Office,
Cheyenne, Wyo. June 30-1893

A. Richards
U.S. Surveyor General.