

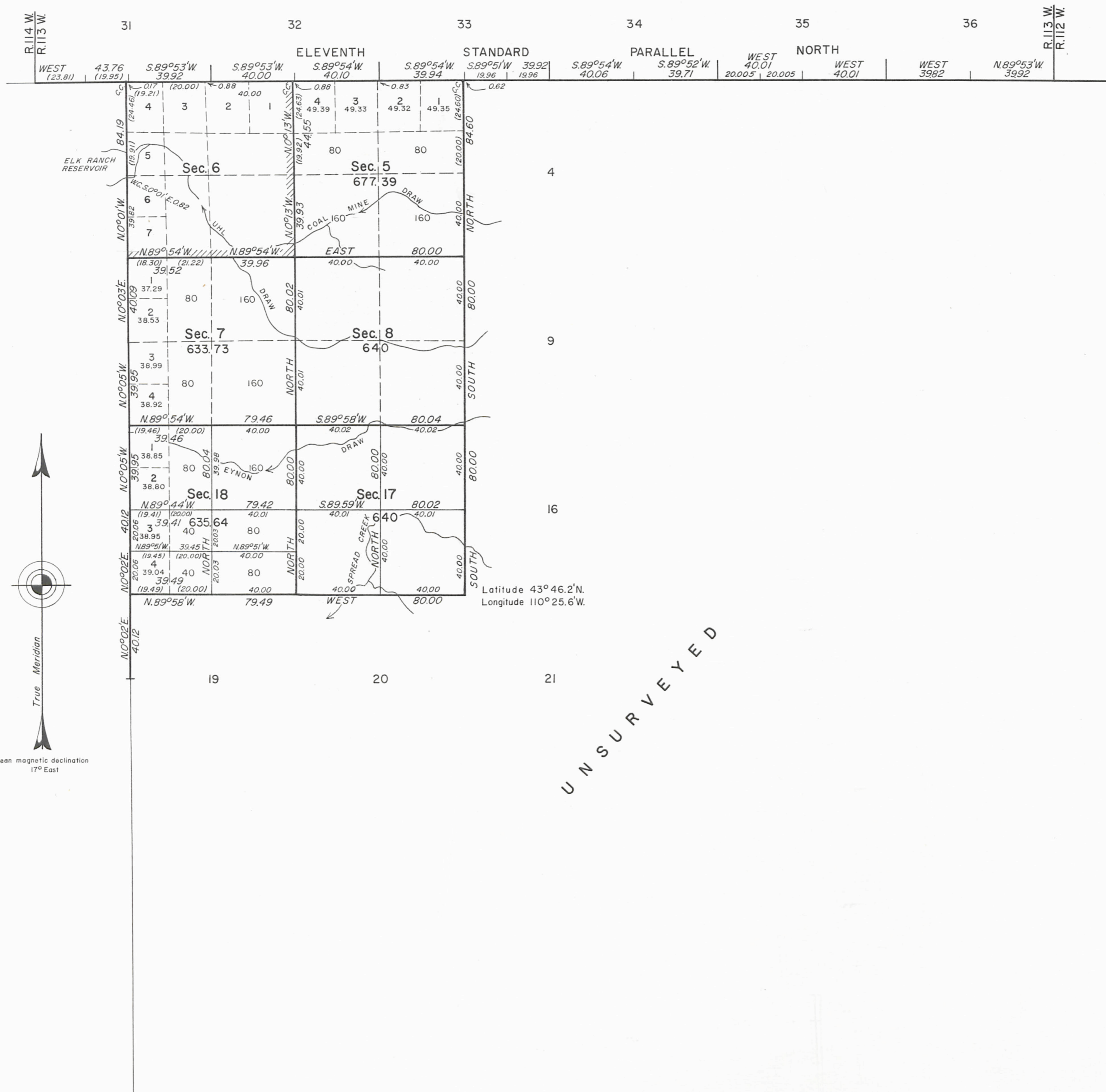
## T. 44 N., R. 113 W., Sixth Principal Meridian, Wyoming, Field Note Links

Plat Accession Number(s)	Year(s) of Survey	
		Township Subdivision Plats
7119	1968	<a href="https://www.wy.blm.gov/cadastral/countyplats/teton/fieldnotes/t44nr113w_gp301-2fn.pdf">https://www.wy.blm.gov/cadastral/countyplats/teton/fieldnotes/t44nr113w_gp301-2fn.pdf</a>
4824	1902	<a href="https://www.wy.blm.gov/cadastral/countyplats/teton/fieldnotes/t44nr113w_c289fn.pdf">https://www.wy.blm.gov/cadastral/countyplats/teton/fieldnotes/t44nr113w_c289fn.pdf</a>
		Township Exterior Plats
4535	1892	<a href="https://www.wy.blm.gov/cadastral/countyplats/teton/fieldnotes/ext2632.pdf">https://www.wy.blm.gov/cadastral/countyplats/teton/fieldnotes/ext2632.pdf</a>

7119

# TOWNSHIP 44 NORTH, RANGE 113 WEST OF THE SIXTH PRINCIPAL MERIDIAN, WYOMING

## DEPENDENT RESURVEY AND SURVEY



A history of previous surveys is contained in the field note record.

This plat represents a dependent resurvey of a portion of the subdivision lines, designed to restore the corners in their true original locations according to the best available evidence, and, the survey of a portion of the subdivisional lines and the subdivision of sections 17 and 18, T. 44 N., R. 113 W., Sixth Principal Meridian, Wyoming.

Except as indicated, the lottings and areas are as shown on the plat approved July 1, 1903.

These surveys were executed by Leonard W. Murphy, Cadastral Surveyor, beginning September 26, 1968, and completed October 9, 1968, pursuant to Special Instructions dated May 6, 1966, for Group No. 301-2, Wyoming.

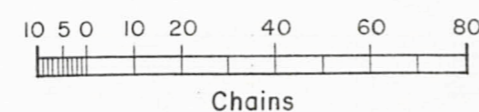
UNSURVEYED

UNITED STATES DEPARTMENT OF THE INTERIOR  
BUREAU OF LAND MANAGEMENT  
Washington, D. C. March 17, 1971

This plat is strictly conformable to the approved field notes, and the survey, having been correctly executed in accordance with the requirements of law and the regulations of this Bureau, is hereby accepted.

For the Director

Chief, Division of Cadastral Survey



Area resurveyed: 652.24 Acres  
Area surveyed: 3,226.76 Acres

C.M.H.

2883-A

44-112

D.A.C.





## T. 44 N., R. 113 W., Sixth Principal Meridian, Wyoming, Homestead Entry Survey Links

Plat Accession Number(s)	Year(s) of Survey	Homestead Entry Survey No. 207 (Sections 9 and 16)
5347	1917	<a href="https://www.wy.blm.gov/cadastral/homesteads/200-255/hes207.pdf">https://www.wy.blm.gov/cadastral/homesteads/200-255/hes207.pdf</a>