

## T. 44 N., R. 116 W., Sixth Principal Meridian, Wyoming, Field Note Links

Plat Accession Number(s)	Year(s) of Survey	Township Subdivision Plats
4930	1916	<a href="https://www.wy.blm.gov/cadastral/countyplats/teton/fieldnotes/t44nr116w_gp040fn.pdf">https://www.wy.blm.gov/cadastral/countyplats/teton/fieldnotes/t44nr116w_gp040fn.pdf</a>
4930	1916	<a href="https://www.wy.blm.gov/cadastral/countyplats/teton/fieldnotes/t44nr116w_gp040fn_bnd.pdf">https://www.wy.blm.gov/cadastral/countyplats/teton/fieldnotes/t44nr116w_gp040fn_bnd.pdf</a>



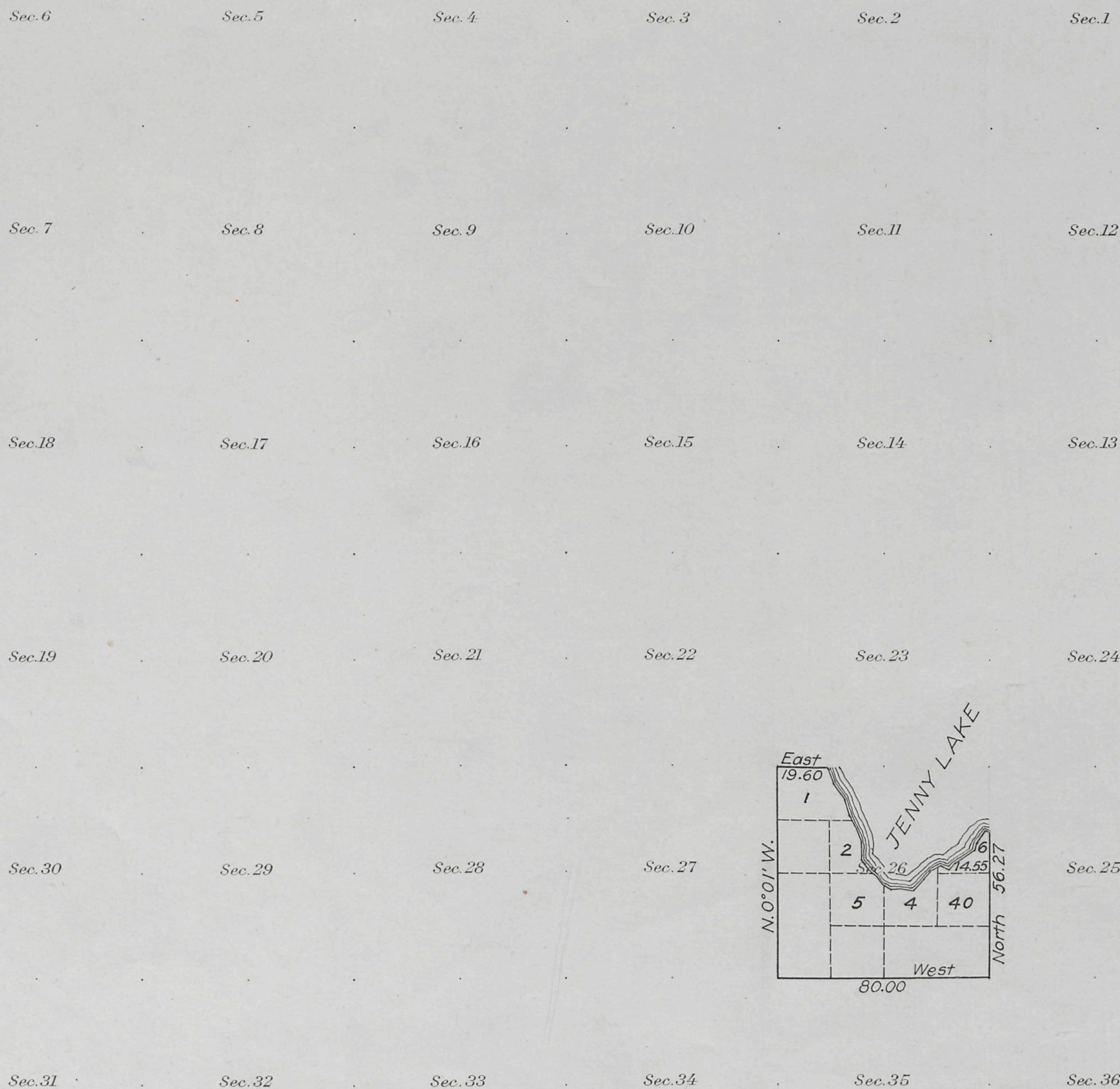
4931

(4-675 a)

Original

Supplemental Plat No. 1  
Township No. 44 North Range No. 116 West of the Sixth Principal Meridian, Wyoming

Survey accepted G.L.O  
19



This Supplemental Plat No. 1, Township No. 44 North, Range No. 116 West, of the Sixth Principal Meridian, Wyoming, plat approved March 8, 1917, is prepared in accordance with directions given in Commissioner's letter "E" dated November 11, 1922, to accommodate H.E. Evanston 04667; and is hereby approved.

Office of U. S. Surveyor General,  
Cheyenne, Wyoming, May 18, 1923.

*Clyde W. Atterly*  
Surveyor General.

Areas in Acres	
Public Land	
Indian Reservation	
Indian Allotments	
Mineral Claims	
Water Surface	
Total Area	

0 10 20 40 80

Scale 40 Chains to an inch  
Mean Magnetic Declination

Surveys Designated	By Whom Surveyed	Group		Amount of Surveys			When Surveyed	
		No.	Date	Mls.	chs.	fks.	Began	Completed

The above map of Township No. \_\_\_\_\_ Range No. \_\_\_\_\_ of the  
Meridian \_\_\_\_\_ is strictly conformable to the field notes of the survey thereof on file  
in this office, which have been examined and approved.

U. S. Surveyor General's Office.

Surveyor General.

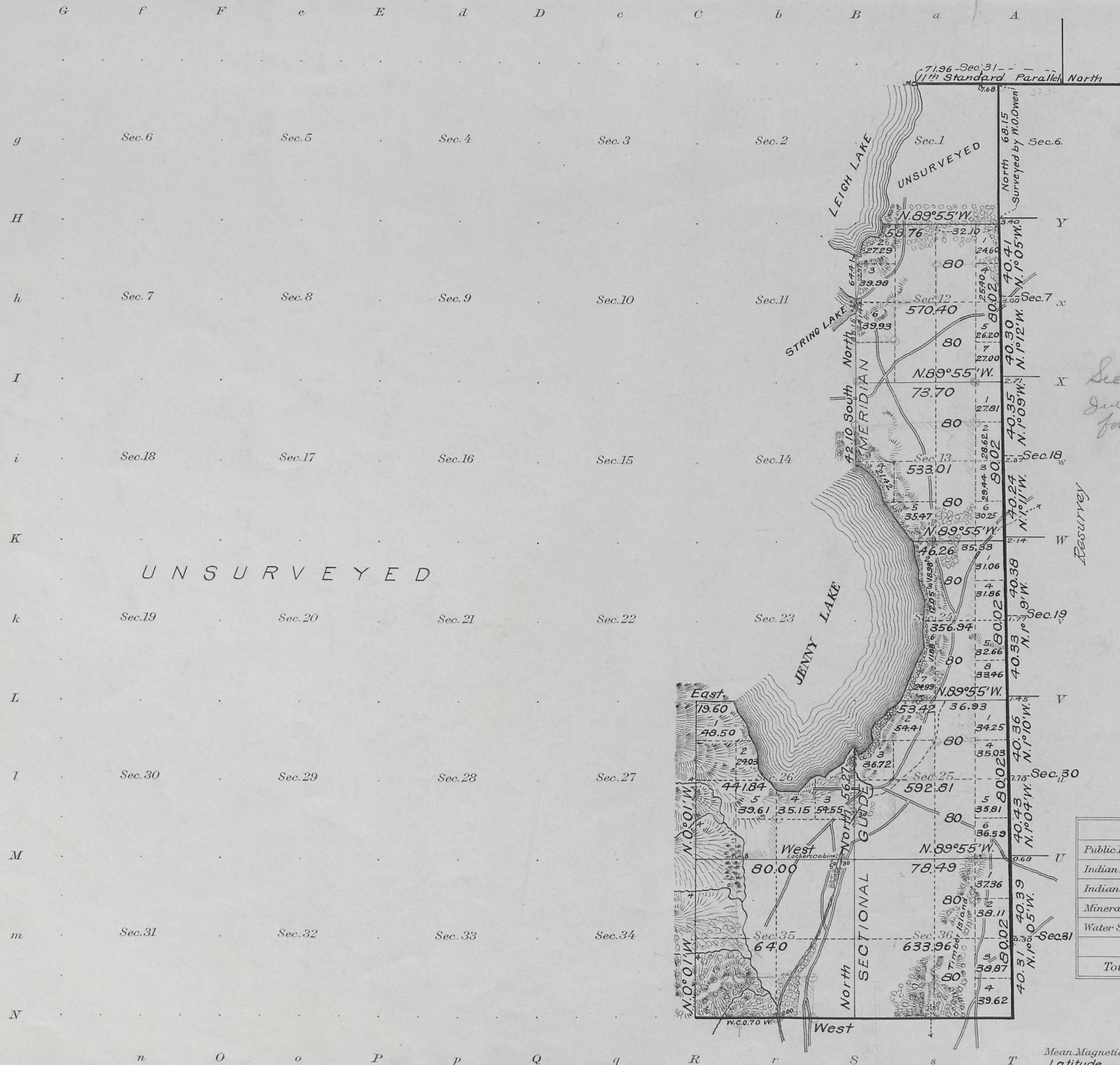
2968A

Trans to Evanston Co.  
Aug 28, 1923 44-116



# Township No. 44 North, Range No. 116 West of the Sixth Principal Meridian, Wyoming

Survey Accepted July 11, 1917  
G.L.O.



*See ex. order  
July 7, 1927  
for lands withdrawn*

Areas in Acres	
Public Land	3768.96
Indian Reservation	
Indian Allotments	
Mineral Claims	
Water Surface	
<b>Total Area</b>	

Scale 40 Chains to an inch

Mean Magnetic Declination  
Latitude 43° 44' N.  
Longitude 110° 42' W.

Surveys Designated	By Whom Surveyed	Group		Amount of Surveys		When Surveyed		
		No.	Date	Mls.	chs.	lks.	Begun	Completed
Subdivisions	A. D. Davis	40	February 18, 1916	10	13	01	Oct. 7, 1916	Oct. 13, 1916
Meanders	" " "	"	" " "	3	63	94	Oct. 13, 1916	Oct. 14, 1916
South Boundary	" " "	"	" " "	2	00	00	Sept. 17, 1916	Sept. 18, 1916
Resurvey East Bdy.	" " "	"	" " "	5	03	50	Oct. 6, 1916	Oct. 12, 1916
11th Standard Parallel	Blout and Artist	289	June 17, 1902	39	64		Sept. 24, 1902	Sept. 24, 1902
East Boundary	W. O. Owen	250	Sept. 2, 1892	68	15		June 15, 1893	June 15, 1893

The above map of Township No. 44 North Range No. 116 West of the Sixth Principal Meridian Wyoming is strictly conformable to the field notes of the survey thereof on file in this office, which have been examined and approved.

U. S. Surveyor General's Office.  
Cheyenne Wyoming March 8, 1917  
*Charles L. Seckler*  
Surveyor General.

*Trans. to Evanston  
Nov. 13, 1917*

2968

44-116