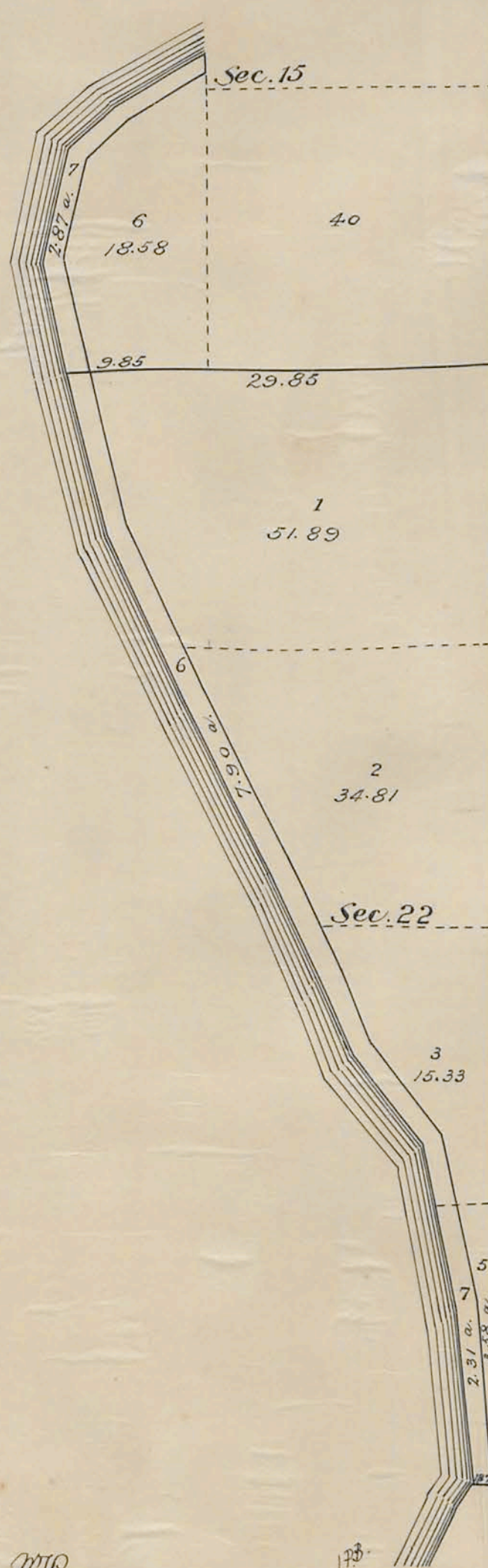


T. 46 N., R. 115 W., Sixth Principal Meridian, Wyoming, Field Note Links

Plat Accession Number(s)	Year(s) of Survey	
		Township Subdivision Plats
4830	1902	https://www.wy.blm.gov/cadastral/countyplats/teton/fieldnotes/t46nr115w_c289fn.pdf
		Township Exterior Plats
4587	1892-93	https://www.wy.blm.gov/cadastral/countyplats/teton/fieldnotes/ext2680.pdf
		Grand Teton National Park Boundary
7130	1969	https://www.wy.blm.gov/cadastral/countyplats/teton/fieldnotes/t46_47nr113-116w_gp330fn.pdf
		Yellowstone National Park Boundary
5963	1893	https://www.wy.blm.gov/cadastral/countyplats/fremont/fieldnotes/ynp_0013fn.pdf

PLAT
of
Parts of
Secs. 15 and 22
T. 46 N., R. 115 W.,
WYOMING.
Scale 10 Chains to an inch.

JACKSON LAKE



RECEIVED S. G. O.
AUG 6 1907
CHEYENNE, WYO.

RECEIVED S. G. O.
JUL 22 1907
CHEYENNE, WYO.

FJD
Department of the Interior,
General Land Office,
Washington, D.C., July 18, 1907.

I hereby certify that the above plat of the segregation of lot 7 from lot 6 Sec. 15, and lot 6, from lots 1, 2 and 3, Sec. 22, T. 46 N., R. 115 W., 6th RM., Wyoming, is strictly conformable to the field notes in this office as contained in papers relating to H.E. No. 1632. F.C. No. 1024. Evanston, Wyoming.

Fred Dennett
Acting Commissioner.

128345

46-115

THE SURVEY OF THE GRAND TETON NATIONAL PARK BOUNDARY

THE DEPENDENT RESURVEY AND THE SURVEY OF A PORTION OF THE TOWNSHIP EXTERIOR BOUNDARIES AND A PORTION OF THE SUBDIVISION LINES

within

TOWNSHIPS 46 NORTH, RANGES 113, 114, AND 115 WEST, TOWNSHIPS 47 NORTH, RANGES 115 AND 116 WEST OF THE SIXTH PRINCIPAL MERIDIAN, WYOMING

A history of previous surveys is contained in the field note record.

This plat represents a dependent resurvey of portions of the east boundary and subdivisional lines of T. 46 N., R. 115 W., designed to restore the corners in their true original locations according to the best available evidence; the survey of a portion of the subdivisional lines in the unsurveyed portion of T. 46 N., R. 115 W.; a metes and bounds survey in unsurveyed T. 46 N., R. 113 W.; the survey of a portion of the township exterior boundaries and a portion of the subdivisional lines within the unsurveyed T. 46 N., R. 114 W., and Tps. 47 N., Rs. 115 and 116 W., Sixth Principal Meridian, Wyoming.

These surveys were executed by Leonard W. Murphy, Cadastral Surveyor, beginning June 9, 1969, and completed August 8, 1969, pursuant to Special Instructions dated June 4, 1969, for Group No. 330, Wyoming.

UNITED STATES DEPARTMENT OF THE INTERIOR
BUREAU OF LAND MANAGEMENT
Washington, D. C. March 17, 1971

This plat is strictly conformable to the approved field notes, and the survey, having been correctly executed in accordance with the requirements of law and the regulations of this Bureau, is hereby accepted.

For the Director

Chief, Division of Cadastral Survey

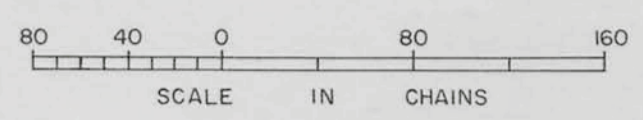
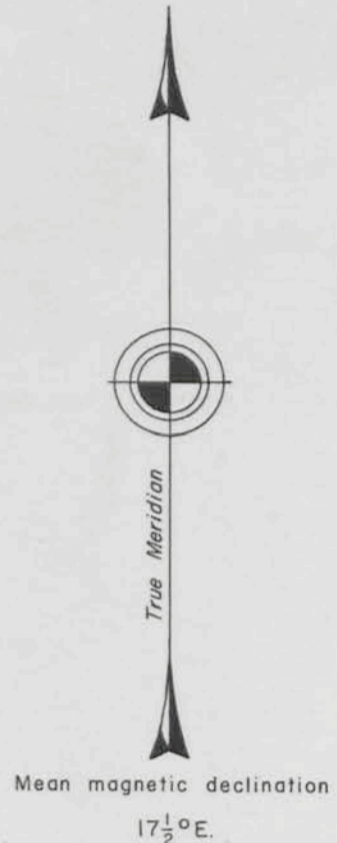
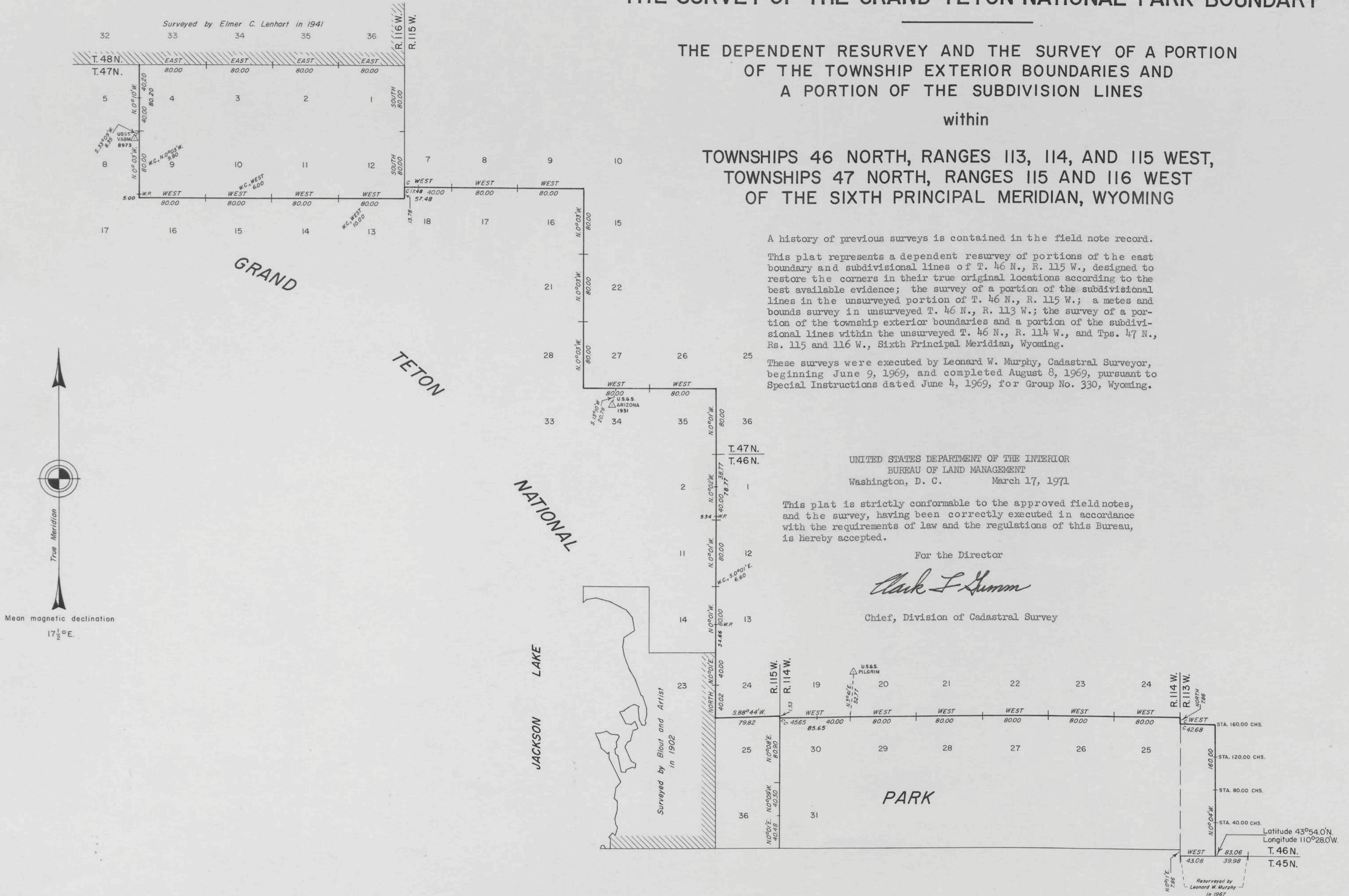


DIAGRAM
OF THE
N.E. & S. BOUNDARIES
OF THE
PUBLIC FOREST RESERVATION
AND THE
FRAC.E. BOUNDARY
OF THE
YELLOWSTONE NATIONAL PARK
IN
WYOMING

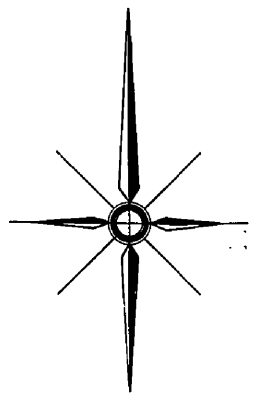
As surveyed by Philip M. Gallaher U.S. Deputy Surveyor Aug. 3rd to Oct. 22nd 1893, under his contract No. 263 dated Oct. 17, 1891.

Scale 1/2 in = 1 mile
 O indicates corners established
 + indicates proper points for corners but not established

I certify that the above diagram of the N.E. & S. Boundaries of the Public Forest Reservation and the Frac.E. Boundary of the Yellowstone National Park in Wyoming, is strictly conformable to the field notes of the survey thereof on file in this office which have been examined and approved.

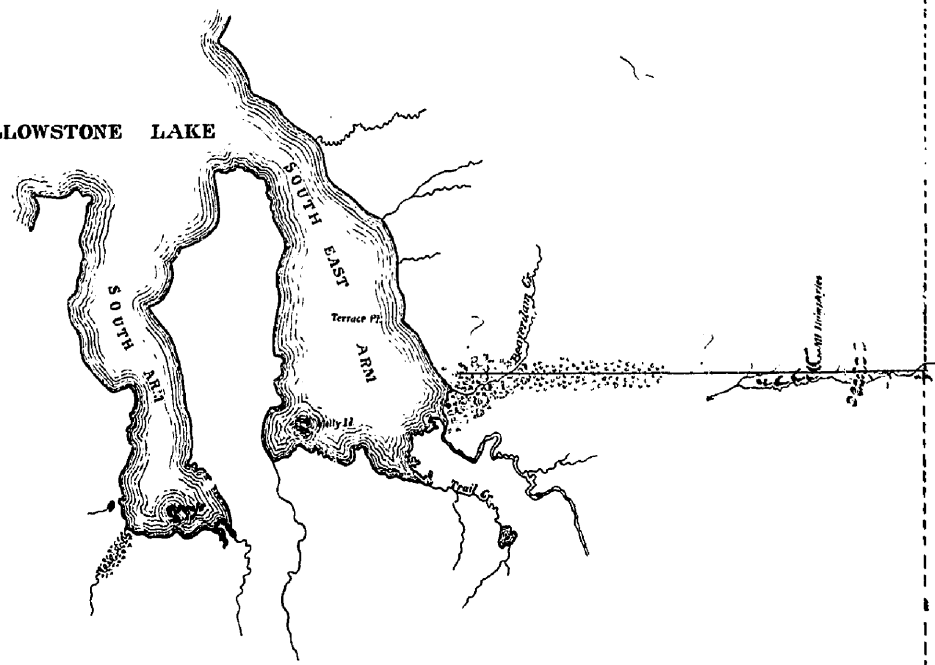
U.S. Sur. Gen's Office
 Helena Mont July 17, 1894.

Joseph H. Weil
 Sur. Gen.
 for Montana



YELLOWSTONE NATIONAL PARK

YELLOWSTONE LAKE



South Boundary Yellowstone National Park

PUBLIC

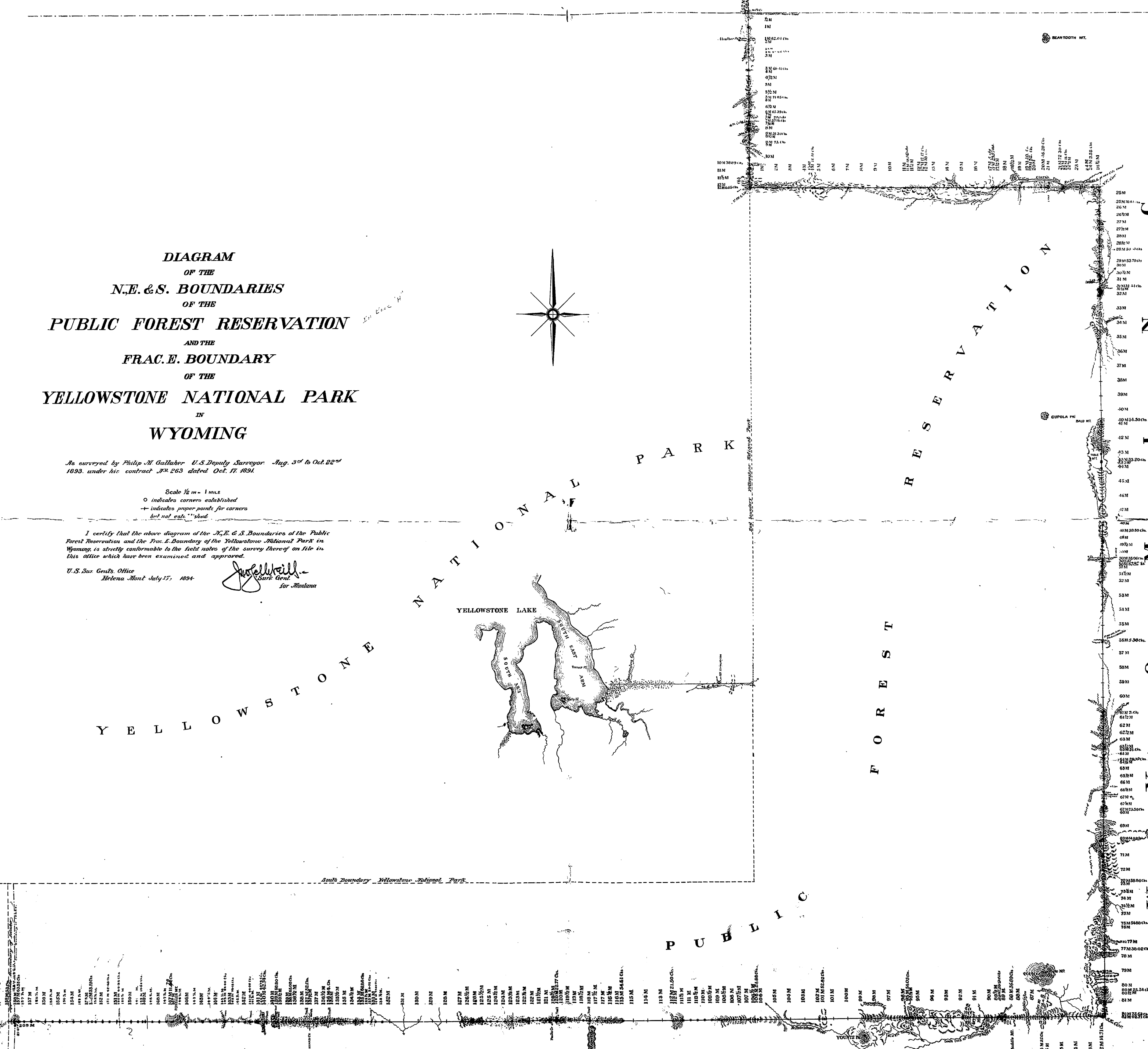
W Y O M I N G

RESERVATION

FOREST

Y I M O W

13 I D A H O



BEARTOOTH MT.

CUPOLA Pt. Bald Mt.

CANTON MT.

Snake Mt.

100 M

90 M

80 M

70 M

60 M

50 M

40 M

30 M

20 M

10 M

0 M

10 M

20 M

30 M

40 M

50 M

60 M

70 M

80 M

90 M

100 M

110 M

120 M

130 M

140 M

150 M

160 M

170 M

180 M

190 M

200 M

210 M

220 M

230 M

240 M

250 M

260 M

270 M

280 M

290 M

300 M

310 M

320 M

330 M

340 M

350 M

360 M

370 M

380 M

390 M

400 M

410 M

420 M

430 M

440 M

450 M

460 M

470 M

480 M

490 M

500 M

510 M

520 M

530 M

540 M

550 M

560 M

570 M

580 M

590 M

600 M

610 M

620 M

630 M

640 M

650 M

660 M

670 M

680 M

690 M

700 M

710 M

720 M

730 M

740 M

750 M

760 M

770 M

780 M

790 M

800 M

810 M

820 M

830 M

840 M

850 M

860 M

870 M

880 M

890 M

900 M

910 M

920 M

930 M

940 M

950 M

960 M

970 M

980 M

990 M

1000 M

1010 M

1020 M

1030 M

1040 M

1050 M

1060 M

1070 M

1080 M

1090 M

1100 M

1110 M

1120 M

1130 M

1140 M

1150 M

1160 M

1170 M

1180 M

1190 M

1200 M

1210 M

1220 M

1230 M

1240 M

1250 M

1260 M

1270 M

1280 M

1290 M

1300 M

1310 M

1320 M

1330 M

1340 M

1350 M

1360 M

1370 M

1380 M

1390 M

1400 M

1410 M

1420 M

1430 M

1440 M

1450 M

1460 M

1470 M

1480 M

1490 M

1500 M

1510 M

1520 M

1530 M

1540 M

1550 M

1560 M

1570 M

1580 M

1590 M

1600 M

1610 M

1620 M

1630 M

1640 M

1650 M

1660 M

1670 M

1680 M

1690 M

1700 M

1710 M

1720 M

1730 M

1740 M

1750 M

1760 M

1770 M

1780 M

1790 M

1800 M

1810 M

1820 M

1830 M

1840 M

1850 M

1860 M

1870 M

1880 M

1890 M

1900 M

1910 M

1920 M

1930 M

1940 M

1950 M

1960 M

1970 M

1980 M

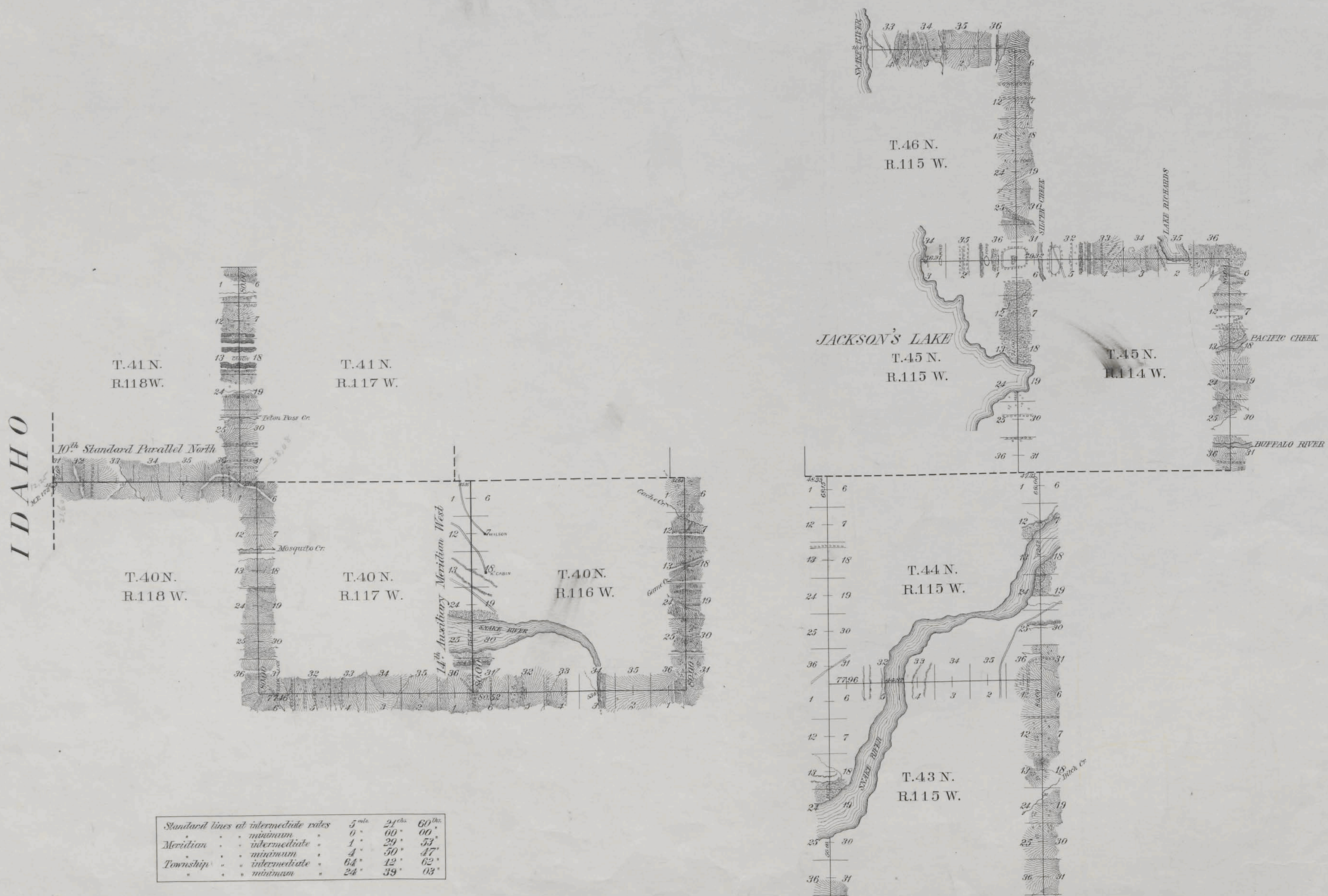
1990 M

2000 M

1587
32

EXTERIOR LINES.

Scale 2 miles to 1 inch. Magnetic Variation East.



Standard lines at intermediate rates	5 th mile	2 ^{1/2} mile	60 th mile
Meridian . . . minimum	0	00	00
Meridian . . . intermediate	1	29	53
Meridian . . . maximum	4	50	47
Township . . . intermediate	6.4	12	62
Township . . . minimum	24	39	03

Survey Designated	By Whom Surveyed	Date of Contract	Amount of Surveys Mile. Ch. Sec.	When Surveyed	Magnetic Declination
10 th Stand. Parl. N.	W ^m O. Owen	Sept. 2, 1892	5 21 60	Sept. 29-30, 1892	18° 28' East
14 th Guide Mer. W.	" " "	" " "	6 00 00	May 17, 1893	18° 06' "
Township Lines	" " "	" " "	88 14 65	May 18-July 17, 93	18° 00' 18" 24 "

Whereby certify that the above diagram of the Exterior lines of Townships 40 North, Range 116 West, Townships 43, 44 and 46 North, Range 115 West, Townships 40 and 41 North, Range 117 West, Township 45 North, Range 114 West the 10th Standard Parallel North, the 14th Auxiliary Meridian, west of the Principal Meridian, Wyoming, is strictly conformable to the field notes of survey thereof on file in this office, which have been examined and approved.

Surveyor General's Office
Cheyenne Wyo. Aug. 16, 1894.

Permy Bickford
U.S. Surveyor General.