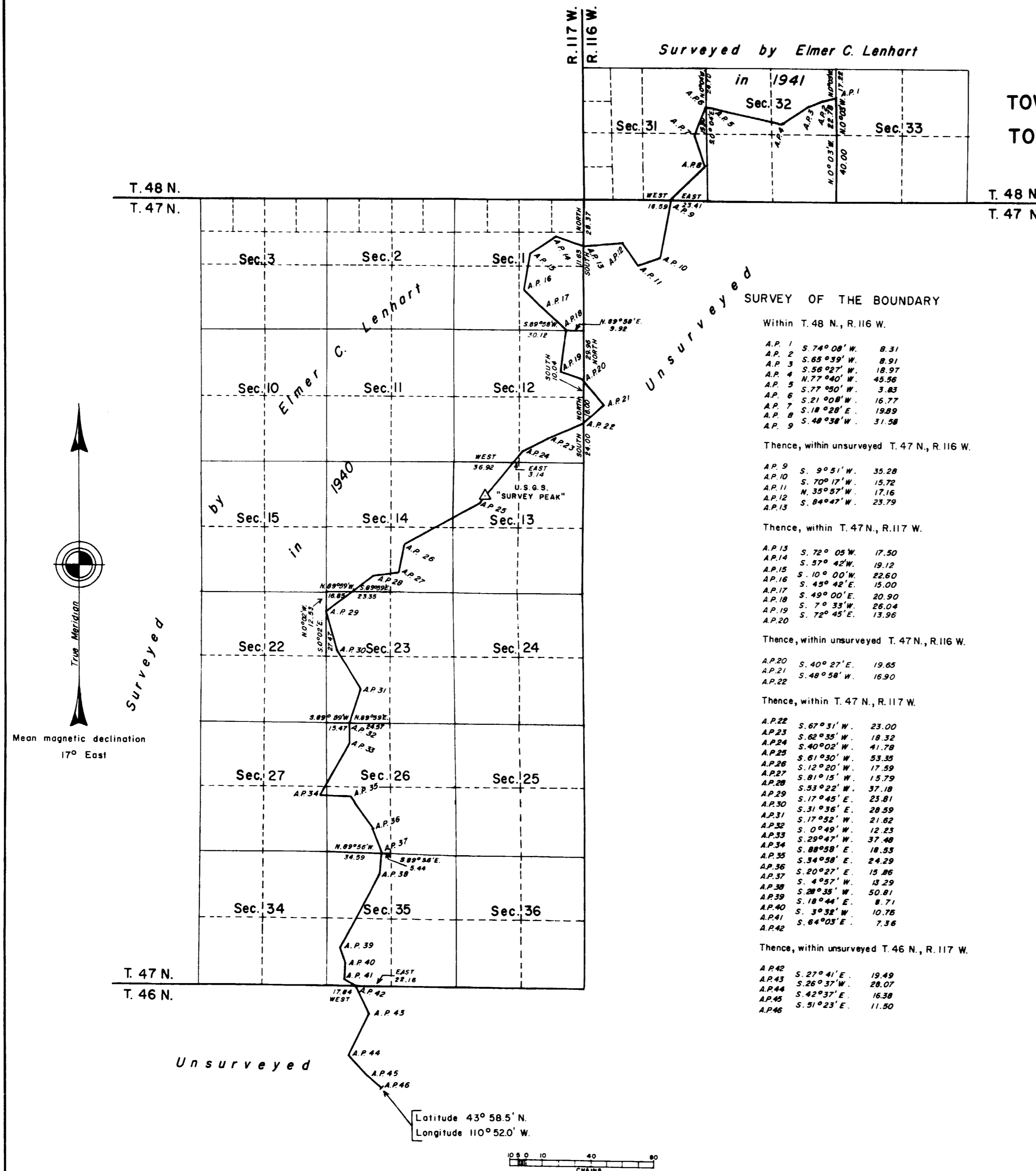


T. 46 N., R. 117 W., Sixth Principal Meridian, Wyoming, Field Note Links

Plat Accession Number(s)	Year(s) of Survey	
		Grand Teton National Park Boundary
7304	1972	https://www.wy.blm.gov/cadastral/countyplats/teton/fieldnotes/t48nr116w_gp348fn.pdf
		Yellowstone National Park Boundary
5963	1893	https://www.wy.blm.gov/cadastral/countyplats/fremont/fieldnotes/ynp_0013fn.pdf

THE SURVEY OF A PORTION OF THE WEST BOUNDARY
OF THE
GRAND TETON NATIONAL PARK
WITHIN
TOWNSHIPS 47 AND 48 NORTH, RANGE 116 WEST
TOWNSHIPS 46 AND 47 NORTH, RANGE 117 WEST
OF THE SIXTH PRINCIPAL MERIDIAN, WYOMING



SURVEY OF THE BOUNDARY

- Within T. 48 N., R. 116 W.
- A.P. 1 S. 74° 08' W. 8.31
 - A.P. 2 S. 68° 39' W. 8.91
 - A.P. 3 S. 56° 02' W. 18.97
 - A.P. 4 S. 77° 40' W. 45.56
 - A.P. 5 S. 77° 00' W. 3.83
 - A.P. 6 S. 21° 00' W. 16.77
 - A.P. 7 S. 18° 28' E. 19.89
 - A.P. 8 S. 48° 38' W. 31.58
- Thence, within unsurveyed T. 47 N., R. 116 W.
- A.P. 9 S. 90° 51' W. 35.28
 - A.P. 10 S. 70° 12' W. 15.72
 - A.P. 11 N. 35° 57' W. 17.16
 - A.P. 12 S. 84° 47' W. 23.79
- Thence, within T. 47 N., R. 117 W.
- A.P. 13 S. 72° 05' W. 17.50
 - A.P. 14 S. 57° 42' W. 19.12
 - A.P. 15 S. 10° 00' W. 22.60
 - A.P. 16 S. 45° 42' E. 15.00
 - A.P. 17 S. 49° 00' E. 20.90
 - A.P. 18 S. 7° 33' W. 26.04
 - A.P. 19 S. 72° 45' E. 13.96
- Thence, within unsurveyed T. 47 N., R. 116 W.
- A.P. 20 S. 40° 27' E. 19.65
 - A.P. 21 S. 48° 58' W. 16.90
- Thence, within T. 47 N., R. 117 W.
- A.P. 22 S. 67° 31' W. 23.00
 - A.P. 23 S. 62° 35' W. 18.32
 - A.P. 24 S. 40° 02' W. 41.78
 - A.P. 25 S. 61° 30' W. 53.35
 - A.P. 26 S. 12° 20' W. 17.59
 - A.P. 27 S. 81° 15' W. 13.79
 - A.P. 28 S. 33° 22' W. 37.18
 - A.P. 29 S. 17° 45' E. 25.81
 - A.P. 30 S. 31° 36' E. 28.59
 - A.P. 31 S. 17° 52' W. 21.62
 - A.P. 32 S. 0° 49' W. 12.23
 - A.P. 33 S. 29° 47' W. 37.48
 - A.P. 34 S. 88° 58' E. 18.53
 - A.P. 35 S. 34° 58' E. 24.29
 - A.P. 36 S. 20° 27' E. 15.86
 - A.P. 37 S. 4° 52' W. 13.29
 - A.P. 38 S. 28° 35' W. 50.81
 - A.P. 39 S. 18° 44' E. 8.71
 - A.P. 40 S. 3° 38' W. 10.76
 - A.P. 41 S. 64° 03' E. 7.36
 - A.P. 42
- Thence, within unsurveyed T. 46 N., R. 117 W.
- A.P. 42 S. 27° 41' E. 19.49
 - A.P. 43 S. 26° 37' W. 28.07
 - A.P. 44 S. 42° 37' E. 16.38
 - A.P. 45 S. 31° 23' E. 11.50
 - A.P. 46

A history of surveys is contained in the field notes.

This plat represents the dependent resurvey of a portion of the subdivisional lines, T. 48 N., R. 116 W., and the survey of a portion of the west boundary of the Grand Teton National Park.

The dependent resurvey and survey were executed by Leonard W. Murphy, Supervisory Cadastral Surveyor. The surveys commenced July 10, 1972, and completed August 11, 1972, under Special Instructions dated July 3, 1972, for Group No. 348, Wyoming.

UNITED STATES DEPARTMENT OF THE INTERIOR
BUREAU OF LAND MANAGEMENT
Washington, D.C. May 10, 1976

This plat is strictly conformable to the approved field notes, and the survey, having been correctly executed in accordance with the requirements of law and the regulations of this Bureau, is hereby accepted.

For the Director
Bernard W. Falge
Chief, Division of Cadastral Survey

DIAGRAM
OF THE
N.E. & S. BOUNDARIES
OF THE
PUBLIC FOREST RESERVATION
AND THE
FRAC.E. BOUNDARY
OF THE
YELLOWSTONE NATIONAL PARK
IN
WYOMING

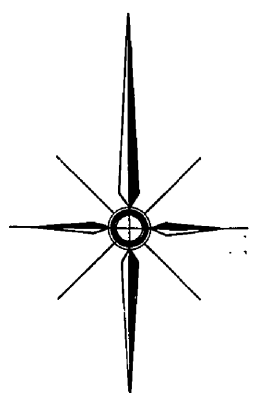
As surveyed by Philip M. Gallaher U.S. Deputy Surveyor Aug. 3rd to Oct. 22nd 1893, under his contract No. 263 dated Oct. 17, 1894.

Scale 1/2 in = 1 mile
 O indicates corners established
 + indicates proper points for corners but not established

I certify that the above diagram of the N.E. & S. Boundaries of the Public Forest Reservation and the Frac.E. Boundary of the Yellowstone National Park in Wyoming, is strictly conformable to the field notes of the survey thereof on file in this office which have been examined and approved.

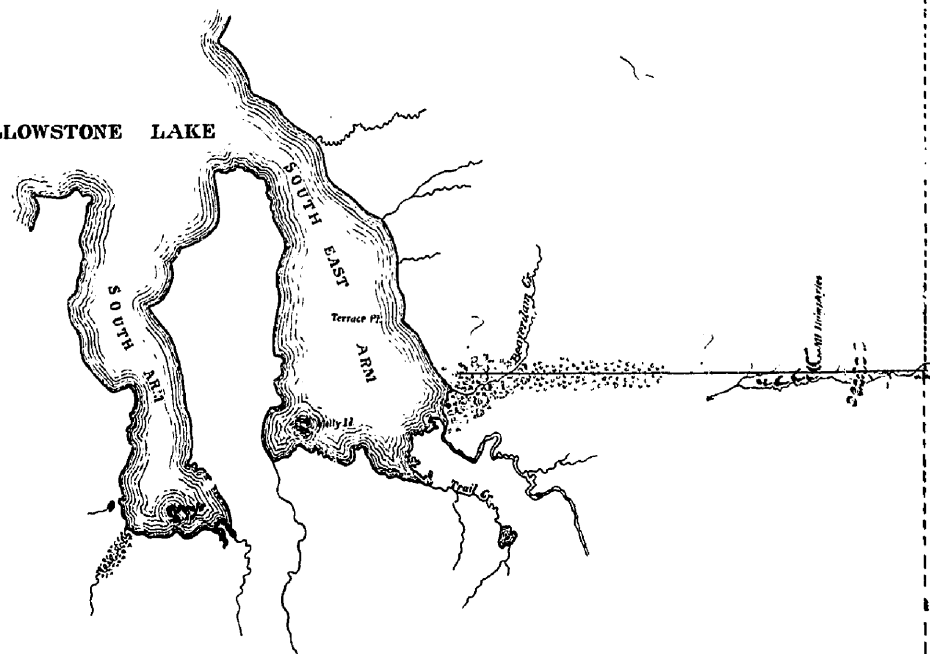
U.S. Surveyor's Office
 Helena Mont July 17, 1894.

Joseph H. Weil
 Surveyor General
 for Montana



YELLOWSTONE NATIONAL PARK

YELLOWSTONE LAKE



South Boundary Yellowstone National Park

PUBLIC

W Y O M I N G

RESERVATION

FOREST

25M
26M
27M
28M
29M
30M
31M
32M
33M
34M
35M
36M
37M
38M
39M
40M
41M
42M
43M
44M
45M
46M
47M
48M
49M
50M
51M
52M
53M
54M
55M
56M
57M
58M
59M
60M
61M
62M
63M
64M
65M
66M
67M
68M
69M
70M
71M
72M
73M
74M
75M
76M
77M
78M
79M
80M
81M

13

I D A H O

W

