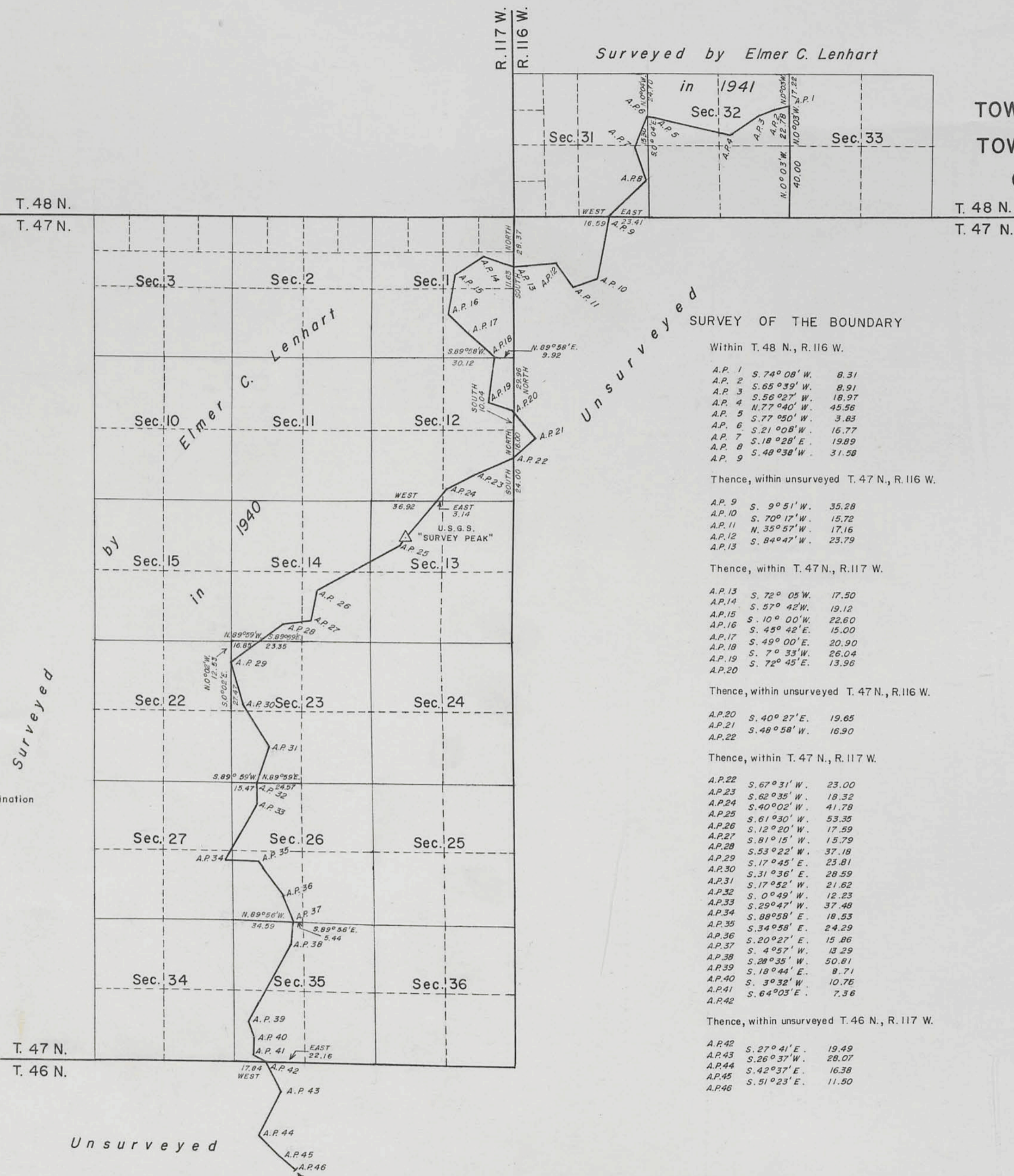


T. 47 N., R. 116 W., Sixth Principal Meridian, Wyoming, Field Note Links

Plat Accession Number(s)	Year(s) of Survey	
		Grand Teton National Park Boundary
7304	1972	https://www.wy.blm.gov/cadastral/countyplats/teton/fieldnotes/t48nr116w_gp348fn.pdf
7130	1969	https://www.wy.blm.gov/cadastral/countyplats/teton/fieldnotes/t46_47nr113-116w_gp330fn.pdf
		Yellowstone National Park Boundary
5963	1893	https://www.wy.blm.gov/cadastral/countyplats/fremont/fieldnotes/ynp_0013fn.pdf

THE SURVEY OF A PORTION OF THE WEST BOUNDARY
 OF THE
 GRAND TETON NATIONAL PARK
 WITHIN
 TOWNSHIPS 47 AND 48 NORTH, RANGE 116 WEST
 TOWNSHIPS 46 AND 47 NORTH, RANGE 117 WEST
 OF THE SIXTH PRINCIPAL MERIDIAN, WYOMING



SURVEY OF THE BOUNDARY

Within T. 48 N., R. 116 W.

- A.P. 1 S. 74° 08' W. 8.31
- A.P. 2 S. 65° 39' W. 8.91
- A.P. 3 S. 56° 27' W. 18.97
- A.P. 4 N. 77° 40' W. 45.56
- A.P. 5 S. 77° 05' W. 3.83
- A.P. 6 S. 21° 08' W. 16.77
- A.P. 7 S. 18° 28' E. 19.89
- A.P. 8 S. 48° 38' W. 31.58

Thence, within unsurveyed T. 47 N., R. 116 W.

- A.P. 9 S. 9° 51' W. 35.28
- A.P. 10 S. 70° 17' W. 15.72
- A.P. 11 N. 35° 57' W. 17.16
- A.P. 12 S. 84° 47' W. 23.79
- A.P. 13

Thence, within T. 47 N., R. 117 W.

- A.P. 13 S. 72° 05' W. 17.50
- A.P. 14 S. 57° 42' W. 19.12
- A.P. 15 S. 10° 00' W. 22.60
- A.P. 16 S. 49° 42' E. 15.00
- A.P. 17 S. 49° 00' E. 20.50
- A.P. 18 S. 7° 33' W. 26.04
- A.P. 19 S. 72° 45' E. 13.96
- A.P. 20

Thence, within unsurveyed T. 47 N., R. 116 W.

- A.P. 20 S. 40° 27' E. 19.65
- A.P. 22 S. 48° 58' W. 16.90

Thence, within T. 47 N., R. 117 W.

- A.P. 22 S. 67° 31' W. 23.00
- A.P. 23 S. 62° 35' W. 18.32
- A.P. 24 S. 40° 02' W. 41.78
- A.P. 25 S. 61° 30' W. 53.35
- A.P. 26 S. 12° 20' W. 17.59
- A.P. 27 S. 81° 15' W. 15.79
- A.P. 28 S. 53° 22' W. 37.18
- A.P. 29 S. 17° 42' E. 25.81
- A.P. 30 S. 31° 36' E. 28.59
- A.P. 31 S. 17° 52' W. 21.62
- A.P. 32 S. 0° 49' W. 12.23
- A.P. 33 S. 29° 47' W. 37.48
- A.P. 34 S. 88° 58' E. 18.53
- A.P. 35 S. 34° 58' E. 24.29
- A.P. 36 S. 20° 27' E. 15.86
- A.P. 37 S. 4° 57' W. 13.29
- A.P. 38 S. 29° 38' W. 50.81
- A.P. 39 S. 18° 44' E. 8.71
- A.P. 40 S. 3° 32' W. 10.76
- A.P. 41 S. 64° 03' E. 7.36
- A.P. 42

Thence, within unsurveyed T. 46 N., R. 117 W.

- A.P. 42 S. 27° 41' E. 19.49
- A.P. 43 S. 28° 37' W. 28.07
- A.P. 44 S. 42° 37' E. 16.38
- A.P. 45 S. 51° 23' E. 11.50
- A.P. 46

A history of surveys is contained in the field notes.

This plat represents the dependent resurvey of a portion of the subdivisional lines, T. 48 N., R. 116 W., and the survey of a portion of the west boundary of the Grand Teton National Park.

The dependent resurvey and survey were executed by Leonard W. Murphy, Supervisory Cadastral Surveyor. The surveys commenced July 10, 1972, and completed August 11, 1972, under Special Instructions dated July 3, 1972, for Group No. 348, Wyoming.

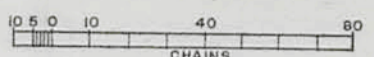
UNITED STATES DEPARTMENT OF THE INTERIOR
 BUREAU OF LAND MANAGEMENT
 Washington, D.C. May 10, 1976

This plat is strictly conformable to the approved field notes, and the survey, having been correctly executed in accordance with the requirements of law and the regulations of this Bureau, is hereby accepted.

For the Director

Bernard W. Falgout
 Chief, Division of Cadastral Survey

Latitude 43° 58.5' N.
 Longitude 110° 52.0' W.



THE SURVEY OF THE GRAND TETON NATIONAL PARK BOUNDARY

THE DEPENDENT RESURVEY AND THE SURVEY OF A PORTION OF THE TOWNSHIP EXTERIOR BOUNDARIES AND A PORTION OF THE SUBDIVISION LINES

within

TOWNSHIPS 46 NORTH, RANGES 113, 114, AND 115 WEST, TOWNSHIPS 47 NORTH, RANGES 115 AND 116 WEST OF THE SIXTH PRINCIPAL MERIDIAN, WYOMING

A history of previous surveys is contained in the field note record.

This plat represents a dependent resurvey of portions of the east boundary and subdivisional lines of T. 46 N., R. 115 W., designed to restore the corners in their true original locations according to the best available evidence; the survey of a portion of the subdivisional lines in the unsurveyed portion of T. 46 N., R. 115 W.; a metes and bounds survey in unsurveyed T. 46 N., R. 113 W.; the survey of a portion of the township exterior boundaries and a portion of the subdivisional lines within the unsurveyed T. 46 N., R. 114 W., and Tps. 47 N., Rs. 115 and 116 W., Sixth Principal Meridian, Wyoming.

These surveys were executed by Leonard W. Murphy, Cadastral Surveyor, beginning June 9, 1969, and completed August 8, 1969, pursuant to Special Instructions dated June 4, 1969, for Group No. 330, Wyoming.

UNITED STATES DEPARTMENT OF THE INTERIOR
BUREAU OF LAND MANAGEMENT
Washington, D. C. March 17, 1971

This plat is strictly conformable to the approved field notes, and the survey, having been correctly executed in accordance with the requirements of law and the regulations of this Bureau, is hereby accepted.

For the Director

Chief, Division of Cadastral Survey

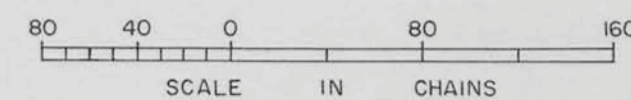
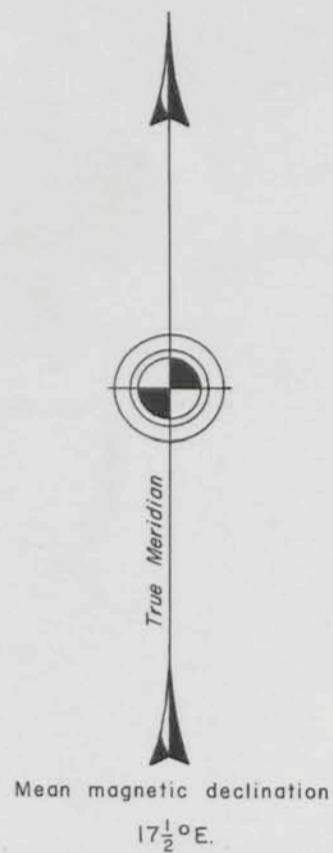
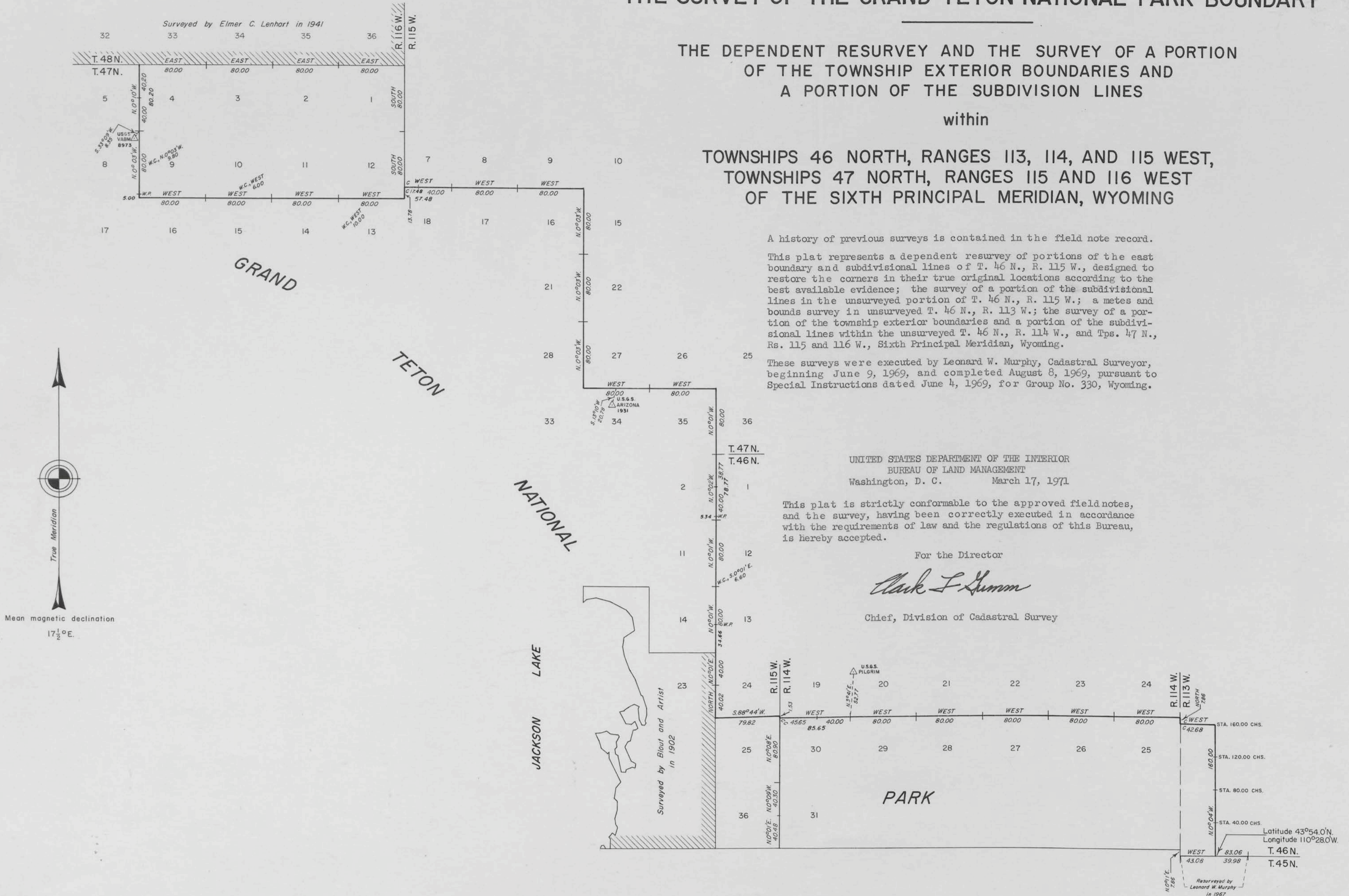


DIAGRAM
OF THE
N.E. & S. BOUNDARIES
OF THE
PUBLIC FOREST RESERVATION
AND THE
FRAC.E. BOUNDARY
OF THE
YELLOWSTONE NATIONAL PARK
IN
WYOMING

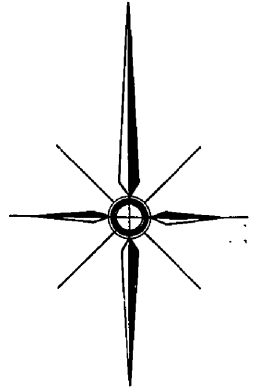
As surveyed by Philip M. Gallaher U.S. Deputy Surveyor Aug. 3rd to Oct. 22nd 1893, under his contract No. 263 dated Oct. 17, 1894.

Scale 1/2 in = 1 mile
 O indicates corners established
 + indicates proper points for corners but not established

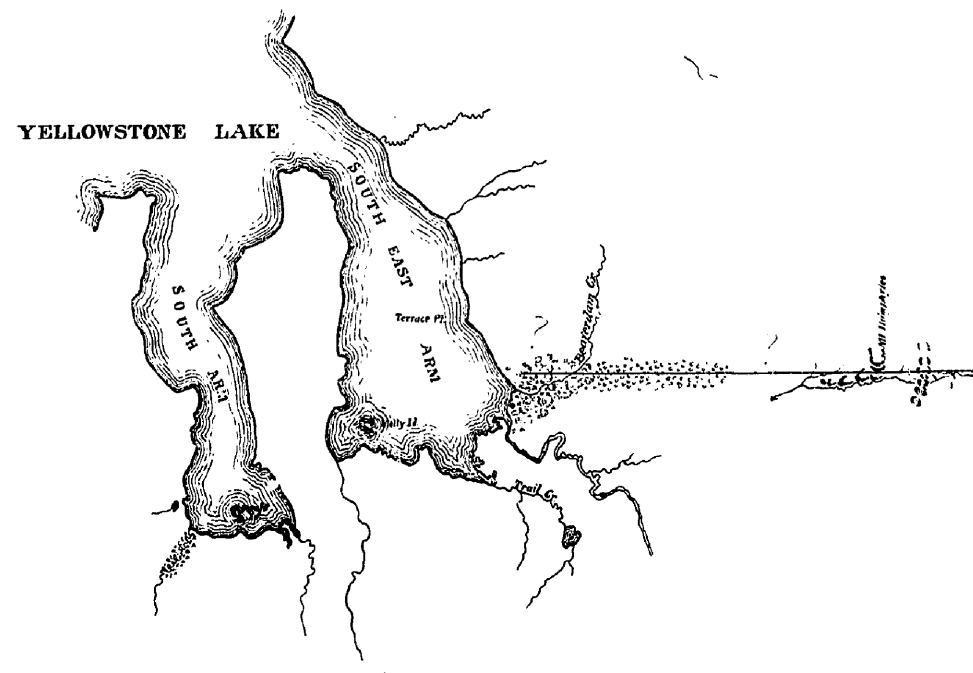
I certify that the above diagram of the N.E. & S. Boundaries of the Public Forest Reservation and the Frac.E. Boundary of the Yellowstone National Park in Wyoming, is strictly conformable to the field notes of the survey thereof on file in this office which have been examined and approved.

U.S. Sur. Gen's Office
 Helena Mont July 17, 1894.

Joseph H. Weil
 Sur. Gen.
 for Montana



YELLOWSTONE NATIONAL PARK



RESERVATION

PARK

FOREST

WYOMING

PUBLIC

W Y O M I N G

13
I D A H O

