

T. 17 N., R. 121 W., Sixth Principal Meridian, Wyoming, Field Note Links

Plat Accession Number(s)	Year(s) of Survey	
		Township Subdivision Plats
477	1909	https://www.wy.blm.gov/cadastral/countyplats/uinta/fieldnotes/t17nr121w_c338fn.pdf
476	1875	https://www.wy.blm.gov/cadastral/countyplats/uinta/fieldnotes/t17nr121w_c080fn.pdf
		Township Exterior Plats
1978	1909	https://www.wy.blm.gov/cadastral/countyplats/uinta/fieldnotes/ext1440.pdf
1978	1909	https://www.wy.blm.gov/cadastral/countyplats/uinta/fieldnotes/retext1440.pdf
466	1875	https://www.wy.blm.gov/cadastral/countyplats/uinta/fieldnotes/ext0466.pdf
465	1875	https://www.wy.blm.gov/cadastral/countyplats/uinta/fieldnotes/ext0465.pdf
463	1880; 1881; 1883; 1884	https://www.wy.blm.gov/cadastral/countyplats/sweetwater/fieldnotes/retext0403.pdf
463	1875	https://www.wy.blm.gov/cadastral/countyplats/sweetwater/fieldnotes/ext0463.pdf
		State Boundary
5995	1874	https://www.wy.blm.gov/cadastral/countyplats/lincoln/fieldnotes/wb_mp30-57.pdf
5994	1874	https://www.wy.blm.gov/cadastral/countyplats/uinta/fieldnotes/wb_mp1-29.pdf

41

18

477

(4-675a)

Resurvey Township N^o 17 North, Range N^o 121 West of the Sixth Principal Meridian, Wyoming:



Original Survey						
T	R	Sec	Subdivision	Entry Kind No	Status in Land Office	Entryman
17	121	1	All	LG	Patented	Union Pacific
"	"	13	All	LG	"	Union Pacific
"	"	25	All	LG	"	Union Pacific
"	"	36	All	S.S.	"	Wyoming.

Public Land	440.44
Indian Reservation	
Indian Allotments	
Mineral Claims	
Water Surface	
Patented Land	911.24
Total Area	1,351.68

Surveys Designated.	By Whom Surveyed.	Contract No.	Date	Amount of Surveys			When Surveyed.	
				Mls.	chs.	lks.	Began.	Completed.
Resurvey N.E. & S. Township Lines	Newell J. Burnham	338	June 8, 1909	6	51	19	July 13, 1909	Aug. 30, 1909
Resurvey Subdivision Lines	Newell J. Burnham	338	June 8, 1909	1	63	42	Aug. 3, 1909	Aug. 7, 1909
Connections	Newell J. Burnham	338	June 8, 1909	1	66	67	Aug. 3, 1909	Aug. 7, 1909
Retracement W. Boundary Wyoming	Newell J. Burnham	338	June 8, 1909	5	79	91	Aug. 4, 1909	Aug. 5, 1909
W. Boundary Wyoming	A.V. Richards	610	May 29, 1873	6	1	96	June 6, 1874	June 8, 1874

Resurvey
The above map of Township No. 17 North Range No 121 West of the Sixth Principal Meridian Wyoming is strictly conformable to the field notes of the survey thereof on file in this office, which have been examined and approved.

U.S. Surveyor General's Office,
Cheyenne, Wyoming, October 2, 1911.

Stephen P. Johnson
Surveyor General.

Accepted by the Hon. Commissioner in letter "E" May 11, 1912.
Duplicate plat mailed County Office May 17, 1912.

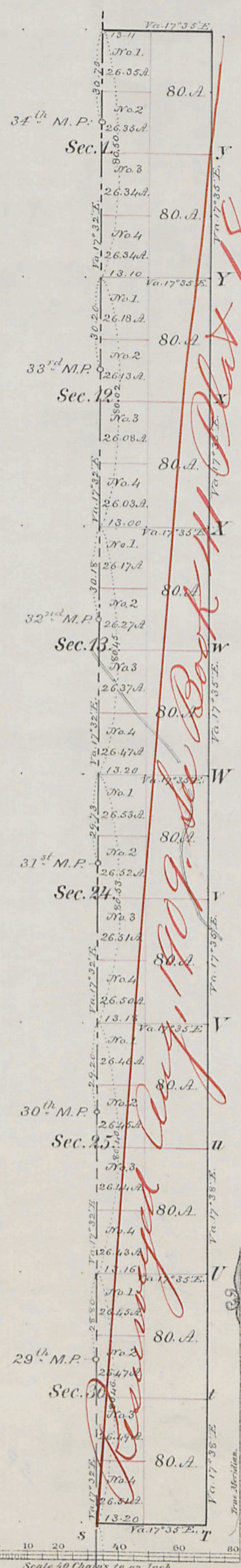
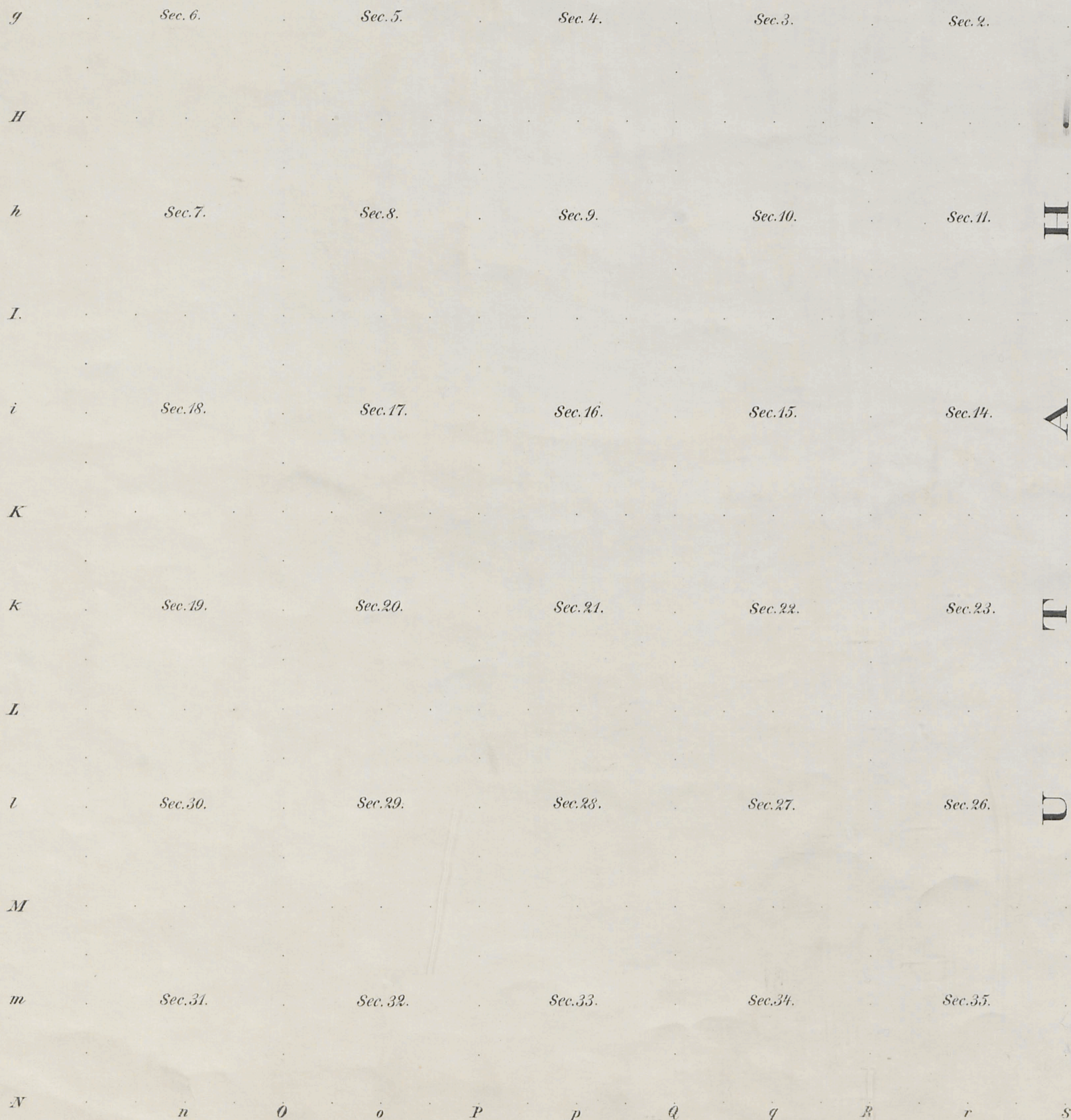
17-121

417A

476

TOWNSHIP N° 17 NORTH, RANGE N° 121 WEST OF THE SIXTH PRINCIPAL MERIDIAN

G f F e E d D c C b B a A.



Meanders of							
Posts	Courses	Ch. Lk.	Posts	Courses	Ch. Lk.	Posts	Courses

Surveys Designated	By Whom Surveyed	Date of Contract	Amount of Survey	When Surveyed
N. Township line	Medary & Grant	July 7 th 1875	30. 33. 11	July 21 st 1875
Subdivisions	Medary & Grant	July 7 th 1875	2. 5. 64	July 23 rd 1875
Connections			1. 68. 11	
E th Stand ^g Parallel N.	Medary & Grant	July 7 th 1875	33. 20	July 16 th 1875
15 th Guide Meridian W.	Medary & Grant	July 7 th 1875	6. 00. 00	July 16 th 1875
W Boundary Wyoming	A. Y. Richards	May 29 th 1873	6. 2. 36	June 8 th & 9 th 1874

The above Map of Township N° 17 North of Range N° 121 West of the Sixth Principal Meridian in Wyoming Territory is strictly conformable to the field notes of the survey thereof on file in this Office, which have been examined and approved

Surveyor General's Office, *Edw. C. David*
Ch. J. Lovell

Cheyenne Wyoming
 January 6th 1876.

Case 19-121

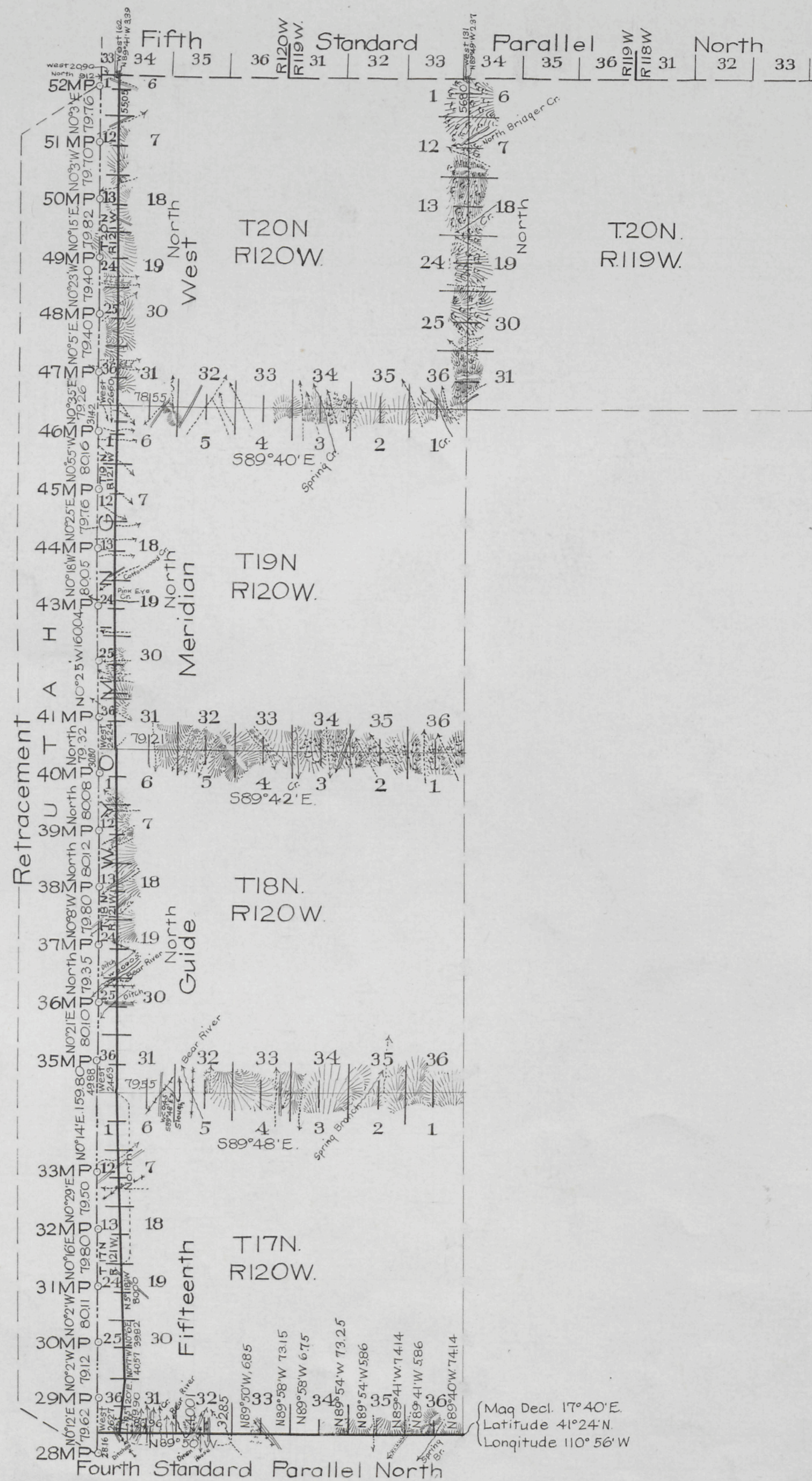
41
Indexed

12

1978

RESURVEY TOWNSHIP EXTERIORS

Scale: 160 Chains to 1 inch



This Plat
of the Resurvey
of the
Fourth Standard Parallel North through Ranges 120, and 121W,
Fifteenth Guide Meridian West through Townships 17, 18, 19
and 20 N, North Boundaries of Townships 17, 18 and 19 North,
Ranges 120 and 121 W, and West Boundary of T20N
R.119W. of the Sixth Principal Meridian, Wyoming, and
of the Retracement
of the
West Boundary of Wyoming from Mile Post 28 to Mile
Post 52 is strictly conformable to the field notes of
the resurvey thereof

by
Newell J. Burnham, U.S.D.S.
under his
Contract No 338,
dated June 8, 1909,
which have been examined, approved and filed in this
office.
U.S. Surveyor General's Office,
Cheyenne, Wyoming,
October 2, 1911.

Stephen P. Hancock
Surveyor General

Surveys Designated	Amount			When Surveyed
	Mls	Chs	Lks.	
Standard Lines Retraced	6	26	09	July 10-July 12, 1909
Standard Lines Resurveyed	30	01	43	July 13-Sept 15, 1909
Connecting Lines	1	68	95	July 13-Oct 5, 1909
State Line Retraced	23	74	07	Aug 4-Oct 4, 1909
Township Lines	24	49	58	July 15-Oct 5, 1909

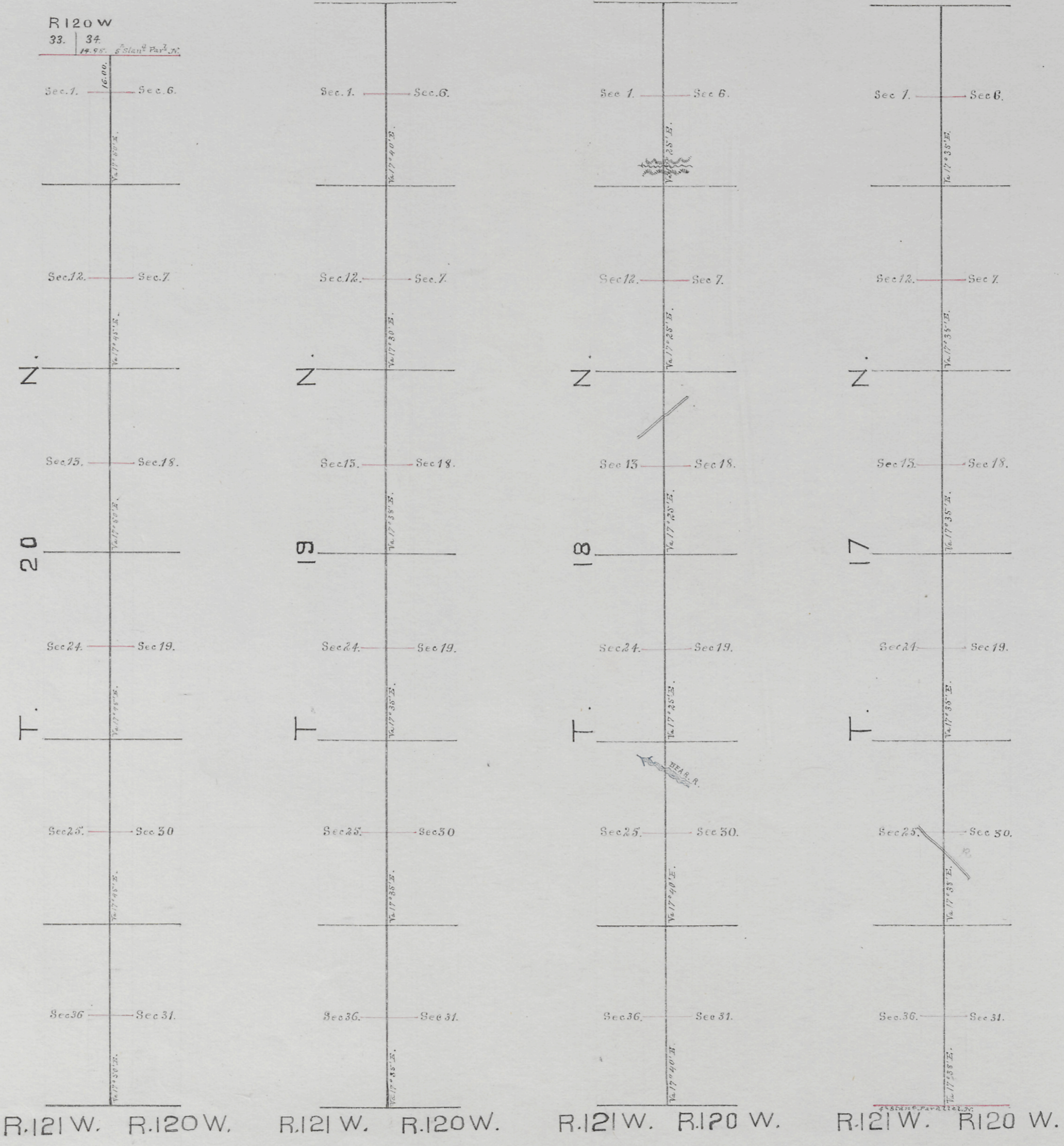
J. Copy.

1440

Accepted by the Hon. Commissioner in his letter "E"
May 11, 1912

(8)
index

15TH GUIDE MERIDIAN WEST



Survey Designated	By Whom Surveyed	Date of Contract	Amount of Survey	When Surveyed
15 Guide Merid ⁿ W.	McDary & Grant	July 7 th 1875	23 - 56 - 00	July 16-20 th 1875
Connections	" " "	" " "	14 - 95	" " "

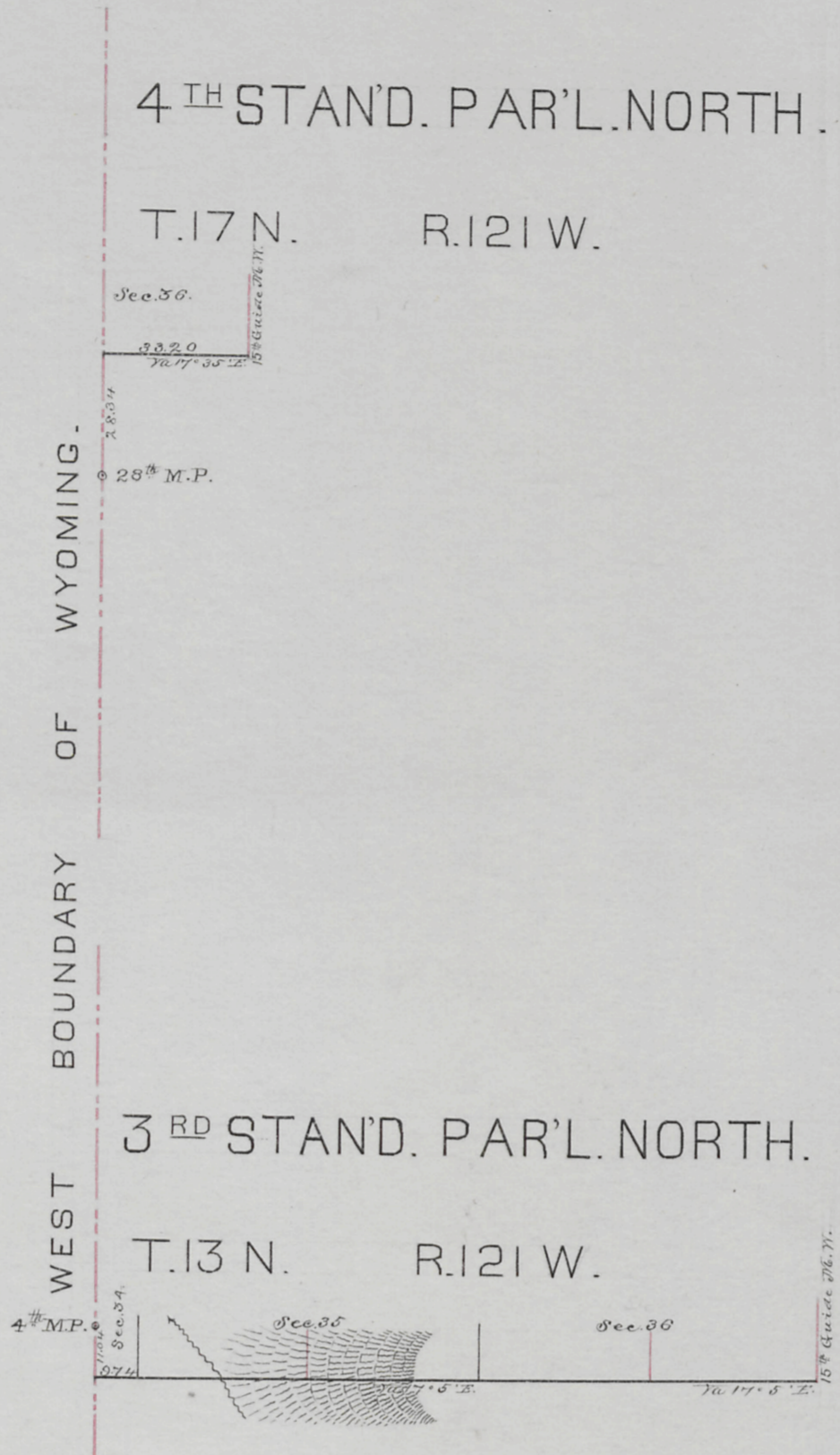
I hereby certify that the above Diagram of the 15th Guide Meridian West of the 6th Principal Meridian between the 4th and 5th standard Parallels North in Wyoming Territory, is strictly conformable to the field notes of the Survey thereof on file in this office which have been examined and approved.
 Surveyor General's office,
 Cheyenne Wyo. Jan'y 6th 1876.

Edw. C. David
 Sur^g Gen^l

(8)
Indexed

465

Comp'd



Survey Designated	By Whom Surveyed	Date of Contract	Area of Survey in Acres	When Surveyed
2 nd Stand. Par'l. N.	Whedary & Grant	July 7 th 1875	2 - 0 - 74	August 5 th 1876
Connections	"	"	" 11 - 4	"
4 th Stand. Par'l. N.	Whedary & Grant	July 7 th 1875	" 33 - 20	July 16 th 1875
Connections	"	"	" 25 - 34	"

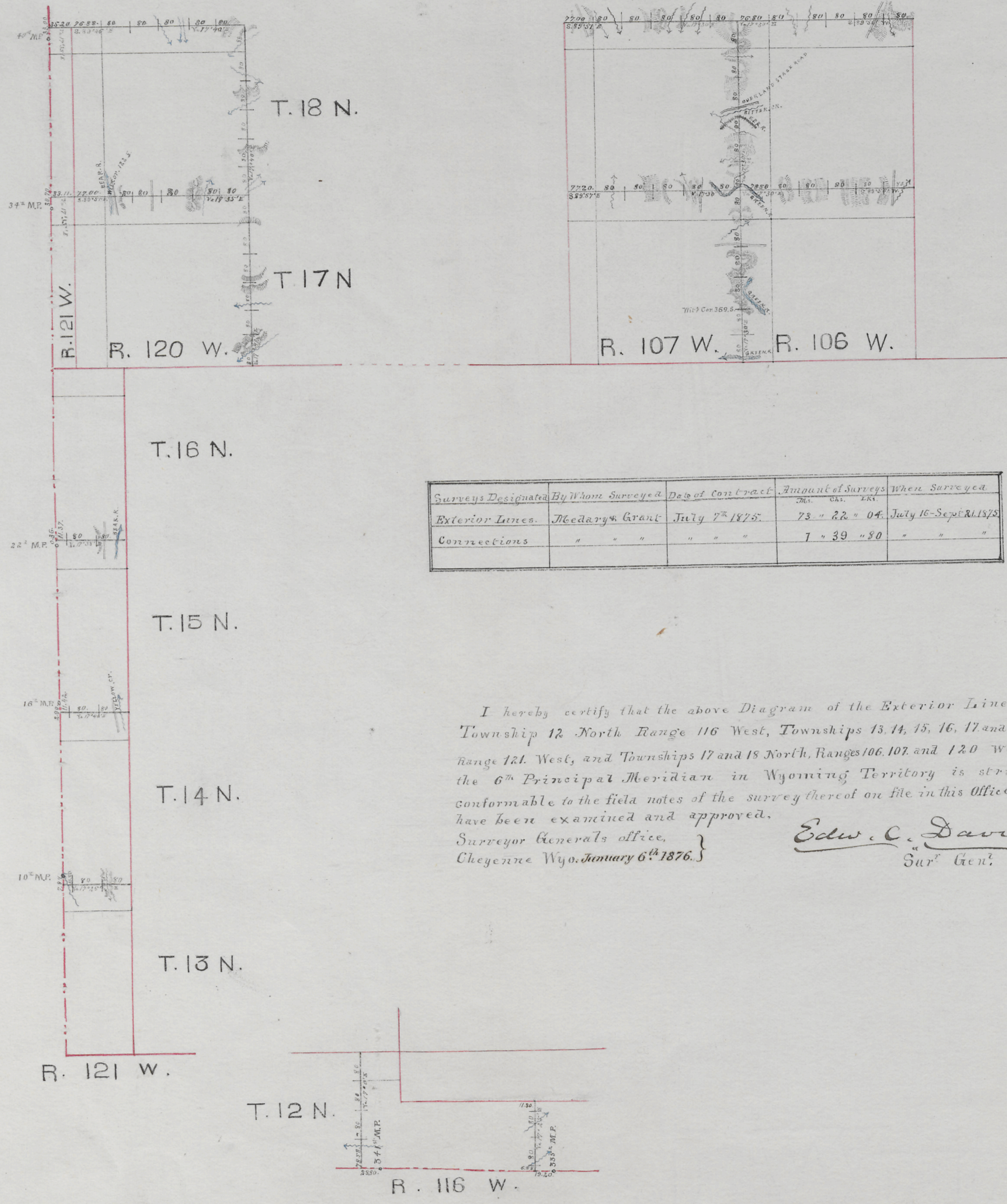
I hereby certify that the above Diagram of the 3rd and 4th Standard Parallels North, from the 15th Guide Meridian West to their intersection with the West Boundary of Wyoming Territory, is strictly conformable to the field notes of the survey thereof on file in this Office, which have been examined and approved.

Surveyor General's Office,
Cheyenne Wyo. July 6th 1876

Edw. C. David
" Sur. Gen."

(8)
Index

EXTERIOR LINES.



I hereby certify that the above Diagram of the Exterior Lines of Township 12 North Range 116 West, Townships 13, 14, 15, 16, 17 and 18 North Range 121 West, and Townships 17 and 18 North, Ranges 106, 107, and 120 West of the 6th Principal Meridian in Wyoming Territory is strictly conformable to the field notes of the survey thereof on file in this Office which have been examined and approved.

Surveyor General's office,
Cheyenne Wyo. January 6th 1876.

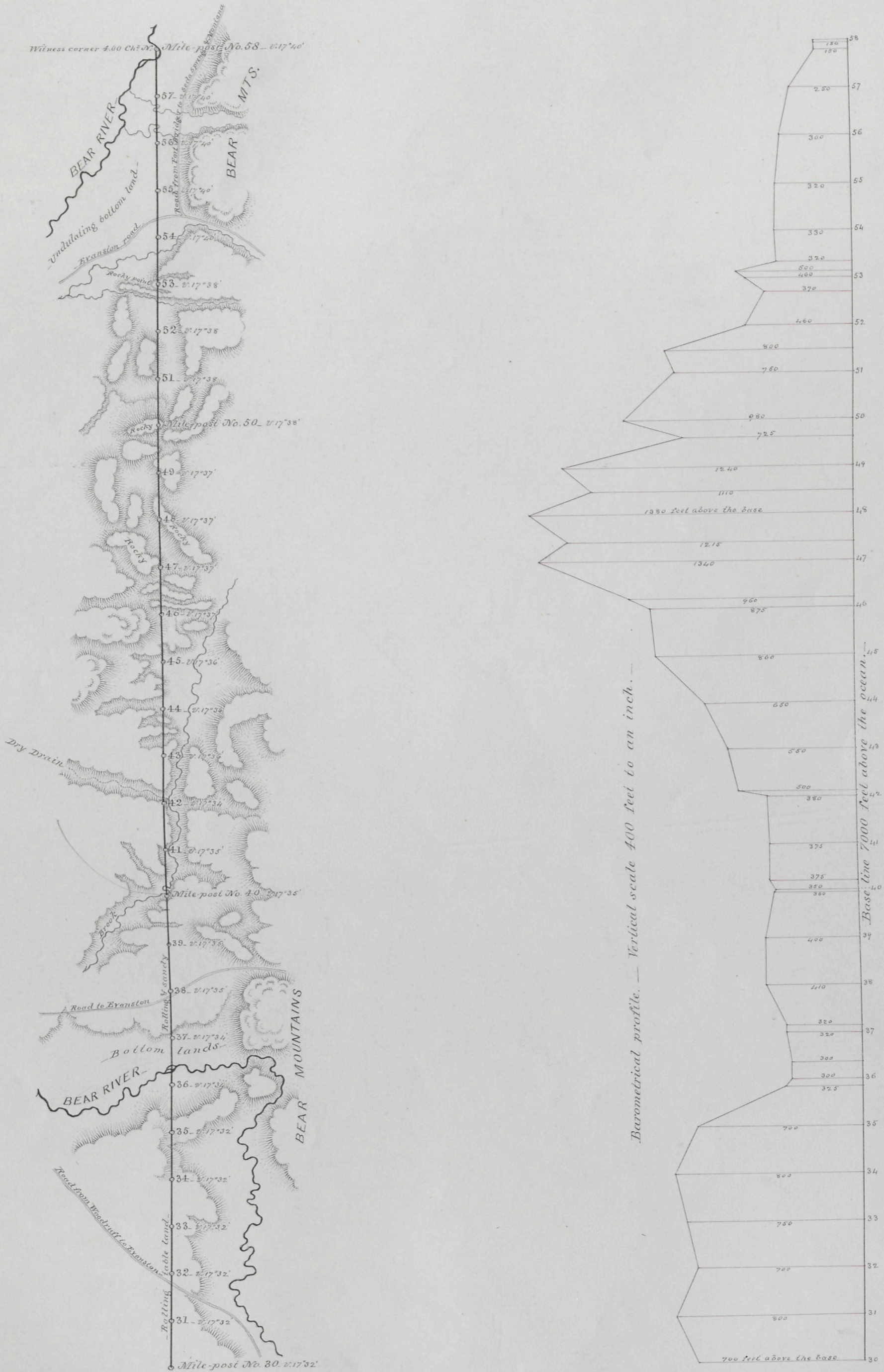
Edw. C. David
Sur^t Gen^l.

WEST BOUNDARY OF WYOMING

LONGITUDE 34 WEST

From mile-post No. 30 to mile-post No. 58

Scale 2 miles to an inch. Magnetic Variation East



I Hereby Certify, that the above map is a correct representation of so much of the survey of the West Boundary of Wyoming, as extends from mile-post No. 30 to mile-post No. 58, as surveyed and marked by me, under Contract from the Commissioner of the General Land Office, dated May 29th 1843.

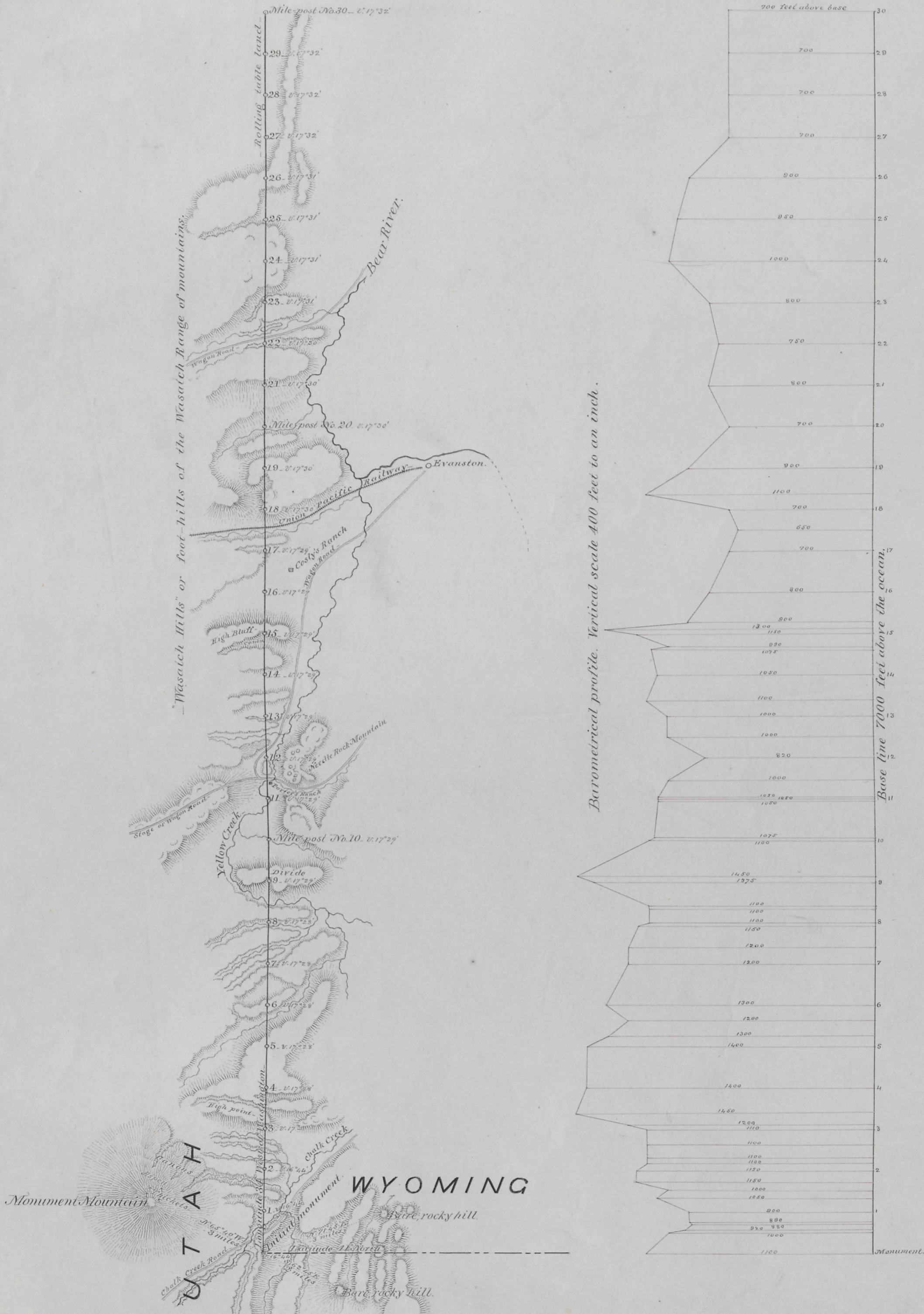
A. V. Richardt.
U. S. Astronomer and Surveyor.

WEST BOUNDARY OF WYOMING

LONGITUDE 34 WEST

From Initial Monument to mile-post No. 30.

Scale 2 miles to an inch. Magnetic Variation East



44

I Hereby Certify, that the above map is a correct representation of so much of the survey of the West Boundary of Wyoming, as extends from Initial Monument to mile-post No. 30, as surveyed and marked by me, under Contract from the Commissioner of the General Land Office, dated May 29th 1873

A. W. Richards
U. S. Astronomer and Surveyor.