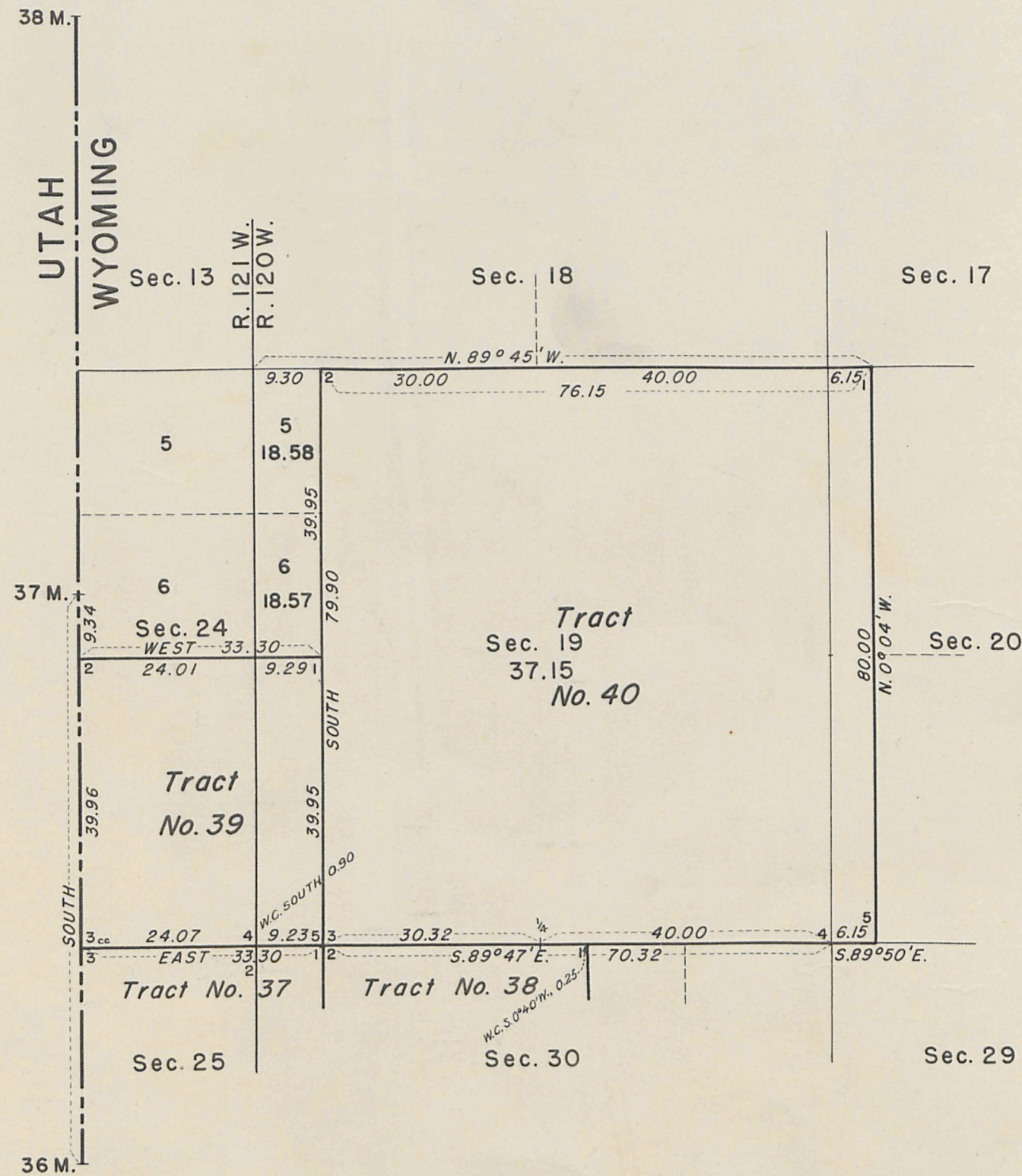


T. 18 N., R. 121 W., Sixth Principal Meridian, Wyoming, Field Note Links

Plat Accession Number(s)	Year(s) of Survey	
		Township Subdivision Plats
6500	1948	https://www.wy.blm.gov/cadastral/countyplats/uinta/fieldnotes/t18nr120w_gp214fn_t39-40.pdf
479	1909	https://www.wy.blm.gov/cadastral/countyplats/uinta/fieldnotes/t18nr121w_c338fn.pdf
478	1875	https://www.wy.blm.gov/cadastral/countyplats/uinta/fieldnotes/t18nr121w_c080fn.pdf
		Township Exterior Plats
1978	1909	https://www.wy.blm.gov/cadastral/countyplats/uinta/fieldnotes/ext1440.pdf
1978	1909	https://www.wy.blm.gov/cadastral/countyplats/uinta/fieldnotes/retext1440.pdf
466	1875	https://www.wy.blm.gov/cadastral/countyplats/uinta/fieldnotes/ext0466.pdf
463	1880; 1881; 1883; 1884	https://www.wy.blm.gov/cadastral/countyplats/sweetwater/fieldnotes/retext0403.pdf
463	1875	https://www.wy.blm.gov/cadastral/countyplats/sweetwater/fieldnotes/ext0463.pdf
		State Boundary
5995	1874	https://www.wy.blm.gov/cadastral/countyplats/lincoln/fieldnotes/wb_mp30-57.pdf

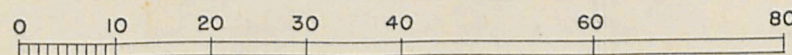
TOWNSHIPS 18 NORTH, RANGES 120 AND 121 WEST, OF THE SIXTH PRINCIPAL MERIDIAN, WYOMING.
METES AND BOUNDS SURVEY



THIS PLAT OF THE METES AND BOUNDS SURVEY OF A PORTION OF TS. 18 N., RS. 120 AND 121 W., REPRESENTS A RETRACEMENT AND REESTABLISHMENT OF THE LINES OF THE ORIGINAL SURVEY, DESIGNED TO RESTORE THE CORNERS OF TRACTS 39 AND 40 TO THEIR ORIGINAL LOCATIONS ACCORDING TO THE BEST AVAILABLE EVIDENCE.

INDEX TO SEGREGATED TRACTS

TRACT NO.	ENTRY AND STATUS	ORIGINAL SURVEY			
		TP	RG	SEC.	SUBDIVISIONS
39	EVANSTON 297 PAT. C. W. WELKER	18	121	24	LOTS 3&4 E½SE¼
40	GRANT PAT. UNION PACIFIC RR.	18	120	19	ALL



SCALE : 1 inch = 20 chains.

UNITED STATES DEPARTMENT OF THE INTERIOR
BUREAU OF LAND MANAGEMENT
WASHINGTON, D. C., FEBRUARY 27, 1951

THIS PLAT IS STRICTLY CONFORMABLE TO THE APPROVED FIELD NOTES AND THE SURVEY, HAVING BEEN CORRECTLY EXECUTED IN ACCORDANCE WITH THE REQUIREMENTS OF LAW AND THE REGULATIONS OF THIS BUREAU, IS HEREBY ACCEPTED.

FOR THE DIRECTOR

Carl G. Harrington

CHIEF, DIVISION OF CADASTRAL ENGINEERING

THE SURVEY WAS EXECUTED BY F. WAYNE FORREST, ASSOCIATE CADASTRAL ENGINEER, BEGINNING AUGUST 24 AND COMPLETED AUGUST 26, 1948, UNDER SPECIAL INSTRUCTIONS FOR GROUP 214 WYOMING, DATED MAY 21, 1948.

J.G.H.
Ex. J.G.H.

*Filed in Survey Office
April 9, 1951.*

Supplemental Plat No. 1

Tract No. 37, Resurvey Township No. 18 North, Range No. 121 West of the Sixth Principal Meridian, Wyoming

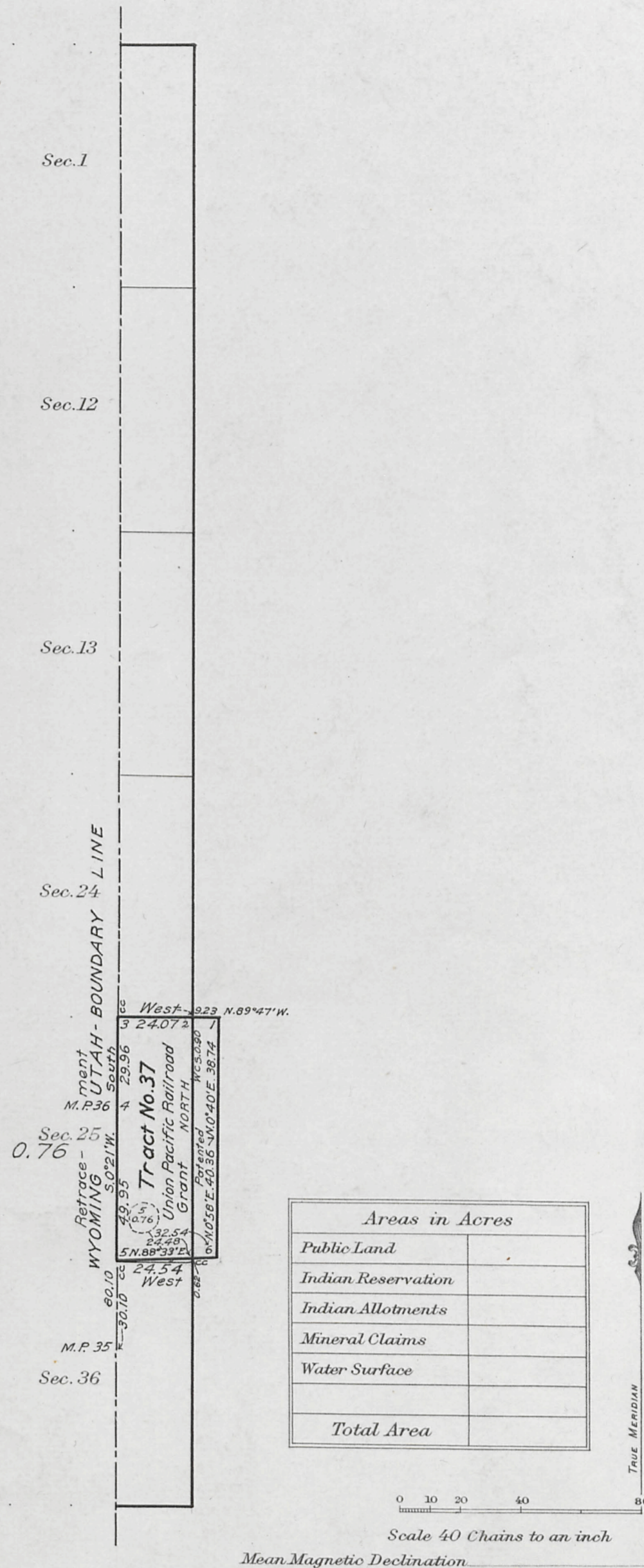
THIS SUPPLEMENTAL PLAT OF RESURVEY TOWNSHIP NO. 18 NORTH, RANGE NO. 121 WEST OF THE SIXTH PRINCIPAL MERIDIAN, WYOMING, PLAT APPROVED OCTOBER 2, 1911, IS MADE TO SHOW THE INVASION OF TRACT NO. 37, WITH RESULTING FRACTIONAL LOT, IN SECTION 25, WHICH WAS SURVEYED BY HOWARD W. MILLER IN RESURVEY TOWNSHIP NO. 18 NORTH, RANGE NO. 120 WEST, UNDER INSTRUCTIONS FOR GROUP 46, DATED APRIL 3, 1920, AND IS HEREBY APPROVED.

OFFICE OF U.S. SURVEYOR GENERAL, CHEYENNE, WYOMING,

APRIL 13, 1921.

Charles L. Becker
Surveyor General

INDEX TO SEGREGATED TRACTS								
Resurvey	Description By Original Survey							
Tract No.	T.	R.	Sec.	Subdivisions	Entry Kind No.	Status in L. and Office	Entryman	
37	18	121	25	All	Grant	Potented	Union Pacific Railroad	



Areas in Acres	
Public Land	
Indian Reservation	
Indian Allotments	
Mineral Claims	
Water Surface	
Total Area	

Scale 40 Chains to an inch
Mean Magnetic Declination

Surveys Designated	By Whom Surveyed	Group		Amount of Surveys			When Surveyed	
		No.	Date	Mls.	chs.	lks.	Began	Completed
Segregated Tract Lines	Howard W. Miller	46	April 3, 1920	2	64	85	November 4, 1920	November 5, 1920
Connecting Lines	Howard W. Miller	46	April 3, 1920			62	November 4, 1920	November 5, 1920
Resurvey Subdivision Lines	Newell J. Burnham	338	June 8, 1909				August 28, 1909	August 31, 1909
Resurvey Township Line	Newell J. Burnham	338	June 8, 1909				August 8, 1909	August 8, 1909
RETRACEMENT State Boundary Line	Newell J. Burnham	338	June 8, 1909				August 29, 1909	August 29, 1909

The above map of Township No. _____ Range No. _____ of the _____ Meridian _____ is strictly conformable to the field notes of the survey thereof on file in this office, which have been examined and approved.
U. S. Surveyor General's Office.
Surveyor General.

415-B.

Trans to Granston 18-121
Jun 21, 1921

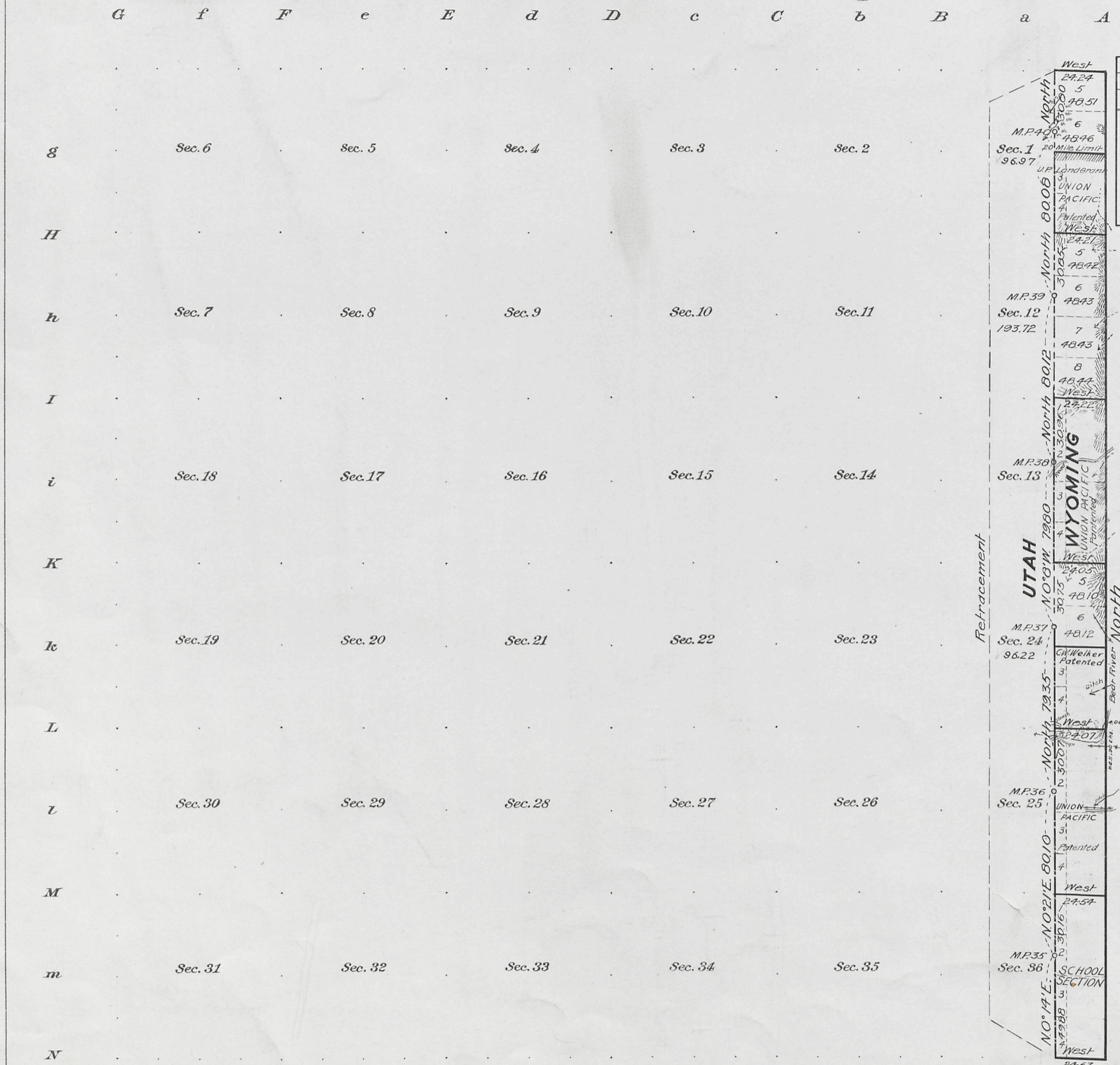
A1

19

479

(4-675a)

Resurvey Township No 18 North, Range No 121 West of the Sixth Principal Meridian, Wyoming.



Original Survey						
T.	R.	Sec.	Subdivisions	Entry Kind No	Status in Land Office	Entryman
18	121	1	Lots 3 & 4 ESE	L.G.	Patented	Union Pacific
"	"	13	All	L.G.	Patented	Union Pacific
"	"	24	Lots 3 & 4, ESE	F.H. 297	Patented	C.W. Welker
"	"	25	All	L.G.	Patented	Union Pacific
"	"	36	All	S.S.	Patented	Wyoming

Y
X
X
W
W
V
V
U
t

FIFTEENTH GUIDE MERIDIAN WEST

Public Land	386.91
Indian Reservation	
Indian Allotments	
Mineral Claims	
Water Surface	
Patented Land	777.34
Total Area	1,164.25

Scale 40 Chains to an inch

Mean Magnetic Declination 17° 42' E.
Latitude 41° 29' N.
Longitude 111° 03' W.

Surveys Designated.	By Whom Surveyed.	Contract		Amount of Surveys			When Surveyed.	
		No.	Date	Mls.	chs.	lls.	Begun.	Completed.
Resurvey NE & S Township Lines	Newell J. Burnham	338	June 8, 1909	6	48	87	Aug. 8, 1909	Oct. 2, 1909
Resurvey Subdivision Lines	Newell J. Burnham	338	June 8, 1909	1	41	09	Aug. 28, 1909	Aug. 31, 1909
Connections	Newell J. Burnham	338	June 8, 1909	1	72	79	Aug. 28, 1909	Aug. 31, 1909
Refractment	Newell J. Burnham	338	June 8, 1909	6	00	13	Aug. 29, 1909	Aug. 29, 1909
W. Boundary Wyoming	A.V. Richards	G.L.O.	May 29, 1873	6	00	68	June 8, 1874	June 12, 1874

The above map of Township No. 18 North Range No 121 West of the Sixth Principal Meridian Wyoming is strictly conformable to the field notes of the survey thereof on file in this office, which have been examined and approved.

U.S. Surveyor General's Office,
Cheyenne, Wyoming, October 2, 1911.

Stephens P. Harmon
Surveyor General.

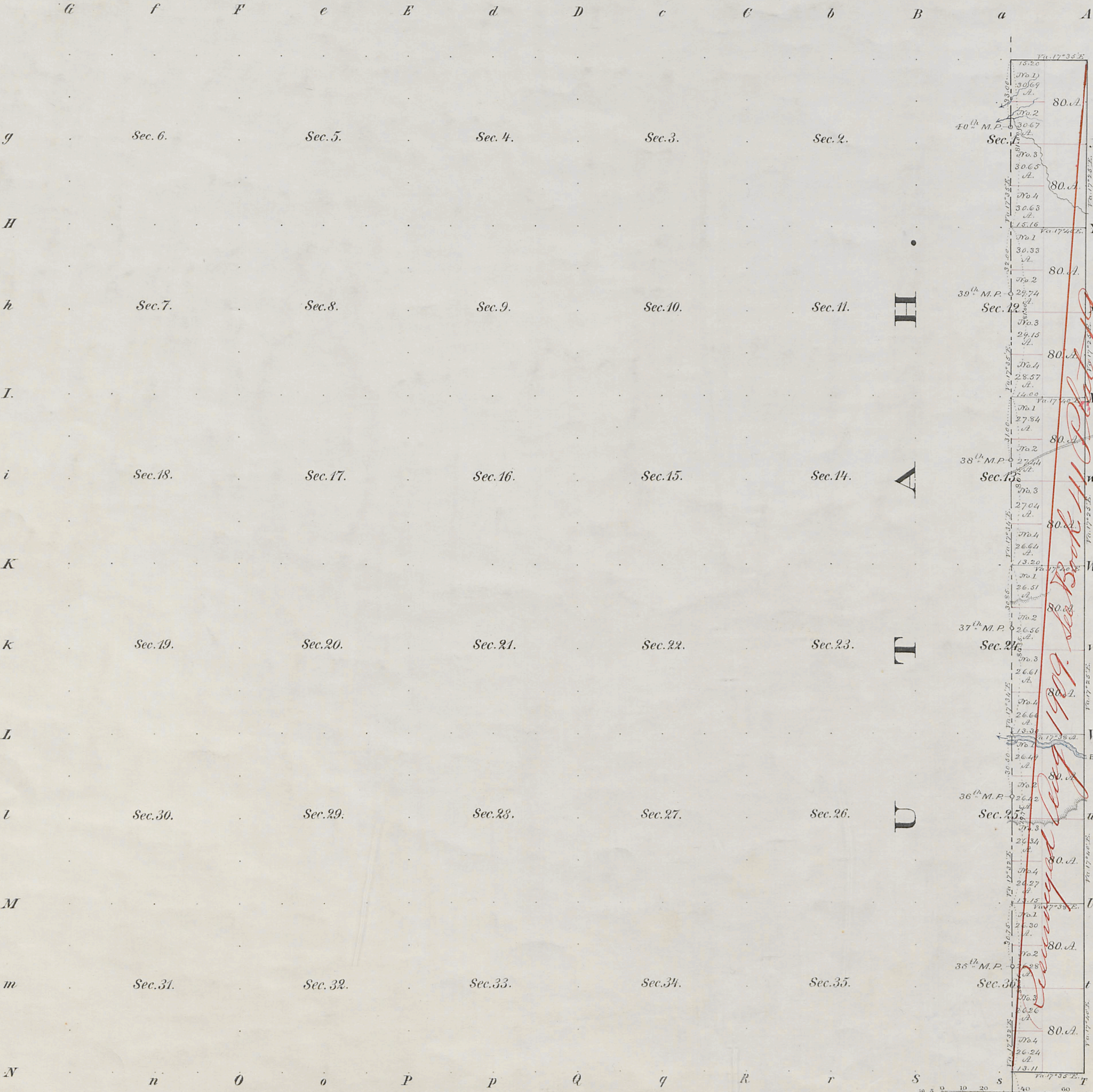
Accepted by the Hon. Commissioner in letter "C" May 11, 1912.
Duplicate plat mailed Eastern Land Office May 17, 1912.

18-121

415A

478

TOWNSHIP N° 18 NORTH, RANGE N° 121 WEST OF THE SIXTH PRINCIPAL MERIDIAN



Meanders of

Posts	Courses	Ch ^s Lk ^s	Posts	Courses	Ch ^s Lk ^s	Posts	Courses	Ch ^s Lk ^s

1626.33, Total number of Acres.

Surveys Designated	By Whom Surveyed	Date of Contract	Amount of Surveys	When Surveyed
N° S. Township Lines	Medary & Grant	July 7 th 1873	M. 68 3/4	July 21 st 1875
Subdivisions	Medary & Grant	July 7 th 1873	2 - 8 - 81	July 28 th 1875
Connections			1 - 75 - 10	
15 th Guide Meridian W.	Medary & Grant	July 7 th 1875	6 - 00 - 00	July 16 th 1875
W. Boundary of Wyoming	A. Y. Richards	May 29 th 1873	6 - 2 - 30	June 9 th & 10 th 1874

The above Map of Township N° 18 North of Range N° 121 West of the Sixth Principal Meridian in Wyoming Territory is strictly conformable to the field notes of the survey thereof on file in this Office, which have been examined and approved

Surveyor General's Office, Edw. C. David, Supt. Gen.

Cheyenne Wyoming
January 6th 1876.

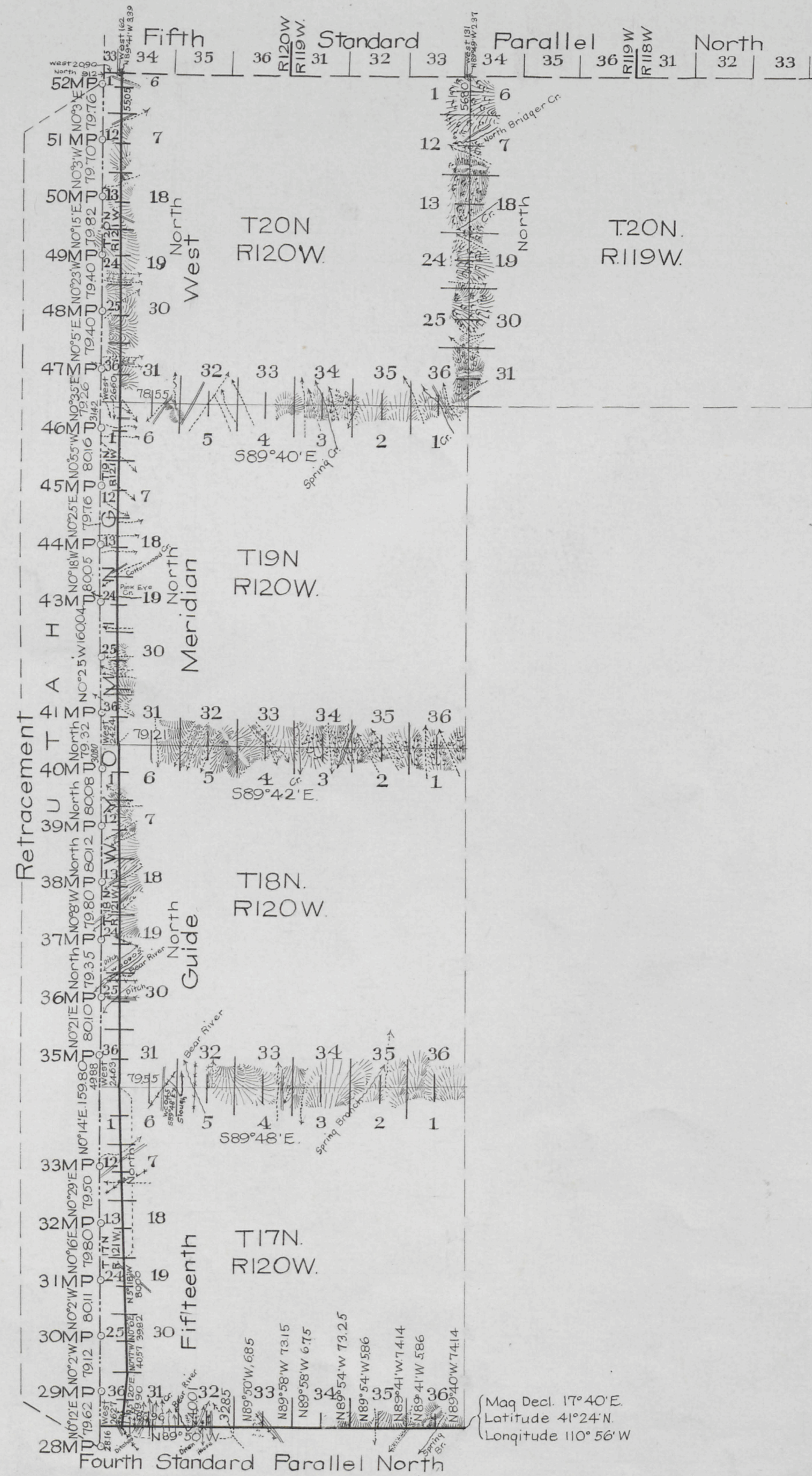
A. Gast & Co., St. Louis, Mo.

41
Indexed

1978

RESURVEY TOWNSHIP EXTERIORS

Scale: 160 Chains to 1 inch



This Plat
of the Resurvey
of the
Fourth Standard Parallel North through Ranges 120, and 121W,
Fifteenth Guide Meridian West through Townships 17, 18, 19
and 20 N, North Boundaries of Townships 17, 18 and 19 North,
Ranges 120 and 121 W, and West Boundary of T20N
R.119W. of the Sixth Principal Meridian, Wyoming, and
of the Retracement
of the
West Boundary of Wyoming from Mile Post 28 to Mile
Post 52 is strictly conformable to the field notes of
the resurvey thereof

by
Newell J. Burnham, U.S.D.S.
under his
Contract No 338,
dated June 8, 1909,
which have been examined, approved and filed in this
office.
U.S. Surveyor General's Office,
Cheyenne, Wyoming,
October 2, 1911.

Stephen P. Hancock
Surveyor General

Surveys Designated	Amount			When Surveyed
	Mls	Chs	Lks.	
Standard Lines Retraced	6	26	09	July 10-July 12, 1909
Standard Lines Resurveyed	30	01	43	July 13-Sept 15, 1909
Connecting Lines	1	68	95	July 13-Oct 5, 1909
State Line Retraced	23	74	07	Aug 4-Oct 4, 1909
Township Lines	24	49	58	July 15-Oct 5, 1909

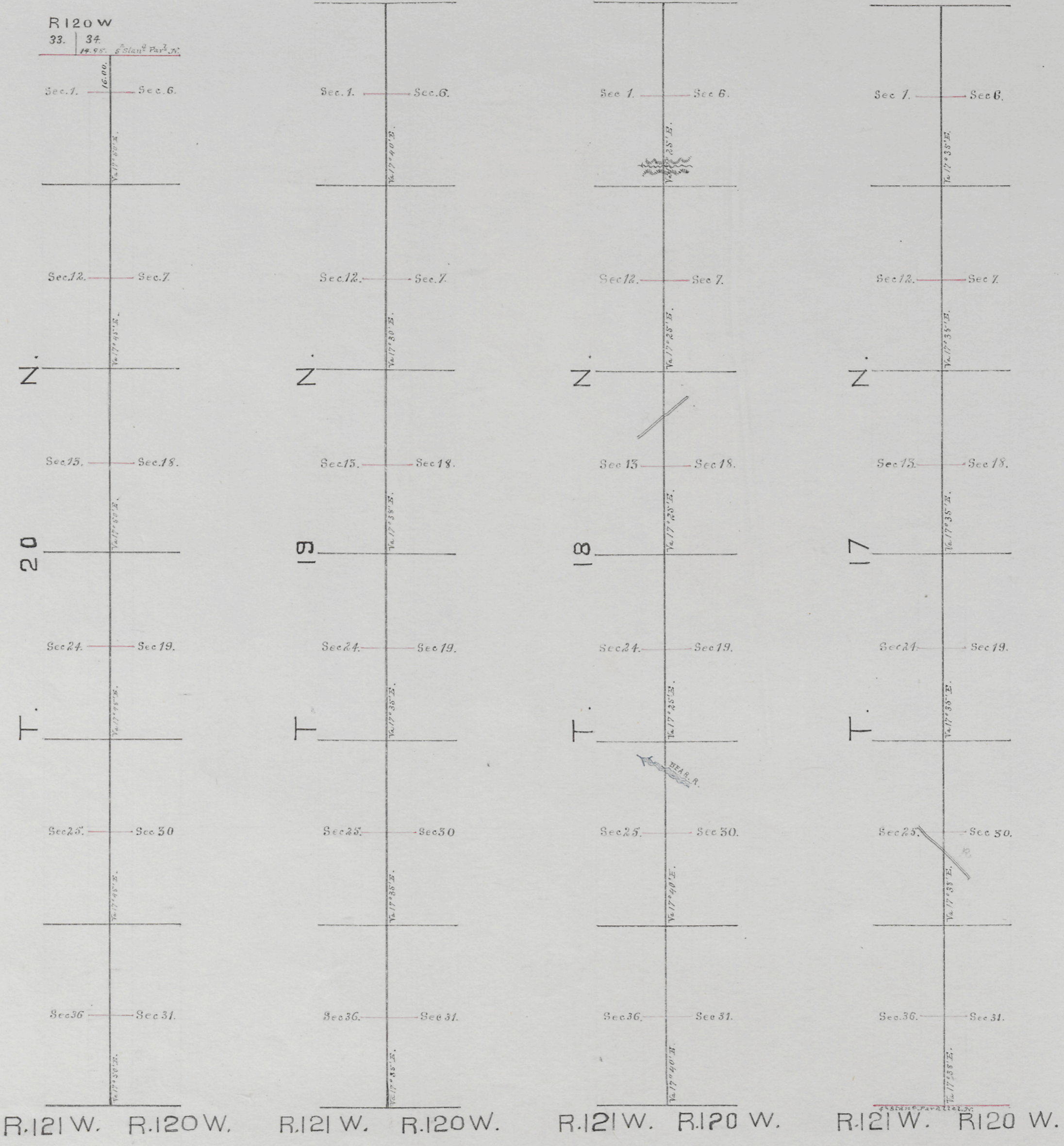
(Mag Decl. 17°40' E.
Latitude 41°24' N.
Longitude 110°56' W)

J. Copy.

*Accepted by the Hon. Commissioner in his letter "E"
May 11, 1912*

(8)
Index

15TH GUIDE MERIDIAN WEST



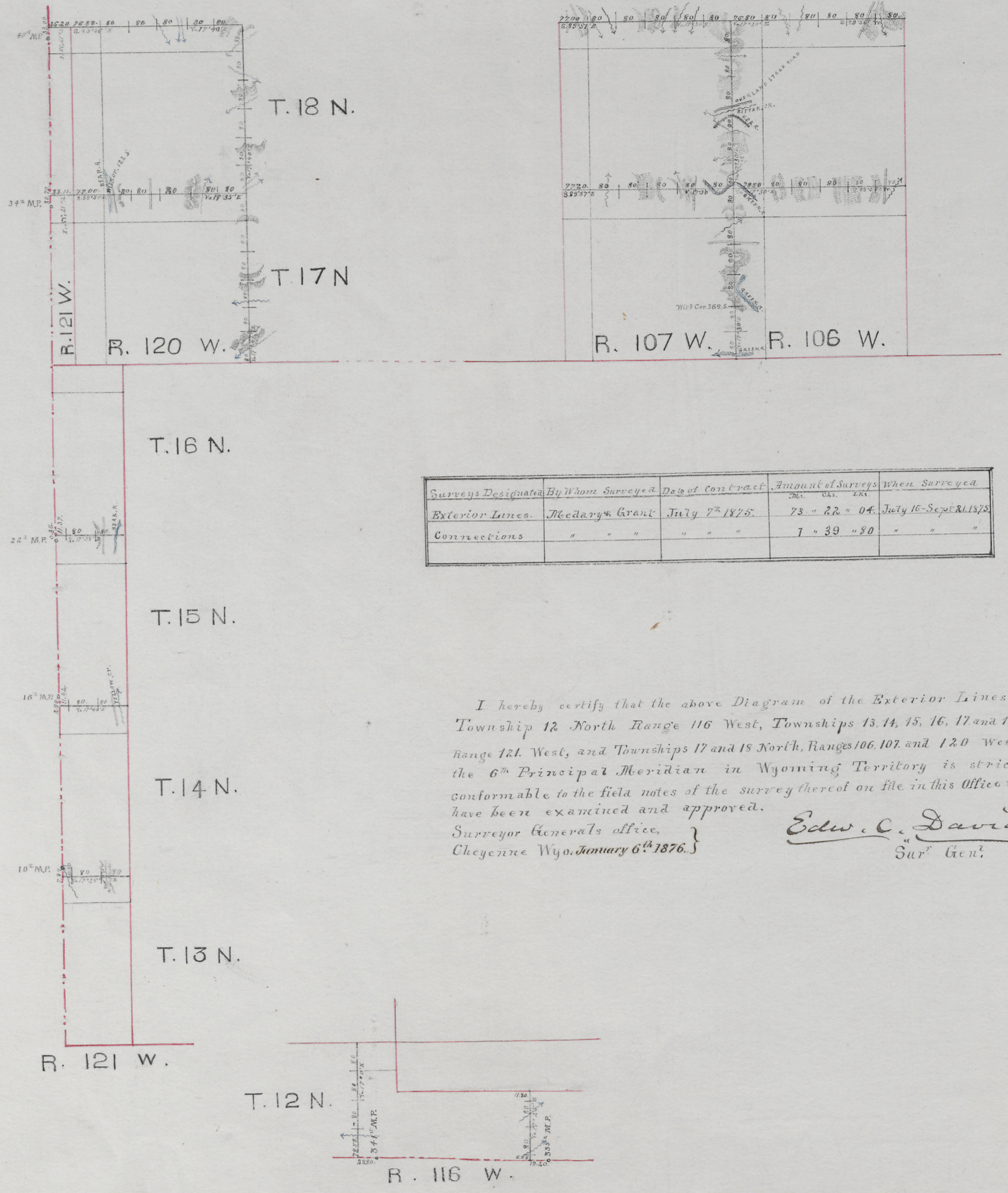
Survey Designated	By Whom Surveyed	Date of Contract	Amount of Survey	When Surveyed
15 Guide Merid ⁿ W.	McDary & Grant	July 7 th 1875	23 - 56 - 00	July 16-20 th 1875
Connections	" " "	" " "	14 - 95	" " "

I hereby certify that the above Diagram of the 15th Guide Meridian West of the 6th Principal Meridian between the 4th and 5th Standard Parallels North in Wyoming Territory, is strictly conformable to the field notes of the Survey thereof on file in this office which have been examined and approved.
 Surveyor General's office,
 Cheyenne Wyo. Jan'y 6th 1876.

Edw. C. David
 Sur^g Gen^l

(8)
Index

EXTERIOR LINES.

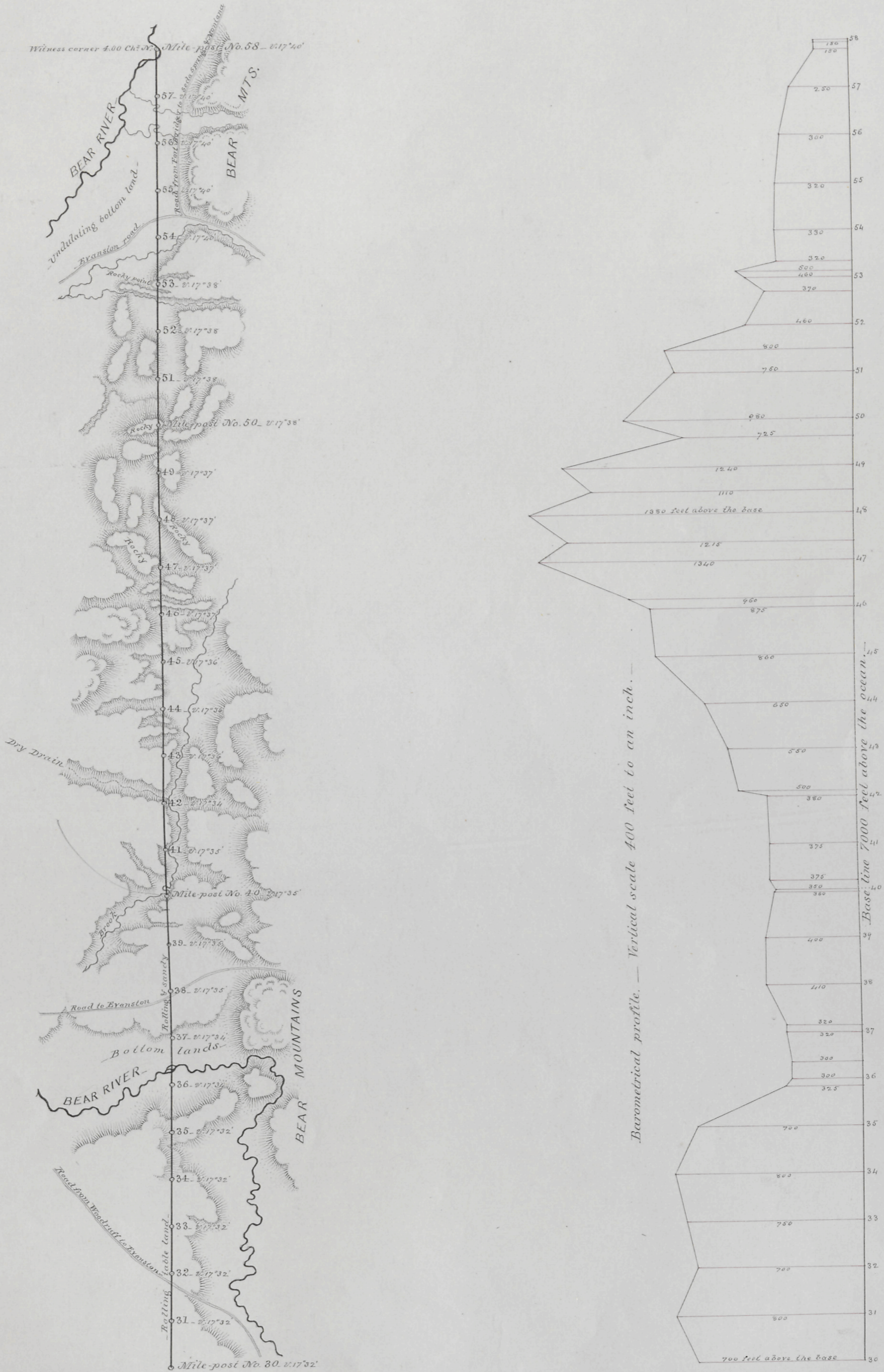


WEST BOUNDARY OF WYOMING

LONGITUDE 34 WEST

From mile-post No. 30 to mile-post No. 58

Scale 2 miles to an inch. Magnetic Variation East



I Hereby Certify, that the above map is a correct representation of so much of the survey of the West Boundary of Wyoming, as extends from mile-post No. 30 to mile-post No. 58, as surveyed and marked by me, under Contract from the Commissioner of the General Land Office, dated May 29th 1843.

A. V. Richardt.
U. S. Astronomer and Surveyor.