

T. 47 N., R. 92 1/2 W., Sixth Principal Meridian, Wyoming, Field Note Links

Plat Accession Number(s)	Year(s) of Survey	Township Subdivision Plats
4939	1917	https://www.wy.blm.gov/cadastral/countyplats/washakie/fieldnotes/t47nr92.5w_gp043fn.pdf
4939	1917	https://www.wy.blm.gov/cadastral/countyplats/washakie/fieldnotes/t47nr92.5w_gp043fn_bnd.pdf

Township No. 47 North, Range No. 92 1/2 West of the Sixth Principal Meridian, Wyoming

G f F e E d D c C b B a A

g

H

h

I

i

K

k

L

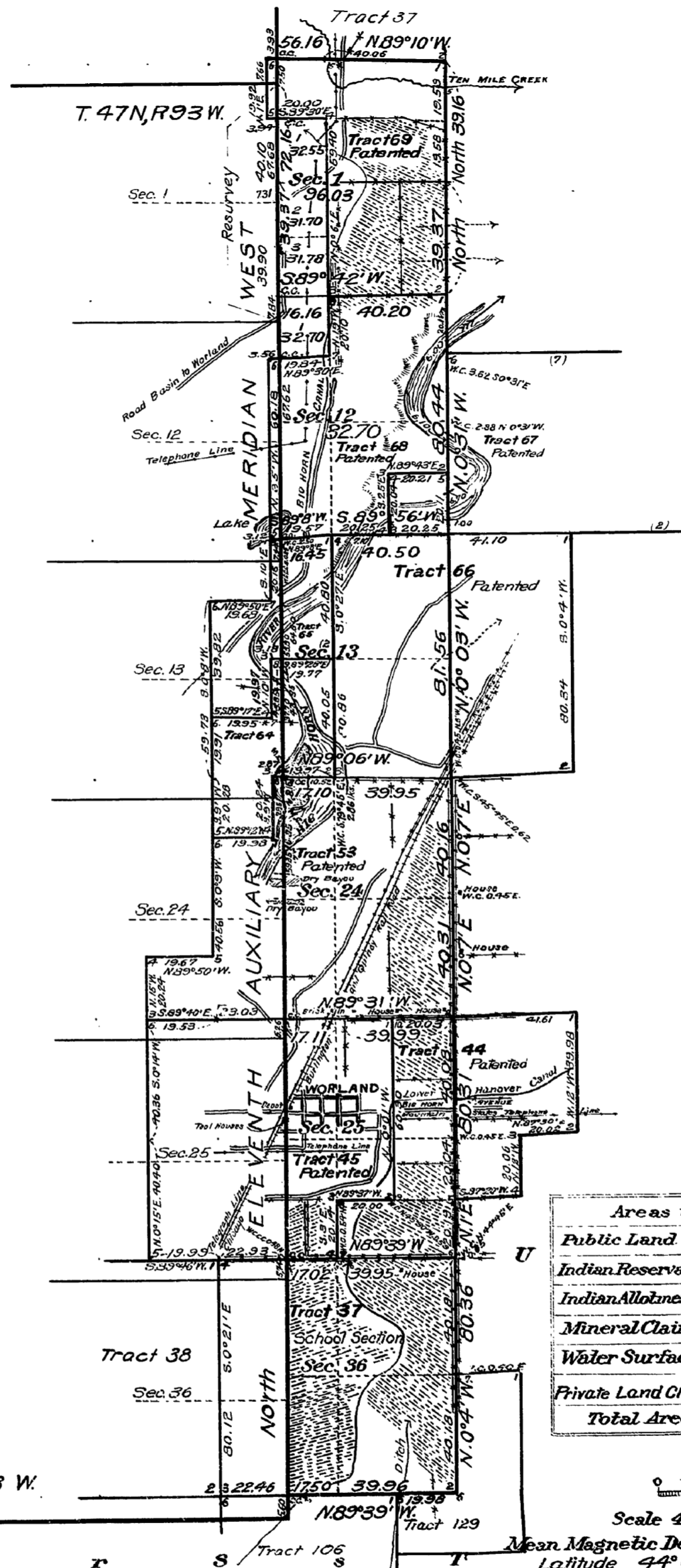
l

M

m

N

All segregated tracts shown on the plat of T.47N., R.93W. approved by the Surveyor General November 26, 1913 a portion or all of which extend east of the east boundary of said Township and described as being in T.47N., R.92W. are the same tracts as shown hereon under the same tract numbers as being located all or in part in T.47N., R.92 1/2 W.



Areas in Acres.	
Public Land	128.73
Indian Reservation	
Indian Allotments	
Mineral Claims	
Water Surface	
Private Land Claims	2611.00
Total Area	2739.73

Scale 40 Chains to an inch

Mean Magnetic Declination
Latitude 44° 00' N.
Longitude 107° 49' W.

Surveys Designated.	By Whom Surveyed.	Group No.	Date	Amount of Surveys		When Surveyed.	
				Mls. chs.	lks.	Begun.	Completed.
Subdivisions	Alexander Douglas	43	February 27, 1917	3 44	43	July 14, 1917	July 21, 1917
Connections	"	"	"	1 07	39	July 18, 1917	July 18, 1917
South Boundary Resurvey	"	"	"	57	46	July 18, 1917	July 18, 1917
East Boundary Resurvey	"	"	"	6 01	67	July 18, 1917	July 27, 1917
North Boundary Resurvey	"	"	"	56	16	June 23, 1917	June 23, 1917
11th Auxiliary Meridian W.	Wilford W. Ulterback	3	July 21, 1910	6 01	30	August 25, 1910	August 27, 1910
Segregated Tract Lines	"	"	"	"	"	November 5, 1910	May 8, 1911
11th Auxiliary Meridian West	Alexander Douglas	43	February 27, 1917	1 00	00	July 21, 1917	July 21, 1917
Exterior Connections	"	"	"	39	49	June 23, 1917	July 18, 1917

The above map of Township No. 47 North Range No. 92 1/2 West of the Sixth Principal Meridian Wyoming is strictly conformable to the field notes of the survey thereof on file in this office, which have been examined and approved.

U.S. Surveyor General's Office,
Cheyenne Wyoming October 31, 1918
Charles L. Deeter
Surveyor General.

*Triplicate plat transmitted to
Buffalo Land Office Aug. 13, 1919
47-92 1/2*