

T. 48 N., R. 92 1/2 W., Sixth Principal Meridian, Wyoming, Field Note Links

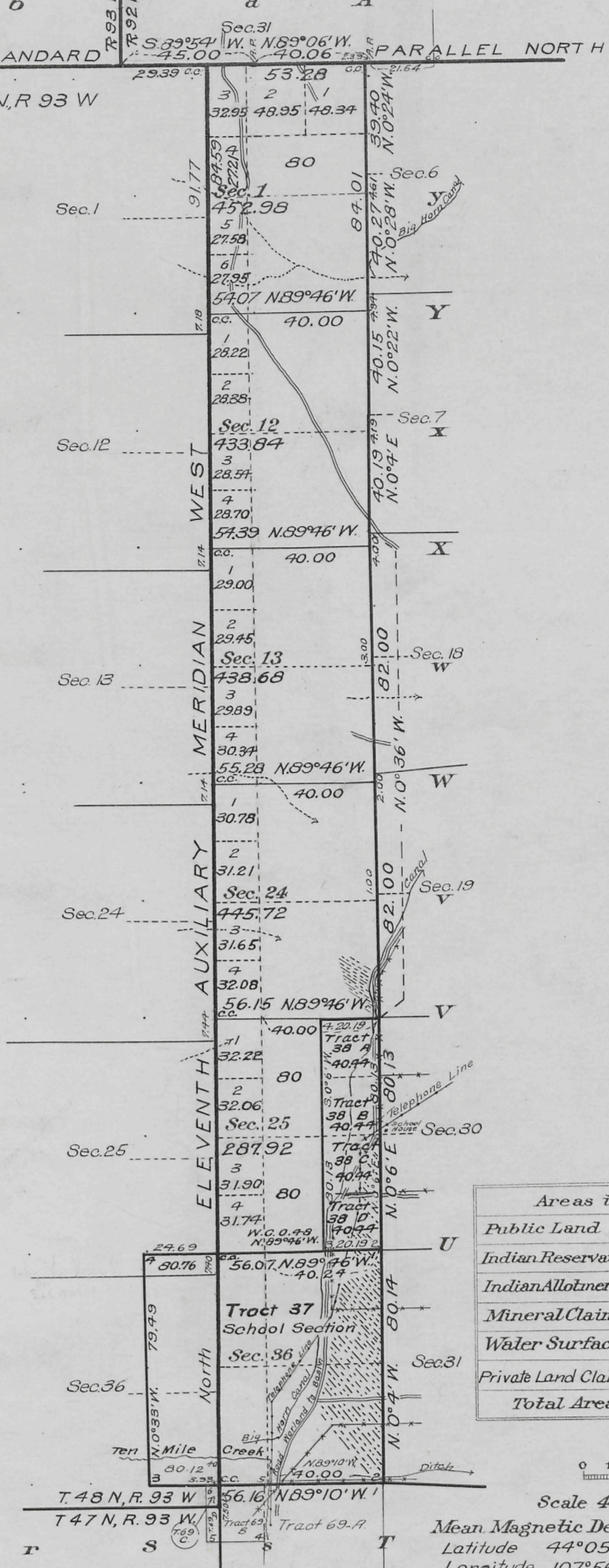
Plat Accession Number(s)	Year(s) of Survey	Township Subdivision Plats
4940	1917	https://www.wy.blm.gov/cadastral/countyplats/washakie/fieldnotes/t48nr92.5w_gp043fn.pdf

Township No 48 North, Range No 92 1/2 West of the Sixth Principal Meridian, Wyoming

g f F e E d D c C b a A
T W E L F T H S T A N D A R D P A R A L L E L N O R T H

g
H
h
I
i
K
k
L
l
M
m
N

All segregated tracts shown on the plat of T.48 N., R.93 W approved by the Surveyor General November 26, 1913, a portion or all of which extend east of the east boundary of said Township, and described as being in T.48 N., R.92 W, are the same tracts as shown hereon under the same tract numbers as being located all or in part in T.48 N., R.92 1/2 W.



Areas in Acres.	
Public Land	2059.14
Indian Reservation	
Indian Allotments	
Mineral Claims	
Water Surface	
Private Land Claims	610.79
Total Area	2669.93

Scale 40 Chains to an inch

Mean Magnetic Declination
Latitude 44°05' N
Longitude 107°56 1/2' W.

The above map of Township No. 48 North Range No 92 1/2 West of the Sixth Principal Meridian Wyoming is strictly conformable to the field notes of the survey thereof on file in this office, which have been examined and approved.

U.S. Surveyor General's Office,
Cheyenne Wyoming November 30, 1918
Charles L. Decker
Surveyor General.

Surveys Designated.	By Whom Surveyed.	Group		Amount of Surveys		When Surveyed.	
		No.	Date	Mts. chs.	lks.	Begun.	Completed.
Subdivisions	Alexander Douglas	43	February 27, 1917	3	35	96	June 23, 1917 June 29, 1917
Connections	"	"	"	46	19		June 23, 1917 June 29, 1917
East Boundary Resurvey	"	"	"	6	04	28	June 21, 1917 June 29, 1917
South Boundary Resurvey	"	"	"	56	16		July 18, 1917 July 18, 1917
12th Standard Parallel N. Resurvey	Douglas and King	43	"	53	28		June 25, 1917 Oct 15, 1918
11th Auxiliary Meridian W. Resurvey	Wilford W. Utterback	3	July 21, 1910	6	11	77	August 27, 1910 August 27, 1910
Segregated Tract Lines	"	"	"				May 25, 1911 May 25, 1911

Triplicate plat transmitted to
Buffalo Land Office, Aug. 13, 1919.
48-92 1/2