

T. 44 N., R. 60 W., Sixth Principal Meridian, Wyoming, Field Note Links

Plat Accession Number(s)	Year(s) of Survey	
		Township Subdivision Plats
8778	2018	https://www.wy.blm.gov/cadastral/countyplats/weston/fieldnotes/t44nr60w_gp992fn.pdf
6814	1957	https://www.wy.blm.gov/cadastral/countyplats/weston/fieldnotes/t44nr60w_gp253fn.pdf
1166	1881	https://www.wy.blm.gov/cadastral/countyplats/weston/fieldnotes/t44nr60w_c125fn.pdf
		Township Exterior Plats
4922	1899-1900	https://www.wy.blm.gov/cadastral/countyplats/weston/fieldnotes/ext2960.pdf
1223	1881	https://www.wy.blm.gov/cadastral/countyplats/niobrara/fieldnotes/ext1223.pdf
1223	1881	https://www.wy.blm.gov/cadastral/countyplats/niobrara/fieldnotes/retext1223.pdf
		State Boundary
5975	1904-05	https://www.wy.blm.gov/cadastral/countyplats/weston/fieldnotes/eb_mp30-56.pdf
-	1877	https://www.wy.blm.gov/cadastral/countyplats/weston/fieldnotes/eb_mp39-81.pdf

TOWNSHIP 44 NORTH, RANGE 60 WEST, OF THE SIXTH PRINCIPAL MERIDIAN, WYOMING.

DEPENDENT RESURVEY

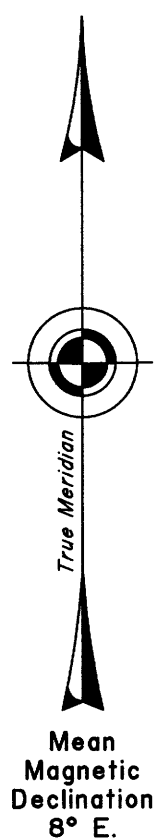
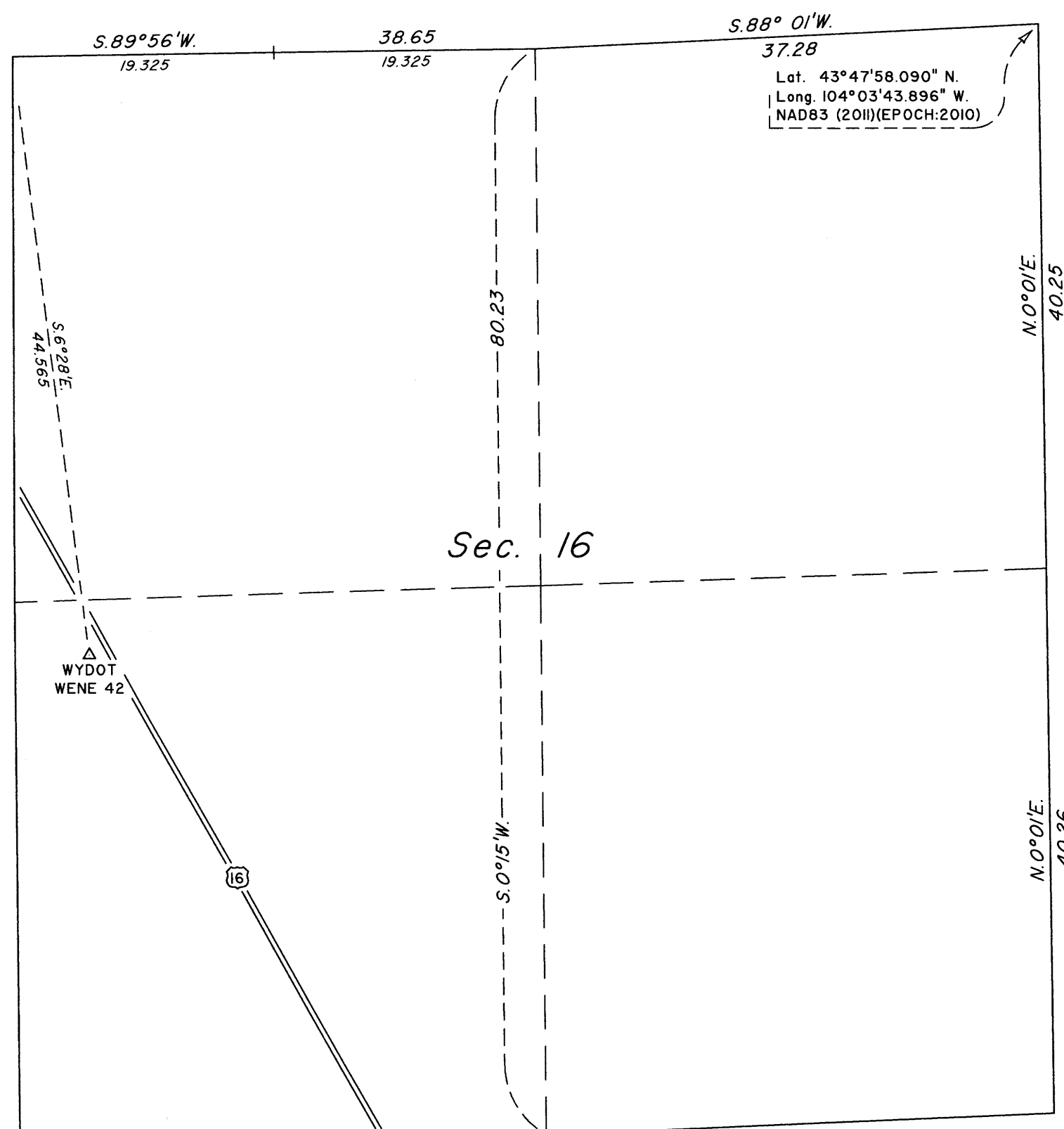
A history of surveys is contained in the field notes.

This plat represents the dependent resurvey of a portion of the subdivisional lines, designed to restore the corners in their true original locations according to the best available evidence, T. 44 N., R. 60 W., Sixth Principal Meridian, Wyoming.

Lotting and areas are as shown on the plats approved August 3, 1882, and accepted March 18, 1959.

Survey executed by James E. Jacob, Cadastral Surveyor, beginning June 26, 2018, and completed June 27, 2018, pursuant to special instructions and assignment instructions dated May 15, 2018, for Group No. 992, Wyoming.

Solid lines not showing bearing and distance were resurveyed by Clarence E. Bilbray and Jack A. Eaves in 1957.



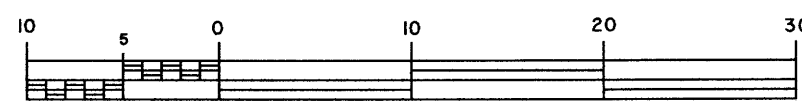
UNITED STATES DEPARTMENT OF THE INTERIOR
BUREAU OF LAND MANAGEMENT

Cheyenne, Wyoming March 25, 2020

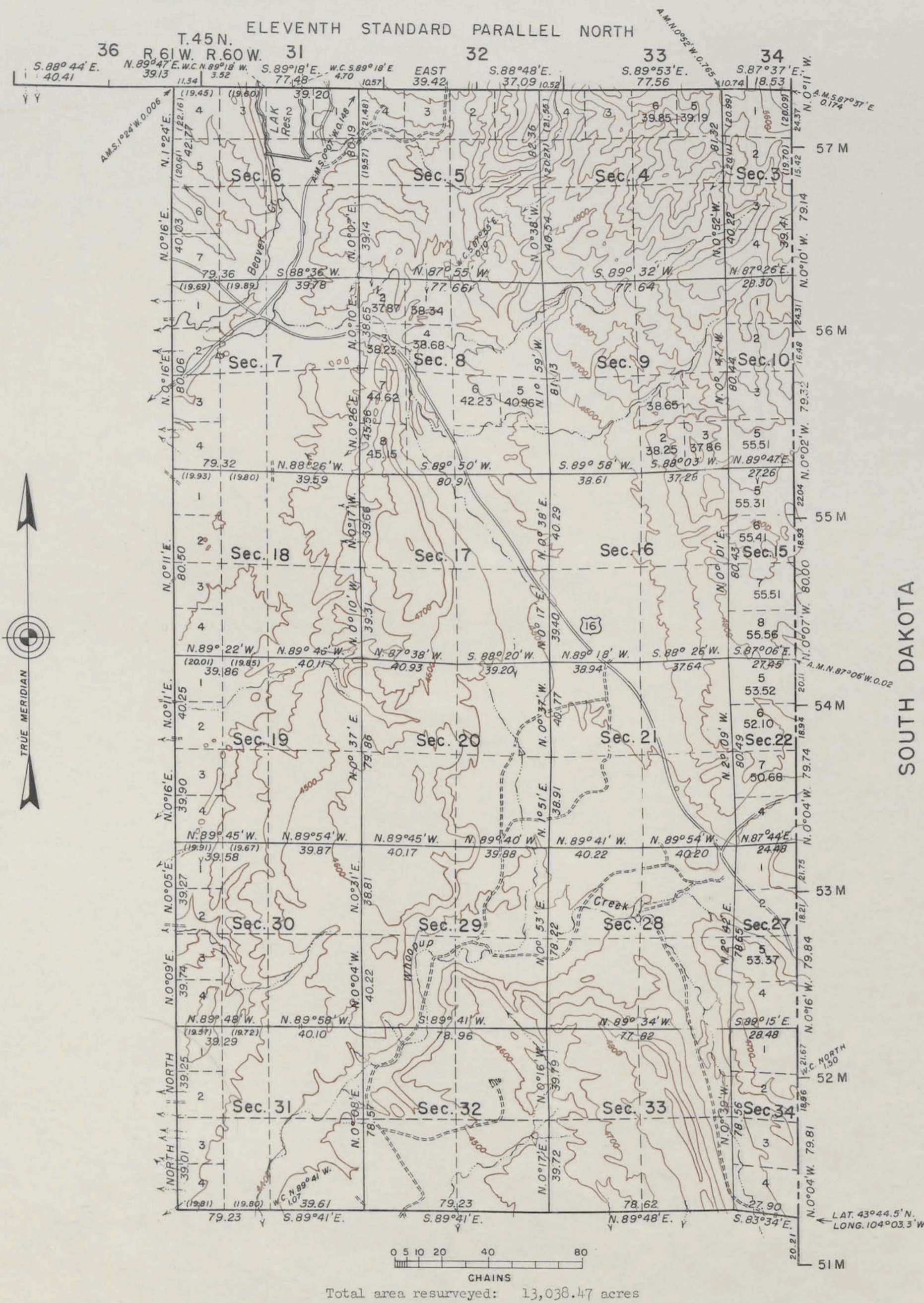
This plat is strictly conformable to the approved field notes, and the survey, having been correctly executed in accordance with the requirements of law and the regulations of this Bureau, is hereby accepted.

For the Director

Sonja S. Sparks
Chief Cadastral Surveyor for Wyoming



TOWNSHIP 44 NORTH, RANGE 60 WEST OF THE SIXTH PRINCIPAL MERIDIAN, WYOMING. DEPENDENT RESURVEY



This plat represents a resurvey of the 11th Standard Parallel through R. 60 W., and the east mile of R. 61 W., the West boundary and the subdivisional lines with ties to the East boundary of Wyoming of Township 44 North, Range 60 West of the Sixth Principal Meridian, Wyoming, designed to restore the corners in their original locations according to the best available evidence. The lottings and areas are as shown upon the plat approved August 3, 1882, excepting as shown hereon.

The South boundary of the township was resurveyed by C. E. Bilbray concurrently under this same group. History of previous surveys is set forth in the field note record.

Topography within the sections is based upon Clifton and Fanny Peak quadrangles of the U. S. G. S., coordinated to section line control with 100-foot contour interval.

As shown hereon, the 11th Standard Parallel, the West boundary, and the subdivisional lines were resurveyed by Clarence E. Bilbray October 14 to November 22, 1957, under special instructions dated August 29, 1957 for Group 253, Wyoming.

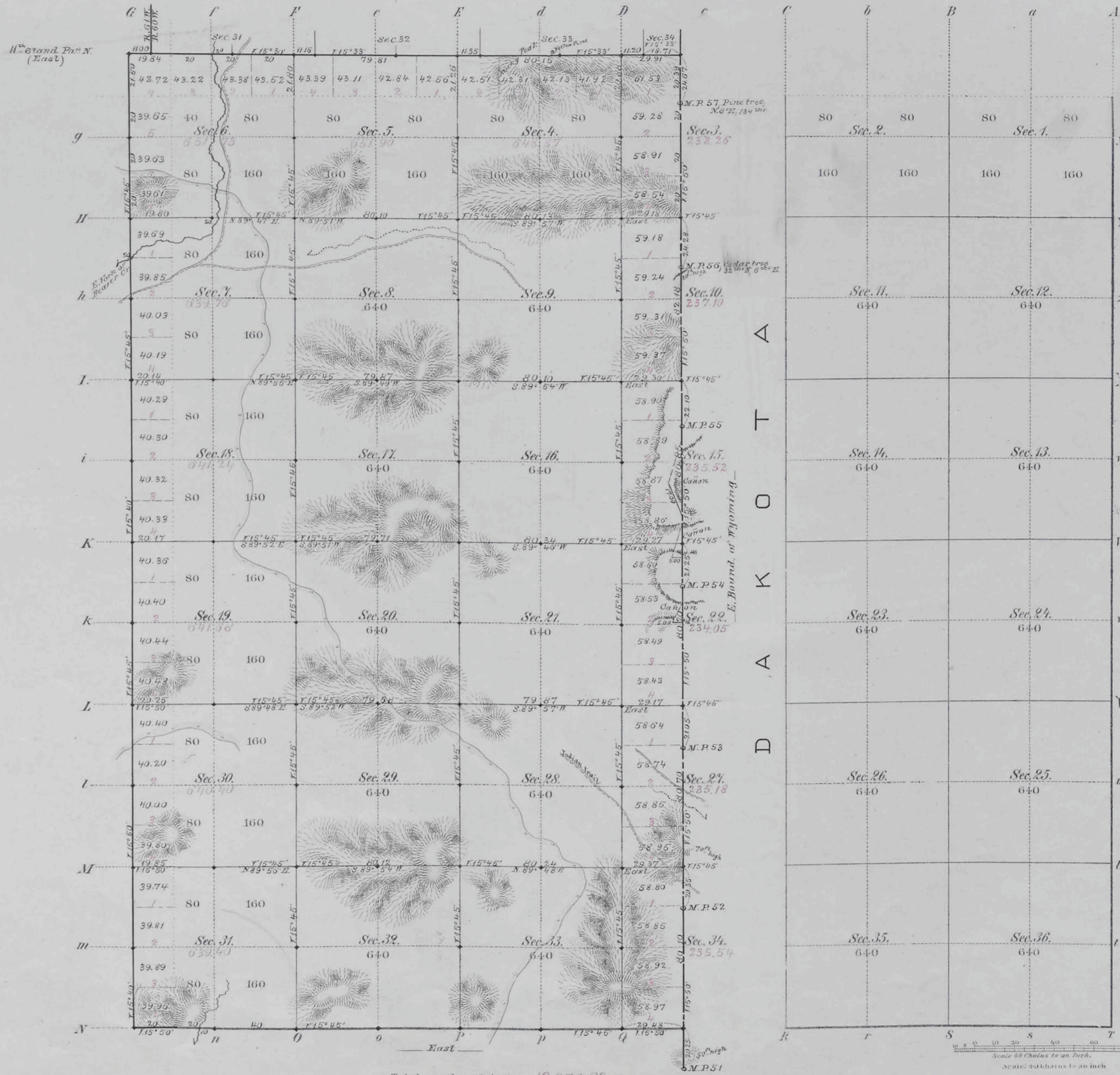
UNITED STATES DEPARTMENT OF THE INTERIOR
BUREAU OF LAND MANAGEMENT
Washington, D.C. March 18, 1959

This plat is strictly conformable to the approved field notes, and the survey, having been correctly executed in accordance with the requirements of law and the regulations of this Bureau, is hereby accepted.

For the Director

Earl G. Harrington
Cadastral Engineering Staff Officer

TOWNSHIP No 44 NORTH. RANGE No 60 WEST of the 6th Principal MERIDIAN.



Total number of Acres. 12,970.63

Surveys Designated	By Whom Surveyed	Date of Contract	Amount of Survey M ² Ch ² Lt	When Surveyed	Magnetic Declination
S ^W Township lines	Hanson & Carson	May 6, 1881	9 30 98	June 8 & 9, 1881	15° 45' East
Subdivisions	Hanson & Carson	" " " "	34 70 60	Sept. 20-24, 1881	15° 45' " "
Connections	" " " "	" " " "	1 02 74	" " " "	" " " "
11 th Stand. P.M.	" " " "	" " " "	3 29 71	May 18, 1881	" " " "
E.B. of Wyom.	Rollie J. Reeves	April 6, 1877	6 4 42	June 21-23, 1877	" " " "

The above Map of Township No 44 North of Range No 60 West of the Sixth Principal Meridian Wyoming Territory is strictly conformable to the field notes of the survey thereof on file in this office, which have been examined and approved

Surveyor General's Office. *Edw. C. David*
Cheyenne Wyoming
August 3rd 1882

4922

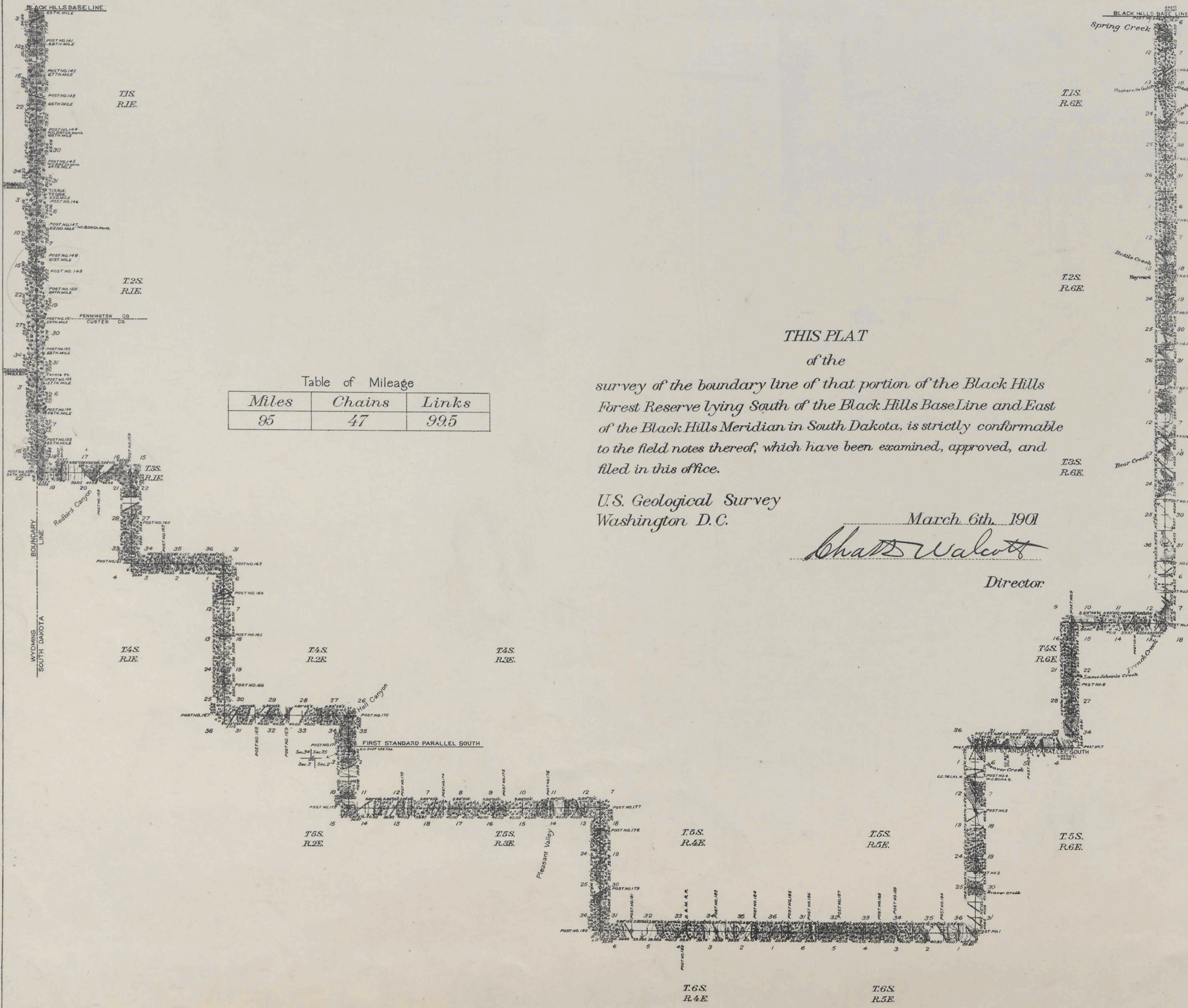


Table of Mileage

Miles	Chains	Links
95	47	99.5

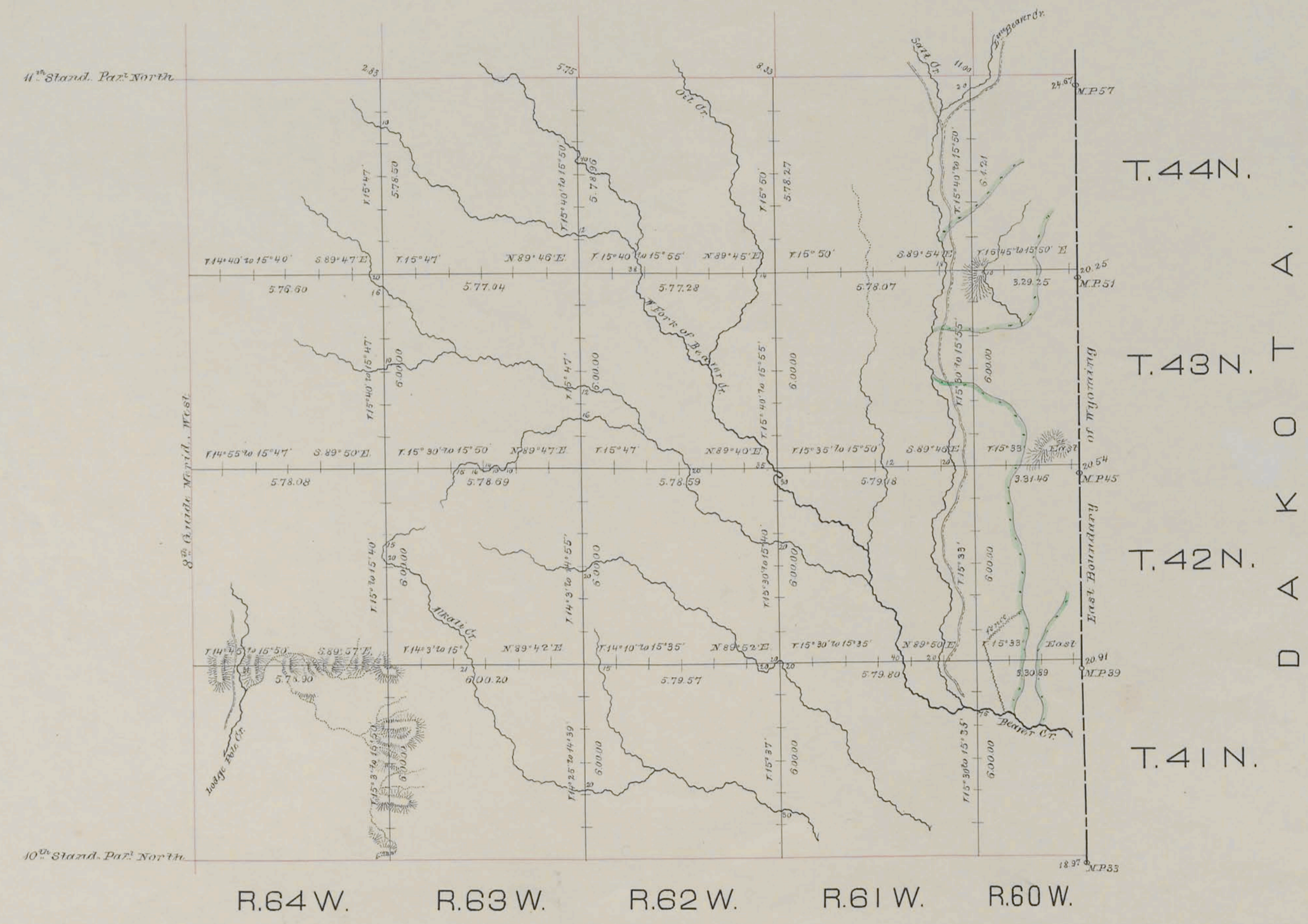
THIS PLAT
of the
survey of the boundary line of that portion of the Black Hills
Forest Reserve lying South of the Black Hills Base Line and East
of the Black Hills Meridian in South Dakota, is strictly conformable
to the field notes thereof, which have been examined, approved, and
filed in this office.

U.S. Geological Survey
Washington D. C.

March 6th, 1901
Charles Walcott
Director

EXTERIOR LINES.

Scale, 3 miles to an inch, Mag. Lat. East.



I hereby certify that the above diagram of the exterior lines of Townships 41 to 44 N. incl. Ranges 60 to 64 and West of the 6th Principal Meridian, Wyoming Terr. is strictly conformable to the field notes of the survey thereof on file in this Office, which have been examined and approved.
 Surveyor General's Office,
 Cheyenne, Wyo. August 12th 1882.

Edw. C. David
 Surveyor General

Surveys Designated	By whom surveyed	Date of Contract	Amount of Surveys			When surveyed
			secs	chs.	sq. m.	
Exterior Lines	Wason & Tolmear	May 6, 1881	177	70	54	May 16 - June 9, 1881
Connections	"	"	1	9	61	"

MAP

of the

Resurvey, Remarking & Reestablishing

of the

South one hundred and four miles of the

WEST BOUNDARY OF SOUTH DAKOTA.

(Omitting the 57th to 81st Miles inclusive)

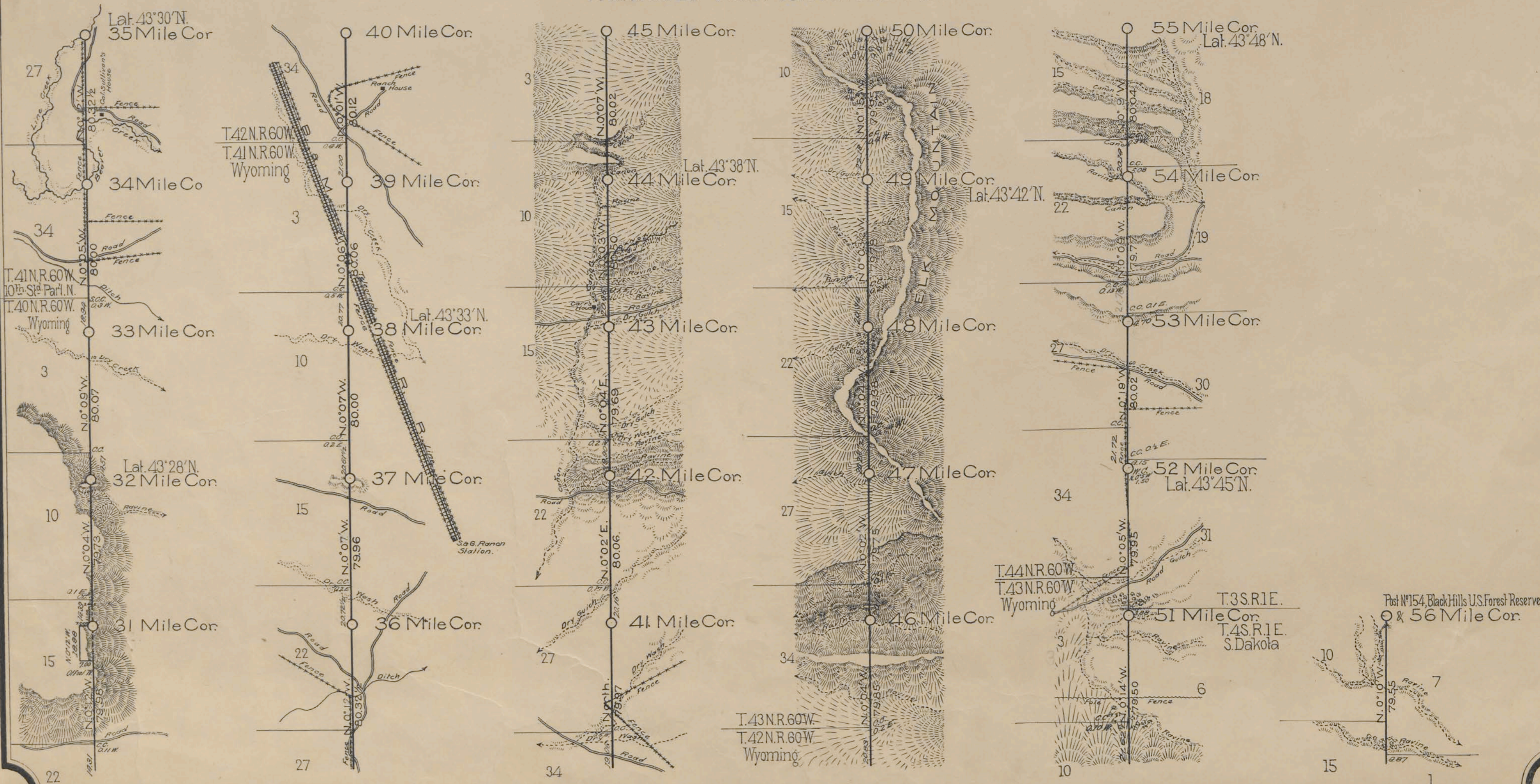
as surveyed by
Edward F. Stahle, U.S.D.S.

Sept. 3, 1904 to June 22, 1905

under Contract from the Hon. Actg. Commissioner G.L.O. dated July 1, 1904
From the 30th Mile Post to the 56th Mile Post.

RECEIVED S. G. O.
MAR 5 1906
CHEYENNE, WYO.

Sheet N^o 2
Scale: 40 chs. to 1 inch.



Note: See Sheet N^o 3 for certificate