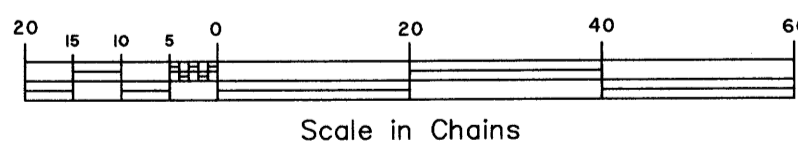
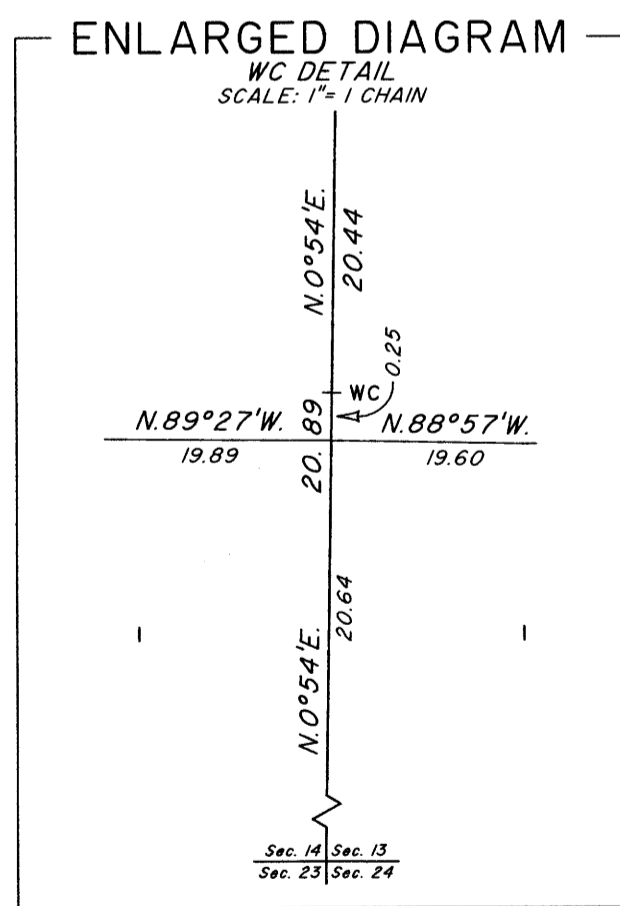
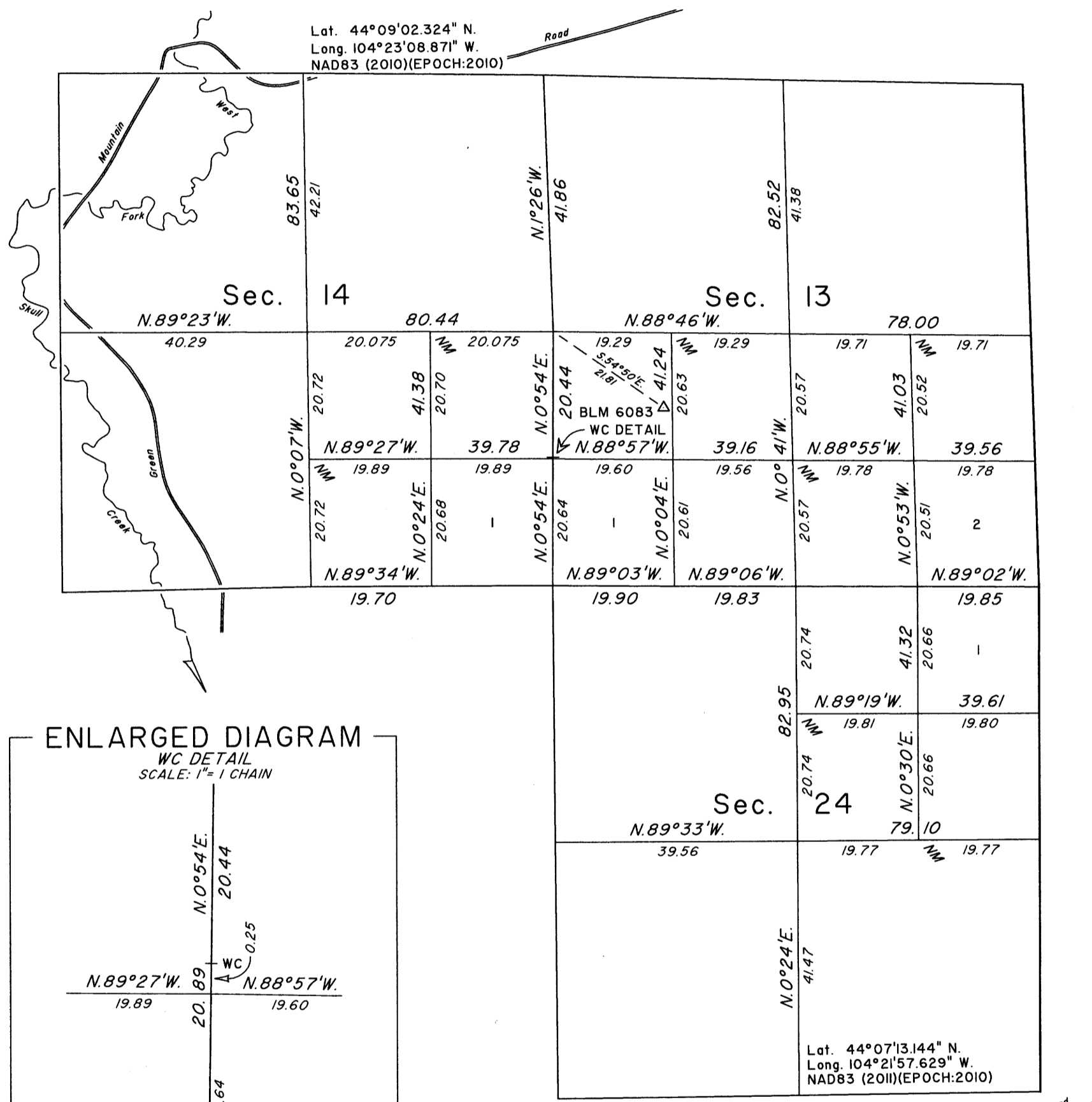
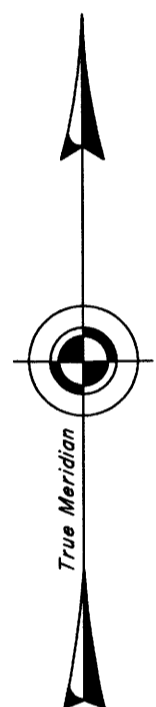


## T. 48 N., R. 63 W., Sixth Principal Meridian, Wyoming, Field Note Links

Plat Accession Number(s)	Year(s) of Survey	
		Township Subdivision Plats
8779	2018	<a href="https://www.wy.blm.gov/cadastral/countyplats/weston/fieldnotes/t48nr63w_gp993fn.pdf">https://www.wy.blm.gov/cadastral/countyplats/weston/fieldnotes/t48nr63w_gp993fn.pdf</a>
8166	1992-93	<a href="https://www.wy.blm.gov/cadastral/countyplats/weston/fieldnotes/t48nr63w_gp556fn.pdf">https://www.wy.blm.gov/cadastral/countyplats/weston/fieldnotes/t48nr63w_gp556fn.pdf</a>
1222	1881	<a href="https://www.wy.blm.gov/cadastral/countyplats/weston/fieldnotes/t48nr63w_c126fn.pdf">https://www.wy.blm.gov/cadastral/countyplats/weston/fieldnotes/t48nr63w_c126fn.pdf</a>
		Township Exterior Plats
1162	1881	<a href="https://www.wy.blm.gov/cadastral/countyplats/weston/fieldnotes/ext1162.pdf">https://www.wy.blm.gov/cadastral/countyplats/weston/fieldnotes/ext1162.pdf</a>
1162	1881	<a href="https://www.wy.blm.gov/cadastral/countyplats/weston/fieldnotes/retext1162.pdf">https://www.wy.blm.gov/cadastral/countyplats/weston/fieldnotes/retext1162.pdf</a>

TOWNSHIP 48 NORTH, RANGE 63 WEST, OF THE SIXTH PRINCIPAL MERIDIAN, WYOMING.

DEPENDENT RESURVEY AND SURVEY



A history of surveys is contained in the field notes.

This plat represents the dependent resurvey of portions of the subdivisional lines, designed to restore the corners in their true original locations according to the best available evidence, and the survey of the subdivision of sections 13, 14 and 24, T. 48 N., R. 63 W., Sixth Principal Meridian, Wyoming.

The lotting and areas are as shown on the plat approved August 12, 1882, and the plat accepted September 29, 1997.

Survey executed by James E. Jacob, Cadastral Surveyor, beginning June 4, 2018, and completed July 24, 2018, pursuant to special instructions and assignment instructions dated May 15, 2018, for Group No. 993, Wyoming.

Notes:  
NM indicates corner not monumented.

Solid line not showing bearing and distance were dependently resurveyed by Michael E. Whitmore in 1992-93.

UNITED STATES DEPARTMENT OF THE INTERIOR  
BUREAU OF LAND MANAGEMENT

Cheyenne, Wyoming      March 25, 2020

This plat is strictly conformable to the approved field notes, and the survey, having been correctly executed in accordance with the requirements of law and the regulations of this Bureau, is hereby accepted.

For the Director

Sonja S. Sparks  
Chief Cadastral Surveyor for Wyoming

TOWNSHIP 48 NORTH, RANGE 63 WEST, OF THE SIXTH PRINCIPAL MERIDIAN, WYOMING.  
DEPENDENT RESURVEY



A history of surveys is contained in the field notes.

A portion of the Twelfth Standard Parallel North was dependently resurveyed by James D. Clafin and Ryan R. Lorenzen in 1992-93, during the dependent resurvey of T. 48 N., R. 64 W., executed concurrently under this same group.

This plat represents the dependent resurvey of a portion of the Twelfth Standard Parallel North, through R. 63 W., portions of the south, east and west boundaries, and a portion of the subdivision lines designed to restore the corners in their true original locations according to the best available evidence, and the subdivision of certain sections, T. 48 N., R. 63 W., Sixth Principal Meridian, Wyoming.

Certain modified lots and areas shown hereon pertain to Federal interest estate only. Except as indicated hereon, the lottings and areas are as shown on the plat approved August 12, 1882.

Survey executed by Michael E. Whitmore, Cadastral Surveyor, beginning May 12, 1992, and completed October 6, 1993, pursuant to Special Instructions dated April 1, 1992, for Group No. 556, Wyoming.

UNITED STATES DEPARTMENT OF THE INTERIOR  
BUREAU OF LAND MANAGEMENT

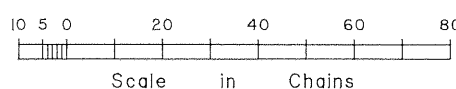
Cheyenne, Wyoming September 29, 1997

This plat is strictly conformable to the approved field notes, and the survey, having been correctly executed in accordance with the requirements of law and the regulations of this Bureau, is hereby accepted.

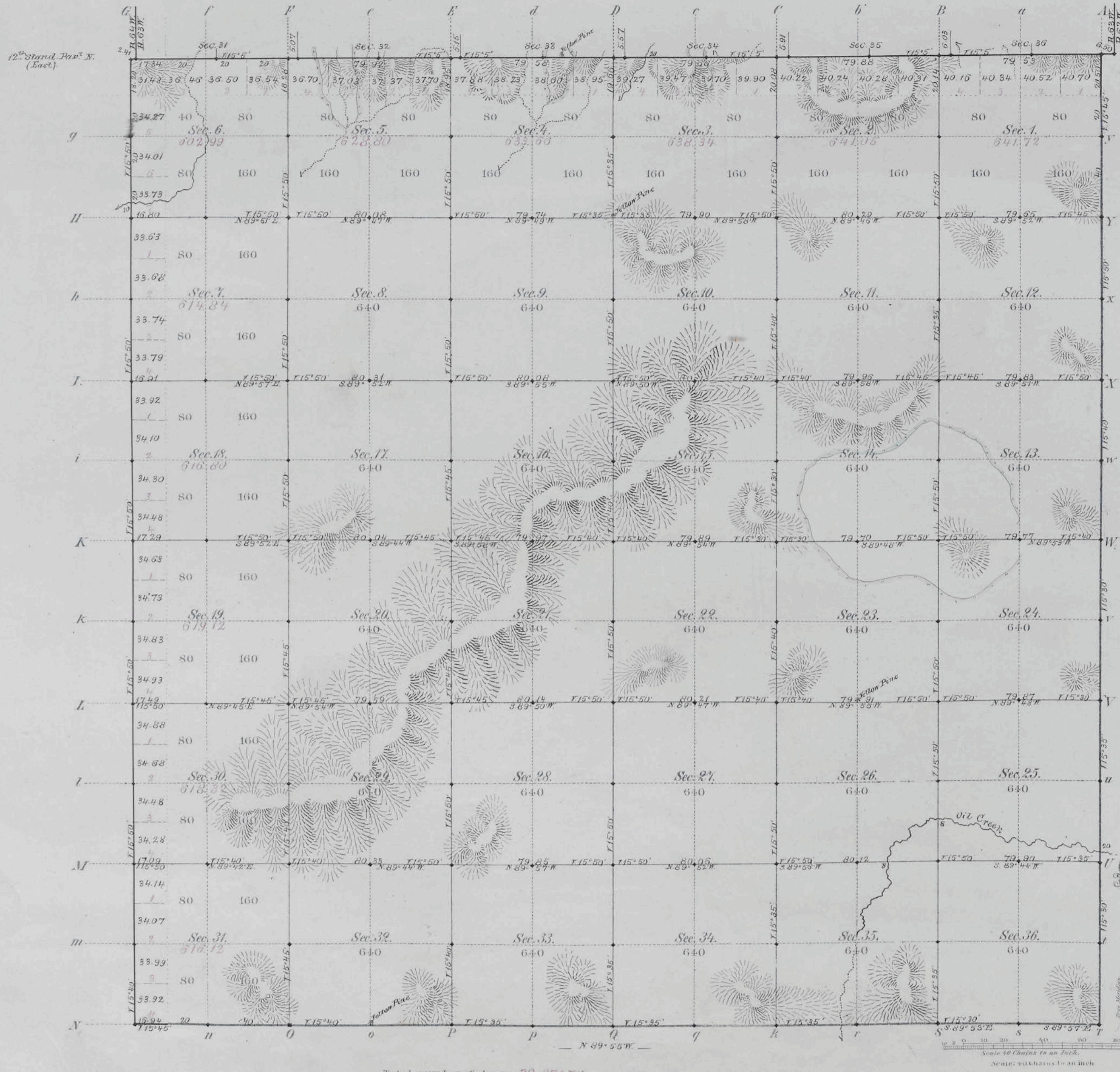
For the Director

*John P. Lee*  
Chief Cadastral Surveyor for Wyoming

Lat. 44°05'51.51"N.  
Long. 104°21'21.09"W.  
NAD 27



TOWNSHIP No 48 NORTH, RANGE No 63 WEST of the 6th Principal MERIDIAN.



Total number of acres, 22,871.76

Survey Designated	By Whom Surveyed	Date of Contract	Amount of Survey M <sup>2</sup> Ch <sup>2</sup> L <sup>2</sup>	When Surveyed	Magnetic Deviation
E.S. & W. Township lines	Manson & Carson	May 6, 1881	17 75 04	June 16, 22 & 29, 1881	15° 40' East
Subdivisions	Manson & Patterson	" " "	69 62 4	Novemb. 1-8, 1881	15° 50' "
Connections	" " "	" " "	27 73	" " "	" " "
12th Stand. Par. N. (East)	Manson & Carson	May 6 <sup>th</sup> 1881	5 75 91	May 23 & 24, 1881	" " "

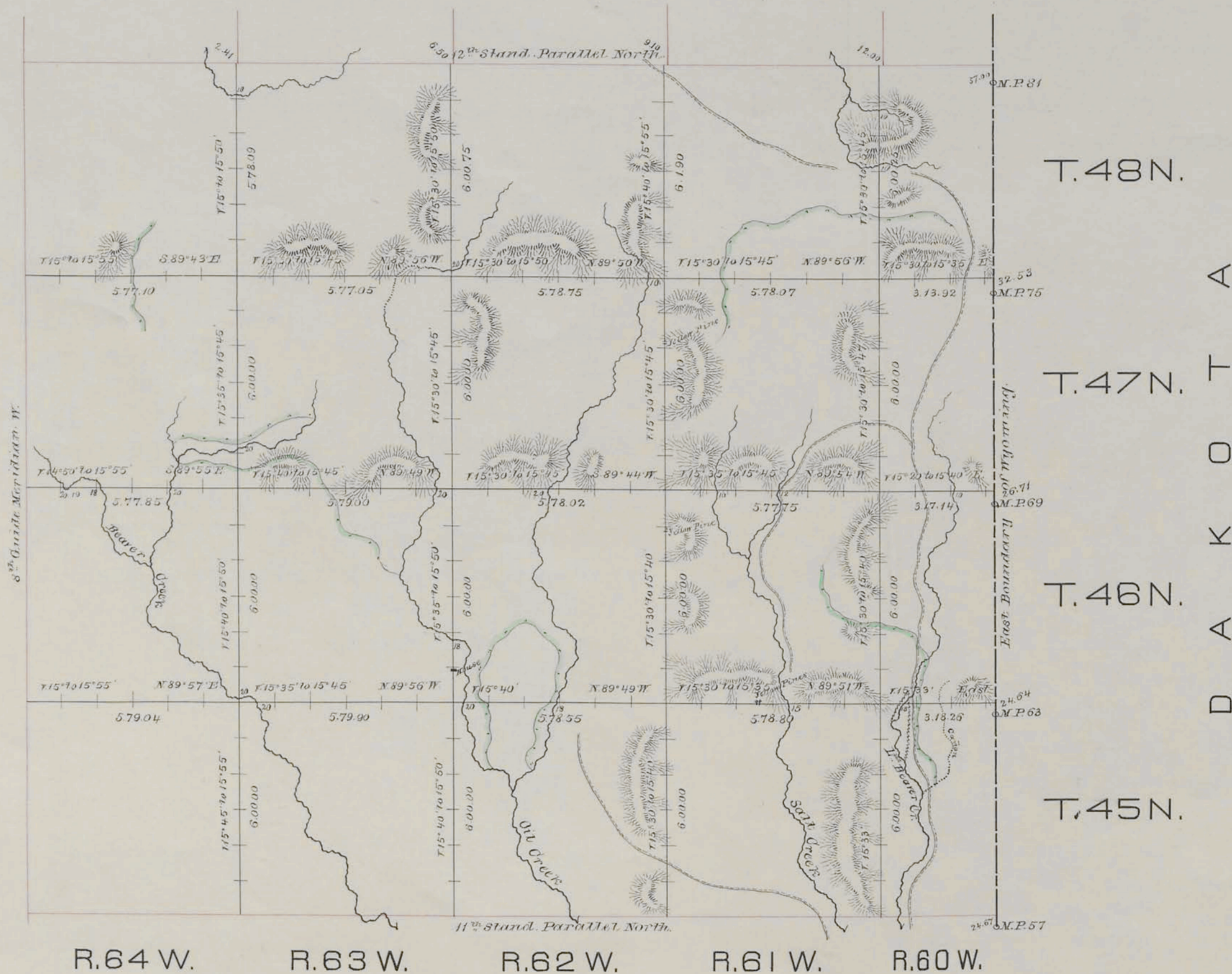
The above Map of Township No 48 North of Range No 63 West of the Sixth Principal Meridian Wyoming Territory is strictly conformable to the field notes of the survey thereof on file in this Office, which have been examined and approved

Surveyor General's Office, *Edw. C. David* Gen'l.  
Cheyenne Wyoming  
August 12<sup>th</sup> 1882

Indexed

# EXTERIOR LINES.

Scale, 3 miles to an inch. Magn. Var. East. ~



T.48N.  
A  
T  
O  
K  
D  
A  
T  
N.

Surveys Designated	By whom surveyed	Date of Contact	Amount of Surveys mils. Chs.	When Surveyed
Exterior Lines	Manson & Carson	May 6 <sup>th</sup> 1881	177 50 12	May 27 to June 30, 1881
Connections	" " " "	" " " "	1 33 89	" " " "

I hereby certify that the above diagram of the exterior lines of Townships 45 to 48 N. incl. Ranges 60 to 64 incl. West of the 6<sup>th</sup> Principal Meridian, Wyoming Territory is strictly conformable to the field notes of the survey thereof on file in this Office, which have been examined and approved.

Surveyor General's Office,  
Cheyenne, Wyo. August 3<sup>rd</sup> 1882.

*Edw. C. David*  
Surveyor General.