

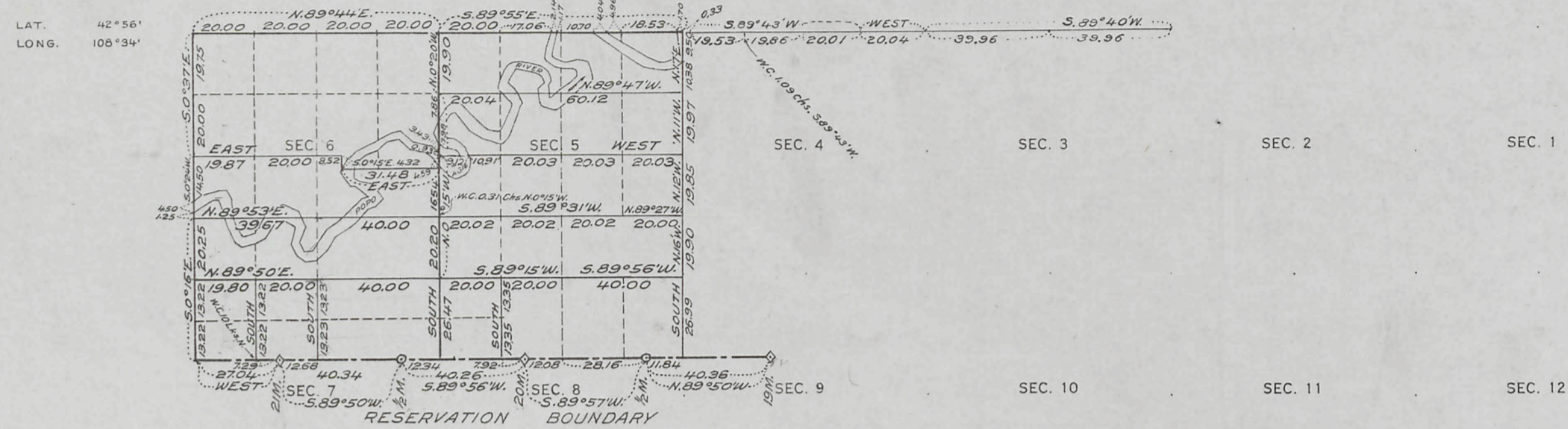
## T. 2 S., R. 3 E., Wind River Meridian, Wyoming, Field Note Links

Plat Accession Number(s)	Year(s) of Survey	
		Township Subdivision Plats
5022	1914	<a href="https://www.wy.blm.gov/cadastral/countyplats/windriver/fieldnotes/t2sr3e_glofn_1917.pdf">https://www.wy.blm.gov/cadastral/countyplats/windriver/fieldnotes/t2sr3e_glofn_1917.pdf</a>
5022	1914	<a href="https://www.wy.blm.gov/cadastral/countyplats/windriver/fieldnotes/t2sr3e_bnd.pdf">https://www.wy.blm.gov/cadastral/countyplats/windriver/fieldnotes/t2sr3e_bnd.pdf</a>
5021	1908	<a href="https://www.wy.blm.gov/cadastral/countyplats/windriver/fieldnotes/t2sr3e_c332fn.pdf">https://www.wy.blm.gov/cadastral/countyplats/windriver/fieldnotes/t2sr3e_c332fn.pdf</a>
5020	1905-06	<a href="https://www.wy.blm.gov/cadastral/countyplats/windriver/fieldnotes/t2sr3e_c306fn.pdf">https://www.wy.blm.gov/cadastral/countyplats/windriver/fieldnotes/t2sr3e_c306fn.pdf</a>
5017	1905	<a href="https://www.wy.blm.gov/cadastral/countyplats/windriver/fieldnotes/t2sr3e_c301fn.pdf">https://www.wy.blm.gov/cadastral/countyplats/windriver/fieldnotes/t2sr3e_c301fn.pdf</a>
5016	1875	<a href="https://www.wy.blm.gov/cadastral/countyplats/windriver/fieldnotes/t2sr3e_glofn.pdf">https://www.wy.blm.gov/cadastral/countyplats/windriver/fieldnotes/t2sr3e_glofn.pdf</a>
		Township Exterior Plats
5157	1905	<a href="https://www.wy.blm.gov/cadastral/countyplats/windriver/fieldnotes/ext0103.pdf">https://www.wy.blm.gov/cadastral/countyplats/windriver/fieldnotes/ext0103.pdf</a>
4977	1875	<a href="https://www.wy.blm.gov/cadastral/countyplats/windriver/fieldnotes/ext0006.pdf">https://www.wy.blm.gov/cadastral/countyplats/windriver/fieldnotes/ext0006.pdf</a>
4969	1887	<a href="https://www.wy.blm.gov/cadastral/countyplats/windriver/fieldnotes/ext0002.pdf">https://www.wy.blm.gov/cadastral/countyplats/windriver/fieldnotes/ext0002.pdf</a>

RECEIVED S. G. O.  
APR 10 1917.  
CHEYENNE, WYO.

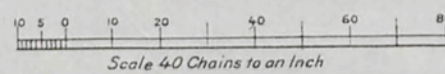
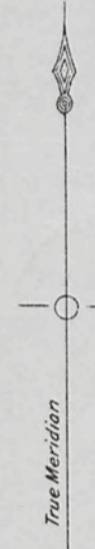
5022

RESURVEYS IN TOWNSHIP NO. 2 SOUTH RANGE NO. 3 EAST OF THE WIND RIVER MERIDIAN, WYOMING.  
WIND RIVER OR SHOSHONE INDIAN RESERVATION  
SUPPLEMENTAL PLAT



NORTH

NORTH



SURVEYS DESIGNATED	BY WHOM SURVEYED	TITLE	WHEN SURVEYED
STANDARD LINES	FREDERICK C. MILLER	TRANSITMAN	MAY 11, 1914 TO AUG. 20, 1914.
TOWNSHIP	R. A. FARMER	U.S. SURVEYOR	AUG. 29, 1914 TO SEPT. 1, 1914.
SUBDIVISION	F. C. MILLER	TRANSITMAN	SEPT. 1, 1914.
MEANDER	R. A. FARMER	U.S. SURVEYOR	AUG. 28, 1914.
BOUNDARY	F. C. MILLER	TRANSITMAN	
A. F. DUNNINGTON, Topographer in charge. Instructions - May 28, 1913.			

FOR  
S.M.  
C.F.W.

This plat represents a resurvey made for the purpose of restoring and re-establishing corners for Indian allotment locations.

THE ABOVE MAP OF TOWNSHIP NO. 2 SOUTH RANGE NO. 3 EAST OF THE WIND RIVER MERIDIAN, WYOMING, IS STRICTLY CONFORMABLE TO THE FIELD NOTES OF THE SURVEY THEREOF ON FILE IN THIS OFFICE, WHICH HAVE BEEN EXAMINED AND APPROVED.  
D.B.G.

GENERAL LAND OFFICE  
WASHINGTON, D. C., MARCH 8, 1917.

*[Signature]*  
Commissioner

Approved and accepted by Comm. Mar. 8, 1917.  
Trip. copy transmitted to Landor L. O. April 12, 1917.

25-3E

19-7.





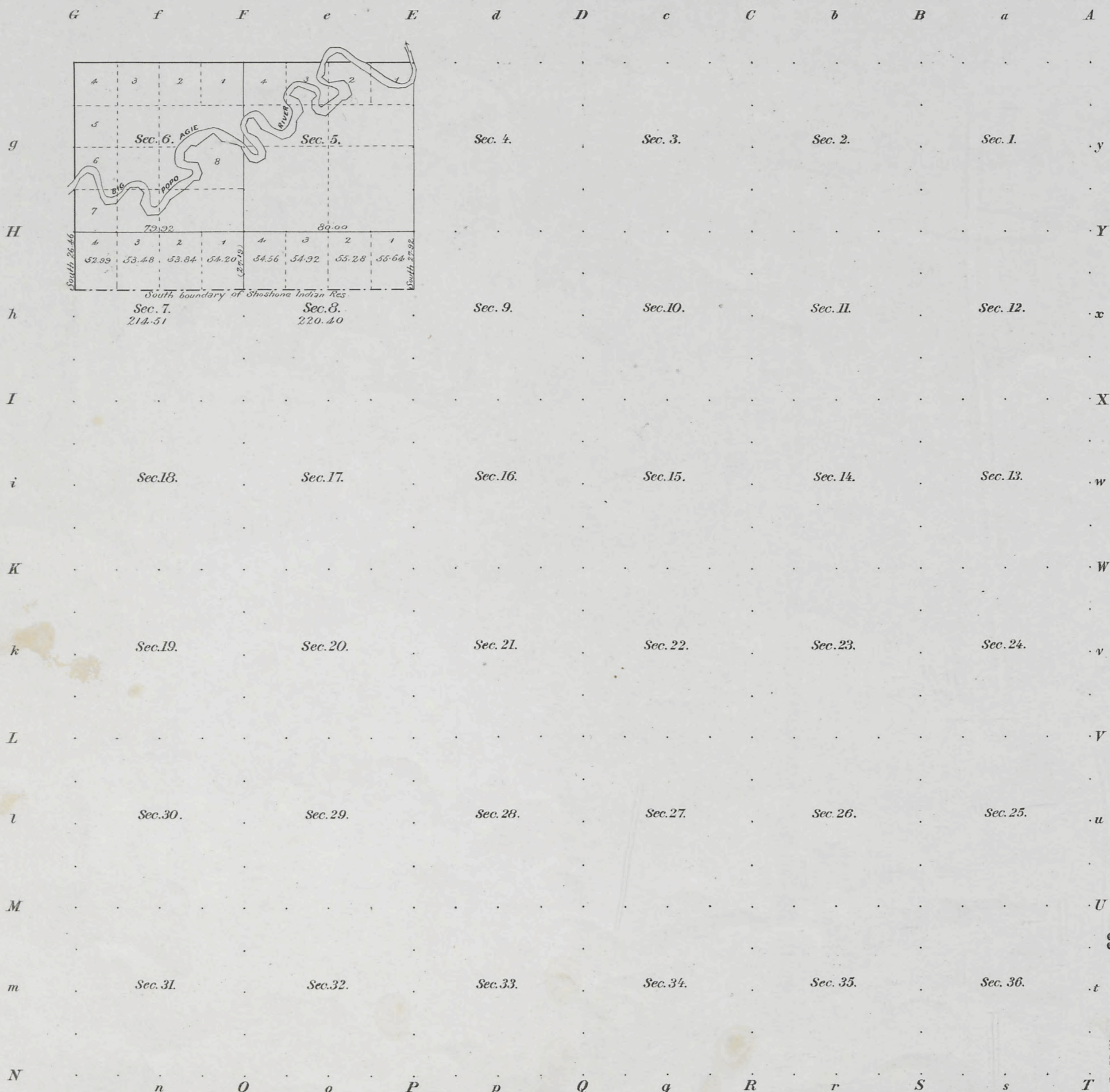
RECEIVED S. G. O.  
JUL 31 1906  
CHEYENNE, WYO.

P.F.E.  
E.V. F.J.M.  
O.K.

62-A

Supplemental Plat

of Township N<sup>o</sup> 2 South Range N<sup>o</sup> 3 East of the Wind River Meridian, Wyoming



Meanders of											
Posts	Courses	Ch <sup>2</sup> Lk <sup>2</sup>	Posts	Courses	Ch <sup>2</sup> Lk <sup>2</sup>	Posts	Courses	Ch <sup>2</sup> Lk <sup>2</sup>	Posts	Courses	Ch <sup>2</sup> Lk <sup>2</sup>

Department of the Interior,  
General Land Office,  
Washington, D.C., July 11<sup>th</sup> 1906.

*The above supplemental plat exhibiting the protracted areas of Secs 7 & 8 T. 2 S., R. 3 E. has been prepared in strict conformity to the field notes of accepted surveys on file in this office and is hereby approved.*

*J. J. Paddock*  
Acting Commissioner

Total number of Acres

Surveys Designated	By Whom Surveyed	Date of Contract	Amount of Survey Acres	When Surveyed
Township lines				
Subdivisions				

*The above Map of Township N<sup>o</sup> 2 of Range N<sup>o</sup> 3 East of the Wind River Meridian is strictly conformable to the field notes of the survey thereof on file in this Office, which have been examined and approved.*

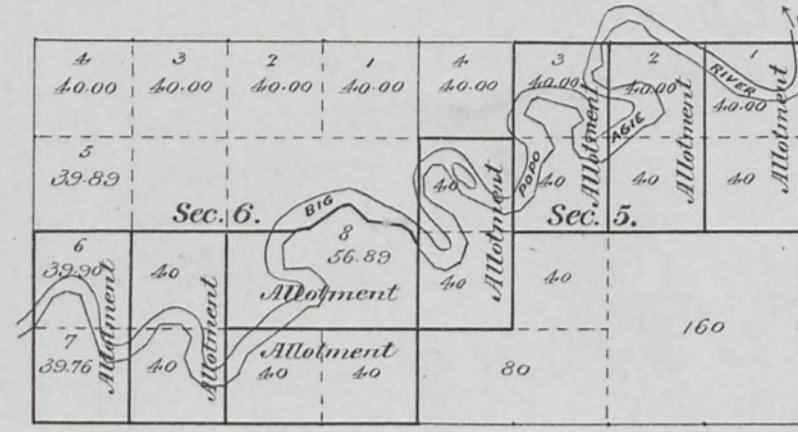
Surveyor General's Office }  
Sur. Gen.

5018

Supplemental Plat

Township N<sup>o</sup> 2 South Range N<sup>o</sup> 3 East of the Wind River Meridian, Wyoming

G f F e E d D c C b B a A



g	Sec. 1.	Sec. 2.	Sec. 3.	Sec. 4.	h	Sec. 7.	Sec. 8.	Sec. 9.	Sec. 10.	Sec. 11.	Sec. 12.	i	Sec. 13.	Sec. 14.	Sec. 15.	Sec. 16.	Sec. 17.	Sec. 18.	k	Sec. 19.	Sec. 20.	Sec. 21.	Sec. 22.	Sec. 23.	Sec. 24.	l	Sec. 25.	Sec. 26.	Sec. 27.	Sec. 28.	Sec. 29.	Sec. 30.	m	Sec. 31.	Sec. 32.	Sec. 33.	Sec. 34.	Sec. 35.	Sec. 36.	n	O	O	P	P	Q	Q	R	R	S	S	T	T
	.y	.	.	.		.	.x	.	.	.	.		.	.	.w	.	.	.		.	.	.	.v	.	.		.	.	.	.u	.	.		.	.	.	.	.	.		.t	.	.	.	.	.	.	.	.	.		

Meanders of									
Posts	Courses	Ch <sup>2</sup> Lk <sup>2</sup>	Posts	Courses	Ch <sup>2</sup> Lk <sup>2</sup>	Posts	Courses	Ch <sup>2</sup> Lk <sup>2</sup>	Posts

Department of the Interior,  
General Land Office,  
Washington, D.C., July 11<sup>th</sup> 1906.  
The above supplemental plat of T. 2 S., R. 3 E., exhibits the segregation of approved Indian allotments the descriptions of which are not in conformity with the supplemental plat approved May 13, 1906.  
*J. S. Ballack*  
Acting Commissioner

The above Map of Township N<sup>o</sup> 2 South of Range N<sup>o</sup> 3 East of the Wind River Meridian is shown conformable to the field notes of the survey thereof on file in this Office, which have been examined and approved.  
Surveyor General's Office, } Sur. Gen.

Surveys Designated	By Whom Surveyed	Date of Contract	Amount of Survey Ac. Ch. <sup>2</sup> Lk. <sup>2</sup>	When Surveyed	Total number of Acres
Township lines					
Subdivisions					

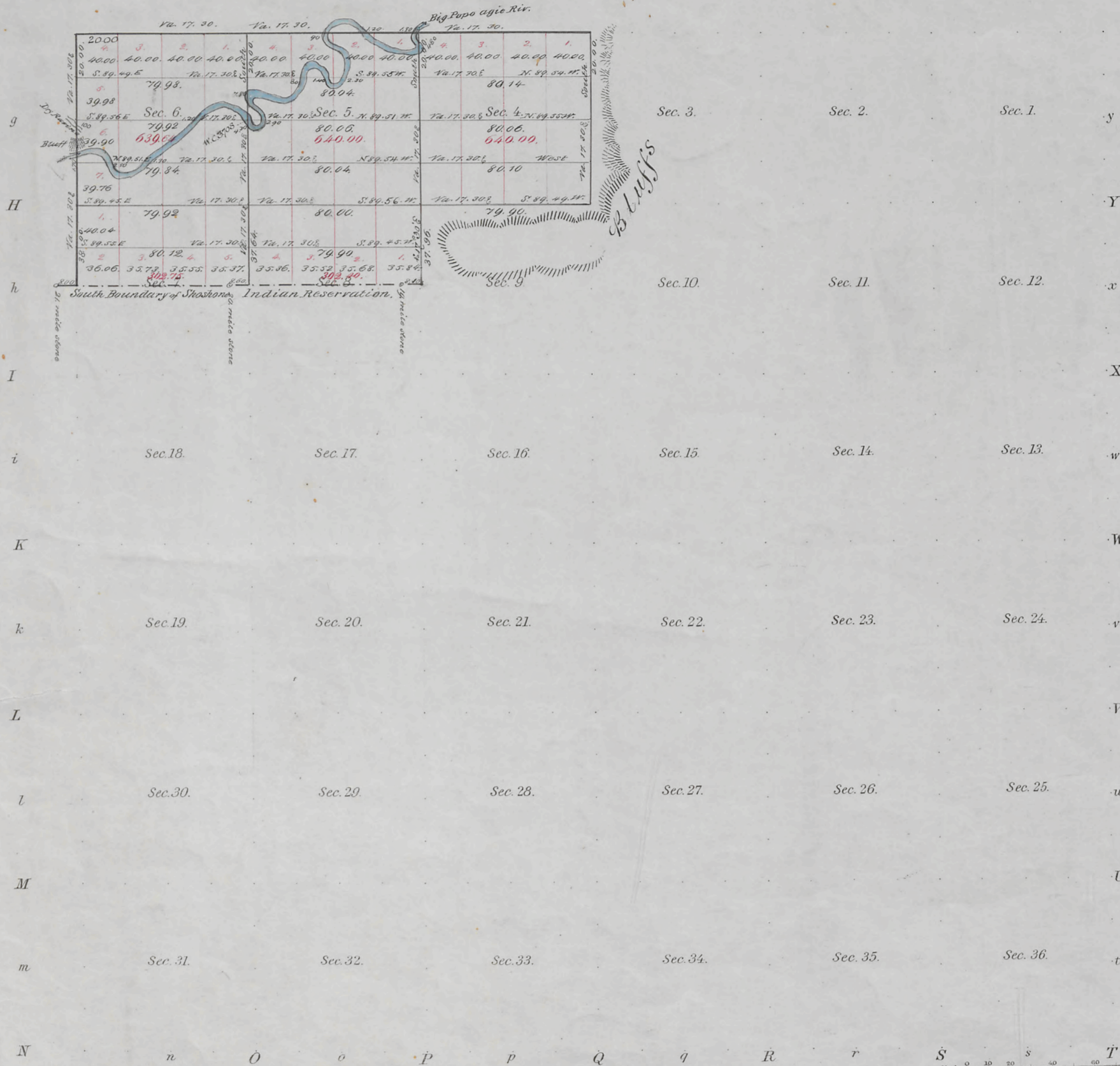


Triplicate

5016

TOWNSHIP N° 2. South RANGE N° 3. East Wind River MERIDIAN

G f F e E d D c C b B a A



Meanders of							
Posts	Courses	Ch <sup>2</sup> Lk <sup>2</sup>	Posts	Courses	Ch <sup>2</sup> Lk <sup>2</sup>	Posts	Courses

Total number of Acres. 2524.79.

Surveys Designated	By Whom Surveyed	Date of Contract	Amount of Surveys	When Surveyed
Township lines	James H. Miller	Oct 2nd 1874	M. Ch <sup>2</sup> Lk <sup>2</sup>	Sept. 1875
Subdivisions			18 : 12 : 52.	

The above Map of Township N° 2. Sec 1. of Range N° 3. E. Wind River Meridian Wyoming Territory is strictly conformable to the field notes of the survey thereof on file in this Office which have been examined and approved.  
 General Land Office  
 Surveyor General's Office  
 Washington D. C. Dec. 28 1875  
 J. Duran  
 Surveyor General  
 Commissioner



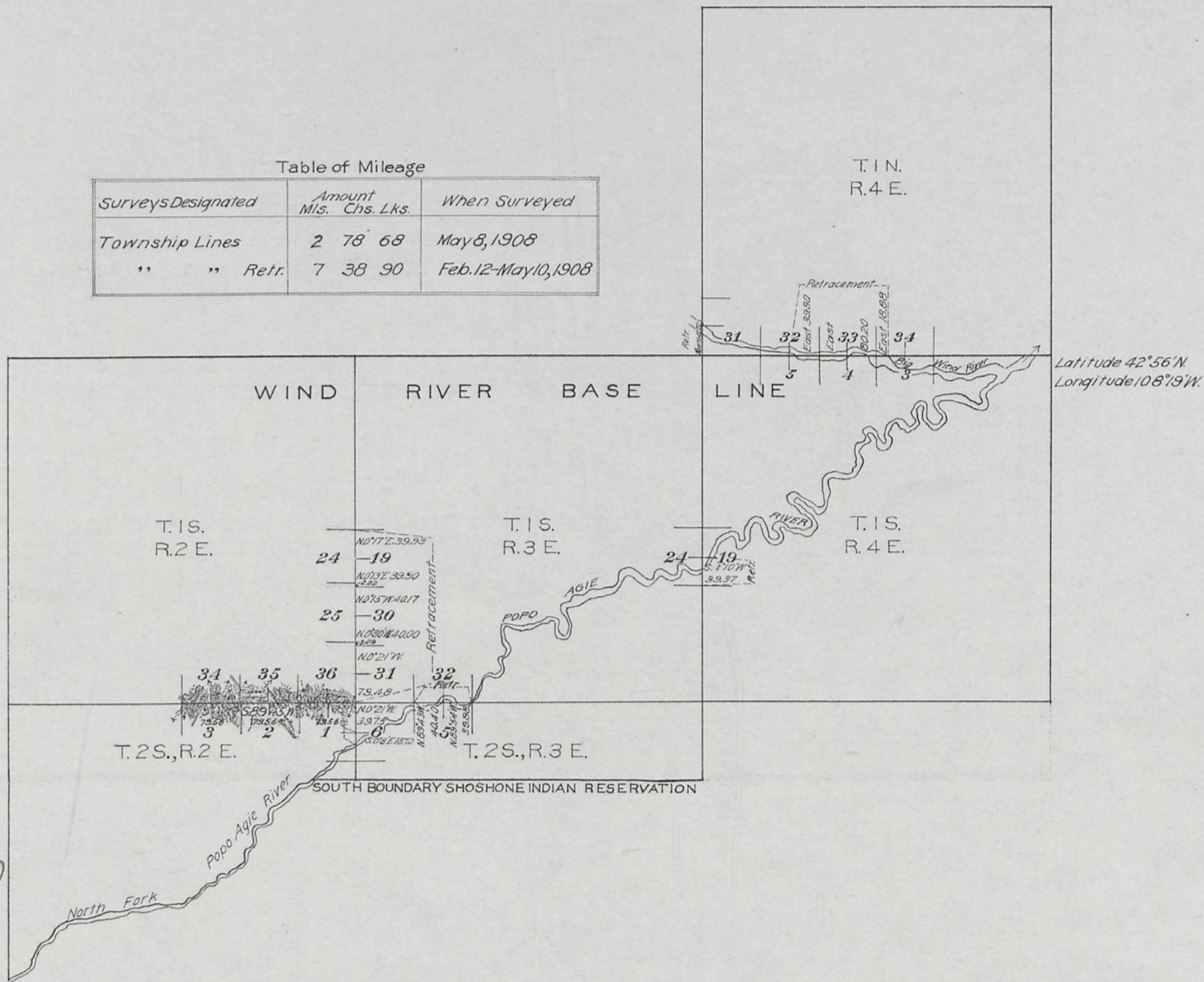
# TOWNSHIP EXTERIORS

Scale: 1 inch to 160 chains

Table of Mileage		
Surveys Designated	Amount Mis. Chs. Lks.	When Surveyed
Township Lines	2 78 68	May 8, 1908
" " Retr.	7 38 90	Feb. 12-May 10, 1908

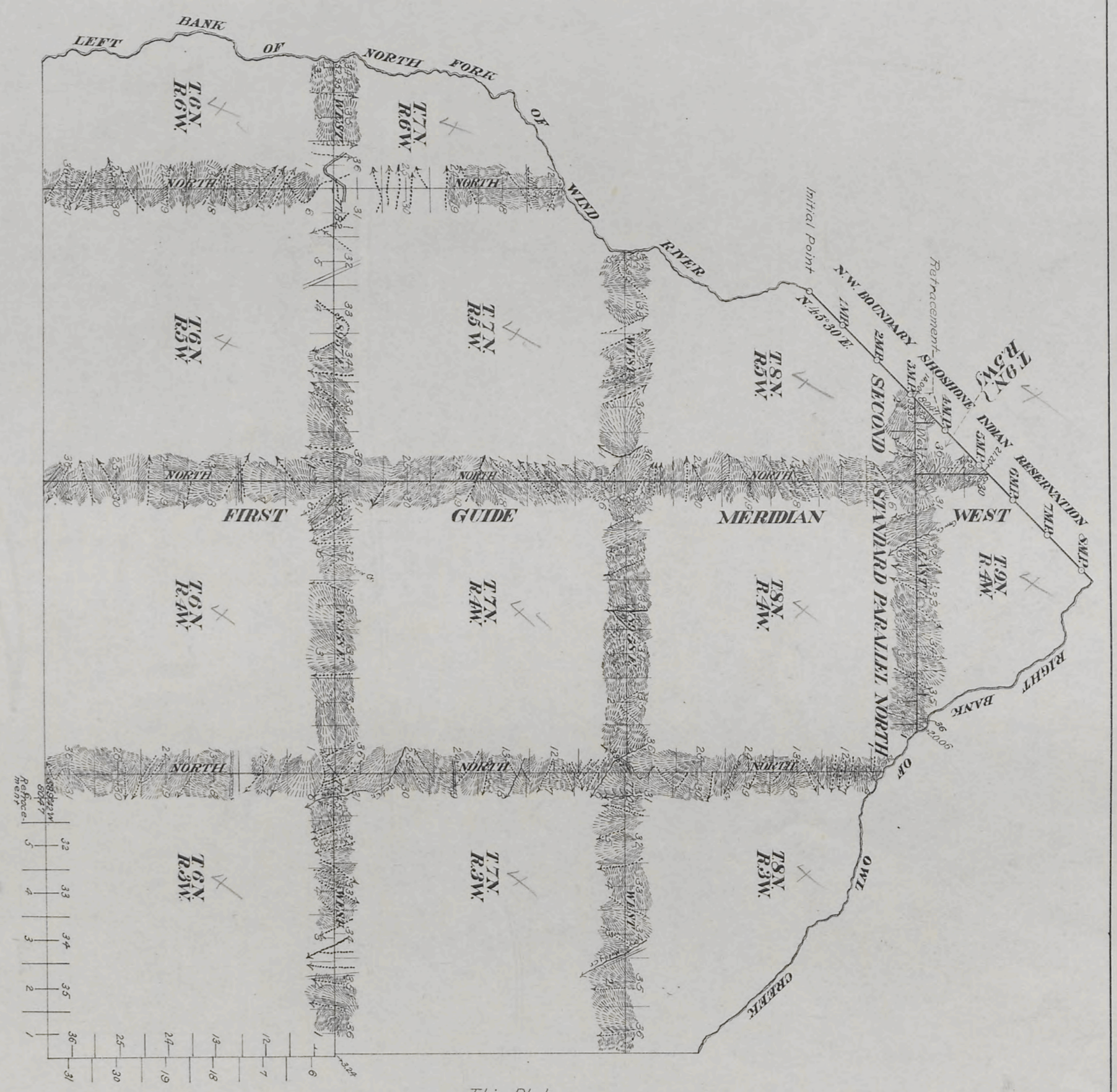
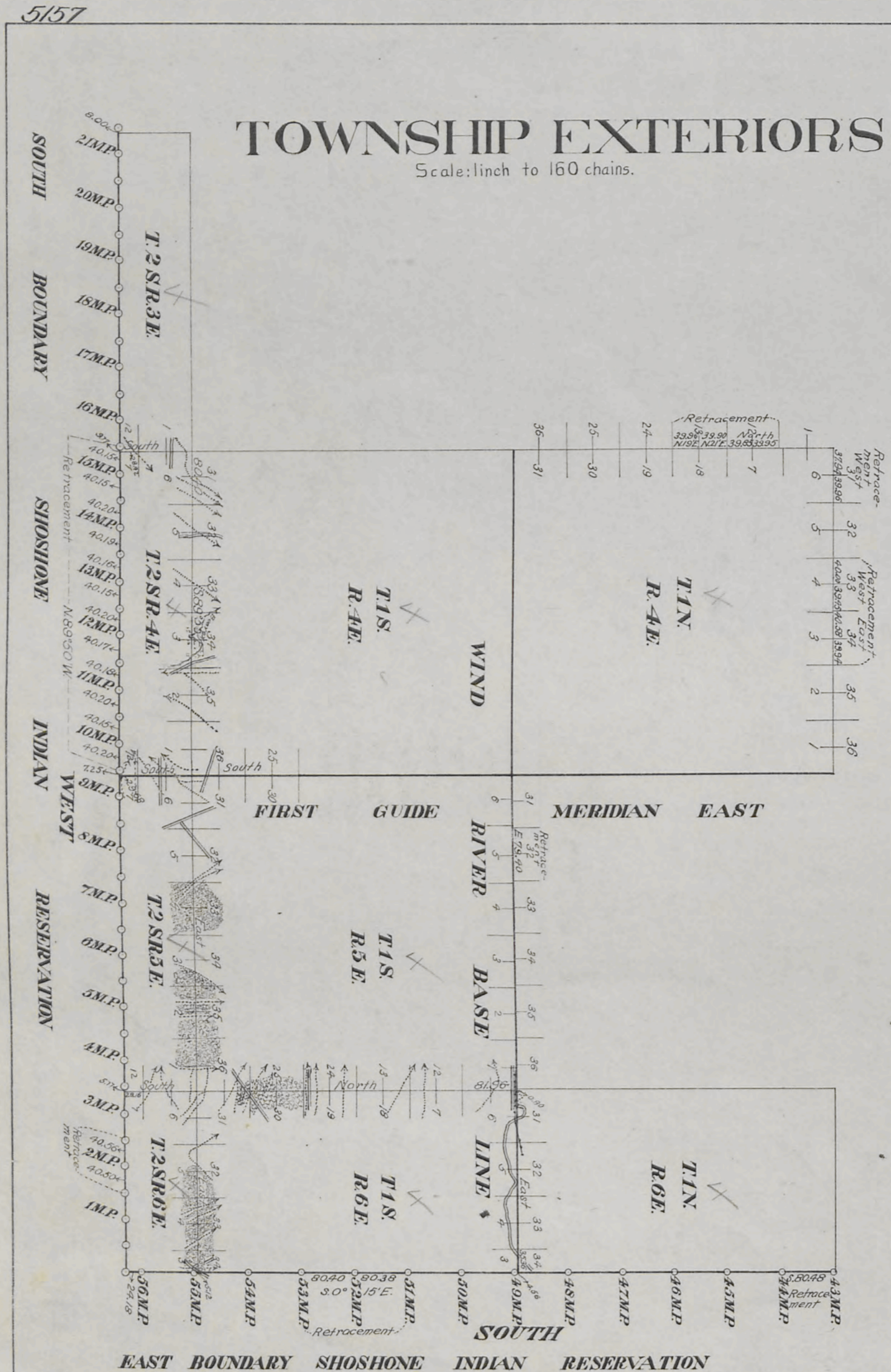
This Plat  
of  
A part of the South Boundary of T. 1 S., R. 2 E.,  
the Retracement of a part of  
The South Boundary of T. 1 S., R. 3 E. and T. 1 N., R. 4 E.  
The West Boundary of T. 1 N., R. 4 E., Ts. 1 S., Rs. 3 and 4 E.  
and T. 2 S., R. 3 E. of the  
Wind River Meridian  
Wyoming;  
is strictly conformable to the field notes of the survey thereof  
by  
William S. Adams, USDS  
under his  
Contract No. 332,  
dated January 3, 1908,  
which have been examined, approved and filed in this office  
U.S. Surv. Gen'l's Office,  
Cheyenne, Wyoming,  
April 17, 1909.

*Stephen P. Johnson*  
U.S. Surv. Gen'l



Latitude 42° 56' N  
Longitude 108° 19' W

Accepted by the Acting Commissioner of the  
General Land Office, in the letter E July 20, 1909.



This Plat  
Of The Wind River Base Line through R.6E.; The First Guide Meridian East through Fractional Tps. 1 and 2 S.; the north and west boundaries of Tps. 2 S. Rs. 4 and 6 E.; the south and east boundaries of Tp. 1 S. R. 5 E.; The First Guide Meridian West through Tps. 6, 7, 8 and 9 N.; The Second Standard Parallel North through Rs. 4 and 5 W.; the north and west boundaries of Tps. 6 and 7 N., Rs. 3 and 5 W.; the north boundaries of Tps. 6 and 7 N., R. 4 W. and Tp. 6 N., R. 6 W.; the east boundary of Tp. 8 N., R. 4 W. and the retracement of portions of north and west boundaries of T. 1 N., R. 4 E.; the south boundary of T. 6 N., R. 3 W.; the Wind River Base Line and the south, east and north west boundaries of the Shoshone Indian Reservation, in Wyoming, is strictly conformable to the field notes of the same by,

Burnham and Adams, U.S. Deputy Surveyors,  
under their  
Contract No. 301, dated May 1, 1905,  
which have been examined, approved and filed in this office,  
U.S. Surveyor General's Office,  
Cheyenne, Wyoming, April 30, 1906.

*Alpheus P. Hanson*  
U.S. Surveyor General.

*This plat accepted by the Hon. Commissioner in letter "E", May 10, 1906.*

*Triplicate*

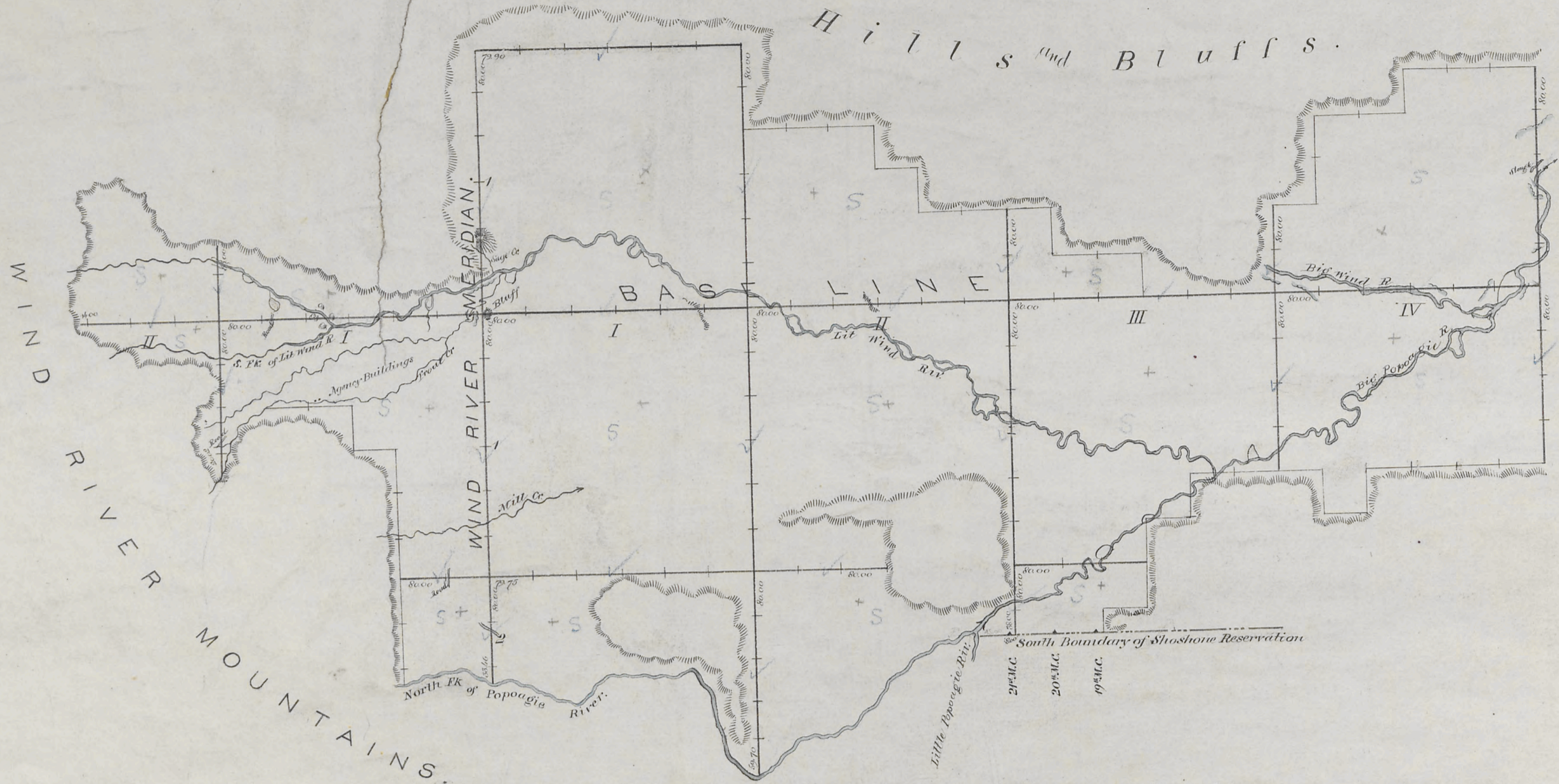


DIAGRAM  
of the  
EXTERIOR BOUNDARY LINES OF TOWNSHIPS  
IN THE SHOSHONE INDIAN RESERVATION  
WYOMING TERRITORY.

Department of the Interior  
General Land Office  
December 28<sup>th</sup> 1875

The above diagram of Exterior Boundary lines of Townships in the Shoshone Indian Reservation, in Wyoming Territory, is strictly conformable to the field notes on file in this Office, which have been examined and approved.

*J. S. Duran*  
Commissioner.

Surveyed by

James W. Miller

U.S. Surveyor.

Under contract with Hon. S.S. Burdett Commissioner  
of the General Land Office, bearing date Oct 2<sup>nd</sup> 1874.

Commenced July 1875

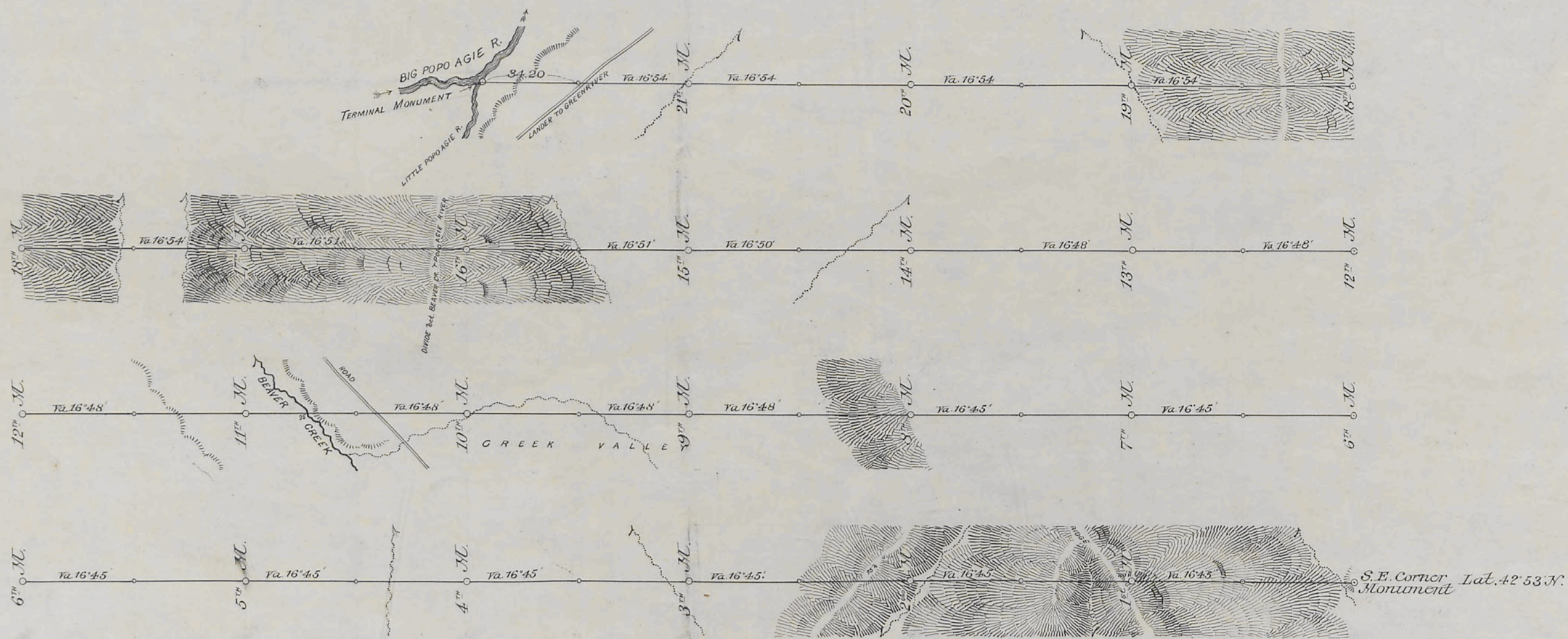
Completed Aug. 1875

Scale 3/4 Inch to 1 Mile.

1969

PART OF THE SOUTH BOUNDARY  
OF THE  
WIND RIVER OR SHOSHONE INDIAN RESERVATION

Scale 40<sup>ch</sup> to 1 inch. Magnetic Var. East.



All at one special rate.

#230

Surveys Designated	By Whom Surveyed	Date of Contract	Amount of Surveys			When Surveyed
			mils	chs	fts	
Part of South Bdy of Wind R. or Shoshone Ind. Res.	Frank S. Wood	Dec. 15 <sup>th</sup> 1886	21	74	20	Apr. 13 <sup>th</sup> 19 <sup>th</sup> 1887

I hereby certify that the above diagram of a part of the South Boundary of the Wind River or Shoshone Indian Reservation in Wyoming Territory, is strictly conformable to the field notes of the survey thereof on file in this office, which have been examined and approved.

Surveyor General's Office,  
Cheyenne, Wyoming,  
June 28<sup>th</sup> 1887

*John Charles Thomas*  
U.S. Surveyor General.