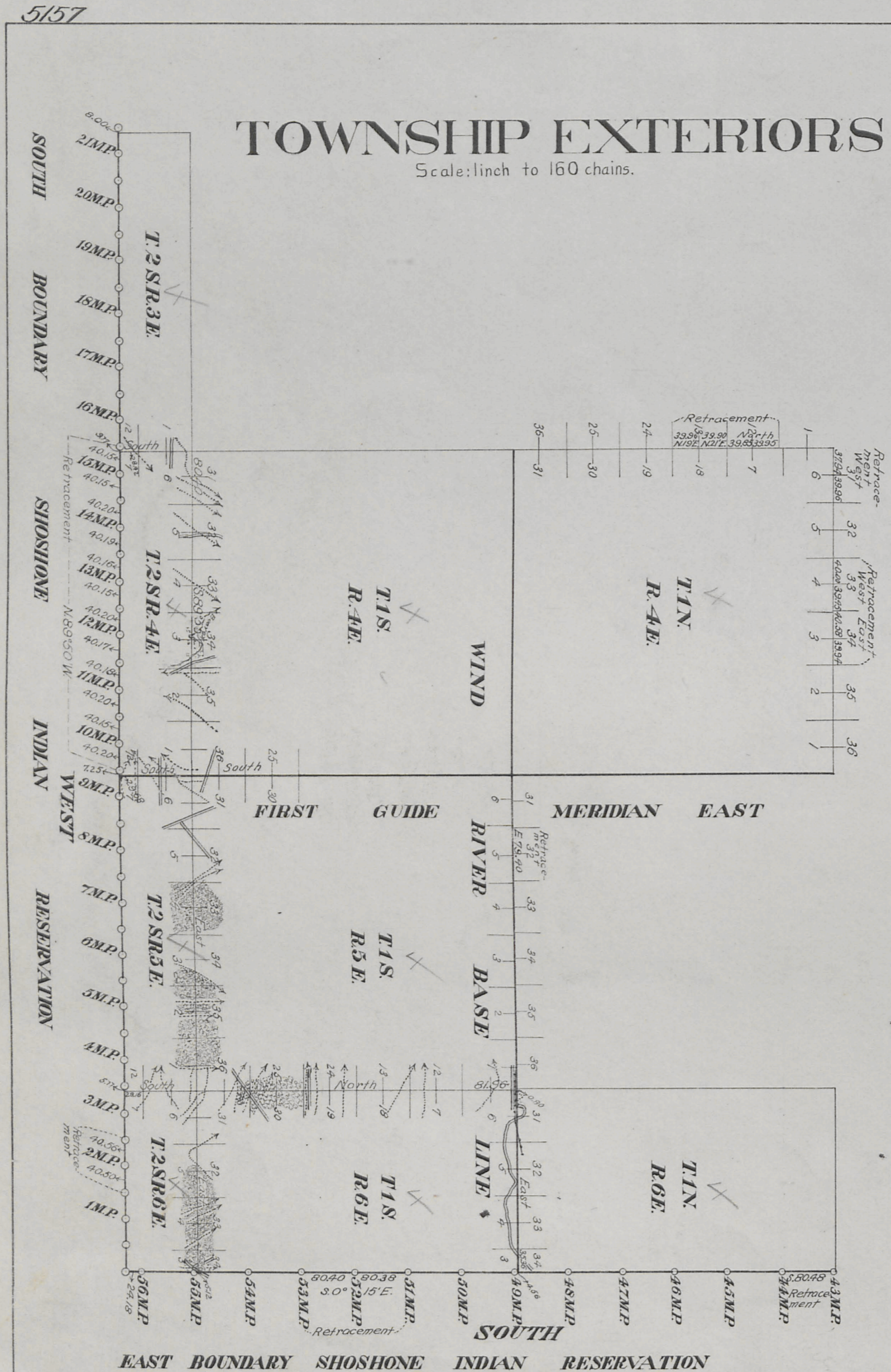


T. 2 S., R. 6 E., Wind River Meridian, Wyoming, Field Note Links

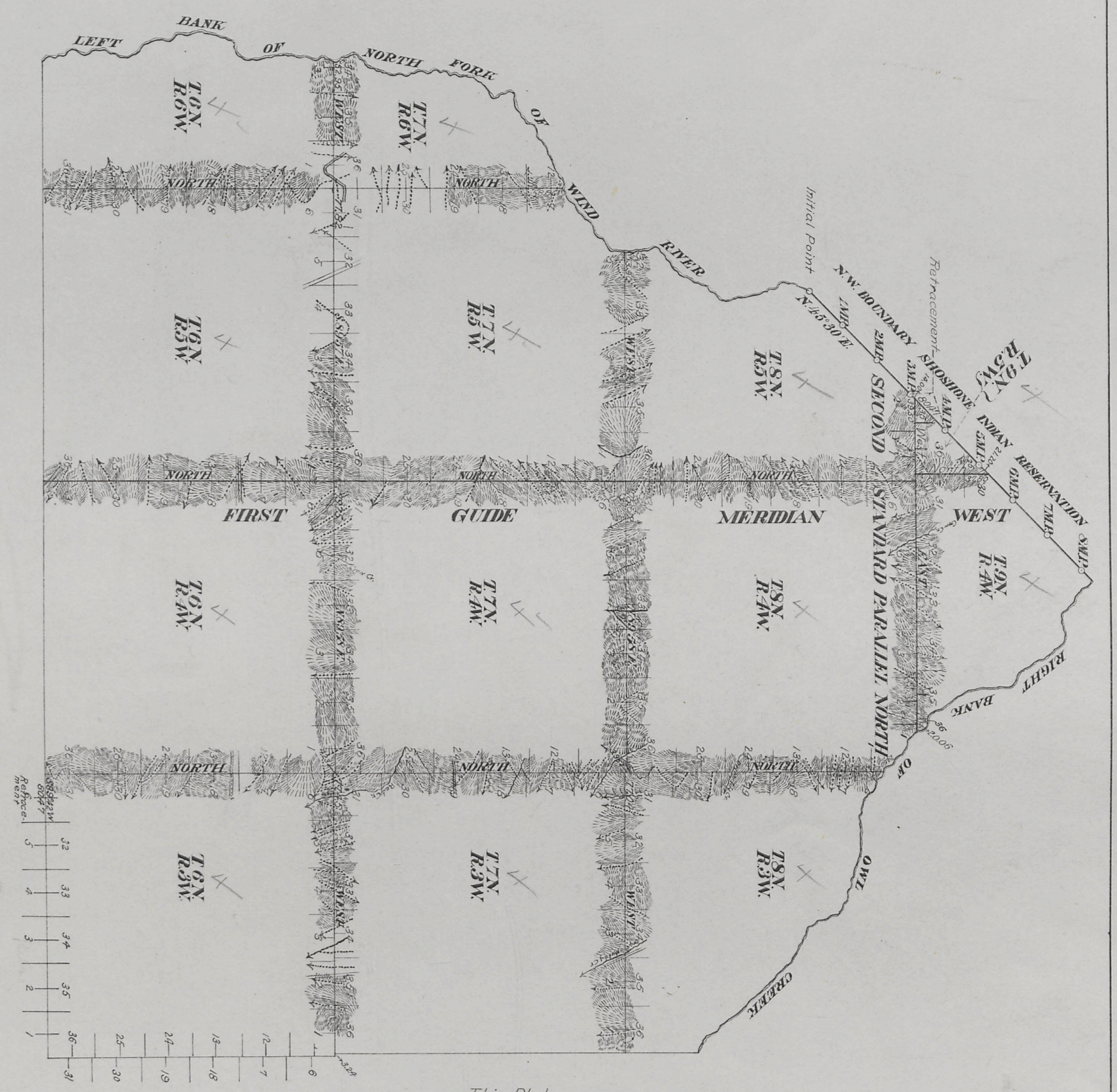
Plat Accession Number(s)	Year(s) of Survey	
		Township Subdivision Plats
5163	1905	https://www.wy.blm.gov/cadastral/countyplats/windriver/fieldnotes/t2sr6e_c301fn.pdf
		Township Exterior Plats
5157	1905	https://www.wy.blm.gov/cadastral/countyplats/windriver/fieldnotes/ext0103.pdf
4969	1887	https://www.wy.blm.gov/cadastral/countyplats/windriver/fieldnotes/ext0002.pdf
4968	1887	https://www.wy.blm.gov/cadastral/countyplats/windriver/fieldnotes/ext0001.pdf



EAST BOUNDARY SHOSHONE INDIAN RESERVATION

Table of Mileage

Survs. Designated	Amount Mls. Chs. Lks.	When Surveyed
Standard Lines	33 02 40	June 6-Oct 18, 1905
Township "	89 36 71	May 19-Oct 21, "
Connecting "	1 07 77	" " " " "
Retracement "	18 02 29	July 22, Oct 14, 15, 21, 22, "



This Plat
 Of The Wind River Base Line through R.6E.; The First Guide Meridian East through Fractional Tps. 1 and 2 S.; the north and west boundaries of Tps. 2 S. Rs. 4 and 6 E.; the south and east boundaries of Tp. 1 S. R. 5 E.; The First Guide Meridian West through Tps. 6, 7, 8 and 9 N.; The Second Standard Parallel North through Rs. 4 and 5 W.; the north and west boundaries of Tps. 6 and 7 N., Rs. 3 and 5 W.; the north boundaries of Tps. 6 and 7 N., R. 4 W. and Tp. 6 N., R. 6 W.; the east boundary of Tp. 8 N., R. 4 W. and the retracement of portions of north and west boundaries of T. 1 N., R. 4 E.; the south boundary of T. 6 N., R. 3 W.; the Wind River Base Line and the south, east and north-west boundaries of the Shoshone Indian Reservation, in Wyoming, is strictly conformable to the field notes of the same by,

Burnham and Adams, U.S. Deputy Surveyors,
 under their
 Contract No. 301, dated May 1, 1905,
 which have been examined, approved and filed in this office,
 U.S. Surveyor General's Office,
 Cheyenne, Wyoming, April 30, 1906.

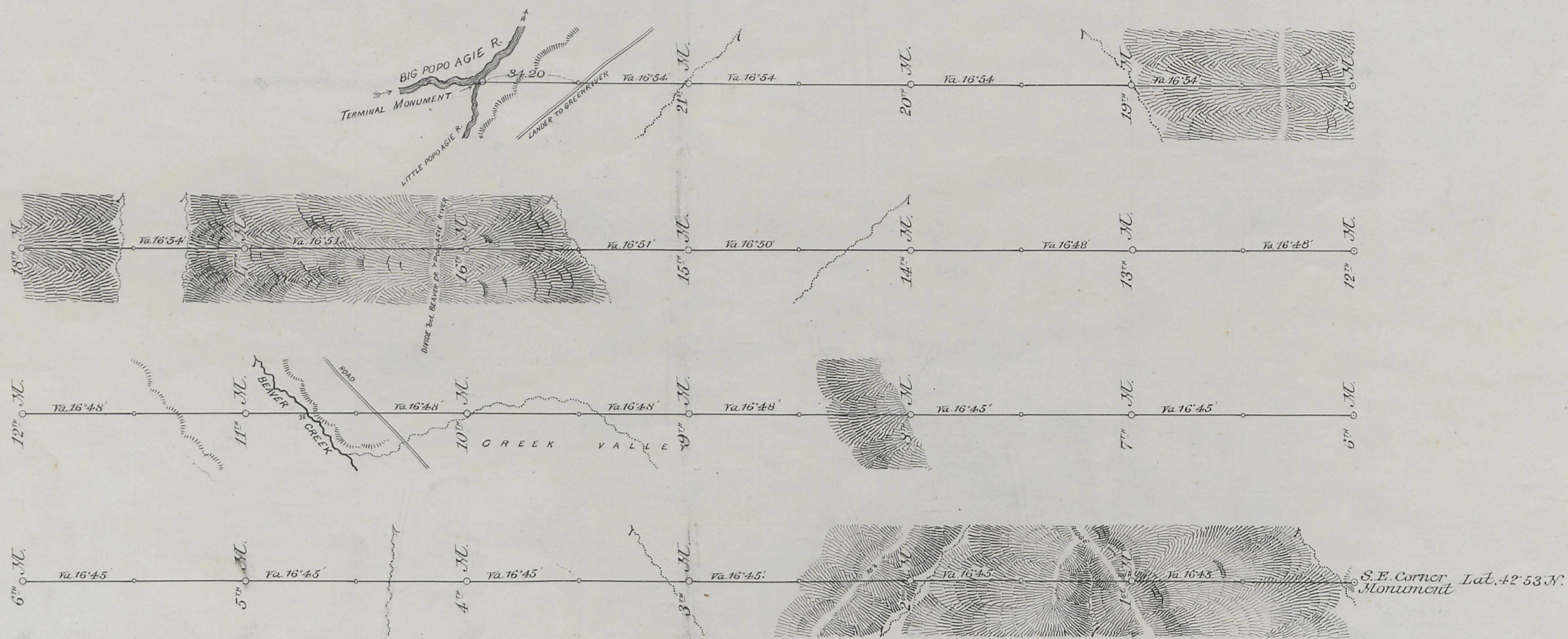
Alpheus P. Hanson
 U.S. Surveyor General.

This plat accepted by the Hon. Commissioner in letter "E", May 10, 1906.

1969

PART OF THE SOUTH BOUNDARY
OF THE
WIND RIVER OR SHOSHONE INDIAN RESERVATION

Scale 40^{ch} to 1 inch. Magnetic Var. East.



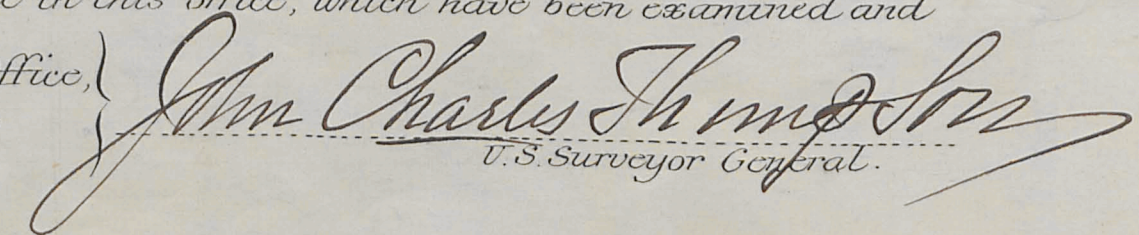
All at one special rate.

#230

Surveys Designated	By Whom Surveyed	Date of Contract	Amount of Surveys			When Surveyed
			mils	cks	lts	
Part of South Bdy of Wind R. or Shoshone Ind. Res.	Frank S. Wood	Dec. 15 th 1886	21	74	20	Apr. 13 th 19 th 1887

I hereby certify that the above diagram of a part of the South Boundary of the Wind River or Shoshone Indian Reservation in Wyoming Territory, is strictly conformable to the field notes of the survey thereof on file in this office, which have been examined and approved.

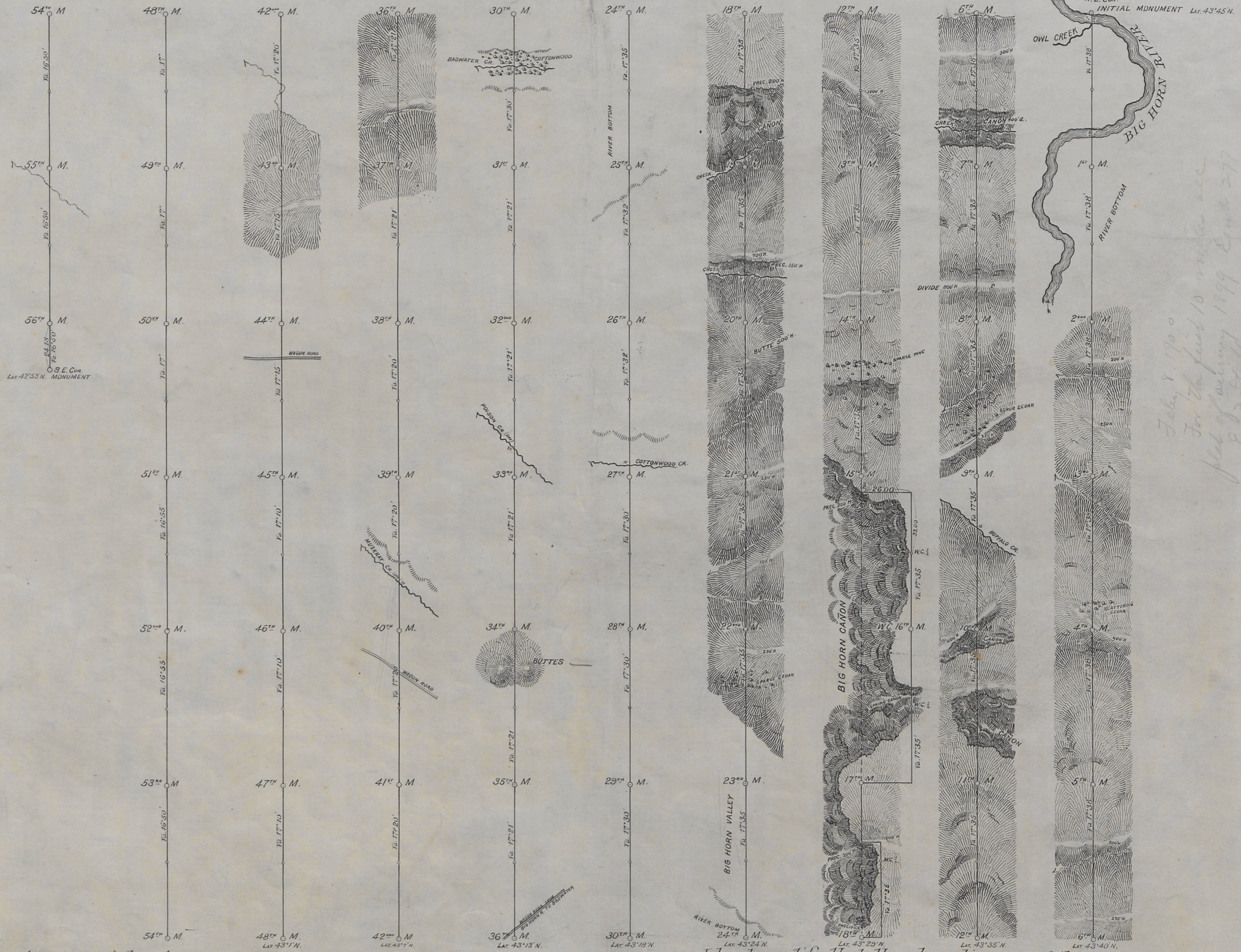
Surveyor General's Office,
Cheyenne, Wyoming,
June 28th 1887


 U.S. Surveyor General.

THE EAST BOUNDARY OF THE WIND RIVER OR SHOSHONE INDIAN RESERVATION

Scale 40^{ths} to 1 inch.

Magnetic Var. East.



Feb. 8, 1900
 For the first 10 miles see
 plot of survey 1899 Book 277
 E. S. Hall.

All at one special rate.

Survey Designated.	By Whom Surveyed.	Date of Contract.	Amount of Surveys mils.	When Surveys.
E. Boundary of the W. R. or Shoshone Ind. Res.	Frank S. Wood.	Dec 15 th 1886	56 24 18	April 2 nd - 12 th 1887

I hereby certify that the above diagram of the East boundary of the Wind River or Shoshone Indian Reservation in Wyoming Territory, is strictly conformable to the field notes of survey thereof on file in this office, which have been examined and approved.
 Surveyor General's Office
 Cheyenne Wyo. June 28th 1887

Am Charles Thompson
 U. S. Surveyor General.