

T. 9 N., R. 5 W., Wind River Meridian, Wyoming, Field Note Links

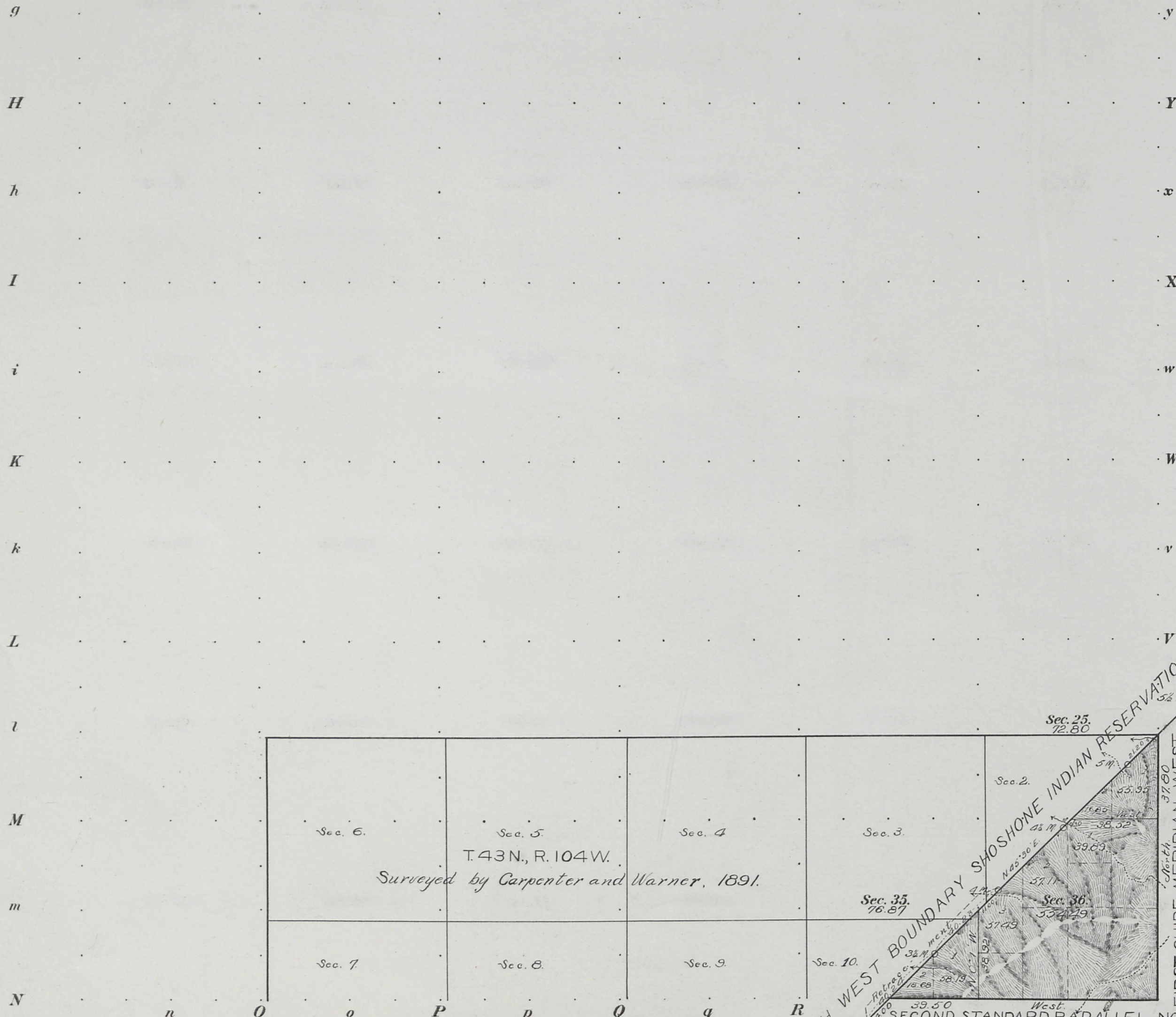
Plat Accession Number(s)	Year(s) of Survey	Township Subdivision Plats
5174	1905	https://www.wy.blm.gov/cadastral/countyplats/windriver/fieldnotes/t9nr5w_c301fn.pdf
Township Exterior Plats		
5157	1905	https://www.wy.blm.gov/cadastral/countyplats/windriver/fieldnotes/ext0103.pdf

(4-675a.)

5174

Fractional Township N^o 9 North Range N^o 5 West of the Wind River Meridian Wyoming.

G f F e E d D c C b B a A



Total number of Acres 704.16

Surveys Designated	By Whom Surveyed	Date of Contract	Amount of Surveys M. Ch ² Lk ²	When Surveyed
East and South Township lines	Enhnam W. Adams	30 ¹ May 1, 1905	2 77 30	July 21-22, 1905
Subdivisions	" "	" " "	77 44	" 22 "
Connections.	" "	" " "	18 30	" " "
Retr. N.W. Entry.	" "	" " "	1 00 47	" " "
N.W. Entry Reserv.	H. B. Carpenter	24 ¹ April 1, 1891	2 07 20	August 30, 1891.

Meanders of								
Posts	Courses	Ch. ² Lk. ²	Posts	Courses	Ch. ² Lk. ²	Posts	Courses	Ch. ² Lk. ²

NORTH WEST BOUNDARY SHOSHONE INDIAN RESERVATION.

FIRST GUIDE MERIDIAN WEST.

Latitude 43° 23' N
Longitude 109° 17' 30" W
Mag. Decl. 17° 30' E.

Sec. 25 72.80
Sec. 2 57.29
Sec. 30 57.29
Sec. 33 76.87

The above Map of Fractional Township N^o 9 North of Range N^o 5 West of the Wind River Meridian Wyoming is strictly conformable to the field notes of the survey thereof on file in this office which have been examined and approved.

Surveyor General's Office.
Cheyenne, Wyoming, April 25, 1906.

Alpheus P. Hanson
Sur. Gen.

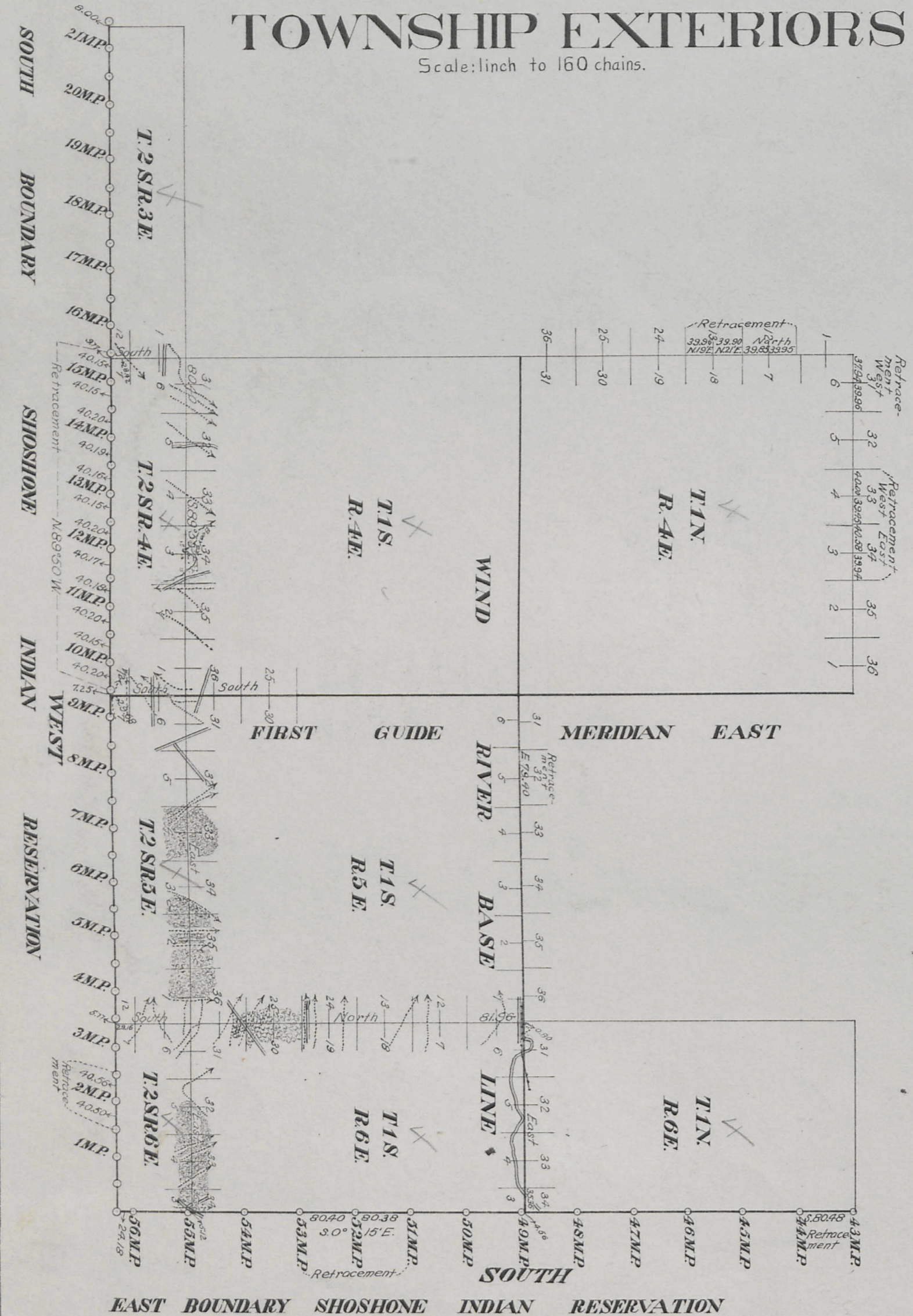
G.J.R. Copy
THE NORRIS PETERS CO LITHO. WASHINGTON, D. C.

This plat accepted by the Hon. Commissioner in letter E, May 10, 1906.

5157

TOWNSHIP EXTERIORS

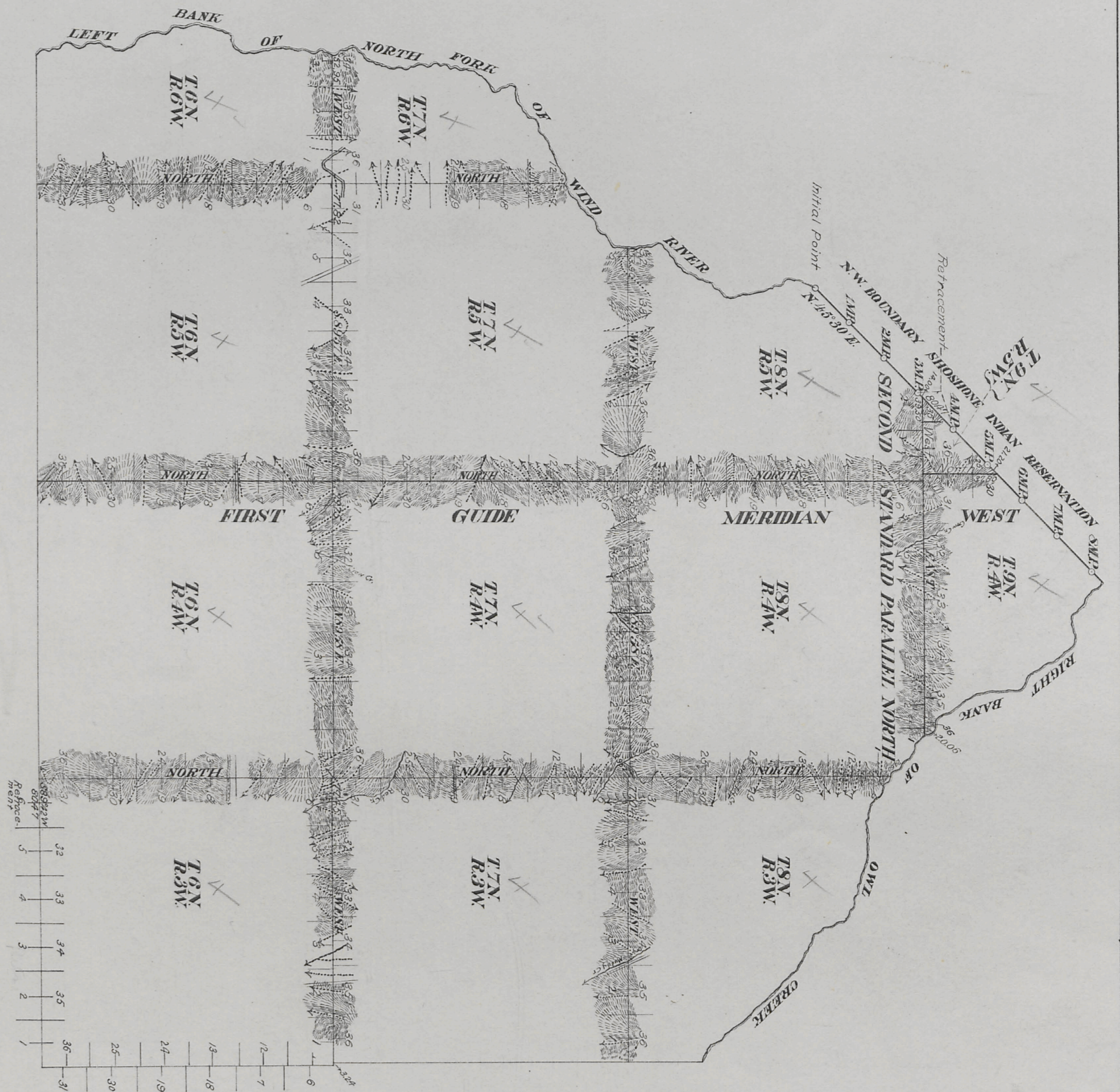
Scale: 1 inch to 160 chains.



EAST BOUNDARY SHOSHONE INDIAN RESERVATION

Table of Mileage

Surv. Designated	Amount Mls. Chs. Lks.	When Surveyed
Standard Lines	33 02 40	June 6-Oct 18, 1905
Township "	89 36 71	May 19-Oct 21, "
Connecting "	1 07 77	" " " " "
Retracement "	18 02 29	July 22, Oct. 14, 15, 21, 22, 29, "



This Plat

Of The Wind River Base Line through R.6E.; The First Guide Meridian East through Fractional Tps. 1 and 2 S.; the north and west boundaries of Tps. 2 S. Rs. 4 and 6 E.; the south and east boundaries of Tp. 1 S. R. 5 E.; The First Guide Meridian West through Tps. 6, 7, 8 and 9 N.; The Second Standard Parallel North through Rs. 4 and 5 W.; the north and west boundaries of Tps. 6 and 7 N., Rs. 3 and 5 W.; the north boundaries of Tps. 6 and 7 N., R. 4 W. and Tp. 6 N., R. 6 W.; the east boundary of Tp. 8 N., R. 4 W. and the retracement of portions of north and west boundaries of T. 1 N., R. 4 E.; the south boundary of T. 6 N., R. 3 W.; the Wind River Base Line and the south, east and north-west boundaries of the Shoshone Indian Reservation, in Wyoming, is strictly conformable to the field notes of the same by,

Burnham and Adams, U.S. Deputy Surveyors,
under their

Contract No. 301, dated May 1, 1905,
which have been examined, approved and filed in this office,
U.S. Surveyor General's Office,
Cheyenne, Wyoming, April 30, 1906.

Alpheus P. Hanson
U.S. Surveyor General.

*This plat accepted by the Hon. Commissioner
in letter "E", May 10, 1906.*

C.W.H.