

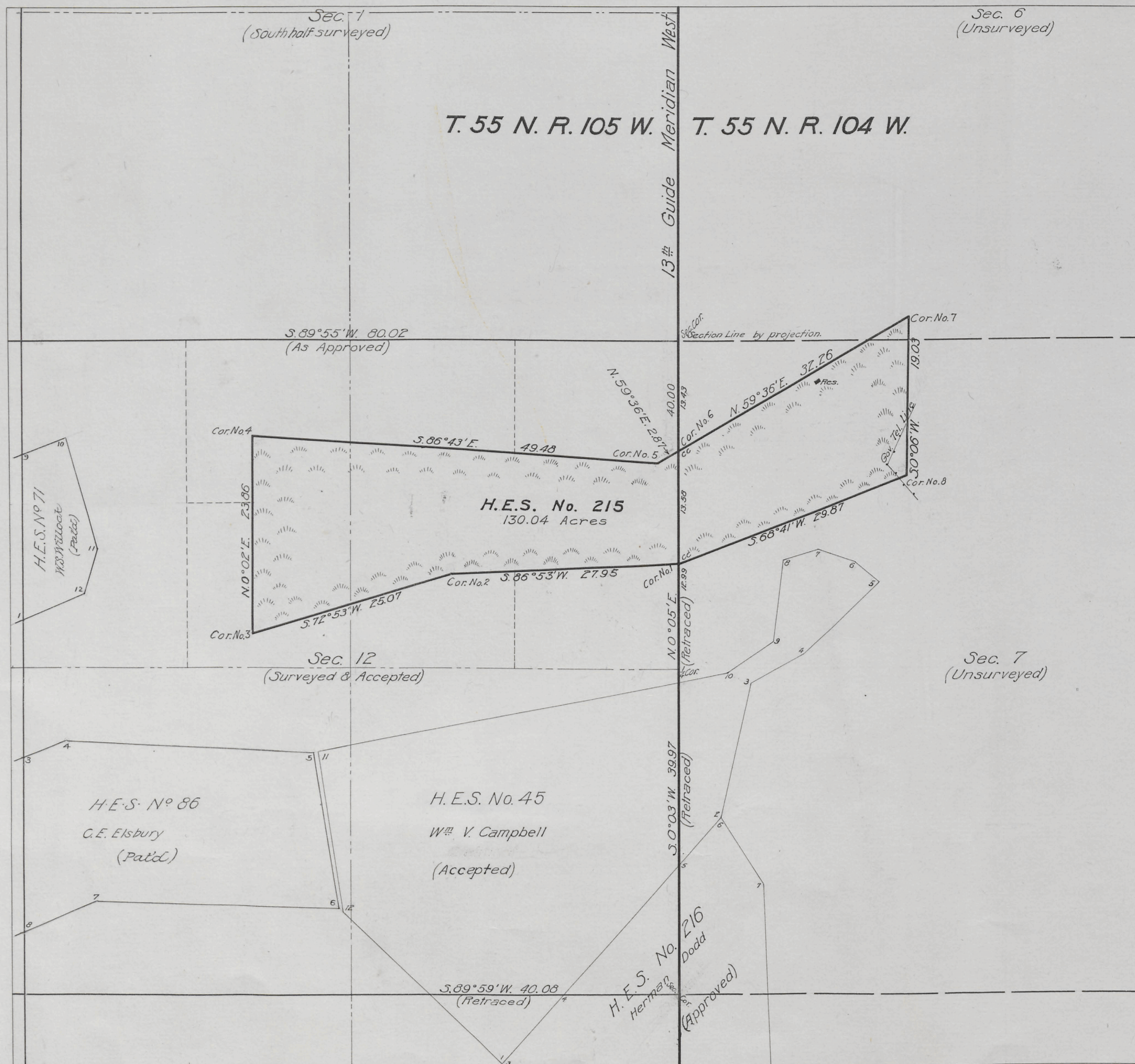
Homestead Entry Survey No. 215, Wyoming, Field Note Links

T. 55 N., Rs. 104 & 105 W., Sixth Principal Meridian, Wyoming

Plat Accession Number(s)	Year(s) of Survey	
5352	1917	https://www.wy.blm.gov/cadastral/homesteads/200-255/fieldnotes/hes215_fn.pdf

5352

Survey accepted July 31, 1919
G.L.O.



Plat of
**HOMESTEAD
ENTRY SURVEY**
No. 215
in the
**SHOSHONE
NATIONAL FOREST**

Section 6, unsurveyed T. 55 N. R. 104 W.
Section 7, unsurveyed T. 55 N. R. 104 W.
Section 12, surveyed T. 55 N. R. 105 W.

of the
**SIXTH PRINCIPAL MERIDIAN
WYOMING**

This plat of Homestead Entry Survey
No. 215 State of Wyoming is
strictly conformable to the field notes
thereof on file in this office, which
have been examined and approved.

U.S. Surveyor General's Office
Cheyenne, Wyoming.

September 7, 1918.

Charles L. Decker
U.S. Surveyor General

SCALE 10 chains to 1 inch

Surveys Designated	By whom Surveyed	Inst. Cont. Group		When Surveyed		Date of Approval
		No.	Date	Began	Completed	
H.E.S. No. 215	J.A. Wallace Sur. Draftsman	215	Apr. 18, 1917	June 22, 1917	June 23, 1917	Sept. 7, 1918
H.E.S. No. 45	Chas. E. Hayden	45	Oct. 23, 1911	Nov. 18, 1911	Nov. 22, 1911	Feb. 1, 1912
H.E.S. No. 216	W.C. Campbell	216	Apr. 28, 1917	June 22, 1917	June 23, 1917	Sept. 5, 1918
13th Guide Mer.	Richard E. Bandy	333	June 20, 1908	Sept. 13, 1908	Sept. 28, 1908	Nov. 3, 1911
Subdivisions	Richard E. Bandy	333	June 20, 1908	Sept. 17, 1908	Sept. 30, 1908	Nov. 3, 1911
H.E.S. No. 71	J.P. Davis	71	Sept. 5, 1913	July 17, 1914	July 20, 1914	March 26, 1915
H.E.S. No. 86	J.P. Davis	86	May 18, 1914	July 13, 1914	July 16, 1914	April 10, 1915

Areas in Acres		
H.E. Survey No.	215	Conflicts
In Section 6 & 7	45.35	
In Section 12	84.69	
In Section		
In Section		
Total	130.04	

Act of June 11, 1906	Act of Aug. 11, 1916
List No. 2-517	Dated Sept. 1, 1911
Latitude 44°46' N.	Observations at
Longitude 109°28' W.	Corner No. 1
Mean Mag. Decl. 18°04' E.	

ENT. NO. 210328 NOTES
PAT. NO. 226612
C. S. NO. -----

James L. Dander
Oct. 25, 1919

215