

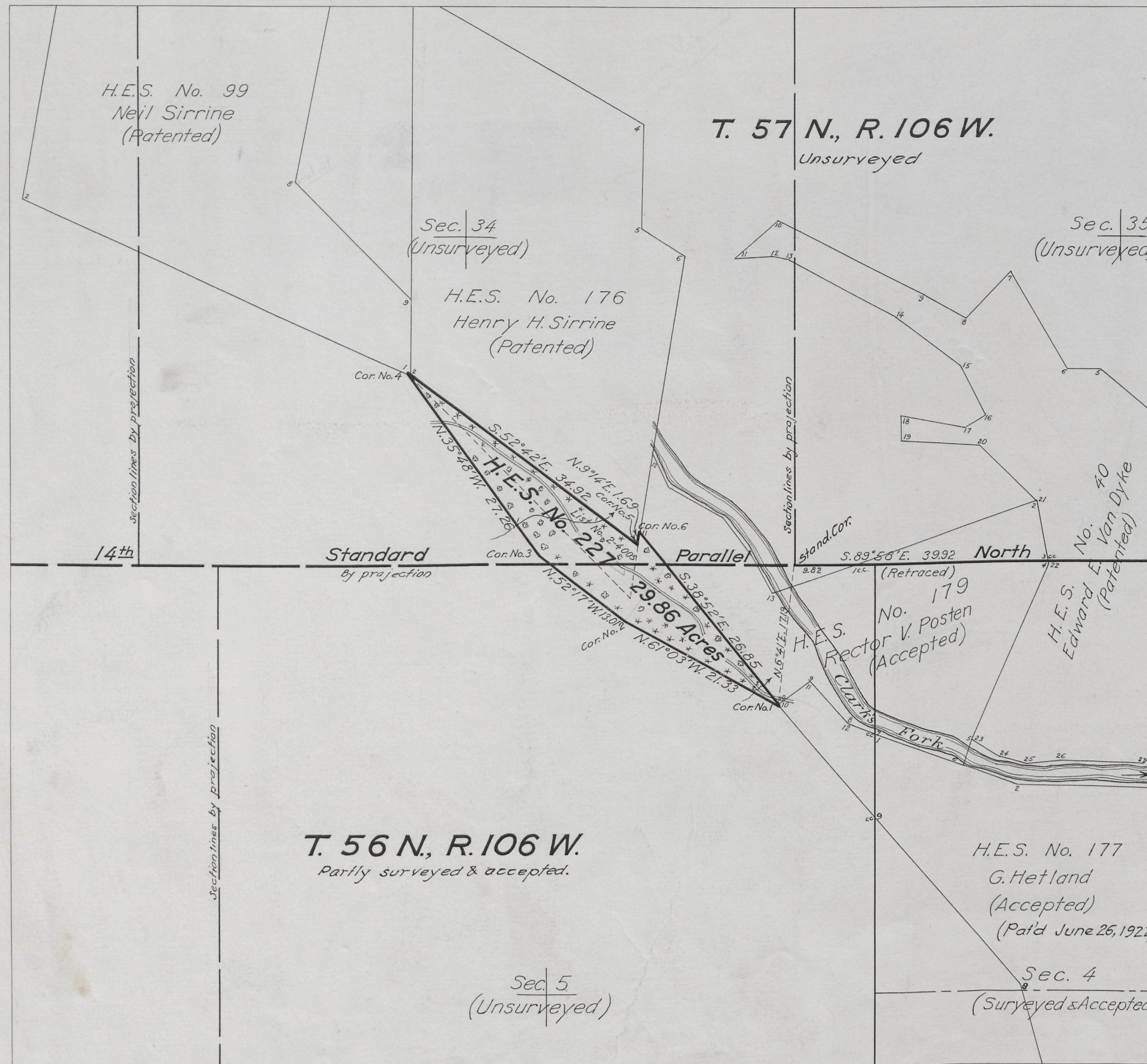
Homestead Entry Survey No. 227, Wyoming, Field Note Links

Tps. 56 & 57 N., R. 106 W., Sixth Principal Meridian, Wyoming

Plat Accession Number(s)	Year(s) of Survey	
5362	1920	https://www.wy.blm.gov/cadastral/homesteads/200-255/fieldnotes/hes227_fn.pdf

5362 ORIGINAL

Survey accepted October 23, 1922
General Land Office



Plat of
**HOMESTEAD
ENTRY SURVEY**
No. 227
in the
**SHOSHONE
NATIONAL FOREST**
in
Section 5, Unsurveyed
T. 56 N., R. 106 W.
Section 34, Unsurveyed
T. 57 N., R. 106 W.
of the
**SIXTH PRINCIPAL MERIDIAN
WYOMING**

This plat of Homestead Entry Survey
No. 227 State of Wyoming is
strictly conformable to the field notes
thereof on file in this office, which
have been examined and approved.

U.S. Surveyor General's Office

Cheyenne, Wyoming
October 10, 1922

Edw. W. Arthur
U.S. Surveyor General

SCALE 10 chains to 1 inch

Surveys Designated	By whom Surveyed	Inst., Cont. Group		When Surveyed		Date of Approval
		No.	Date	Began	Completed	
H.E.S. No. 227	S. Simms, Sur-Draftsman		April 11, 1919	Sept. 2, 1920	Sept. 6, 1920	October 10, 1922
H.E.S. No. 99	J. P. Davis, Sur. For. Ser.		May 29, 1914	Aug. 13, 1914	Aug. 17, 1914	Sept. 9, 1915
H.E.S. No. 176	S. A. Wallace, Sur-Draftsman		Jan. 20, 1917	July 1, 1917	July 3, 1917	Sept. 27, 1918
H.E.S. No. 179	S. A. Wallace, Sur-Draftsman		Jan. 20, 1917	July 5, 1917	July 7, 1917	Oct. 4, 1918
H.E.S. No. 40	C. E. Hayden		May 4, 1911	June 19, 1911	June 21, 1911	Nov. 29, 1911
H.E.S. No. 177	S. A. Wallace, Sur-Draftsman		Jan. 20, 1917	June 25, 1917	June 27, 1917	Sept. 30, 1918
Standard Par'l	Richard E. Bandy	333	June 20, 1908	July 26, 1909	July 26, 1909	Nov. 3, 1911

Areas in Acres		
H.E.S. Survey No. 227		
In Section	Listed	Unlisted
In Section	9.77	20.09
In Section		
In Section		
Total	9.77	20.09

Act of June 11, 1906 Act of May 31, 1920
List No. 2-4005 Dated March 30, 1915
List No. 2- Dated
Latitude 44°52'N
Longitude 109°39'W. Observations at
Mean Mag. Decl. 18°42'E. Corner No. 1

227

ENT. NO. 177-1922
PAT. NO. 177-1922
C. S. NO. 177-1922

Trans to Saunders Co.
November 13, 1922