

## Homestead Entry Survey No. 245, Wyoming, Field Note Links

T. 43 N., Rs. 106 & 107 W., Sixth Principal Meridian, Wyoming

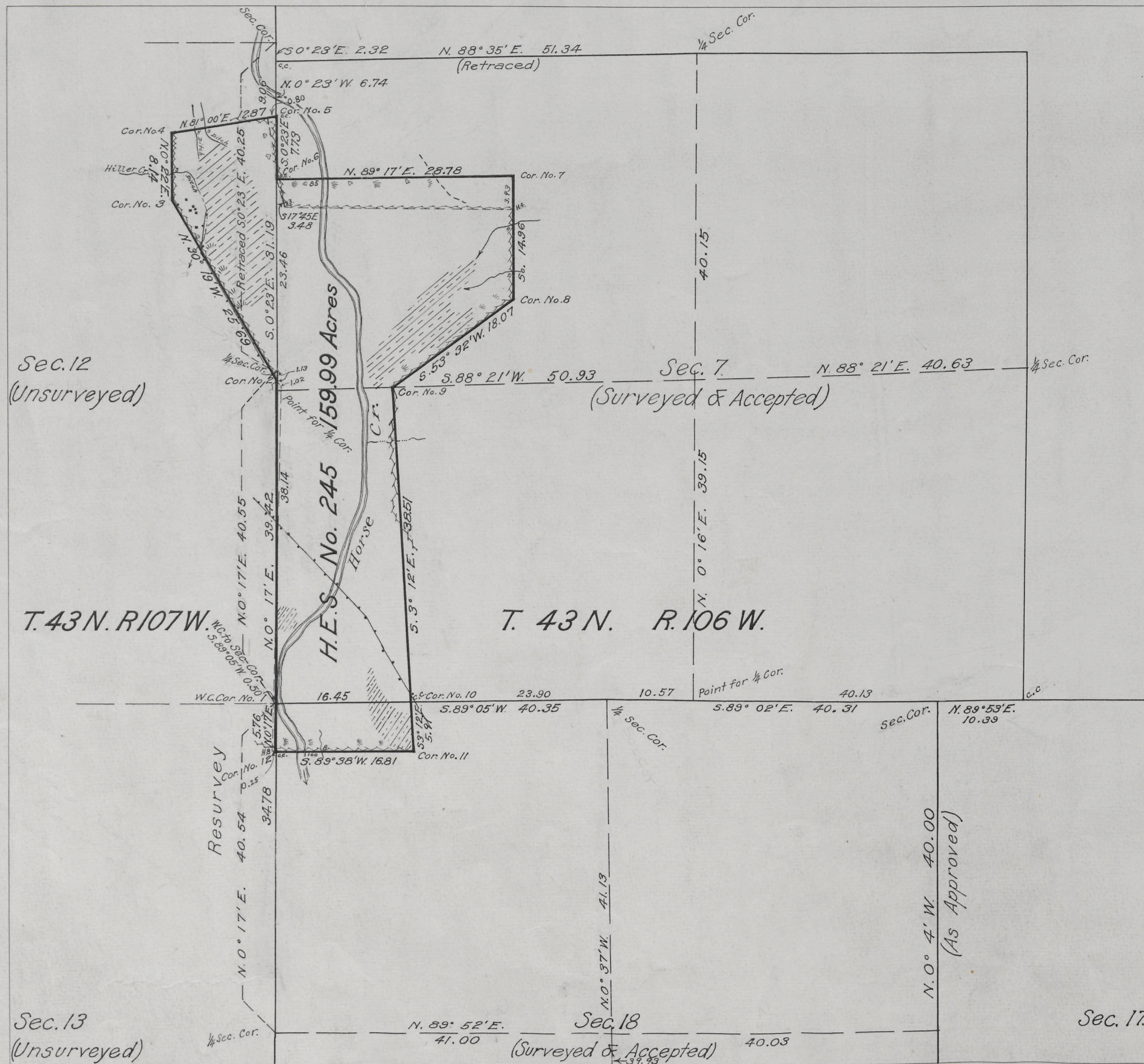
Plat Accession Number(s)	Year(s) of Survey	
5377	1924	<a href="https://www.wy.blm.gov/cadastral/homesteads/200-255/fieldnotes/hes245_fn.pdf">https://www.wy.blm.gov/cadastral/homesteads/200-255/fieldnotes/hes245_fn.pdf</a>



5377

ORIGINAL

Survey Accepted Nov. 17, 1925.  
G.L.O.



Plat of  
**HOMESTEAD  
ENTRY SURVEY**  
No. 245  
in the  
**WASHAKIE  
NATIONAL FOREST**  
in  
Sections 7 & 18, Surveyed,  
T. 43 N., R. 106 W.,  
Section 12, Unsurveyed,  
T. 43 N., R. 107 W.  
of the  
**SIXTH PRINCIPAL MERIDIAN  
WYOMING**

This plat of Homestead Entry Survey  
No. 245 State of Wyoming is  
strictly conformable to the field notes  
thereof which have been examined  
and approved.

Office of U.S. Supervisor of Surveys  
Denver, Colorado November 6, 1925

*Blanton Johnson*  
U.S. Supervisor of Surveys

SCALE 10 chains to 1 inch

Surveys Designated	By whom Surveyed	Inst., Cont., Group		When Surveyed		Date of Approval
		No.	Date	Began	Completed	
H.E.S. No. 245	Riley Cass Jr. Chief Surveyor		Feb. 5, 1924	August 13, 1924	August 23, 1924	Nov. 6, 1925
Subdivisions & Twp. Lines	Carpenter & Warner	241	April 1, 1891	August 19, 1891	August 20, 1891	May 21, 1892
Subdivisions	Augustus L. Coleman	270	May 16, 1898	July 30, 1898	August 5, 1898	Jan. 6, 1900

Areas in Acres	
H.E. Survey No.	Unlisted
In Section 7	124.36
In Section 12	25.92
In Section 18	9.71
In Section	
Total	159.99 Acres

Act of June 11, 1906	Act of June 5, 1924
List No. 2-3001 Amended	Dated May 14, 1925
Latitude 43° 42.4' N.	Observations at
Longitude 109° 38.1' W.	Corner No. 1
Mean Mag. Decl. 17° 57' E.	

245

ENT. NO. 610659  
PAT. NO. 9813 04  
C. S. NO. 672736  
NOTES  
V.-----  
P.-----

Trans to Lander L.O.  
December 28, 1925