

Air Task Group: Monitoring Task Update

Cara Casten

WDEQ-AQD

June 16, 2004

Work Plan Task A1: Monitoring

- ◆ ***Objective:*** Assessment of existing ambient air quality monitoring.
- ◆ ***Plan:*** To produce a map and companion summary of existing ambient monitoring; make map and data available to Clearinghouse website; assess need for additional ambient monitoring

Work Plan Task A1 (cont')

- ◆ ***Responsibilities:*** Expect agencies to provide info about sponsored monitors; participate in discussion of need for additional monitors. Cara is the lead for Task A1.
- ◆ ***Costs:*** In-kind support of participating agencies
- ◆ ***Sequencing:*** Short-term, see timetable for expected completion dates

Actual Timeline

- ◆ Monitoring questionnaire sent out for comment 2/26/04
- ◆ Questionnaire finalized 4/7/04
- ◆ Questionnaire and example sent out 4/13/04; original due date 4/28/04
- ◆ Latest due date 5/21/04
- ◆ As of 6/14/04 still missing FS data and secondary NPS data

Information Collection

- ◆ Definition of “monitors”: An ambient air quality monitor is any mechanical monitor that monitors air quality or air quality related values.
- ◆ Collected information on both active and historical monitors
- ◆ Preliminary Information: name, operational dates, location, parameters, sponsoring agency, network

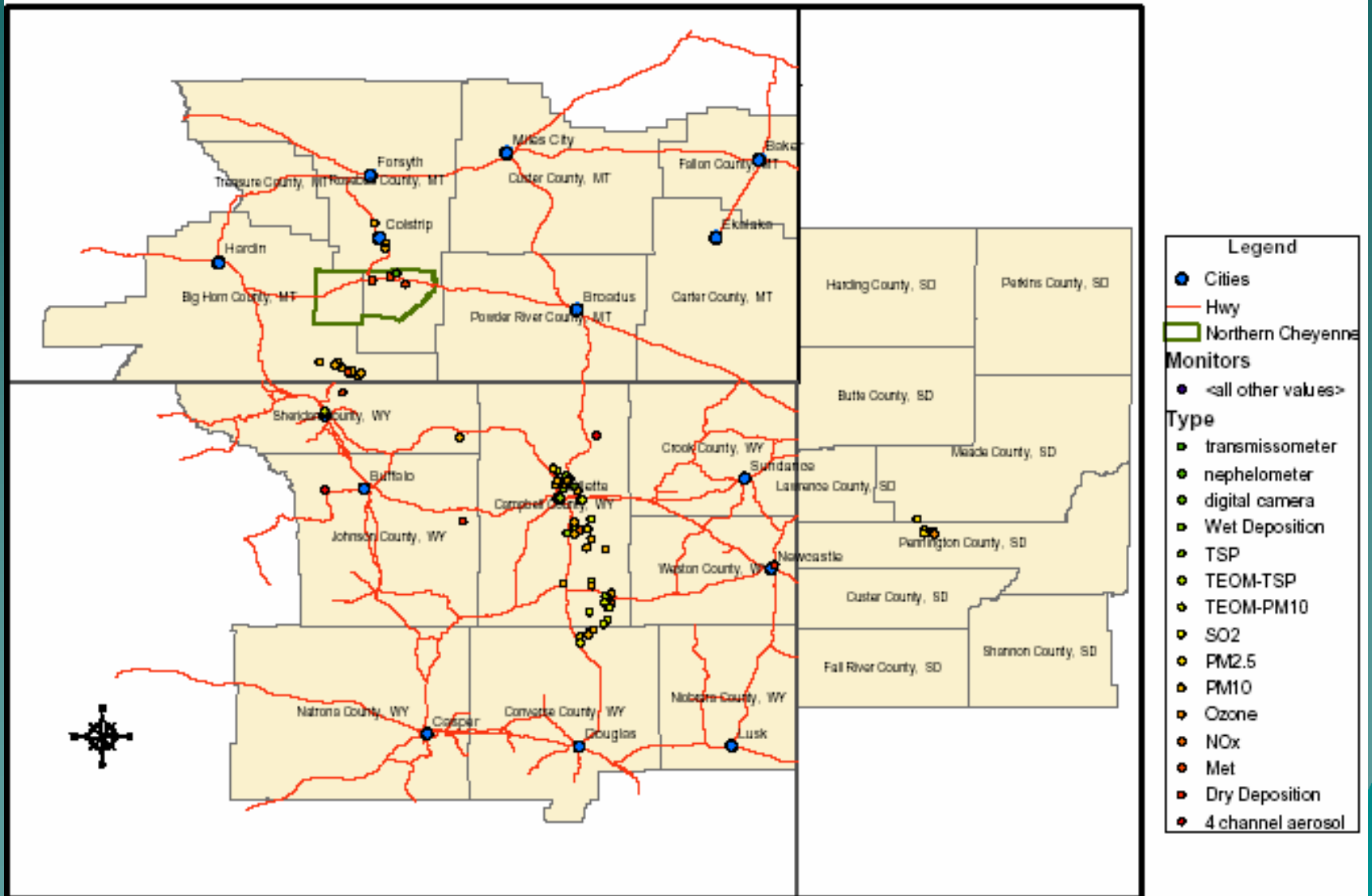
Information collection (cont')

- ◆ Secondary information:
 - Objective
 - Site operator
 - Collection methods
 - Data completeness/validity
 - QA procedures
 - Data reporting

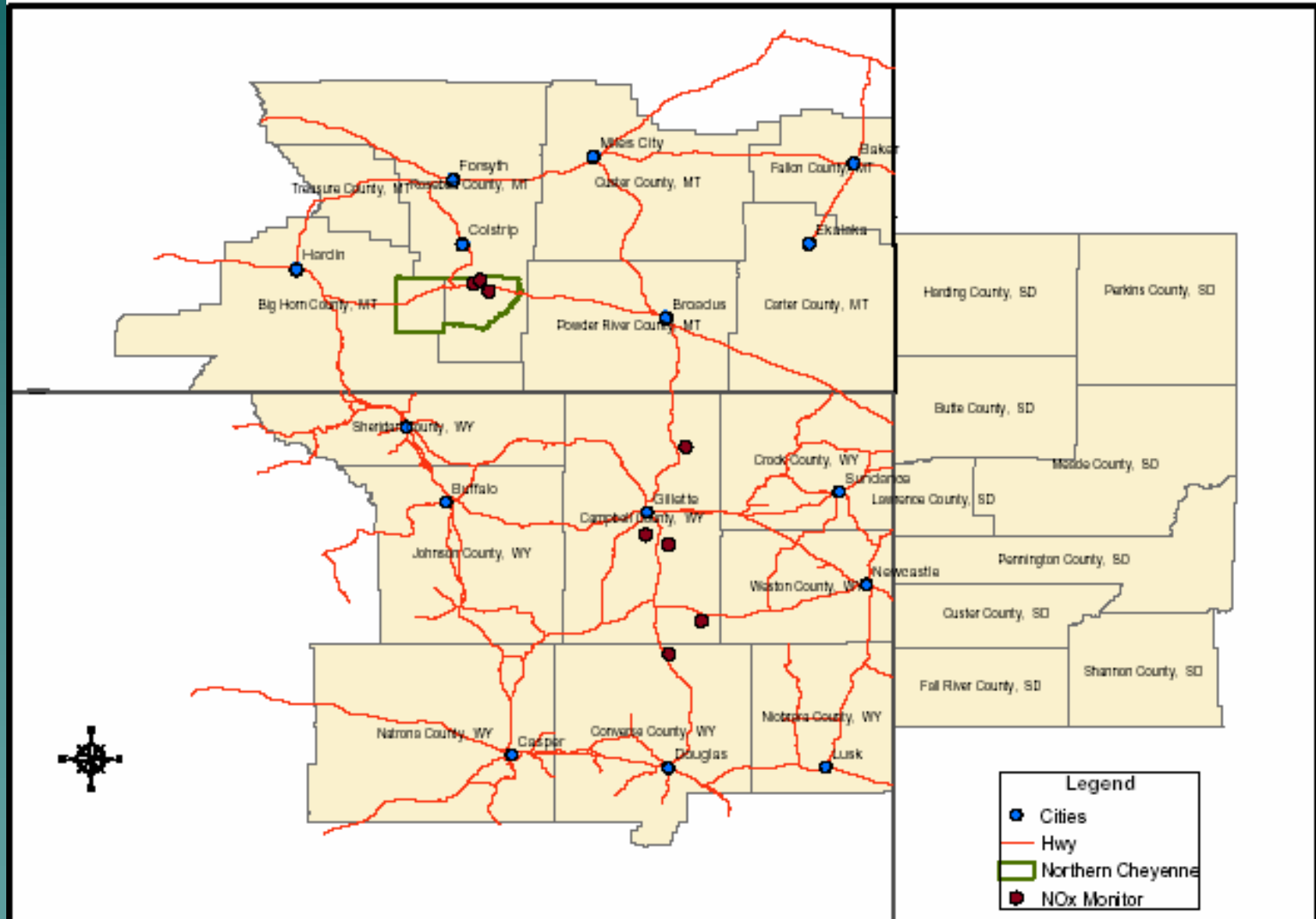
Information Storage/Presentation

- ◆ Stored information in an Access database
- ◆ Used ArcGIS to retrieve monitor information and make basic maps
- ◆ Will collaborate with WyGISc to link maps to the CBM Clearinghouse
- ◆ Will produce summary companion document for maps

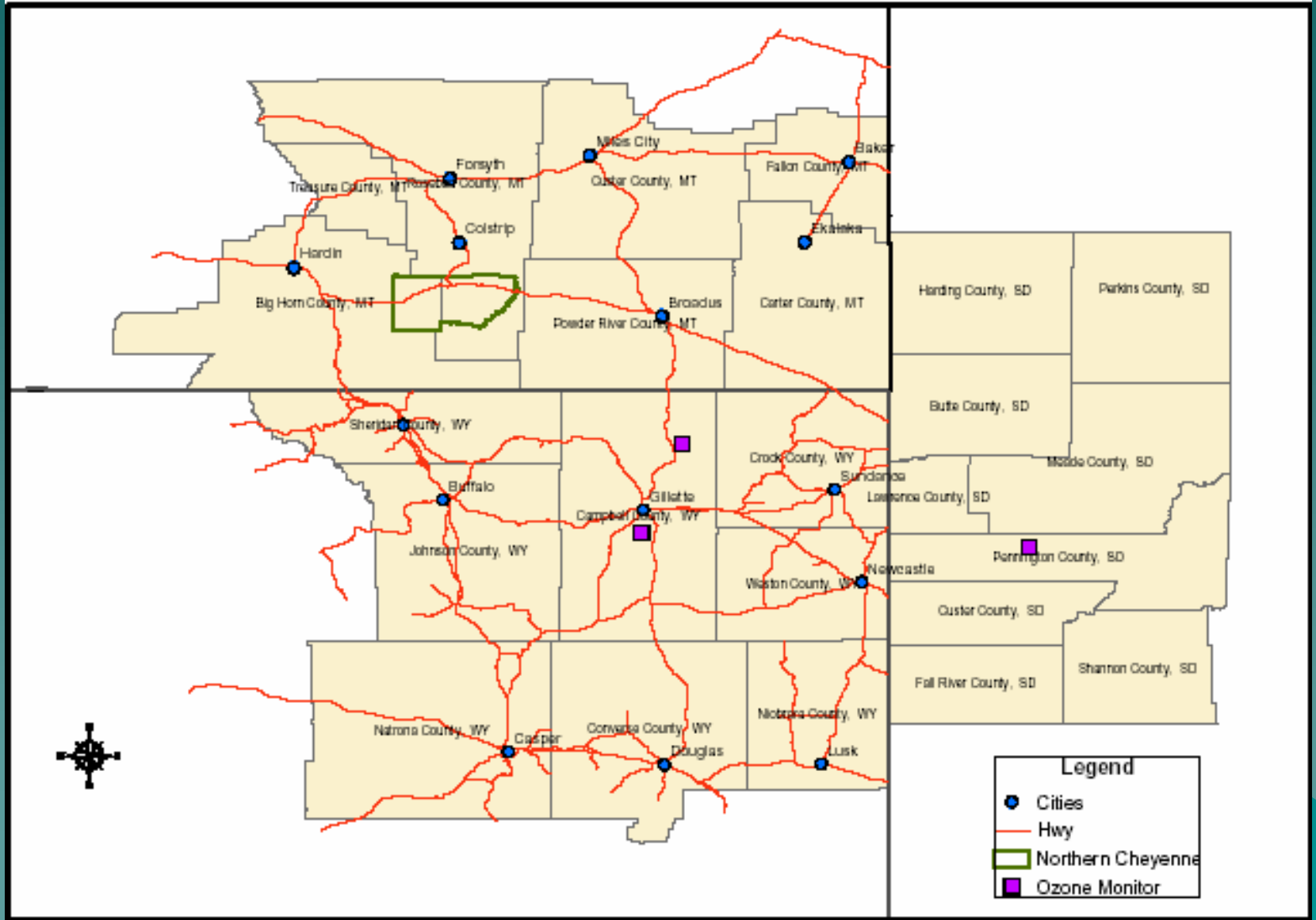
PRB Air Quality Monitors



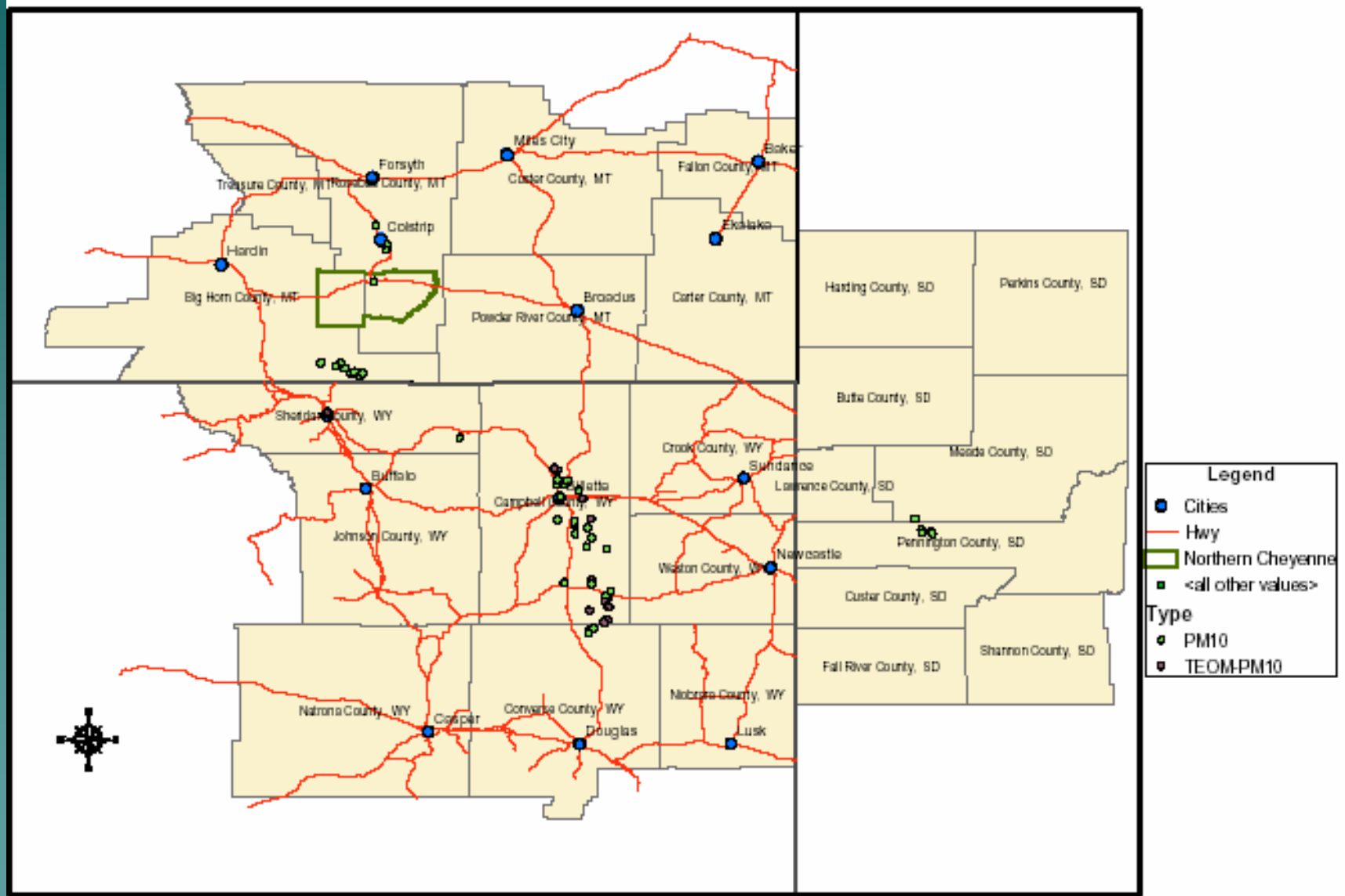
PRB NOx Monitoring



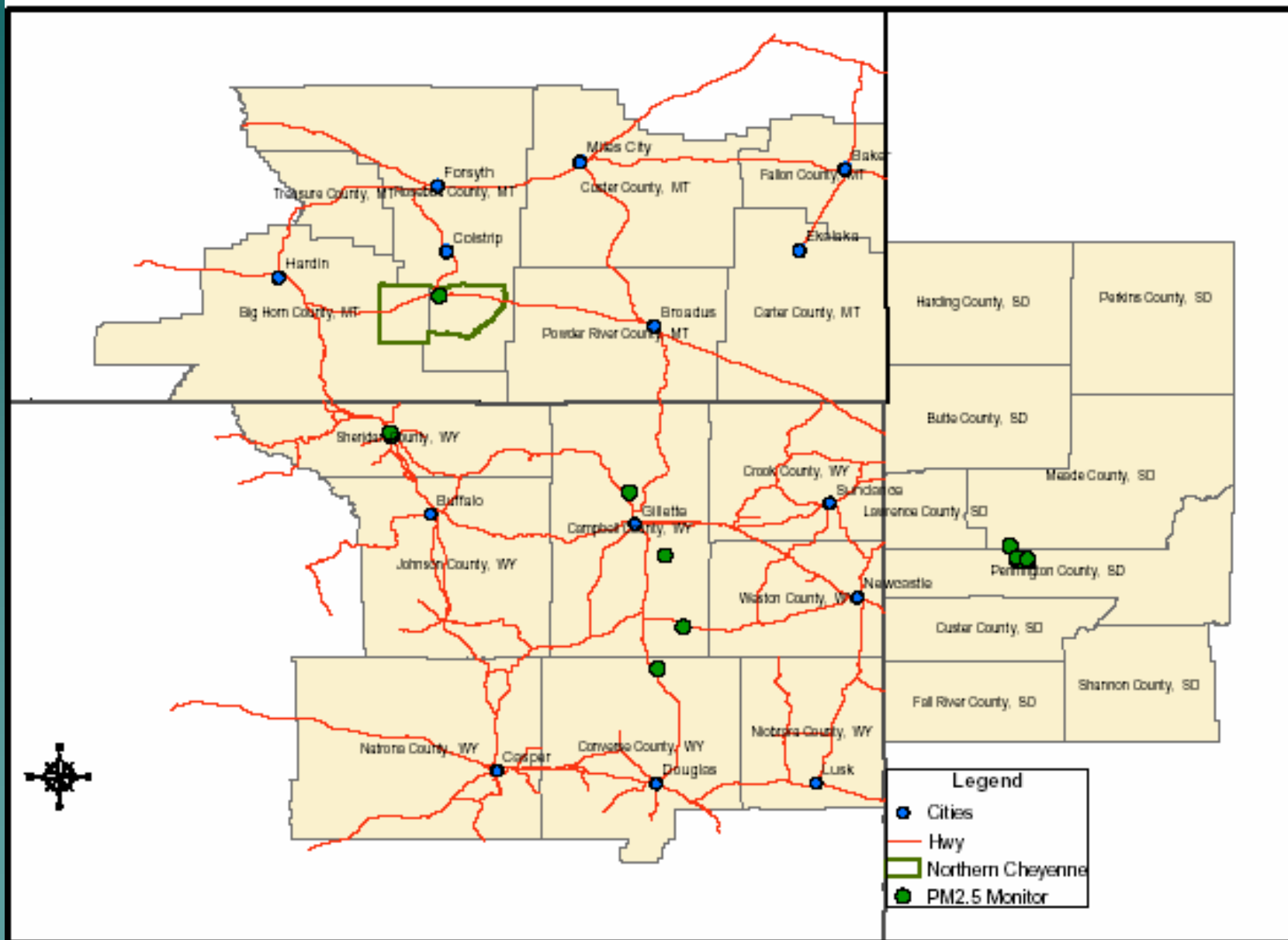
PRB Ozone Monitoring



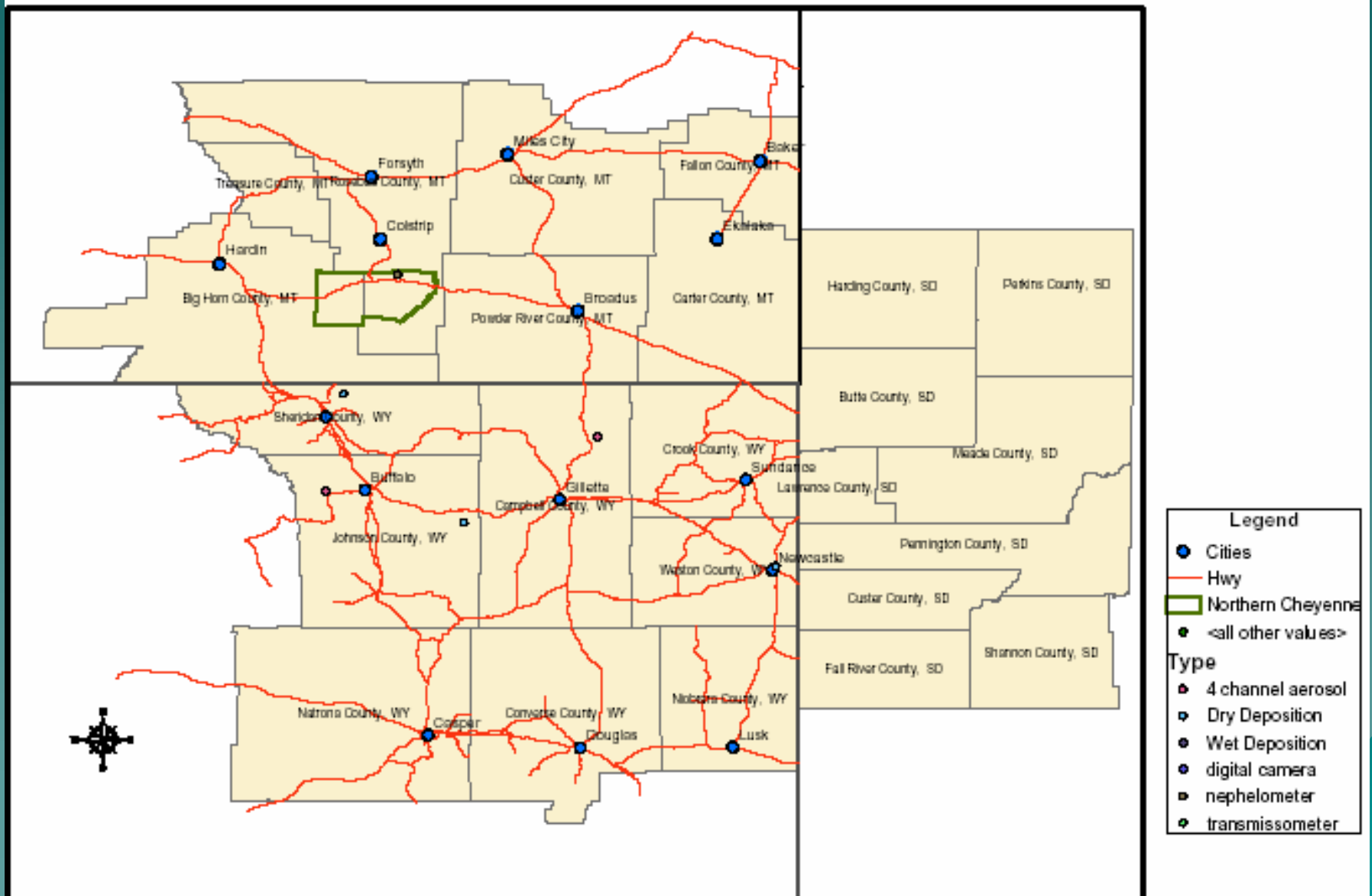
PRB PM10 Monitoring



PRB PM2.5 Monitoring



PRB AQRV Monitors



Next Steps

- ◆ Collect missing monitor info
- ◆ Finalize maps
- ◆ Collaborate with CBM Clearinghouse
- ◆ Make summary companion document
- ◆ Use information to make recommendations on future air quality monitoring sites in PRB area.