

Water Resources Task Group Update



Andy Bobst, Hydrologist

BLM – MT – Miles City

February 18th, 2004

Water Tasks

1. Develop a surface water monitoring plan for watersheds anticipated to be affected by CBNG development (build off of EPA/USGS outline, the WY-BLM monitoring plan, and existing surface water monitoring). The whole group will be involved for watersheds that cross state lines, while state sub-groups will be used for watersheds which lie exclusively in a single state.
2. Develop an integrated groundwater monitoring plan for aquifers anticipated to be affected by CBNG development. (Build off of MT-TAC recommendations, and existing monitoring in WY and MT).

Water Tasks (cont.)

3. Prepare an ongoing list of studies being conducted, and provide recommendations on additional studies that are needed.
4. Function as a forum for discussion of issues relating to the development of TMDLs. The whole group will be involved in developing TMDLs for watersheds that cross state lines, while state sub-groups will be used for watersheds which lie exclusively in a single state. The final decision on appropriate TMDLs is a State and EPA function.

Status of Surface Water Monitoring Plans (Task 1)

- Have agreed that regional monitoring and site specific monitoring should be addressed separately.
- Have determined that a separate monitoring plan must be developed for each major perennial stream.
 - Tongue River (MT-WY)
 - Powder River (MT-WY)

Task 1 (cont.)

- Therefore end up with Titles similar to the following:
 - Regional Monitoring Plan for the Tongue River Watershed
 - Monitoring Criteria for Infiltration Basins
 - Monitoring Criteria for Lined Basins
 - Monitoring Criteria for On-Drainage Impoundments
- The current plan is to develop the Regional Plan for the Tongue River first since this is a priority for both states.

Task 1 (cont.)

- Working to compile the different monitoring programs that are currently ongoing
 - NPDES Discharge Permit Related Monitoring
 - Regional Monitoring (USGS, BLM, DEQs EPA and TMDLs)
- Have sent out questionnaire spreadsheet to acquire consistent data.
- Anticipate using the existing USGS Plan as a template.

USGS		
Site number	gaging station number	Site name
MAINSTEM SAMPLING SITES		
1	06299980	Tongue River at Monarch, WY
2	06306300	Tongue River at State Line, MT)
3	06307500	Tongue River at Tongue R. Dam, MT
4	06307616	Tongue River at Birney Day School, MT
5	06307830	Tongue River at Brandenburg Bridge, MT
6	06308500	Tongue River at Miles City, MT
TRIBUTARY SAMPLING SITES		
7	06305700	Goose Creek near Acme, WY
8	06306250	Prairie Dog Creek near Acme, WY
9	06307600	Hanging Woman Creek near Birney, MT
10	06307740	Otter Creek at Ashland, MT
11	06308400	Pumpkin Creek near Miles City, MT

EXPLANATION
 ▼ SAMPLING SITE - All sites will have continuous streamflow gages and conductance monitors.

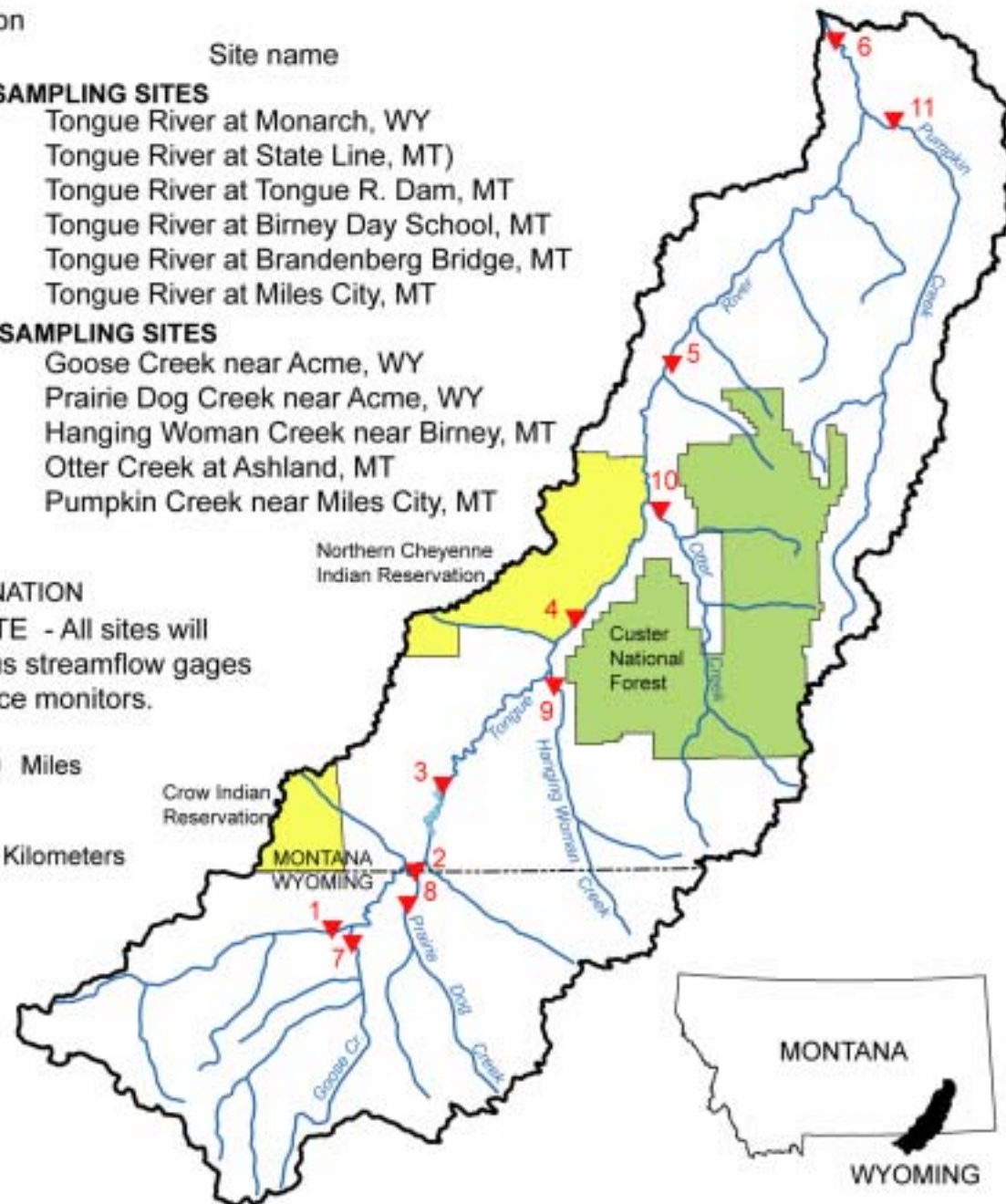
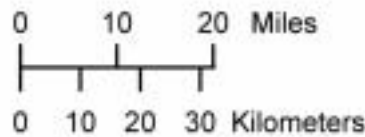


Figure 1. Water-quality sampling sites in the Tongue River watershed.

Status of Development of an Integrated Groundwater Monitoring Network (Task 2)

- Working to develop Maps of the different regional monitoring sites
 - BLM - MT
 - BLM - WY
 - MBMG
 - USGS
 - Northern Cheyenne
- Plan to post on the CBM Clearinghouse website (WY-BLM)

Task 2 (cont.)

- Need to workout which aquifers are being monitored
- Need to develop common GIS data standards
- Also plan to construct coverage of "study sites" where basins, alluvium, sandstone above coals etc. are being monitored (all to go on the Clearinghouse)

Status of the Development of a list of Studies and Suggestions for Future Studies (Task 3)

- Have sent out a questionnaire to find out in a consistent way the studies that are ongoing.
- Have discussed in meetings the need for further work on the fate of water from impoundments.

Function as a forum for discussion of issues relating to the development of TMDLs (Task 4)

- Several members of the CBNG Water Task group are also on the Modeling Committee for the development of TMDLs for the Tongue River, Powder River and Rosebud Creek.
 - Andy Bobst
 - Dan Hengle
 - John Barnes
 - Art Compton
- TMDLs are a subject covered in all meetings

Suggested Added Task (#5?)

- Something along the lines of "Coordinate at a staff levels with other agencies to avoid or minimize administrative conflicts between agencies."
- This is due to the fact that a significant portion of our meetings are spent clarifying what the roles/requirements/responsibilities of different agencies are.
- Would like it to be clear that this is an appropriate function for this Task Group, and that it is agreed that progress in this area is a justified use of the time of the members of the group.