

CODA NETLAUNCHER:

**A MOBILE TOOL FOR CAPTURING
GREATER SAGE-GROUSE**

Andy Sutphin

Big Horn Environmental Consultants

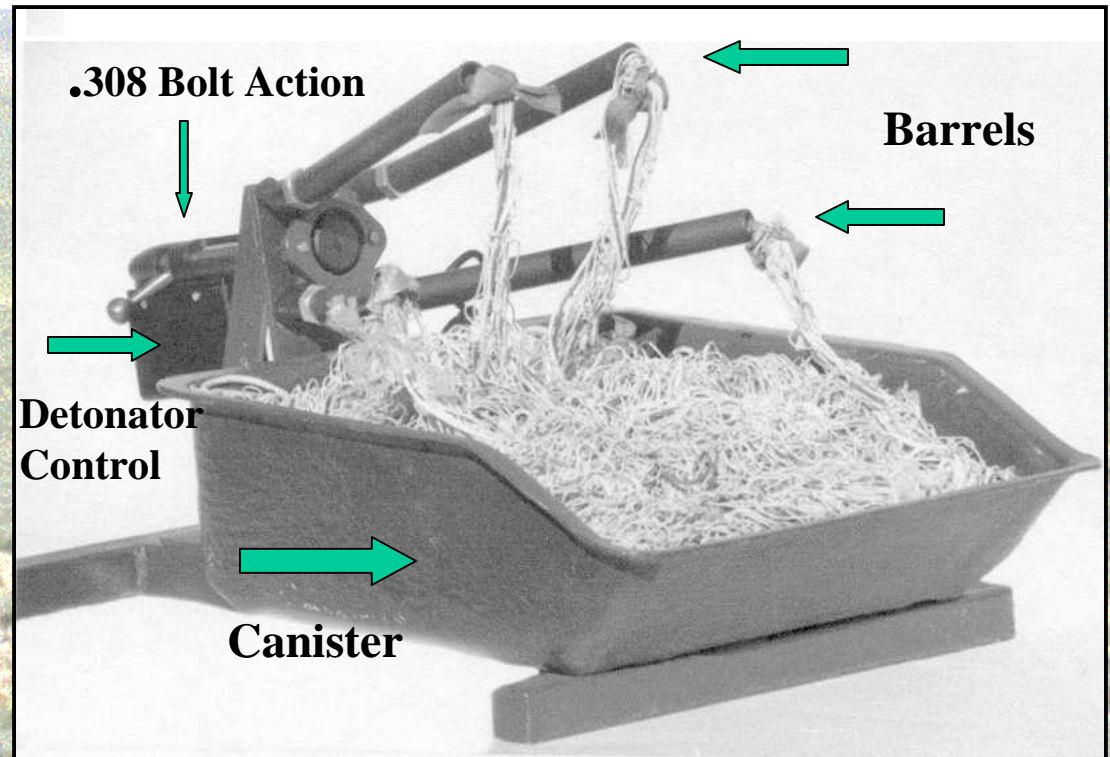
Sheridan, Wyoming

307-673-7571



CODA Enterprises Inc. ®, Mesa, Arizona

- Produced in 1984
- 4 Barrels
- .308 Bolt Action
- Fiberglass Canister
- Electronic Detonator Control
- Uses Expanding Gases



Coda Netlauncher

- **Commonly placed on the ground, or mounted on platforms**
- **Often used over bait, trails, near water holes or other areas that animals frequent (i.e. leks)**
- **Used on snowmobiles**



Bumper-Mounted Netlauncher



Modifications to the netlauncher

Vehicle Mounted Cannon Net

(Giesen et al. 1982)

- **8 x 20m nylon net, 3 cannons**
- **Average 5 and 3 birds/shot in 1978 & 1980**
- **5 fatalities due to broken wings**
- **95% juveniles**
- **Affected by wind**



The Net

- **30' X 30' net, 2 inch holes**
- **4 weighted projectiles attached to the net**
- **2 lead anchor weights are attached to the net**

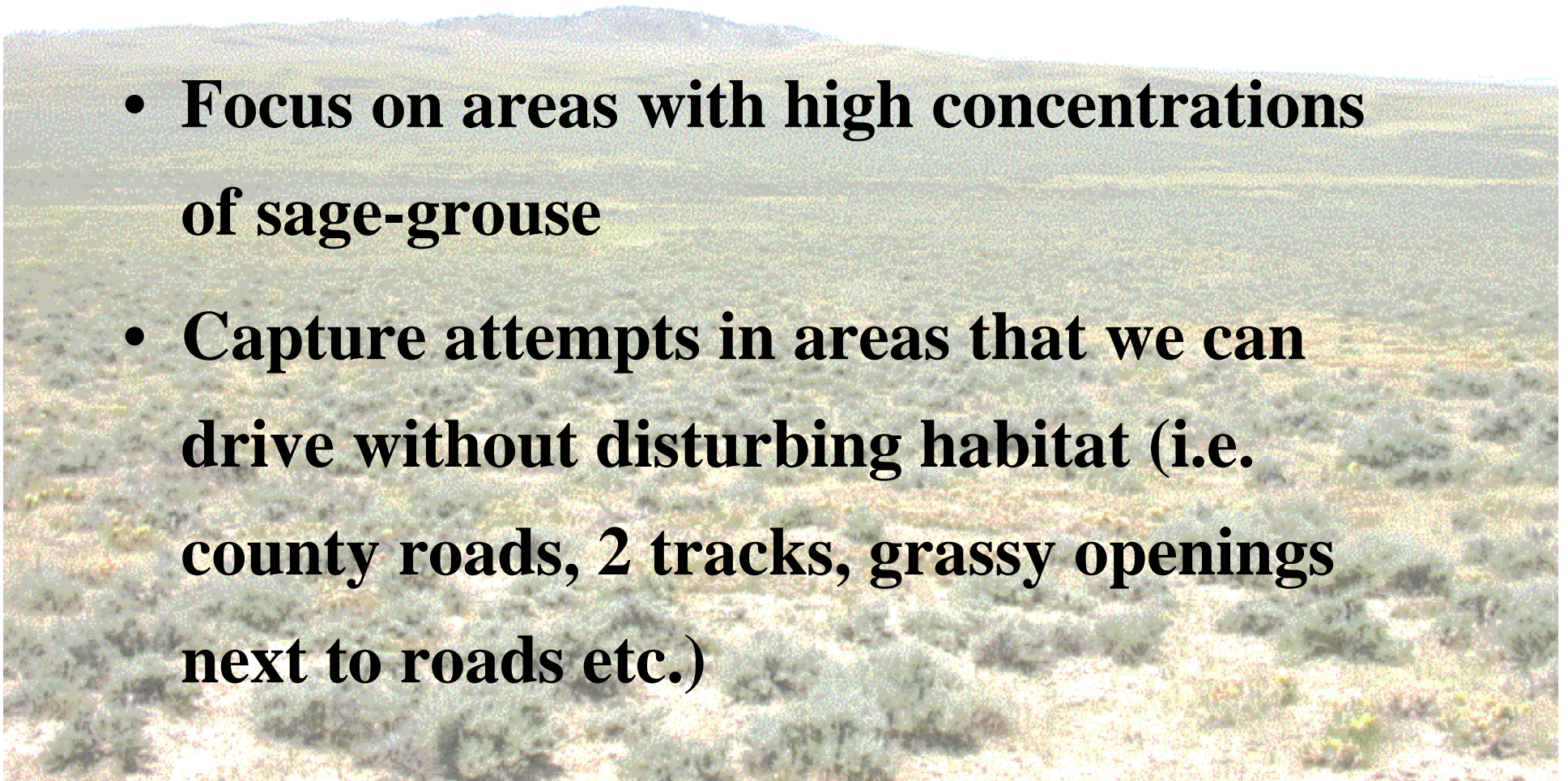


Set-Up

- **Initial adjustments to barrels**
- **Slide the Netlauncher into the receiver**
- **Connect the detonator chord to the detonator switch box, secure chord**
- **Secure anchor weights, and anchor rope**
- **Insert blank .308 cartridge**

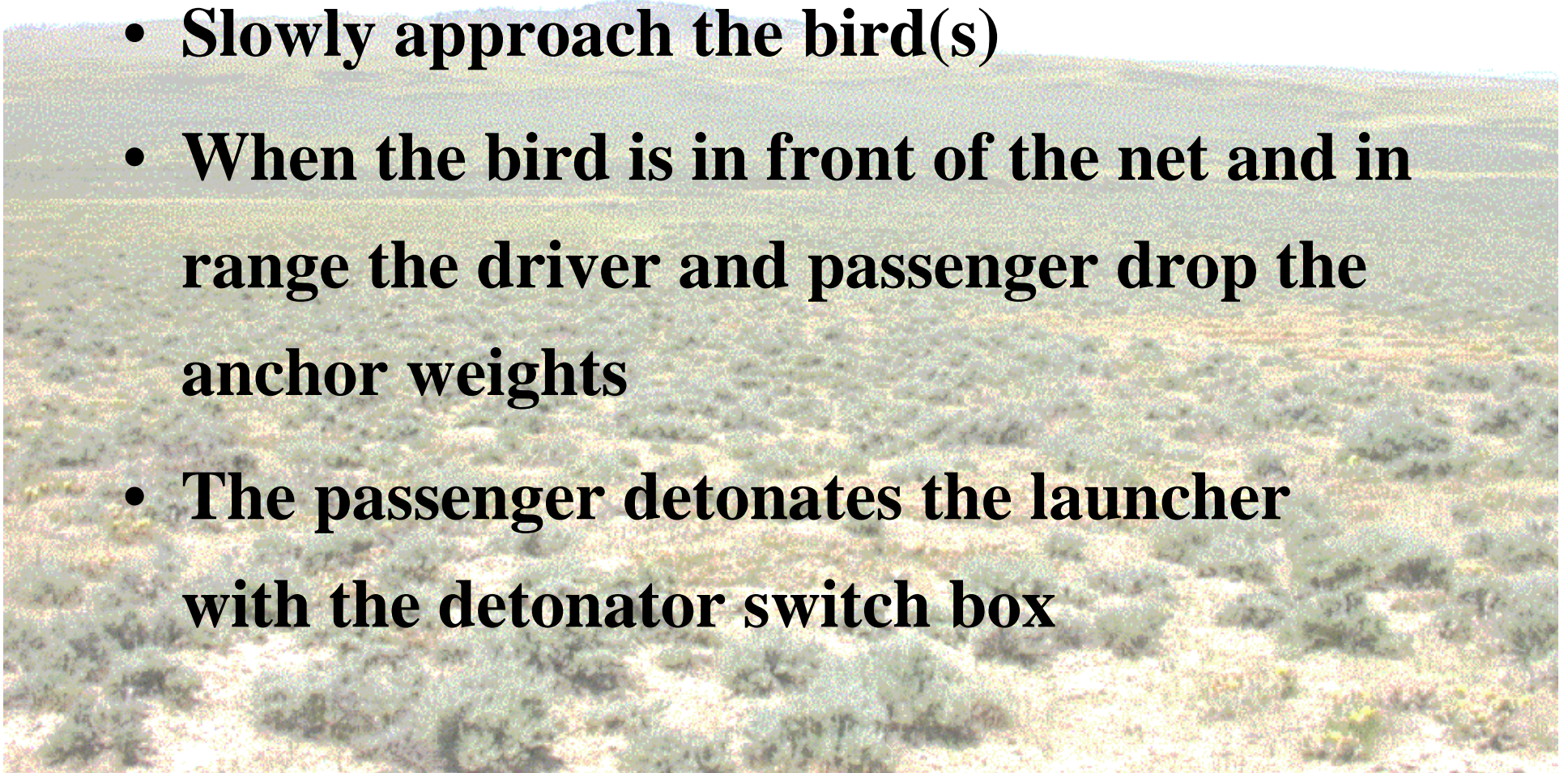
Capture Techniques

- **Focus on areas with high concentrations of sage-grouse**
- **Capture attempts in areas that we can drive without disturbing habitat (i.e. county roads, 2 tracks, grassy openings next to roads etc.)**



Capture Techniques

- **Slowly approach the bird(s)**
- **When the bird is in front of the net and in range the driver and passenger drop the anchor weights**
- **The passenger detonates the launcher with the detonator switch box**



Capture Video from Truck



Capture Success

- **Captured 40 sage-grouse in 2008 and 2009**
- **32/50 shots were successful**
- **64% Success Rate**
- **65% juveniles**
 - Several birds were captured in the fall
- **No injuries**



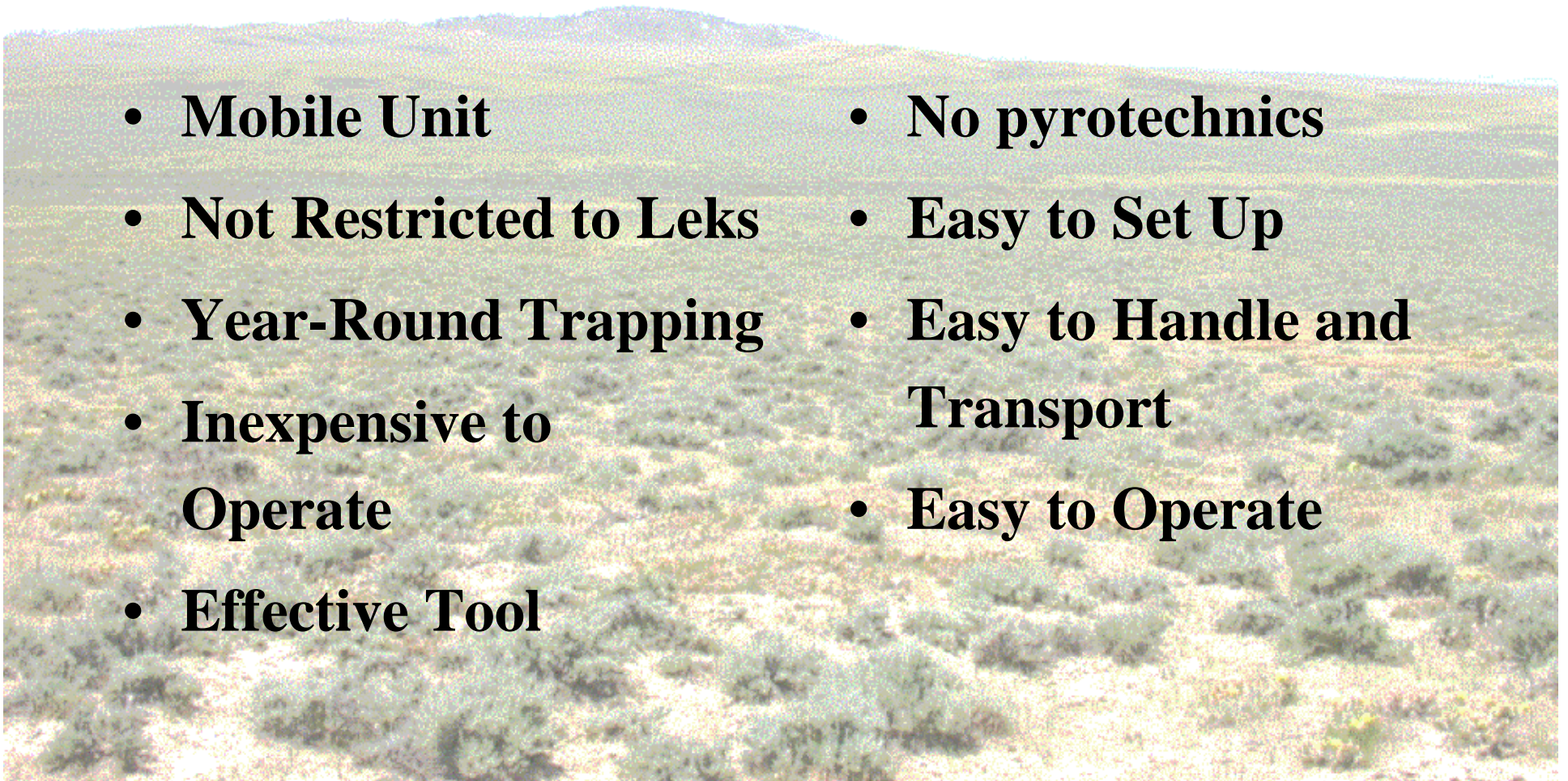
Field Observations that Influence Trapping Success

- **Wind**
- **Vegetation**
- **Flock Size**
- **Bird Behavior**
- **Attempted Captures on Flock**
- **Slope**
- **Trapper Experience**



Pros to Using the Netlauncher

- **Mobile Unit**
- **Not Restricted to Leks**
- **Year-Round Trapping**
- **Inexpensive to Operate**
- **Effective Tool**
- **No pyrotechnics**
- **Easy to Set Up**
- **Easy to Handle and Transport**
- **Easy to Operate**



Cons to Using the Netlauncher

- **Smaller samples of birds captured**
- **Birds must be in open areas**
- **Easily affected by wind**



Other Capture Techniques

- **Rocket-net**
- **Hoop net**
- **Walk-in traps**
- **Drop nets**



Contact Information:

Andy Sutphin Senior Project Manager

Tom Maechtle Principal Biologist/Owner

Big Horn Environmental Consultants

PO Box 207, Sheridan WY 82801

Phone: 307-673-7571

Email: asutphin@bighornec.com

Email: tom@bighornec.com

